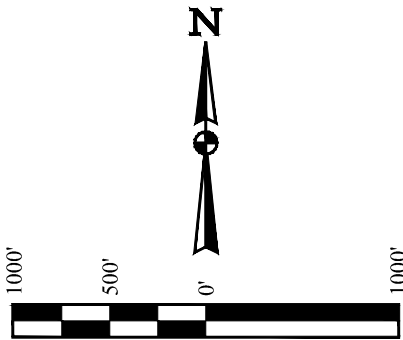
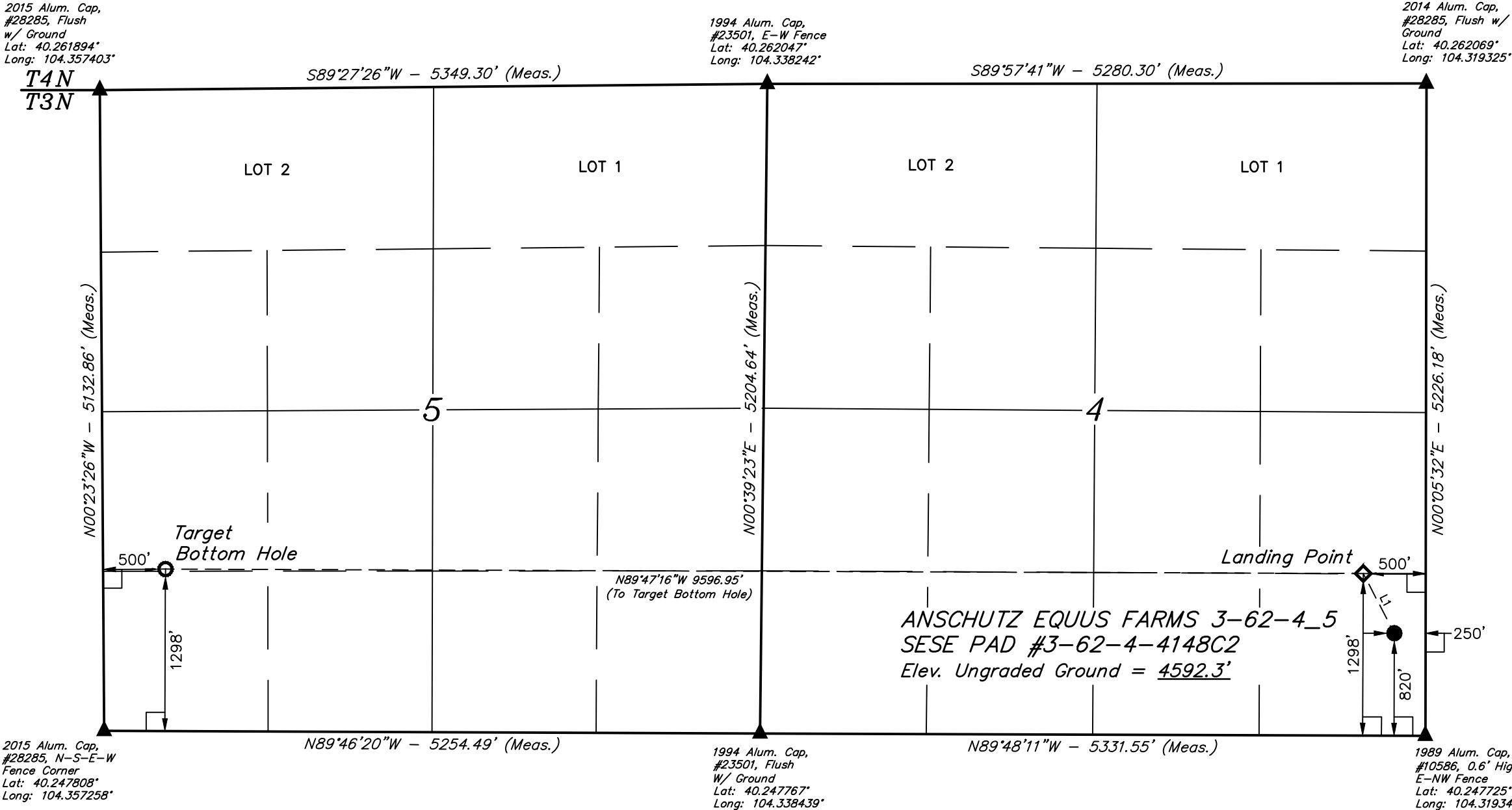


T3N, R62W, 6th P.M.

BILL BARRETT CORPORATION
ANSCHUTZ EQUUS FARMS 3-62-4_5 SESE PAD
#3-62-4-4148C2
SE 1/4 SE 1/4, SECTION 4, T3N, R62W, 6th P.M.
WELD COUNTY, COLORADO

BASIS OF BEARINGS
BASIS OF BEARINGS IS A G.P.S. OBSERVATION
BASIS OF ELEVATION

SPOT ELEVATION LOCATED AT THE NORTHEAST CORNER OF SECTION 24, T5N, R62W, 6th. P.M. TAKEN FROM THE POINT OF ROCKS, QUADRANGLE, COLORADO, WELD COUNTY, 7.5 MINUTE QUAD (TOPOGRAPHIC MAP) PUBLISHED BY THE UNITED STATES DEPARTMENT OF THE INTERIOR, GEOLOGICAL SURVEY. SAID ELEVATION IS MARKED AS BEING 4530 FEET.



LINE TABLE		
LINE	DIRECTION	LENGTH
L1	N27°29'48"W	539.83'

CERTIFICATE
THIS IS TO CERTIFY THAT THE ABOVE PLAT WAS PREPARED FROM FIELD NOTES OF ACTUAL SURVEYS MADE BY ME OR UNDER MY SUPERVISION, AND THAT THE SAME ARE TRUE AND CORRECT TO THE BEST OF MY KNOWLEDGE AND BELIEF.



PDOP = 1.3

- LEGEND:
- 90° SYMBOL
 - PROPOSED WELLHEAD.
 - LANDING POINT
 - TARGET BOTTOM HOLE.
 - SECTION CORNERS LOCATED. (NAD 83)

NAD 83 (TARGET BOTTOM HOLE)	NAD 83 (LANDING POINT)	NAD 83 (SURFACE LOCATION)
LATITUDE = 40°15'04.92" (40.251367)	LATITUDE = 40°15'04.65" (40.251292)	LATITUDE = 40°14'59.92" (40.249978)
LONGITUDE = 104°21'19.81" (104.355503)	LONGITUDE = 104°19'16.07" (104.321131)	LONGITUDE = 104°19'12.85" (104.320236)
NAD 27 (TARGET BOTTOM HOLE)	NAD 27 (LANDING POINT)	NAD 27 (SURFACE LOCATION)
LATITUDE = 40°15'04.99" (40.251386)	LATITUDE = 40°15'04.72" (40.251311)	LATITUDE = 40°14'59.99" (40.249997)
LONGITUDE = 104°21'17.98" (104.354994)	LONGITUDE = 104°19'14.24" (104.320622)	LONGITUDE = 104°19'11.02" (104.319728)
STATE PLANE NAD 83 (CO. NORTH)	STATE PLANE NAD 83 (CO. NORTH)	STATE PLANE NAD 83 (CO. NORTH)
N: 1336476.15 E: 3319444.24	N: 1336574.58 E: 3329038.16	N: 1336099.38 E: 3329293.99
STATE PLANE NAD 27 (CO. NORTH)	STATE PLANE NAD 27 (CO. NORTH)	STATE PLANE NAD 27 (CO. NORTH)
N: 336479.02 E: 2319594.67	N: 336577.54 E: 2329188.59	N: 336102.36 E: 2329444.43



UELS, LLC
Corporate Office * 85 South 200 East
Vernal, UT 84078 * (435) 789-1017

SURVEYED BY	DATE	REVISED BY	DATE
CHAD MEIERS, C.M.	11-12-15	C.C.	01-21-16
DRAWN BY	DATE		
C.C.	01-05-16		

WELL LOCATION PLAT