



# **Whiting Petroleum Corp.**

**Weld County, CO**

**Sec 8-T10N-R57W**

**Horsetail #08C-1708**

**Hz**

**Plan: APD**

## **Standard Planning Report**

**26 February, 2015**



Project: Weld County, CO  
Site: Sec 8-T10N-R57W  
Well: Horsetail #08C-1708  
Wellbore: Hz  
Design: APD

PROJECT DETAILS: Weld County, CO  
Geodetic System: US State Plane 1983  
Datum: North American Datum 1983  
Ellipsoid: GRS 1980  
Zone: Colorado Northern Zone  
System Datum: Mean Sea Level



Azimuths to True North  
Magnetic North: 7.86°  
Magnetic Field  
Strength: 53082.0nT  
Dip Angle: 67.44°  
Date: 2/10/2015  
Model: IGRF2010

WELL DETAILS: Horsetail #08C-1708

+N/-S	+E/-W	Northing	Ground Level:	4912.50	Longitude	Slot
0.00	0.00	1560699.44	Easting	3476580.88	40° 51' 35.230 N	103° 46' 37.300 W

#### SECTION DETAILS

Sec	MD	Inc	Azi	TVD	+N/-S	+E/-W	Dleg	TFace	Vsect	Target
1	0.00	0.00	0.00	0.00	0.00	0.00	0.00	0.00	0.00	
2	300.00	0.00	0.00	300.00	0.00	0.00	0.00	0.00	0.00	
3	575.00	5.50	47.00	574.58	8.99	9.65	2.00	47.00	-8.71	
4	4575.00	5.50	47.00	4556.16	270.46	290.03	0.00	0.00	-261.76	
5	4850.00	0.00	0.00	4830.74	279.46	299.68	2.00	180.00	-270.46	
6	5281.39	0.00	0.00	5262.13	279.46	299.68	0.00	0.00	-270.46	
7	6099.57	90.00	180.00	5783.00	-241.41	299.72	11.00	180.00	250.18	PBHL 1708
8	16007.13	90.00	180.00	5783.00	-10148.97	300.57	0.00	0.00	10153.42	PBHL 1708

#### FORMATION TOP DETAILS

TVDPath	MDPath	Formation
1525.00	1529.82	Upper Pierre
3565.00	3579.25	Hygiene
3665.00	3679.72	Lower Pierre
5604.00	5654.31	P200 Marker
5619.00	5674.54	P300 Marker
5639.00	5702.73	P350 Marker
5654.00	5724.96	Sharon Springs
5666.00	5743.56	Niobrara
5681.00	5768.03	Top A Chalk
5723.00	5847.10	Top A Marl
5742.00	5891.52	A Marl
5748.00	5907.54	Top Upper B
5779.00	6034.98	Base Upper B
5783.00	6099.13	Top Lower B

#### ANNOTATIONS

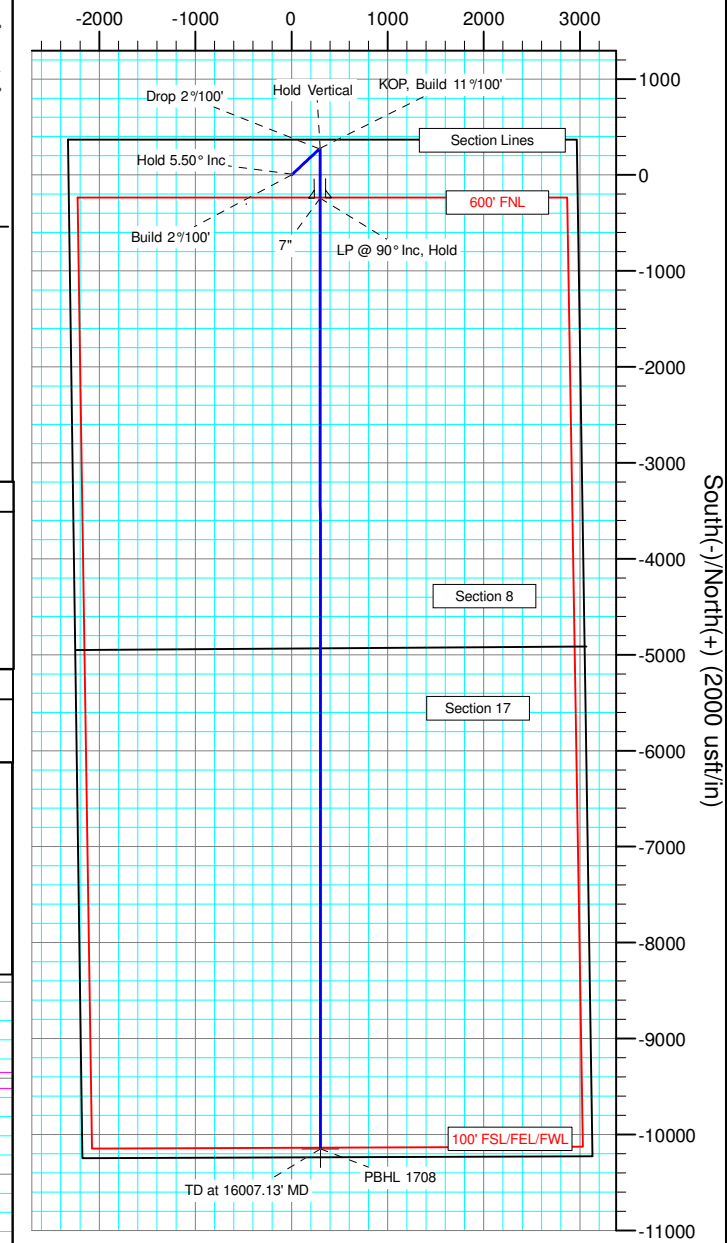
TVD	MD	Inc	Azi	+N/-S	+E/-W	Vsect	Departure	Annotation
300.00	300.00	0.00	0.00	0.00	0.00	0.00	0.00	Build 2°/100'
574.58	575.00	5.50	47.00	8.99	9.65	-8.71	13.19	Hold 5.50° Inc
4556.16	4575.00	5.50	47.00	270.46	290.03	-261.76	396.57	Drop 2°/100'
4830.74	4850.00	0.00	0.00	279.46	299.68	-270.46	409.76	Hold Vertical
5262.13	5281.39	0.00	0.00	279.46	299.68	-270.46	409.76	KOP, Build 11°/100'
5783.00	6099.57	90.00	180.00	-241.41	299.72	250.18	930.63	LP @ 90° Inc, Hold
5783.00	16007.13	90.00	180.00	-10148.97	300.57	10153.42	10838.19	TD at 16007.13' MD

#### DESIGN TARGET DETAILS

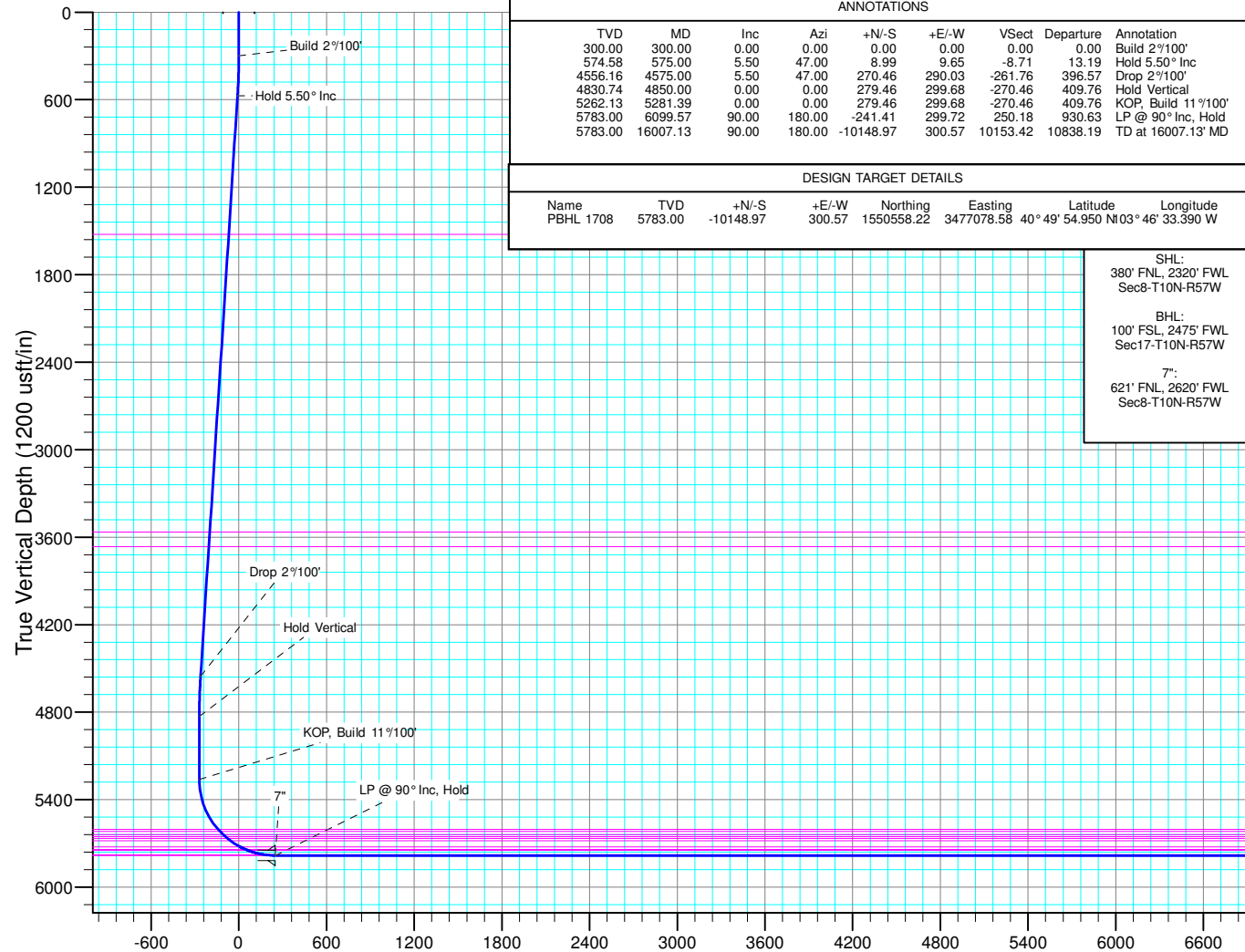
Name	TVD	+N/-S	+E/-W	Northing	Easting	Latitude	Longitude
PBHL 1708	5783.00	-10148.97	300.57	1550558.22	3477078.58	40° 49' 54.950 N	103° 46' 33.390 W

SHL:  
380' FNL, 2320' FWL  
Sec8-T10N-R57W  
BHL:  
100' FSL, 2475' FWL  
Sec17-T10N-R57W  
7":  
621' FNL, 2620' FWL  
Sec8-T10N-R57W

West(-)/East(+) (2000 usft/in)



South(-)/North(+) (2000 usft/in)



Vertical Section at 178.30° (1200 usft/in)



# WOG

## Planning Report

<b>Database:</b>	LandmarkEDM	<b>Local Co-ordinate Reference:</b>	Well Horsetail #08C-1708
<b>Company:</b>	Whiting Petroleum Corp.	<b>TVD Reference:</b>	KBE @ 4931.00usft (Original Well Elev)
<b>Project:</b>	Weld County, CO	<b>MD Reference:</b>	KBE @ 4931.00usft (Original Well Elev)
<b>Site:</b>	Sec 8-T10N-R57W	<b>North Reference:</b>	True
<b>Well:</b>	Horsetail #08C-1708	<b>Survey Calculation Method:</b>	Minimum Curvature
<b>Wellbore:</b>	Hz		
<b>Design:</b>	APD		

<b>Project</b>	Weld County, CO		
<b>Map System:</b>	US State Plane 1983	<b>System Datum:</b>	Mean Sea Level
<b>Geo Datum:</b>	North American Datum 1983		
<b>Map Zone:</b>	Colorado Northern Zone		

Site		Sec 8-T10N-R57W			
Site Position:		Northing:	1,561,022.64 usft	Latitude:	40° 51' 38.869 N
From:	Lat/Long	Easting:	3,474,249.13 usft	Longitude:	103° 47' 7.559 W
Position Uncertainty:	0.00 usft	Slot Radius:	13.200 in	Grid Convergence:	1.11 °

Well	Horsetail #08C-1708					
Well Position	+N/-S	-368.22 usft	Northing:	1,560,699.44 usft	Latitude:	40° 51' 35.230 N
	+E/-W	2,325.06 usft	Easting:	3,476,580.88 usft	Longitude:	103° 46' 37.300 W
Position Uncertainty		0.00 usft	Wellhead Elevation:		Ground Level:	4,912.50 usft

<b>Wellbore</b>	Hz				
<b>Magnetics</b>	<b>Model Name</b>	<b>Sample Date</b>	<b>Declination (°)</b>	<b>Dip Angle (°)</b>	<b>Field Strength (nT)</b>
	IGRF2010	2/10/2015	7.86	67.44	53,082

<b>Design</b>	APD			
<b>Audit Notes:</b>				
<b>Version:</b>	<b>Phase:</b>	PROTOTYPE	<b>Tie On Depth:</b>	0.00
<b>Vertical Section:</b>	<b>Depth From (TVD) (usft)</b>	<b>+N/-S (usft)</b>	<b>+E/-W (usft)</b>	<b>Direction (°)</b>
	0.00	0.00	0.00	178.30

<b>Plan Sections</b>										
<b>Measured Depth (usft)</b>	<b>Inclination (°)</b>	<b>Azimuth (°)</b>	<b>Vertical Depth (usft)</b>	<b>+N/-S (usft)</b>	<b>+E/-W (usft)</b>	<b>Dogleg Rate (°/100ft)</b>	<b>Build Rate (°/100ft)</b>	<b>Turn Rate (°/100ft)</b>	<b>TFO (°)</b>	<b>Target</b>
0.00	0.00	0.00	0.00	0.00	0.00	0.00	0.00	0.00	0.00	
300.00	0.00	0.00	300.00	0.00	0.00	0.00	0.00	0.00	0.00	
575.00	5.50	47.00	574.58	8.99	9.65	2.00	2.00	0.00	47.00	
4,575.00	5.50	47.00	4,556.16	270.46	290.03	0.00	0.00	0.00	0.00	
4,850.00	0.00	0.00	4,830.74	279.46	299.68	2.00	-2.00	0.00	180.00	
5,281.39	0.00	0.00	5,262.13	279.46	299.68	0.00	0.00	0.00	0.00	
6,099.57	90.00	180.00	5,783.00	-241.41	299.72	11.00	11.00	0.00	180.00	PBHL 1708
16,007.13	90.00	180.00	5,783.00	-10,148.97	300.57	0.00	0.00	0.00	0.00	PBHL 1708



# WOG

## Planning Report

<b>Database:</b>	LandmarkEDM	<b>Local Co-ordinate Reference:</b>	Well Horsetail #08C-1708
<b>Company:</b>	Whiting Petroleum Corp.	<b>TVD Reference:</b>	KBE @ 4931.00usft (Original Well Elev)
<b>Project:</b>	Weld County, CO	<b>MD Reference:</b>	KBE @ 4931.00usft (Original Well Elev)
<b>Site:</b>	Sec 8-T10N-R57W	<b>North Reference:</b>	True
<b>Well:</b>	Horsetail #08C-1708	<b>Survey Calculation Method:</b>	Minimum Curvature
<b>Wellbore:</b>	HZ		
<b>Design:</b>	APD		

Planned Survey									
Measured Depth (usft)	Inclination (°)	Azimuth (°)	Vertical Depth (usft)	+N/-S (usft)	+E/-W (usft)	Vertical Section (usft)	Dogleg Rate (°/100ft)	Build Rate (°/100ft)	Turn Rate (°/100ft)
0.00	0.00	0.00	0.00	0.00	0.00	0.00	0.00	0.00	0.00
100.00	0.00	0.00	100.00	0.00	0.00	0.00	0.00	0.00	0.00
200.00	0.00	0.00	200.00	0.00	0.00	0.00	0.00	0.00	0.00
300.00	0.00	0.00	300.00	0.00	0.00	0.00	0.00	0.00	0.00
<b>Build 2°/100'</b>									
400.00	2.00	47.00	399.98	1.19	1.28	-1.15	2.00	2.00	0.00
500.00	4.00	47.00	499.84	4.76	5.10	-4.61	2.00	2.00	0.00
575.00	5.50	47.00	574.58	8.99	9.65	-8.71	2.00	2.00	0.00
<b>Hold 5.50° Inc</b>									
600.00	5.50	47.00	599.46	10.63	11.40	-10.29	0.00	0.00	0.00
700.00	5.50	47.00	699.00	17.17	18.41	-16.61	0.00	0.00	0.00
800.00	5.50	47.00	798.54	23.70	25.42	-22.94	0.00	0.00	0.00
900.00	5.50	47.00	898.08	30.24	32.43	-29.27	0.00	0.00	0.00
1,000.00	5.50	47.00	997.62	36.78	39.44	-35.59	0.00	0.00	0.00
1,100.00	5.50	47.00	1,097.16	43.31	46.45	-41.92	0.00	0.00	0.00
1,200.00	5.50	47.00	1,196.70	49.85	53.46	-48.24	0.00	0.00	0.00
1,300.00	5.50	47.00	1,296.24	56.39	60.47	-54.57	0.00	0.00	0.00
1,400.00	5.50	47.00	1,395.78	62.92	67.48	-60.90	0.00	0.00	0.00
1,500.00	5.50	47.00	1,495.32	69.46	74.49	-67.22	0.00	0.00	0.00
1,529.82	5.50	47.00	1,525.00	71.41	76.58	-69.11	0.00	0.00	0.00
<b>Upper Pierre</b>									
1,600.00	5.50	47.00	1,594.86	76.00	81.50	-73.55	0.00	0.00	0.00
1,700.00	5.50	47.00	1,694.40	82.53	88.51	-79.88	0.00	0.00	0.00
1,800.00	5.50	47.00	1,793.94	89.07	95.51	-86.20	0.00	0.00	0.00
1,900.00	5.50	47.00	1,893.48	95.61	102.52	-92.53	0.00	0.00	0.00
2,000.00	5.50	47.00	1,993.02	102.14	109.53	-98.86	0.00	0.00	0.00
2,100.00	5.50	47.00	2,092.56	108.68	116.54	-105.18	0.00	0.00	0.00
2,200.00	5.50	47.00	2,192.10	115.22	123.55	-111.51	0.00	0.00	0.00
2,300.00	5.50	47.00	2,291.64	121.75	130.56	-117.83	0.00	0.00	0.00
2,400.00	5.50	47.00	2,391.18	128.29	137.57	-124.16	0.00	0.00	0.00
2,500.00	5.50	47.00	2,490.72	134.83	144.58	-130.49	0.00	0.00	0.00
2,600.00	5.50	47.00	2,590.26	141.36	151.59	-136.81	0.00	0.00	0.00
2,700.00	5.50	47.00	2,689.79	147.90	158.60	-143.14	0.00	0.00	0.00
2,800.00	5.50	47.00	2,789.33	154.44	165.61	-149.47	0.00	0.00	0.00
2,900.00	5.50	47.00	2,888.87	160.97	172.62	-155.79	0.00	0.00	0.00
3,000.00	5.50	47.00	2,988.41	167.51	179.63	-162.12	0.00	0.00	0.00
3,100.00	5.50	47.00	3,087.95	174.05	186.64	-168.44	0.00	0.00	0.00
3,200.00	5.50	47.00	3,187.49	180.58	193.65	-174.77	0.00	0.00	0.00
3,300.00	5.50	47.00	3,287.03	187.12	200.66	-181.10	0.00	0.00	0.00
3,400.00	5.50	47.00	3,386.57	193.66	207.67	-187.42	0.00	0.00	0.00
3,500.00	5.50	47.00	3,486.11	200.19	214.68	-193.75	0.00	0.00	0.00
3,579.25	5.50	47.00	3,565.00	205.37	220.24	-198.76	0.00	0.00	0.00
<b>Hygiene</b>									
3,600.00	5.50	47.00	3,585.65	206.73	221.69	-200.08	0.00	0.00	0.00
3,679.72	5.50	47.00	3,665.00	211.94	227.28	-205.12	0.00	0.00	0.00
<b>Lower Pierre</b>									
3,700.00	5.50	47.00	3,685.19	213.27	228.70	-206.40	0.00	0.00	0.00
3,800.00	5.50	47.00	3,784.73	219.80	235.71	-212.73	0.00	0.00	0.00
3,900.00	5.50	47.00	3,884.27	226.34	242.72	-219.05	0.00	0.00	0.00
4,000.00	5.50	47.00	3,983.81	232.88	249.73	-225.38	0.00	0.00	0.00
4,100.00	5.50	47.00	4,083.35	239.41	256.74	-231.71	0.00	0.00	0.00
4,200.00	5.50	47.00	4,182.89	245.95	263.75	-238.03	0.00	0.00	0.00
4,300.00	5.50	47.00	4,282.43	252.49	270.76	-244.36	0.00	0.00	0.00
4,400.00	5.50	47.00	4,381.97	259.02	277.77	-250.69	0.00	0.00	0.00



# WOG Planning Report

<b>Database:</b>	LandmarkEDM	<b>Local Co-ordinate Reference:</b>	Well Horsetail #08C-1708
<b>Company:</b>	Whiting Petroleum Corp.	<b>TVD Reference:</b>	KBE @ 4931.00usft (Original Well Elev)
<b>Project:</b>	Weld County, CO	<b>MD Reference:</b>	KBE @ 4931.00usft (Original Well Elev)
<b>Site:</b>	Sec 8-T10N-R57W	<b>North Reference:</b>	True
<b>Well:</b>	Horsetail #08C-1708	<b>Survey Calculation Method:</b>	Minimum Curvature
<b>Wellbore:</b>	HZ		
<b>Design:</b>	APD		

Planned Survey									
Measured Depth (usft)	Inclination (°)	Azimuth (°)	Vertical Depth (usft)	+N/-S (usft)	+E/-W (usft)	Vertical Section (usft)	Dogleg Rate (°/100ft)	Build Rate (°/100ft)	Turn Rate (°/100ft)
4,500.00	5.50	47.00	4,481.51	265.56	284.78	-257.01	0.00	0.00	0.00
4,575.00	5.50	47.00	4,556.16	270.46	290.03	-261.76	0.00	0.00	0.00
<b>Drop 2°/100'</b>									
4,600.00	5.00	47.00	4,581.06	272.02	291.71	-263.27	2.00	-2.00	0.00
4,700.00	3.00	47.00	4,680.81	276.78	296.81	-267.87	2.00	-2.00	0.00
4,800.00	1.00	47.00	4,780.74	279.16	299.36	-270.17	2.00	-2.00	0.00
4,850.00	0.00	0.00	4,830.74	279.46	299.68	-270.46	2.00	-2.00	0.00
<b>Hold Vertical</b>									
4,900.00	0.00	0.00	4,880.74	279.46	299.68	-270.46	0.00	0.00	0.00
5,000.00	0.00	0.00	4,980.74	279.46	299.68	-270.46	0.00	0.00	0.00
5,100.00	0.00	0.00	5,080.74	279.46	299.68	-270.46	0.00	0.00	0.00
5,200.00	0.00	0.00	5,180.74	279.46	299.68	-270.46	0.00	0.00	0.00
5,281.39	0.00	0.00	5,262.13	279.46	299.68	-270.46	0.00	0.00	0.00
<b>KOP, Build 11°/100'</b>									
5,300.00	2.05	180.00	5,280.74	279.12	299.68	-270.13	11.00	11.00	0.00
5,350.00	7.55	180.00	5,330.54	274.94	299.68	-265.95	11.00	11.00	0.00
5,400.00	13.05	180.00	5,379.72	266.01	299.68	-257.02	11.00	11.00	0.00
5,450.00	18.55	180.00	5,427.81	252.40	299.68	-243.42	11.00	11.00	0.00
5,500.00	24.05	180.00	5,474.38	234.25	299.68	-225.28	11.00	11.00	0.00
5,550.00	29.55	180.00	5,518.99	211.72	299.69	-202.75	11.00	11.00	0.00
5,600.00	35.05	180.00	5,561.24	185.01	299.69	-176.06	11.00	11.00	0.00
5,650.00	40.55	180.00	5,600.73	154.38	299.69	-145.44	11.00	11.00	0.00
5,654.31	41.02	180.00	5,604.00	151.56	299.69	-142.62	11.00	11.00	0.00
<b>P200 Marker</b>									
5,674.54	43.25	180.00	5,619.00	137.99	299.69	-129.06	11.00	11.00	0.00
<b>P300 Marker</b>									
5,700.00	46.05	180.00	5,637.11	120.10	299.69	-111.18	11.00	11.00	0.00
5,702.73	46.35	180.00	5,639.00	118.13	299.69	-109.21	11.00	11.00	0.00
<b>P350 Marker</b>									
5,724.96	48.79	180.00	5,654.00	101.72	299.70	-92.81	11.00	11.00	0.00
<b>Sharon Springs</b>									
5,743.56	50.84	180.00	5,666.00	87.52	299.70	-78.61	11.00	11.00	0.00
<b>Niobrara</b>									
5,750.00	51.55	180.00	5,670.03	82.50	299.70	-73.59	11.00	11.00	0.00
5,768.03	53.53	180.00	5,681.00	68.19	299.70	-59.29	11.00	11.00	0.00
<b>Top A Chalk</b>									
5,800.00	57.05	180.00	5,699.20	41.91	299.70	-33.02	11.00	11.00	0.00
5,847.10	62.23	180.00	5,723.00	1.29	299.70	7.58	11.00	11.00	0.00
<b>Top A Marl</b>									
5,850.00	62.55	180.00	5,724.35	-1.28	299.70	10.15	11.00	11.00	0.00
5,891.52	67.11	180.00	5,742.00	-38.85	299.71	47.71	11.00	11.00	0.00
<b>A Marl</b>									
5,900.00	68.05	180.00	5,745.23	-46.69	299.71	55.54	11.00	11.00	0.00
5,907.54	68.88	180.00	5,748.00	-53.70	299.71	62.55	11.00	11.00	0.00
<b>Top Upper B</b>									
5,950.00	73.55	180.00	5,761.67	-93.89	299.71	102.72	11.00	11.00	0.00
6,000.00	79.05	180.00	5,773.51	-142.45	299.72	151.26	11.00	11.00	0.00
6,034.98	82.89	180.00	5,779.00	-176.98	299.72	185.78	11.00	11.00	0.00
<b>Base Upper B</b>									
6,050.00	84.55	180.00	5,780.64	-191.92	299.72	200.71	11.00	11.00	0.00
6,099.13	89.95	180.00	5,783.00	-240.97	299.72	249.74	11.00	11.00	0.00
<b>Top Lower B</b>									



# WOG

## Planning Report

<b>Database:</b>	LandmarkEDM	<b>Local Co-ordinate Reference:</b>	Well Horsetail #08C-1708
<b>Company:</b>	Whiting Petroleum Corp.	<b>TVD Reference:</b>	KBE @ 4931.00usft (Original Well Elev)
<b>Project:</b>	Weld County, CO	<b>MD Reference:</b>	KBE @ 4931.00usft (Original Well Elev)
<b>Site:</b>	Sec 8-T10N-R57W	<b>North Reference:</b>	True
<b>Well:</b>	Horsetail #08C-1708	<b>Survey Calculation Method:</b>	Minimum Curvature
<b>Wellbore:</b>	HZ		
<b>Design:</b>	APD		

Planned Survey									
Measured Depth (usft)	Inclination (°)	Azimuth (°)	Vertical Depth (usft)	+N/-S (usft)	+E/-W (usft)	Vertical Section (usft)	Dogleg Rate (°/100ft)	Build Rate (°/100ft)	Turn Rate (°/100ft)
6,099.57	90.00	180.00	5,783.00	-241.41	299.72	250.18	11.00	11.00	0.00
LP @ 90° Inc, Hold - 7"									
6,200.00	90.00	180.00	5,783.00	-341.84	299.73	350.57	0.00	0.00	0.00
6,300.00	90.00	180.00	5,783.00	-441.84	299.74	450.52	0.00	0.00	0.00
6,400.00	90.00	180.00	5,783.00	-541.84	299.75	550.48	0.00	0.00	0.00
6,500.00	90.00	180.00	5,783.00	-641.84	299.76	650.44	0.00	0.00	0.00
6,600.00	90.00	180.00	5,783.00	-741.84	299.77	750.39	0.00	0.00	0.00
6,700.00	90.00	180.00	5,783.00	-841.84	299.78	850.35	0.00	0.00	0.00
6,800.00	90.00	180.00	5,783.00	-941.84	299.78	950.30	0.00	0.00	0.00
6,900.00	90.00	180.00	5,783.00	-1,041.84	299.79	1,050.26	0.00	0.00	0.00
7,000.00	90.00	180.00	5,783.00	-1,141.84	299.80	1,150.22	0.00	0.00	0.00
7,100.00	90.00	180.00	5,783.00	-1,241.84	299.81	1,250.17	0.00	0.00	0.00
7,200.00	90.00	180.00	5,783.00	-1,341.84	299.82	1,350.13	0.00	0.00	0.00
7,300.00	90.00	180.00	5,783.00	-1,441.84	299.83	1,450.09	0.00	0.00	0.00
7,400.00	90.00	180.00	5,783.00	-1,541.84	299.83	1,550.04	0.00	0.00	0.00
7,500.00	90.00	180.00	5,783.00	-1,641.84	299.84	1,650.00	0.00	0.00	0.00
7,600.00	90.00	180.00	5,783.00	-1,741.84	299.85	1,749.96	0.00	0.00	0.00
7,700.00	90.00	180.00	5,783.00	-1,841.84	299.86	1,849.91	0.00	0.00	0.00
7,800.00	90.00	180.00	5,783.00	-1,941.84	299.87	1,949.87	0.00	0.00	0.00
7,900.00	90.00	180.00	5,783.00	-2,041.84	299.88	2,049.83	0.00	0.00	0.00
8,000.00	90.00	180.00	5,783.00	-2,141.84	299.89	2,149.78	0.00	0.00	0.00
8,100.00	90.00	180.00	5,783.00	-2,241.84	299.89	2,249.74	0.00	0.00	0.00
8,200.00	90.00	180.00	5,783.00	-2,341.84	299.90	2,349.69	0.00	0.00	0.00
8,300.00	90.00	180.00	5,783.00	-2,441.84	299.91	2,449.65	0.00	0.00	0.00
8,400.00	90.00	180.00	5,783.00	-2,541.84	299.92	2,549.61	0.00	0.00	0.00
8,500.00	90.00	180.00	5,783.00	-2,641.84	299.93	2,649.56	0.00	0.00	0.00
8,600.00	90.00	180.00	5,783.00	-2,741.84	299.94	2,749.52	0.00	0.00	0.00
8,700.00	90.00	180.00	5,783.00	-2,841.84	299.95	2,849.48	0.00	0.00	0.00
8,800.00	90.00	180.00	5,783.00	-2,941.84	299.95	2,949.43	0.00	0.00	0.00
8,900.00	90.00	180.00	5,783.00	-3,041.84	299.96	3,049.39	0.00	0.00	0.00
9,000.00	90.00	180.00	5,783.00	-3,141.84	299.97	3,149.35	0.00	0.00	0.00
9,100.00	90.00	180.00	5,783.00	-3,241.84	299.98	3,249.30	0.00	0.00	0.00
9,200.00	90.00	180.00	5,783.00	-3,341.84	299.99	3,349.26	0.00	0.00	0.00
9,300.00	90.00	180.00	5,783.00	-3,441.84	300.00	3,449.22	0.00	0.00	0.00
9,400.00	90.00	180.00	5,783.00	-3,541.84	300.00	3,549.17	0.00	0.00	0.00
9,500.00	90.00	180.00	5,783.00	-3,641.84	300.01	3,649.13	0.00	0.00	0.00
9,600.00	90.00	180.00	5,783.00	-3,741.84	300.02	3,749.08	0.00	0.00	0.00
9,700.00	90.00	180.00	5,783.00	-3,841.84	300.03	3,849.04	0.00	0.00	0.00
9,800.00	90.00	180.00	5,783.00	-3,941.84	300.04	3,949.00	0.00	0.00	0.00
9,900.00	90.00	180.00	5,783.00	-4,041.84	300.05	4,048.95	0.00	0.00	0.00
10,000.00	90.00	180.00	5,783.00	-4,141.84	300.06	4,148.91	0.00	0.00	0.00
10,100.00	90.00	180.00	5,783.00	-4,241.84	300.06	4,248.87	0.00	0.00	0.00
10,200.00	90.00	180.00	5,783.00	-4,341.84	300.07	4,348.82	0.00	0.00	0.00
10,300.00	90.00	180.00	5,783.00	-4,441.84	300.08	4,448.78	0.00	0.00	0.00
10,400.00	90.00	180.00	5,783.00	-4,541.84	300.09	4,548.74	0.00	0.00	0.00
10,500.00	90.00	180.00	5,783.00	-4,641.84	300.10	4,648.69	0.00	0.00	0.00
10,600.00	90.00	180.00	5,783.00	-4,741.84	300.11	4,748.65	0.00	0.00	0.00
10,700.00	90.00	180.00	5,783.00	-4,841.84	300.12	4,848.61	0.00	0.00	0.00
10,800.00	90.00	180.00	5,783.00	-4,941.84	300.12	4,948.56	0.00	0.00	0.00
10,900.00	90.00	180.00	5,783.00	-5,041.84	300.13	5,048.52	0.00	0.00	0.00
11,000.00	90.00	180.00	5,783.00	-5,141.84	300.14	5,148.47	0.00	0.00	0.00
11,100.00	90.00	180.00	5,783.00	-5,241.84	300.15	5,248.43	0.00	0.00	0.00
11,200.00	90.00	180.00	5,783.00	-5,341.84	300.16	5,348.39	0.00	0.00	0.00
11,300.00	90.00	180.00	5,783.00	-5,441.84	300.17	5,448.34	0.00	0.00	0.00



# WOG

## Planning Report

<b>Database:</b>	LandmarkEDM	<b>Local Co-ordinate Reference:</b>	Well Horsetail #08C-1708
<b>Company:</b>	Whiting Petroleum Corp.	<b>TVD Reference:</b>	KBE @ 4931.00usft (Original Well Elev)
<b>Project:</b>	Weld County, CO	<b>MD Reference:</b>	KBE @ 4931.00usft (Original Well Elev)
<b>Site:</b>	Sec 8-T10N-R57W	<b>North Reference:</b>	True
<b>Well:</b>	Horsetail #08C-1708	<b>Survey Calculation Method:</b>	Minimum Curvature
<b>Wellbore:</b>	HZ		
<b>Design:</b>	APD		

Planned Survey									
Measured Depth (usft)	Inclination (°)	Azimuth (°)	Vertical Depth (usft)	+N/-S (usft)	+E/-W (usft)	Vertical Section (usft)	Dogleg Rate (°/100ft)	Build Rate (°/100ft)	Turn Rate (°/100ft)
11,400.00	90.00	180.00	5,783.00	-5,541.84	300.17	5,548.30	0.00	0.00	0.00
11,500.00	90.00	180.00	5,783.00	-5,641.84	300.18	5,648.26	0.00	0.00	0.00
11,600.00	90.00	180.00	5,783.00	-5,741.84	300.19	5,748.21	0.00	0.00	0.00
11,700.00	90.00	180.00	5,783.00	-5,841.84	300.20	5,848.17	0.00	0.00	0.00
11,800.00	90.00	180.00	5,783.00	-5,941.84	300.21	5,948.13	0.00	0.00	0.00
11,900.00	90.00	180.00	5,783.00	-6,041.84	300.22	6,048.08	0.00	0.00	0.00
12,000.00	90.00	180.00	5,783.00	-6,141.84	300.23	6,148.04	0.00	0.00	0.00
12,100.00	90.00	180.00	5,783.00	-6,241.84	300.23	6,248.00	0.00	0.00	0.00
12,200.00	90.00	180.00	5,783.00	-6,341.84	300.24	6,347.95	0.00	0.00	0.00
12,300.00	90.00	180.00	5,783.00	-6,441.84	300.25	6,447.91	0.00	0.00	0.00
12,400.00	90.00	180.00	5,783.00	-6,541.84	300.26	6,547.86	0.00	0.00	0.00
12,500.00	90.00	180.00	5,783.00	-6,641.84	300.27	6,647.82	0.00	0.00	0.00
12,600.00	90.00	180.00	5,783.00	-6,741.84	300.28	6,747.78	0.00	0.00	0.00
12,700.00	90.00	180.00	5,783.00	-6,841.84	300.28	6,847.73	0.00	0.00	0.00
12,800.00	90.00	180.00	5,783.00	-6,941.84	300.29	6,947.69	0.00	0.00	0.00
12,900.00	90.00	180.00	5,783.00	-7,041.84	300.30	7,047.65	0.00	0.00	0.00
13,000.00	90.00	180.00	5,783.00	-7,141.84	300.31	7,147.60	0.00	0.00	0.00
13,100.00	90.00	180.00	5,783.00	-7,241.84	300.32	7,247.56	0.00	0.00	0.00
13,200.00	90.00	180.00	5,783.00	-7,341.84	300.33	7,347.52	0.00	0.00	0.00
13,300.00	90.00	180.00	5,783.00	-7,441.84	300.34	7,447.47	0.00	0.00	0.00
13,400.00	90.00	180.00	5,783.00	-7,541.84	300.34	7,547.43	0.00	0.00	0.00
13,500.00	90.00	180.00	5,783.00	-7,641.84	300.35	7,647.39	0.00	0.00	0.00
13,600.00	90.00	180.00	5,783.00	-7,741.84	300.36	7,747.34	0.00	0.00	0.00
13,700.00	90.00	180.00	5,783.00	-7,841.84	300.37	7,847.30	0.00	0.00	0.00
13,800.00	90.00	180.00	5,783.00	-7,941.84	300.38	7,947.25	0.00	0.00	0.00
13,900.00	90.00	180.00	5,783.00	-8,041.84	300.39	8,047.21	0.00	0.00	0.00
14,000.00	90.00	180.00	5,783.00	-8,141.84	300.40	8,147.17	0.00	0.00	0.00
14,100.00	90.00	180.00	5,783.00	-8,241.84	300.40	8,247.12	0.00	0.00	0.00
14,200.00	90.00	180.00	5,783.00	-8,341.84	300.41	8,347.08	0.00	0.00	0.00
14,300.00	90.00	180.00	5,783.00	-8,441.84	300.42	8,447.04	0.00	0.00	0.00
14,400.00	90.00	180.00	5,783.00	-8,541.84	300.43	8,546.99	0.00	0.00	0.00
14,500.00	90.00	180.00	5,783.00	-8,641.84	300.44	8,646.95	0.00	0.00	0.00
14,600.00	90.00	180.00	5,783.00	-8,741.84	300.45	8,746.91	0.00	0.00	0.00
14,700.00	90.00	180.00	5,783.00	-8,841.84	300.45	8,846.86	0.00	0.00	0.00
14,800.00	90.00	180.00	5,783.00	-8,941.84	300.46	8,946.82	0.00	0.00	0.00
14,900.00	90.00	180.00	5,783.00	-9,041.84	300.47	9,046.78	0.00	0.00	0.00
15,000.00	90.00	180.00	5,783.00	-9,141.84	300.48	9,146.73	0.00	0.00	0.00
15,100.00	90.00	180.00	5,783.00	-9,241.84	300.49	9,246.69	0.00	0.00	0.00
15,200.00	90.00	180.00	5,783.00	-9,341.84	300.50	9,346.64	0.00	0.00	0.00
15,300.00	90.00	180.00	5,783.00	-9,441.84	300.51	9,446.60	0.00	0.00	0.00
15,400.00	90.00	180.00	5,783.00	-9,541.84	300.51	9,546.56	0.00	0.00	0.00
15,500.00	90.00	180.00	5,783.00	-9,641.84	300.52	9,646.51	0.00	0.00	0.00
15,600.00	90.00	180.00	5,783.00	-9,741.84	300.53	9,746.47	0.00	0.00	0.00
15,700.00	90.00	180.00	5,783.00	-9,841.84	300.54	9,846.43	0.00	0.00	0.00
15,800.00	90.00	180.00	5,783.00	-9,941.84	300.55	9,946.38	0.00	0.00	0.00
15,900.00	90.00	180.00	5,783.00	-10,041.84	300.56	10,046.34	0.00	0.00	0.00
16,007.13	90.00	180.00	5,783.00	-10,148.97	300.57	10,153.42	0.00	0.00	0.00
TD at 16007.13' MD									



# WOG

## Planning Report

<b>Database:</b>	LandmarkEDM	<b>Local Co-ordinate Reference:</b>	Well Horsetail #08C-1708
<b>Company:</b>	Whiting Petroleum Corp.	<b>TVD Reference:</b>	KBE @ 4931.00usft (Original Well Elev)
<b>Project:</b>	Weld County, CO	<b>MD Reference:</b>	KBE @ 4931.00usft (Original Well Elev)
<b>Site:</b>	Sec 8-T10N-R57W	<b>North Reference:</b>	True
<b>Well:</b>	Horsetail #08C-1708	<b>Survey Calculation Method:</b>	Minimum Curvature
<b>Wellbore:</b>	Hz		
<b>Design:</b>	APD		

Design Targets									
Target Name	Dip Angle (°)	Dip Dir. (°)	TVD (usft)	+N/-S (usft)	+E/-W (usft)	Northing (usft)	Easting (usft)	Latitude	Longitude
- hit/miss target									
- Shape									
PBHL 1708	0.00	0.00	5,783.00	-10,148.97	300.57	1,550,558.23	3,477,078.57	40° 49' 54.950 N	103° 46' 33.390 W
- plan hits target center									
- Point									

Casing Points					
Measured Depth (usft)	Vertical Depth (usft)	Name	Casing Diameter (in)	Hole Diameter (in)	
6,099.57	5,783.00	7"	7.000	8.750	

Formations						
Measured Depth (usft)	Vertical Depth (usft)	Name	Lithology	Dip (°)	Dip Direction (°)	
1,529.82	1,525.50	Upper Pierre				
3,579.25	3,565.50	Hygiene				
3,679.72	3,665.50	Lower Pierre				
5,654.31	5,604.50	P200 Marker				
5,674.54	5,619.50	P300 Marker				
5,702.73	5,639.50	P350 Marker				
5,724.96	5,654.50	Sharon Springs				
5,743.56	5,666.50	Niobrara				
5,768.03	5,681.50	Top A Chalk				
5,847.10	5,723.50	Top A Marl				
5,891.52	5,742.50	A Marl				
5,907.54	5,748.50	Top Upper B				
6,034.98	5,779.50	Base Upper B				
6,099.13	5,783.50	Top Lower B				

Plan Annotations					
Measured Depth (usft)	Vertical Depth (usft)	Local Coordinates			
		+N/-S (usft)	+E/-W (usft)	Comment	
300.00	300.00	0.00	0.00	Build 2°/100'	
575.00	574.58	8.99	9.65	Hold 5.50° Inc	
4,575.00	4,556.16	270.46	290.03	Drop 2°/100'	
4,850.00	4,830.74	279.46	299.68	Hold Vertical	
5,281.39	5,262.13	279.46	299.68	KOP, Build 11°/100'	
6,099.57	5,783.00	-241.41	299.72	LP @ 90° Inc, Hold	
16,007.13	5,783.00	-10,148.97	300.57	TD at 16007.13' MD	