

PROJECT DETAILS: Weld County, CO NAD 83

Geodetic System: US State Plane 1983
Datum: North American Datum 1983
Ellipsoid: GRS 1980
Zone: Colorado Northern Zone
System Datum: Mean Sea Level
Local North: True

Project: Weld County, CO NAD 83
Site: Anschutz Equus Farms 3-62-4 5 SESE Pad
Well: Anschutz Equus Farms 03-62-04-5649B2
Wellbore: OH
Design: Plan #1



Azimuths to True North
Magnetic North: 8.22°

Magnetic Field
Strength: 52542.6snT
Dip Angle: 66.91°
Date: 2/12/2016
Model: BGGM2015

SECTION DETAILS

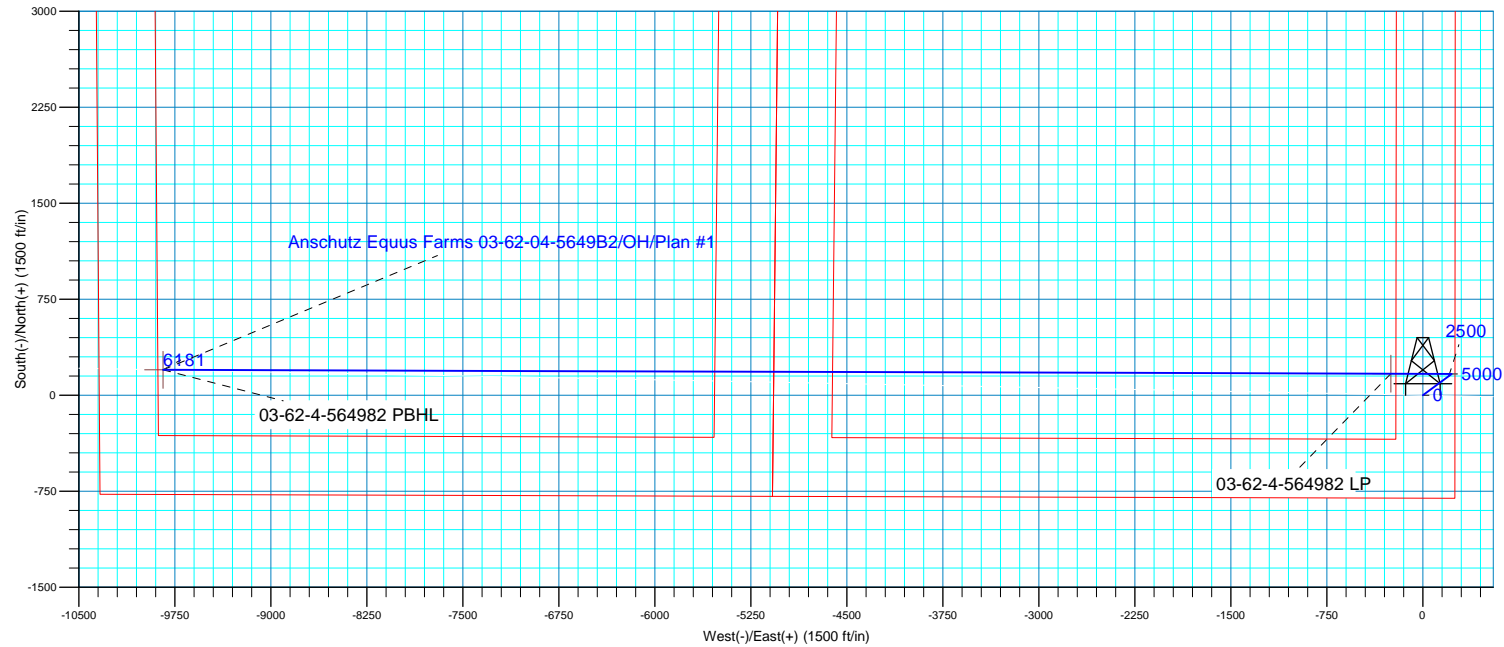
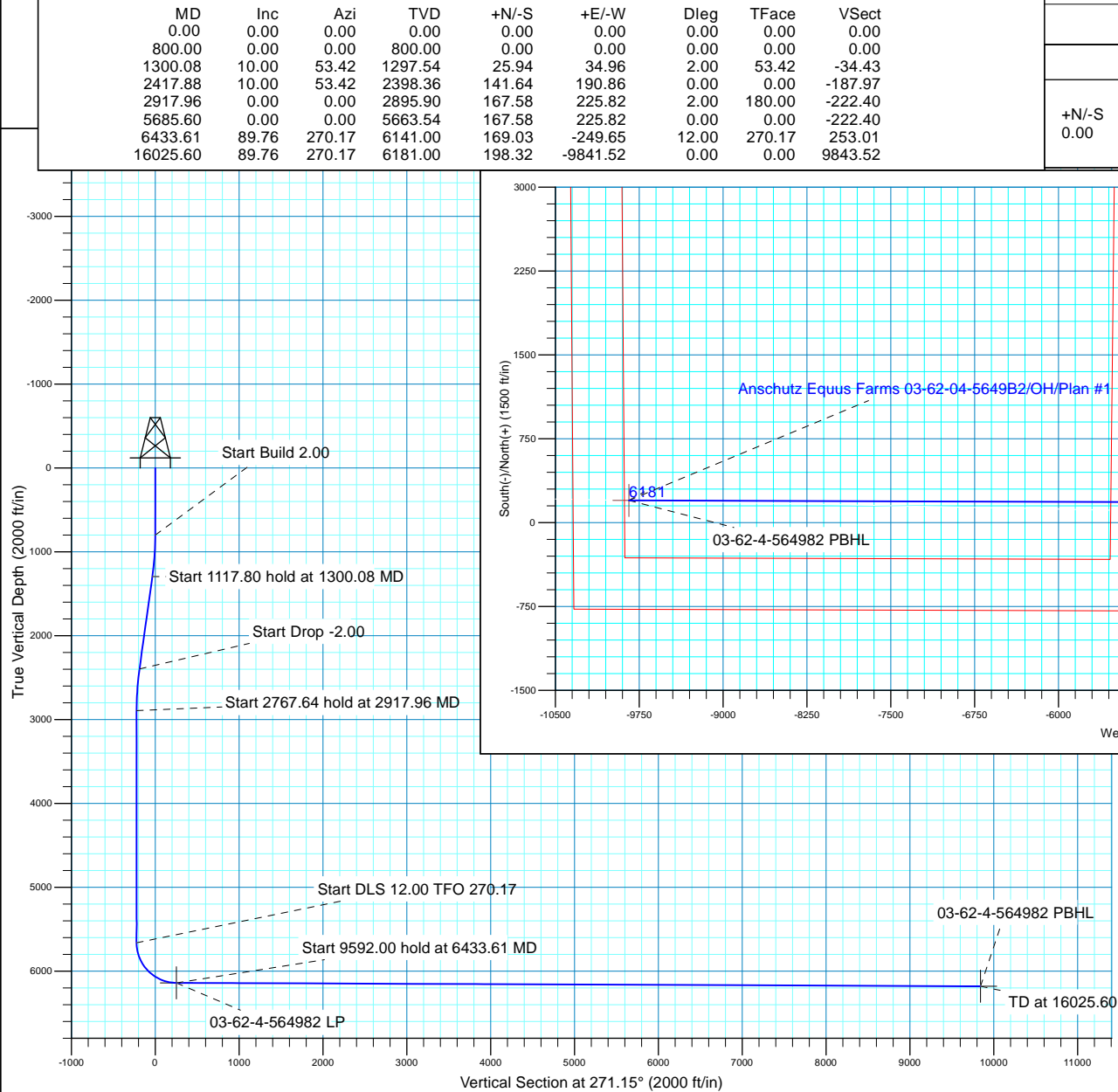
Plan: Plan #1 (Anschutz Equus Farms 03-62-04-5649B2/OH)

Created By: rscott Date: 17:45, February 15 2016

WELL DETAILS: Anschutz Equus Farms 03-62-04-5649B2

WELL @ 4591.00ft (Original Well Elev) 4591.00

+N/-S	+E/-W	Northing	Easting	Latitude	Longitude
0.00	0.00	1336083.93	3329294.0940° 14'	59.769 N	104° 19' 12.850 W





Bill Barrett Corp.

Weld County, CO NAD 83

Anschutz Equus Farms 3-62-4 5 SESE Pad

Anschutz Equus Farms 03-62-04-5649B2

OH

Plan: Plan #1

Standard Planning Report

15 February, 2016



Database:	Casper District	Local Co-ordinate Reference:	Well Anschutz Equus Farms 03-62-04-5649B2
Company:	Bill Barrett Corp.	TVD Reference:	WELL @ 4591.00ft (Original Well Elev)
Project:	Weld County, CO NAD 83	MD Reference:	WELL @ 4591.00ft (Original Well Elev)
Site:	Anschutz Equus Farms 3-62-4 5 SESE Pad	North Reference:	True
Well:	Anschutz Equus Farms 03-62-04-5649B2	Survey Calculation Method:	Minimum Curvature
Wellbore:	OH		
Design:	Plan #1		

Project	Weld County, CO NAD 83		
Map System:	US State Plane 1983	System Datum:	Mean Sea Level
Geo Datum:	North American Datum 1983		
Map Zone:	Colorado Northern Zone		

Site	Anschutz Equus Farms 3-62-4 5 SESE Pad, SE 1/4 SE 1/4, SECTION 4, T3N, R62WJ.. 6th P.M.			
Site Position:		Northing:	1,336,024.28 usft	Latitude: 40° 14' 59.180 N
From:	Lat/Long	Easting:	3,329,294.89 usft	Longitude: 104° 19' 12.850 W
Position Uncertainty:	0.00 ft	Slot Radius:	13.200 in	Grid Convergence: 0.76 °

Well	Anschutz Equus Farms 03-62-04-5649B2, 805 FSL 250 FEL			
Well Position	+N/-S	59.65 ft	Northing:	1,336,083.93 usft
	+E/-W	0.00 ft	Easting:	3,329,294.09 usft
Position Uncertainty		0.00 ft	Wellhead Elevation:	0.00 ft
			Ground Level:	4,591.00 ft

Wellbore	OH				
Magnetics	Model Name	Sample Date	Declination (°)	Dip Angle (°)	Field Strength (nT)
	BGGM2015	2/12/2016	8.22	66.91	52,543

Design	Plan #1			
Audit Notes:				
Version:	Phase:	PLAN	Tie On Depth:	0.00
Vertical Section:	Depth From (TVD) (ft)	+N/-S (ft)	+E/-W (ft)	Direction (°)
	0.00	0.00	0.00	271.15

Plan Sections										
Measured Depth (ft)	Inclination (°)	Azimuth (°)	Vertical Depth (ft)	+N/-S (ft)	+E/-W (ft)	Dogleg Rate (°/100ft)	Build Rate (°/100ft)	Turn Rate (°/100ft)	TFO (°)	Target
0.00	0.00	0.00	0.00	0.00	0.00	0.00	0.00	0.00	0.00	
800.00	0.00	0.00	800.00	0.00	0.00	0.00	0.00	0.00	0.00	
1,300.08	10.00	53.42	1,297.54	25.94	34.96	2.00	2.00	0.00	53.42	
2,417.88	10.00	53.42	2,398.36	141.64	190.86	0.00	0.00	0.00	0.00	
2,917.96	0.00	0.00	2,895.90	167.58	225.82	2.00	-2.00	0.00	180.00	
5,685.60	0.00	0.00	5,663.54	167.58	225.82	0.00	0.00	0.00	0.00	
6,433.61	89.76	270.17	6,141.00	169.03	-249.65	12.00	12.00	-12.01	270.17	
16,025.60	89.76	270.17	6,181.00	198.32	-9,841.52	0.00	0.00	0.00	0.00	03-62-4-564982 PBHI

Database:	Casper District	Local Co-ordinate Reference:	Well Anschutz Equus Farms 03-62-04-5649B2
Company:	Bill Barrett Corp.	TVD Reference:	WELL @ 4591.00ft (Original Well Elev)
Project:	Weld County, CO NAD 83	MD Reference:	WELL @ 4591.00ft (Original Well Elev)
Site:	Anschutz Equus Farms 3-62-4 5 SESE Pad	North Reference:	True
Well:	Anschutz Equus Farms 03-62-04-5649B2	Survey Calculation Method:	Minimum Curvature
Wellbore:	OH		
Design:	Plan #1		

Planned Survey										
Measured Depth (ft)	Inclination (°)	Azimuth (°)	Vertical Depth (ft)	+N/-S (ft)	+E/-W (ft)	Vertical Section (ft)	Dogleg Rate (°/100ft)	Build Rate (°/100ft)	Turn Rate (°/100ft)	
0.00	0.00	0.00	0.00	0.00	0.00	0.00	0.00	0.00	0.00	
100.00	0.00	0.00	100.00	0.00	0.00	0.00	0.00	0.00	0.00	
200.00	0.00	0.00	200.00	0.00	0.00	0.00	0.00	0.00	0.00	
300.00	0.00	0.00	300.00	0.00	0.00	0.00	0.00	0.00	0.00	
400.00	0.00	0.00	400.00	0.00	0.00	0.00	0.00	0.00	0.00	
500.00	0.00	0.00	500.00	0.00	0.00	0.00	0.00	0.00	0.00	
600.00	0.00	0.00	600.00	0.00	0.00	0.00	0.00	0.00	0.00	
700.00	0.00	0.00	700.00	0.00	0.00	0.00	0.00	0.00	0.00	
800.00	0.00	0.00	800.00	0.00	0.00	0.00	0.00	0.00	0.00	
Start Build 2.00										
900.00	2.00	53.42	899.98	1.04	1.40	-1.38	2.00	2.00	0.00	
1,000.00	4.00	53.42	999.84	4.16	5.60	-5.52	2.00	2.00	0.00	
1,100.00	6.00	53.42	1,099.45	9.35	12.60	-12.41	2.00	2.00	0.00	
1,200.00	8.00	53.42	1,198.70	16.61	22.39	-22.05	2.00	2.00	0.00	
1,300.00	10.00	53.42	1,297.47	25.94	34.95	-34.42	2.00	2.00	0.00	
1,300.08	10.00	53.42	1,297.54	25.94	34.96	-34.43	2.00	2.00	0.00	
Start 1117.80 hold at 1300.08 MD										
1,400.00	10.00	53.42	1,395.95	36.29	48.90	-48.16	0.00	0.00	0.00	
1,500.00	10.00	53.42	1,494.43	46.64	62.84	-61.89	0.00	0.00	0.00	
1,600.00	10.00	53.42	1,592.91	56.99	76.79	-75.63	0.00	0.00	0.00	
1,700.00	10.00	53.42	1,691.39	67.34	90.74	-89.36	0.00	0.00	0.00	
1,800.00	10.00	53.42	1,789.87	77.69	104.68	-103.10	0.00	0.00	0.00	
1,900.00	10.00	53.42	1,888.35	88.04	118.63	-116.83	0.00	0.00	0.00	
2,000.00	10.00	53.42	1,986.83	98.39	132.58	-130.57	0.00	0.00	0.00	
2,100.00	10.00	53.42	2,085.31	108.74	146.52	-144.30	0.00	0.00	0.00	
2,200.00	10.00	53.42	2,183.79	119.09	160.47	-158.04	0.00	0.00	0.00	
2,300.00	10.00	53.42	2,282.27	129.44	174.42	-171.78	0.00	0.00	0.00	
2,400.00	10.00	53.42	2,380.75	139.78	188.37	-185.51	0.00	0.00	0.00	
2,417.88	10.00	53.42	2,398.36	141.64	190.86	-187.97	0.00	0.00	0.00	
Start Drop -2.00										
2,500.00	8.36	53.42	2,479.42	149.44	201.38	-198.33	2.00	-2.00	0.00	
2,600.00	6.36	53.42	2,578.59	157.08	211.67	-208.46	2.00	-2.00	0.00	
2,700.00	4.36	53.42	2,678.15	162.64	219.16	-215.84	2.00	-2.00	0.00	
2,800.00	2.36	53.42	2,777.97	166.13	223.87	-220.48	2.00	-2.00	0.00	
2,900.00	0.36	53.42	2,877.94	167.55	225.77	-222.35	2.00	-2.00	0.00	
2,917.96	0.00	0.00	2,895.90	167.58	225.82	-222.40	2.00	-2.00	0.00	
Start 2767.64 hold at 2917.96 MD										
3,000.00	0.00	0.00	2,977.94	167.58	225.82	-222.40	0.00	0.00	0.00	
3,100.00	0.00	0.00	3,077.94	167.58	225.82	-222.40	0.00	0.00	0.00	
3,200.00	0.00	0.00	3,177.94	167.58	225.82	-222.40	0.00	0.00	0.00	
3,300.00	0.00	0.00	3,277.94	167.58	225.82	-222.40	0.00	0.00	0.00	
3,400.00	0.00	0.00	3,377.94	167.58	225.82	-222.40	0.00	0.00	0.00	
3,500.00	0.00	0.00	3,477.94	167.58	225.82	-222.40	0.00	0.00	0.00	
3,600.00	0.00	0.00	3,577.94	167.58	225.82	-222.40	0.00	0.00	0.00	
3,700.00	0.00	0.00	3,677.94	167.58	225.82	-222.40	0.00	0.00	0.00	
3,800.00	0.00	0.00	3,777.94	167.58	225.82	-222.40	0.00	0.00	0.00	
3,900.00	0.00	0.00	3,877.94	167.58	225.82	-222.40	0.00	0.00	0.00	
4,000.00	0.00	0.00	3,977.94	167.58	225.82	-222.40	0.00	0.00	0.00	
4,100.00	0.00	0.00	4,077.94	167.58	225.82	-222.40	0.00	0.00	0.00	
4,200.00	0.00	0.00	4,177.94	167.58	225.82	-222.40	0.00	0.00	0.00	
4,300.00	0.00	0.00	4,277.94	167.58	225.82	-222.40	0.00	0.00	0.00	
4,400.00	0.00	0.00	4,377.94	167.58	225.82	-222.40	0.00	0.00	0.00	
4,500.00	0.00	0.00	4,477.94	167.58	225.82	-222.40	0.00	0.00	0.00	

Database:	Casper District	Local Co-ordinate Reference:	Well Anschutz Equus Farms 03-62-04-5649B2
Company:	Bill Barrett Corp.	TVD Reference:	WELL @ 4591.00ft (Original Well Elev)
Project:	Weld County, CO NAD 83	MD Reference:	WELL @ 4591.00ft (Original Well Elev)
Site:	Anschutz Equus Farms 3-62-4 5 SESE Pad	North Reference:	True
Well:	Anschutz Equus Farms 03-62-04-5649B2	Survey Calculation Method:	Minimum Curvature
Wellbore:	OH		
Design:	Plan #1		

Planned Survey									
Measured Depth (ft)	Inclination (°)	Azimuth (°)	Vertical Depth (ft)	+N/-S (ft)	+E/-W (ft)	Vertical Section (ft)	Dogleg Rate (°/100ft)	Build Rate (°/100ft)	Turn Rate (°/100ft)
4,600.00	0.00	0.00	4,577.94	167.58	225.82	-222.40	0.00	0.00	0.00
4,700.00	0.00	0.00	4,677.94	167.58	225.82	-222.40	0.00	0.00	0.00
4,800.00	0.00	0.00	4,777.94	167.58	225.82	-222.40	0.00	0.00	0.00
4,900.00	0.00	0.00	4,877.94	167.58	225.82	-222.40	0.00	0.00	0.00
5,000.00	0.00	0.00	4,977.94	167.58	225.82	-222.40	0.00	0.00	0.00
5,100.00	0.00	0.00	5,077.94	167.58	225.82	-222.40	0.00	0.00	0.00
5,200.00	0.00	0.00	5,177.94	167.58	225.82	-222.40	0.00	0.00	0.00
5,300.00	0.00	0.00	5,277.94	167.58	225.82	-222.40	0.00	0.00	0.00
5,400.00	0.00	0.00	5,377.94	167.58	225.82	-222.40	0.00	0.00	0.00
5,500.00	0.00	0.00	5,477.94	167.58	225.82	-222.40	0.00	0.00	0.00
5,600.00	0.00	0.00	5,577.94	167.58	225.82	-222.40	0.00	0.00	0.00
5,685.60	0.00	0.00	5,663.54	167.58	225.82	-222.40	0.00	0.00	0.00
Start DLS 12.00 TFO 270.17									
5,700.00	1.73	270.17	5,677.94	167.58	225.60	-222.18	12.00	12.00	0.00
5,800.00	13.73	270.17	5,776.85	167.62	212.18	-208.76	12.00	12.00	0.00
5,900.00	25.73	270.17	5,870.81	167.72	178.49	-175.07	12.00	12.00	0.00
6,000.00	37.73	270.17	5,955.71	167.88	125.99	-122.59	12.00	12.00	0.00
6,100.00	49.73	270.17	6,027.84	168.10	57.00	-53.60	12.00	12.00	0.00
6,200.00	61.73	270.17	6,084.05	168.35	-25.49	28.88	12.00	12.00	0.00
6,300.00	73.73	270.17	6,121.88	168.63	-117.86	121.23	12.00	12.00	0.00
6,400.00	85.73	270.17	6,139.68	168.93	-216.08	219.44	12.00	12.00	0.00
6,433.61	89.76	270.17	6,141.00	169.03	-249.65	253.01	12.00	12.00	0.00
Start 9592.00 hold at 6433.61 MD									
6,433.65	89.76	270.17	6,141.00	169.03	-249.69	253.05	0.00	0.00	0.00
03-62-4-564982 LP									
6,500.00	89.76	270.17	6,141.28	169.23	-316.04	319.39	0.00	0.00	0.00
6,600.00	89.76	270.17	6,141.69	169.54	-416.04	419.37	0.00	0.00	0.00
6,700.00	89.76	270.17	6,142.11	169.85	-516.04	519.36	0.00	0.00	0.00
6,800.00	89.76	270.17	6,142.53	170.15	-616.04	619.34	0.00	0.00	0.00
6,900.00	89.76	270.17	6,142.95	170.46	-716.04	719.33	0.00	0.00	0.00
7,000.00	89.76	270.17	6,143.36	170.76	-816.04	819.31	0.00	0.00	0.00
7,100.00	89.76	270.17	6,143.78	171.07	-916.03	919.30	0.00	0.00	0.00
7,200.00	89.76	270.17	6,144.20	171.37	-1,016.03	1,019.28	0.00	0.00	0.00
7,300.00	89.76	270.17	6,144.61	171.68	-1,116.03	1,119.26	0.00	0.00	0.00
7,400.00	89.76	270.17	6,145.03	171.98	-1,216.03	1,219.25	0.00	0.00	0.00
7,500.00	89.76	270.17	6,145.45	172.29	-1,316.03	1,319.23	0.00	0.00	0.00
7,600.00	89.76	270.17	6,145.86	172.59	-1,416.03	1,419.22	0.00	0.00	0.00
7,700.00	89.76	270.17	6,146.28	172.90	-1,516.03	1,519.20	0.00	0.00	0.00
7,800.00	89.76	270.17	6,146.70	173.20	-1,616.03	1,619.19	0.00	0.00	0.00
7,900.00	89.76	270.17	6,147.12	173.51	-1,716.02	1,719.17	0.00	0.00	0.00
8,000.00	89.76	270.17	6,147.53	173.81	-1,816.02	1,819.16	0.00	0.00	0.00
8,100.00	89.76	270.17	6,147.95	174.12	-1,916.02	1,919.14	0.00	0.00	0.00
8,200.00	89.76	270.17	6,148.37	174.43	-2,016.02	2,019.13	0.00	0.00	0.00
8,300.00	89.76	270.17	6,148.78	174.73	-2,116.02	2,119.11	0.00	0.00	0.00
8,400.00	89.76	270.17	6,149.20	175.04	-2,216.02	2,219.09	0.00	0.00	0.00
8,500.00	89.76	270.17	6,149.62	175.34	-2,316.02	2,319.08	0.00	0.00	0.00
8,600.00	89.76	270.17	6,150.03	175.65	-2,416.01	2,419.06	0.00	0.00	0.00
8,700.00	89.76	270.17	6,150.45	175.95	-2,516.01	2,519.05	0.00	0.00	0.00
8,800.00	89.76	270.17	6,150.87	176.26	-2,616.01	2,619.03	0.00	0.00	0.00
8,900.00	89.76	270.17	6,151.29	176.56	-2,716.01	2,719.02	0.00	0.00	0.00
9,000.00	89.76	270.17	6,151.70	176.87	-2,816.01	2,819.00	0.00	0.00	0.00
9,100.00	89.76	270.17	6,152.12	177.17	-2,916.01	2,918.99	0.00	0.00	0.00

Database:	Casper District	Local Co-ordinate Reference:	Well Anschutz Equus Farms 03-62-04-5649B2
Company:	Bill Barrett Corp.	TVD Reference:	WELL @ 4591.00ft (Original Well Elev)
Project:	Weld County, CO NAD 83	MD Reference:	WELL @ 4591.00ft (Original Well Elev)
Site:	Anschutz Equus Farms 3-62-4 5 SESE Pad	North Reference:	True
Well:	Anschutz Equus Farms 03-62-04-5649B2	Survey Calculation Method:	Minimum Curvature
Wellbore:	OH		
Design:	Plan #1		

Planned Survey										
Measured Depth (ft)	Inclination (°)	Azimuth (°)	Vertical Depth (ft)	+N/-S (ft)	+E/-W (ft)	Vertical Section (ft)	Dogleg Rate (°/100ft)	Build Rate (°/100ft)	Turn Rate (°/100ft)	
9,200.00	89.76	270.17	6,152.54	177.48	-3,016.01	3,018.97	0.00	0.00	0.00	
9,300.00	89.76	270.17	6,152.95	177.78	-3,116.01	3,118.95	0.00	0.00	0.00	
9,400.00	89.76	270.17	6,153.37	178.09	-3,216.00	3,218.94	0.00	0.00	0.00	
9,500.00	89.76	270.17	6,153.79	178.39	-3,316.00	3,318.92	0.00	0.00	0.00	
9,600.00	89.76	270.17	6,154.20	178.70	-3,416.00	3,418.91	0.00	0.00	0.00	
9,700.00	89.76	270.17	6,154.62	179.01	-3,516.00	3,518.89	0.00	0.00	0.00	
9,800.00	89.76	270.17	6,155.04	179.31	-3,616.00	3,618.88	0.00	0.00	0.00	
9,900.00	89.76	270.17	6,155.46	179.62	-3,716.00	3,718.86	0.00	0.00	0.00	
10,000.00	89.76	270.17	6,155.87	179.92	-3,816.00	3,818.85	0.00	0.00	0.00	
10,100.00	89.76	270.17	6,156.29	180.23	-3,915.99	3,918.83	0.00	0.00	0.00	
10,200.00	89.76	270.17	6,156.71	180.53	-4,015.99	4,018.82	0.00	0.00	0.00	
10,300.00	89.76	270.17	6,157.12	180.84	-4,115.99	4,118.80	0.00	0.00	0.00	
10,400.00	89.76	270.17	6,157.54	181.14	-4,215.99	4,218.78	0.00	0.00	0.00	
10,500.00	89.76	270.17	6,157.96	181.45	-4,315.99	4,318.77	0.00	0.00	0.00	
10,600.00	89.76	270.17	6,158.37	181.75	-4,415.99	4,418.75	0.00	0.00	0.00	
10,700.00	89.76	270.17	6,158.79	182.06	-4,515.99	4,518.74	0.00	0.00	0.00	
10,800.00	89.76	270.17	6,159.21	182.36	-4,615.99	4,618.72	0.00	0.00	0.00	
10,900.00	89.76	270.17	6,159.63	182.67	-4,715.98	4,718.71	0.00	0.00	0.00	
11,000.00	89.76	270.17	6,160.04	182.97	-4,815.98	4,818.69	0.00	0.00	0.00	
11,100.00	89.76	270.17	6,160.46	183.28	-4,915.98	4,918.68	0.00	0.00	0.00	
11,200.00	89.76	270.17	6,160.88	183.59	-5,015.98	5,018.66	0.00	0.00	0.00	
11,300.00	89.76	270.17	6,161.29	183.89	-5,115.98	5,118.65	0.00	0.00	0.00	
11,400.00	89.76	270.17	6,161.71	184.20	-5,215.98	5,218.63	0.00	0.00	0.00	
11,500.00	89.76	270.17	6,162.13	184.50	-5,315.98	5,318.61	0.00	0.00	0.00	
11,600.00	89.76	270.17	6,162.55	184.81	-5,415.97	5,418.60	0.00	0.00	0.00	
11,700.00	89.76	270.17	6,162.96	185.11	-5,515.97	5,518.58	0.00	0.00	0.00	
11,800.00	89.76	270.17	6,163.38	185.42	-5,615.97	5,618.57	0.00	0.00	0.00	
11,900.00	89.76	270.17	6,163.80	185.72	-5,715.97	5,718.55	0.00	0.00	0.00	
12,000.00	89.76	270.17	6,164.21	186.03	-5,815.97	5,818.54	0.00	0.00	0.00	
12,100.00	89.76	270.17	6,164.63	186.33	-5,915.97	5,918.52	0.00	0.00	0.00	
12,200.00	89.76	270.17	6,165.05	186.64	-6,015.97	6,018.51	0.00	0.00	0.00	
12,300.00	89.76	270.17	6,165.46	186.94	-6,115.97	6,118.49	0.00	0.00	0.00	
12,400.00	89.76	270.17	6,165.88	187.25	-6,215.96	6,218.47	0.00	0.00	0.00	
12,500.00	89.76	270.17	6,166.30	187.55	-6,315.96	6,318.46	0.00	0.00	0.00	
12,600.00	89.76	270.17	6,166.72	187.86	-6,415.96	6,418.44	0.00	0.00	0.00	
12,700.00	89.76	270.17	6,167.13	188.17	-6,515.96	6,518.43	0.00	0.00	0.00	
12,800.00	89.76	270.17	6,167.55	188.47	-6,615.96	6,618.41	0.00	0.00	0.00	
12,900.00	89.76	270.17	6,167.97	188.78	-6,715.96	6,718.40	0.00	0.00	0.00	
13,000.00	89.76	270.17	6,168.38	189.08	-6,815.96	6,818.38	0.00	0.00	0.00	
13,100.00	89.76	270.17	6,168.80	189.39	-6,915.95	6,918.37	0.00	0.00	0.00	
13,200.00	89.76	270.17	6,169.22	189.69	-7,015.95	7,018.35	0.00	0.00	0.00	
13,300.00	89.76	270.17	6,169.63	190.00	-7,115.95	7,118.34	0.00	0.00	0.00	
13,400.00	89.76	270.17	6,170.05	190.30	-7,215.95	7,218.32	0.00	0.00	0.00	
13,500.00	89.76	270.17	6,170.47	190.61	-7,315.95	7,318.30	0.00	0.00	0.00	
13,600.00	89.76	270.17	6,170.89	190.91	-7,415.95	7,418.29	0.00	0.00	0.00	
13,700.00	89.76	270.17	6,171.30	191.22	-7,515.95	7,518.27	0.00	0.00	0.00	
13,800.00	89.76	270.17	6,171.72	191.52	-7,615.95	7,618.26	0.00	0.00	0.00	
13,900.00	89.76	270.17	6,172.14	191.83	-7,715.94	7,718.24	0.00	0.00	0.00	
14,000.00	89.76	270.17	6,172.55	192.13	-7,815.94	7,818.23	0.00	0.00	0.00	
14,100.00	89.76	270.17	6,172.97	192.44	-7,915.94	7,918.21	0.00	0.00	0.00	
14,200.00	89.76	270.17	6,173.39	192.75	-8,015.94	8,018.20	0.00	0.00	0.00	
14,300.00	89.76	270.17	6,173.80	193.05	-8,115.94	8,118.18	0.00	0.00	0.00	
14,400.00	89.76	270.17	6,174.22	193.36	-8,215.94	8,218.17	0.00	0.00	0.00	

Database:	Casper District	Local Co-ordinate Reference:	Well Anschutz Equus Farms 03-62-04-5649B2
Company:	Bill Barrett Corp.	TVD Reference:	WELL @ 4591.00ft (Original Well Elev)
Project:	Weld County, CO NAD 83	MD Reference:	WELL @ 4591.00ft (Original Well Elev)
Site:	Anschutz Equus Farms 3-62-4 5 SESE Pad	North Reference:	True
Well:	Anschutz Equus Farms 03-62-04-5649B2	Survey Calculation Method:	Minimum Curvature
Wellbore:	OH		
Design:	Plan #1		

Planned Survey										
Measured Depth (ft)	Inclination (°)	Azimuth (°)	Vertical Depth (ft)	+N/-S (ft)	+E/-W (ft)	Vertical Section (ft)	Dogleg Rate (°/100ft)	Build Rate (°/100ft)	Turn Rate (°/100ft)	
14,500.00	89.76	270.17	6,174.64	193.66	-8,315.94	8,318.15	0.00	0.00	0.00	
14,600.00	89.76	270.17	6,175.06	193.97	-8,415.93	8,418.13	0.00	0.00	0.00	
14,700.00	89.76	270.17	6,175.47	194.27	-8,515.93	8,518.12	0.00	0.00	0.00	
14,800.00	89.76	270.17	6,175.89	194.58	-8,615.93	8,618.10	0.00	0.00	0.00	
14,900.00	89.76	270.17	6,176.31	194.88	-8,715.93	8,718.09	0.00	0.00	0.00	
15,000.00	89.76	270.17	6,176.72	195.19	-8,815.93	8,818.07	0.00	0.00	0.00	
15,100.00	89.76	270.17	6,177.14	195.49	-8,915.93	8,918.06	0.00	0.00	0.00	
15,200.00	89.76	270.17	6,177.56	195.80	-9,015.93	9,018.04	0.00	0.00	0.00	
15,300.00	89.76	270.17	6,177.97	196.10	-9,115.93	9,118.03	0.00	0.00	0.00	
15,400.00	89.76	270.17	6,178.39	196.41	-9,215.92	9,218.01	0.00	0.00	0.00	
15,500.00	89.76	270.17	6,178.81	196.71	-9,315.92	9,318.00	0.00	0.00	0.00	
15,600.00	89.76	270.17	6,179.23	197.02	-9,415.92	9,417.98	0.00	0.00	0.00	
15,700.00	89.76	270.17	6,179.64	197.33	-9,515.92	9,517.96	0.00	0.00	0.00	
15,800.00	89.76	270.17	6,180.06	197.63	-9,615.92	9,617.95	0.00	0.00	0.00	
15,900.00	89.76	270.17	6,180.48	197.94	-9,715.92	9,717.93	0.00	0.00	0.00	
16,000.00	89.76	270.17	6,180.89	198.24	-9,815.92	9,817.92	0.00	0.00	0.00	
16,025.60	89.76	270.17	6,181.00	198.32	-9,841.52	9,843.52	0.00	0.00	0.00	
TD at 16025.60 - 03-62-4-564982 PBHL										

Design Targets										
Target Name	Dip Angle (°)	Dip Dir. (°)	TVD (ft)	+N/-S (ft)	+E/-W (ft)	Northing (usft)	Easting (usft)	Latitude	Longitude	
03-62-4-564982 LP	0.00	0.00	6,141.00	169.04	-249.69	1,336,249.63	3,329,042.17	40° 15' 1.440 N	104° 19' 16.070 W	
- hit/miss target										
- Shape										
- plan misses target center by 0.01ft at 6433.65ft MD (6141.00 TVD, 169.03 N, -249.69 E)										
- Point										
03-62-4-564982 PBHL	0.00	0.00	6,181.00	198.32	-9,841.52	1,336,151.30	3,319,450.83	40° 15' 1.710 N	104° 21' 19.780 W	
- plan hits target center										
- Point										

Plan Annotations					
Measured Depth (ft)	Vertical Depth (ft)	Local Coordinates			
		+N/-S (ft)	+E/-W (ft)	Comment	
800.00	800.00	0.00	0.00	Start Build 2.00	
1,300.08	1,297.54	25.94	34.96	Start 1117.80 hold at 1300.08 MD	
2,417.88	2,398.36	141.64	190.86	Start Drop -2.00	
2,917.96	2,895.90	167.58	225.82	Start 2767.64 hold at 2917.96 MD	
5,685.60	5,663.54	167.58	225.82	Start DLS 12.00 TFO 270.17	
6,433.61	6,141.00	169.03	-249.65	Start 9592.00 hold at 6433.61 MD	
16,025.60	6,181.00	198.32	-9,841.52	TD at 16025.60	