

PROJECT DETAILS: Weld County, CO NAD 83

Geodetic System: US State Plane 1983
 Datum: North American Datum 1983
 Ellipsoid: GRS 1980
 Zone: Colorado Northern Zone
 System Datum: Mean Sea Level
 Local North: True

Project: Weld County, CO NAD 83
 Site: Anschutz Equus Farms 3-62-4 5 SESE Pac
 Well: Anschutz Equus Farms 03-62-04-5649C2
 Wellbore: OH
 Design: Plan #1



Azimuths to True North
 Magnetic North: 8.22°

Magnetic Field
 Strength: 52542.6snT
 Dip Angle: 66.91°
 Date: 2/12/2016
 Model: BGGM2015

SECTION DETAILS

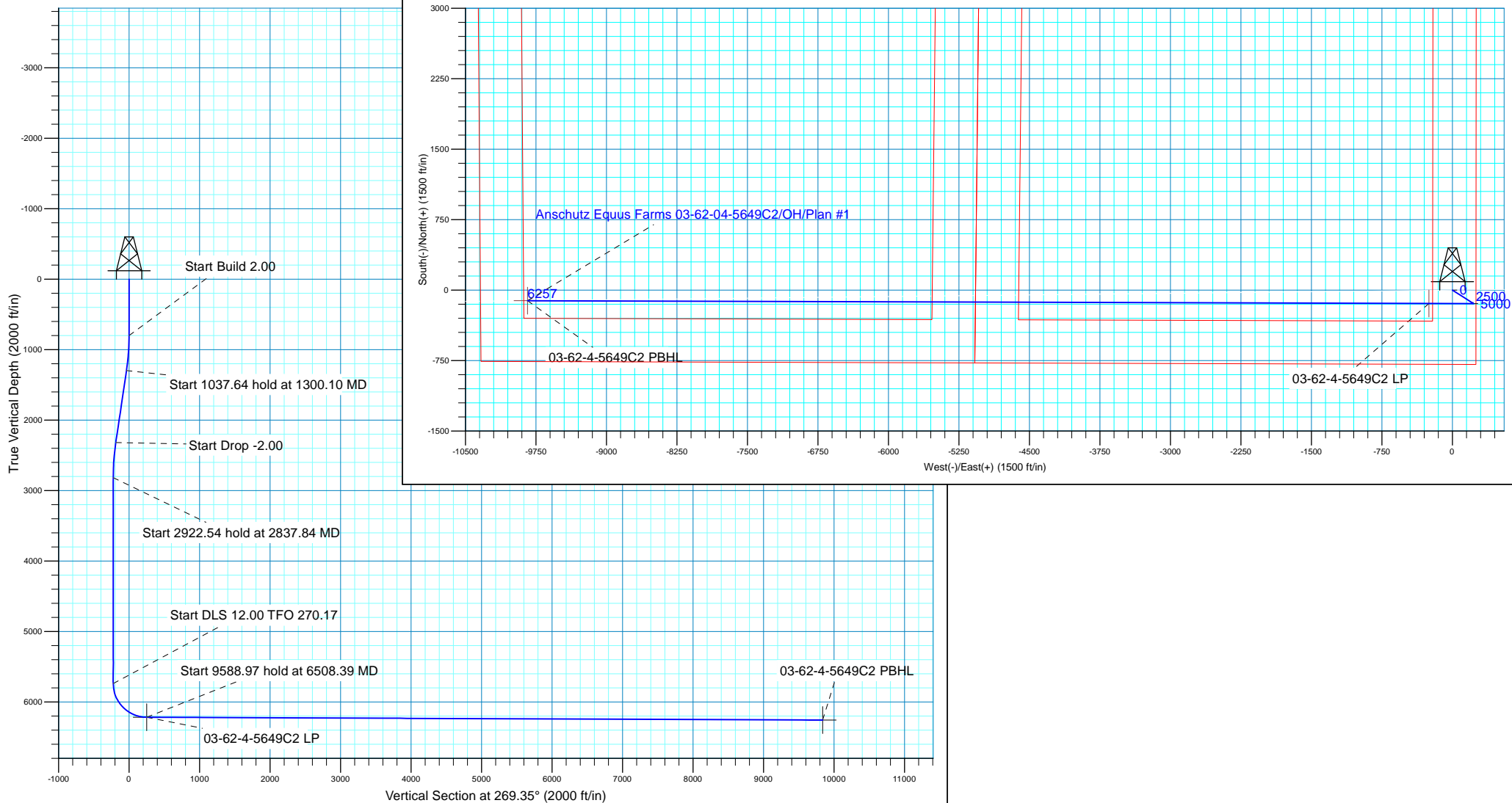
MD	Inc	Azi	TVD	+N/-S	+E/-W	Dleg	TFace	VSect
0.00	0.00	0.00	0.00	0.00	0.00	0.00	0.00	0.00
800.00	0.00	0.00	800.00	0.00	0.00	0.00	0.00	0.00
1300.10	10.00	122.37	1297.57	-23.31	36.78	2.00	122.37	-36.51
2337.74	10.00	122.37	2319.43	-119.79	188.99	0.00	0.00	-187.61
2837.84	0.00	0.00	2817.00	-143.10	225.77	2.00	180.00	-224.12
5760.38	0.00	0.00	5739.54	-143.10	225.77	0.00	0.00	-224.12
6508.39	89.76	270.17	6217.00	-141.65	-249.70	12.00	270.17	251.30
16097.37	89.76	270.17	6257.00	-112.38	-9838.55	0.00	0.00	9839.19

Plan: Plan #1 (Anschutz Equus Farms 03-62-04-5649C2/OH)

Created By: rscott Date: 17:51, February 15 2016

WELL DETAILS: Anschutz Equus Farms 03-62-04-5649C2

GL 4591 @ 4591.00ft (Original Well Elev) 4591.00
 Northing Easting Latitude Longitude
 0.00 0.00 1336069.80 3329294.28 40° 14' 59.630 N 104° 19' 12.850 W





Bill Barrett Corp.

Weld County, CO NAD 83

Anschutz Equus Farms 3-62-4 5 SESE Pad

Anschutz Equus Farms 03-62-04-5649C2

OH

Plan: Plan #1

Standard Planning Report

15 February, 2016



Database:	Casper District	Local Co-ordinate Reference:	Well Anschutz Equus Farms 03-62-04-5649C2
Company:	Bill Barrett Corp.	TVD Reference:	GL 4591 @ 4591.00ft (Original Well Elev)
Project:	Weld County, CO NAD 83	MD Reference:	GL 4591 @ 4591.00ft (Original Well Elev)
Site:	Anschutz Equus Farms 3-62-4 5 SESE Pad	North Reference:	True
Well:	Anschutz Equus Farms 03-62-04-5649C2	Survey Calculation Method:	Minimum Curvature
Wellbore:	OH		
Design:	Plan #1		

Project	Weld County, CO NAD 83		
Map System:	US State Plane 1983	System Datum:	Mean Sea Level
Geo Datum:	North American Datum 1983		
Map Zone:	Colorado Northern Zone		

Site	Anschutz Equus Farms 3-62-4 5 SESE Pad, SE 1/4 SE 1/4, SECTION 4, T3N, R62WJ.. 6th P.M.			
Site Position:		Northing:	1,336,024.28 usft	Latitude: 40° 14' 59.180 N
From:	Lat/Long	Easting:	3,329,294.89 usft	Longitude: 104° 19' 12.850 W
Position Uncertainty:	0.00 ft	Slot Radius:	13.200 in	Grid Convergence: 0.76 °

Well	Anschutz Equus Farms 03-62-04-5649C2, 790 FSL 250 FEL			
Well Position	+N/-S	45.52 ft	Northing:	1,336,069.80 usft
	+E/-W	0.00 ft	Easting:	3,329,294.28 usft
Position Uncertainty		0.00 ft	Wellhead Elevation:	0.00 ft
			Ground Level:	4,591.00 ft

Wellbore	OH				
Magnetics	Model Name	Sample Date	Declination (°)	Dip Angle (°)	Field Strength (nT)
	BGGM2015	2/12/2016	8.22	66.91	52,543

Design	Plan #1			
Audit Notes:				
Version:	Phase:	PLAN	Tie On Depth:	0.00
Vertical Section:	Depth From (TVD) (ft)	+N/-S (ft)	+E/-W (ft)	Direction (°)
	0.00	0.00	0.00	269.35

Plan Sections										
Measured Depth (ft)	Inclination (°)	Azimuth (°)	Vertical Depth (ft)	+N/-S (ft)	+E/-W (ft)	Dogleg Rate (°/100ft)	Build Rate (°/100ft)	Turn Rate (°/100ft)	TFO (°)	Target
0.00	0.00	0.00	0.00	0.00	0.00	0.00	0.00	0.00	0.00	
800.00	0.00	0.00	800.00	0.00	0.00	0.00	0.00	0.00	0.00	
1,300.10	10.00	122.37	1,297.57	-23.31	36.78	2.00	2.00	0.00	122.37	
2,337.74	10.00	122.37	2,319.44	-119.79	188.99	0.00	0.00	0.00	0.00	
2,837.84	0.00	0.00	2,817.00	-143.10	225.77	2.00	-2.00	0.00	180.00	
5,760.38	0.00	0.00	5,739.54	-143.10	225.77	0.00	0.00	0.00	0.00	
6,508.39	89.76	270.17	6,217.00	-141.65	-249.70	12.00	12.00	-12.01	270.17	
16,097.37	89.76	270.17	6,257.00	-112.38	-9,838.55	0.00	0.00	0.00	0.00	03-62-4-5649C2 PBH

Database:	Casper District	Local Co-ordinate Reference:	Well Anschutz Equus Farms 03-62-04-5649C2
Company:	Bill Barrett Corp.	TVD Reference:	GL 4591 @ 4591.00ft (Original Well Elev)
Project:	Weld County, CO NAD 83	MD Reference:	GL 4591 @ 4591.00ft (Original Well Elev)
Site:	Anschutz Equus Farms 3-62-4 5 SESE Pad	North Reference:	True
Well:	Anschutz Equus Farms 03-62-04-5649C2	Survey Calculation Method:	Minimum Curvature
Wellbore:	OH		
Design:	Plan #1		

Planned Survey										
Measured Depth (ft)	Inclination (°)	Azimuth (°)	Vertical Depth (ft)	+N/-S (ft)	+E/-W (ft)	Vertical Section (ft)	Dogleg Rate (°/100ft)	Build Rate (°/100ft)	Turn Rate (°/100ft)	
0.00	0.00	0.00	0.00	0.00	0.00	0.00	0.00	0.00	0.00	
100.00	0.00	0.00	100.00	0.00	0.00	0.00	0.00	0.00	0.00	
200.00	0.00	0.00	200.00	0.00	0.00	0.00	0.00	0.00	0.00	
300.00	0.00	0.00	300.00	0.00	0.00	0.00	0.00	0.00	0.00	
400.00	0.00	0.00	400.00	0.00	0.00	0.00	0.00	0.00	0.00	
500.00	0.00	0.00	500.00	0.00	0.00	0.00	0.00	0.00	0.00	
600.00	0.00	0.00	600.00	0.00	0.00	0.00	0.00	0.00	0.00	
700.00	0.00	0.00	700.00	0.00	0.00	0.00	0.00	0.00	0.00	
800.00	0.00	0.00	800.00	0.00	0.00	0.00	0.00	0.00	0.00	
Start Build 2.00										
900.00	2.00	122.37	899.98	-0.93	1.47	-1.46	2.00	2.00	0.00	
1,000.00	4.00	122.37	999.84	-3.74	5.89	-5.85	2.00	2.00	0.00	
1,100.00	6.00	122.37	1,099.45	-8.40	13.26	-13.16	2.00	2.00	0.00	
1,200.00	8.00	122.37	1,198.70	-14.93	23.55	-23.38	2.00	2.00	0.00	
1,300.00	10.00	122.37	1,297.47	-23.30	36.76	-36.49	2.00	2.00	0.00	
1,300.10	10.00	122.37	1,297.57	-23.31	36.78	-36.51	2.00	2.00	0.00	
Start 1037.64 hold at 1300.10 MD										
1,400.00	10.00	122.37	1,395.95	-32.60	51.43	-51.05	0.00	0.00	0.00	
1,500.00	10.00	122.37	1,494.43	-41.90	66.10	-65.62	0.00	0.00	0.00	
1,600.00	10.00	122.37	1,592.91	-51.19	80.77	-80.18	0.00	0.00	0.00	
1,700.00	10.00	122.37	1,691.39	-60.49	95.44	-94.74	0.00	0.00	0.00	
1,800.00	10.00	122.37	1,789.87	-69.79	110.11	-109.30	0.00	0.00	0.00	
1,900.00	10.00	122.37	1,888.35	-79.09	124.78	-123.87	0.00	0.00	0.00	
2,000.00	10.00	122.37	1,986.83	-88.39	139.45	-138.43	0.00	0.00	0.00	
2,100.00	10.00	122.37	2,085.31	-97.69	154.12	-152.99	0.00	0.00	0.00	
2,200.00	10.00	122.37	2,183.79	-106.98	168.79	-167.56	0.00	0.00	0.00	
2,300.00	10.00	122.37	2,282.27	-116.28	183.46	-182.12	0.00	0.00	0.00	
2,337.74	10.00	122.37	2,319.44	-119.79	188.99	-187.61	0.00	0.00	0.00	
Start Drop -2.00										
2,400.00	8.76	122.37	2,380.86	-125.22	197.56	-196.12	2.00	-2.00	0.00	
2,500.00	6.76	122.37	2,479.94	-132.45	208.96	-207.44	2.00	-2.00	0.00	
2,600.00	4.76	122.37	2,579.43	-137.82	217.44	-215.85	2.00	-2.00	0.00	
2,700.00	2.76	122.37	2,679.21	-141.32	222.97	-221.34	2.00	-2.00	0.00	
2,800.00	0.76	122.37	2,779.16	-142.97	225.56	-223.91	2.00	-2.00	0.00	
2,837.84	0.00	0.00	2,817.00	-143.10	225.77	-224.12	2.00	-2.00	0.00	
Start 2922.54 hold at 2837.84 MD										
2,900.00	0.00	0.00	2,879.16	-143.10	225.77	-224.12	0.00	0.00	0.00	
3,000.00	0.00	0.00	2,979.16	-143.10	225.77	-224.12	0.00	0.00	0.00	
3,100.00	0.00	0.00	3,079.16	-143.10	225.77	-224.12	0.00	0.00	0.00	
3,200.00	0.00	0.00	3,179.16	-143.10	225.77	-224.12	0.00	0.00	0.00	
3,300.00	0.00	0.00	3,279.16	-143.10	225.77	-224.12	0.00	0.00	0.00	
3,400.00	0.00	0.00	3,379.16	-143.10	225.77	-224.12	0.00	0.00	0.00	
3,500.00	0.00	0.00	3,479.16	-143.10	225.77	-224.12	0.00	0.00	0.00	
3,600.00	0.00	0.00	3,579.16	-143.10	225.77	-224.12	0.00	0.00	0.00	
3,700.00	0.00	0.00	3,679.16	-143.10	225.77	-224.12	0.00	0.00	0.00	
3,800.00	0.00	0.00	3,779.16	-143.10	225.77	-224.12	0.00	0.00	0.00	
3,900.00	0.00	0.00	3,879.16	-143.10	225.77	-224.12	0.00	0.00	0.00	
4,000.00	0.00	0.00	3,979.16	-143.10	225.77	-224.12	0.00	0.00	0.00	
4,100.00	0.00	0.00	4,079.16	-143.10	225.77	-224.12	0.00	0.00	0.00	
4,200.00	0.00	0.00	4,179.16	-143.10	225.77	-224.12	0.00	0.00	0.00	
4,300.00	0.00	0.00	4,279.16	-143.10	225.77	-224.12	0.00	0.00	0.00	
4,400.00	0.00	0.00	4,379.16	-143.10	225.77	-224.12	0.00	0.00	0.00	
4,500.00	0.00	0.00	4,479.16	-143.10	225.77	-224.12	0.00	0.00	0.00	

Database:	Casper District	Local Co-ordinate Reference:	Well Anschutz Equus Farms 03-62-04-5649C2
Company:	Bill Barrett Corp.	TVD Reference:	GL 4591 @ 4591.00ft (Original Well Elev)
Project:	Weld County, CO NAD 83	MD Reference:	GL 4591 @ 4591.00ft (Original Well Elev)
Site:	Anschutz Equus Farms 3-62-4 5 SESE Pad	North Reference:	True
Well:	Anschutz Equus Farms 03-62-04-5649C2	Survey Calculation Method:	Minimum Curvature
Wellbore:	OH		
Design:	Plan #1		

Planned Survey									
Measured Depth (ft)	Inclination (°)	Azimuth (°)	Vertical Depth (ft)	+N/-S (ft)	+E/-W (ft)	Vertical Section (ft)	Dogleg Rate (°/100ft)	Build Rate (°/100ft)	Turn Rate (°/100ft)
4,600.00	0.00	0.00	4,579.16	-143.10	225.77	-224.12	0.00	0.00	0.00
4,700.00	0.00	0.00	4,679.16	-143.10	225.77	-224.12	0.00	0.00	0.00
4,800.00	0.00	0.00	4,779.16	-143.10	225.77	-224.12	0.00	0.00	0.00
4,900.00	0.00	0.00	4,879.16	-143.10	225.77	-224.12	0.00	0.00	0.00
5,000.00	0.00	0.00	4,979.16	-143.10	225.77	-224.12	0.00	0.00	0.00
5,100.00	0.00	0.00	5,079.16	-143.10	225.77	-224.12	0.00	0.00	0.00
5,200.00	0.00	0.00	5,179.16	-143.10	225.77	-224.12	0.00	0.00	0.00
5,300.00	0.00	0.00	5,279.16	-143.10	225.77	-224.12	0.00	0.00	0.00
5,400.00	0.00	0.00	5,379.16	-143.10	225.77	-224.12	0.00	0.00	0.00
5,500.00	0.00	0.00	5,479.16	-143.10	225.77	-224.12	0.00	0.00	0.00
5,600.00	0.00	0.00	5,579.16	-143.10	225.77	-224.12	0.00	0.00	0.00
5,700.00	0.00	0.00	5,679.16	-143.10	225.77	-224.12	0.00	0.00	0.00
5,760.38	0.00	0.00	5,739.54	-143.10	225.77	-224.12	0.00	0.00	0.00
Start DLS 12.00 TFO 270.17									
5,800.00	4.75	270.17	5,779.11	-143.09	224.13	-222.48	12.00	12.00	0.00
5,900.00	16.75	270.17	5,877.18	-143.04	205.50	-203.86	12.00	12.00	0.00
6,000.00	28.75	270.17	5,969.23	-142.92	166.90	-165.25	12.00	12.00	0.00
6,100.00	40.75	270.17	6,051.24	-142.75	109.99	-108.36	12.00	12.00	0.00
6,200.00	52.75	270.17	6,119.62	-142.52	37.29	-35.66	12.00	12.00	0.00
6,300.00	64.75	270.17	6,171.40	-142.26	-48.05	49.67	12.00	12.00	0.00
6,400.00	76.75	270.17	6,204.30	-141.98	-142.29	143.90	12.00	12.00	0.00
6,500.00	88.75	270.17	6,216.89	-141.67	-241.31	242.91	12.00	12.00	0.00
6,508.39	89.76	270.17	6,217.00	-141.65	-249.70	251.30	12.00	12.00	0.00
Start 9588.97 hold at 6508.39 MD - 03-62-4-5649C2 LP									
6,600.00	89.76	270.17	6,217.38	-141.37	-341.31	342.90	0.00	0.00	0.00
6,700.00	89.76	270.17	6,217.80	-141.06	-441.31	442.89	0.00	0.00	0.00
6,800.00	89.76	270.17	6,218.22	-140.76	-541.31	542.88	0.00	0.00	0.00
6,900.00	89.76	270.17	6,218.63	-140.45	-641.30	642.87	0.00	0.00	0.00
7,000.00	89.76	270.17	6,219.05	-140.15	-741.30	742.86	0.00	0.00	0.00
7,100.00	89.76	270.17	6,219.47	-139.84	-841.30	842.84	0.00	0.00	0.00
7,200.00	89.76	270.17	6,219.89	-139.54	-941.30	942.83	0.00	0.00	0.00
7,300.00	89.76	270.17	6,220.30	-139.23	-1,041.30	1,042.82	0.00	0.00	0.00
7,400.00	89.76	270.17	6,220.72	-138.93	-1,141.30	1,142.81	0.00	0.00	0.00
7,500.00	89.76	270.17	6,221.14	-138.62	-1,241.30	1,242.80	0.00	0.00	0.00
7,600.00	89.76	270.17	6,221.55	-138.32	-1,341.30	1,342.79	0.00	0.00	0.00
7,700.00	89.76	270.17	6,221.97	-138.01	-1,441.29	1,442.78	0.00	0.00	0.00
7,800.00	89.76	270.17	6,222.39	-137.71	-1,541.29	1,542.76	0.00	0.00	0.00
7,900.00	89.76	270.17	6,222.81	-137.40	-1,641.29	1,642.75	0.00	0.00	0.00
8,000.00	89.76	270.17	6,223.22	-137.10	-1,741.29	1,742.74	0.00	0.00	0.00
8,100.00	89.76	270.17	6,223.64	-136.79	-1,841.29	1,842.73	0.00	0.00	0.00
8,200.00	89.76	270.17	6,224.06	-136.48	-1,941.29	1,942.72	0.00	0.00	0.00
8,300.00	89.76	270.17	6,224.47	-136.18	-2,041.29	2,042.71	0.00	0.00	0.00
8,400.00	89.76	270.17	6,224.89	-135.87	-2,141.28	2,142.70	0.00	0.00	0.00
8,500.00	89.76	270.17	6,225.31	-135.57	-2,241.28	2,242.69	0.00	0.00	0.00
8,600.00	89.76	270.17	6,225.73	-135.26	-2,341.28	2,342.67	0.00	0.00	0.00
8,700.00	89.76	270.17	6,226.14	-134.96	-2,441.28	2,442.66	0.00	0.00	0.00
8,800.00	89.76	270.17	6,226.56	-134.65	-2,541.28	2,542.65	0.00	0.00	0.00
8,900.00	89.76	270.17	6,226.98	-134.35	-2,641.28	2,642.64	0.00	0.00	0.00
9,000.00	89.76	270.17	6,227.39	-134.04	-2,741.28	2,742.63	0.00	0.00	0.00
9,100.00	89.76	270.17	6,227.81	-133.74	-2,841.28	2,842.62	0.00	0.00	0.00
9,200.00	89.76	270.17	6,228.23	-133.43	-2,941.27	2,942.61	0.00	0.00	0.00
9,300.00	89.76	270.17	6,228.65	-133.13	-3,041.27	3,042.59	0.00	0.00	0.00
9,400.00	89.76	270.17	6,229.06	-132.82	-3,141.27	3,142.58	0.00	0.00	0.00

Database:	Casper District	Local Co-ordinate Reference:	Well Anschutz Equus Farms 03-62-04-5649C2
Company:	Bill Barrett Corp.	TVD Reference:	GL 4591 @ 4591.00ft (Original Well Elev)
Project:	Weld County, CO NAD 83	MD Reference:	GL 4591 @ 4591.00ft (Original Well Elev)
Site:	Anschutz Equus Farms 3-62-4 5 SESE Pad	North Reference:	True
Well:	Anschutz Equus Farms 03-62-04-5649C2	Survey Calculation Method:	Minimum Curvature
Wellbore:	OH		
Design:	Plan #1		

Planned Survey									
Measured Depth (ft)	Inclination (°)	Azimuth (°)	Vertical Depth (ft)	+N/-S (ft)	+E/-W (ft)	Vertical Section (ft)	Dogleg Rate (°/100ft)	Build Rate (°/100ft)	Turn Rate (°/100ft)
9,500.00	89.76	270.17	6,229.48	-132.52	-3,241.27	3,242.57	0.00	0.00	0.00
9,600.00	89.76	270.17	6,229.90	-132.21	-3,341.27	3,342.56	0.00	0.00	0.00
9,700.00	89.76	270.17	6,230.31	-131.91	-3,441.27	3,442.55	0.00	0.00	0.00
9,800.00	89.76	270.17	6,230.73	-131.60	-3,541.27	3,542.54	0.00	0.00	0.00
9,900.00	89.76	270.17	6,231.15	-131.30	-3,641.26	3,642.53	0.00	0.00	0.00
10,000.00	89.76	270.17	6,231.57	-130.99	-3,741.26	3,742.52	0.00	0.00	0.00
10,100.00	89.76	270.17	6,231.98	-130.69	-3,841.26	3,842.50	0.00	0.00	0.00
10,200.00	89.76	270.17	6,232.40	-130.38	-3,941.26	3,942.49	0.00	0.00	0.00
10,300.00	89.76	270.17	6,232.82	-130.07	-4,041.26	4,042.48	0.00	0.00	0.00
10,400.00	89.76	270.17	6,233.23	-129.77	-4,141.26	4,142.47	0.00	0.00	0.00
10,500.00	89.76	270.17	6,233.65	-129.46	-4,241.26	4,242.46	0.00	0.00	0.00
10,600.00	89.76	270.17	6,234.07	-129.16	-4,341.26	4,342.45	0.00	0.00	0.00
10,700.00	89.76	270.17	6,234.49	-128.85	-4,441.25	4,442.44	0.00	0.00	0.00
10,800.00	89.76	270.17	6,234.90	-128.55	-4,541.25	4,542.42	0.00	0.00	0.00
10,900.00	89.76	270.17	6,235.32	-128.24	-4,641.25	4,642.41	0.00	0.00	0.00
11,000.00	89.76	270.17	6,235.74	-127.94	-4,741.25	4,742.40	0.00	0.00	0.00
11,100.00	89.76	270.17	6,236.15	-127.63	-4,841.25	4,842.39	0.00	0.00	0.00
11,200.00	89.76	270.17	6,236.57	-127.33	-4,941.25	4,942.38	0.00	0.00	0.00
11,300.00	89.76	270.17	6,236.99	-127.02	-5,041.25	5,042.37	0.00	0.00	0.00
11,400.00	89.76	270.17	6,237.41	-126.72	-5,141.24	5,142.36	0.00	0.00	0.00
11,500.00	89.76	270.17	6,237.82	-126.41	-5,241.24	5,242.35	0.00	0.00	0.00
11,600.00	89.76	270.17	6,238.24	-126.11	-5,341.24	5,342.33	0.00	0.00	0.00
11,700.00	89.76	270.17	6,238.66	-125.80	-5,441.24	5,442.32	0.00	0.00	0.00
11,800.00	89.76	270.17	6,239.07	-125.50	-5,541.24	5,542.31	0.00	0.00	0.00
11,900.00	89.76	270.17	6,239.49	-125.19	-5,641.24	5,642.30	0.00	0.00	0.00
12,000.00	89.76	270.17	6,239.91	-124.89	-5,741.24	5,742.29	0.00	0.00	0.00
12,100.00	89.76	270.17	6,240.33	-124.58	-5,841.24	5,842.28	0.00	0.00	0.00
12,200.00	89.76	270.17	6,240.74	-124.27	-5,941.23	5,942.27	0.00	0.00	0.00
12,300.00	89.76	270.17	6,241.16	-123.97	-6,041.23	6,042.25	0.00	0.00	0.00
12,400.00	89.76	270.17	6,241.58	-123.66	-6,141.23	6,142.24	0.00	0.00	0.00
12,500.00	89.76	270.17	6,241.99	-123.36	-6,241.23	6,242.23	0.00	0.00	0.00
12,600.00	89.76	270.17	6,242.41	-123.05	-6,341.23	6,342.22	0.00	0.00	0.00
12,700.00	89.76	270.17	6,242.83	-122.75	-6,441.23	6,442.21	0.00	0.00	0.00
12,800.00	89.76	270.17	6,243.25	-122.44	-6,541.23	6,542.20	0.00	0.00	0.00
12,900.00	89.76	270.17	6,243.66	-122.14	-6,641.22	6,642.19	0.00	0.00	0.00
13,000.00	89.76	270.17	6,244.08	-121.83	-6,741.22	6,742.18	0.00	0.00	0.00
13,100.00	89.76	270.17	6,244.50	-121.53	-6,841.22	6,842.16	0.00	0.00	0.00
13,200.00	89.76	270.17	6,244.91	-121.22	-6,941.22	6,942.15	0.00	0.00	0.00
13,300.00	89.76	270.17	6,245.33	-120.92	-7,041.22	7,042.14	0.00	0.00	0.00
13,400.00	89.76	270.17	6,245.75	-120.61	-7,141.22	7,142.13	0.00	0.00	0.00
13,500.00	89.76	270.17	6,246.17	-120.31	-7,241.22	7,242.12	0.00	0.00	0.00
13,600.00	89.76	270.17	6,246.58	-120.00	-7,341.22	7,342.11	0.00	0.00	0.00
13,700.00	89.76	270.17	6,247.00	-119.70	-7,441.21	7,442.10	0.00	0.00	0.00
13,800.00	89.76	270.17	6,247.42	-119.39	-7,541.21	7,542.08	0.00	0.00	0.00
13,900.00	89.76	270.17	6,247.83	-119.09	-7,641.21	7,642.07	0.00	0.00	0.00
14,000.00	89.76	270.17	6,248.25	-118.78	-7,741.21	7,742.06	0.00	0.00	0.00
14,100.00	89.76	270.17	6,248.67	-118.47	-7,841.21	7,842.05	0.00	0.00	0.00
14,200.00	89.76	270.17	6,249.09	-118.17	-7,941.21	7,942.04	0.00	0.00	0.00
14,300.00	89.76	270.17	6,249.50	-117.86	-8,041.21	8,042.03	0.00	0.00	0.00
14,400.00	89.76	270.17	6,249.92	-117.56	-8,141.20	8,142.02	0.00	0.00	0.00
14,500.00	89.76	270.17	6,250.34	-117.25	-8,241.20	8,242.00	0.00	0.00	0.00
14,600.00	89.76	270.17	6,250.75	-116.95	-8,341.20	8,341.99	0.00	0.00	0.00
14,700.00	89.76	270.17	6,251.17	-116.64	-8,441.20	8,441.98	0.00	0.00	0.00

Database:	Casper District	Local Co-ordinate Reference:	Well Anschutz Equus Farms 03-62-04-5649C2
Company:	Bill Barrett Corp.	TVD Reference:	GL 4591 @ 4591.00ft (Original Well Elev)
Project:	Weld County, CO NAD 83	MD Reference:	GL 4591 @ 4591.00ft (Original Well Elev)
Site:	Anschutz Equus Farms 3-62-4 5 SESE Pad	North Reference:	True
Well:	Anschutz Equus Farms 03-62-04-5649C2	Survey Calculation Method:	Minimum Curvature
Wellbore:	OH		
Design:	Plan #1		

Planned Survey										
Measured Depth (ft)	Inclination (°)	Azimuth (°)	Vertical Depth (ft)	+N/-S (ft)	+E/-W (ft)	Vertical Section (ft)	Dogleg Rate (°/100ft)	Build Rate (°/100ft)	Turn Rate (°/100ft)	
14,800.00	89.76	270.17	6,251.59	-116.34	-8,541.20	8,541.97	0.00	0.00	0.00	
14,900.00	89.76	270.17	6,252.01	-116.03	-8,641.20	8,641.96	0.00	0.00	0.00	
15,000.00	89.76	270.17	6,252.42	-115.73	-8,741.20	8,741.95	0.00	0.00	0.00	
15,100.00	89.76	270.17	6,252.84	-115.42	-8,841.20	8,841.94	0.00	0.00	0.00	
15,200.00	89.76	270.17	6,253.26	-115.12	-8,941.19	8,941.93	0.00	0.00	0.00	
15,300.00	89.76	270.17	6,253.67	-114.81	-9,041.19	9,041.91	0.00	0.00	0.00	
15,400.00	89.76	270.17	6,254.09	-114.51	-9,141.19	9,141.90	0.00	0.00	0.00	
15,500.00	89.76	270.17	6,254.51	-114.20	-9,241.19	9,241.89	0.00	0.00	0.00	
15,600.00	89.76	270.17	6,254.93	-113.90	-9,341.19	9,341.88	0.00	0.00	0.00	
15,700.00	89.76	270.17	6,255.34	-113.59	-9,441.19	9,441.87	0.00	0.00	0.00	
15,800.00	89.76	270.17	6,255.76	-113.29	-9,541.19	9,541.86	0.00	0.00	0.00	
15,900.00	89.76	270.17	6,256.18	-112.98	-9,641.18	9,641.85	0.00	0.00	0.00	
16,000.00	89.76	270.17	6,256.59	-112.68	-9,741.18	9,741.83	0.00	0.00	0.00	
16,097.37	89.76	270.17	6,257.00	-112.38	-9,838.55	9,839.19	0.00	0.00	0.00	
TD at 16097.37 - 03-62-4-5649C2 PBHL										

Design Targets										
Target Name	Dip Angle (°)	Dip Dir. (°)	TVD (ft)	+N/-S (ft)	+E/-W (ft)	Northing (usft)	Easting (usft)	Latitude	Longitude	
03-62-4-5649C2 LP - hit/miss target - Shape - Point	0.00	0.00	6,217.00	-141.65	-249.70	1,335,924.84	3,329,046.49	40° 14' 58.230 N	104° 19' 16.070 W	
03-62-4-5649C2 PBHL - plan hits target center - Point	0.00	0.00	6,257.00	-112.38	-9,838.55	1,335,826.54	3,319,458.12	40° 14' 58.500 N	104° 21' 19.740 W	

Plan Annotations					
Measured Depth (ft)	Vertical Depth (ft)	Local Coordinates			
		+N/-S (ft)	+E/-W (ft)	Comment	
800.00	800.00	0.00	0.00	Start Build 2.00	
1,300.10	1,297.57	-23.31	36.78	Start 1037.64 hold at 1300.10 MD	
2,337.74	2,319.44	-119.79	188.99	Start Drop -2.00	
2,837.84	2,817.00	-143.10	225.77	Start 2922.54 hold at 2837.84 MD	
5,760.38	5,739.54	-143.10	225.77	Start DLS 12.00 TFO 270.17	
6,508.39	6,217.00	-141.65	-249.70	Start 9588.97 hold at 6508.39 MD	
16,097.37	6,257.00	-112.38	-9,838.55	TD at 16097.37	