

PROJECT DETAILS: Weld County, CO NAD 83

Geodetic System: US State Plane 1983
Datum: North American Datum 1983
Ellipsoid: GRS 1980
Zone: Colorado Northern Zone
System Datum: Mean Sea Level
Local North: True

Project: Weld County, CO NAD 83
Site: Anschutz Equus Farms 3-62-4_5 NENE Pad
Well: Anschutz Equus Farms 03-62-04-0801C2
Wellbore: OH
Design: Plan #1



Azinuths to True North
Magnetic North: 8.22°

Magnetic Field
Strength: 52547.3nT
Dip Angle: 66.92°
Date: 2/12/2016
Model: BGGM2015

SECTION DETAILS

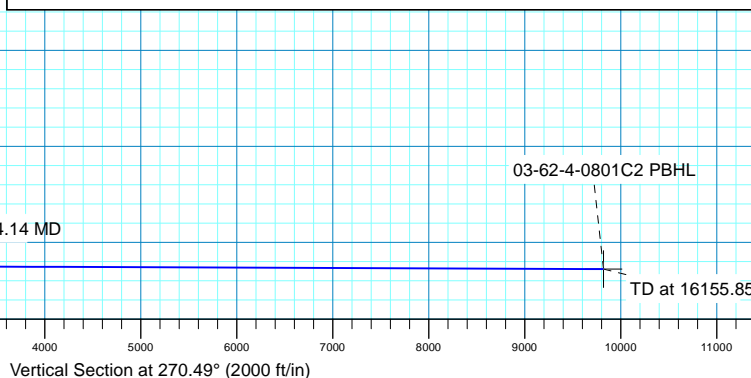
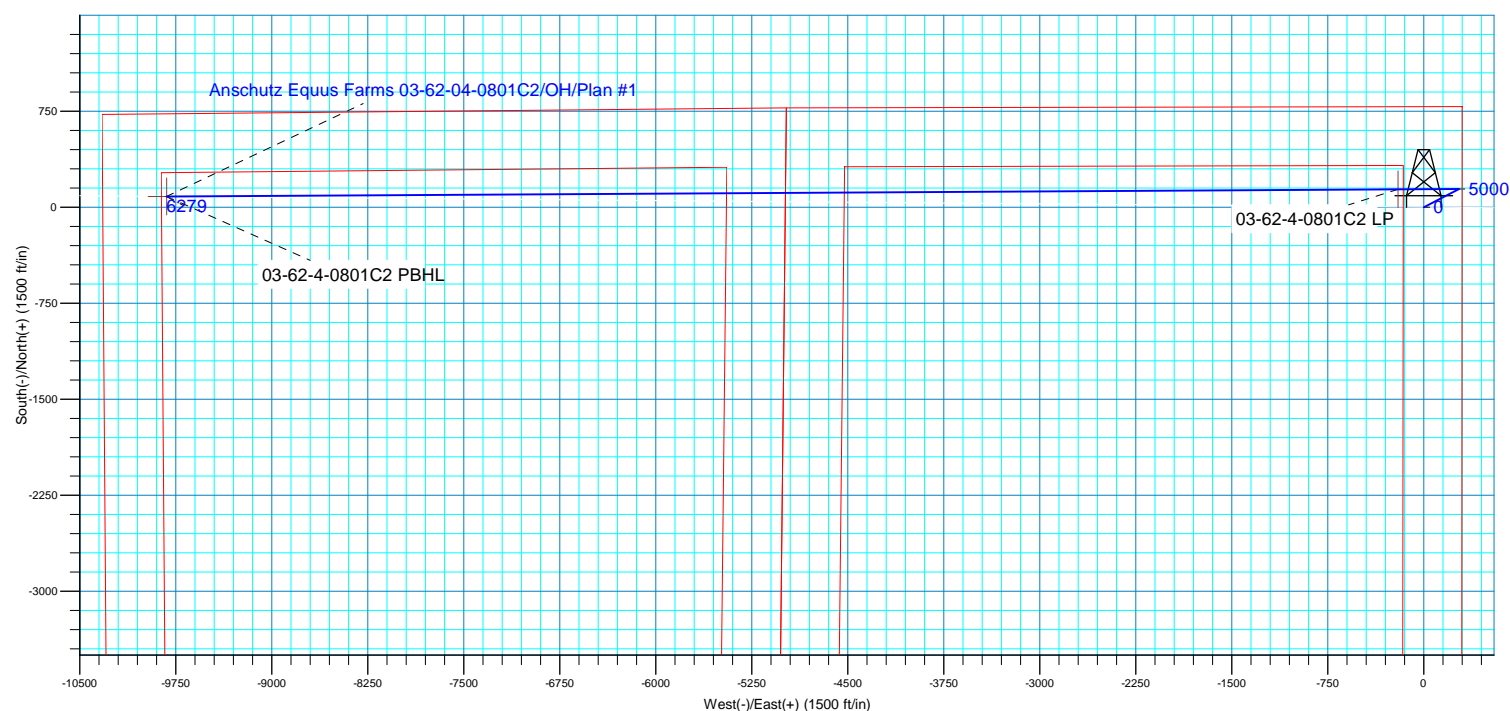
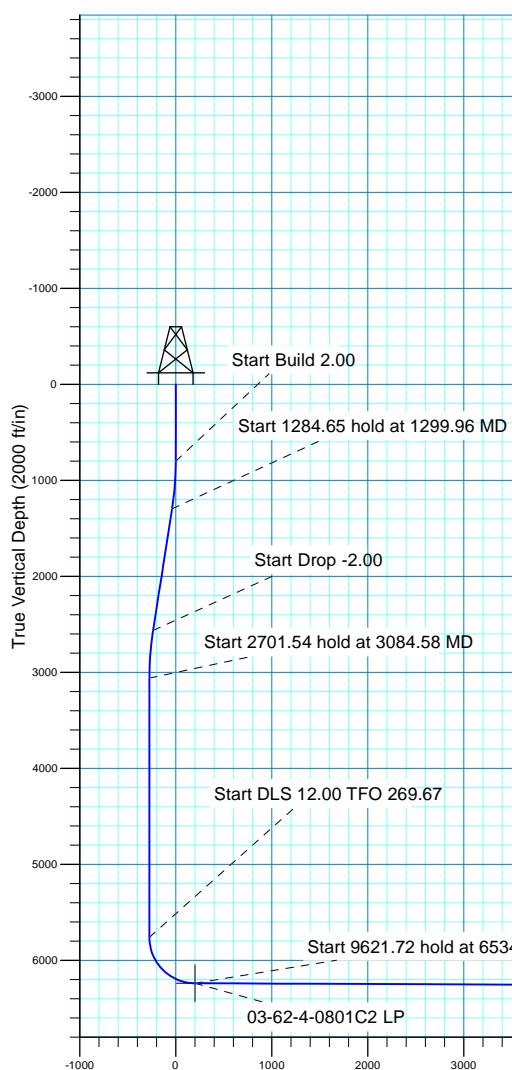
MD	Inc	Azi	TVD	+N/-S	+E/-W	Dleg	TFace	VSect
0.00	0.00	0.00	0.00	0.00	0.00	0.00	0.00	0.00
800.00	0.00	0.00	800.00	0.00	0.00	0.00	0.00	0.00
1299.96	10.00	62.66	1297.43	19.98	38.66	2.00	62.66	-38.48
2584.62	10.00	62.66	2562.57	122.43	236.80	0.00	0.00	-235.75
3084.58	0.00	0.00	3060.00	142.41	275.46	2.00	180.00	-274.23
5786.12	0.00	0.00	5761.54	142.41	275.46	0.00	0.00	-274.23
6534.14	89.76	269.67	6239.00	139.65	-200.01	12.00	269.67	201.20
16155.85	89.76	269.67	6279.00	83.88	-9821.48	0.00	0.00	9821.84

Plan: Plan #1 (Anschutz Equus Farms 03-62-04-0801C2/OH)

Created By: rscott Date: 19:33, February 15 2016

WELL DETAILS: Anschutz Equus Farms 03-62-04-0801C2

GL 4613 @ 4613.00ft (Original Well Elev) 4613.00
+N/-S +E/-W Northing Easting Latitude Longitude
0.00 0.00 1339716.79 3329199.20 40° 15' 35.680 N 104° 19' 13.450 W





Bill Barrett Corp.

Weld County, CO NAD 83

Anschutz Equus Farms 3-62-4_5 NENE Pad

Anschutz Equus Farms 03-62-04-0801C2

OH

Plan: Plan #1

Standard Planning Report

15 February, 2016



Database:	Casper District	Local Co-ordinate Reference:	Well Anschutz Equus Farms 03-62-04-0801C2
Company:	Bill Barrett Corp.	TVD Reference:	GL 4613 @ 4613.00ft (Original Well Elev)
Project:	Weld County, CO NAD 83	MD Reference:	GL 4613 @ 4613.00ft (Original Well Elev)
Site:	Anschutz Equus Farms 3-62-4_5 NENE Pad	North Reference:	True
Well:	Anschutz Equus Farms 03-62-04-0801C2	Survey Calculation Method:	Minimum Curvature
Wellbore:	OH		
Design:	Plan #1		

Project	Weld County, CO NAD 83		
Map System:	US State Plane 1983	System Datum:	Mean Sea Level
Geo Datum:	North American Datum 1983		
Map Zone:	Colorado Northern Zone		

Site	Anschutz Equus Farms 3-62-4_5 NENE Pad, SECTION 4, T3N, R62W, 6th P.M.			
Site Position:		Northing:	1,339,656.09 usft	Latitude: 40° 15' 35.080 N
From:	Lat/Long	Easting:	3,329,200.02 usft	Longitude: 104° 19' 13.450 W
Position Uncertainty:	0.00 ft	Slot Radius:	13.200 in	Grid Convergence: 0.76 °

Well	Anschutz Equus Farms 03-62-04-0801C2, 786 FNL 300 FEL			
Well Position	+N/-S	60.71 ft	Northing:	1,339,716.79 usft
	+E/-W	0.00 ft	Easting:	3,329,199.21 usft
Position Uncertainty		0.00 ft	Wellhead Elevation:	0.00 ft
			Ground Level:	4,613.00 ft

Wellbore	OH				
Magnetics	Model Name	Sample Date	Declination (°)	Dip Angle (°)	Field Strength (nT)
	BGGM2015	2/12/2016	8.22	66.92	52,547

Design	Plan #1			
Audit Notes:				
Version:	Phase:	PLAN	Tie On Depth:	0.00
Vertical Section:	Depth From (TVD) (ft)	+N/-S (ft)	+E/-W (ft)	Direction (°)
	0.00	0.00	0.00	270.49

Plan Sections										
Measured Depth (ft)	Inclination (°)	Azimuth (°)	Vertical Depth (ft)	+N/-S (ft)	+E/-W (ft)	Dogleg Rate (°/100ft)	Build Rate (°/100ft)	Turn Rate (°/100ft)	TFO (°)	Target
0.00	0.00	0.00	0.00	0.00	0.00	0.00	0.00	0.00	0.00	
800.00	0.00	0.00	800.00	0.00	0.00	0.00	0.00	0.00	0.00	
1,299.96	10.00	62.66	1,297.43	19.98	38.66	2.00	2.00	0.00	62.66	
2,584.62	10.00	62.66	2,562.57	122.43	236.80	0.00	0.00	0.00	0.00	
3,084.58	0.00	0.00	3,060.00	142.41	275.46	2.00	-2.00	0.00	180.00	
5,786.12	0.00	0.00	5,761.54	142.41	275.46	0.00	0.00	0.00	0.00	
6,534.14	89.76	269.67	6,239.00	139.65	-200.01	12.00	12.00	-12.08	269.67	
16,155.85	89.76	269.67	6,279.00	83.88	-9,821.48	0.00	0.00	0.00	0.00	03-62-4-0801C2 PBH

Database:	Casper District	Local Co-ordinate Reference:	Well Anschutz Equus Farms 03-62-04-0801C2
Company:	Bill Barrett Corp.	TVD Reference:	GL 4613 @ 4613.00ft (Original Well Elev)
Project:	Weld County, CO NAD 83	MD Reference:	GL 4613 @ 4613.00ft (Original Well Elev)
Site:	Anschutz Equus Farms 3-62-4_5 NENE Pad	North Reference:	True
Well:	Anschutz Equus Farms 03-62-04-0801C2	Survey Calculation Method:	Minimum Curvature
Wellbore:	OH		
Design:	Plan #1		

Planned Survey										
Measured Depth (ft)	Inclination (°)	Azimuth (°)	Vertical Depth (ft)	+N/-S (ft)	+E/-W (ft)	Vertical Section (ft)	Dogleg Rate (°/100ft)	Build Rate (°/100ft)	Turn Rate (°/100ft)	
0.00	0.00	0.00	0.00	0.00	0.00	0.00	0.00	0.00	0.00	
100.00	0.00	0.00	100.00	0.00	0.00	0.00	0.00	0.00	0.00	
200.00	0.00	0.00	200.00	0.00	0.00	0.00	0.00	0.00	0.00	
300.00	0.00	0.00	300.00	0.00	0.00	0.00	0.00	0.00	0.00	
400.00	0.00	0.00	400.00	0.00	0.00	0.00	0.00	0.00	0.00	
500.00	0.00	0.00	500.00	0.00	0.00	0.00	0.00	0.00	0.00	
600.00	0.00	0.00	600.00	0.00	0.00	0.00	0.00	0.00	0.00	
700.00	0.00	0.00	700.00	0.00	0.00	0.00	0.00	0.00	0.00	
800.00	0.00	0.00	800.00	0.00	0.00	0.00	0.00	0.00	0.00	
Start Build 2.00										
900.00	2.00	62.66	899.98	0.80	1.55	-1.54	2.00	2.00	0.00	
1,000.00	4.00	62.66	999.84	3.20	6.20	-6.17	2.00	2.00	0.00	
1,100.00	6.00	62.66	1,099.45	7.21	13.94	-13.88	2.00	2.00	0.00	
1,200.00	8.00	62.66	1,198.70	12.80	24.77	-24.66	2.00	2.00	0.00	
1,299.96	10.00	62.66	1,297.43	19.98	38.66	-38.48	2.00	2.00	0.00	
Start 1284.65 hold at 1299.96 MD										
1,300.00	10.00	62.66	1,297.47	19.99	38.66	-38.49	0.00	0.00	0.00	
1,400.00	10.00	62.66	1,395.95	27.96	54.09	-53.84	0.00	0.00	0.00	
1,500.00	10.00	62.66	1,494.43	35.94	69.51	-69.20	0.00	0.00	0.00	
1,600.00	10.00	62.66	1,592.91	43.91	84.93	-84.56	0.00	0.00	0.00	
1,700.00	10.00	62.66	1,691.39	51.88	100.36	-99.91	0.00	0.00	0.00	
1,800.00	10.00	62.66	1,789.87	59.86	115.78	-115.27	0.00	0.00	0.00	
1,900.00	10.00	62.66	1,888.35	67.83	131.21	-130.62	0.00	0.00	0.00	
2,000.00	10.00	62.66	1,986.83	75.81	146.63	-145.98	0.00	0.00	0.00	
2,100.00	10.00	62.66	2,085.31	83.78	162.06	-161.33	0.00	0.00	0.00	
2,200.00	10.00	62.66	2,183.79	91.76	177.48	-176.69	0.00	0.00	0.00	
2,300.00	10.00	62.66	2,282.28	99.73	192.90	-192.05	0.00	0.00	0.00	
2,400.00	10.00	62.66	2,380.76	107.70	208.33	-207.40	0.00	0.00	0.00	
2,500.00	10.00	62.66	2,479.24	115.68	223.75	-222.76	0.00	0.00	0.00	
2,584.62	10.00	62.66	2,562.57	122.43	236.80	-235.75	0.00	0.00	0.00	
Start Drop -2.00										
2,600.00	9.69	62.66	2,577.73	123.63	239.14	-238.08	2.00	-2.00	0.00	
2,700.00	7.69	62.66	2,676.57	130.57	252.56	-251.44	2.00	-2.00	0.00	
2,800.00	5.69	62.66	2,775.89	135.92	262.91	-261.74	2.00	-2.00	0.00	
2,900.00	3.69	62.66	2,875.55	139.68	270.18	-268.98	2.00	-2.00	0.00	
3,000.00	1.69	62.66	2,975.43	141.84	274.35	-273.13	2.00	-2.00	0.00	
3,084.58	0.00	0.00	3,060.00	142.41	275.46	-274.23	2.00	-2.00	0.00	
Start 2701.54 hold at 3084.58 MD										
3,100.00	0.00	0.00	3,075.42	142.41	275.46	-274.23	0.00	0.00	0.00	
3,200.00	0.00	0.00	3,175.42	142.41	275.46	-274.23	0.00	0.00	0.00	
3,300.00	0.00	0.00	3,275.42	142.41	275.46	-274.23	0.00	0.00	0.00	
3,400.00	0.00	0.00	3,375.42	142.41	275.46	-274.23	0.00	0.00	0.00	
3,500.00	0.00	0.00	3,475.42	142.41	275.46	-274.23	0.00	0.00	0.00	
3,600.00	0.00	0.00	3,575.42	142.41	275.46	-274.23	0.00	0.00	0.00	
3,700.00	0.00	0.00	3,675.42	142.41	275.46	-274.23	0.00	0.00	0.00	
3,800.00	0.00	0.00	3,775.42	142.41	275.46	-274.23	0.00	0.00	0.00	
3,900.00	0.00	0.00	3,875.42	142.41	275.46	-274.23	0.00	0.00	0.00	
4,000.00	0.00	0.00	3,975.42	142.41	275.46	-274.23	0.00	0.00	0.00	
4,100.00	0.00	0.00	4,075.42	142.41	275.46	-274.23	0.00	0.00	0.00	
4,200.00	0.00	0.00	4,175.42	142.41	275.46	-274.23	0.00	0.00	0.00	
4,300.00	0.00	0.00	4,275.42	142.41	275.46	-274.23	0.00	0.00	0.00	
4,400.00	0.00	0.00	4,375.42	142.41	275.46	-274.23	0.00	0.00	0.00	
4,500.00	0.00	0.00	4,475.42	142.41	275.46	-274.23	0.00	0.00	0.00	

Database:	Casper District	Local Co-ordinate Reference:	Well Anschutz Equus Farms 03-62-04-0801C2
Company:	Bill Barrett Corp.	TVD Reference:	GL 4613 @ 4613.00ft (Original Well Elev)
Project:	Weld County, CO NAD 83	MD Reference:	GL 4613 @ 4613.00ft (Original Well Elev)
Site:	Anschutz Equus Farms 3-62-4_5 NENE Pad	North Reference:	True
Well:	Anschutz Equus Farms 03-62-04-0801C2	Survey Calculation Method:	Minimum Curvature
Wellbore:	OH		
Design:	Plan #1		

Planned Survey									
Measured Depth (ft)	Inclination (°)	Azimuth (°)	Vertical Depth (ft)	+N/-S (ft)	+E/-W (ft)	Vertical Section (ft)	Dogleg Rate (°/100ft)	Build Rate (°/100ft)	Turn Rate (°/100ft)
4,600.00	0.00	0.00	4,575.42	142.41	275.46	-274.23	0.00	0.00	0.00
4,700.00	0.00	0.00	4,675.42	142.41	275.46	-274.23	0.00	0.00	0.00
4,800.00	0.00	0.00	4,775.42	142.41	275.46	-274.23	0.00	0.00	0.00
4,900.00	0.00	0.00	4,875.42	142.41	275.46	-274.23	0.00	0.00	0.00
5,000.00	0.00	0.00	4,975.42	142.41	275.46	-274.23	0.00	0.00	0.00
5,100.00	0.00	0.00	5,075.42	142.41	275.46	-274.23	0.00	0.00	0.00
5,200.00	0.00	0.00	5,175.42	142.41	275.46	-274.23	0.00	0.00	0.00
5,300.00	0.00	0.00	5,275.42	142.41	275.46	-274.23	0.00	0.00	0.00
5,400.00	0.00	0.00	5,375.42	142.41	275.46	-274.23	0.00	0.00	0.00
5,500.00	0.00	0.00	5,475.42	142.41	275.46	-274.23	0.00	0.00	0.00
5,600.00	0.00	0.00	5,575.42	142.41	275.46	-274.23	0.00	0.00	0.00
5,700.00	0.00	0.00	5,675.42	142.41	275.46	-274.23	0.00	0.00	0.00
5,786.12	0.00	0.00	5,761.54	142.41	275.46	-274.23	0.00	0.00	0.00
Start DLS 12.00 TFO 269.67									
5,800.00	1.67	269.67	5,775.42	142.41	275.26	-274.03	12.00	12.00	0.00
5,900.00	13.67	269.67	5,874.34	142.33	261.94	-260.72	12.00	12.00	0.00
6,000.00	25.67	269.67	5,968.34	142.14	228.35	-227.13	12.00	12.00	0.00
6,100.00	37.67	269.67	6,053.29	141.83	175.95	-174.74	12.00	12.00	0.00
6,200.00	49.67	269.67	6,125.50	141.43	107.04	-105.83	12.00	12.00	0.00
6,300.00	61.67	269.67	6,181.80	140.96	24.61	-23.41	12.00	12.00	0.00
6,400.00	73.67	269.67	6,219.73	140.42	-67.71	68.91	12.00	12.00	0.00
6,500.00	85.67	269.67	6,237.64	139.85	-165.91	167.10	12.00	12.00	0.00
6,534.14	89.76	269.67	6,239.00	139.65	-200.01	201.20	12.00	12.00	0.00
Start 9621.72 hold at 6534.14 MD - 03-62-4-0801C2 LP									
6,600.00	89.76	269.67	6,239.27	139.27	-265.87	267.05	0.00	0.00	0.00
6,700.00	89.76	269.67	6,239.69	138.69	-365.87	367.04	0.00	0.00	0.00
6,800.00	89.76	269.67	6,240.11	138.11	-465.87	467.03	0.00	0.00	0.00
6,900.00	89.76	269.67	6,240.52	137.53	-565.87	567.02	0.00	0.00	0.00
7,000.00	89.76	269.67	6,240.94	136.95	-665.86	667.01	0.00	0.00	0.00
7,100.00	89.76	269.67	6,241.35	136.37	-765.86	767.00	0.00	0.00	0.00
7,200.00	89.76	269.67	6,241.77	135.79	-865.86	866.99	0.00	0.00	0.00
7,300.00	89.76	269.67	6,242.18	135.21	-965.86	966.97	0.00	0.00	0.00
7,400.00	89.76	269.67	6,242.60	134.63	-1,065.85	1,066.96	0.00	0.00	0.00
7,500.00	89.76	269.67	6,243.02	134.06	-1,165.85	1,166.95	0.00	0.00	0.00
7,600.00	89.76	269.67	6,243.43	133.48	-1,265.85	1,266.94	0.00	0.00	0.00
7,700.00	89.76	269.67	6,243.85	132.90	-1,365.84	1,366.93	0.00	0.00	0.00
7,800.00	89.76	269.67	6,244.26	132.32	-1,465.84	1,466.92	0.00	0.00	0.00
7,900.00	89.76	269.67	6,244.68	131.74	-1,565.84	1,566.91	0.00	0.00	0.00
8,000.00	89.76	269.67	6,245.09	131.16	-1,665.84	1,666.90	0.00	0.00	0.00
8,100.00	89.76	269.67	6,245.51	130.58	-1,765.83	1,766.89	0.00	0.00	0.00
8,200.00	89.76	269.67	6,245.93	130.00	-1,865.83	1,866.87	0.00	0.00	0.00
8,300.00	89.76	269.67	6,246.34	129.42	-1,965.83	1,966.86	0.00	0.00	0.00
8,400.00	89.76	269.67	6,246.76	128.84	-2,065.83	2,066.85	0.00	0.00	0.00
8,500.00	89.76	269.67	6,247.17	128.26	-2,165.82	2,166.84	0.00	0.00	0.00
8,600.00	89.76	269.67	6,247.59	127.68	-2,265.82	2,266.83	0.00	0.00	0.00
8,700.00	89.76	269.67	6,248.00	127.10	-2,365.82	2,366.82	0.00	0.00	0.00
8,800.00	89.76	269.67	6,248.42	126.52	-2,465.82	2,466.81	0.00	0.00	0.00
8,900.00	89.76	269.67	6,248.84	125.94	-2,565.81	2,566.80	0.00	0.00	0.00
9,000.00	89.76	269.67	6,249.25	125.36	-2,665.81	2,666.79	0.00	0.00	0.00
9,100.00	89.76	269.67	6,249.67	124.78	-2,765.81	2,766.77	0.00	0.00	0.00
9,200.00	89.76	269.67	6,250.08	124.20	-2,865.81	2,866.76	0.00	0.00	0.00
9,300.00	89.76	269.67	6,250.50	123.62	-2,965.80	2,966.75	0.00	0.00	0.00
9,400.00	89.76	269.67	6,250.91	123.04	-3,065.80	3,066.74	0.00	0.00	0.00

Database:	Casper District	Local Co-ordinate Reference:	Well Anschutz Equus Farms 03-62-04-0801C2
Company:	Bill Barrett Corp.	TVD Reference:	GL 4613 @ 4613.00ft (Original Well Elev)
Project:	Weld County, CO NAD 83	MD Reference:	GL 4613 @ 4613.00ft (Original Well Elev)
Site:	Anschutz Equus Farms 3-62-4_5 NENE Pad	North Reference:	True
Well:	Anschutz Equus Farms 03-62-04-0801C2	Survey Calculation Method:	Minimum Curvature
Wellbore:	OH		
Design:	Plan #1		

Planned Survey									
Measured Depth (ft)	Inclination (°)	Azimuth (°)	Vertical Depth (ft)	+N/-S (ft)	+E/-W (ft)	Vertical Section (ft)	Dogleg Rate (°/100ft)	Build Rate (°/100ft)	Turn Rate (°/100ft)
9,500.00	89.76	269.67	6,251.33	122.46	-3,165.80	3,166.73	0.00	0.00	0.00
9,600.00	89.76	269.67	6,251.75	121.88	-3,265.80	3,266.72	0.00	0.00	0.00
9,700.00	89.76	269.67	6,252.16	121.30	-3,365.79	3,366.71	0.00	0.00	0.00
9,800.00	89.76	269.67	6,252.58	120.72	-3,465.79	3,466.70	0.00	0.00	0.00
9,900.00	89.76	269.67	6,252.99	120.14	-3,565.79	3,566.68	0.00	0.00	0.00
10,000.00	89.76	269.67	6,253.41	119.56	-3,665.79	3,666.67	0.00	0.00	0.00
10,100.00	89.76	269.67	6,253.82	118.98	-3,765.78	3,766.66	0.00	0.00	0.00
10,200.00	89.76	269.67	6,254.24	118.40	-3,865.78	3,866.65	0.00	0.00	0.00
10,300.00	89.76	269.67	6,254.66	117.82	-3,965.78	3,966.64	0.00	0.00	0.00
10,400.00	89.76	269.67	6,255.07	117.25	-4,065.78	4,066.63	0.00	0.00	0.00
10,500.00	89.76	269.67	6,255.49	116.67	-4,165.77	4,166.62	0.00	0.00	0.00
10,600.00	89.76	269.67	6,255.90	116.09	-4,265.77	4,266.61	0.00	0.00	0.00
10,700.00	89.76	269.67	6,256.32	115.51	-4,365.77	4,366.60	0.00	0.00	0.00
10,800.00	89.76	269.67	6,256.73	114.93	-4,465.77	4,466.58	0.00	0.00	0.00
10,900.00	89.76	269.67	6,257.15	114.35	-4,565.76	4,566.57	0.00	0.00	0.00
11,000.00	89.76	269.67	6,257.57	113.77	-4,665.76	4,666.56	0.00	0.00	0.00
11,100.00	89.76	269.67	6,257.98	113.19	-4,765.76	4,766.55	0.00	0.00	0.00
11,200.00	89.76	269.67	6,258.40	112.61	-4,865.76	4,866.54	0.00	0.00	0.00
11,300.00	89.76	269.67	6,258.81	112.03	-4,965.75	4,966.53	0.00	0.00	0.00
11,400.00	89.76	269.67	6,259.23	111.45	-5,065.75	5,066.52	0.00	0.00	0.00
11,500.00	89.76	269.67	6,259.64	110.87	-5,165.75	5,166.51	0.00	0.00	0.00
11,600.00	89.76	269.67	6,260.06	110.29	-5,265.75	5,266.50	0.00	0.00	0.00
11,700.00	89.76	269.67	6,260.48	109.71	-5,365.74	5,366.48	0.00	0.00	0.00
11,800.00	89.76	269.67	6,260.89	109.13	-5,465.74	5,466.47	0.00	0.00	0.00
11,900.00	89.76	269.67	6,261.31	108.55	-5,565.74	5,566.46	0.00	0.00	0.00
12,000.00	89.76	269.67	6,261.72	107.97	-5,665.74	5,666.45	0.00	0.00	0.00
12,100.00	89.76	269.67	6,262.14	107.39	-5,765.73	5,766.44	0.00	0.00	0.00
12,200.00	89.76	269.67	6,262.55	106.81	-5,865.73	5,866.43	0.00	0.00	0.00
12,300.00	89.76	269.67	6,262.97	106.23	-5,965.73	5,966.42	0.00	0.00	0.00
12,400.00	89.76	269.67	6,263.39	105.65	-6,065.73	6,066.41	0.00	0.00	0.00
12,500.00	89.76	269.67	6,263.80	105.07	-6,165.72	6,166.40	0.00	0.00	0.00
12,600.00	89.76	269.67	6,264.22	104.49	-6,265.72	6,266.38	0.00	0.00	0.00
12,700.00	89.76	269.67	6,264.63	103.91	-6,365.72	6,366.37	0.00	0.00	0.00
12,800.00	89.76	269.67	6,265.05	103.33	-6,465.72	6,466.36	0.00	0.00	0.00
12,900.00	89.76	269.67	6,265.46	102.75	-6,565.71	6,566.35	0.00	0.00	0.00
13,000.00	89.76	269.67	6,265.88	102.17	-6,665.71	6,666.34	0.00	0.00	0.00
13,100.00	89.76	269.67	6,266.30	101.59	-6,765.71	6,766.33	0.00	0.00	0.00
13,200.00	89.76	269.67	6,266.71	101.02	-6,865.71	6,866.32	0.00	0.00	0.00
13,300.00	89.76	269.67	6,267.13	100.44	-6,965.70	6,966.31	0.00	0.00	0.00
13,400.00	89.76	269.67	6,267.54	99.86	-7,065.70	7,066.30	0.00	0.00	0.00
13,500.00	89.76	269.67	6,267.96	99.28	-7,165.70	7,166.28	0.00	0.00	0.00
13,600.00	89.76	269.67	6,268.37	98.70	-7,265.70	7,266.27	0.00	0.00	0.00
13,700.00	89.76	269.67	6,268.79	98.12	-7,365.69	7,366.26	0.00	0.00	0.00
13,800.00	89.76	269.67	6,269.21	97.54	-7,465.69	7,466.25	0.00	0.00	0.00
13,900.00	89.76	269.67	6,269.62	96.96	-7,565.69	7,566.24	0.00	0.00	0.00
14,000.00	89.76	269.67	6,270.04	96.38	-7,665.68	7,666.23	0.00	0.00	0.00
14,100.00	89.76	269.67	6,270.45	95.80	-7,765.68	7,766.22	0.00	0.00	0.00
14,200.00	89.76	269.67	6,270.87	95.22	-7,865.68	7,866.21	0.00	0.00	0.00
14,300.00	89.76	269.67	6,271.29	94.64	-7,965.68	7,966.19	0.00	0.00	0.00
14,400.00	89.76	269.67	6,271.70	94.06	-8,065.67	8,066.18	0.00	0.00	0.00
14,500.00	89.76	269.67	6,272.12	93.48	-8,165.67	8,166.17	0.00	0.00	0.00
14,600.00	89.76	269.67	6,272.53	92.90	-8,265.67	8,266.16	0.00	0.00	0.00
14,700.00	89.76	269.67	6,272.95	92.32	-8,365.67	8,366.15	0.00	0.00	0.00

Database:	Casper District	Local Co-ordinate Reference:	Well Anschutz Equus Farms 03-62-04-0801C2
Company:	Bill Barrett Corp.	TVD Reference:	GL 4613 @ 4613.00ft (Original Well Elev)
Project:	Weld County, CO NAD 83	MD Reference:	GL 4613 @ 4613.00ft (Original Well Elev)
Site:	Anschutz Equus Farms 3-62-4_5 NENE Pad	North Reference:	True
Well:	Anschutz Equus Farms 03-62-04-0801C2	Survey Calculation Method:	Minimum Curvature
Wellbore:	OH		
Design:	Plan #1		

Planned Survey										
Measured Depth (ft)	Inclination (°)	Azimuth (°)	Vertical Depth (ft)	+N/-S (ft)	+E/-W (ft)	Vertical Section (ft)	Dogleg Rate (°/100ft)	Build Rate (°/100ft)	Turn Rate (°/100ft)	
14,800.00	89.76	269.67	6,273.36	91.74	-8,465.66	8,466.14	0.00	0.00	0.00	
14,900.00	89.76	269.67	6,273.78	91.16	-8,565.66	8,566.13	0.00	0.00	0.00	
15,000.00	89.76	269.67	6,274.20	90.58	-8,665.66	8,666.12	0.00	0.00	0.00	
15,100.00	89.76	269.67	6,274.61	90.00	-8,765.66	8,766.11	0.00	0.00	0.00	
15,200.00	89.76	269.67	6,275.03	89.42	-8,865.65	8,866.09	0.00	0.00	0.00	
15,300.00	89.76	269.67	6,275.44	88.84	-8,965.65	8,966.08	0.00	0.00	0.00	
15,400.00	89.76	269.67	6,275.86	88.26	-9,065.65	9,066.07	0.00	0.00	0.00	
15,500.00	89.76	269.67	6,276.27	87.68	-9,165.65	9,166.06	0.00	0.00	0.00	
15,600.00	89.76	269.67	6,276.69	87.10	-9,265.64	9,266.05	0.00	0.00	0.00	
15,700.00	89.76	269.67	6,277.11	86.52	-9,365.64	9,366.04	0.00	0.00	0.00	
15,800.00	89.76	269.67	6,277.52	85.94	-9,465.64	9,466.03	0.00	0.00	0.00	
15,900.00	89.76	269.67	6,277.94	85.36	-9,565.64	9,566.02	0.00	0.00	0.00	
16,000.00	89.76	269.67	6,278.35	84.78	-9,665.63	9,666.01	0.00	0.00	0.00	
16,100.00	89.76	269.67	6,278.77	84.21	-9,765.63	9,765.99	0.00	0.00	0.00	
16,155.85	89.76	269.67	6,279.00	83.88	-9,821.48	9,821.84	0.00	0.00	0.00	
TD at 16155.85 - 03-62-4-0801C2 PBHL										

Design Targets										
Target Name	Dip Angle (°)	Dip Dir. (°)	TVD (ft)	+N/-S (ft)	+E/-W (ft)	Northing (usft)	Easting (usft)	Latitude	Longitude	
03-62-4-0801C2 LP - hit/miss target - Shape - Point	0.00	0.00	6,239.00	139.65	-200.01	1,339,853.77	3,328,997.36	40° 15' 37.060 N	104° 19' 16.030 W	
03-62-4-0801C2 PBHL - plan hits target center - Point	0.00	0.00	6,279.00	83.88	-9,821.48	1,339,670.02	3,319,377.50	40° 15' 36.490 N	104° 21' 20.140 W	

Plan Annotations					
Measured Depth (ft)	Vertical Depth (ft)	Local Coordinates			
		+N/-S (ft)	+E/-W (ft)	Comment	
800.00	800.00	0.00	0.00	Start Build 2.00	
1,299.96	1,297.43	19.98	38.66	Start 1284.65 hold at 1299.96 MD	
2,584.62	2,562.57	122.43	236.80	Start Drop -2.00	
3,084.58	3,060.00	142.41	275.46	Start 2701.54 hold at 3084.58 MD	
5,786.12	5,761.54	142.41	275.46	Start DLS 12.00 TFO 269.67	
6,534.14	6,239.00	139.65	-200.01	Start 9621.72 hold at 6534.14 MD	
16,155.85	6,279.00	83.88	-9,821.48	TD at 16155.85	