

PROJECT DETAILS: Weld County, CO NAD 83

Geodetic System: US State Plane 1983
Datum: North American Datum 1983
Ellipsoid: GRS 1980
Zone: Colorado Northern Zone
System Datum: Mean Sea Level
Local North: True

Project: Weld County, CO NAD 83
Site: Anschutz Equus Farms 3-62-4_5 NENE Pad
Well: Anschutz Equus Farms 03-62-04-0916D2
Wellbore: OH
Design: Plan #1



Azimuths to True North
Magnetic North: 8.22°

Magnetic Field
Strength: 52547.3snT
Dip Angle: 66.92°
Date: 2/12/2016
Model: BGGM2015

SECTION DETAILS

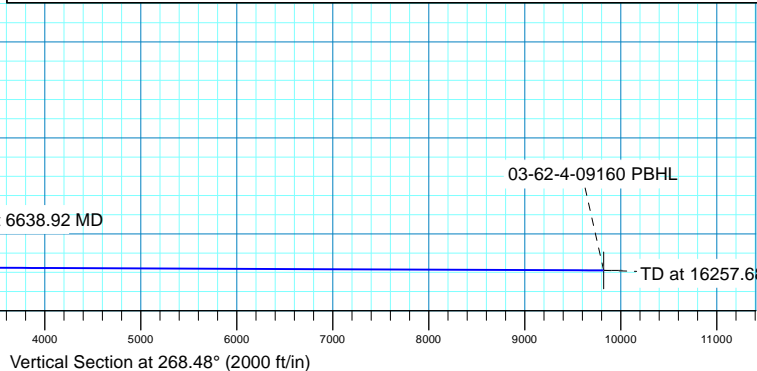
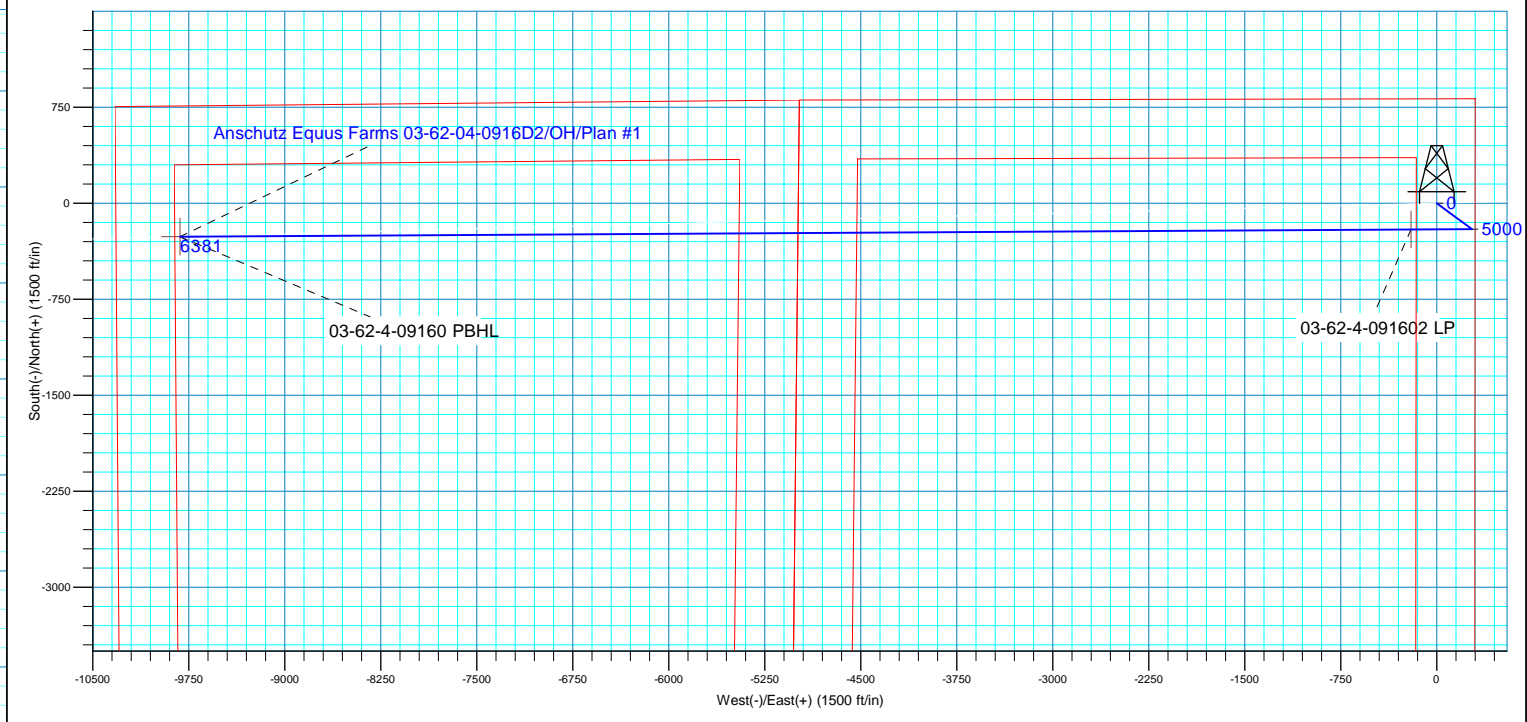
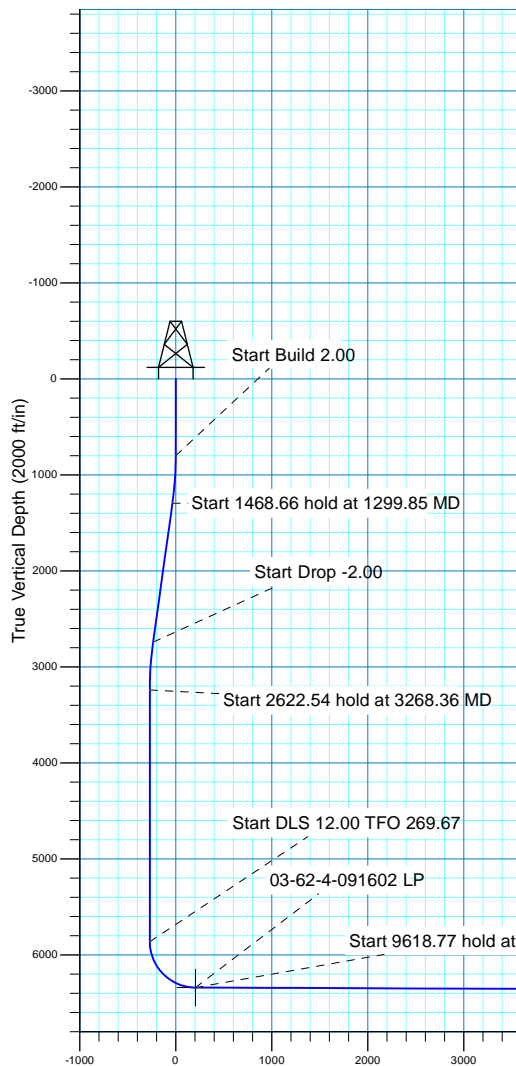
Plan: Plan #1 (Anschutz Equus Farms 03-62-04-0916D2/OH)

Created By: rscott Date: 19:44, February 15 2016

WELL DETAILS: Anschutz Equus Farms 03-62-04-0916D2

GL 4613 @ 4613.00ft (Original Well Elev) 4613.00
+N/-S +E/-W Northing Easting Latitude Longitude
0.00 0.00 1339686.43 3329199.61 40° 15' 35.380 N 104° 19' 13.450 W

MD	Inc	Azi	TVD	+N/-S	+E/-W	Dleg	TFace	VSect
0.00	0.00	0.00	0.00	0.00	0.00	0.00	0.00	0.00
800.00	0.00	0.00	800.00	0.00	0.00	0.00	0.00	0.00
1299.85	10.00	126.34	1297.32	-25.77	35.04	2.00	126.34	-34.34
2768.51	10.00	126.34	2743.68	-176.84	240.42	0.00	0.00	-235.63
3268.36	0.00	0.00	3241.00	-202.61	275.46	2.00	180.00	-269.98
5890.90	0.00	0.00	5863.54	-202.61	275.46	0.00	0.00	-269.98
6638.92	89.76	269.67	6341.00	-205.37	-200.01	12.00	269.67	205.40
16257.68	89.76	269.67	6381.00	-261.14	-9818.53	0.00	0.00	9822.00





Bill Barrett Corp.

Weld County, CO NAD 83

Anschutz Equus Farms 3-62-4_5 NENE Pad

Anschutz Equus Farms 03-62-04-0916D2

OH

Plan: Plan #1

Standard Planning Report

15 February, 2016



Database:	Casper District	Local Co-ordinate Reference:	Well Anschutz Equus Farms 03-62-04-0916D2
Company:	Bill Barrett Corp.	TVD Reference:	GL 4613 @ 4613.00ft (Original Well Elev)
Project:	Weld County, CO NAD 83	MD Reference:	GL 4613 @ 4613.00ft (Original Well Elev)
Site:	Anschutz Equus Farms 3-62-4_5 NENE Pad	North Reference:	True
Well:	Anschutz Equus Farms 03-62-04-0916D2	Survey Calculation Method:	Minimum Curvature
Wellbore:	OH		
Design:	Plan #1		

Project	Weld County, CO NAD 83		
Map System:	US State Plane 1983	System Datum:	Mean Sea Level
Geo Datum:	North American Datum 1983		
Map Zone:	Colorado Northern Zone		

Site	Anschutz Equus Farms 3-62-4_5 NENE Pad, SECTION 4, T3N, R62W, 6th P.M.			
Site Position:		Northing:	1,339,656.09 usft	Latitude: 40° 15' 35.080 N
From:	Lat/Long	Easting:	3,329,200.02 usft	Longitude: 104° 19' 13.450 W
Position Uncertainty:	0.00 ft	Slot Radius:	13.200 in	Grid Convergence: 0.76 °

Well	Anschutz Equus Farms 03-62-04-0916D2, 816 FNL 300 FEL			
Well Position	+N/-S	30.35 ft	Northing:	1,339,686.43 usft
	+E/-W	0.00 ft	Easting:	3,329,199.61 usft
Position Uncertainty		0.00 ft	Wellhead Elevation:	0.00 ft
			Ground Level:	4,613.00 ft

Wellbore	OH				
Magnetics	Model Name	Sample Date	Declination (°)	Dip Angle (°)	Field Strength (nT)
	BGGM2015	2/12/2016	8.22	66.92	52,547

Design	Plan #1			
Audit Notes:				
Version:	Phase:	PLAN	Tie On Depth:	0.00
Vertical Section:	Depth From (TVD) (ft)	+N/-S (ft)	+E/-W (ft)	Direction (°)
	0.00	0.00	0.00	268.48

Plan Sections										
Measured Depth (ft)	Inclination (°)	Azimuth (°)	Vertical Depth (ft)	+N/-S (ft)	+E/-W (ft)	Dogleg Rate (°/100ft)	Build Rate (°/100ft)	Turn Rate (°/100ft)	TFO (°)	Target
0.00	0.00	0.00	0.00	0.00	0.00	0.00	0.00	0.00	0.00	
800.00	0.00	0.00	800.00	0.00	0.00	0.00	0.00	0.00	0.00	
1,299.85	10.00	126.34	1,297.32	-25.77	35.04	2.00	2.00	0.00	126.34	
2,768.51	10.00	126.34	2,743.68	-176.84	240.42	0.00	0.00	0.00	0.00	
3,268.36	0.00	0.00	3,241.00	-202.61	275.46	2.00	-2.00	0.00	180.00	
5,890.90	0.00	0.00	5,863.54	-202.61	275.46	0.00	0.00	0.00	0.00	
6,638.92	89.76	269.67	6,341.00	-205.37	-200.01	12.00	12.00	-12.08	269.67	
16,257.68	89.76	269.67	6,381.00	-261.14	-9,818.53	0.00	0.00	0.00	0.00	03-62-4-09160 PBHL

Database:	Casper District	Local Co-ordinate Reference:	Well Anschutz Equus Farms 03-62-04-0916D2
Company:	Bill Barrett Corp.	TVD Reference:	GL 4613 @ 4613.00ft (Original Well Elev)
Project:	Weld County, CO NAD 83	MD Reference:	GL 4613 @ 4613.00ft (Original Well Elev)
Site:	Anschutz Equus Farms 3-62-4_5 NENE Pad	North Reference:	True
Well:	Anschutz Equus Farms 03-62-04-0916D2	Survey Calculation Method:	Minimum Curvature
Wellbore:	OH		
Design:	Plan #1		

Planned Survey									
Measured Depth (ft)	Inclination (°)	Azimuth (°)	Vertical Depth (ft)	+N/-S (ft)	+E/-W (ft)	Vertical Section (ft)	Dogleg Rate (°/100ft)	Build Rate (°/100ft)	Turn Rate (°/100ft)
0.00	0.00	0.00	0.00	0.00	0.00	0.00	0.00	0.00	0.00
100.00	0.00	0.00	100.00	0.00	0.00	0.00	0.00	0.00	0.00
200.00	0.00	0.00	200.00	0.00	0.00	0.00	0.00	0.00	0.00
300.00	0.00	0.00	300.00	0.00	0.00	0.00	0.00	0.00	0.00
400.00	0.00	0.00	400.00	0.00	0.00	0.00	0.00	0.00	0.00
500.00	0.00	0.00	500.00	0.00	0.00	0.00	0.00	0.00	0.00
600.00	0.00	0.00	600.00	0.00	0.00	0.00	0.00	0.00	0.00
700.00	0.00	0.00	700.00	0.00	0.00	0.00	0.00	0.00	0.00
800.00	0.00	0.00	800.00	0.00	0.00	0.00	0.00	0.00	0.00
Start Build 2.00									
900.00	2.00	126.34	899.98	-1.03	1.41	-1.38	2.00	2.00	0.00
1,000.00	4.00	126.34	999.84	-4.13	5.62	-5.51	2.00	2.00	0.00
1,100.00	6.00	126.34	1,099.45	-9.30	12.64	-12.39	2.00	2.00	0.00
1,200.00	8.00	126.34	1,198.70	-16.52	22.46	-22.01	2.00	2.00	0.00
1,299.85	10.00	126.34	1,297.32	-25.77	35.04	-34.34	2.00	2.00	0.00
Start 1468.66 hold at 1299.85 MD									
1,300.00	10.00	126.34	1,297.47	-25.79	35.06	-34.36	0.00	0.00	0.00
1,400.00	10.00	126.34	1,395.95	-36.07	49.04	-48.07	0.00	0.00	0.00
1,500.00	10.00	126.34	1,494.43	-46.36	63.03	-61.77	0.00	0.00	0.00
1,600.00	10.00	126.34	1,592.91	-56.65	77.01	-75.48	0.00	0.00	0.00
1,700.00	10.00	126.34	1,691.39	-66.93	91.00	-89.19	0.00	0.00	0.00
1,800.00	10.00	126.34	1,789.87	-77.22	104.98	-102.89	0.00	0.00	0.00
1,900.00	10.00	126.34	1,888.36	-87.50	118.97	-116.60	0.00	0.00	0.00
2,000.00	10.00	126.34	1,986.84	-97.79	132.95	-130.30	0.00	0.00	0.00
2,100.00	10.00	126.34	2,085.32	-108.07	146.93	-144.01	0.00	0.00	0.00
2,200.00	10.00	126.34	2,183.80	-118.36	160.92	-157.71	0.00	0.00	0.00
2,300.00	10.00	126.34	2,282.28	-128.65	174.90	-171.42	0.00	0.00	0.00
2,400.00	10.00	126.34	2,380.76	-138.93	188.89	-185.13	0.00	0.00	0.00
2,500.00	10.00	126.34	2,479.25	-149.22	202.87	-198.83	0.00	0.00	0.00
2,600.00	10.00	126.34	2,577.73	-159.50	216.86	-212.54	0.00	0.00	0.00
2,700.00	10.00	126.34	2,676.21	-169.79	230.84	-226.24	0.00	0.00	0.00
2,768.51	10.00	126.34	2,743.68	-176.84	240.42	-235.63	0.00	0.00	0.00
Start Drop -2.00									
2,800.00	9.37	126.34	2,774.72	-179.98	244.69	-239.82	2.00	-2.00	0.00
2,900.00	7.37	126.34	2,873.65	-188.60	256.41	-251.30	2.00	-2.00	0.00
3,000.00	5.37	126.34	2,973.03	-195.17	265.34	-260.06	2.00	-2.00	0.00
3,100.00	3.37	126.34	3,072.73	-199.68	271.48	-266.07	2.00	-2.00	0.00
3,200.00	1.37	126.34	3,172.64	-202.13	274.80	-269.33	2.00	-2.00	0.00
3,268.36	0.00	0.00	3,241.00	-202.61	275.46	-269.98	2.00	-2.00	0.00
Start 2622.54 hold at 3268.36 MD									
3,300.00	0.00	0.00	3,272.64	-202.61	275.46	-269.98	0.00	0.00	0.00
3,400.00	0.00	0.00	3,372.64	-202.61	275.46	-269.98	0.00	0.00	0.00
3,500.00	0.00	0.00	3,472.64	-202.61	275.46	-269.98	0.00	0.00	0.00
3,600.00	0.00	0.00	3,572.64	-202.61	275.46	-269.98	0.00	0.00	0.00
3,700.00	0.00	0.00	3,672.64	-202.61	275.46	-269.98	0.00	0.00	0.00
3,800.00	0.00	0.00	3,772.64	-202.61	275.46	-269.98	0.00	0.00	0.00
3,900.00	0.00	0.00	3,872.64	-202.61	275.46	-269.98	0.00	0.00	0.00
4,000.00	0.00	0.00	3,972.64	-202.61	275.46	-269.98	0.00	0.00	0.00
4,100.00	0.00	0.00	4,072.64	-202.61	275.46	-269.98	0.00	0.00	0.00
4,200.00	0.00	0.00	4,172.64	-202.61	275.46	-269.98	0.00	0.00	0.00
4,300.00	0.00	0.00	4,272.64	-202.61	275.46	-269.98	0.00	0.00	0.00
4,400.00	0.00	0.00	4,372.64	-202.61	275.46	-269.98	0.00	0.00	0.00
4,500.00	0.00	0.00	4,472.64	-202.61	275.46	-269.98	0.00	0.00	0.00

Database:	Casper District	Local Co-ordinate Reference:	Well Anschutz Equus Farms 03-62-04-0916D2
Company:	Bill Barrett Corp.	TVD Reference:	GL 4613 @ 4613.00ft (Original Well Elev)
Project:	Weld County, CO NAD 83	MD Reference:	GL 4613 @ 4613.00ft (Original Well Elev)
Site:	Anschutz Equus Farms 3-62-4_5 NENE Pad	North Reference:	True
Well:	Anschutz Equus Farms 03-62-04-0916D2	Survey Calculation Method:	Minimum Curvature
Wellbore:	OH		
Design:	Plan #1		

Planned Survey									
Measured Depth (ft)	Inclination (°)	Azimuth (°)	Vertical Depth (ft)	+N/-S (ft)	+E/-W (ft)	Vertical Section (ft)	Dogleg Rate (°/100ft)	Build Rate (°/100ft)	Turn Rate (°/100ft)
4,600.00	0.00	0.00	4,572.64	-202.61	275.46	-269.98	0.00	0.00	0.00
4,700.00	0.00	0.00	4,672.64	-202.61	275.46	-269.98	0.00	0.00	0.00
4,800.00	0.00	0.00	4,772.64	-202.61	275.46	-269.98	0.00	0.00	0.00
4,900.00	0.00	0.00	4,872.64	-202.61	275.46	-269.98	0.00	0.00	0.00
5,000.00	0.00	0.00	4,972.64	-202.61	275.46	-269.98	0.00	0.00	0.00
5,100.00	0.00	0.00	5,072.64	-202.61	275.46	-269.98	0.00	0.00	0.00
5,200.00	0.00	0.00	5,172.64	-202.61	275.46	-269.98	0.00	0.00	0.00
5,300.00	0.00	0.00	5,272.64	-202.61	275.46	-269.98	0.00	0.00	0.00
5,400.00	0.00	0.00	5,372.64	-202.61	275.46	-269.98	0.00	0.00	0.00
5,500.00	0.00	0.00	5,472.64	-202.61	275.46	-269.98	0.00	0.00	0.00
5,600.00	0.00	0.00	5,572.64	-202.61	275.46	-269.98	0.00	0.00	0.00
5,700.00	0.00	0.00	5,672.64	-202.61	275.46	-269.98	0.00	0.00	0.00
5,800.00	0.00	0.00	5,772.64	-202.61	275.46	-269.98	0.00	0.00	0.00
5,890.90	0.00	0.00	5,863.54	-202.61	275.46	-269.98	0.00	0.00	0.00
Start DLS 12.00 TFO 269.67									
5,900.00	1.09	269.67	5,872.64	-202.61	275.37	-269.89	12.00	12.00	0.00
6,000.00	13.09	269.67	5,971.69	-202.68	263.05	-257.57	12.00	12.00	0.00
6,100.00	25.09	269.67	6,066.02	-202.87	230.40	-224.93	12.00	12.00	0.00
6,200.00	37.09	269.67	6,151.49	-203.17	178.86	-173.39	12.00	12.00	0.00
6,300.00	49.09	269.67	6,224.39	-203.57	110.67	-105.22	12.00	12.00	0.00
6,400.00	61.09	269.67	6,281.51	-204.04	28.81	-23.38	12.00	12.00	0.00
6,500.00	73.09	269.67	6,320.36	-204.57	-63.13	68.55	12.00	12.00	0.00
6,600.00	85.09	269.67	6,339.25	-205.14	-161.14	166.54	12.00	12.00	0.00
6,638.92	89.76	269.67	6,341.00	-205.37	-200.01	205.40	12.00	12.00	0.00
Start 9618.77 hold at 6638.92 MD - 03-62-4-091602 LP									
6,700.00	89.76	269.67	6,341.25	-205.72	-261.09	266.47	0.00	0.00	0.00
6,800.00	89.76	269.67	6,341.67	-206.30	-361.09	366.45	0.00	0.00	0.00
6,900.00	89.76	269.67	6,342.09	-206.88	-461.09	466.42	0.00	0.00	0.00
7,000.00	89.76	269.67	6,342.50	-207.46	-561.08	566.40	0.00	0.00	0.00
7,100.00	89.76	269.67	6,342.92	-208.04	-661.08	666.38	0.00	0.00	0.00
7,200.00	89.76	269.67	6,343.33	-208.62	-761.08	766.36	0.00	0.00	0.00
7,300.00	89.76	269.67	6,343.75	-209.20	-861.08	866.33	0.00	0.00	0.00
7,400.00	89.76	269.67	6,344.17	-209.78	-961.07	966.31	0.00	0.00	0.00
7,500.00	89.76	269.67	6,344.58	-210.36	-1,061.07	1,066.29	0.00	0.00	0.00
7,600.00	89.76	269.67	6,345.00	-210.94	-1,161.07	1,166.27	0.00	0.00	0.00
7,700.00	89.76	269.67	6,345.41	-211.52	-1,261.07	1,266.24	0.00	0.00	0.00
7,800.00	89.76	269.67	6,345.83	-212.10	-1,361.06	1,366.22	0.00	0.00	0.00
7,900.00	89.76	269.67	6,346.25	-212.68	-1,461.06	1,466.20	0.00	0.00	0.00
8,000.00	89.76	269.67	6,346.66	-213.26	-1,561.06	1,566.18	0.00	0.00	0.00
8,100.00	89.76	269.67	6,347.08	-213.84	-1,661.06	1,666.15	0.00	0.00	0.00
8,200.00	89.76	269.67	6,347.49	-214.42	-1,761.05	1,766.13	0.00	0.00	0.00
8,300.00	89.76	269.67	6,347.91	-215.00	-1,861.05	1,866.11	0.00	0.00	0.00
8,400.00	89.76	269.67	6,348.32	-215.58	-1,961.05	1,966.09	0.00	0.00	0.00
8,500.00	89.76	269.67	6,348.74	-216.16	-2,061.05	2,066.06	0.00	0.00	0.00
8,600.00	89.76	269.67	6,349.16	-216.74	-2,161.04	2,166.04	0.00	0.00	0.00
8,700.00	89.76	269.67	6,349.57	-217.32	-2,261.04	2,266.02	0.00	0.00	0.00
8,800.00	89.76	269.67	6,349.99	-217.90	-2,361.04	2,366.00	0.00	0.00	0.00
8,900.00	89.76	269.67	6,350.40	-218.48	-2,461.04	2,465.97	0.00	0.00	0.00
9,000.00	89.76	269.67	6,350.82	-219.06	-2,561.03	2,565.95	0.00	0.00	0.00
9,100.00	89.76	269.67	6,351.24	-219.64	-2,661.03	2,665.93	0.00	0.00	0.00
9,200.00	89.76	269.67	6,351.65	-220.22	-2,761.03	2,765.91	0.00	0.00	0.00
9,300.00	89.76	269.67	6,352.07	-220.80	-2,861.03	2,865.88	0.00	0.00	0.00
9,400.00	89.76	269.67	6,352.48	-221.38	-2,961.02	2,965.86	0.00	0.00	0.00

Database:	Casper District	Local Co-ordinate Reference:	Well Anschutz Equus Farms 03-62-04-0916D2
Company:	Bill Barrett Corp.	TVD Reference:	GL 4613 @ 4613.00ft (Original Well Elev)
Project:	Weld County, CO NAD 83	MD Reference:	GL 4613 @ 4613.00ft (Original Well Elev)
Site:	Anschutz Equus Farms 3-62-4_5 NENE Pad	North Reference:	True
Well:	Anschutz Equus Farms 03-62-04-0916D2	Survey Calculation Method:	Minimum Curvature
Wellbore:	OH		
Design:	Plan #1		

Planned Survey									
Measured Depth (ft)	Inclination (°)	Azimuth (°)	Vertical Depth (ft)	+N/-S (ft)	+E/-W (ft)	Vertical Section (ft)	Dogleg Rate (°/100ft)	Build Rate (°/100ft)	Turn Rate (°/100ft)
9,500.00	89.76	269.67	6,352.90	-221.96	-3,061.02	3,065.84	0.00	0.00	0.00
9,600.00	89.76	269.67	6,353.31	-222.54	-3,161.02	3,165.82	0.00	0.00	0.00
9,700.00	89.76	269.67	6,353.73	-223.12	-3,261.02	3,265.79	0.00	0.00	0.00
9,800.00	89.76	269.67	6,354.15	-223.70	-3,361.01	3,365.77	0.00	0.00	0.00
9,900.00	89.76	269.67	6,354.56	-224.28	-3,461.01	3,465.75	0.00	0.00	0.00
10,000.00	89.76	269.67	6,354.98	-224.86	-3,561.01	3,565.73	0.00	0.00	0.00
10,100.00	89.76	269.67	6,355.39	-225.44	-3,661.00	3,665.70	0.00	0.00	0.00
10,200.00	89.76	269.67	6,355.81	-226.02	-3,761.00	3,765.68	0.00	0.00	0.00
10,300.00	89.76	269.67	6,356.23	-226.60	-3,861.00	3,865.66	0.00	0.00	0.00
10,400.00	89.76	269.67	6,356.64	-227.18	-3,961.00	3,965.64	0.00	0.00	0.00
10,500.00	89.76	269.67	6,357.06	-227.76	-4,060.99	4,065.61	0.00	0.00	0.00
10,600.00	89.76	269.67	6,357.47	-228.34	-4,160.99	4,165.59	0.00	0.00	0.00
10,700.00	89.76	269.67	6,357.89	-228.91	-4,260.99	4,265.57	0.00	0.00	0.00
10,800.00	89.76	269.67	6,358.30	-229.49	-4,360.99	4,365.55	0.00	0.00	0.00
10,900.00	89.76	269.67	6,358.72	-230.07	-4,460.98	4,465.52	0.00	0.00	0.00
11,000.00	89.76	269.67	6,359.14	-230.65	-4,560.98	4,565.50	0.00	0.00	0.00
11,100.00	89.76	269.67	6,359.55	-231.23	-4,660.98	4,665.48	0.00	0.00	0.00
11,200.00	89.76	269.67	6,359.97	-231.81	-4,760.98	4,765.46	0.00	0.00	0.00
11,300.00	89.76	269.67	6,360.38	-232.39	-4,860.97	4,865.43	0.00	0.00	0.00
11,400.00	89.76	269.67	6,360.80	-232.97	-4,960.97	4,965.41	0.00	0.00	0.00
11,500.00	89.76	269.67	6,361.22	-233.55	-5,060.97	5,065.39	0.00	0.00	0.00
11,600.00	89.76	269.67	6,361.63	-234.13	-5,160.97	5,165.37	0.00	0.00	0.00
11,700.00	89.76	269.67	6,362.05	-234.71	-5,260.96	5,265.34	0.00	0.00	0.00
11,800.00	89.76	269.67	6,362.46	-235.29	-5,360.96	5,365.32	0.00	0.00	0.00
11,900.00	89.76	269.67	6,362.88	-235.87	-5,460.96	5,465.30	0.00	0.00	0.00
12,000.00	89.76	269.67	6,363.29	-236.45	-5,560.96	5,565.28	0.00	0.00	0.00
12,100.00	89.76	269.67	6,363.71	-237.03	-5,660.95	5,665.25	0.00	0.00	0.00
12,200.00	89.76	269.67	6,364.13	-237.61	-5,760.95	5,765.23	0.00	0.00	0.00
12,300.00	89.76	269.67	6,364.54	-238.19	-5,860.95	5,865.21	0.00	0.00	0.00
12,400.00	89.76	269.67	6,364.96	-238.77	-5,960.95	5,965.19	0.00	0.00	0.00
12,500.00	89.76	269.67	6,365.37	-239.35	-6,060.94	6,065.17	0.00	0.00	0.00
12,600.00	89.76	269.67	6,365.79	-239.93	-6,160.94	6,165.14	0.00	0.00	0.00
12,700.00	89.76	269.67	6,366.21	-240.51	-6,260.94	6,265.12	0.00	0.00	0.00
12,800.00	89.76	269.67	6,366.62	-241.09	-6,360.94	6,365.10	0.00	0.00	0.00
12,900.00	89.76	269.67	6,367.04	-241.67	-6,460.93	6,465.08	0.00	0.00	0.00
13,000.00	89.76	269.67	6,367.45	-242.25	-6,560.93	6,565.05	0.00	0.00	0.00
13,100.00	89.76	269.67	6,367.87	-242.83	-6,660.93	6,665.03	0.00	0.00	0.00
13,200.00	89.76	269.67	6,368.28	-243.41	-6,760.93	6,765.01	0.00	0.00	0.00
13,300.00	89.76	269.67	6,368.70	-243.99	-6,860.92	6,864.99	0.00	0.00	0.00
13,400.00	89.76	269.67	6,369.12	-244.57	-6,960.92	6,964.96	0.00	0.00	0.00
13,500.00	89.76	269.67	6,369.53	-245.15	-7,060.92	7,064.94	0.00	0.00	0.00
13,600.00	89.76	269.67	6,369.95	-245.73	-7,160.92	7,164.92	0.00	0.00	0.00
13,700.00	89.76	269.67	6,370.36	-246.31	-7,260.91	7,264.90	0.00	0.00	0.00
13,800.00	89.76	269.67	6,370.78	-246.89	-7,360.91	7,364.87	0.00	0.00	0.00
13,900.00	89.76	269.67	6,371.20	-247.47	-7,460.91	7,464.85	0.00	0.00	0.00
14,000.00	89.76	269.67	6,371.61	-248.05	-7,560.91	7,564.83	0.00	0.00	0.00
14,100.00	89.76	269.67	6,372.03	-248.63	-7,660.90	7,664.81	0.00	0.00	0.00
14,200.00	89.76	269.67	6,372.44	-249.21	-7,760.90	7,764.78	0.00	0.00	0.00
14,300.00	89.76	269.67	6,372.86	-249.79	-7,860.90	7,864.76	0.00	0.00	0.00
14,400.00	89.76	269.67	6,373.28	-250.37	-7,960.90	7,964.74	0.00	0.00	0.00
14,500.00	89.76	269.67	6,373.69	-250.95	-8,060.89	8,064.72	0.00	0.00	0.00
14,600.00	89.76	269.67	6,374.11	-251.53	-8,160.89	8,164.69	0.00	0.00	0.00
14,700.00	89.76	269.67	6,374.52	-252.11	-8,260.89	8,264.67	0.00	0.00	0.00

Database:	Casper District	Local Co-ordinate Reference:	Well Anschutz Equus Farms 03-62-04-0916D2
Company:	Bill Barrett Corp.	TVD Reference:	GL 4613 @ 4613.00ft (Original Well Elev)
Project:	Weld County, CO NAD 83	MD Reference:	GL 4613 @ 4613.00ft (Original Well Elev)
Site:	Anschutz Equus Farms 3-62-4_5 NENE Pad	North Reference:	True
Well:	Anschutz Equus Farms 03-62-04-0916D2	Survey Calculation Method:	Minimum Curvature
Wellbore:	OH		
Design:	Plan #1		

Planned Survey										
Measured Depth (ft)	Inclination (°)	Azimuth (°)	Vertical Depth (ft)	+N/-S (ft)	+E/-W (ft)	Vertical Section (ft)	Dogleg Rate (°/100ft)	Build Rate (°/100ft)	Turn Rate (°/100ft)	
14,800.00	89.76	269.67	6,374.94	-252.69	-8,360.89	8,364.65	0.00	0.00	0.00	
14,900.00	89.76	269.67	6,375.35	-253.27	-8,460.88	8,464.63	0.00	0.00	0.00	
15,000.00	89.76	269.67	6,375.77	-253.85	-8,560.88	8,564.60	0.00	0.00	0.00	
15,100.00	89.76	269.67	6,376.19	-254.43	-8,660.88	8,664.58	0.00	0.00	0.00	
15,200.00	89.76	269.67	6,376.60	-255.01	-8,760.88	8,764.56	0.00	0.00	0.00	
15,300.00	89.76	269.67	6,377.02	-255.59	-8,860.87	8,864.54	0.00	0.00	0.00	
15,400.00	89.76	269.67	6,377.43	-256.17	-8,960.87	8,964.51	0.00	0.00	0.00	
15,500.00	89.76	269.67	6,377.85	-256.75	-9,060.87	9,064.49	0.00	0.00	0.00	
15,600.00	89.76	269.67	6,378.27	-257.33	-9,160.87	9,164.47	0.00	0.00	0.00	
15,700.00	89.76	269.67	6,378.68	-257.91	-9,260.86	9,264.45	0.00	0.00	0.00	
15,800.00	89.76	269.67	6,379.10	-258.49	-9,360.86	9,364.42	0.00	0.00	0.00	
15,900.00	89.76	269.67	6,379.51	-259.07	-9,460.86	9,464.40	0.00	0.00	0.00	
16,000.00	89.76	269.67	6,379.93	-259.65	-9,560.85	9,564.38	0.00	0.00	0.00	
16,100.00	89.76	269.67	6,380.34	-260.23	-9,660.85	9,664.36	0.00	0.00	0.00	
16,200.00	89.76	269.67	6,380.76	-260.81	-9,760.85	9,764.33	0.00	0.00	0.00	
16,257.68	89.76	269.67	6,381.00	-261.14	-9,818.53	9,822.00	0.00	0.00	0.00	
TD at 16257.68 - 03-62-4-09160 PBHL										

Design Targets										
Target Name	Dip Angle (°)	Dip Dir. (°)	TVD (ft)	+N/-S (ft)	+E/-W (ft)	Northing (usft)	Easting (usft)	Latitude	Longitude	
03-62-4-091602 LP	0.00	0.00	6,341.00	-205.37	-200.01	1,339,478.42	3,329,002.35	40° 15' 33.350 N	104° 19' 16.030 W	
- hit/miss target										
- Shape										
- plan misses target center by 0.01ft at 6638.92ft MD (6341.00 TVD, -205.37 N, -200.01 E)										
- Point										
03-62-4-09160 PBHL	0.00	0.00	6,381.00	-261.14	-9,818.53	1,339,294.71	3,319,385.44	40° 15' 32.780 N	104° 21' 20.100 W	
- plan hits target center										
- Point										

Plan Annotations					
Measured Depth (ft)	Vertical Depth (ft)	Local Coordinates			
		+N/-S (ft)	+E/-W (ft)	Comment	
800.00	800.00	0.00	0.00	Start Build 2.00	
1,299.85	1,297.32	-25.77	35.04	Start 1468.66 hold at 1299.85 MD	
2,768.51	2,743.68	-176.84	240.42	Start Drop -2.00	
3,268.36	3,241.00	-202.61	275.46	Start 2622.54 hold at 3268.36 MD	
5,890.90	5,863.54	-202.61	275.46	Start DLS 12.00 TFO 269.67	
6,638.92	6,341.00	-205.37	-200.01	Start 9618.77 hold at 6638.92 MD	
16,257.68	6,381.00	-261.14	-9,818.53	TD at 16257.68	