

# LEGEND:

● PROPOSED LOCATION



## BILL BARRETT CORPORATION

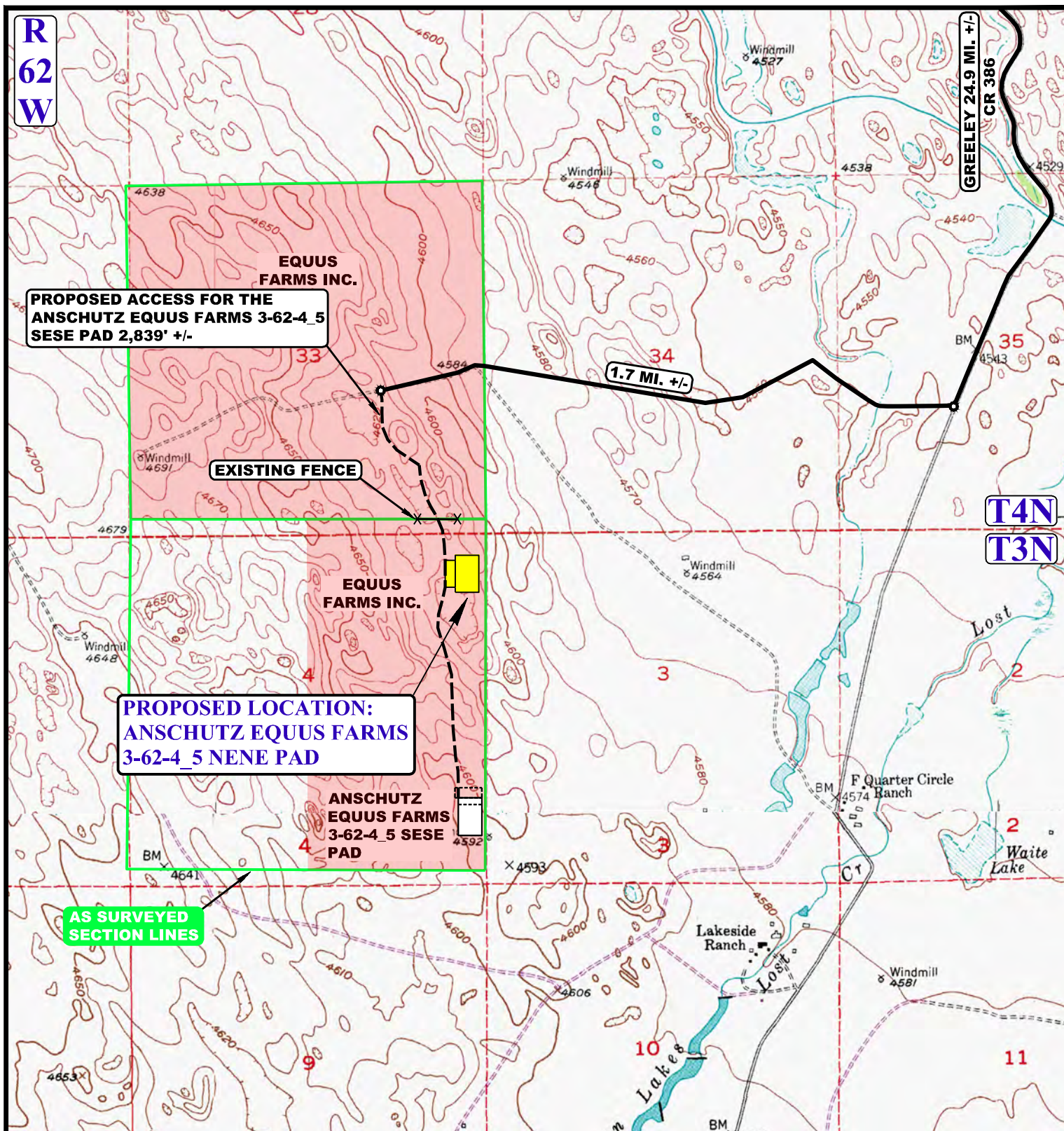
ANSCHUTZ EQUUS FARMS 3-62-4\_5 NENE PAD  
NE 1/4 NE 1/4, SECTION 4, T3N, R62W, 6th P.M.  
WELD COUNTY, COLORADO



UELS, LLC  
Corporate Office \* 85 South 200 East  
Vernal, UT 84078 \* (435) 789-1017

DRAWN BY: J.L.G.	DATE DRAWN: 01-12-16
SCALE: 1:100,000	REVISED: 00-00-00
ACCESS ROAD MAP	TOPO A





NOTE: PARCEL DATA SHOWN HAS BEEN OBTAINED FROM VARIOUS SOURCES AND SHOULD BE USED FOR MAPPING, GRAPHIC AND PLANNING PURPOSES ONLY. NO WARRANTY IS MADE BY UINTAH ENGINEERING AND LAND SURVEYING (UELS) FOR ACCURACY OF THE PARCEL DATA.

#### LEGEND:

- EXISTING ROAD
- - - - - PROPOSED ROAD
- - - - - PROPOSED ROAD (SERVICING OTHER WELLS)
- AS SURVEYED SECTION LINES

#### BILL BARRETT CORPORATION

**ANSCHUTZ EQUUS FARMS 3-62-4\_5 NENE PAD**  
**NE 1/4 NE 1/4, SECTION 4, T3N, R62W, 6th P.M.**  
**WELD COUNTY, COLORADO**



**UELS, LLC**  
Corporate Office \* 85 South 200 East  
Vernal, UT 84078 \* (435) 789-1017



DRAWN BY: J.L.G.	DATE DRAWN: 01-12-16
SCALE: 1"=2000'	REVISED: 00-00-00
<b>ACCESS ROAD MAP</b>	<b>TOPO B</b>

PROCEED IN AN EASTERLY, THEN SOUTHEASTERLY DIRECTION FROM GREELEY, COLORADO ALONG U.S. HIGHWAY 34 APPROXIMATELY 22.9 MILES TO THE JUNCTION OF THIS ROAD AND COUNTY ROAD 386 TO THE SOUTH; TURN RIGHT AND PROCEED IN A SOUTHERLY DIRECTION APPROXIMATELY 2.0 MILES TO THE JUNCTION OF THIS ROAD AND AN EXISTING ROAD TO THE WEST; TURN RIGHT AND PROCEED IN A WESTERLY DIRECTION APPROXIMATELY 1.7 MILES TO THE BEGINNING OF THE PROPOSED ACCESS ROAD FOR THE ANCHUTZ EQUUS FARMS 3-62-4\_5 SESE PAD TO THE SOUTH; FOLLOW ROAD FLAGS IN A SOUTHERLY DIRECTION APPROXIMATELY 2,839' TO THE PROPOSED LOCATION.

TOTAL DISTANCE FROM GREELEY, COLORADO TO THE PROPOSED LOCATION IS APPROXIMATELY 27.1 MILES.

**BILL BARRETT CORPORATION**

ANSCHUTZ EQUUS FARMS 3-62-4\_5 NENE PAD  
NE 1/4 NE 1/4, SECTION 4, T3N, R62W, 6th P.M.  
WELD COUNTY, COLORADO



UELS, LLC  
Corporate Office \* 85 South 200 East  
Vernal, UT 84078 \* (435) 789-1017

DRAWN BY: J.L.G.	DATE DRAWN: 01-12-16
	REVISED: 00-00-00
ROAD DESCRIPTION	