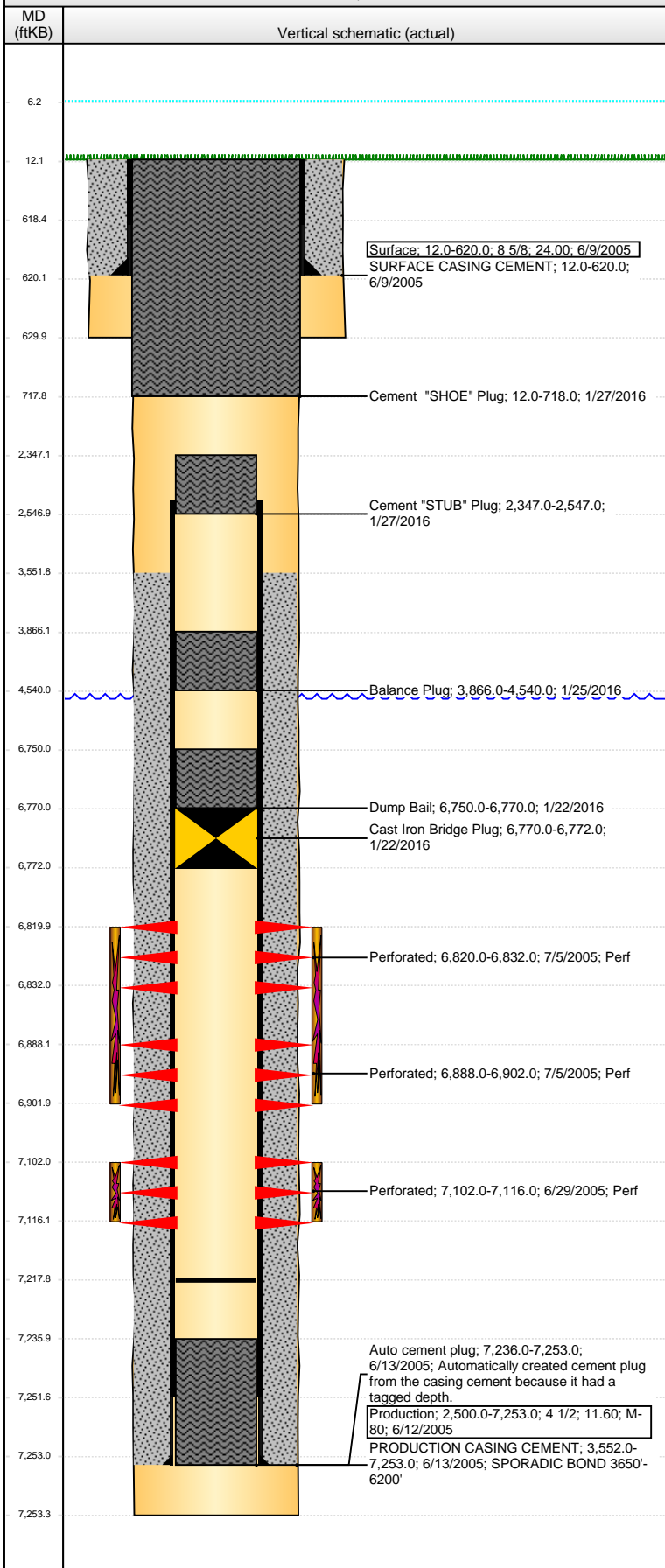


Well Name: GERRITY STATE G36-17

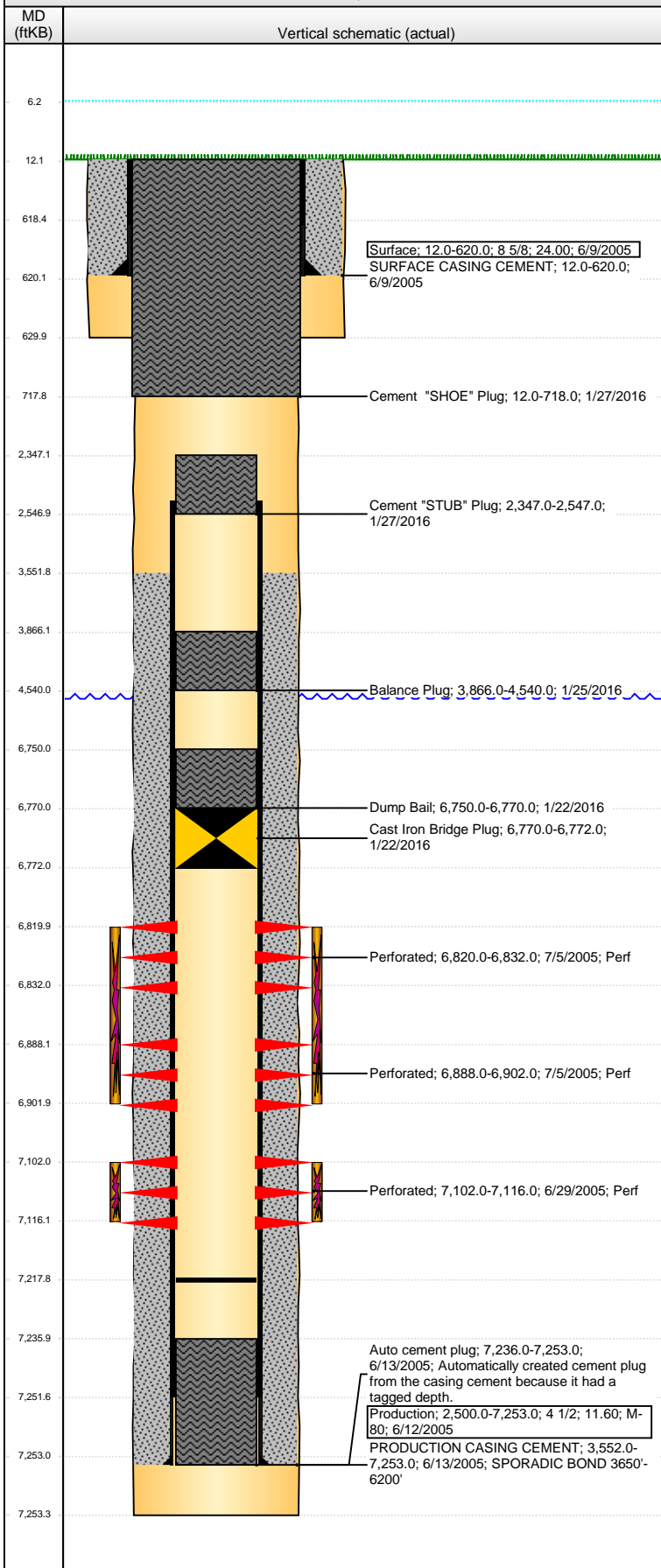
VERTICAL - ORIGINAL HOLE, 2/19/2016 10:19:32 AM



Well Header														
API 05-123-22820		Business Unit DJ BASIN		District 15		Well Config VERTICAL								
Original KB Elevation (ft) 4,841.00		KB - GL / MSL (ftKB) 12.00		Spud Date 6/9/2005		P & A Date 1/27/2016								
Comment CBP pushed to 7176' 7/6/06														
Directions To Well RD 38 & RD 49. NORTH 5/10. WEST 1/10. NORTH 3/10 INTO.														
Congressional Location														
Quarter 1	Quarter 2	Quarter 3 NW	Quarter 4 NE	Section 36	Township 4 N	Twnshp N...	Range 65	Rng E/W Dir W						
Bottom Hole Location														
North-South Distance (ft)		From N or S Line		East-West Distance (ft)		From E or W Line								
Plug Back Total Depths														
Date	Depth (ftKB)	Method			Com									
6/12/2005	7,236.0	CASING TALLY			GUIDE SHOE									
6/27/2005	7,212.0	CASED HOLE LOG												
7/6/2006	7,176.0	TAG			C/O LANDED TBG									
9/18/2009	7,172.0	TAG			BIT & SCRAPER.									
10/5/2009	7,218.0	TAG			C/O TO 7218' KB.									
Wellbore Sections														
Section Des		Size (in)		Act Top, MD (ftKB)		Act Btm, MD (ftKB)								
SURFACE		12 1/4		12.0		630.0								
PRODUCTION		7 7/8		630.0		7,253.3								
Zone Statuses														
Zone Name	Status Date	Status	Fluid Type	Job	Prod Method									
NIOBRARA	7/7/2005	PR	Gas	DRILLING/CO...	Flowing									
NIOBRARA	1/30/2010	PR	Water											
NIOBRARA	1/22/2016	P&A	Gas	ABANDON WE...										
CODELL	7/7/2005	PR	Gas	DRILLING/CO...	Flowing									
CODELL	11/9/2009	PR	Gas	RE-FRAC, 9/18...										
CODELL	1/30/2010	PR	Water											
CODELL	1/22/2016	P&A	Gas	ABANDON WE...										
Casing Strings														
Surface, 620.0ftKB														
Casing Description	Run Date	OD (in)	Wt/Len (l...	Grade	Top, MD (ft...	MD (ftKB)								
Surface	6/9/2005	8 5/8	24.00		12.0	620.0								
Production, 7,253.0ftKB														
Casing Description	Run Date	OD (in)	Wt/Len (l...	Grade	Top, MD (ft...	MD (ftKB)								
Production	6/12/2005	4 1/2	11.60	M-80	12.0	7,253.0								
Cement														
Description					Top Depth (ftKB)	Bottom Depth (ftKB)								
SURFACE CASING CEMENT					12.0	620.0								
Description					Top Depth (ftKB)	Bottom Depth (ftKB)								
PRODUCTION CASING CEMENT					3,552.0	7,253.0								
Description					Top Depth (ftKB)	Bottom Depth (ftKB)								
Dump Bail					6,750.0	6,770.0								
Description					Top Depth (ftKB)	Bottom Depth (ftKB)								
Balance Plug					3,866.0	4,540.0								
Description					Top Depth (ftKB)	Bottom Depth (ftKB)								
Cement "STUB" Plug					2,347.0	2,547.0								
Description					Top Depth (ftKB)	Bottom Depth (ftKB)								
Cement "SHOE" Plug					12.0	718.0								
Tubing Strings														
Tubing Description	Run Date	String...	ID (in)	Wt (lb/ft)	Grade	Len (ft)	Set De...							
Tubing - Production	7/6/2006	2 3/8	1.995	4.70	J-55	7,068.07								
Tubing Description	Run Date	String...	ID (in)	Wt (lb/ft)	Grade	Len (ft)	Set De...							
Tubing - Frac string	9/21/2009	2 7/8	2.441	6.50	N-80	7,012.99								
Tubing Description	Run Date	String...	ID (in)	Wt (lb/ft)	Grade	Len (ft)	Set De...							
Tubing - Production	10/2/2009	2 3/8	1.995	4.70	J-55	7,056.78								
Tubing Description	Run Date	String...	ID (in)	Wt (lb/ft)	Grade	Len (ft)	Set De...							
Tubing - Production	6/4/2014	2 3/8	1.995	4.70	J-55	7,063.00								

Well Name: GERRITY STATE G36-17

VERTICAL - ORIGINAL HOLE, 2/19/2016 10:19:34 AM



Perforation Data

Zone	Brnch/St g	Entered Shot Total	Top (ftKB)	Btm (ftKB)	Date
NIORARA, ORIGINAL HOLE		72	6,820.00	6,832.00	7/5/2005
NIORARA, ORIGINAL HOLE		84	6,888.00	6,902.00	7/5/2005
CODELL, ORIGINAL HOLE		56	7,102.00	7,116.00	6/29/2005

Stimulations & Treatments

Date	Zone	Primary Job Type
7/5/2005	NIORARA, ORIGINAL HOLE	DRILLING/COMPLETION - ORIGINAL
Technical Result	Tech Result Details	Tech Result Note
Comment		

Date	Zone	Primary Job Type
7/5/2005	CODELL, ORIGINAL HOLE	DRILLING/COMPLETION - ORIGINAL
Technical Result	Tech Result Details	Tech Result Note
Comment		

Date	Zone	Primary Job Type
9/30/2009	CODELL, ORIGINAL HOLE	RE-FRAC
Technical Result	Tech Result Details	Tech Result Note
Success	According to Plan	
Comment		

PRE-ISIP = 2832 PSI, 5-MIN = 1711 PSI. RATE WAS INCREASED WITH THE EXCESSIVE LEAKOFF. DURING THE 2.0 - 4.0 PPG SAND RAMP THE MAG FLOW TUBE WAS CHANGED OUT TO THE TURBINE DUE TO EXCESSIVE WATER USAGE. TURBINE WAS USED FOR THE REMAINDER OF THE TREATMENT. ALSO, A PUMP WENT DOWN IN THE 4.0 PPG SAND. POST-ISIP = 3699 PSI, 5-MIN = 3269 PSI.

Other In Hole

Run Date	Des	OD (in)	Top (ftKB)	Btm (ftKB)
1/22/2016	Cast Iron Bridge Plug	3.99	6,770.0	6,772.0

Logs

Date	Type	Top, MD (ftKB)	Btm, MD (ftKB)
6/13/2005	COMPENSATED DENSITY	4,200.0	7,241.0
6/13/2005	INDUCTION	620.0	7,261.0
6/27/2005	CBL/CCL/GR	3,350.0	7,209.0
9/11/2013	GYRO	12.0	7,000.0