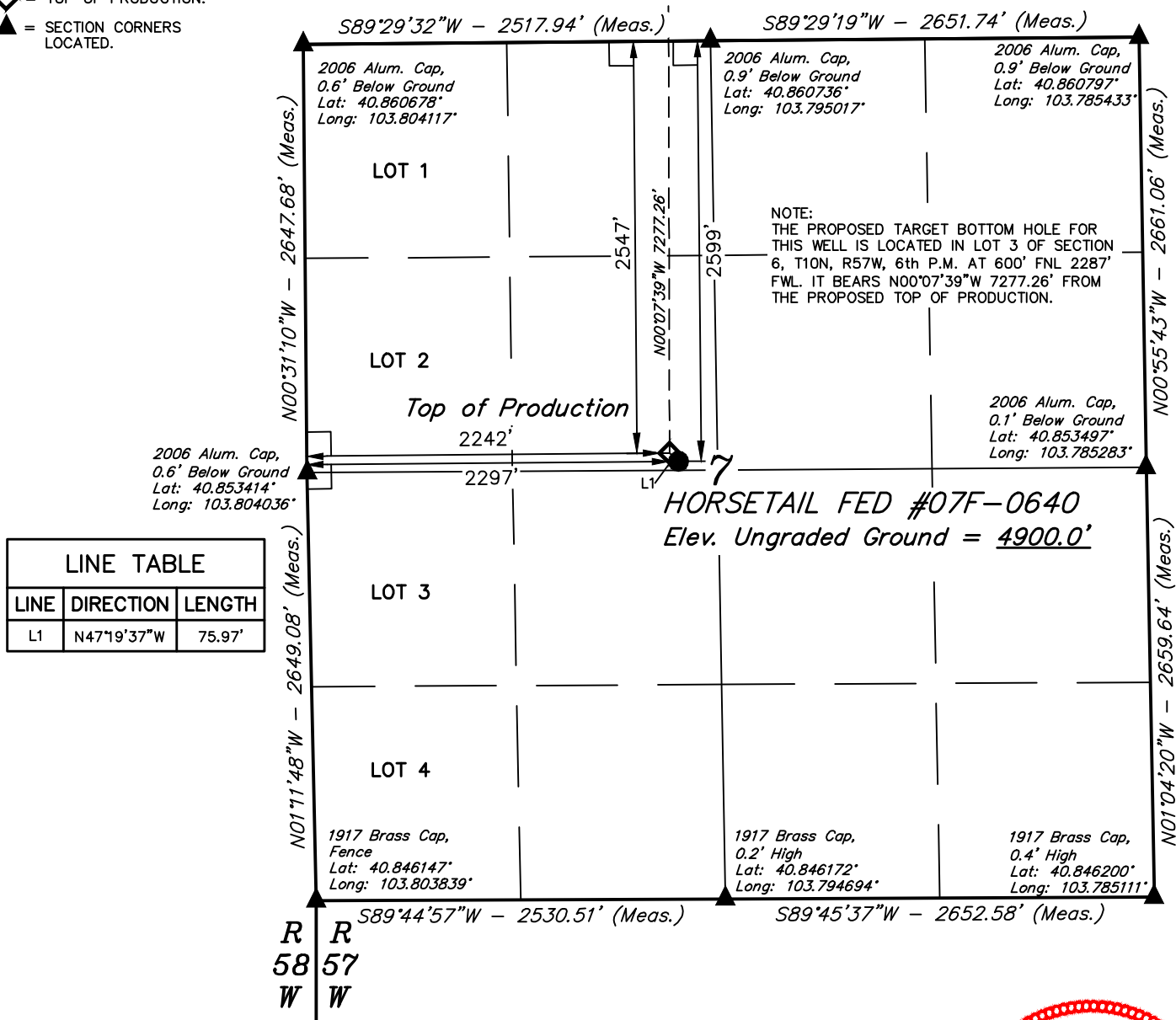


**LEGEND:**

- = 90° SYMBOL  
 ● = PROPOSED WELLHEAD.  
 ○ = TARGET BOTTOM HOLE.  
 ◇ = TOP OF PRODUCTION.  
 ▲ = SECTION CORNERS LOCATED.

**T10N, R57W, 6th P.M.**

Target  
Bottom Hole



PDOP = 1.0



NAD 83 (TOP OF PRODUCTION)	NAD 83 (SURFACE LOCATION)
LATITUDE = 40°51'13.47" (40.853742)	LATITUDE = 40°51'12.96" (40.853600)
LONGITUDE = 103°47'45.37" (103.795936)	LONGITUDE = 103°47'44.64" (103.795733)
NAD 27 (TOP OF PRODUCTION)	NAD 27 (SURFACE LOCATION)
LATITUDE = 40°51'13.52" (40.853756)	LATITUDE = 40°51'13.01" (40.853614)
LONGITUDE = 103°47'43.56" (103.795433)	LONGITUDE = 103°47'42.84" (103.795233)

**BASIS OF BEARINGS**

BASIS OF BEARINGS IS A G.P.S. OBSERVATION

**BASIS OF ELEVATION**

SPOT ELEVATION LOCATED AT THE NORTHEAST CORNER OF SECTION 15, T9N, R58W, 6th P.M. TAKEN FROM THE GATEHOOK SPRING, QUADRANGLE, COLORADO, WELD COUNTY, 7.5 MINUTE QUAD (TOPOGRAPHIC MAP) PUBLISHED BY THE UNITED STATES DEPARTMENT OF THE INTERIOR, GEOLOGICAL SURVEY. SAID ELEVATION IS MARKED AS BEING 4679 FEET.



**CERTIFICATE**  
THIS IS TO CERTIFY THAT THE ABOVE PLAT WAS PREPARED FROM FIELD NOTES OF ACTUAL SURVEYS MADE BY ME OR UNDER MY SUPERVISION AND THAT THE SAME ARE TRUE AND CORRECT TO THE BEST OF MY KNOWLEDGE AND BELIEF.

REGISTERED LAND SURVEYOR  
REGISTRATION NO. 28285  
STATE OF COLORADO

**WHITING OIL & GAS CORP.**

**HORSETAIL FED #07F-0640 (SURFACE LOCATION)**  
**SE 1/4 NW 1/4, SECTION 7, T10N, R57W, 6th P.M.**  
**WELD COUNTY, COLORADO**

SURVEYED BY: GREG WEIMER, C.J.	DATE: 12-09-14
DRAWN BY: K.B.	DATE DRAWN: 11-07-14
SCALE: 1" = 1000'	REVISED: 02-17-16 M.D.

**WELL LOCATION PLAT**



**UELS, LLC**  
Corporate Office \* 85 South 200 East  
Vernal, UT 84078 \* (435) 789-1017

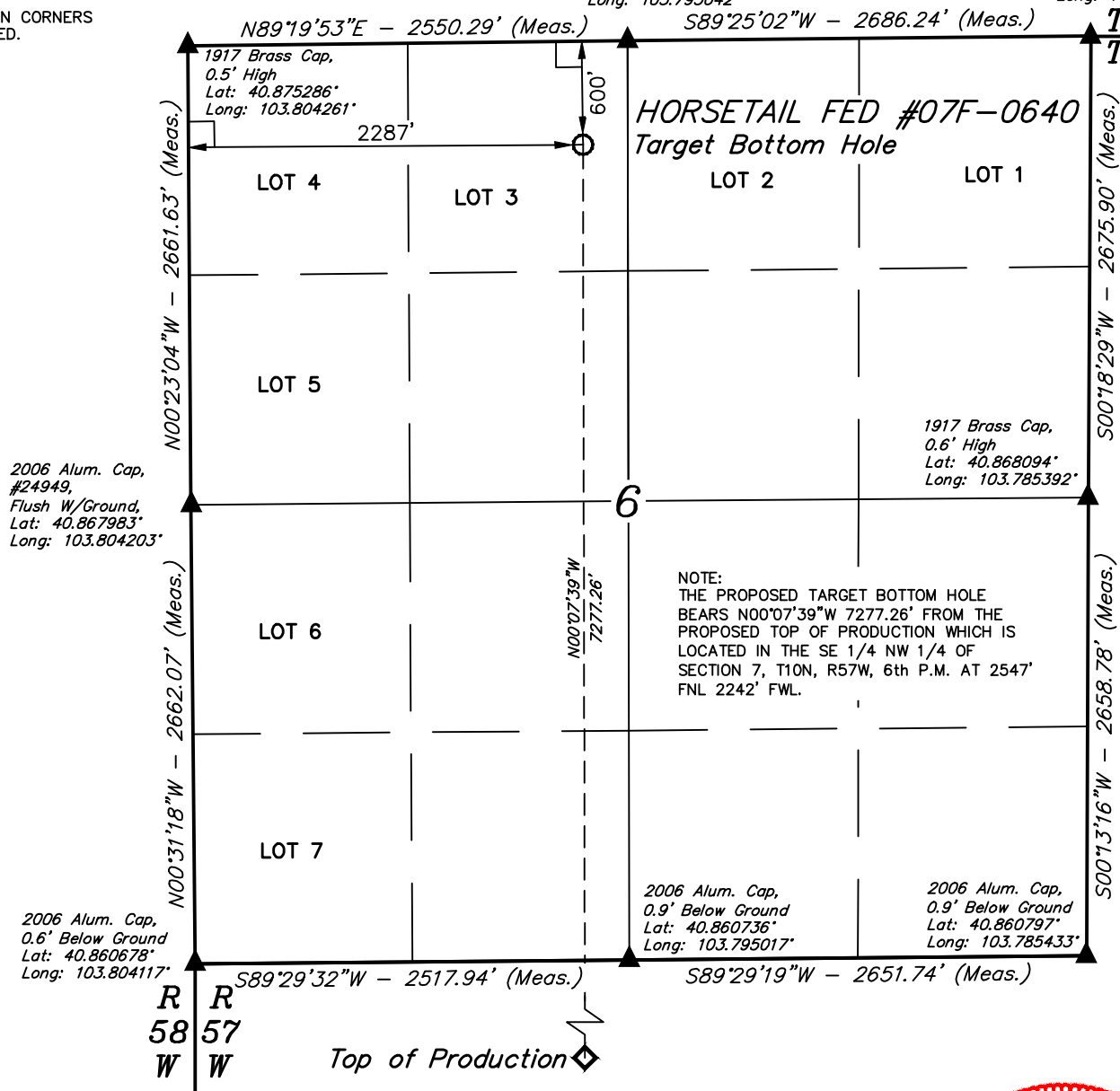
**LEGEND:**

- = 90° SYMBOL  
 ○ = TARGET BOTTOM HOLE.  
 ◇ = TOP OF PRODUCTION.  
 ▲ = SECTION CORNERS LOCATED.

**T10N, R57W, 6th P.M.**

1917 Brass Cap,  
0.3' High  
Lat: 40.875367°  
Long: 103.795042°

1917 Brass Cap,  
0.4' High  
Lat: 40.875436°  
Long: 103.785333°

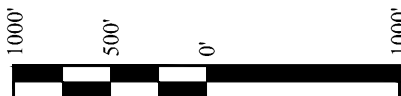


NOTE:  
THE PROPOSED TARGET BOTTOM HOLE  
BEARS N00°07'39\"W 7277.26' FROM THE  
PROPOSED TOP OF PRODUCTION WHICH IS  
LOCATED IN THE SE 1/4 NW 1/4 OF  
SECTION 7, T10N, R57W, 6th P.M. AT 2547'  
FNL 2242' FWL.

2006 Alum. Cap,  
0.9' Below Ground  
Lat: 40.860736°  
Long: 103.795017°

2006 Alum. Cap,  
0.9' Below Ground  
Lat: 40.860797°  
Long: 103.785433°

NAD 83 (TARGET BOTTOM HOLE)
LATITUDE = 40°52'25.36" (40.873711)
LONGITUDE = 103°47'45.53" (103.795981)
NAD 27 (TARGET BOTTOM HOLE)
LATITUDE = 40°52'25.41" (40.873725)
LONGITUDE = 103°47'43.73" (103.795481)

**CERTIFICATE**

THIS IS TO CERTIFY THAT THE ABOVE PLAT WAS PREPARED FROM FIELD NOTES OF ACTUAL SURVEYS MADE BY ME OR UNDER MY SUPERVISION AND THAT THE SAME ARE TRUE AND CORRECT TO THE BEST OF MY KNOWLEDGE AND BELIEF.

REGISTERED LAND SURVEYOR  
REGISTRATION NO. 28285  
STATE OF COLORADO

02-17-16

**BASIS OF BEARINGS**  
BASIS OF BEARINGS IS A G.P.S. OBSERVATION

**BASIS OF ELEVATION**

SPOT ELEVATION LOCATED AT THE NORTHEAST CORNER OF SECTION 15, T9N, R58W, 6th P.M. TAKEN FROM THE GATEHOOK SPRING, QUADRANGLE, COLORADO, WELD COUNTY, 7.5 MINUTE QUAD (TOPOGRAPHIC MAP) PUBLISHED BY THE UNITED STATES DEPARTMENT OF THE INTERIOR, GEOLOGICAL SURVEY. SAID ELEVATION IS MARKED AS BEING 4679 FEET.

**WHITING OIL & GAS CORP.**

**HORSETAIL FED #07F-0640 (TARGET BOTTOM HOLE)  
LOT 3, SECTION 6, T10N, R57W, 6th P.M.  
WELD COUNTY, COLORADO**

SURVEYED BY: GREG WEIMER, C.J.	DATE: 12-09-14
DRAWN BY: K.B.	DATE DRAWN: 11-07-14
SCALE: 1" = 1000'	REVISED: 02-17-16 M.D.

**WELL LOCATION PLAT**

**UELS, LLC**  
Corporate Office \* 85 South 200 East  
Vernal, UT 84078 \* (435) 789-1017