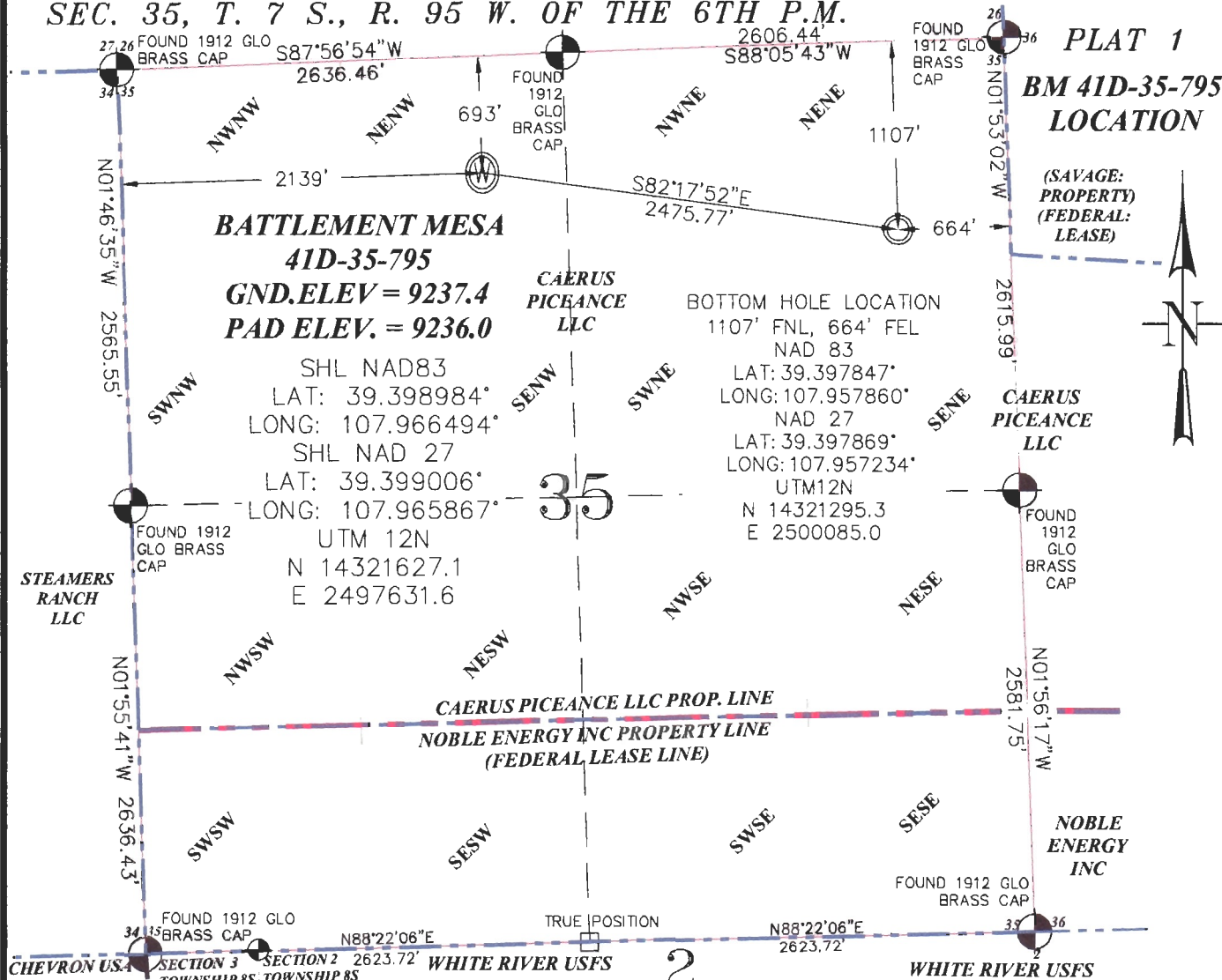


SEC. 35, T. 7 S., R. 95 W. OF THE 6TH P.M.



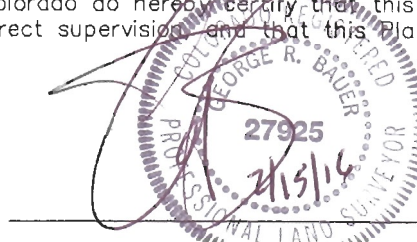
THIS WELL LOCATION PLAT WAS PREPARED FOR CAERUS PICEANCE LLC TO LOCATE THE BATTLEMENT MESA 41D-35-795 WELL, 693 FEET FROM THE NORTH LINE OF SECTION 35 AND 2139 FEET FROM THE WEST LINE OF SECTION 35, SITUATED IN THE NENW OF SECTION 35, T. 7 S., R. 95 W. OF THE 6TH P.M. GARFIELD COUNTY, COLORADO.

#### REFERENCE NOTES

- 1) T. 7 S., R. 95 W., 6TH P.M. GLO PLAT.
- 2) U.S.G.S. QUAD: PARACHUTE, CO
- 3) ELEVATIONS BASED ON N.A.V.D. 1988 LIDAR BASED CONTROL PT CP MON 8
- 4) LATITUDES AND LONGITUDES ARE BASED ON NAD 83, COLORADO CENTRAL ZONE.
- 5) GPS OPERATOR ROBERT WOOD, OBSERVED A PDOP OF 1.9.
- 6) ALL GPS OBSERVATIONS ARE IN COMPLIANCE WITH COGCC RULE NO. 215.
- 7) SURFACE AND BOTTOM HOLE LOCATIONS ARE MEASURED 90° FROM SECTION LINES.

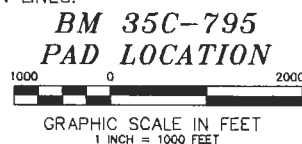
#### SURVEYOR'S CERTIFICATE

I, George R. Bauer, a Professional Land Surveyor in the State of Colorado do hereby certify that this Survey was made under my direct supervision and that this Plat represents said Survey.



#### -LEGEND-

- FIELD SURVEYED SECTION CORNER LOCATIONS
- FIELD SURVEYED WELL SHL LOCATION
- CALCULATED BOTTOM HOLE LOCATION



Caerus Piceance LLC



#### WELL LOCATION PLAT

CONSTRUCTION SURVEYS, INC.  
2012 SUNRISE BLVD. SALT, CO  
81652 (970)876-5753

SURVEY BY:REW 12/10/15

PDOP: 1.9

DRAWN BY:REW 02/10/16

DWG:CAERUS\BM35C-795PLAT\_1

REVISED: