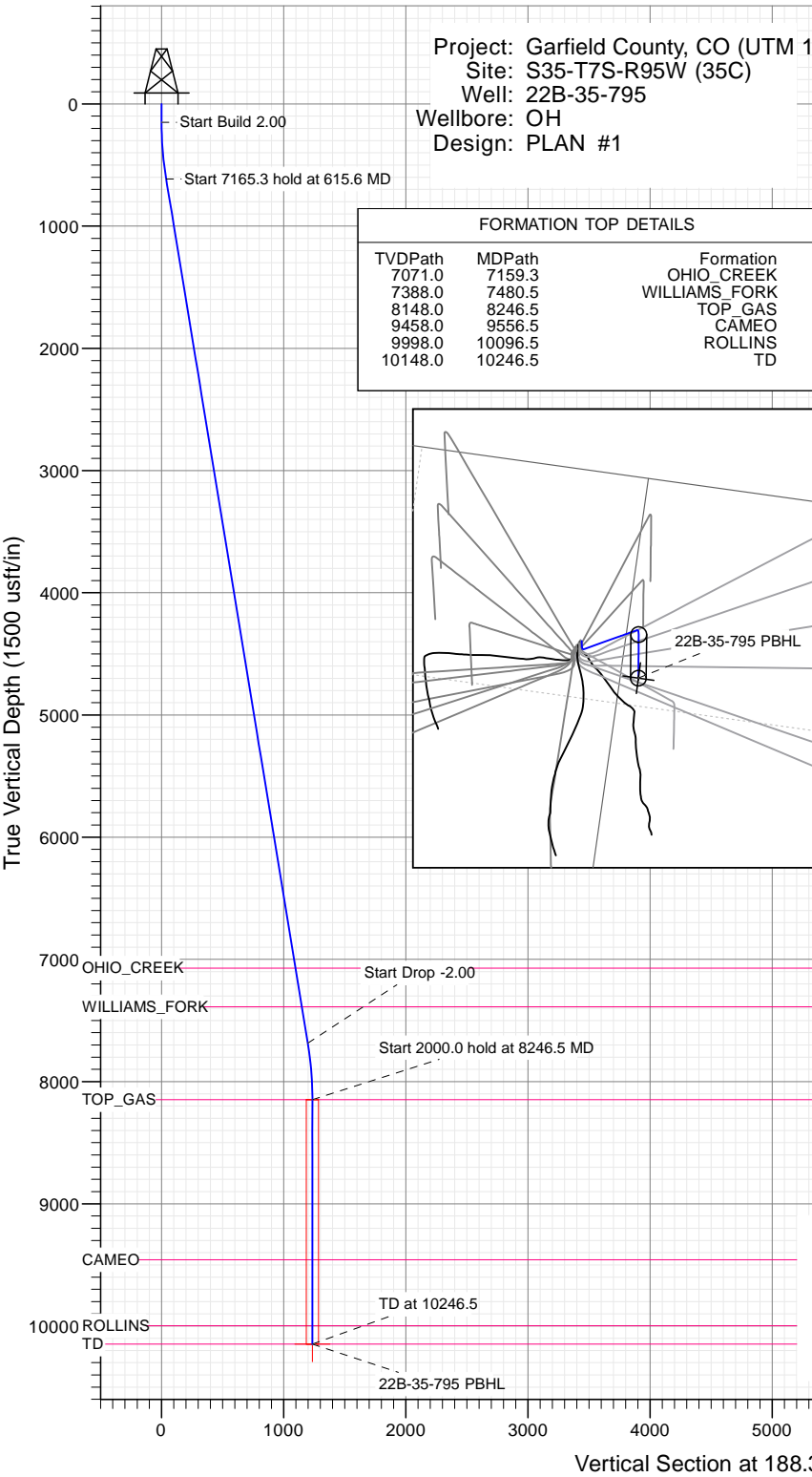




SECTION DETAILS

Sec	MD	Inc	Azi	TVD	+N-S	+E-W	Dleg	TFace	Vsect	Target
1	0.0	0.00	0.00	0.0	0.0	0.0	0.00	0.00	0.0	
2	150.0	0.00	0.00	150.0	0.0	0.0	0.00	0.00	0.0	
3	615.6	9.31	188.37	613.5	-37.3	-5.5	2.00	188.37	37.8	
4	7780.9	9.31	188.37	7684.5	-1184.4	-174.2	0.00	0.00	1197.1	
5	8246.5	0.00	0.00	8148.0	-1221.7	-179.7	2.00	180.00	1234.9	
6	10246.5	0.00	0.00	10148.0	-1221.7	-179.7	0.00	0.00	1234.9	22B-35-795 PBHL

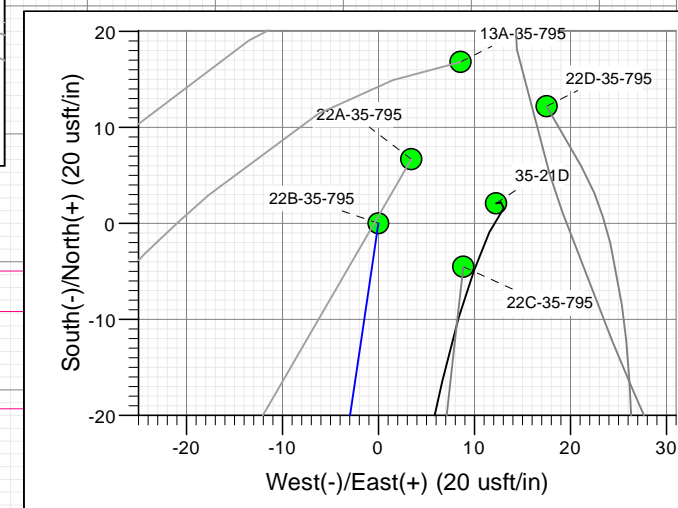
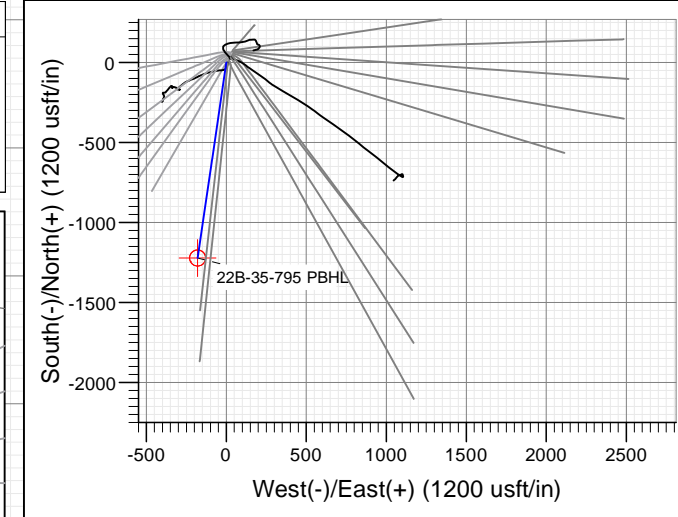


FORMATION TOP DETAILS

TVDPath	MDPath	Formation
7071.0	7159.3	OHIO_CREEK
7388.0	7480.5	WILLIAMS_FORK
8148.0	8246.5	TOP_GAS
9458.0	9556.5	CAMEO
9998.0	10096.5	ROLLINS
10148.0	10246.5	TD

PLAN #1
 22B-35-795
 188.37 LR
 30' KB @ 9236.0usft
 Ground Level @ 9236.0
 NAD 1927 - Western US
 Well 22B-35-795, True North

Type	Target	Target	Target	Target	Target	Target
TD	No Target	No Target	No Target	No Target	No Target	No Target
Name	TD	+N-S	+E-W	Latitude	Longitude	From TVD
22B-35-795 PBHL	10148.0	-1221.7	-179.7	39.395478	-107.966658	0.0



TM
 Azimuths to True North
 Magnetic North: 9.43°

Magnetic Field
 Strength: 51875.1snT
 Dip Angle: 65.62°
 Date: 1/18/2016
 Model: HDGM

CASING DETAILS
 No casing data is available



WELL DETAILS: 22B-35-795

+N-S	+E-W	Northing	Ground Level:	9236.0	Latitude	Longitude
0.0	0.0	14321562.10	Easting	2497589.70	39.398831	-107.966023

Cathedral Energy Services

Planning Report

Database: USA EDM 5000 Multi Users DB	Local Co-ordinate Reference: Well 22B-35-795
Company: Caerus Oil & Gas	TVD Reference: 30' KB @ 9266.0usft
Project: Garfield County, CO (UTM 12N)	MD Reference: 30' KB @ 9266.0usft
Site: S35-T7S-R95W (35C)	North Reference: True
Well: 22B-35-795	Survey Calculation Method: Minimum Curvature
Wellbore: OH	
Design: PLAN #1	

Project Garfield County, CO (UTM 12N)	
Map System: Universal Transverse Mercator (US Survey Feet)	System Datum: Mean Sea Level
Geo Datum: NAD 1927 - Western US	
Map Zone: Zone 12N (114 W to 108 W)	

Site S35-T7S-R95W (35C)		
Site Position:	Northing: 14,321,562.10 usft	Latitude: 39.398831
From: Map	Easting: 2,497,589.70 usft	Longitude: -107.966023
Position Uncertainty: 0.0 usft	Slot Radius: 13-3/16"	Grid Convergence: 1.93 °

Well 22B-35-795			
Well Position	+N/-S 0.0 usft	Northing: 14,321,562.10 usft	Latitude: 39.398831
	+E/-W 0.0 usft	Easting: 2,497,589.70 usft	Longitude: -107.966023
Position Uncertainty	0.0 usft	Wellhead Elevation: 0.0 usft	Ground Level: 9,236.0 usft

Wellbore OH					
Magnetics	Model Name	Sample Date	Declination	Dip Angle	Field Strength
	HDGM	1/18/2016	(°) 9.43	(°) 65.62	(nT) 51,875

Design PLAN #1				
Audit Notes:				
Version:	Phase: PLAN	Tie On Depth: 0.0		
Vertical Section:	Depth From (TVD)	+N/-S	+E/-W	Direction
	(usft)	(usft)	(usft)	(°)
	0.0	0.0	0.0	188.37

Plan Sections										
Measured Depth (usft)	Inclination (°)	Azimuth (°)	Vertical Depth (usft)	+N/-S (usft)	+E/-W (usft)	Dogleg Rate (°/100usft)	Build Rate (°/100usft)	Turn Rate (°/100usft)	TFO (°)	Target
0.0	0.00	0.00	0.0	0.0	0.0	0.00	0.00	0.00	0.00	
150.0	0.00	0.00	150.0	0.0	0.0	0.00	0.00	0.00	0.00	
615.6	9.31	188.37	613.5	-37.3	-5.5	2.00	2.00	0.00	188.37	
7,780.9	9.31	188.37	7,684.5	-1,184.4	-174.2	0.00	0.00	0.00	0.00	
8,246.5	0.00	0.00	8,148.0	-1,221.7	-179.7	2.00	-2.00	0.00	180.00	
10,246.5	0.00	0.00	10,148.0	-1,221.7	-179.7	0.00	0.00	0.00	0.00	22B-35-795 PBHL

Cathedral Energy Services

Planning Report

Database:	USA EDM 5000 Multi Users DB	Local Co-ordinate Reference:	Well 22B-35-795
Company:	Caerus Oil & Gas	TVD Reference:	30' KB @ 9266.0usft
Project:	Garfield County, CO (UTM 12N)	MD Reference:	30' KB @ 9266.0usft
Site:	S35-T7S-R95W (35C)	North Reference:	True
Well:	22B-35-795	Survey Calculation Method:	Minimum Curvature
Wellbore:	OH		
Design:	PLAN #1		

Planned Survey									
Measured Depth (usft)	Inclination (°)	Azimuth (°)	Vertical Depth (usft)	+N/-S (usft)	+E/-W (usft)	Vertical Section (usft)	Dogleg Rate (°/100usft)	Build Rate (°/100u)	Comments / Formations
0.0	0.00	0.00	0.0	0.0	0.0	0.0	0.00	0.00	
100.0	0.00	0.00	100.0	0.0	0.0	0.0	0.00	0.00	
150.0	0.00	0.00	150.0	0.0	0.0	0.0	0.00	0.00	Start Build 2.00
200.0	1.00	188.37	200.0	-0.4	-0.1	0.4	2.00	2.00	
300.0	3.00	188.37	299.9	-3.9	-0.6	3.9	2.00	2.00	
400.0	5.00	188.37	399.7	-10.8	-1.6	10.9	2.00	2.00	
500.0	7.00	188.37	499.1	-21.1	-3.1	21.4	2.00	2.00	
600.0	9.00	188.37	598.2	-34.9	-5.1	35.3	2.00	2.00	
615.6	9.31	188.37	613.5	-37.3	-5.5	37.8	2.00	2.00	Start 7165.3 hold at 615.6 MD
700.0	9.31	188.37	696.8	-50.9	-7.5	51.4	0.00	0.00	
800.0	9.31	188.37	795.5	-66.9	-9.8	67.6	0.00	0.00	
900.0	9.31	188.37	894.2	-82.9	-12.2	83.8	0.00	0.00	
1,000.0	9.31	188.37	992.9	-98.9	-14.5	100.0	0.00	0.00	
1,100.0	9.31	188.37	1,091.6	-114.9	-16.9	116.1	0.00	0.00	
1,200.0	9.31	188.37	1,190.3	-130.9	-19.3	132.3	0.00	0.00	
1,300.0	9.31	188.37	1,288.9	-146.9	-21.6	148.5	0.00	0.00	
1,400.0	9.31	188.37	1,387.6	-162.9	-24.0	164.7	0.00	0.00	
1,500.0	9.31	188.37	1,486.3	-178.9	-26.3	180.9	0.00	0.00	
1,600.0	9.31	188.37	1,585.0	-194.9	-28.7	197.0	0.00	0.00	
1,700.0	9.31	188.37	1,683.7	-210.9	-31.0	213.2	0.00	0.00	
1,800.0	9.31	188.37	1,782.3	-227.0	-33.4	229.4	0.00	0.00	
1,900.0	9.31	188.37	1,881.0	-243.0	-35.7	245.6	0.00	0.00	
2,000.0	9.31	188.37	1,979.7	-259.0	-38.1	261.8	0.00	0.00	
2,100.0	9.31	188.37	2,078.4	-275.0	-40.4	277.9	0.00	0.00	
2,200.0	9.31	188.37	2,177.1	-291.0	-42.8	294.1	0.00	0.00	
2,300.0	9.31	188.37	2,275.8	-307.0	-45.1	310.3	0.00	0.00	
2,400.0	9.31	188.37	2,374.4	-323.0	-47.5	326.5	0.00	0.00	
2,500.0	9.31	188.37	2,473.1	-339.0	-49.9	342.7	0.00	0.00	
2,600.0	9.31	188.37	2,571.8	-355.0	-52.2	358.8	0.00	0.00	
2,700.0	9.31	188.37	2,670.5	-371.0	-54.6	375.0	0.00	0.00	
2,800.0	9.31	188.37	2,769.2	-387.0	-56.9	391.2	0.00	0.00	
2,900.0	9.31	188.37	2,867.9	-403.0	-59.3	407.4	0.00	0.00	
3,000.0	9.31	188.37	2,966.5	-419.1	-61.6	423.6	0.00	0.00	
3,100.0	9.31	188.37	3,065.2	-435.1	-64.0	439.7	0.00	0.00	
3,200.0	9.31	188.37	3,163.9	-451.1	-66.3	455.9	0.00	0.00	
3,300.0	9.31	188.37	3,262.6	-467.1	-68.7	472.1	0.00	0.00	
3,400.0	9.31	188.37	3,361.3	-483.1	-71.0	488.3	0.00	0.00	
3,500.0	9.31	188.37	3,459.9	-499.1	-73.4	504.5	0.00	0.00	
3,600.0	9.31	188.37	3,558.6	-515.1	-75.8	520.6	0.00	0.00	
3,700.0	9.31	188.37	3,657.3	-531.1	-78.1	536.8	0.00	0.00	
3,800.0	9.31	188.37	3,756.0	-547.1	-80.5	553.0	0.00	0.00	
3,900.0	9.31	188.37	3,854.7	-563.1	-82.8	569.2	0.00	0.00	
4,000.0	9.31	188.37	3,953.4	-579.1	-85.2	585.4	0.00	0.00	
4,100.0	9.31	188.37	4,052.0	-595.1	-87.5	601.5	0.00	0.00	
4,200.0	9.31	188.37	4,150.7	-611.2	-89.9	617.7	0.00	0.00	
4,300.0	9.31	188.37	4,249.4	-627.2	-92.2	633.9	0.00	0.00	
4,400.0	9.31	188.37	4,348.1	-643.2	-94.6	650.1	0.00	0.00	
4,500.0	9.31	188.37	4,446.8	-659.2	-96.9	666.3	0.00	0.00	
4,600.0	9.31	188.37	4,545.4	-675.2	-99.3	682.4	0.00	0.00	
4,700.0	9.31	188.37	4,644.1	-691.2	-101.7	698.6	0.00	0.00	
4,800.0	9.31	188.37	4,742.8	-707.2	-104.0	714.8	0.00	0.00	
4,900.0	9.31	188.37	4,841.5	-723.2	-106.4	731.0	0.00	0.00	

Cathedral Energy Services

Planning Report

Database:	USA EDM 5000 Multi Users DB	Local Co-ordinate Reference:	Well 22B-35-795
Company:	Caerus Oil & Gas	TVD Reference:	30' KB @ 9266.0usft
Project:	Garfield County, CO (UTM 12N)	MD Reference:	30' KB @ 9266.0usft
Site:	S35-T7S-R95W (35C)	North Reference:	True
Well:	22B-35-795	Survey Calculation Method:	Minimum Curvature
Wellbore:	OH		
Design:	PLAN #1		

Planned Survey									
Measured Depth (usft)	Inclination (°)	Azimuth (°)	Vertical Depth (usft)	+N/-S (usft)	+E/-W (usft)	Vertical Section (usft)	Dogleg Rate (°/100usft)	Build Rate (°/100u)	Comments / Formations
5,000.0	9.31	188.37	4,940.2	-739.2	-108.7	747.2	0.00	0.00	
5,100.0	9.31	188.37	5,038.9	-755.2	-111.1	763.4	0.00	0.00	
5,200.0	9.31	188.37	5,137.5	-771.2	-113.4	779.5	0.00	0.00	
5,300.0	9.31	188.37	5,236.2	-787.2	-115.8	795.7	0.00	0.00	
5,400.0	9.31	188.37	5,334.9	-803.3	-118.1	811.9	0.00	0.00	
5,500.0	9.31	188.37	5,433.6	-819.3	-120.5	828.1	0.00	0.00	
5,600.0	9.31	188.37	5,532.3	-835.3	-122.8	844.3	0.00	0.00	
5,700.0	9.31	188.37	5,631.0	-851.3	-125.2	860.4	0.00	0.00	
5,800.0	9.31	188.37	5,729.6	-867.3	-127.6	876.6	0.00	0.00	
5,900.0	9.31	188.37	5,828.3	-883.3	-129.9	892.8	0.00	0.00	
6,000.0	9.31	188.37	5,927.0	-899.3	-132.3	909.0	0.00	0.00	
6,100.0	9.31	188.37	6,025.7	-915.3	-134.6	925.2	0.00	0.00	
6,200.0	9.31	188.37	6,124.4	-931.3	-137.0	941.3	0.00	0.00	
6,300.0	9.31	188.37	6,223.0	-947.3	-139.3	957.5	0.00	0.00	
6,400.0	9.31	188.37	6,321.7	-963.3	-141.7	973.7	0.00	0.00	
6,500.0	9.31	188.37	6,420.4	-979.3	-144.0	989.9	0.00	0.00	
6,600.0	9.31	188.37	6,519.1	-995.4	-146.4	1,006.1	0.00	0.00	
6,700.0	9.31	188.37	6,617.8	-1,011.4	-148.7	1,022.2	0.00	0.00	
6,800.0	9.31	188.37	6,716.5	-1,027.4	-151.1	1,038.4	0.00	0.00	
6,900.0	9.31	188.37	6,815.1	-1,043.4	-153.4	1,054.6	0.00	0.00	
7,000.0	9.31	188.37	6,913.8	-1,059.4	-155.8	1,070.8	0.00	0.00	
7,100.0	9.31	188.37	7,012.5	-1,075.4	-158.2	1,087.0	0.00	0.00	
7,159.3	9.31	188.37	7,071.0	-1,084.9	-159.6	1,096.6	0.00	0.00	OHIO_CREEK
7,200.0	9.31	188.37	7,111.2	-1,091.4	-160.5	1,103.1	0.00	0.00	
7,300.0	9.31	188.37	7,209.9	-1,107.4	-162.9	1,119.3	0.00	0.00	
7,400.0	9.31	188.37	7,308.6	-1,123.4	-165.2	1,135.5	0.00	0.00	
7,480.5	9.31	188.37	7,388.0	-1,136.3	-167.1	1,148.5	0.00	0.00	WILLIAMS_FORK
7,500.0	9.31	188.37	7,407.2	-1,139.4	-167.6	1,151.7	0.00	0.00	
7,600.0	9.31	188.37	7,505.9	-1,155.4	-169.9	1,167.9	0.00	0.00	
7,700.0	9.31	188.37	7,604.6	-1,171.4	-172.3	1,184.0	0.00	0.00	
7,780.9	9.31	188.37	7,684.5	-1,184.4	-174.2	1,197.1	0.00	0.00	Start Drop -2.00
7,800.0	8.93	188.37	7,703.3	-1,187.4	-174.6	1,200.2	2.00	-2.00	
7,900.0	6.93	188.37	7,802.3	-1,201.0	-176.6	1,214.0	2.00	-2.00	
8,000.0	4.93	188.37	7,901.8	-1,211.3	-178.1	1,224.3	2.00	-2.00	
8,100.0	2.93	188.37	8,001.6	-1,218.0	-179.1	1,231.1	2.00	-2.00	
8,200.0	0.93	188.37	8,101.5	-1,221.4	-179.6	1,234.5	2.00	-2.00	
8,246.5	0.00	0.00	8,148.0	-1,221.7	-179.7	1,234.9	2.00	-2.00	Start 2000.0 hold at 8246.5 MD - TOP_GAS
8,300.0	0.00	0.00	8,201.5	-1,221.7	-179.7	1,234.9	0.00	0.00	
8,400.0	0.00	0.00	8,301.5	-1,221.7	-179.7	1,234.9	0.00	0.00	
8,500.0	0.00	0.00	8,401.5	-1,221.7	-179.7	1,234.9	0.00	0.00	
8,600.0	0.00	0.00	8,501.5	-1,221.7	-179.7	1,234.9	0.00	0.00	
8,700.0	0.00	0.00	8,601.5	-1,221.7	-179.7	1,234.9	0.00	0.00	
8,800.0	0.00	0.00	8,701.5	-1,221.7	-179.7	1,234.9	0.00	0.00	
8,900.0	0.00	0.00	8,801.5	-1,221.7	-179.7	1,234.9	0.00	0.00	
9,000.0	0.00	0.00	8,901.5	-1,221.7	-179.7	1,234.9	0.00	0.00	
9,100.0	0.00	0.00	9,001.5	-1,221.7	-179.7	1,234.9	0.00	0.00	
9,200.0	0.00	0.00	9,101.5	-1,221.7	-179.7	1,234.9	0.00	0.00	
9,300.0	0.00	0.00	9,201.5	-1,221.7	-179.7	1,234.9	0.00	0.00	
9,400.0	0.00	0.00	9,301.5	-1,221.7	-179.7	1,234.9	0.00	0.00	
9,500.0	0.00	0.00	9,401.5	-1,221.7	-179.7	1,234.9	0.00	0.00	
9,556.5	0.00	0.00	9,458.0	-1,221.7	-179.7	1,234.9	0.00	0.00	CAMEO
9,600.0	0.00	0.00	9,501.5	-1,221.7	-179.7	1,234.9	0.00	0.00	

Cathedral Energy Services

Planning Report

Database:	USA EDM 5000 Multi Users DB	Local Co-ordinate Reference:	Well 22B-35-795
Company:	Caerus Oil & Gas	TVD Reference:	30' KB @ 9266.0usft
Project:	Garfield County, CO (UTM 12N)	MD Reference:	30' KB @ 9266.0usft
Site:	S35-T7S-R95W (35C)	North Reference:	True
Well:	22B-35-795	Survey Calculation Method:	Minimum Curvature
Wellbore:	OH		
Design:	PLAN #1		

Planned Survey									
Measured Depth (usft)	Inclination (°)	Azimuth (°)	Vertical Depth (usft)	+N/-S (usft)	+E/-W (usft)	Vertical Section (usft)	Dogleg Rate (°/100usft)	Build Rate (°/100u)	Comments / Formations
9,700.0	0.00	0.00	9,601.5	-1,221.7	-179.7	1,234.9	0.00	0.00	
9,800.0	0.00	0.00	9,701.5	-1,221.7	-179.7	1,234.9	0.00	0.00	
9,900.0	0.00	0.00	9,801.5	-1,221.7	-179.7	1,234.9	0.00	0.00	
10,000.0	0.00	0.00	9,901.5	-1,221.7	-179.7	1,234.9	0.00	0.00	
10,096.5	0.00	0.00	9,998.0	-1,221.7	-179.7	1,234.9	0.00	0.00	ROLLINS
10,100.0	0.00	0.00	10,001.5	-1,221.7	-179.7	1,234.9	0.00	0.00	
10,200.0	0.00	0.00	10,101.5	-1,221.7	-179.7	1,234.9	0.00	0.00	
10,246.5	0.00	0.00	10,148.0	-1,221.7	-179.7	1,234.9	0.00	0.00	TD at 10246.5 - TD

Targets											
Target Name	- hit/miss target	- Shape	Dip Angle (°)	Dip Dir. (°)	TVD (usft)	+N/-S (usft)	+E/-W (usft)	Northing (usft)	Easting (usft)	Latitude	Longitude
22B-35-795 PBHL			0.00	0.00	10,148.0	-1,221.7	-179.7	14,320,335.00	2,497,451.20	39.395478	-107.966658
- plan hits target center											
- Circle (radius 50.0)											

Formations						
Measured Depth (usft)	Vertical Depth (usft)	Name	Lithology	Dip (°)	Dip Direction (°)	
7,159.3	7,071.0	OHIO_CREEK				
7,480.5	7,388.0	WILLIAMS_FORK				
8,246.5	8,148.0	TOP_GAS				
9,556.5	9,458.0	CAMEO		0.00		
10,096.5	9,998.0	ROLLINS				
10,246.5	10,148.0	TD				

Plan Annotations					
Measured Depth (usft)	Vertical Depth (usft)	Local Coordinates		Comment	
		+N/-S (usft)	+E/-W (usft)		
150.0	150.0	0.0	0.0	Start Build 2.00	
615.6	613.5	-37.3	-5.5	Start 7165.3 hold at 615.6 MD	
7,780.9	7,684.5	-1,184.4	-174.2	Start Drop -2.00	
8,246.5	8,148.0	-1,221.7	-179.7	Start 2000.0 hold at 8246.5 MD	
10,246.5	10,148.0	-1,221.7	-179.7	TD at 10246.5	