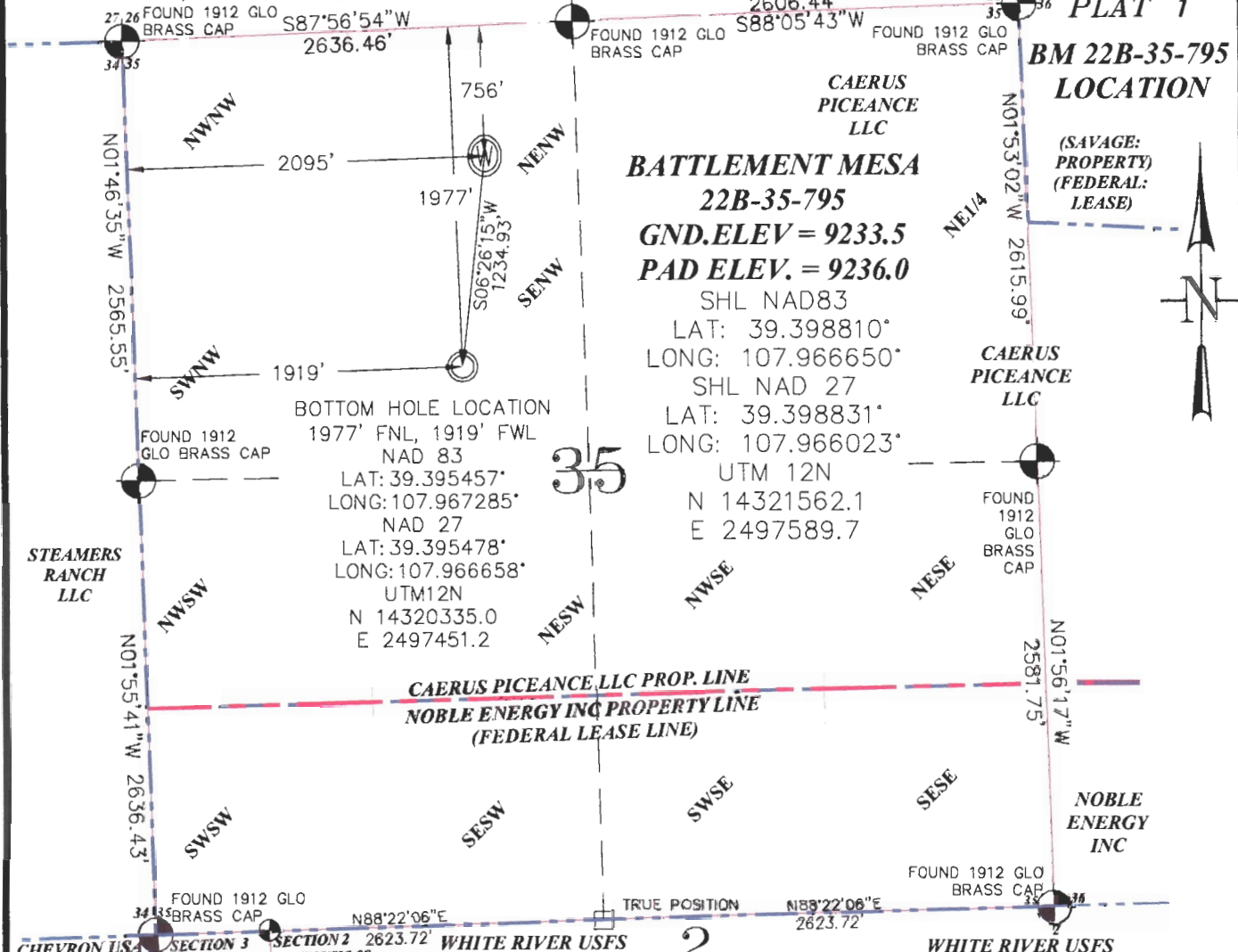


SEC. 35, T. 7 S., R. 95 W. OF THE 6TH P.M.



BATTEMENT MESA
22B-35-795
GND.ELEV = 9233.5
PAD ELEV. = 9236.0

SHL NAD83
 LAT: 39.398810°
 LONG: 107.966650°
 SHL NAD 27
 LAT: 39.398831°
 LONG: 107.966023°
 UTM 12N
 N 14321562.1
 E 2497589.7

BOTTOM HOLE LOCATION
 1977' FNL, 1919' FWL
 NAD 83
 LAT: 39.395457°
 LONG: 107.967285°
 NAD 27
 LAT: 39.395478°
 LONG: 107.966658°
 UTM12N
 N 14320335.0
 E 2497451.2

CAERUS PICEANCE, LLC PROP. LINE
 NOBLE ENERGY INC PROPERTY LINE
 (FEDERAL LEASE LINE)

THIS WELL LOCATION PLAT WAS PREPARED FOR CAERUS PICEANCE LLC TO LOCATE THE BATTEMENT MESA 22B-35-795 WELL, 756 FEET FROM THE NORTH LINE OF SECTION 35 AND 2095 FEET FROM THE WEST LINE OF SECTION 35, SITUATED IN THE NENW OF SECTION 35, T. 7 S., R. 95 W. OF THE 6TH P.M. GARFIELD COUNTY, COLORADO.

SURVEYOR'S CERTIFICATE

I, George R. Bauer: a Professional Land Surveyor in the State of Colorado do hereby certify that this Survey was made under my direct supervision, and that this Plat represents said Survey.

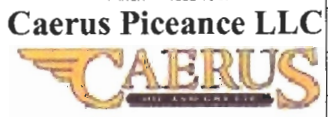


REFERENCE NOTES

- 1) T. 7 S., R. 95 W., 6TH P.M. GLO PLAT.
- 2) U.S.G.S. QUAD: PARACHUTE, CO
- 3) ELEVATIONS BASED ON N.A.V.D. 1988 LIDAR BASED CONTROL PT CP MON 8
- 4) LATITUDES AND LONGITUDES ARE BASED ON NAD 83, COLORADO CENTRAL ZONE.
- 5) GPS OPERATOR ROBERT WOOD, OBSERVED A PDOF OF 1.9.
- 6) ALL GPS OBSERVATIONS ARE IN COMPLIANCE WITH COGCC RULE NO. 215.
- 7) SURFACE AND BOTTOM HOLE LOCATIONS ARE MEASURED 90° FROM SECTION LINES.

-LEGEND-

- FIELD SURVEYED SECTION CORNER LOCATIONS
- FIELD SURVEYED WELL SHL LOCATION
- CALCULATED BOTTOM HOLE LOCATION



WELL LOCATION PLAT

		CONSTRUCTION SURVEYS, INC. 0012 SUNRISE BLYD. SILT, CO 81652 (970)876-5753	
SURVEY BY: REW 12/10/15		PDOP: 1.9	
DRAWN BY: REW 02/09/16		DWG: CAERUS\BM35C-795PLAT_1	
REVISED:			