

SEC. 35, T. 7 S., R. 95 W. OF THE 6TH P.M.

PLAT 1
BM 22D-35-795
LOCATION

(SAVAGE:
PROPERTY)
(FEDERAL:
LEASE)



BATTEMENT MESA

22D-35-795

GND.ELEV = 9237.0

PAD ELEV. = 9236.0

SHL NAD83

LAT: 39.398843°

LONG: 107.966588°

SHL NAD 27

LAT: 39.398865°

LONG: 107.965961°

UTM 12N

N 14321574.9

E 2497606.8

CAERUS
PICEANCE
LLC

FOUND 1912 GLO
BRASS CAP

NOBLE
ENERGY
INC

FOUND 1912 GLO
BRASS CAP

TRUE POSITION

N88°22'06"E
2623.72'

WHITE RIVER USFS

WHITE RIVER USFS

STEAMERS
RANCH
LLC

FOUND 1912
GLO BRASS CAP

BOTTOM HOLE LOCATION

2591' FSL, 1934' FWL

NAD 83

LAT: 39.393685°

LONG: 107.967240°

NAD 27

LAT: 39.393706°

LONG: 107.966613°

UTM12N

N 14319690.0

E 2497485.6

1934'

2591'

CAERUS PICEANCE LLC PROP. LINE
NOBLE ENERGY INC PROPERTY LINE
(FEDERAL LEASE LINE)

CHEVRON USA
INC

SECTION 3
TOWNSHIP 85° TOWNSHIP 85

SECTION 2

WHITE RIVER USFS

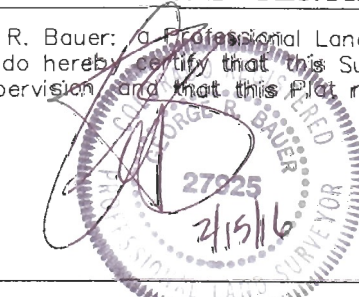
2

THIS WELL LOCATION PLAT WAS PREPARED FOR CAERUS PICEANCE LLC TO LOCATE THE
BATTEMENT MESA 22D-35-795 WELL, 744 FEET FROM THE NORTH LINE OF SECTION 35
AND 2112 FEET FROM THE WEST LINE OF SECTION 35, SITUATED IN THE NENW OF SECTION
35, T. 7 S., R. 95 W. OF THE 6TH P.M. GARFIELD COUNTY, COLORADO.

REFERENCE NOTES

- 1) T. 7 S., R. 95 W., 6TH P.M. GLO PLAT.
- 2) U.S.G.S. QUAD: PARACHUTE, CO
- 3) ELEVATIONS BASED ON N.A.V.D. 1988 LIDAR
BASED CONTROL PT CP MON 8
- 4) LATITUDES AND LONGITUDES ARE BASED ON
NAD 83, COLORADO CENTRAL ZONE.
- 5) GPS OPERATOR ROBERT WOOD, OBSERVED
A PDOP OF 1.9.
- 6) ALL GPS OBSERVATIONS ARE IN COMPLIANCE
WITH COGCC RULE NO. 215.
- 7) SURFACE AND BOTTOM HOLE LOCATIONS
ARE MEASURED 90° FROM SECTION LINES.

I, George R. Bauer, a Professional Land Surveyor in the State of
Colorado do hereby certify that this Survey was made under my
direct supervision and that this Plat represents said Survey.



-LEGEND-



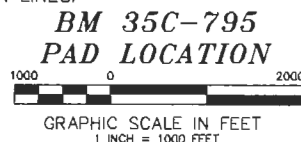
FIELD SURVEYED SECTION
CORNER LOCATIONS



FIELD SURVEYED WELL
SHL LOCATION



CALCULATED BOTTOM
HOLE LOCATION



Caerus Piceance LLC



WELL LOCATION PLAT

CONSTRUCTION SURVEYS, INC.
2012 SUNRISE BLVD. SILT, CO
81652 (970)816-5153

SURVEY BY:REW 12/10/15

PDOP: 1.9

DRAWN BY:REW 02/10/16

DWG:CAERUS\BM35C-795PLAT_1

REVISED: