

SEC. 35, T. 7 S., R. 95 W. OF THE 6TH P.M.

PLAT 1

**BM 12B-35-795
LOCATION**

(SAVAGE:
PROPERTY)
(FEDERAL:
LEASE)

**BATLEMENT MESA
12B-35-795**

**GND.ELEV = 9235.1
PAD ELEV. = 9236.0**

SHL NAD83

LAT: 39.398942°

LONG: 107.966562°

SHL NAD 27

LAT: 39.398963°

LONG: 107.965935°

UTM 12N

N 14321611.1

E 2497612.9

**CAERUS
PICEANCE
LLC**

FOUND 1912
GLO
BRASS
CAP

**NOBLE
ENERGY
INC**

FOUND 1912 GLO
BRASS CAP

WHITE RIVER USFS

WHITE RIVER USFS

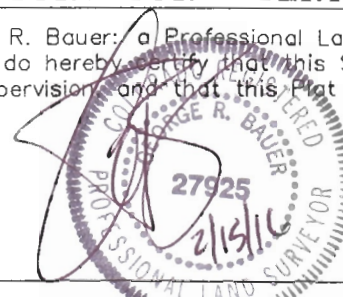
THIS WELL LOCATION PLAT WAS PREPARED FOR CAERUS PICEANCE LLC TO LOCATE THE **BATLEMENT MESA 12B-35-795 WELL**, 708 FEET FROM THE NORTH LINE OF SECTION 35 AND 2120 FEET FROM THE WEST LINE OF SECTION 35, SITUATED IN THE NENW OF SECTION 35, T. 7 S., R. 95 W. OF THE 6TH P.M. GARFIELD COUNTY, COLORADO.

SURVEYOR'S CERTIFICATE

REFERENCE NOTES

- 1) T. 7 S., R. 95 W., 6TH P.M. GLO PLAT.
- 2) U.S.G.S. QUAD: PARACHUTE, CO
- 3) ELEVATIONS BASED ON N.A.V.D. 1988 LIDAR BASED CONTROL PT CP MON 8
- 4) LATITUDES AND LONGITUDES ARE BASED ON NAD 83, COLORADO CENTRAL ZONE.
- 5) GPS OPERATOR ROBERT WOOD, OBSERVED A PDOP OF 1.9.
- 6) ALL GPS OBSERVATIONS ARE IN COMPLIANCE WITH COGCC RULE NO. 215.
- 7) SURFACE AND BOTTOM HOLE LOCATIONS ARE MEASURED 90° FROM SECTION LINES.

I, George R. Bauer, a Professional Land Surveyor in the State of Colorado do hereby certify that this Survey was made under my direct supervision and that this Plat represents said Survey.



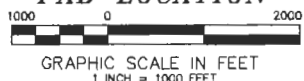
-LEGEND-

FIELD SURVEYED SECTION
CORNER LOCATIONS

FIELD SURVEYED WELL
SHL LOCATION

CALCULATED BOTTOM
HOLE LOCATION

**BM 35C-795
PAD LOCATION**



Caerus Piceance LLC



WELL LOCATION PLAT

CONSTRUCTION SURVEYS, INC.
0012 SUNRISE BLVD. SILT, CO
81652 (970)876-5753

SURVEY BY:REW 12/10/15

PDOP: 1.9

DRAWN BY:REW 02/09/16

DWG: CAERUS\BM35C-795PLAT_1

REVISED: