



Western Water & Land, Inc.

February 17, 2016

Mr. Michael Shoemaker
WPX Environmental Specialist Senior Staff
WPX Energy Rocky Mountain LLC
1058 County Road 215
Parachute, Colorado 81635

RE: Status Report: Drill Pads KP 22-17, KP 24-17& KP 34-18 COGCC Rule 317B Post DCPS Operations Water Quality Sampling, September/October 2015

Dear Mr. Shoemaker,

Western Water and Land, Inc (WWL) conducted field reconnaissance in support of surface water sampling for the WPX Drilling, Completion, Production, and Storage (DCPS) Operations locations in accordance with COGCC Rule 317B. DCPS Operations Drill Pads KP 22-17 (SE¹/₄, NW¹/₄) and KP 24-17 (SE¹/₄, SW¹/₄) are located in Section 17, Township 6 South, Range 91 West, 6th P.M., and KP 34-18 (SW¹/₄, SE¹/₄) is located in Section 18. Drill Pads KP 22-17, KP 24-17 and KP 34-18 fall within the Rule 317B 0.5-mile buffer zone for the Silt Surface Water Supply Area (SSWSA). This status report addresses field activities and the sampling location status during the sampling event for the September/October 2015 DCPS Operations.

Workover operations were completed for the following wells:

Pad Name	Well Name	API	Start Date	End Date
KP 22-17	Jolley 17-26D	05-045-17266	10/21/2015	10/26/2015
KP 24-17	KP 314-17	05-045-17679	10/20/2015	10/20/2015
KP 34-18	Kokopelli Fed 18-215D	05-045-16266	10/8/2015	10/13/2015

Previously established sampling locations for the SSWSA were provided to WWL by WPX. The sampling locations were established by HRL Compliance Solutions, Inc. (HCSI). Sampling locations downgradient of the referenced WPX DCPS Operations locations are shown in Figure 1. Sampling location KP 3 (COGCC Facility ID 752549) is the nearest downgradient sampling location to the referenced WPX DCPS Operations locations and was therefore identified as the preferred sampling location.

Field Activities and Sampling Location Status

Sampling location KP 3 was visited by WWL personnel on November 5, 2015. This sampling location resides in an ephemeral drainage immediately downgradient of a culvert under the access road. Small amounts of standing water were present in the drainage and a slow trickle of water was flowing through the culvert but was an insufficient amount for the collection of a water quality sample. The next downgradient sampling location, KP 2 (COGCC Facility ID 752548), was not visited because WPX does not have property owner consent to access this location. Photographs from the field activities are

Mr. Michael Shoemaker
February 17, 2016
Page 2

included in Attachment A. As a result of these events, no samples were collected during the September/October 2015 DCPS Operations sampling event.

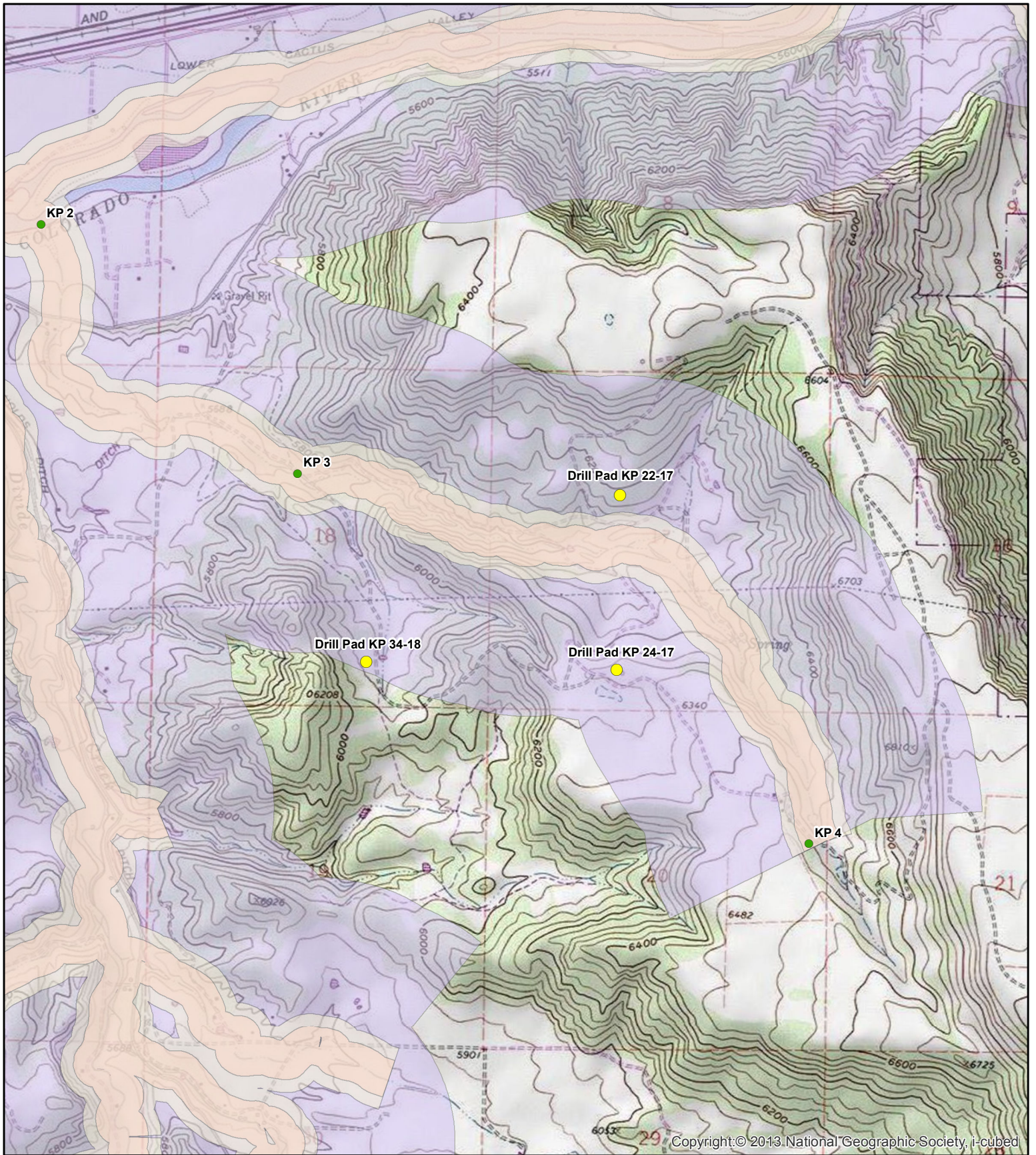
If you have any questions or concerns, please contact me at (970) 242-0170.

Sincerely,

A handwritten signature in black ink that reads "Bruce D. Smith". The signature is written in a cursive style with a large initial "B" and a distinct "D" and "S".

Bruce D. Smith
Principal Hydrogeologist
WESTERN WATER & LAND, INC.

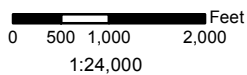
Attachments



Copyright © 2013, National Geographic Society, i-cubed

Legend

- 300ft Buffer
- 500ft Buffer
- Halfmile Buffer
- Established Sampling Sites



**Figure 1: September/October 2015 DCPS Operations
Rule 317B Sampling Evaluation
S 17 & 18, T6S, R91W, 6 PM**

Garfield County, Colorado
WPX Energy Rocky Mountain LLC
Basemap Source: Esri ArcGIS Online



Western Water & Land, Inc.
Applications in Earth Science

ATTACHMENT A

Photographs



Photo 1. Sampling location KP 3. (November 5, 2015)



Photo 2. Drainage downstream of sampling location KP 3. (November 5, 2015)