

# HALLIBURTON

iCem<sup>®</sup> Service

## **PICEANCE ENERGY LLC - EBUS**

**For: Matt Settles**

Date: Thursday, December 10, 2015

### **Piceance Federal 28-09E Surface**

**API# 05-077-10255-00**

PICEANCE FEDERAL 28-09E

Job Date: Wednesday, December 09, 2015

Sincerely,

**Grand Junction Cement Engineering**

## 1.0 Real-Time Job Summary

## 1.1 Job Event Log

Type	Seq. No.	Graph Label	Date	Time	Source	DH Density (ppg)	Comb Pump Rate (bbl/min)	PS Pump Press (psi)	Pump Stg Tot (bbl)	Comments
Event	1	Call Out	12/9/2015	18:30:00	USER					HES CREW CALLED OUT
Event	2	Pre-Convoy Safety Meeting	12/9/2015	20:00:00	USER					JOURNEY CREATED ALL HES INVOLVED IN SAFETY MEETING
Event	3	Crew Leave Yard	12/9/2015	20:15:00	USER					1-F-550 PICKUP, 1-ELITE PUMP TRUCK, 1-660 BULK TRUCK
Event	4	Arrive At Loc	12/9/2015	22:00:00	USER					HES ARRIVED 2 HOURS EARLY
Event	5	Assessment Of Location Safety Meeting	12/9/2015	22:15:00	USER					RIG WAS STARTING TO RUN CASING, HES REP SPOKE WITH COMPANY REP AND HELD SAFETY MEETING WITH HES CREW
Event	6	Pre-Rig Up Safety Meeting	12/9/2015	22:30:00	USER					ALL CREW IN ATTENDANCE
Event	7	Rig-Up Equipment	12/9/2015	22:35:00	USER					RIG UP IRON TO THE STAND PIPE, WATER HOSES TO UPRIGHT AND RIG TANK, BULK TRUCK TO PUMP TRUCK
Event	8	Rig-Up Completed	12/9/2015	23:30:00	USER					COMPLETED
Event	9	Pre-Job Safety Meeting	12/10/2015	01:45:00	USER					ALL HES CREW AND RIG CREW TO REVIEW AND SIGN JSA AND REVIEW JOB PROCEDURES PRIOR TO STARTING JOB
Event	10	Start Job	12/10/2015	01:58:34	USER					TD: 1603FT TP: 1593FT SJ: 45.72FT OH: 11" CSG: 8.625 24#J-55 MUD WT: 9.4 VISC: 35 WTR TEMP: 41.5 DEGREES, CHLORIDES: 0, PH: 7
Event	11	Fill Lines	12/10/2015	02:00:13	COM7	8.48	2	43	2	FILL LINES TO PRESSURE TEST
Event	12	Test Lines	12/10/2015	02:01:53	COM7	8.32		3670		PRESSURE TEST LINES TO 3500 PSI, PRESSURE TEST OK
Event	13	Fresh Water Spacer	12/10/2015	02:05:33	COM7	8.30	4	125	40	40 BBL FRESH WATER SPACER
Event	14	Drop Bottom Plug	12/10/2015	02:05:52	COM7					BOTTOM PLUG AWAY NO PROBLEM

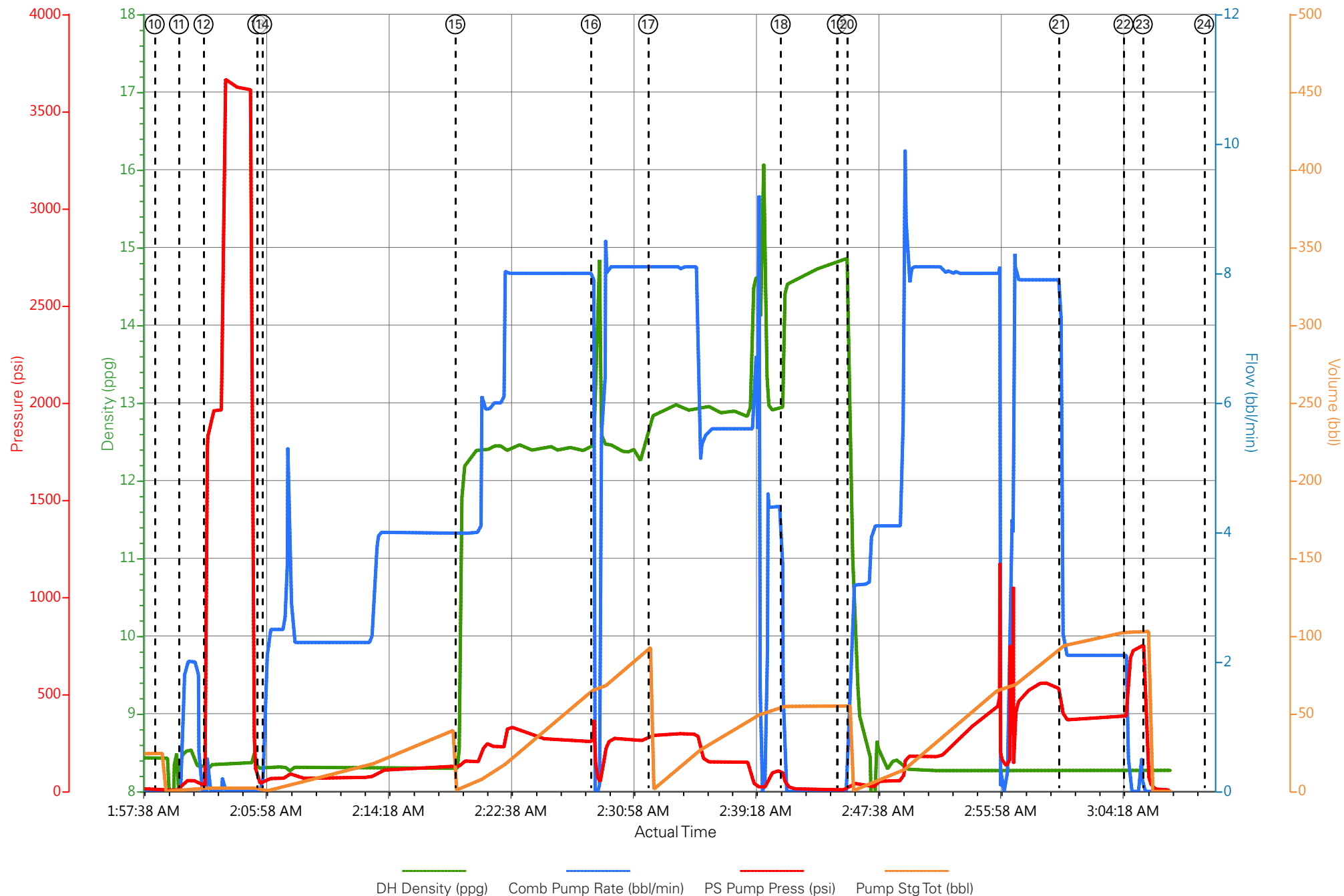
5

Event	15	Pump Lead Cement	12/10/2015	02:19:01	COM7	12.3	8	285	84.1	192SKS (84.1BBLs) OF VARICEM CEMENT 12.3PPG 2.46YIELD 14.17GAL/SK WEIGHT OF CEMENT VERIFIED VIA MUD SCALES THROUGHOUT LEAD CEMENT
Event	16	Other	12/10/2015	02:28:15	USER					HES HIT KICKOUTS ON PUMP TRUCK WHEN BOTTOM PLUG LANDED
Event	17	Pump Tail Cement	12/10/2015	02:32:09	COM7	12.8	8	300	47.4	122SKS (47.4BBLs) OF VARICEM CEMENT 12.8PPG 2.18YIELD 12.11GAL/SK WEIGHT OF CEMENT VERIFIED VIA MUD SCALES THROUGHOUT TAIL CEMENT
Event	18	Shutdown	12/10/2015	02:41:10	USER					SHUTDOWN END OF CEMENT, HES WASHED UP ON TOP OF PLUG, READY TANKS FOR DISPLACEMENT
Event	19	Drop Top Plug	12/10/2015	02:45:00	COM7					TOP PLUG AWAY NO PROBLEMS
Event	20	Pump Displacement	12/10/2015	02:45:41	COM7	8.45	8	560	88.4	FRESH WATER DISPLACEMENT
Event	21	Slow Rate	12/10/2015	03:00:07	USER	8.34	2	365	10	SLOW RATE TO BUMP THE PLUG
Event	22	Bump Plug	12/10/2015	03:04:30	USER	8.34	2	396	98.4	BUMPED PLUG AT 396 PSI, TOOK TO 740 PSI
Event	23	Check Floats	12/10/2015	03:05:49	USER			740		FLOATS HELD .5 BBL BACK TO TANKS, 35 BBLs OF CEMENT TO SURFACE, RIG USED 40 POUNDS OF SUGAR
Event	24	End Job	12/10/2015	03:10:00	USER					THANK YOU FOR CHOOSING HALLIBURTON CEMENT CARL KUKUS AND CREW
Event	25	Pre-Rig Down Safety Meeting	12/10/2015	03:15:00	USER					JSA REVIEWED, ALL HES IN ATTENDANCE
Event	26	Rig-Down Equipment	12/10/2015	03:23:51	USER					WASH UP AND BLOW DOWN PUMP TRUCK, RIG DOWN ALL LINES AND EQUIPMENT
Event	27	Rig-Down Completed	12/10/2015	04:30:00	USER					COMPLETED
Event	28	Pre-Convoy Safety Meeting	12/10/2015	04:35:00	USER					JOURNEY CREATED ALL HES IN ATTENDANCE

Event	29	Crew Leave Location	12/10/2015	04:40:00	USER	1-F-550 PICKUP, 1-ELITE PUMP TRUCK, 1-660 BULK TRUCK
-------	----	---------------------	------------	----------	------	--

---

# PICEANCE-PICEANCE FEDERAL 28-09E-SURFACE



- |                             |                   |   |                    |                          |              |                      |            |
|-----------------------------|-------------------|---|--------------------|--------------------------|--------------|----------------------|------------|
| ① Call Out                  | ③ Crew Leave Yard | ⑤ Assessment Of Location Safety Meeting | ⑦ Rig-Up Equipment | ⑨ Pre-Job Safety Meeting | ⑪ Fill Lines | ⑬ Fresh Water Spacer | ⑮ Pump Lea |
| ② Pre-Convoy Safety Meeting | ④ Arrive At Loc   | ⑥ Pre-Rig Up Safety Meeting             | ⑧ Rig-Up Completed | ⑩ Start Job              | ⑫ Test Lines | ⑭ Drop Bottom Plug   | ⑯ Other    |

# PICEANCE-PICEANCE FEDERAL 28-09E-SURFACE

