

SEC. 35, T. 7 S., R. 95 W. OF THE 6TH P.M.

PLAT 1

BM 12C-35-795
LOCATION

(SAVAGE:
PROPERTY)
(FEDERAL:
LEASE)

BATTEMENT MESA

12C-35-795

GND.ELEV = 9235.3

PAD ELEV. = 9236.0

SHL NAD83

LAT: 39.398923°

LONG: 107.966574°

SHL NAD 27

LAT: 39.398945°

LONG: 107.965947°

UTM 12N

N 14321604.3

E 2497609.7

BOTTOM HOLE LOCATION

2098' FNL, 616' FWL

NAD 83

LAT: 39.395117°

LONG: 107.971893°

NAD 27

LAT: 39.395139°

LONG: 107.971267°

UTM12N

N 14320167.5

E 2496153.1

CAERUS PICEANCE LLC PROP. LINE

NOBLE ENERGY INC PROPERTY LINE
(FEDERAL LEASE LINE)

STEAMERS
RANCH
LLC

CAERUS
PICEANCE
LLC

NOBLE
ENERGY
INC

CHEVRON USA INC SECTION 3 TOWNSHIP 8S SECTION 2 TOWNSHIP 8S WHITE RIVER USFS

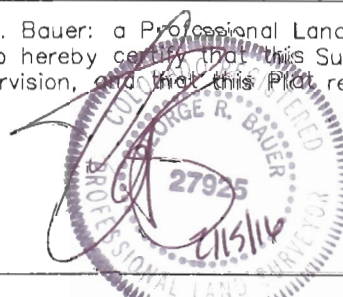
THIS WELL LOCATION PLAT WAS PREPARED FOR CAERUS PICEANCE LLC TO LOCATE THE
BATTEMENT MESA 12C-35-795 WELL, 715 FEET FROM THE NORTH LINE OF SECTION 35
AND 2116 FEET FROM THE WEST LINE OF SECTION 35, SITUATED IN THE NENW OF SECTION
35, T. 7 S., R. 95 W. OF THE 6TH P.M. GARFIELD COUNTY, COLORADO.

SURVEYOR'S CERTIFICATE

REFERENCE NOTES

- 1) T. 7 S., R. 95 W., 6TH P.M. GLO PLAT.
- 2) U.S.G.S. QUAD: PARACHUTE, CO
- 3) ELEVATIONS BASED ON N.A.V.D. 1988 LIDAR
BASED CONTROL PT CP MON 8
- 4) LATITUDES AND LONGITUDES ARE BASED ON
NAD 83, COLORADO CENTRAL ZONE.
- 5) GPS OPERATOR ROBERT WOOD, OBSERVED
A PDOP OF 1.9.
- 6) ALL GPS OBSERVATIONS ARE IN COMPLIANCE
WITH COGCC RULE NO. 215.
- 7) SURFACE AND BOTTOM HOLE LOCATIONS
ARE MEASURED 90° FROM SECTION LINES.

I, George R. Bauer, a Professional Land Surveyor in the State of
Colorado do hereby certify that this Survey was made under my
direct supervision, and that this Plat represents said Survey.



-LEGEND-

FIELD SURVEYED SECTION
CORNER LOCATIONS

FIELD SURVEYED WELL
SHL LOCATION

CALCULATED BOTTOM
HOLE LOCATION

BM 35C-795
PAD LOCATION

1000 0 2000

GRAPHIC SCALE IN FEET
1 INCH = 1000 FEET

Caerus Piceance LLC
CAERUS

WELL LOCATION PLAT

CONSTRUCTION SURVEYS, INC.
0012 SUNRISE BLVD. SILT, CO
81652 (970)876-5753



SURVEY BY:REW 12/10/15

PDOP: 1.9

DRAWN BY:REW 02/09/16

DWG: CAERUS\BM35C-795PLAT_1

REVISED: