

# HALLIBURTON

iCem<sup>®</sup> Service

## **PICEANCE ENERGY LLC**

**For: Roger Foster**

Date: Wednesday, November 04, 2015

## **Piceance Fed 28-13E**

**API/UWI #: 05-077-10249-00**

PICEANCE 28-13E

Case 1

Job Date: Tuesday, November 03, 2015

Sincerely,  
Ed Deussen

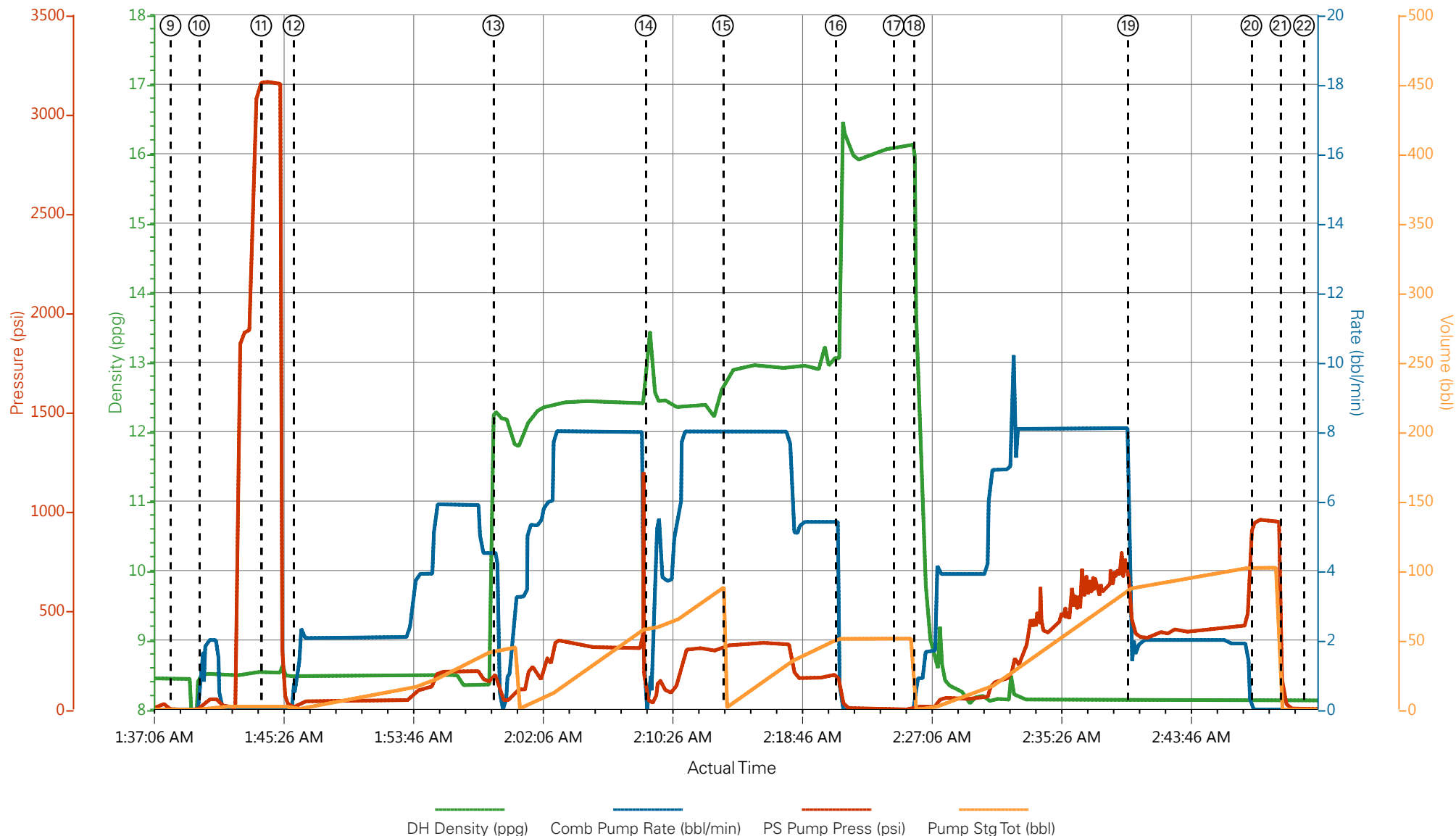
## 1.0 Real-Time Job Summary

## 1.1 Job Event Log

Type	Seq. No.	Graph Label	Date	Time	Source	DH Density (ppg)	Comb Pump Rate (bbl/min)	PS Pump Press (psi)	Pump Stg Tot (bbl)	Comments
Event	1	Call Out	11/3/2015	14:00:00	USER					O/L time 2000
Event	2	Pre-Convoy Safety Meeting	11/3/2015	15:45:00	USER					
Event	3	Crew Leave Yard	11/3/2015	16:00:00	USER					1 Elite, 1 660, 1 pickup
Event	4	Arrive At Loc	11/3/2015	18:00:00	USER					Rig still running casing
Event	5	Assessment Of Location Safety Meeting	11/3/2015	18:15:00	USER					JSA completed - Company rep offered/received SDS - Mix water ph 7.5, CI 0, temp 48 degrees
Event	6	Pre-Rig Up Safety Meeting	11/3/2015	18:30:00	USER					
Event	7	Rig-Up Equipment	11/3/2015	18:45:00	USER					Hard line to standpipe, water hose to upright, bulk hose to 660
Event	8	Pre-Job Safety Meeting	11/4/2015	01:20:00	USER					All HES personnel, rig crew, and company rep - JSA completed
Event	9	Start Job	11/4/2015	01:38:22	USER					TD 1604', TP 1594', SJ 43.95', Mud 8.7 visc 29, 11" OH, 8 5/8" 24# J-55 csg
Event	10	Prime Lines	11/4/2015	01:40:11	COM5	8.33	2.0	66	2.0	Fresh water
Event	11	Test Lines	11/4/2015	01:44:11	COM5			3178		Pressure held well
Event	12	Pump H2O Spacer	11/4/2015	01:46:16	COM5	8.33	6.0	230	40.0	Fresh water
Event	13	Pump Lead Cement	11/4/2015	01:59:06	COM5	12.3	8.0	341	84.1	192 sks, 12.3 ppg, 2.46 yield, 14,17 gal/sk, VariCem GJ5
Event	14	Bottom Plug Ruptured	11/4/2015	02:08:54	USER					
Event	15	Pump Tail Cement	11/4/2015	02:13:52	COM5	12.8	8.0	362	46.6	120 sks, 12.8 ppg, 2.18 yield, 12.11 gal/sk, VariCem GJ5
Event	16	Shutdown	11/4/2015	02:21:07	USER					Wash up on top of plug
Event	17	Drop Top Plug	11/4/2015	02:24:51	USER					Plug launched
Event	18	Pump Displacement	11/4/2015	02:26:09	COM5	8.33	8.0	720	98.6	Fresh water

Event	19	Slow Rate	11/4/2015	02:39:55	USER	8.33	2.0	385	10.0	Good returns throughout job
Event	20	Bump Plug	11/4/2015	02:47:51	COM5			434		20 bbls cement to surface
Event	21	Check Floats	11/4/2015	02:49:42	USER			960		Floats held – ½ bbl flowback
Event	22	End Job	11/4/2015	02:51:14	USER					20 lbs sugar used
Event	23	Pre-Rig Down Safety Meeting	11/4/2015	03:00:00	USER					
Event	24	Rig-Down Equipment	11/4/2015	03:15:00	USER					
Event	25	Pre-Convoy Safety Meeting	11/4/2015	04:15:00	USER					
Event	26	Crew Leave Location	11/4/2015	04:30:00	USER					Thank you for using Halliburton - Ed Deussen and crew

# PICEANCE - Fed 28-13E - 8 5/8" Surface



- |   |                          |                        |                                |                              |
|---|--------------------------|------------------------|--------------------------------|------------------------------|
| ① Call Out                              | ⑦ Rig-Up Equipment       | ⑬ Pump Lead Cement     | ⑲ Slow Rate                    | 25 Pre-Convoy Safety Meeting |
| ② Pre-Convoy Safety Meeting             | ⑧ Pre-Job Safety Meeting | ⑭ Bottom Plug Ruptured | 20 Bump Plug                   | 26 Crew Leave Location       |
| ③ Crew Leave Yard                       | ⑨ Start Job              | ⑮ Pump Tail Cement     | 21 Check Floats                |                              |
| ④ Arrive At Loc                         | ⑩ Prime Lines            | ⑯ Shutdown             | 22 End Job                     |                              |
| ⑤ Assessment Of Location Safety Meeting | ⑪ Test Lines             | ⑰ Drop Top Plug        | 23 Pre-Rig Down Safety Meeting |                              |
| ⑥ Pre-Rig Up Safety Meeting             | ⑫ Pump H2O Spacer        | ⑱ Pump Displacement    | 24 Rig-Down Equipment          |                              |

▼ **HALLIBURTON** | iCem® Service

Created: 2015-11-03 19:16:06, Version: 4.2.393

Edit

Customer : PICEANCE ENERGY LLC

Job Date : 11/3/2015 7:17:57 PM

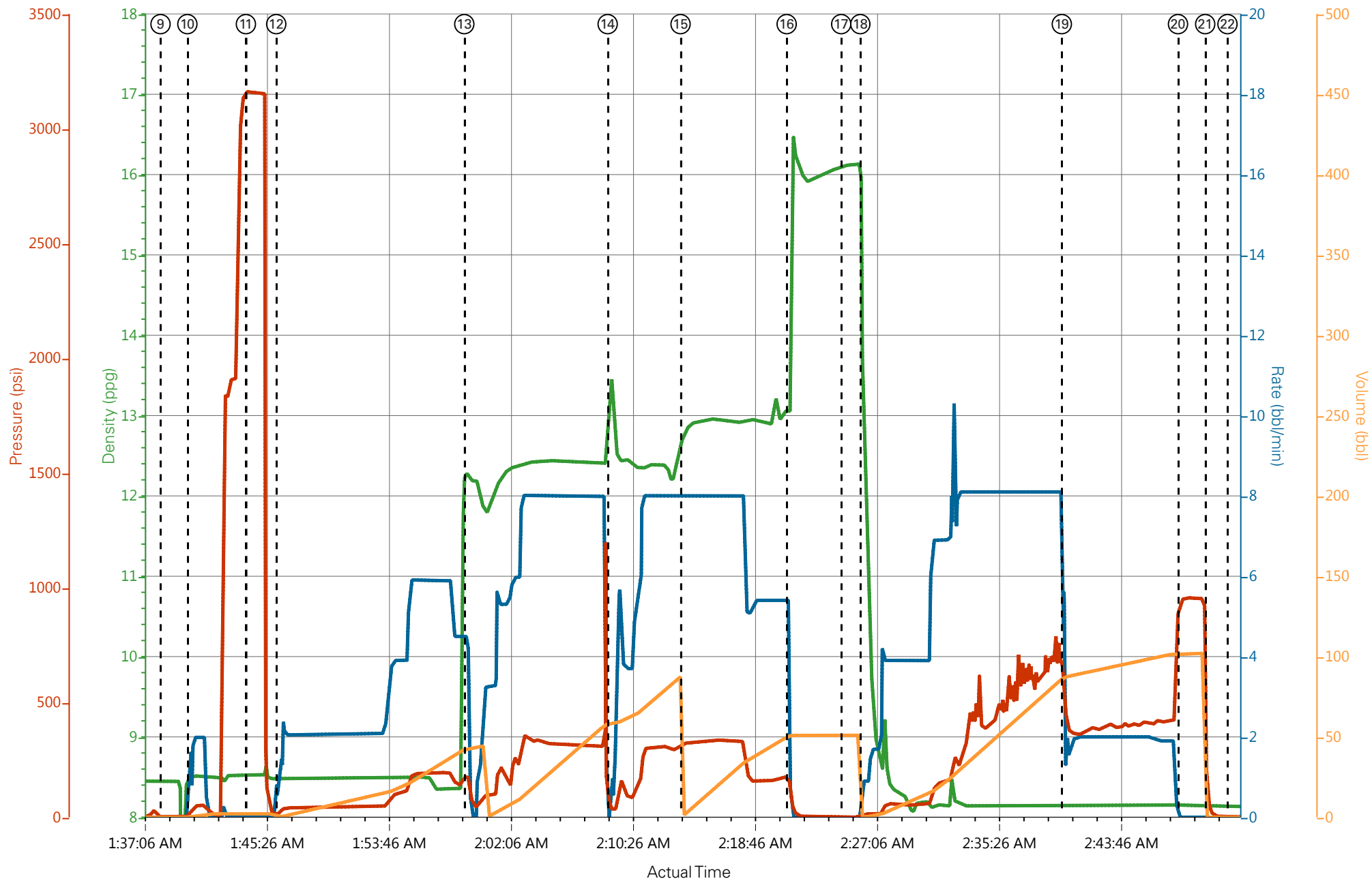
Well : Piceance Fed 28-13E

Representative : Roger Foster

Sales Order # : 902882407

Elite #4 : Ed Deussen / John Keane

# PICEANCE - Fed 28-13E - 8 5/8" Surface



DH Density (ppg) 8.16 Comb Pump Rate (bbl/min) 2.4 PS Pump Press (psi) 6.3 Pump Stg Tot (bbl) 2.3