

BONANZA CREEK ENERGY OPERATING CO
PO BOX 21974
BAKERSFIELD, California

State Antelope U-Y-32HNB

CADE 22

Post Job Summary

Cement Intermediate Casing

Date Prepared: 8/31/13
Version: 1

Service Supervisor: BARRAS, JOSEPH

Submitted by: LANSDALE, JUSTIN

HALLIBURTON

HALLIBURTON

Wellbore Geometry

| Job Tubulars | | | | | MD | | TVD | | Shoe Joint Length ft |
|-------------------|--------------------------|------------|----------|--------------|-----------|--------------|-----------|--------------|-------------------------|
| Type | Description | Size in | ID in | Wt lbm/ft | Top ft | Bottom ft | Top ft | Bottom ft | |
| Casing | 9 5/8" Surface Casing | 9.63 | 8.921 | 36.00 | 0.00 | 436.00 | | | 42.00 |
| Open Hole Section | 8 3/4" Open Hole Section | | 8.750 | | 436.00 | 6,780.00 | 436.00 | 5,900.00 | 0.00 |
| Casing | 7" Intermediate Casing | 7.00 | 6.276 | 26.00 | 0.00 | 6,780.00 | 0.00 | 5,900.00 | 42.00 |

HALLIBURTON

Pumping Schedule

| Stage /Plug # | Fluid # | Fluid Type | Fluid Name | Surface Density lbm/gal | Avg Rate bbl/min | Surface Volume | Downhole Volume |
|---------------|---------|---------------|---------------------|-------------------------|------------------|----------------|-----------------|
| 1 | 1 | Spacer | MUD FLUSH | 8.40 | 2.5 | 24.0 bbl | 24.0 bbl |
| 1 | 2 | Cement Slurry | 12.5# EconoCem Lead | 12.50 | 7.0 | 550.0 sacks | 185.0 bbl |
| 1 | 3 | Cement Slurry | 14.6 ExpandaCem | 14.60 | 5.0 | 260.0 sacks | 68.0 bbl |

Fluids Pumped

Stage/Plug # 1 Fluid 1: MUD FLUSH
DUMMY MUD / FLUSH / SPACER SBC MATERIAL
42 gal/bbl Mud Flush III
24 lbm/bbl Mud Flush III

Fluid Density: 8.40 lbm/gal
Fluid Volume: 24.00 bbl

Stage/Plug # 1 Fluid 2: 12.5# EconoCem Lead
ECONOCEM (TM) SYSTEM

Fluid Weight: 12.50 lbm/gal
Slurry Yield: 1.89 ft3/sack
Total Mixing Fluid: 10.29 Gal
Surface Volume: 550.0 sacks
Sacks: 550.0 sacks

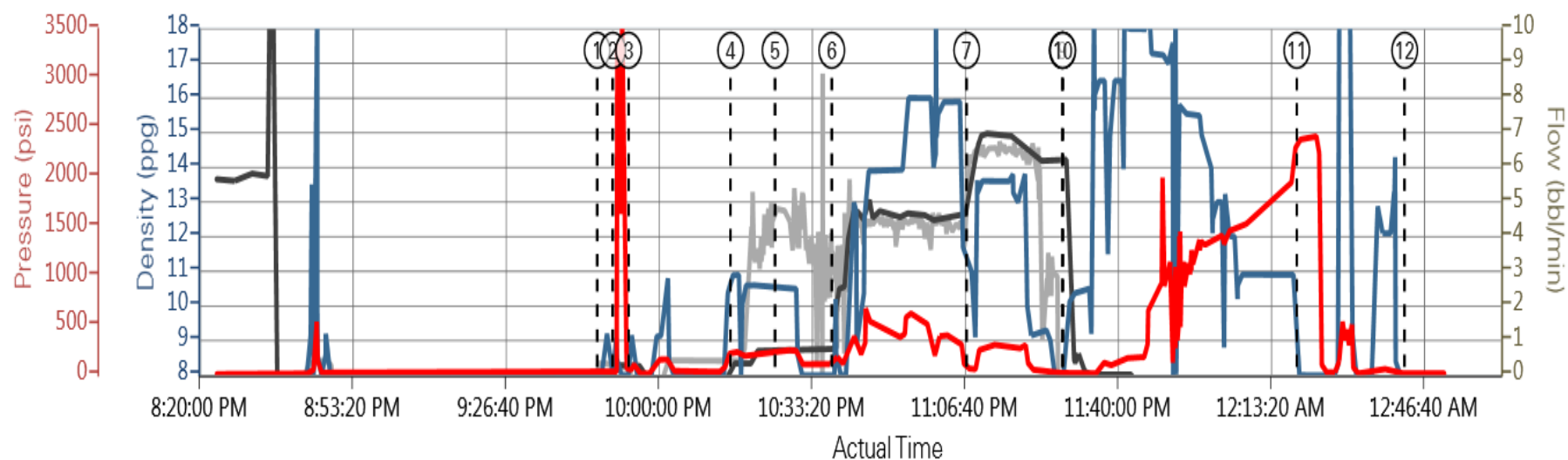
Stage/Plug # 1 Fluid 3: 14.6 ExpandaCem
EXPANDACEM (TM) SYSTEM

Fluid Weight: 14.60 lbm/gal
Slurry Yield: 1.46 ft3/sack
Total Mixing Fluid: 6.08 Gal
Surface Volume: 260.0 sacks
Sacks: 260.0 sacks

HALLIBURTON

Data Acquisition

BONANZA CREEK 7 IN INTERMEDIATE



- | | | |
|-----------------|---------------------|-------------|
| ① Start Job | ⑥ Pump Lead Cement | ⑪ Bump Plug |
| ② Test Lines | ⑦ Pump Tail Cement | ⑫ End Job |
| ③ Pump Spacer 1 | ⑧ Shutdown | |
| ④ Pump Spacer 1 | ⑨ Drop Top Plug | |
| ⑤ Pump Spacer 2 | ⑩ Pump Displacement | |

▲ Halliburton | iCem Service®

Created: 2013-08-28 20:12:50 , Version: 1.4.96

Edit

HALLIBURTON

Service Supervisor Reports

Job Log

| Date/Time | Chart # | Activity Code | Pump Rate | Cum Vol | Pump | | Pressure (psig) | | Comments |
|------------------|---------|-------------------|-----------|---------|------|--|-----------------|--------|---|
| 08/28/2013 09:47 | | Start Job | | | | | | | |
| 08/28/2013 09:50 | | Test Lines | 1.5 | | | | | | TEST TO 3500 PSI NO VISIBLE LEAKS |
| 08/28/2013 09:53 | | Pump Spacer 1 | 2.5 | 10 | | | | 220.0 | RIG WATER |
| 08/28/2013 10:16 | | Pump Spacer 2 | 2.5 | 24 | | | | 229.0 | RIG WATER WITH MUD FLUSH |
| 08/28/2013 10:25 | | Pump Spacer 1 | 2.5 | 10 | | | | 244.0 | RIG WATER |
| 08/28/2013 10:38 | | Pump Lead Cement | 7 | 185 | | | | 576.0 | MIXED WITH RIG WATER @ 12.5 PPG /550 SKS OF ECONOCEM |
| 08/28/2013 11:07 | | Pump Tail Cement | 5 | 68 | | | | 284.0 | MIXED WITH RIG WATER @ 14.6 PPG/260 SKS OF EXPANDACEM |
| 08/28/2013 11:28 | | Shutdown | | | | | | | |
| 08/28/2013 11:28 | | Drop Top Plug | | | | | | | PRELOADED AND WITNESSED BY COMPANYMAN |
| 08/28/2013 11:28 | | Pump Displacement | 7 | 258 | | | | 1940.0 | RIG WATER WITH SPACER BACK @ 237 BBL AWAY |
| 08/28/2013 12:19 | | Bump Plug | 3 | | | | | 2410.0 | |
| 08/28/2013 12:25 | | Check Floats | | | | | | | FLOATS HELD WITH 2 BBL BACK TO TRUCK |
| 08/28/2013 12:42 | | End Job | | | | | | | |

The Road to Excellence Starts with Safety

| | | | |
|--|--------------------|--|--------------------------|
| The Road to Excellence Starts with Safety | | | |
| Sold To #: 324725 | Ship To #: 3097302 | Quote #: | Sales Order #: 900696787 |
| Customer: BONANZA CREEK ENERGY OPERATING CO | | Customer Rep: Bradley, John | |
| Well Name: State Antelope | | Well #: U-Y-32HNB | API/UWI #: 05-123-37227 |
| Field: WATTENBERG | City (SAP): KERSEY | County/Parish: Weld | State: Colorado |
| Lat: N 40.362 deg. OR N 40 deg. 21 min. 42.912 secs. | | Long: W 104.342 deg. OR W -105 deg. 39 min. 27.576 secs. | |
| Contractor: CADE | | Rig/Platform Name/Num: Cade 22 | |
| Job Purpose: Cement Intermediate Casing | | | |
| Well Type: Development Well | | Job Type: Cement Intermediate Casing | |
| Sales Person: PLIENESS, RYAN | | Srvc Supervisor: BARRAS, JOSEPH | MBU ID Emp #: 405168 |

Job Personnel

| HES Emp Name | Exp Hrs | Emp # | HES Emp Name | Exp Hrs | Emp # | HES Emp Name | Exp Hrs | Emp # |
|---------------------------|---------|--------|-------------------------|---------|--------|--------------|---------|--------|
| BARNES, BRIAN L | 0.0 | 485204 | BARRAS, JOSEPH Corey | 0.0 | 405168 | DEY, JERRY A | 0.0 | 505015 |
| WHIPPLE, WESLEY Morgan | 0.0 | 518611 | | | | | | |

Equipment

| HES Unit # | Distance-1 way | HES Unit # | Distance-1 way | HES Unit # | Distance-1 way | HES Unit # | Distance-1 way |
|------------|----------------|------------|----------------|------------|----------------|------------|----------------|
| 10866493C | 60 mile | 11488570C | 60 mile | 11764739 | 60 mile | 11808819 | 60 mile |
| 11923776C | 60 mile | | | | | | |

Job**Job Times**

| Formation Name | | | | | | Date | Time | Time Zone |
|------------------------|----------|--|-------------------|----------|---------------|-----------------|-------|-----------|
| Formation Depth (MD) | Top | | Bottom | | Called Out | 28 - Aug - 2013 | 10:30 | MST |
| Form Type | BHST | | | | On Location | | | |
| Job depth MD | 6780. ft | | Job Depth TVD | 5900. ft | Job Started | 28 - Aug - 2013 | 21:47 | MST |
| Water Depth | | | Wk Ht Above Floor | 15. ft | Job Completed | 29 - Aug - 2013 | 00:42 | MST |
| Perforation Depth (MD) | From | | To | | Departed Loc | | | |

Well Data

| Description | New / Used | Max pressure psig | Size in | ID in | Weight lbm/ft | Thread | Grade | Top MD ft | Bottom MD ft | Top TVD ft | Bottom TVD ft |
|--------------------------|------------|----------------------|---------|-------|------------------|--------|-------|--------------|-----------------|---------------|------------------|
| 8 3/4" Open Hole Section | | | | 8.75 | | | | 436. | 6780. | 436. | 5900. |
| 7" Intermediate Casing | Unknown | | 7. | 6.276 | 26. | | P-110 | . | 6780. | . | 5900. |
| 9 5/8" Surface Casing | Unknown | | 9.625 | 8.921 | 36. | | J-55 | . | 436. | | |

| Fluid Data | | | | | | | | | | |
|--|---------------------|---------------------------------------|-------|-----------------------------------|------------------------|---------------------------|------------------|--------------|------------------------|--|
| Stage/Plug #: 1 | | | | | | | | | | |
| Fluid # | Stage Type | Fluid Name | Qty | Qty uom | Mixing Density lbm/gal | Yield ft ³ /sk | Mix Fluid Gal/sk | Rate bbl/min | Total Mix Fluid Gal/sk | |
| 1 | MUD FLUSH | | 24.00 | bbl | 8.4 | | | 2.5 | | |
| 42 gal/bbl | | MUD FLUSH III - SBM (528788) | | | | | | | | |
| 24 lbm/bbl | | MUD FLUSH III, 40 LB SACK (101633304) | | | | | | | | |
| 2 | 12.5# EconoCem Lead | ECONOCEM (TM) SYSTEM (452992) | 550.0 | sacks | 12.5 | 1.89 | 10.29 | 7.0 | 10.29 | |
| 10.29 Gal | | FRESH WATER | | | | | | | | |
| 3 | 14.6 ExpandaCem | EXPANDACEM (TM) SYSTEM (452979) | 260.0 | sacks | 14.6 | 1.46 | 6.08 | 5.0 | 6.08 | |
| 6.08 Gal | | FRESH WATER | | | | | | | | |
| Calculated Values | | Pressures | | Volumes | | | | | | |
| Displacement | | Shut In: Instant | | Lost Returns | | Cement Slurry | | Pad | | |
| Top Of Cement | | 5 Min | | Cement Returns | | Actual Displacement | | Treatment | | |
| Frac Gradient | | 15 Min | | Spacers | | Load and Breakdown | | Total Job | | |
| Rates | | | | | | | | | | |
| Circulating | | Mixing | | Displacement | | Avg. Job | | | | |
| Cement Left In Pipe | | Amount | 42 ft | Reason | Shoe Joint | | | | | |
| Frac Ring # 1 @ | ID | Frac ring # 2 @ | ID | Frac Ring # 3 @ | ID | Frac Ring # 4 @ | ID | | | |
| The Information Stated Herein Is Correct | | | | Customer Representative Signature | | | | | | |

