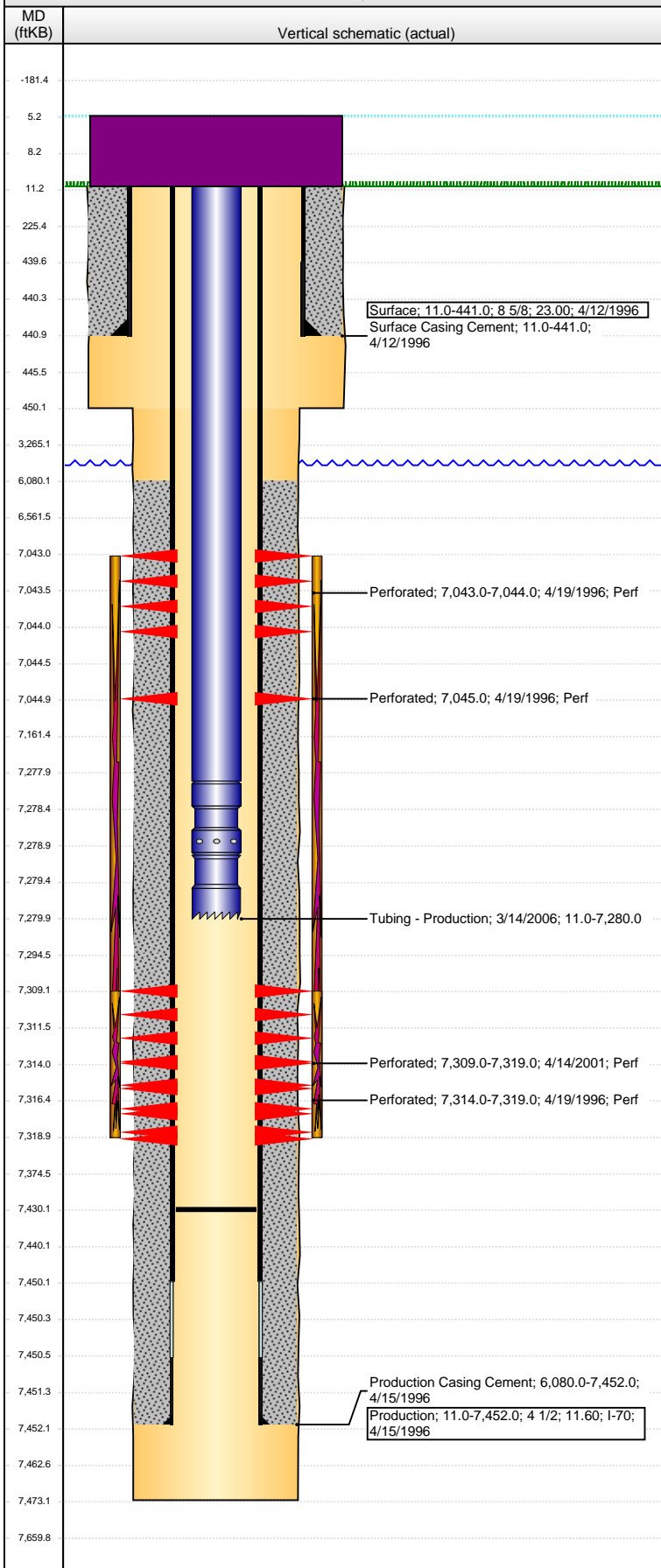


Well Name: HSR WIEDEMAN 09-20

VERTICAL - ORIGINAL HOLE, 2/17/2016 7:40:42 AM



Well Header								
API 05-123-19149		Business Unit DJ BASIN		District 15		Well Config VERTICAL		
Original KB Elevation (ft) 4,882.00		KB - GL / MSL (ftKB) 11.00		Spud Date 4/12/1996		P & A Date		
Comment								
Directions To Well								
Congressional Location								
Quarter 1	Quarter 2	Quarter 3 SE	Quarter 4	Section 20	Township 5 N	Twnshp N...	Range 66	Rng E/W Dir W
Bottom Hole Location								
North-South Distance (ft)		From N or S Line		East-West Distance (ft)			From E or W Line	
Plug Back Total Depths								
Date	Depth (ftKB)	Method			Com			
4/19/1996	7,401.0	CASED HOLE LOG			DEPTH LOGGER			
3/10/2006	7,430.0	TAG			TAG FILL			
Wellbore Sections								
Section Des		Size (in)		Act Top, MD (ftKB)		Act Btm, MD (ftKB)		
SURFACE		12 1/4		11.0		450.0		
PRODUCTION		7 7/8		450.0		7,473.0		
Zone Statuses								
Zone Name	Status Date	Status	Fluid Type	Job	Prod Method			
CODELL	5/2/1996	PR		DRILLING/CO...				
CODELL	4/16/2001	PR		RE-FRAC, 4/12...				
NIOBRARA	5/2/1996	PR		DRILLING/CO...				
Casing Strings								
Surface, 441.0ftKB								
Casing Description Surface		Run Date 4/12/1996	OD (in) 8 5/8	Wt/Len (l... 23.00	Grade	Top, MD (ft... 11.0	MD (ftKB) 441.0	
Production, 7,452.0ftKB								
Casing Description Production		Run Date 4/15/1996	OD (in) 4 1/2	Wt/Len (l... 11.60	Grade I-70	Top, MD (ft... 11.0	MD (ftKB) 7,452.0	
Cement								
Description Surface Casing Cement				Top Depth (ftKB) 11.0		Bottom Depth (ftKB) 441.0		
Description Production Casing Cement				Top Depth (ftKB) 6,080.0		Bottom Depth (ftKB) 7,452.0		
Tubing Strings								
Tubing Description Tubing - Production		Run Date 3/14/2006	String... 2 3/8	ID (in) 1.995	Wt (lb/ft) 4.70	Grade J-55	Len (ft) 7,269.00	Set De...
Tubing Components								
Item Des	OD (in)	Wt (lb/ft)	Grade	Jts	Len (ft)	Btm (ftKB)	Btm (TVD) (ftKB)	
Tubing	2 3/8	4.70	J-55	229	7,267.00	7,278.0		
Seating Nipple	2 3/8	1.10		1	1.00	7,279.0		
Notched collar	2 3/8			1	1.00	7,280.0		
Perforation Data								
Zone	Brnch/St g	Entered Shot Total	Top (ftKB)		Btm (ftKB)		Date	
NIOBRARA, ORIGINAL HOLE	B	4	7,043.00		7,044.00		4/19/1996	
NIOBRARA, ORIGINAL HOLE	B	1	7,045.00		7,045.00		4/19/1996	
CODELL, ORIGINAL HOLE		40	7,309.00		7,319.00		4/14/2001	
CODELL, ORIGINAL HOLE		12	7,314.00		7,319.00		4/19/1996	
Stimulations & Treatments								
Date 4/22/1996	Zone NIOBRARA-CODELL, ORIGINAL HOLE			Primary Job Type DRILLING/COMPLETION - ORIGINAL				
Technical Result		Tech Result Details				Tech Result Note		
Comment LIMITED ENTRY FRAC								
Date 4/16/2001	Zone CODELL, ORIGINAL HOLE			Primary Job Type RE-FRAC				
Technical Result		Tech Result Details				Tech Result Note		
Comment								

Well Name: HSR WIEDEMAN 09-20

VERTICAL - ORIGINAL HOLE, 2/17/2016 7:40:45 AM

Other In Hole

Run Date	Des	OD (in)	Top (ftKB)	Btm (ftKB)

Logs

Date	Type	Top, MD (ftKB)	Btm, MD (ftKB)
4/19/1996	CEMENT BOND		

