

Interim Reclamation Inspection

2/9/2016

Operator: Whiting Oil and Gas

Location ID: 430313

Weld County, CO

NWSW Section 27 T10N R58W

Aaron Trujillo

Reclamation Specialist

COGCC



Figure 1: Photo of well #123-37730.



Figure 2: Photo of well #123-38130



Whiting Oil & Gas Corp

Razor 27L-3404B
NW,SW, Sec 27, T10N-R58W
From intersection 110&127, N 1.5 miles,
E into Weld County, CO
API# 051233774400

Emergency # 1-800-723-4608

02.09.2016 14:49

Figure 3: Photo of well #123-37744.

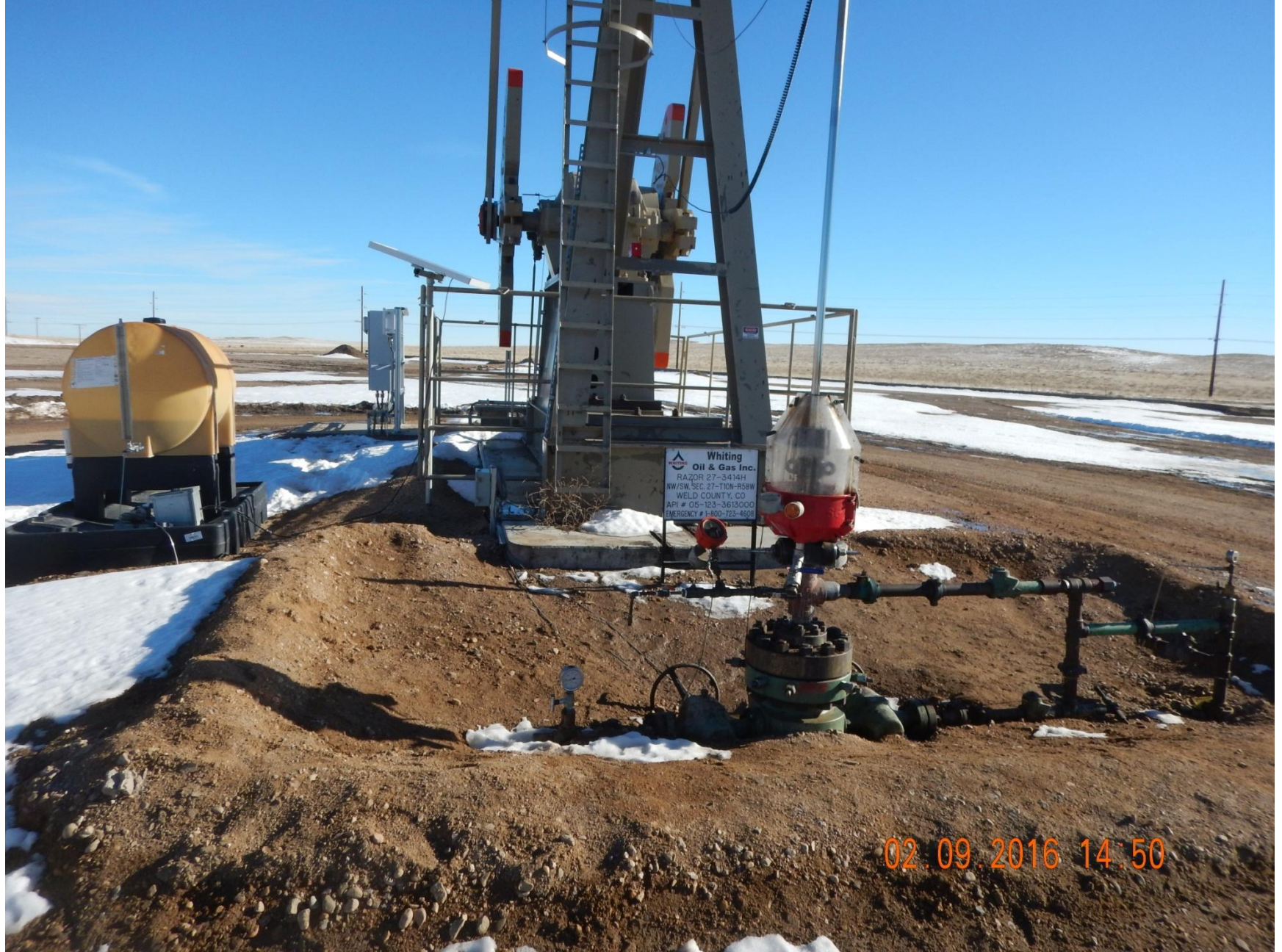


Figure 4: Photo of well #123-36130



Figure 5: Photo taken from the northern end of location, facing north. Photo of treated soils.



Figure 6: Photo taken from the northeast corner of location, facing west. Photo shows stormwater berm along northern end of location, and portion of the project and interim area.



Figure 7: Photo taken from the northeast portion of location, facing south. Photo shows stormwater berm along eastern end of location, and portion of the project and interim area.



Figure 8: Photo taken from the northeast end of location, facing south. Photo of vegetation on the eastern portion of the interim area.



Figure 9: Photo taken from topsoil stockpile on the east end of location, facing east. Photo of trash debris in interim area, and fence. Trash appears to be a large tub, and a plastic tarp.



Figure 10: Photo taken from the east end of the project location. Photo of impacted soils.



Figure 11: Photo taken from the east end of project area, photo of treated soils.



Figure 12: Photo taken from the southeast portion of the project area, facing south. Photo shows stormwater berm along eastern end of location, and portion of the project and interim area



Figure 13: Photo taken from the southeast portion of the project location, facing west. Photo shows stormwater berm along the southern end of location, and portion of the project and interim area



Figure 14: Photo taken from southern end of the location. Photo of equipment stored on the interim area.



Figure 15: Photo taken from the southwest portion of the project area, facing east. Photo shows stormwater berm along the southern end of location, and portion of the project and interim area



Figure 16: Photo taken from the southwest portion of the project area, facing north. Photo shows stormwater berm along the western end of location, and portion of the project and interim area



Figure 17: Photo taken from the berm on the west end of the location, facing east. Photo of musk thistle (*Carduus nutans*).



Figure 18: Photo taken from the berm on the west end of the location, facing east. Photo of musk thistle (*Carduus nutans*).

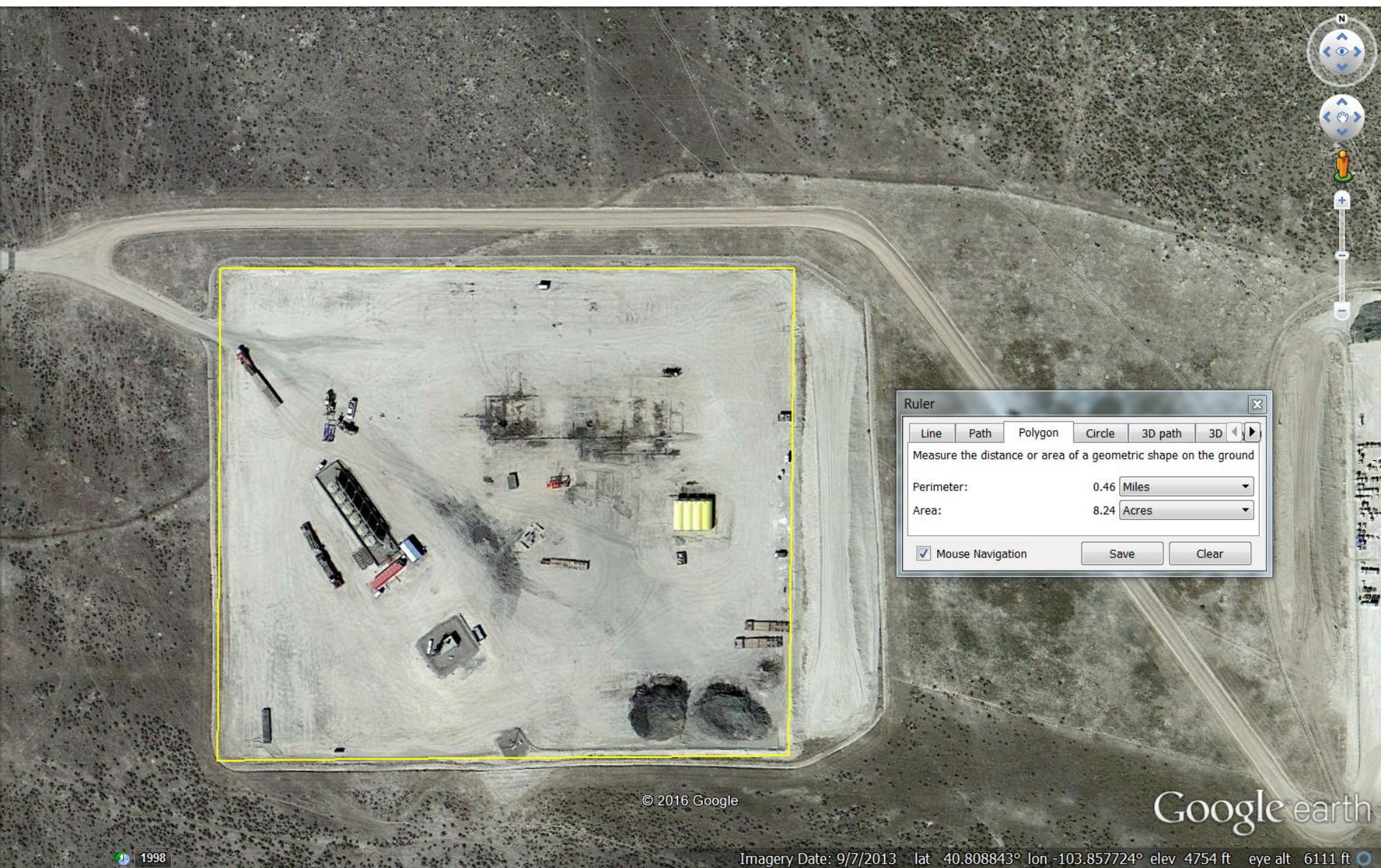


Figure 19: 2013 Aerial image. Aerial shows current size of project area to be approximately 8.24 acres. Approved 2A (Doc. # 400434675) states estimated size of location post interim reclamation to be approximately 3 acres in size.