

HALLIBURTON

iCem[®] Service

GREAT WESTERN OIL & GAS LLC - eBUS

For:

Date: Wednesday, August 27, 2014

POSTILE IC 11-342HC

POSTILE

Case 1

Sincerely,

AARON SMITH

Field Ticket Number: 0901610951	Field Ticket Date: Wednesday, August 27, 2014	Planning Order #: NA
Bill To: GREAT WESTERN OIL & GAS LLC - eBUS, DONOTMAIL-1801 BROADWAY STE 500, DENVER, CO, 80202	Job Name: 7" Intermediate Order Type: ZOH Well Name: POSTLE -IC- 11-342 HC Company Code: 1100 Customer PO No.: W10537 Shipping Point: FORT LUPTON Shipping Point Sales Office: ROCKY MOUNTAINS BD Well Type: HORIZONTAL OIL Well Category: Development Rig Name#: Xtreme 17	
Ship To: POSTLE -IC- 11-342 HC,WELD, PLATTEVILLE, CO, 80651		

Material	Description	QTY	UOM	Unit Amount	Gross Amount	Discount	Net Amount
7522	CMT INTERMEDIATE CASING BOM	1	JOB	0.00	0.00		0.00
	Cementing Services & Equipment						
16091	ZI - PUMPING CHARGE	1	EA	10,733.00	10,733.00	7298.44	3,434.56
	DEPTH	7588					
	FEET/METERS (FT/M)	FT					
432904	CMT, ROCKIES SG SETUP	1	EA	0.00	10,213.00	6469.52	3,743.48
432906	CMT, ROCKIES SG DELIVERY	35	TNM	0.00	-2,833.50	-2833.50	0.00
	Cementing Materials						
452992	CMT, EconoCem (TM) system	590	SK	0.00	54,126.09	36805.74	17,320.35
452979	CMT, ExpandaCem (TM) system	110	SK	0.00	16,548.22	11252.78	5,295.44
2	MILEAGE FOR CEMENTING CREW	70	MI	5.76	403.20	274.18	129.02
	Number of Units	1					
1	ZI-MILEAGE FROM NEAREST HES BASE/UNIT	70	MI	9.79	685.30	466.00	219.30
	Number of Units	1					
86954	ZI FUEL SURCHG-CARS/PICKUPS<1 1/2TON	70	MI	0.23	16.10		16.10
	Number of Units	1					
86955	ZI FUEL SURCHG-HEAVY TRKS >1 1/2 TON	70	MI	0.68	47.60		47.60
	Number of Units	1					
87605	FUEL SURCHG-CMT & CMT ADDITIVES	35	MI	0.23	298.00		298.00
	NUMBER OF TONS	37.019					
76400	MILEAGE,CMT MTLs DEL/RET MIN	35	MI	3.35	4,340.48	2951.53	1,388.95
	NUMBER OF TONS	37.019					
3965	HANDLE&DUMP SVC CHRg, CMT&ADDITIVES,ZI	938	CF	5.49	5,149.62	3501.74	1,647.88
	Unit of Measurement	EA					
	NUMBER OF EACH	1					
483826	SBM, CMT, Tuned Spacer III	30	BBL	293.00	8,790.00	5977.20	2,812.80
100003681	CHEM, BARITE, BULK	45	SK	31.07	1,398.15	950.74	447.41
	Barite						
Totals USD					\$ 109,915.26	\$ 73,114.37	\$ 36,800.89

Field Ticket Signature

Field Ticket Number: 0901610951	Field Ticket Date: Wednesday, August 27, 2014	Planning Order #: NA
Bill To: GREAT WESTERN OIL & GAS LLC - eBUS, DONOTMAIL-1801 BROADWAY STE 500, DENVER, CO, 80202	Job Name: 7" Intermediate Order Type: ZOH Well Name: POSTLE -IC- 11-342 HC Company Code: 1100 Customer PO No.: W10537 Shipping Point: FORT LUPTON Shipping Point Sales Office: ROCKY MOUNTAINS BD Well Type: HORIZONTAL OIL Well Category: Development Rig Name/#: Xtreme 17	
Ship To: POSTLE -IC- 11-342 HC,WELD, PLATTEVILLE, CO, 80651		

THIS OUTPUT DOES NOT INCLUDE TAXES. APPLICABLE SALES TAX WILL BE BILLED ON THE FINAL INVOICE. CUSTOMER HEREBY ACKNOWLEDGES RECEIPT OF THE MATERIALS AND SERVICES DESCRIBED ABOVE, ON ANY PRECEDING PAGES, AND ATTACHED DOCUMENTS.

Gross Amount Total:	\$ 109,915.26
Item Discount Total:	\$ 73,114.37
Net Amount Total:	\$ 36,800.89 USD

Customer Representative Signature: _____

Date: _____

JEFF LOFTON

Aaron Smith

Customer Representative

Halliburton Representative

Was our HSE performance satisfactory? (Health, Safety, Environment)

☐ Yes ☐ No

Were you satisfied with our equipment?

☐ Yes ☐ No

Were you satisfied with our people?

☐ Yes ☐ No

Comments:

The Road to Excellence Starts with Safety

Sold To #: 346459	Ship To #: 3358874	Quote #:	Sales Order #: 0901610951
Customer: GREAT WESTERN OIL & GAS LLC - eBUS		Customer Rep: JEFF LOFTON	
Well Name: POSTLE -IC-		Well #: 11-342 HC	API/UWI #: 05-123-38972-00
Field: WATTENBERG	City (SAP): PLATTEVILLE	County/Parish: WELD	State: COLORADO
Legal Description: SW SW-12-3N-68W-498FSL-250FWL			
Contractor:		Rig/Platform Name/Num: Xtreme 17	
Job BOM: 7522			
Well Type: HORIZONTAL OIL			
Sales Person: HALAMERICA\HB60191		Srv Supervisor: Aaron Smith	

Job

Formation Name	
Formation Depth (MD)	Top Bottom
Form Type	BHST
Job depth MD	7588ft
Water Depth	Job Depth TVD 7251
Perforation Depth (MD)	Wk Ht Above Floor 4
	From To

Well Data

Description	New / Used	Size in	ID in	Weight lbm/ft	Thread	Grade	Top MD ft	Bottom MD ft	Top TVD ft	Bottom TVD ft
Casing	0	9.625	8.921	36			0	1040	0	0
Casing	0	7	6.276	26		P-110	0	7588	0	7251
Open Hole Section			8.75				1040	7604	0	7251

Tools and Accessories

Type	Size in	Qty	Make	Depth ft	Type	Size in	Qty	Make
Guide Shoe	7				Top Plug	7	1	HES
Float Shoe	7	1	SSII	7588	Bottom Plug	7		HES
Float Collar	7	1	SSII	7536	SSR plug set	7		HES
Insert Float	7				Plug Container	7	1	HES
Stage Tool	7				Centralizers	7		HES

Miscellaneous Materials

Gelling Agt	Conc	Surfactant	Conc	Acid Type	Qty	Conc
Treatment Fld	Conc	Inhibitor	Conc	Sand Type	Size	Qty

Fluid Data

Stage/Plug #: 1									
Fluid #	Stage Type	Fluid Name	Qty	Qty UoM	Mixing Density lbm/gal	Yield ft ³ /sack	Mix Fluid Gal	Rate bbl/min	Total Mix Fluid Gal
1	11.5 lb/gal Tuned Spacer III	Tuned Spacer III	30	bbl	11.5	3.75	24.2	6	
36.09 gal/bbl		FRESH WATER							
148.73 lbm/bbl		BARITE, BULK (100003681)							

HALLIBURTON

GREAT WESTERN OIL & GAS LLC - EBUS
GREAT WESTERN POSTILE IC 11-342HC INTERMEDIATE
Case 1

1.6 Job Event Log

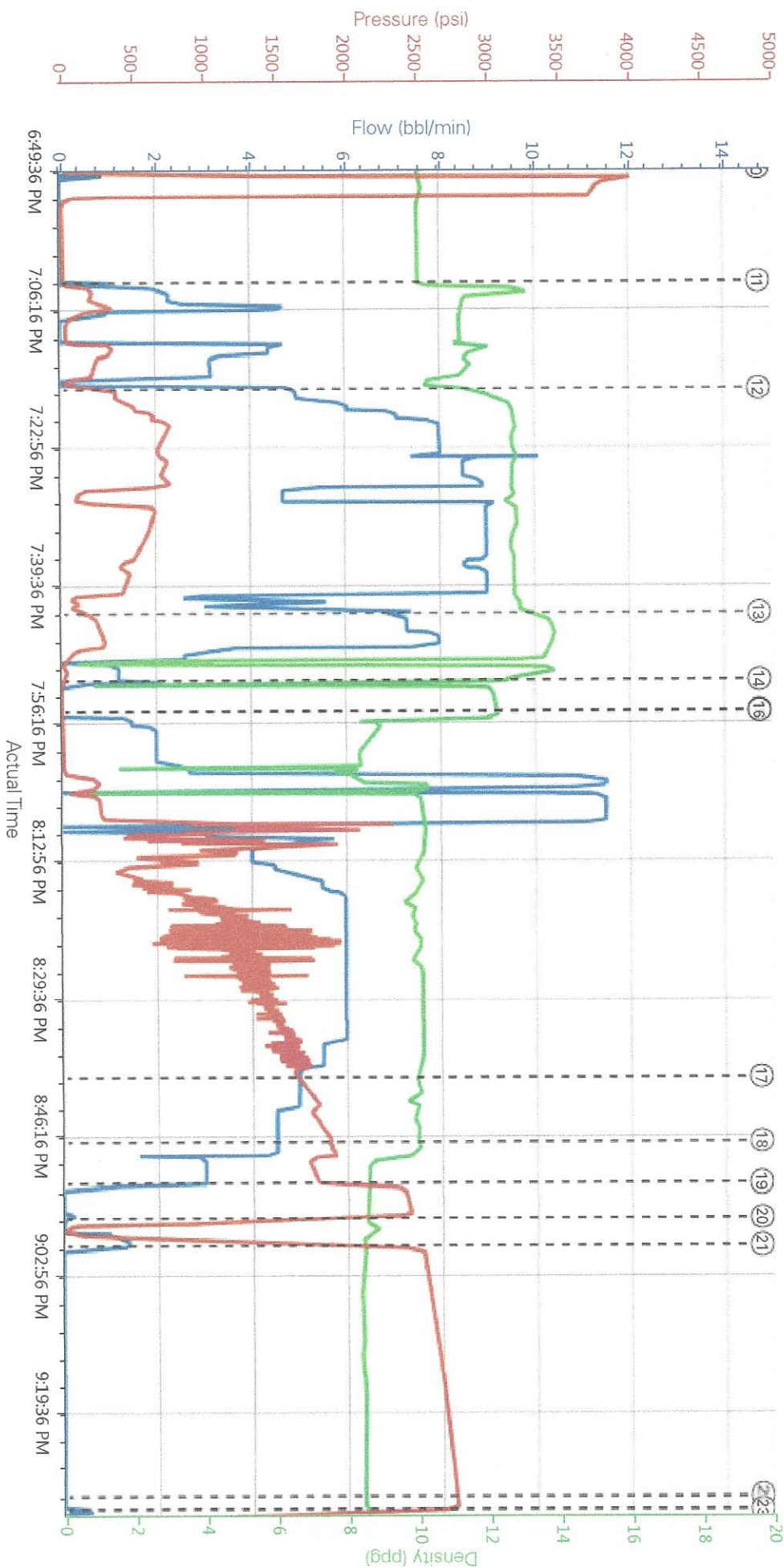
Event	Seq. No.	Activity	Graph Label	Date	Time	Source	Comb Pump Rate (bbl/min)	DH Density (ppg)	PS Pump Press (psi)	Comment
Event 1	1	Call Out	Call Out	8/27/2014	13:00:00	USER				FOR ON LOCATION AT 1700
Event 2	2	Depart Yard Safety Meeting	Depart Yard Safety Meeting	8/27/2014	15:45:00	USER				JOURNEY MANAGEMENT MEETING PRIOR TO DEPARTURE
Event 3	3	Depart from Service Center or Other Site	Depart from Service Center or Other Site	8/27/2014	16:00:00	USER				
Event 4	4	Arrive at Location from Service Center	Arrive at Location from Service Center	8/27/2014	17:00:00	USER				WITH ALL EQUIPMENT AND MATERIALS, CASING CREW RIGGING DOWN
Event 5	5	Pre-Rig Up Safety Meeting	Pre-Rig Up Safety Meeting	8/27/2014	17:10:00	USER				RIG-UP JSA WITH HES CREW
Event 6	6	Rig-Up Equipment	Rig-Up Equipment	8/27/2014	17:20:00	USER				
Event 7	7	Rig-Up Completed	Rig-Up Completed	8/27/2014	17:40:00	USER				
Event 8	8	Pre-Job Safety Meeting	Pre-Job Safety Meeting	8/27/2014	18:00:00	USER	0.00	1.53	4.00	WITH CUSTOMER REP AND RIG CREW
Event 9	9	Start Job	Start Job	8/27/2014	18:31:22	COM4	0.00	10.14	5.00	
Event 10	10	Test Lines	Test Lines	8/27/2014	18:49:54	COM4	0.00	10.11	45.00	@3500 PSI
Event 11	11	Pump Spacer 1	Pump Spacer 1	8/27/2014	19:03:30	COM4	1.30	11.07	90.00	30 BBLS @ 11.5 PPG, 3.75 YIELD, 24.2 GAL/SK
Event 12	12	Pump Lead Cement	Pump Lead Cement	8/27/2014	19:16:19	COM4	5.00	11.85	387.00	198 BBLS 590 SKS @ 12.7 PPG, 1.89 YIELD, 9.97 GAL/SK
Event 13	13	Pump Tail Cement	Pump Tail Cement	8/27/2014	19:43:25	COM4	7.30	13.69	242.00	32 BBLS 110 SKS @ 13.8 PPG, 1.68 YIELD, 7.66 GAL/SK
Event 14	14	Shutdown	Shutdown	8/27/2014	19:51:35	COM4	0.00	1.04	12.00	
Event 15	15	Drop Top Plug	Drop Top Plug	8/27/2014	19:55:16	COM4	0.00	12.31	3.00	PRE-LOADED HWE TOP PLUG IN PLUG CONTAINER, VERIFIED BY CUSTOMER REP
Event 16	16	Pump Displacement	Pump Displacement	8/27/2014	19:55:22	COM4	0.00	12.29	3.00	288 BBLS MUD

HALLIBURTON

GREAT WESTERN OIL & GAS LLC - eBUS
GREAT WESTERN POSTILE IC 11-342HC INTERMEDIATE
Case 1

Event	17	Other	Spacer Returns to Surface	8/27/2014	20:39:33	COM4	5.00	9.99	1641.00	@243 BBLS DISPLACEMENT, 30 BBLS TO SURFACE
Event	18	Other	Cement Returns to Surface	8/27/2014	20:47:26	COM4	4.60	10.00	1882.00	@273 BBLS DISPLACEMENT, 15 BBLS TO SURFACE
Event	19	Bump Plug	Bump Plug	8/27/2014	20:52:27	COM4	0.00	8.56	2366.00	FINAL CIRCULATING PRESSURE 1867 PSI
Event	20	Check Floats	Check Floats	8/27/2014	20:56:31	USER	0.00	8.51	1157.00	FLOATS HELD, 2.25 BBLS BACK
Event	21	Pressure Up Well	Pressure Up Well	8/27/2014	20:59:48	COM4	0.00	8.44	2509.00	CASING TEST @ 2500 PSI FOR 30 MIN
Event	22	Pre-Rig Down Safety Meeting	Pre-Rig Down Safety Meeting	8/27/2014	21:30:00	USER	0.00	8.52	2773.00	RI-DOWN JSA WITH HES CREW
Event	23	End Job	End Job	8/27/2014	21:31:30	COM4				
Event	24	Rig-Down Equipment	Rig-Down Equipment	8/27/2014	21:35:00	USER				
Event	25	Rig-Down Completed	Rig-Down Completed	8/27/2014	22:00:00	USER				
Event	26	Depart Location for Service Center or Other Site	Depart Location for Service Center or Other Site	8/27/2014	22:15:00	USER				

GREAT WESTERN POSTILE IC 11-342HC INTERMEDIATE



- | | | | | |
|--|---|--------------------------------|----------------------------------|-----------------------------|
| ① Call Out n/a;n/a;n/a | ⑤ Pre-Rig Up Safety Meeting n/a;n/a;n/a | ⑨ Start Job 0;10.14;5 | ⑬ Pump Tail Cement 7.3;13.69;241 | ⑰ Spacer Returns to Surface |
| ② Depart Yard Safety Meeting n/a;n/a;n/a | ⑥ Rig-Up Equipment n/a;n/a;n/a | ⑩ Test Lines 0;10.09;45 | ⑭ Shutdown 0;0.93;11 | ⑱ Cement Returns to Surface |
| ③ Depart from Service Center or Other Site n/a;n/a;n/a | ⑦ Rig-Up Completed n/a;n/a;n/a | ⑪ Pump Spacer 1 1.3;11.23;99 | ⑮ Drop Top Plug 0;12.3;3 | ⑲ Bump Plug 0;8.56;2366 |
| ④ Arrive at Location from Service Center n/a;n/a;n/a | ⑧ Pre-Job Safety Meeting 0;1.53;4 | ⑫ Pump Lead Cement 5;11.85;391 | ⑯ Pump Displacement 0;12.28;3 | ⑳ Check Floats 0;8.52;1135 |

HALLIBURTON | iCem® Service

Created: 2014-08-27 15:09:34, Version: 3.0.148

Edit

Customer : GREAT WESTERN OIL & GAS LLC - eBUS
Representative : AARON SMITH

Job Date : 8/27/2014 5:58:52 PM
Sales Order # : 901610951

Well : POSTILE IC 11-342HC