

HALLIBURTON

iCem[®] Service

GREAT WESTERN OIL & GAS LLC

For:

Date: Friday, October 24, 2014

Postle IC 11-259HC Production Liner

Case 1

Sincerely,

Derek Trier

Table of Contents

1.1	Executive Summary	3
1.2	Cementing Job Summary	4
1.3	Job Overview	6
1.4	Job Event Log	7
2.0	Attachments	9
2.1	Case 1-Custom Results.png	9
3.0	Appendix	10

1.1 Executive Summary

Halliburton appreciates the opportunity to perform the cementing services on the **Postle IC 11-259HC cement Production Liner** job. A pre-job safety meeting was held before the job where details of the job were discussed, potential safety hazards were reviewed, and environmental compliance procedures were outlined.

Halliburton maintains a continuous quality improvement process and appreciates any comments or suggestions that you may have. Halliburton again thanks you for the opportunity to perform service work on this well. We hope to be your solutions provider for future projects.

Respectfully,

Halliburton [Brighton]

Job Times

	Date	Time	Time Zone
Called Out	10/24/14	0530	MST
On Location	10/24/14	0900	
Job Started	10/24/14	1257	
Job Completed	10/24/14	1532	
Departed Location	10/24/14	1630	

1.2 Cementing Job Summary



Cementing Job Summary

The Road to Excellence Starts with Safety

Sold To #: 346459	Ship To #: 3474561	Quote #:	Sales Order #: 0901757268								
Customer: GREAT WESTERN OIL & GAS LLC - eBUS		Customer Rep:									
Well Name: POSTLE IC	Well #: 11-259HC	API/UWI #: 05-123-39353-00									
Field: WATTENBERG	City (SAP): PLATTEVILLE	County/Parish: WELD	State: COLORADO								
Legal Description: SW NW-11-3N-68W-1559FNL-422FWL											
Contractor: XTREME DRLG		Rig/Platform Name/Num: XTREME 17									
Job BOM: 7525											
Well Type: HORIZONTAL OIL											
Sales Person: HALAMERICA/H117930		Srvc Supervisor: JOSEPH ROMERO									
Job											
Formation Name											
Formation Depth (MD)	Top	Bottom									
Form Type		BHST									
Job depth MD	11900ft	Job Depth TVD									
Water Depth		Wk Ht Above Floor									
Perforation Depth (MD)	From	To									
Well Data											
Description	New / Used	Size in	ID in	Weight lbm/ft	Thread	Grade	Top MD ft	Bottom MD ft	Top TVD ft	Bottom TVD ft	
Drill Pipe		4	3.34	14			0	7679		0	
Casing		7	6.366	23	LTC	L-80	0	7790	0	0	
Casing		4.5	4	11.6	BTC	P-110	7679	12312	0	0	
Open Hole Section			6.125				7791	12352	0	0	
Tools and Accessories											
Type	Size in	Qty	Make	Depth ft	Type	Size in	Qty	Make			
Guide Shoe	4.5	1		12312	Top Plug	4.5	1	HES			
Float Shoe	4.5	1			Bottom Plug	4.5	1	HES			
Float Collar	4.5	1			SSR plug set	4.5	1	HES			
Insert Float	4.5	1			Plug Container	4.5	1	HES			
Stage Tool	4.5	1			Centralizers	4.5	1	HES			
Miscellaneous Materials											
Gelling Agt		Conc		Surfactant		Conc		Acid Type		Qty	Conc
Treatment Fld		Conc		Inhibitor		Conc		Sand Type		Size	Qty
Fluid Data											
Stage/Plug #: 1											
Fluid #	Stage Type	Fluid Name	Qty	Qty UoM	Mixing Density lbm/gal	Yield ft ³ /sack	Mix Fluid Gal	Rate bbl/min	Total Mix Fluid Gal		
1	11.5 lb/gal Tuned Spacer III	Tuned Spacer III	40	bbl	11.5	3.73					
36.09 gal/bbl		FRESH WATER									
149.45 lbm/bbl		BARITE, BULK (100003681)									

HALLIBURTON

Cementing Job Summary

Fluid #	Stage Type	Fluid Name	Qty	Qty UoM	Mixing Density lbm/gal	Yield ft ³ /sack	Mix Fluid Gal	Rate bbl/min	Total Mix Fluid Gal	
2	Tail Cement	EXPANDACEM (TM) SYSTEM	300	sack	13.8	1.67		6	7.69	
0.40 %		SCR-742, 50 LB BAG (102027729)								
7.69 Gal		FRESH WATER								
Fluid #	Stage Type	Fluid Name	Qty	Qty UoM	Mixing Density lbm/gal	Yield ft ³ /sack	Mix Fluid Gal	Rate bbl/min	Total Mix Fluid Gal	
3	Displacement	Displacement	140	bbl	8.33					
Cement Left in Pipe		Amount	80 ft		Reason			Shoe Joint		
Comment										

1.3 Job Overview

		Units	Description
1	Surface temperature at time of job	°F	
2	Mud type (OBM, WBM, SBM, Water, Brine)	-	WBM
3	Actual mud density	lb/gal	
4	Time circulated before job	HH:MM	
5	Mud volume circulated	Bbls	
6	Rate at which well was circulated	Bpm	
7	Pipe movement during hole circulation	Y/N	N
8	Rig pressure while circulating	Psi	
9	Time from end mud circulation to start of job	HH:MM	
10	Pipe movement during cementing	Y/N	N
11	Calculated displacement	Bbls	140
12	Job displaced by	Rig/HES	HES
13	Annular before job)?	Y/N	N
14	Annular flow after job	Y/N	N
15	Length of rat hole	Ft	
16	Units of gas detected while circulating	Units	
17	Was lost circulation experienced at any time ?	Y/N	N

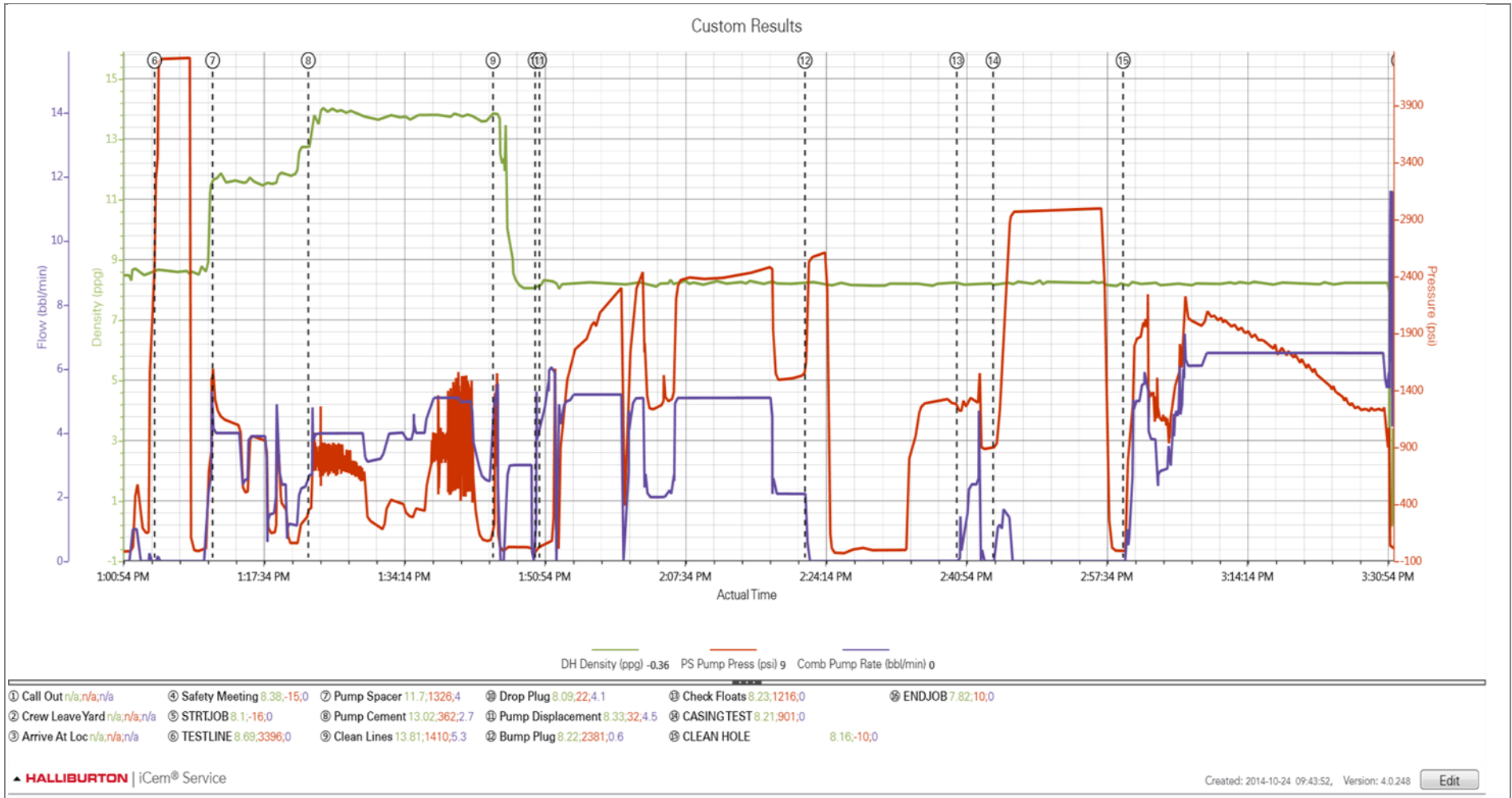
1.4 Job Event Log

Type	Seq. No.	Activity	Graph Label	Date	Time	Source	Downhole Density (ppg)	Pass-Side Pump Pressure (psi)	Combined Pump Rate (bbl/min)	Comment
Event	1	Call Out	Call Out	10/24/2014	05:30:00	USER				
Event	2	Crew Leave Yard	Crew Leave Yard	10/24/2014	08:00:00	USER				
Event	3	Arrive At Loc	Arrive At Loc	10/24/2014	09:00:00	USER				RIG HAD JUST TAG BOTTOM
Event	4	Pre-Job Safety Meeting	Safety Meeting	10/24/2014	11:45:00	USER	8.38	-15.00	0.00	JSA WITH ALL INVOLVED PERSONAL
Event	5	STRTJOB	STRTJOB	10/24/2014	12:57:58	COM4	8.10	-16.00	0.00	
Event	6	TESTLINE	TESTLINE	10/24/2014	13:04:51	COM4	8.69	3396.00	0.00	TESTED LINES TO 4310PSI AND HELD FOR 4MIN WITH NO VISABLE LEAKS.
Event	7	Pump Spacer	Pump Spacer	10/24/2014	13:11:44	USER	11.70	1326.00	4.00	PUMPED 40BBLS OF 11.5PPG TUNED SPACER AT 4BPM WITH 1120PSI
Event	8	Pump Cement	Pump Cement	10/24/2014	13:23:05	USER	13.02	362.00	2.70	PUMPED 300SKS OR 89BBLS OF 13.8PPG EXPANDACEM AT 4BPM WITH 365PSI. PER COMPANY REP WE ONLY PUMPED THE 300SKS AND TOOK 25SKS BACK TO THE YARD.
Event	9	Clean Lines	Clean Lines	10/24/2014	13:45:00	USER	13.81	1410.00	5.30	SHUTDOWN, SWITCHED OVER MANIFOLD AND WASH PUMPS AND LINES.
Event	10	Drop Plug	Drop Plug	10/24/2014	13:50:00	USER	8.09	22.00	4.10	PLUG WAS PRELOADED BY THIRD PARTY AND RELEASED BY THRID PARTY
Event	11	Pump Displacement	Pump Displacement	10/24/2014	13:50:30	USER	8.33	32.00	4.50	PUMPED 10BBLS OF A MIXED MMCR, SUGAR AND WATER. THEN PUMPED 130BBLS OF FRESH WATER AT 5BPM WITH 2422PSI.
Event	12	Bump Plug	Bump Plug	10/24/2014	14:22:00	USER	8.22	2381.00	0.60	LANDED PLUG AT 1547PSI AND BROUGHT IT UP TO 2598PSI AND HELD FOR 2 MIN
Event	13	Check Floats	Check Floats	10/24/2014	14:40:00	USER	8.23	1216.00	0.00	RELEASED PRESSURE AND GOT 1.5BBLS BACK TO THE TRUCK AND FLOATS HELD
Event	14	OTHER	CASING TEST	10/24/2014	14:44:18	COM4	8.21	901.00	0.00	TESTED CASING AT 2973PSI AND HELD FOR 10MIN. RELEASED PRESSURE AT 2998PSI.

Event	15	OTHER	CLEAN HOLE	10/24/2014	14:59:43	COM4	8.16	-10.00	0.00	PUMPED 170BBLS OF FRESH WATER TO CLEAN HOLE. GOT ALL THE SPACER AND 6BBLS OF CEMENT BACK TO SUREFACE.
Event	16	ENDJOB	ENDJOB	10/24/2014	15:32:24	COM4	7.82	10.00	0.00	

2.0 Attachments

2.1 Case 1-Custom Results.png



3.0 Appendix
