

HALLIBURTON

iCem[®] Service

GREAT WESTERN OIL & GAS LLC - eBUS

For:

Date: Saturday, August 16, 2014

Great Western Postle IC 11-259HN Surface

GREAT WESTERN OIL & GAS POSTLE IC 11-259HN

Sincerely,

Derek Trier

Table of Contents

1.1	Executive Summary	3
1.2	Cementing Job Summary	4
1.3	Planned Pumping Schedule	Error! Bookmark not defined.
1.4	Job Overview	6
1.5	Water Field Test	Error! Bookmark not defined.
1.6	Job Event Log	7
2.0	Attachments	9
2.1	GREAT WESTERN OIL & GAS POSTLE IC 11-162HN-Custom Results.png	9
3.0	Appendix	10

1.1 Executive Summary

Halliburton appreciates the opportunity to perform the cementing services on the **Postle IC 11-259HN** cement **Surface** casing job. A pre-job safety meeting was held before the job where details of the job were discussed, potential safety hazards were reviewed, and environmental compliance procedures were outlined.

Halliburton maintains a continuous quality improvement process and appreciates any comments or suggestions that you may have. Halliburton again thanks you for the opportunity to perform service work on this well. We hope to be your solutions provider for future projects.

Respectfully,

Halliburton [Brighton]

Job Times

	Date	Time	Time Zone
Job Started	8/19/14	0959	MST
Job Completed	8/19/14	1113	
Departed Location	8/19/14	1140	

1.2 Cementing Job Summary

HALLIBURTON

Cementing Job Summary

The Road to Excellence Starts with Safety

Sold To #: 346459	Ship To #: 3474561	Quote #:	Sales Order #: 0901592252
Customer: GREAT WESTERN OIL & GAS LLC - eBUS		Customer Rep:	
Well Name: POSTLE IC	Well #: 11-259HC	API/UWI #: 05-123-39353-00	
Field: WATTENBERG	City (SAP): PLATTEVILLE	County/Parish: WELD	State: COLORADO
Legal Description: SW NW-11-3N-68W-1559FNL-422FWL			
Contractor:		Rig/Platform Name/Num: Craig 7	
Job BOM: 7521			
Well Type: HORIZONTAL OIL			
Sales Person: HALAMERICA117930		Srv Supervisor: Aaron Smith	
Job			

Formation Name			
Formation Depth (MD)	Top	Bottom	
Form Type	BHST		
Job depth MD	1065ft	Job Depth TVD	
Water Depth	Wk Ht Above Floor		
Perforation Depth (MD)	From	To	

Well Data

Description	New / Used	Size in	ID in	Weight lbm/ft	Thread	Grade	Top MD ft	Bottom MD ft	Top TVD ft	Bottom TVD ft
Casing	0	9.625	8.921	36	LTC	J-55	0	1065	0	1065
Open Hole Section			13.5				0	1070	0	1070

Tools and Accessories

Type	Size in	Qty	Make	Depth ft	Type	Size in	Qty	Make
Guide Shoe	9.625				Top Plug	9.625	1	HES
Float Shoe	9.625	1	SSII	1065	Bottom Plug	9.625		HES
Float Collar	9.625	1	SSII	1023	SSR plug set	9.625		HES
Insert Float	9.625				Plug Container	9.625	1	HES
Stage Tool	9.625				Centralizers	9.625		HES

Miscellaneous Materials

Gelling Agt	Conc	Surfactant	Conc	Acid Type	Qty	Conc
Treatment Fld	Conc	Inhibitor	Conc	Sand Type	Size	Qty

Fluid Data

Stage/Plug #: 1

Fluid #	Stage Type	Fluid Name	Qty	Qty UoM	Mixing Density lbm/gal	Yield ft ³ /sack	Mix Fluid Gal	Rate bbl/min	Total Mix Fluid Gal
1	Fresh Water Spacer	Mud Flush III	10	bbl	8.4			6	

Fluid #	Stage Type	Fluid Name	Qty	Qty UoM	Mixing Density lbm/gal	Yield ft ³ /sack	Mix Fluid Gal	Rate bbl/min	Total Mix Fluid Gal
2	SwiftCem B2	SWIFTCM (TM) SYSTEM	420	sack	14.2	1.54		6	7.64

HALLIBURTON

Cementing Job Summary

7.64 Gal		FRESH WATER							
Fluid #	Stage Type	Fluid Name	Qty	Qty UoM	Mixing Density lbm/gal	Yield ft ³ /sack	Mix Fluid Gal	Rate bbl/min	Total Mix Fluid Gal
3	Displacement	Displacement	79	bbl	8.33			6	
Cement Left in Pipe		Amount 42 ft	Reason			Shoe Joint			
Comment									

1.3 Job Overview

		Units	Description
1	Surface temperature at time of job	°F	
2	Mud type (OBM, WBM, SBM, Water, Brine)	-	WBM
3	Actual mud density	lb/gal	9.0
4	Time circulated before job	HH:MM	
5	Mud volume circulated	Bbls	
6	Rate at which well was circulated	Bpm	
7	Pipe movement during hole circulation	Y/N	N
8	Rig pressure while circulating	Psi	
9	Time from end mud circulation to start of job	HH:MM	
10	Pipe movement during cementing	Y/N	N
11	Calculated displacement	Bbls	79
12	Job displaced by	Rig/HES	HES
13	Annular before job)?	Y/N	
14	Annular flow after job	Y/N	
15	Length of rat hole	Ft	
16	Units of gas detected while circulating	Units	
17	Was lost circulation experienced at any time ?	Y/N	N

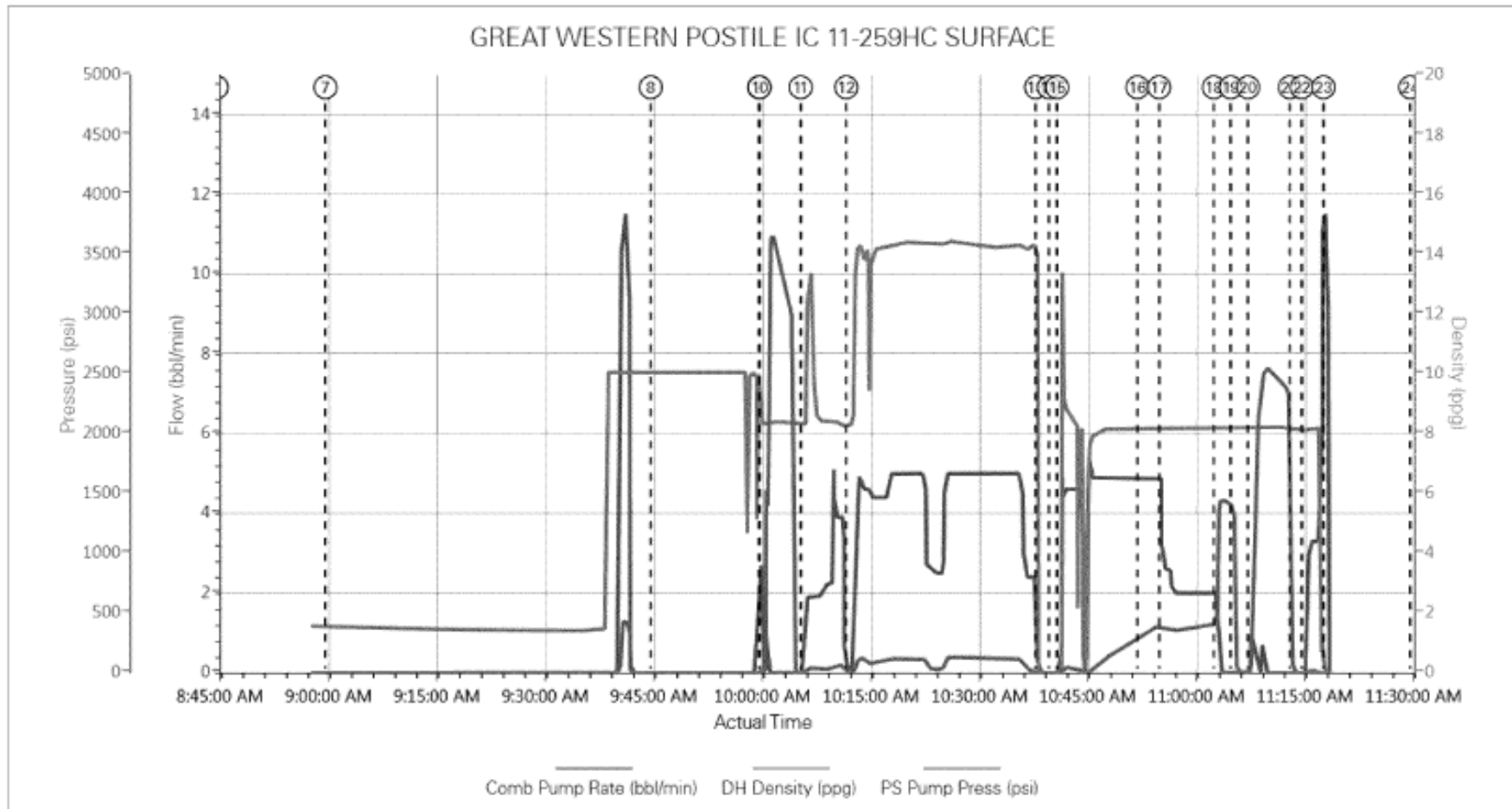
1.4 Job Event Log

Type	Seq. No.	Activity	Graph Label	Date	Time	Source	Comb Pump Rate (bbl/min)	DH Density (ppg)	PS Pump Press (psi)	Comment
Event	1	Call Out	Call Out	8/19/2014	05:00:02	USER				CALLED OUT FOR ON LOCATION AT 0730
Event	2	Depart Yard Safety Meeting	Depart Yard Safety Meeting	8/19/2014	07:45:00	USER				JOURNEY MANGEMENT MEETING PRIOR TO DEPARTURE
Event	3	Depart from Service Center or Other Site	Depart from Service Center or Other Site	8/19/2014	08:00:00	USER				DEPART YARD WITH ALL EQUIPMENT AND MATERIALS,
Event	4	Arrive at Location from Service Center	Arrive at Location from Service Center	8/19/2014	08:30:00	USER				ARRIVE AT LOCATION WITH ALL EQUIPMEN AND MATERIALS, RIG CIRCULATING WHEN HES ARRIVED
Event	5	Pre-Rig Up Safety Meeting	Pre-Rig Up Safety Meeting	8/19/2014	08:40:00	USER				RIG-UP JSA WITH HES CREW
Event	6	Rig-Up Equipment	Rig-Up Equipment	8/19/2014	08:45:00	USER				RIGGED UP ALL SURFACE LINES, AND EQUIPMENT, AND STABBED PLUG CONTAINER,
Event	7	Rig-Up Completed	Rig-Up Completed	8/19/2014	09:00:00	USER	0.00	1.59	-19.00	
Event	8	Pre-Job Safety Meeting	Pre-Job Safety Meeting	8/19/2014	09:45:00	USER	0.00	10.05	-15.00	SAFETY MEETING WITH CUSTOMER REP AND RIG CREW TO DISCUSS JOB SAFETY, AND PUMP SCHEDULE
Event	9	Start Job	Start Job	8/19/2014	09:59:58	COM4	0.00	8.27	30.00	
Event	10	Test Lines	Test Lines	8/19/2014	10:00:03	COM4	0.00	8.29	24.00	@3500 PSI
Event	11	Pump Spacer 1	Pump Spacer 1	8/19/2014	10:05:43	COM4	0.00	8.31	3.00	10 BBLS FRESH WATER WITH 2LBS RED DYE
Event	12	Pump Cement	Pump Cement	8/19/2014	10:12:01	COM4	0.00	8.31	3.00	115 BBLLS, 420 SKS @ 14.2 PPG, 1.54 YIELD, 7.64 GAL/SK, VERIFIED WITH PRESSURIZED SCALES.

Event	13	Shutdown	Shutdown	8/19/2014	10:38:14	COM4	0.00	-0.08	-2.00	SHUT DOWN TO WASH MIXING TUBS, AND TO DROP PLUG.
Event	14	Drop Top Plug	Drop Top Plug	8/19/2014	10:40:04	COM4	0.00	-0.15	-8.00	PRE-LOADED HWE TOP PLUG IN PLUG CONTAINER, VERIFIED BY CUSTOMER REP
Event	15	Pump Displacement	Pump Displacement	8/19/2014	10:41:12	COM4	0.00	-0.13	-9.00	79 BBLS FRESH WATER WITH MEGA-CIDE
Event	16	Other	Spacer Returns to Surface	8/19/2014	10:52:18	COM4	4.90	8.23	313.00	@53 BBLS DISPLACEMENT 10 BBLS TO SURFACE
Event	17	Other	Cement Returns to Surface	8/19/2014	10:55:18	COM4	2.60	8.17	357.00	@63 BBLS DISPLACEMENT, 16 BBLS TO SURFACE
Event	18	Bump Plug	Bump Plug	8/19/2014	11:02:50	USER	2.00	8.16	548.00	FINAL CIRCULATING PRESSURE 384 PSI FINAL LIFT 1368 PSI
Event	19	Check Floats	Check Floats	8/19/2014	11:05:11	USER	0.00	8.21	1052.00	FLOATS HELD, .5 BBLS BACK
Event	20	Pressure Up	Pressure Up	8/19/2014	11:07:34	USER	0.90	8.11	281.00	CASING TEST @ 2400 PSI, DID NOT HOLD, SCREW IN PLUG CONTAINER WAS LEAKING OUT OF THE THREADS.
Event	21	End Job	End Job	8/19/2014	11:13:20	COM4	0.00	8.11	24.00	THANKS AARON SMITH AND CREW
Event	22	Pre-Rig Down Safety Meeting	Pre-Rig Down Safety Meeting	8/19/2014	11:15:00	USER	0.00	8.12	-12.00	RIG-DOWN JSA WITH HES CREW
Event	23	Rig-Down Equipment	Rig-Down Equipment	8/19/2014	11:18:00	USER	11.50	0.01	-10.00	RIGGED DOWN ALL EQUIPMENT
Event	24	Rig-Down Completed	Rig-Down Completed	8/19/2014	11:30:00	USER				
Event	25	Depart Location Safety Meeting	Depart Location Safety Meeting	8/19/2014	11:35:00	USER				JOURNEY MANAGEMENT MEETING PRIOR TO DEPARTURE
Event	26	Depart Location	Depart Location	8/19/2014	11:40:00	USER				DEPARTED LOCATION WITH ALL EQUIPMENT, AND PERSONEL

2.0 Attachments

2.1 GREAT WESTERN OIL & GAS POSTLE IC 11-259HN-Custom Results.png



3.0 Appendix
