

# HALLIBURTON

iCem<sup>®</sup> Service

**GREAT WESTERN OIL & GAS LLC - eBUS**

**For: Arnold Spengler**

Date: Monday, September 29, 2014

**POSTLE IC 11-239HN**

POSTLE IC 11-239HN

Sincerely,  
**Steven Markovich**

Field Ticket Number: 0901695612      Field Ticket Date: Monday, September 29, 2014      Planning Order #: NA

**Bill To:**  
 GREAT WESTERN OIL & GAS LLC - eBUS,  
 DONOTMAIL-1801 BROADWAY STE 500,  
 DENVER, CO, 80202

**Job Name:** 7" Intermediate  
**Order Type:** ZOH  
**Well Name:** POSTLE IC 11-239HN  
**Company Code:** 1100  
**Customer PO No.:** W10831  
**Shipping Point:** FORT LUPTON Shipping Point  
**Sales Office:** ROCKY MOUNTAINS BD  
**Well Type:** HORIZONTAL OIL  
**Well Category:** Development  
**Rig Name/#:** Xtreme 17

**Ship To:**  
 POSTLE IC 11-239HN,WELD,  
 PLATTEVILLE, CO, 80651

Material	Description	QTY	UOM	Unit Amount	Gross Amount	Discount	Net Amount
7522	CMT INTERMEDIATE CASING BOM Cementing Services & Equipment	1	JOB	0.00	0.00		0.00
16091	ZI - PUMPING CHARGE DEPTH FEET/METERS (FT/M)	1 7544 FT	EA	10,733.00	10,733.00	68.000 %	3,434.56
432904	CMT, ROCKIES SG SETUP Cementing Materials	1	EA	0.00	11,086.00		4,514.48
452992	CMT, EconoCem (TM) system	550	SK	0.00	50,498.12		16,159.40
452979	CMT, ExpandaCem (TM) system	115	SK	0.00	17,367.55		5,557.63
2	MILEAGE FOR CEMENTING CREW Number of Units	46 1	MI	5.76	264.96	68.000 %	84.79
1	ZI-MILEAGE FROM NEAREST HES BASE,/UNIT Number of Units	46 1	MI	9.79	450.34	68.000 %	144.11
86954	ZI FUEL SURCHG-CARS/PICKUPS<1 1/2TON Number of Units	46 1	MI	0.23	10.58		10.58
86955	ZI FUEL SURCHG-HEAVY TRKS >1 1/2 TON Number of Units	46 1	MI	0.68	31.28		31.28
87605	FUEL SURCHG-CMT & CMT ADDITIVES NUMBER OF TONS	23 35.379	MI	0.23	187.16		187.16
76400	MILEAGE,CMT MTLs DEL/RET MIN NUMBER OF TONS	23 35.379	MI	3.35	2,725.95	68.000 %	872.30
3965	HANDLE&DUMP SVC CHRg, CMT&ADDITIVES,ZI Unit of Measurement NUMBER OF EACH	896 EA 1	CF	5.49	4,919.04	68.000 %	1,574.09
483826	SBM, CMT, Tuned Spacer III	30	BBL	293.00	8,790.00	68.000 %	2,812.80
100003681	CHEM, BARITE, BULK Barite	45	SK	31.07	1,398.15	68.000 %	447.41
100008028	CHEM, SUGAR,GRANULATED, 50LB BAG	50	LB	6.96	348.00	68.000 %	111.36
101229888	PLUG,CMTG, TOP, 7,HWE,5.66 MIN/6.54 MAX CS	1	EA	289.00	289.00	68.000 %	92.48
<b>Totals USD</b>					<b>\$ 109,099.13</b>	<b>\$ 73,064.70</b>	<b>\$ 36,034.43</b>

Field Ticket Signature

Field Ticket Number: 0901695612      Field Ticket Date: Monday, September 29, 2014      Planning Order #: NA

**Bill To:**  
GREAT WESTERN OIL & GAS LLC - eBUS,  
DONOTMAIL-1801 BROADWAY STE 500,  
DENVER, CO, 80202

**Job Name:** 7" Intermediate  
**Order Type:** ZOH  
**Well Name:** POSTLE IC 11-239HN  
**Company Code:** 1100  
**Customer PO No.:** W10831  
**Shipping Point:** FORT LUPTON Shipping Point  
**Sales Office:** ROCKY MOUNTAINS BD  
**Well Type:** HORIZONTAL OIL  
**Well Category:** Development  
**Rig Name/#:** Xtreme 17

**Ship To:**  
POSTLE IC 11-239HN,WELD,  
PLATTEVILLE, CO, 80651

THIS OUTPUT DOES NOT INCLUDE TAXES. APPLICABLE SALES TAX WILL BE BILLED ON THE FINAL INVOICE. CUSTOMER HEREBY ACKNOWLEDGES RECEIPT OF THE MATERIALS AND SERVICES DESCRIBED ABOVE, ON ANY PRECEDING PAGES, AND ATTACHED DOCUMENTS.

Gross Amount Total: \$ 109,099.13  
Item Discount Total: \$ 73,064.70  
Net Amount Total: \$ 36,034.43 USD

Customer Representative Signature:  
  
Arnold Spengler  
Customer Representative

Date:  
  
Steven Markovich  
Halliburton Representative

Was our HSE performance satisfactory? (Health, Safety, Environment)  
 Yes     No

Were you satisfied with our equipment?  
 Yes     No

Were you satisfied with our people?  
 Yes     No

Comments:



The Road to Excellence Starts with Safety

Sold To #: 346459	Ship To #: 3472112	Quote #:	Sales Order #: 0901695612
Customer: GREAT WESTERN OIL & GAS LLC - eBUS		Customer Rep: Arnold Spengler	
Well Name: POSTLE IC	Well #: 11-239HN	API/UWI #: 05-123-39320-00	
Field: WATTENBERG	City (SAP): PLATTEVILLE	County/Parish: WELD	State: COLORADO
Legal Description: SW NW-11-3N-68W-1557FNL-452FWL			
Contractor:		Rig/Platform Name/Num: Xtreme 17	
Job BOM: 7522			
Well Type: HORIZONTAL OIL			
Sales Person: HALAMERICA\HB21661		Srvc Supervisor: Steven Markovich	

**Job**

Formation Name	
Formation Depth (MD)	Top Bottom
Form Type	BHST
Job depth MD	7544ft Job Depth TVD
Water Depth	Wk Ht Above Floor
Perforation Depth (MD)	From To

**Well Data**

Description	New / Used	Size in	ID in	Weight lbm/ft	Thread	Grade	Top MD ft	Bottom MD ft	Top TVD ft	Bottom TVD ft
Casing	0	9.625	8.921	36			0	1070	0	0
Casing	0	7	6.276	26		L-80	0	7544	0	0
Open Hole Section			8.75				1070	7554	0	0

**Tools and Accessories**

Type	Size in	Qty	Make	Depth ft	Type	Size in	Qty	Make
Guide Shoe	7	1		7544	Top Plug	7	1	HES
Float Shoe	7	1			Bottom Plug	7	1	HES
Float Collar	7	1			SSR plug set	7	1	HES
Insert Float	7	1			Plug Container	7	1	HES
Stage Tool	7	1			Centralizers	7	1	HES

**Miscellaneous Materials**

Gelling Agt	Conc	Surfactant	Conc	Acid Type	Qty	Conc
Treatment Fld	Conc	Inhibitor	Conc	Sand Type	Size	Qty

**Fluid Data**

Stage/Plug #: 1										
Fluid #	Stage Type	Fluid Name	Qty	Qty UoM	Mixing Density lbm/gal	Yield ft <sup>3</sup> /sack	Mix Fluid Gal	Rate bbl/min	Total Mix Fluid Gal	
1	11.5 lb/gal Tuned Spacer III	Tuned Spacer III	30	bbl	11.5	3.73	24	5		
149.45 lbm/bbl		BARITE, BULK (100003681)								

Fluid #	Stage Type	Fluid Name	Qty	Qty UoM	Mixing Density lbm/gal	Yield ft <sup>3</sup> /sack	Mix Fluid Gal	Rate bbl/mi n	Total Mix Fluid Gal
2	Lead Cement	ECONOCEM (TM) SYSTEM	550	sack	12.7	1.89		4	9.97
9.97 Gal		FRESH WATER							
Fluid #	Stage Type	Fluid Name	Qty	Qty UoM	Mixing Density lbm/gal	Yield ft <sup>3</sup> /sack	Mix Fluid Gal	Rate bbl/mi n	Total Mix Fluid Gal
3	Tail Cement	EXPANDACEM (TM) SYSTEM	115	sack	13.8	1.67		4	7.71
7.71 Gal		FRESH WATER							
Fluid #	Stage Type	Fluid Name	Qty	Qty UoM	Mixing Density lbm/gal	Yield ft <sup>3</sup> /sack	Mix Fluid Gal	Rate bbl/mi n	Total Mix Fluid Gal
4	Displacement	Displacement	300	bbl	8.33				
Cement Left In Pipe		Amount	Reason		Shoe Joint				
		45 ft							
Comment 30bbbls of spacer to surface									

# HALLIBURTON

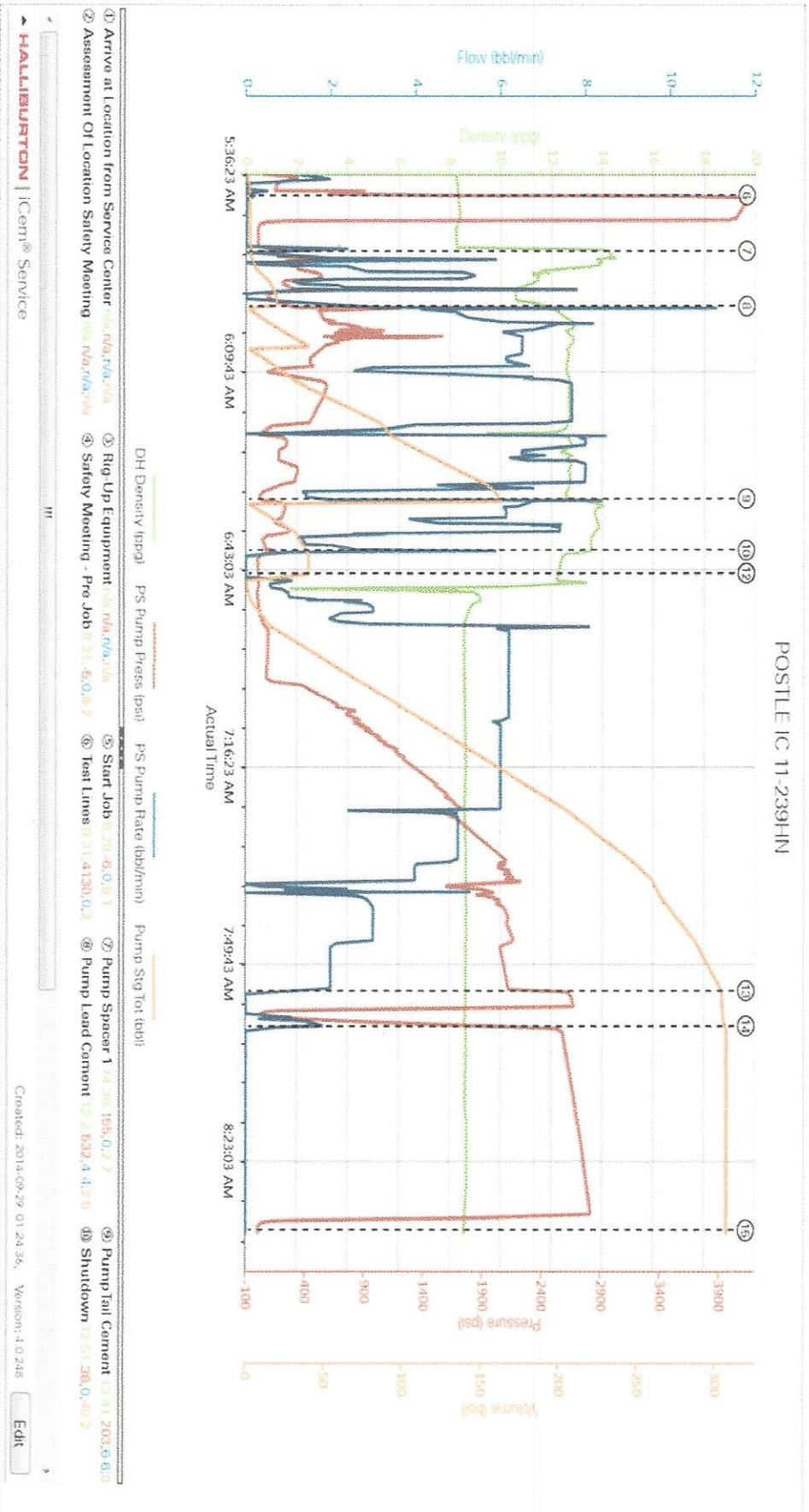
GREAT WESTERN OIL & GAS LLC - EBUS  
 POSTLE IC 11-239HN  
 POSTLE IC 11-239HN

## 3.5 Job Event Log

Type	Seq. No.	Activity	Graph Label	Date	Time	Source	DH Density (ppg)	PS Pump Press (psi)	PS Pump Rate (bbt/mh)	Pump Stg Tot (bbt)	Comments
Event	1	Arrive at location from Service Center	Arrive at location from Service Center	9/29/2014	00:30:00	USER					Arrived on location rig still running casing approx 6 joints
Event	2	Assessment Of Location Safety Meeting	Assessment Of Location Safety Meeting	9/29/2014	00:40:00	USER					JSA and Hazard hunt with HES crew
Event	3	Rig-Up Equipment	Rig-Up Equipment	9/29/2014	04:30:00	USER					Rigged up HES lines and equipment
Event	4	Safety Meeting - Pre Job	Safety Meeting - Pre Job	9/29/2014	05:15:00	USER	8.31	-5.00	0.00	8.2	JSA with HES and Rig crew on job procedure
Event	5	Start Job	Start Job	9/29/2014	05:34:13	COM6	8.28	-6.00	0.00	9.1	
Event	6	Test Lines	Test Lines	9/29/2014	05:40:27	COM6	8.31	4129.00	0.00	2.0	Test lines to 4000psi
Event	7	Pump Spacer 1	Pump Spacer 1	9/29/2014	05:49:48	COM6	14.36	156.00	0.00	2.7	Pump 300bbls of 11.5ppg Spacer
Event	8	Pump Lead Cement	Pump Lead Cement	9/29/2014	05:59:17	COM6	12.17	520.00	4.40	2.5	Pump 185bbls of 12.7ppg lead cement
Event	9	Pump Tail Cement	Pump Tail Cement	9/29/2014	06:31:36	COM6	13.41	201.00	6.60	0.1	Pump 34bbls of 13.8ppg tail cement
Event	10	Shutdown	Shutdown	9/29/2014	06:40:21	COM6	12.51	38.00	0.00	40.2	
Event	11	Drop Top Plug	Drop Top Plug	9/29/2014	06:44:12	COM6	12.24	2.00	0.00	40.2	Plug pre loaded in HES head
Event	12	Pump Displacement	Pump Displacement	9/29/2014	06:44:17	COM6	12.25	2.00	0.00	40.2	Pump 300bbls of fresh water with biocide. Spacer to surface at 270 away giving us 30 bbls of spacer to surface
Event	13	Bump Plug	Bump Plug	9/29/2014	07:54:48	COM6	8.61	2648.00	0.00	304.3	Bumped plug at 2106psi and took 500 over and held for 2 mins, checked floats, floats good
Event	14	Test Lines	Test Lines	9/29/2014	08:00:46	COM6	8.68	2566.00	0.00	307.0	2500psi casing test for 30 mins
Event	15	End Job	End Job	9/29/2014	08:35:16	COM6	8.53	6.00	0.00	307.1	Thank you Markovich and

## 4.0 Attachments

4.1 POSTLE IC 11-239HN-Custom Results.png



Field Ticket Signature

Field Ticket Number: 0901695612      Field Ticket Date: Monday, September 29, 2014      Planning Order #: NA

**Bill To:**  
GREAT WESTERN OIL & GAS LLC - eBUS,  
DONOTMAIL-1801 BROADWAY STE 500,  
DENVER, CO, 80202

**Job Name:** 7" Intermediate  
**Order Type:** ZOH  
**Well Name:** POSTLE IC 11-239HN  
**Company Code:** 1100  
**Customer PO No.:** W10831  
**Shipping Point:** FORT LUPTON Shipping Point  
**Sales Office:** ROCKY MOUNTAINS BD  
**Well Type:** HORIZONTAL OIL  
**Well Category:** Development  
**Rig Name/#:** Xtreme 17

**Ship To:**  
POSTLE IC 11-239HN,WELD,  
PLATTEVILLE, CO, 80651

THIS OUTPUT DOES NOT INCLUDE TAXES. APPLICABLE SALES TAX WILL BE BILLED ON THE FINAL INVOICE. CUSTOMER HEREBY ACKNOWLEDGES RECEIPT OF THE MATERIALS AND SERVICES DESCRIBED ABOVE, ON ANY PRECEDING PAGES, AND ATTACHED DOCUMENTS.

Gross Amount Total: \$ 109,099.13  
Item Discount Total: \$ 73,064.70  
Net Amount Total: \$ 36,034.43 USD

  
Customer Representative Signature:

9-29-2014  
Date:

Arnold Spengler  
Customer Representative

Steven Markovich  
Halliburton Representative

Was our HSE performance satisfactory? (Health, Safety, Environment)

Yes     No

Were you satisfied with our equipment?

Yes     No

Were you satisfied with our people?

Yes     No

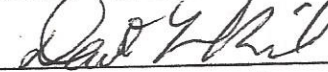
Comments:



Postle IC 11-239 HN  
Property #: W10550

Codes:

Major: 8400    Minor: 418

Signature: 

Amount: \$ 36,034<sup>43</sup>