

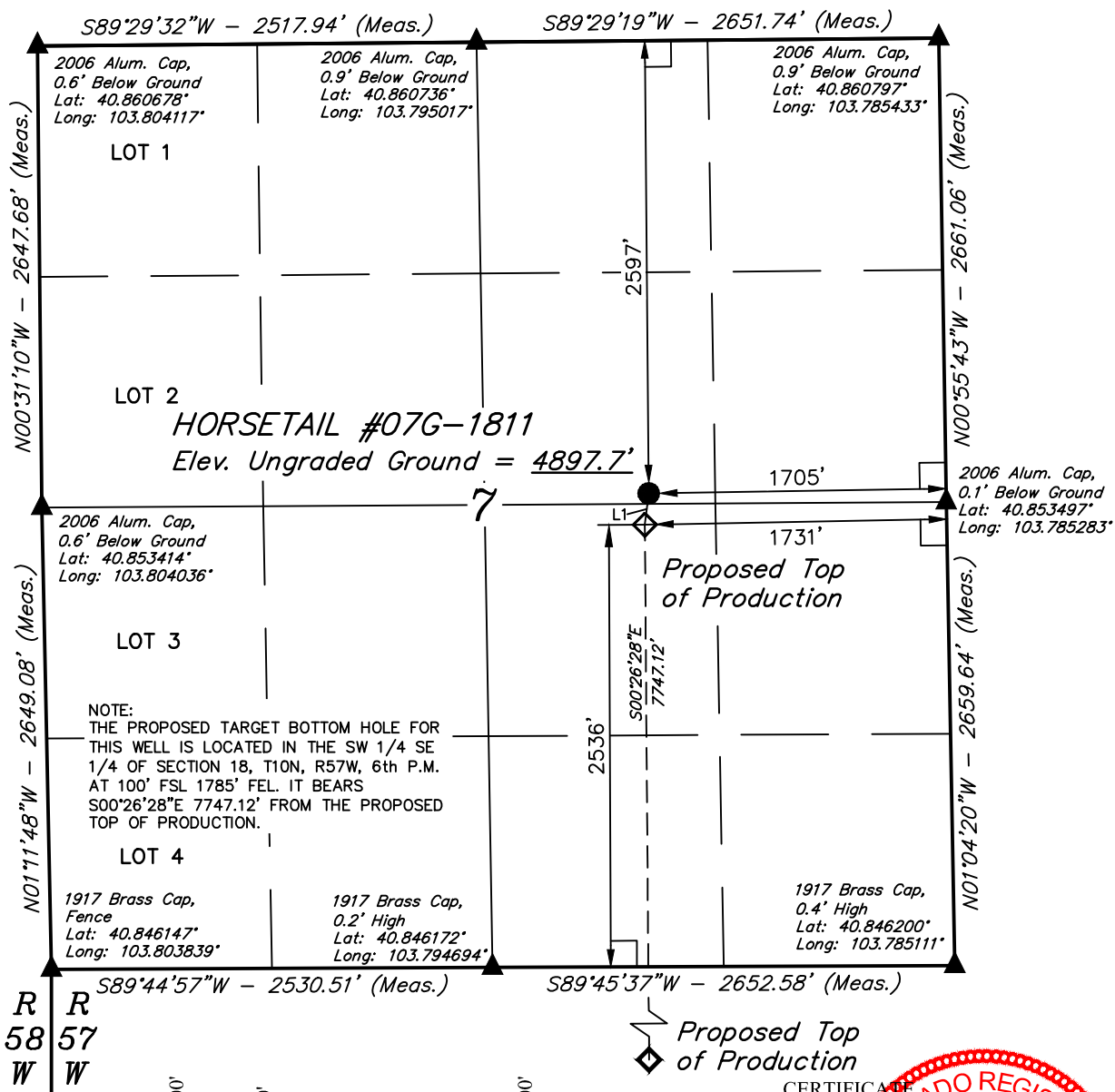
LEGEND:

- = 90° SYMBOL
- = PROPOSED WELLHEAD.
- = TARGET BOTTOM HOLE.
- = SECTION CORNERS LOCATED.
- = PROPOSED TOP OF PRODUCTION.

T10N, R57W, 6th P.M.

LINE TABLE

LINE	DIRECTION	LENGTH
L1	S07°06'09"W	180.87'



PDOP = 1.3

NAD 83 (SURFACE LOCATION)	NAD 83 (PROPOSED TOP OF PRODUCTION)
LATITUDE = 40°51'13.08" (40.853633)	LATITUDE = 40°51'11.31" (40.853142)
LONGITUDE = 103°47'29.22" (103.791450)	LONGITUDE = 103°47'29.52" (103.791533)
NAD 27 (SURFACE LOCATION)	NAD 27 (PROPOSED TOP OF PRODUCTION)
LATITUDE = 40°51'13.13" (40.853647)	LATITUDE = 40°51'11.36" (40.853156)
LONGITUDE = 103°47'27.42" (103.790950)	LONGITUDE = 103°47'27.71" (103.791031)

BASIS OF BEARINGS

BASIS OF BEARINGS IS A G.P.S. OBSERVATION

BASIS OF ELEVATION

SPOT ELEVATION LOCATED AT THE NORTHEAST CORNER OF SECTION 15, T9N, R58W, 6th P.M. TAKEN FROM THE GATEHOOK SPRING, QUADRANGLE, COLORADO, WELD COUNTY, 7.5 MINUTE QUAD (TOPOGRAPHIC MAP) PUBLISHED BY THE UNITED STATES DEPARTMENT OF THE INTERIOR, GEOLOGICAL SURVEY. SAID ELEVATION IS MARKED AS BEING 4679 FEET.



UELS, LLC
Corporate Office * 85 South 200 East
Vernal, UT 84078 * (435) 789-1017

WHITING OIL & GAS CORP.




HORSETAIL #07G-1811 (SURFACE LOCATION)
SW 1/4 NE 1/4, SECTION 7, T10N, R57W, 6th P.M.
WELD COUNTY, COLORADO

SURVEYED BY: DALLAS NIELSEN, D.W.	DATE: 02-27-15
DRAWN BY: K.B.	DATE DRAWN: 11-05-14
SCALE: 1" = 1000'	REVISED: 02-11-16 T.B.
WELL LOCATION PLAT	

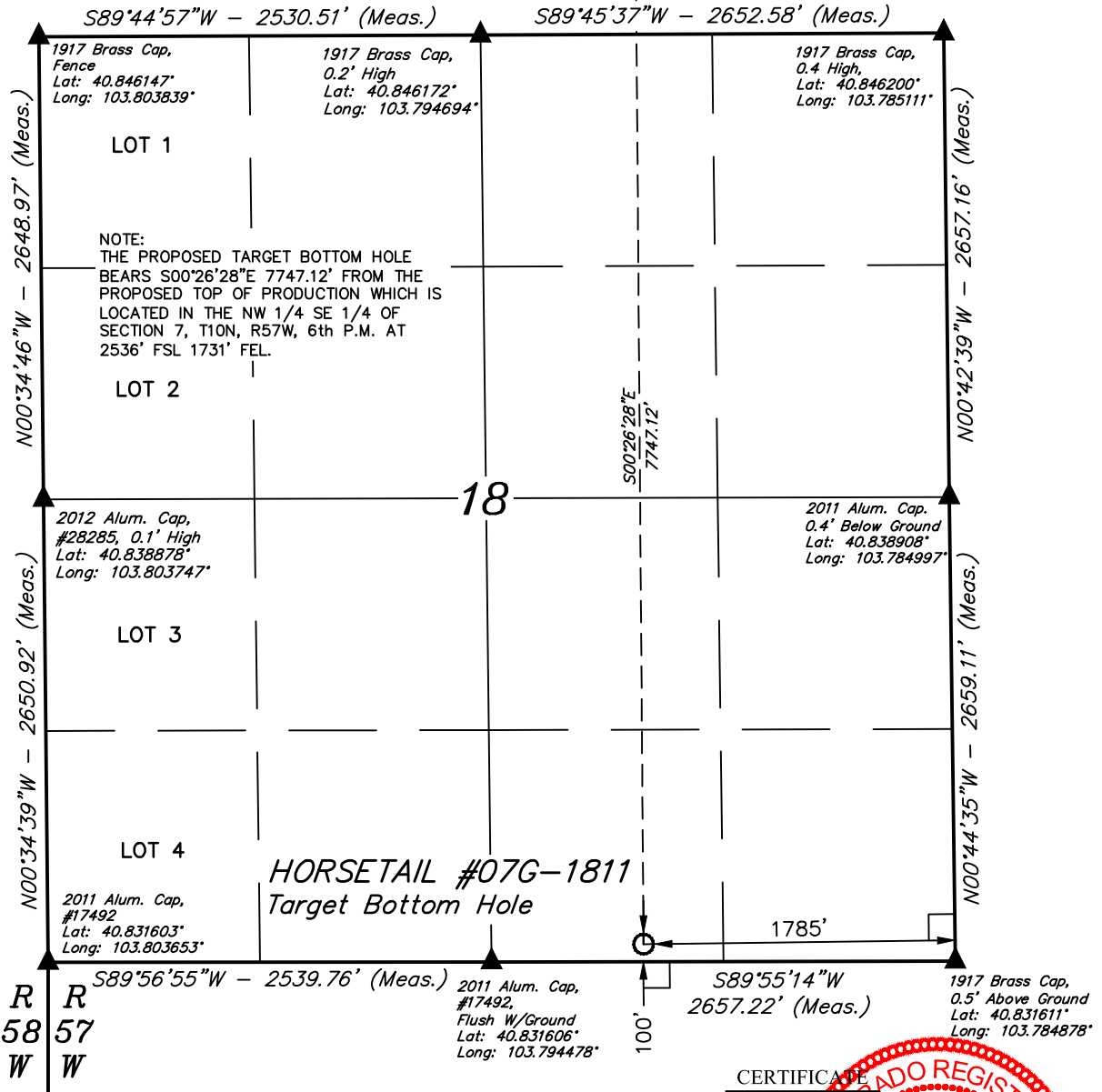
THIS IS TO CERTIFY THAT THE ABOVE PLAT WAS PREPARED FROM FIELD NOTES OF ACTUAL SURVEYS MADE BY ME OR UNDER MY SUPERVISION AND THAT THE SAME ARE TRUE AND CORRECT TO THE BEST OF MY KNOWLEDGE AND BELIEF.

REGISTERED LAND SURVEYOR
REGISTRATION NO. 28285
STATE OF COLORADO

T10N, R57W, 6th P.M.

 = TARGET BOTTOM HOLE.
 = SECTION CORNERS LOCATED.
 = PROPOSED TOP OF PRODUCTION.

*Proposed Top
of Production* 



LATITUDE = 40°49'54.78" (40.831883)
LONGITUDE = 103°47'28.80" (103.791333)
NAD 27 (TARGET BOTTOM HOLE)
LATITUDE = 40°49'54.83" (40.831897)
LONGITUDE = 103°47'26.99" (103.790831)



SPOT ELEVATION LOCATED AT THE NORTHEAST CORNER OF SECTION 15, T9N, R58W, 6th P.M. TAKEN FROM THE GATEHOOK SPRING, QUADRANGLE, COLORADO, WELD COUNTY, 7.5 MINUTE QUAD (TOPOGRAPHIC MAP) PUBLISHED BY THE UNITED STATES DEPARTMENT OF THE INTERIOR, GEOLOGICAL SURVEY. SAID ELEVATION IS MARKED AS BEING 4679 FEET.



**Corporate Office * 85 South 200 East
Vernal, UT 84078 * (435) 789-1017**



HORSETAIL #07G-1811 (TARGET BOTTOM HOLE)
SW 1/4 SE 1/4, SECTION 18, T10N, R57W, 6th P.M.
WELD COUNTY, COLORADO

SURVEYED BY: DALLAS NIELSEN, D.W.	DATE: 02-27-15
DRAWN BY: K.B.	DATE DRAWN: 11-05-14
SCALE: 1" = 1000'	REVISED: 02-11-16 T.B.

WELL LOCATION PLAT