



February 15, 2016

Mr. Stan Spencer
Colorado Oil and Gas Conservation Commission
Environmental Protection Specialist
Northwest Region
Rifle, CO 81650

RE: Notification Remediation Completion
PCU T18X-12G Produced Water Release
Form 19 DOC #400984474
API# 05-103-10417

Dear Mr. Spencer,

XTO Energy (XTO) completed remediation of the PCU T18X-12G Produced Water Release on February 8, 2016. XTO is submitting the COGCC Table 910-1 compliance confirmation data from the area of the release adjacent to the secondary containment. All results were below standards with the exception of Arsenic (4.4 mg/kg), within the approved background level of (7.7 mg/kg).

The PCU T18X-12G location is located immediately west and contiguous with the PCU 297-11B location. See the COGCC approved Site Investigation and Remediation Workplan for Pit Closure for the PCU 297-11B location (Rem # 8439, Doc # 2148974) that established a background Arsenic level of 7.7 mg/kg

XTO Energy is requesting closure of and Notice of Completion for Form 19 Spill Report DOC #400984474. If you should have any questions or comments please feel free to contact me at your earliest convenience (970) 675-4122.

Respectfully,



Jessica Dooling

Piceance EH&S Supervisor

Jessica_dooling@xtoenergy.com

Enclosures: Table 910-1 Data
Site Plan

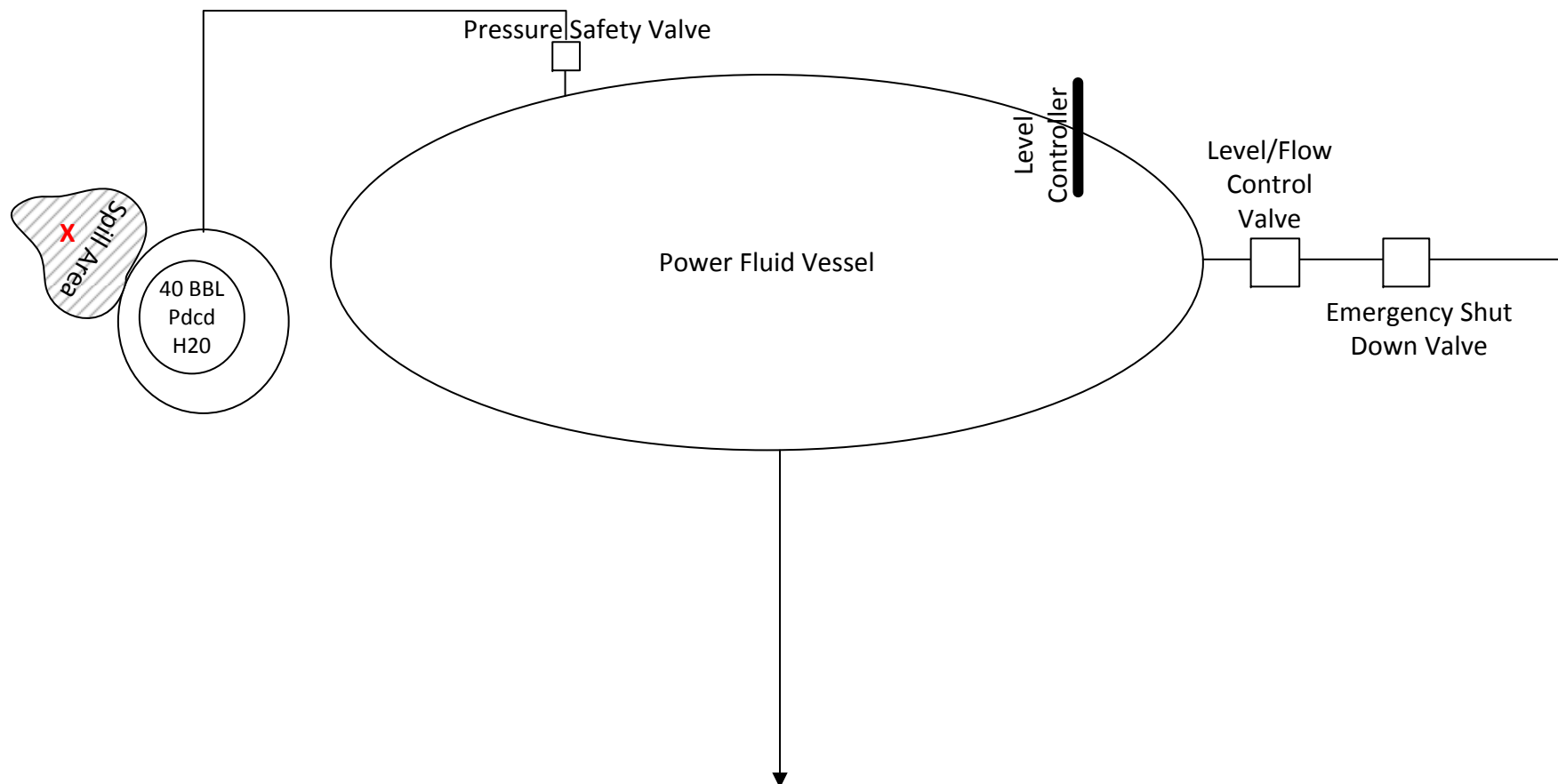
Table 1
Location: PCU T18X-12G
PSV Produced Water Spill

Last update 2/15/2016

Analytical Parameter (with units)	Table 910-1 Confirmation Sample	PCU 297-11B Background As					COGCC Table 910-1 Concentration Levels	Maximum based on Background
		#1	#2	#3	#4	#5		
Accutest Job #	D79697 (2/4/16)	D26543 (8/11/11)					-	-
Sample type (Composite/Discrete)	D	D	D	D	D	D	-	-
TPH (GRO) (mg/Kg)	23.4	-	-	-	-	-	-	-
TPH (DRO) (mg/Kg)	131	-	-	-	-	-	-	-
TPH (GRO + DRO) (mg/Kg)	154	-	-	-	-	-	500	-
Benzene (mg/Kg)	0.014	-	-	-	-	-	0.170	-
Toluene (mg/Kg)	0.085	-	-	-	-	-	85	-
Ethylbenzene (mg/Kg)	0.019	-	-	-	-	-	100	-
Xylenes (total) (mg/Kg)	0.4210	-	-	-	-	-	175	-
Acenaphthene (mg/Kg)	ND	-	-	-	-	-	1000	-
Anthracene (mg/Kg)	ND	-	-	-	-	-	1000	-
Benzo(A)anthracene (mg/Kg)	ND	-	-	-	-	-	0.22	-
Benzo(B)fluoranthene (mg/Kg)	0.008	-	-	-	-	-	0.22	-
Benzo(K)fluoranthene (mg/Kg)	ND	-	-	-	-	-	2.2	-
Benzo(A)pyrene (mg/Kg)	0.012	-	-	-	-	-	0.022	-
Chrysene (mg/Kg)	0.009	-	-	-	-	-	22	-
Dibenzo(A,H)anthracene (mg/Kg)	ND	-	-	-	-	-	0.022	-
Fluoranthene (mg/Kg)	0.003	-	-	-	-	-	1000	-
Fluorene (mg/Kg)	0.013	-	-	-	-	-	1000	-
Indo(1,2,3,C,D)pyrene (mg/Kg)	ND	-	-	-	-	-	0.22	-
Napthalene (mg/Kg)	0.025	-	-	-	-	-	23	-
Pyrene (mg/Kg)	0.012	-	-	-	-	-	1000	-
Electrical Conductivity (mmhos/cm)	1.070	-	-	-	-	-	4	-
Sodium Adsorption Ratio (SAR)	4.73	-	-	-	-	-	12	-
pH	8.59	-	-	-	-	-	6-9	-
Arsenic (mg/kg)	4.4	3.5	7.0	4.7	3.9	4.1	0.39	7.7
Barium (mg/kg)	363	-	-	-	-	-	15000	-
Cadmium (mg/kg)	<1.1	-	-	-	-	-	70	-
Chromium (III) (mg/Kg)	28	-	-	-	-	-	120000	-
Chromium (VI) (mg/Kg)	<1.0	-	-	-	-	-	23	-
Copper (mg/kg)	11.2	-	-	-	-	-	3100	-
Lead (inorganic) (mg/kg)	9.4	-	-	-	-	-	400	-
Mercury (mg/kg)	<0.096	-	-	-	-	-	23	-
Nickel (mg/kg)	14.7	-	-	-	-	-	1600	-
Selenium (mg/kg)	<5.5	-	-	-	-	-	390	-
Silver (mg/kg)	<3.3	-	-	-	-	-	390	-
Zinc (mg/kg)	41.5	-	-	-	-	-	23000	-
% Solids	87.2	96.5	78.1	85.2	96.8	93.5	-	-

Notes:

- 1) ND = not detectable to the laboratory detection limit.
- 2) Results highlighted in gray exceed Table 910-1, but are within area background levels.
- 3) "-" indicates no analysis.
- 4) Background Arsenic sample results are from the PCU 297-11B location, located immediately west and contiguous with the PCU T18X-12G location.



X Table 910-1 Confirmation Sample Location



PCU T18X-12G PSV PRODUCED WATER
Lat. 39.88574 Long. 108.23818

Site Plan

