

# RADIAL CEMENT BOND LOG GAMMA RAY CCL

Company	ANADARKO PETROLEUM CORP.		
Well	WEBBER 11-4		
Field	WATTENBERG		
County	WELD	State	COLORADO
Location:	API # : 05-123-14830		Other Services
LAT : 40.25910 LONG: -10479020			
NW/NW			
Permanent Datum	GL	Elevation	4787'
Log Measured From	KB 11'		
Drilling Measured From	KB		
SEC 4 TWP 3N RGE 66W			
Date	1-13-2016		
Run Number	ONE		
Depth Driller	7917'		
Depth Logger	4620'		
Bottom Logged Interval	4611'		
Top Log Interval	SURFACE		
Open Hole Size	7 7/8		
Type Fluid	WATER		
Density / Viscosity	1.0		
Max. Recorded Temp.	186 DEG F		
Estimated Cement Top	4097/398'		
Time Well Ready	N/A		
Time Logger on Bottom	N/A		
Equipment Number	3812		
Location	GREELEY		
Recorded By	N.POLLOCK		
Witnessed By	RIGO V.		
Borehole Record			
Run Number	Bit	From	To
		Size	Weight
		From	To
Casing Record	Size	Wgt/Ft	Top
Surface String	8.63	24#	SURFACE
Prot. String			
Production String	4.5	11.6#	SURFACE
Liner			7419'

<<< Fold Here >>>

All interpretations are opinions based on inferences from electrical or other measurements and we cannot and do not guarantee the accuracy or correctness of any interpretation, and we shall not, except in the case of gross or willful negligence on our part, be liable or responsible for any loss, costs, damages, or expenses incurred or sustained by anyone resulting from any interpretation made by any of our officers, agents or employees. These interpretations are also subject to our general terms and conditions set out in our current Price Schedule.

## Comments

CORRELATED 0.5' IN HOLE TO BRANDEX LOG RAN ON 12-14-1990

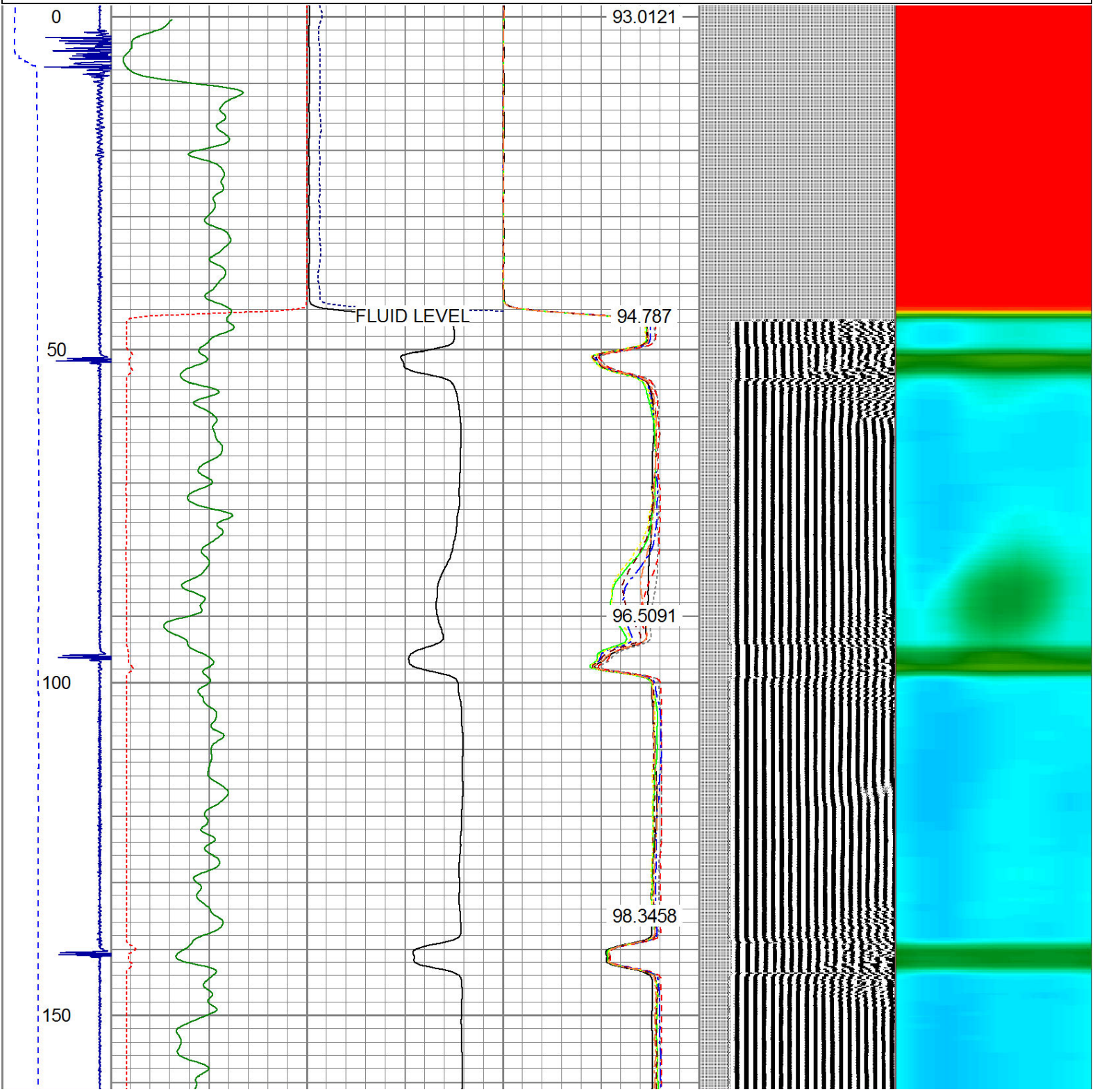
RAN CBL TO VERIFY CEMENT TOP

THANK YOU FOR USING IPS!!

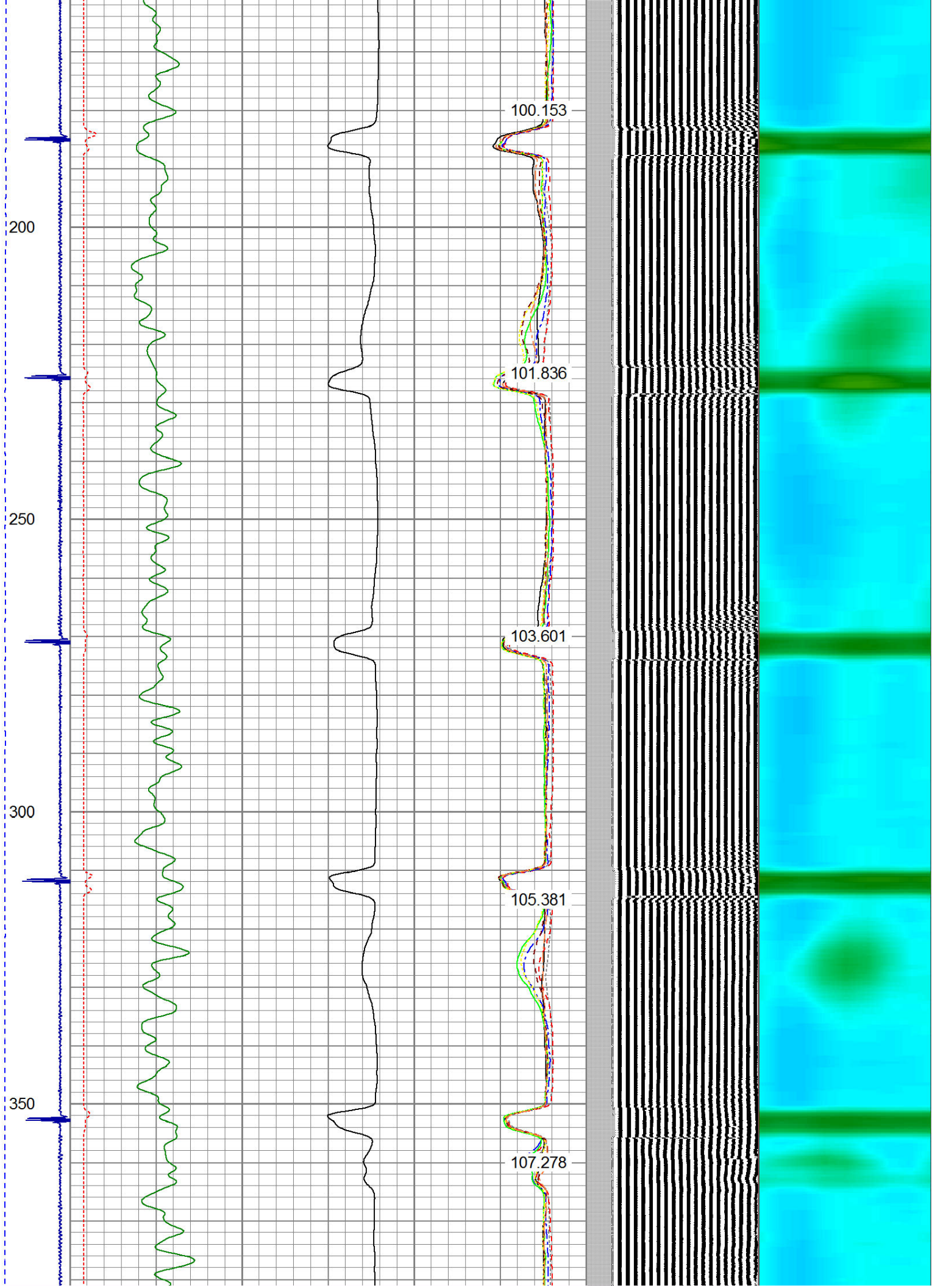
Sensor	Offset (ft)	Schematic	Description	Len (ft)	OD (in)	Wt (lb)
CENT	19.08					

Tool Joint	Tool Joint Length (ft)	Tool Joint Weight (lb)	Tool Joint O.D. (in)	Tool Joint Description	Tool Joint Weight (lb)	Tool Joint O.D. (in)	Tool Joint Description
PTS275	2.83	2.75					
HEADVOLT RBT	16.25						
IntTemp	14.83						
WVFS3FT	11.58						
WVFCAL	11.58						
WVFS1	11.58						
WVFS2	11.58						
WVFS3	11.58						
WVFS4	11.58						
WVFS5	11.58						
WVFS6	11.58						
WVFS7	11.58						
WVFS8	11.58						
WVFS5FT	10.58						
CNLSC	6.00						
CNSSC	5.17						
GR	4.33						
CCL	3.64						
GR	0.90						
<p>Dataset: webber 11-4.db: field/well/run1/pass11</p> <p>Total Length: 19.08 ft</p> <p>Total Weight: 160.00 lb</p> <p>O.D. 2.75 in</p>							

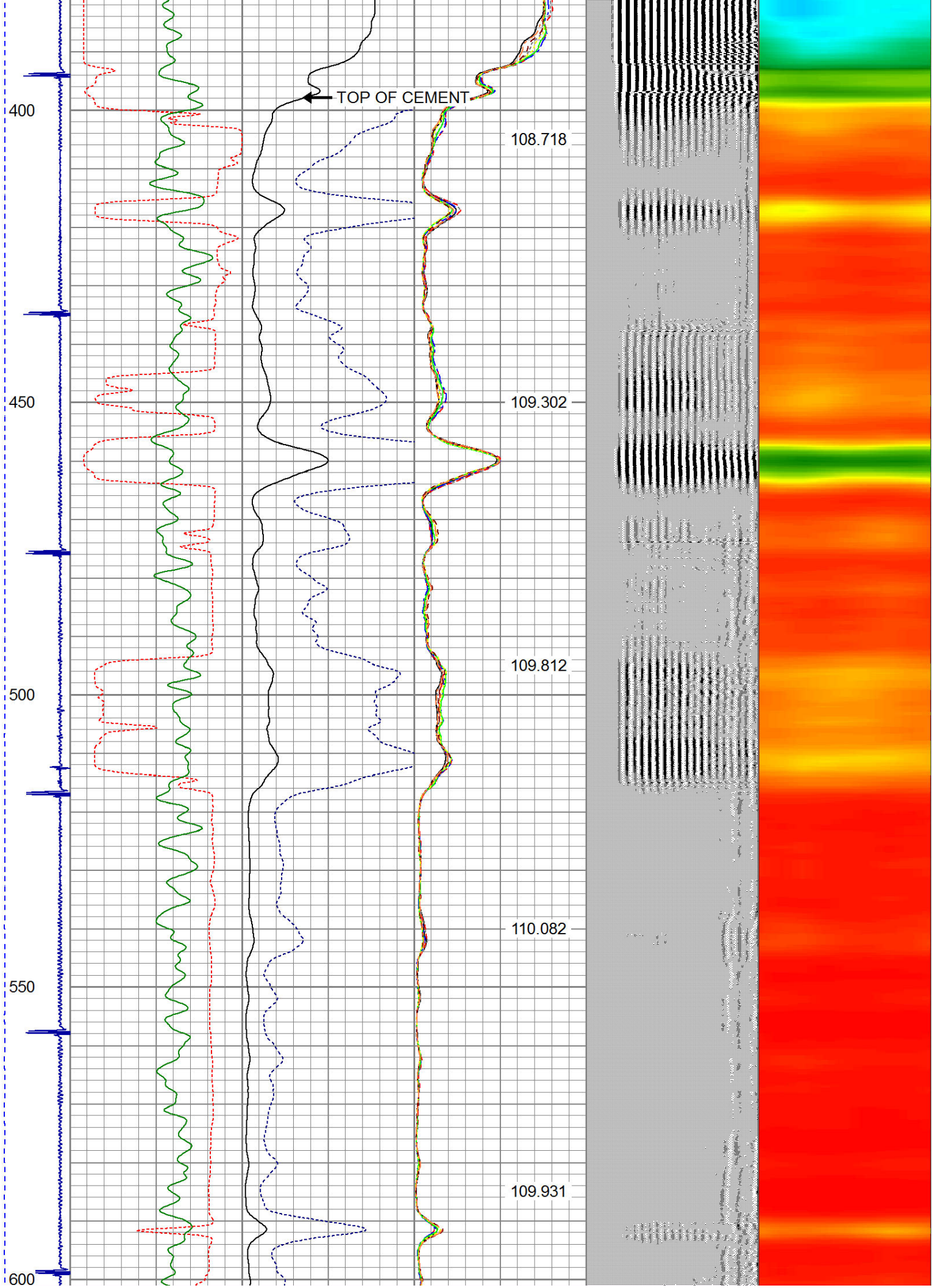
-9	CCL	1	200	TT (usec)	1000	0	AMP (mV)	100	0	AMPS1	100	200	VDL	1200	1	Cement Map	8
LSPD			0	GR (cps)	200	0	AMPx5 (mV)	20	0	AMPS2	100				1		100
(ft/min)			200	GR (cps)	400				0	AMPS3	100						
0									0	AMPS4	100						
									0	AMPS5	100						
									0	AMPS6	100						
									0	AMPS7	100						
									0	AMPS8	100						
										IntTemp							
										(degF)							



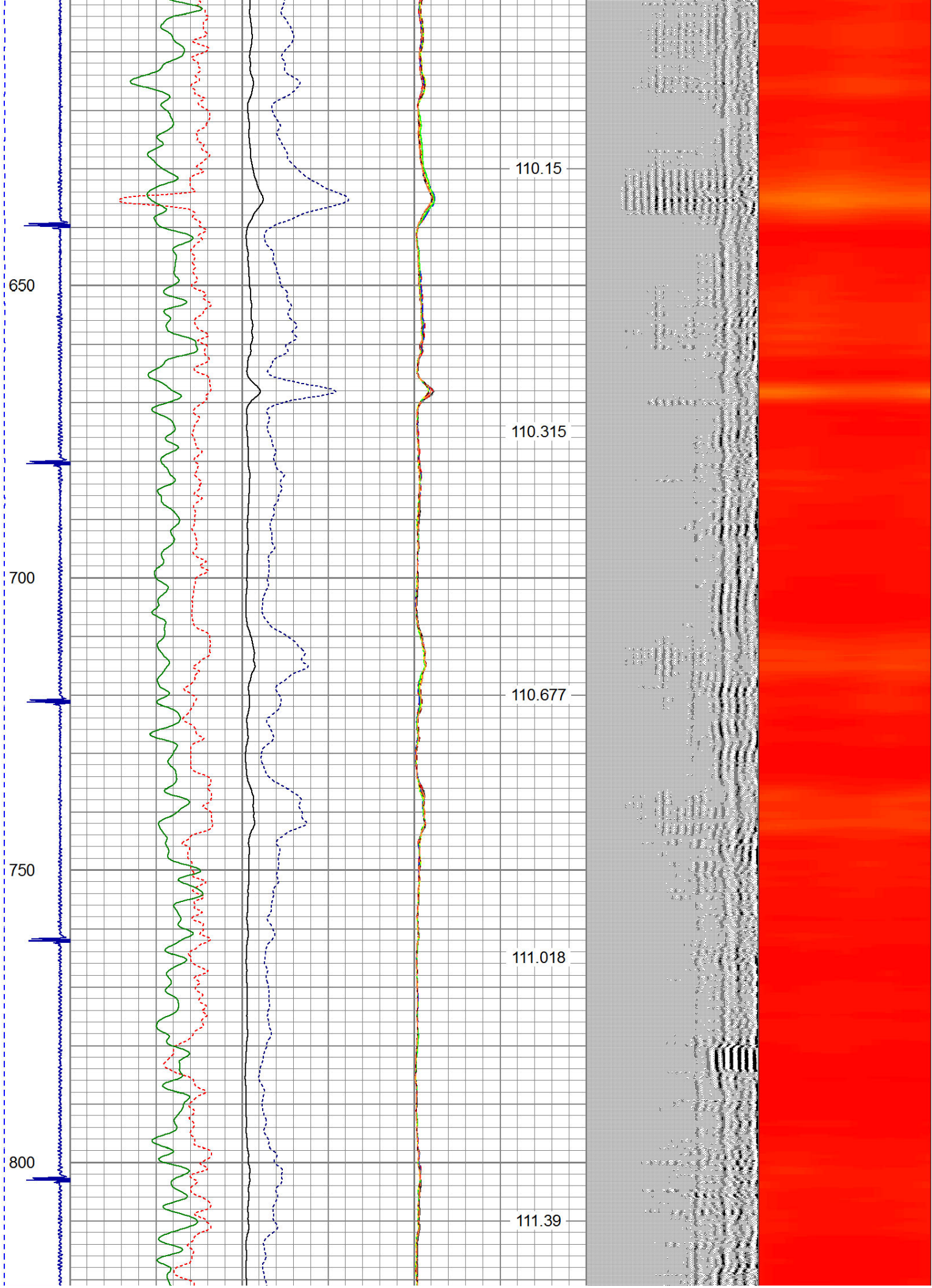




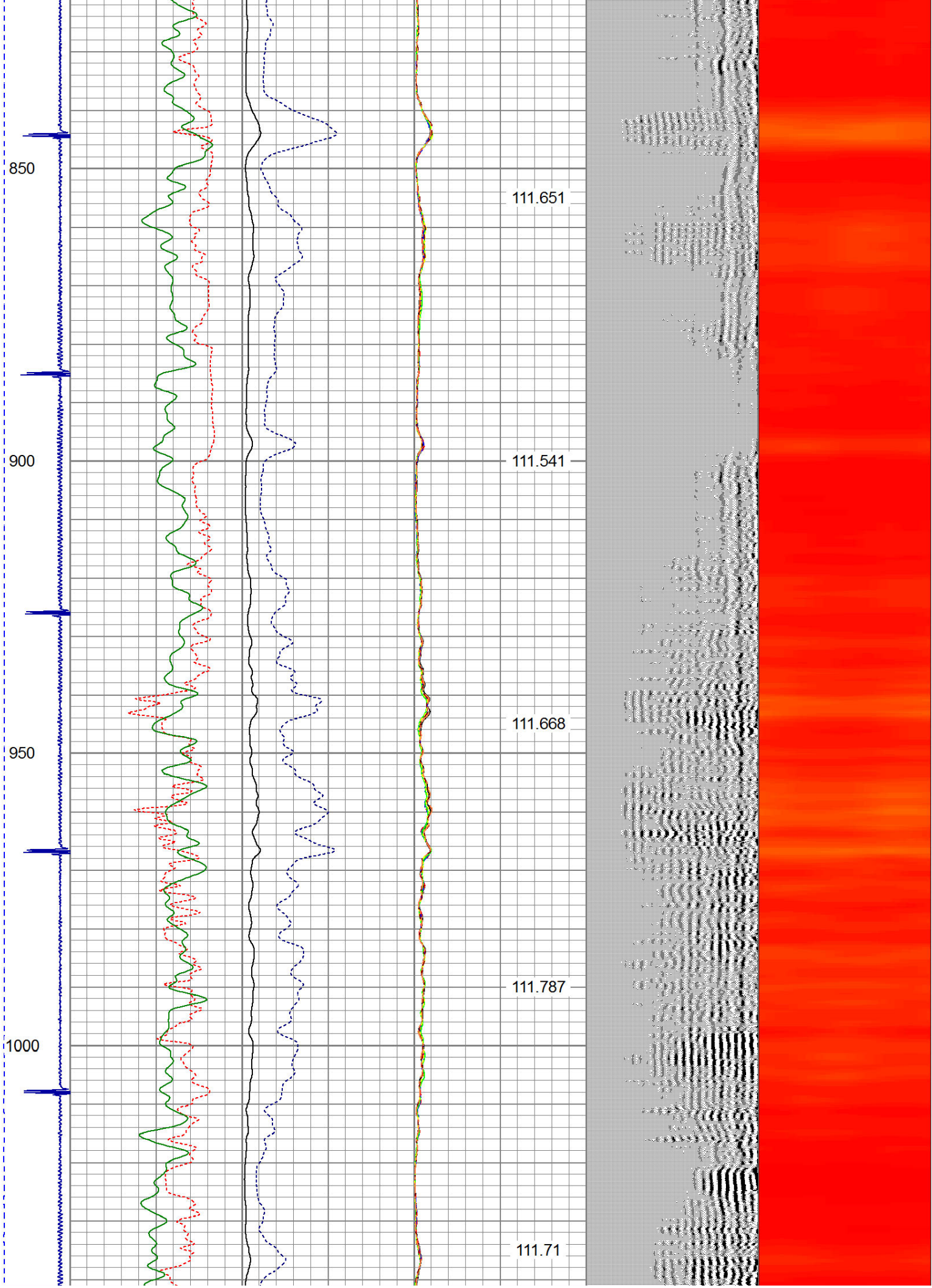




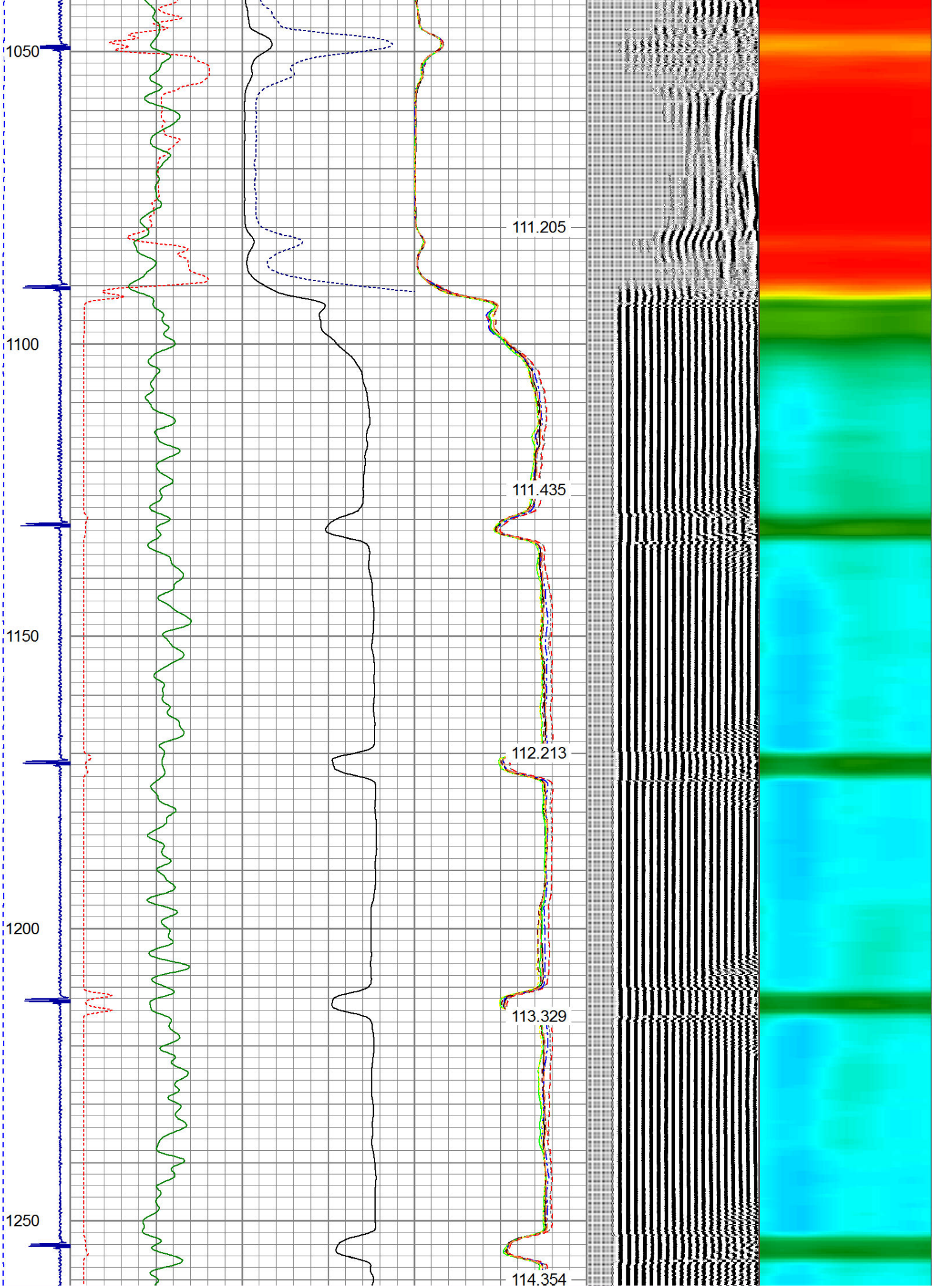














1300

1350

1400

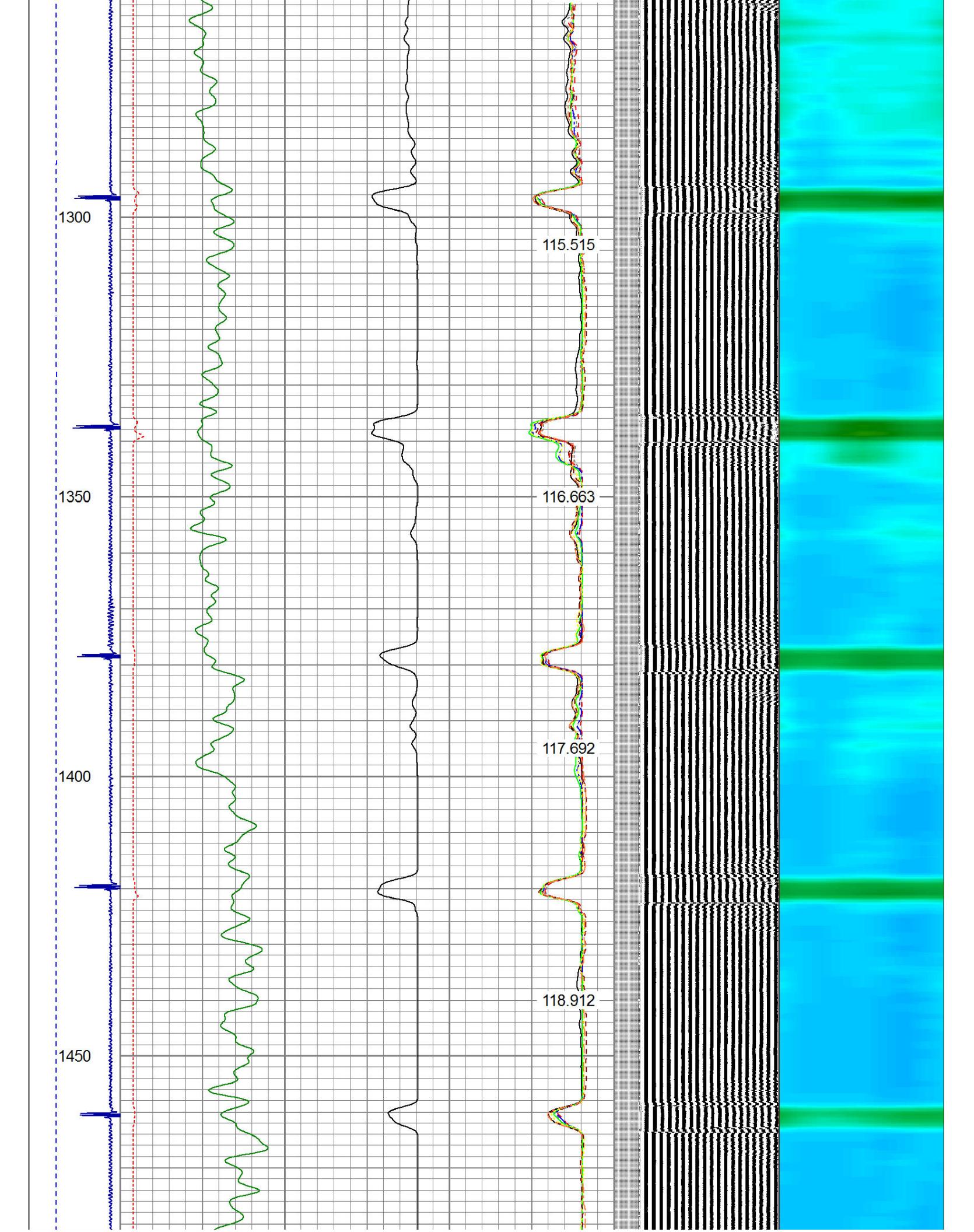
1450

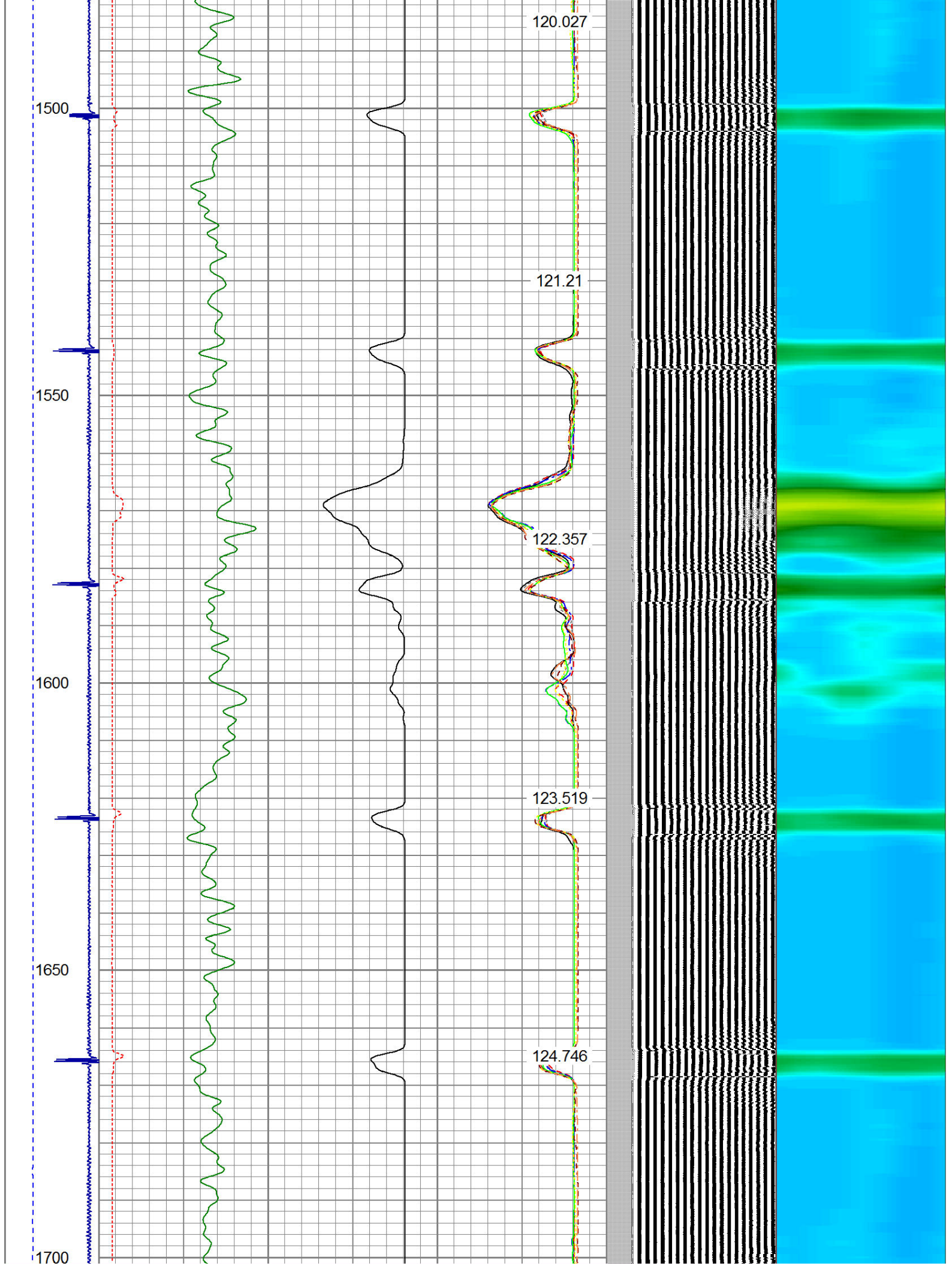
115.515

116.663

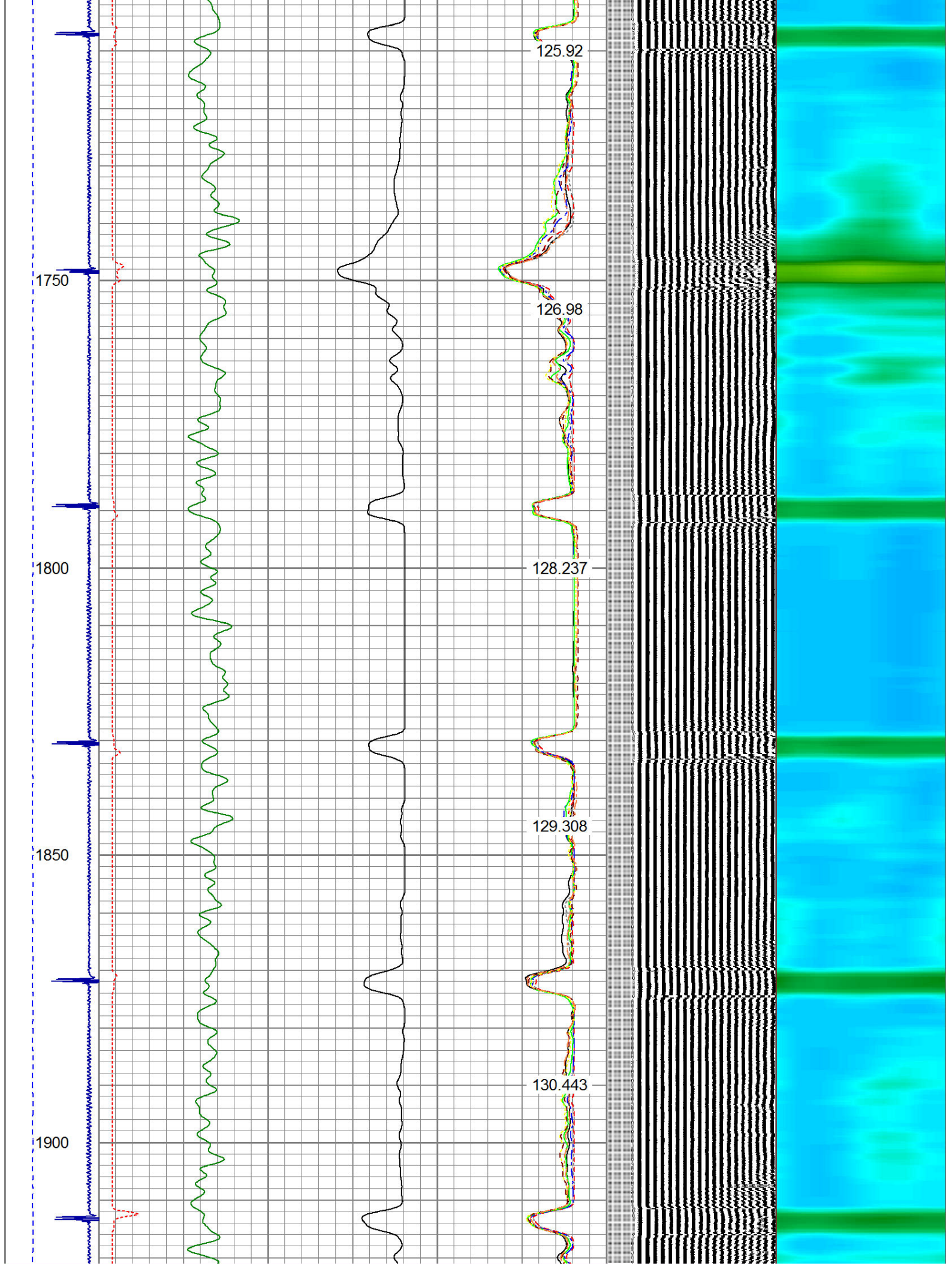
117.692

118.912









1950

2000

2050

2100

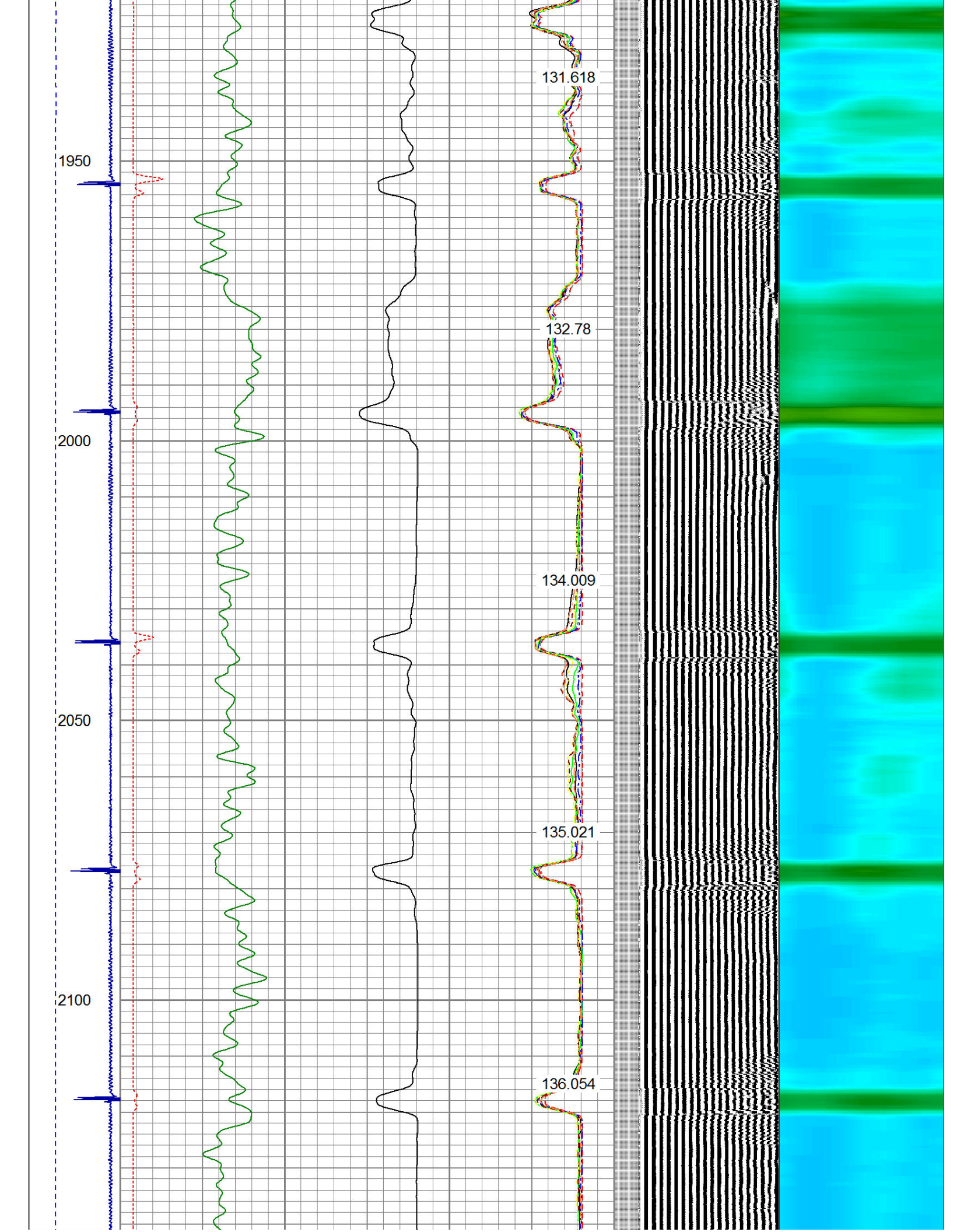
131.618

132.78

134.009

135.021

136.054





2150

2200

2250

2300

2350

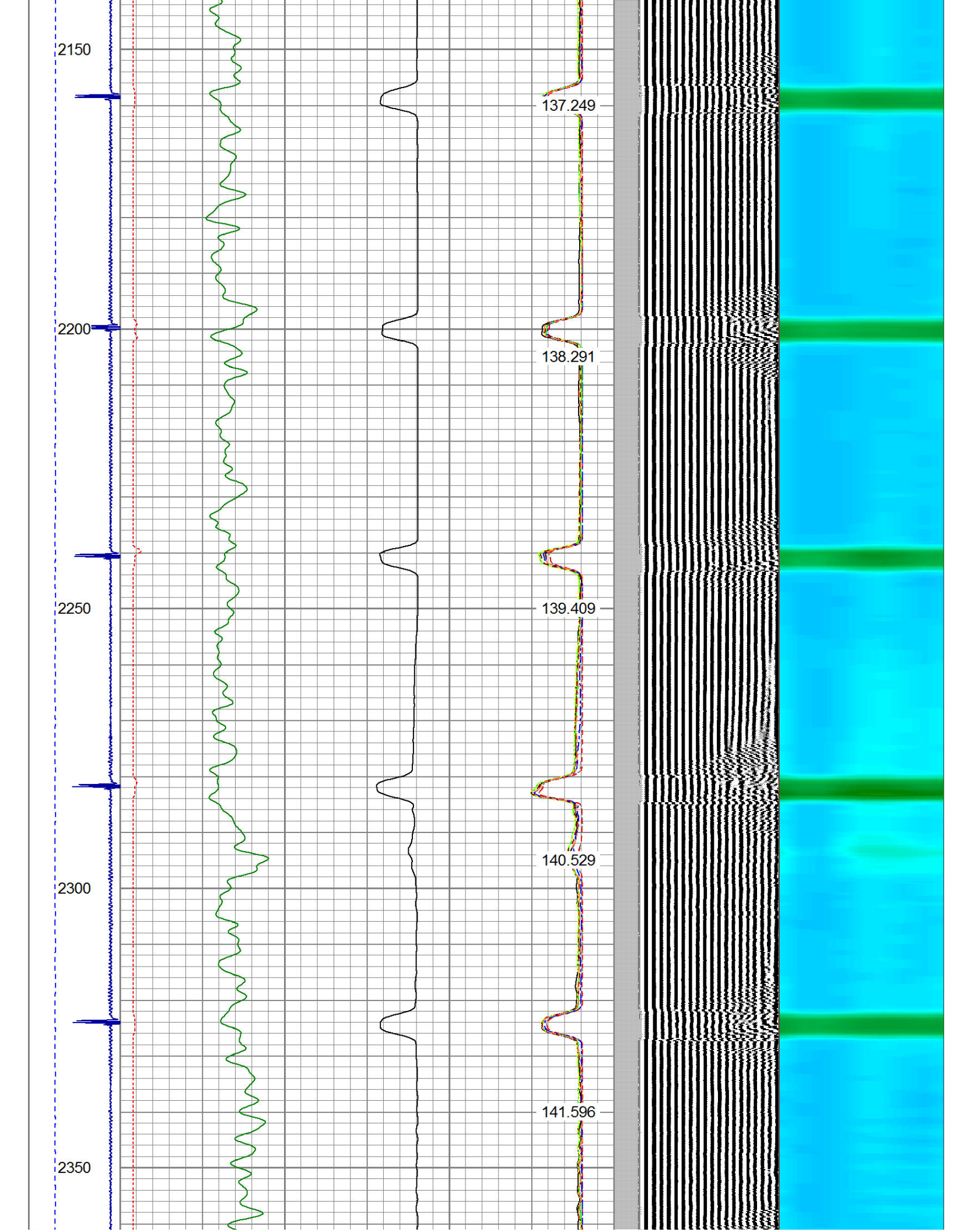
137.249

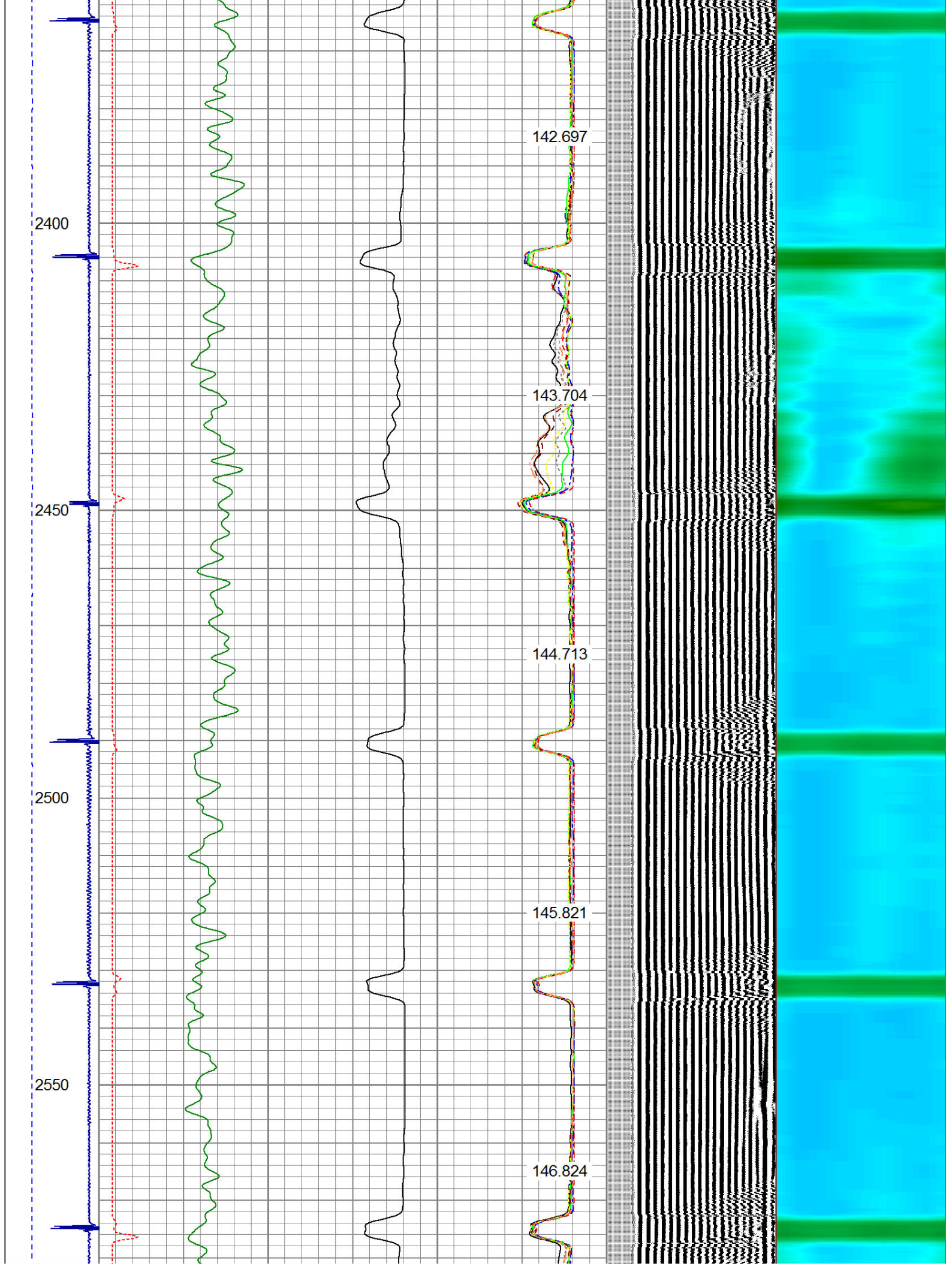
138.291

139.409

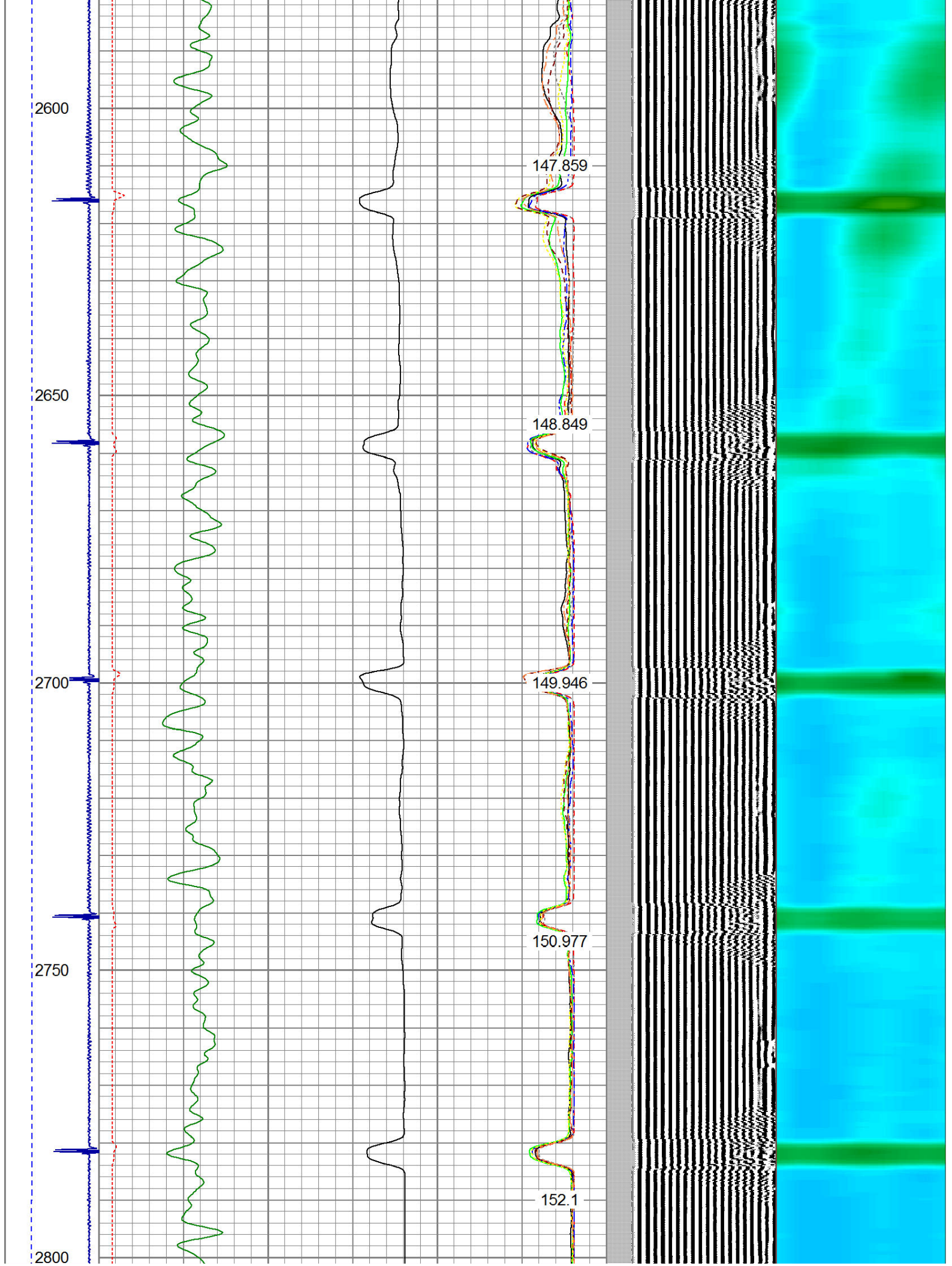
140.529

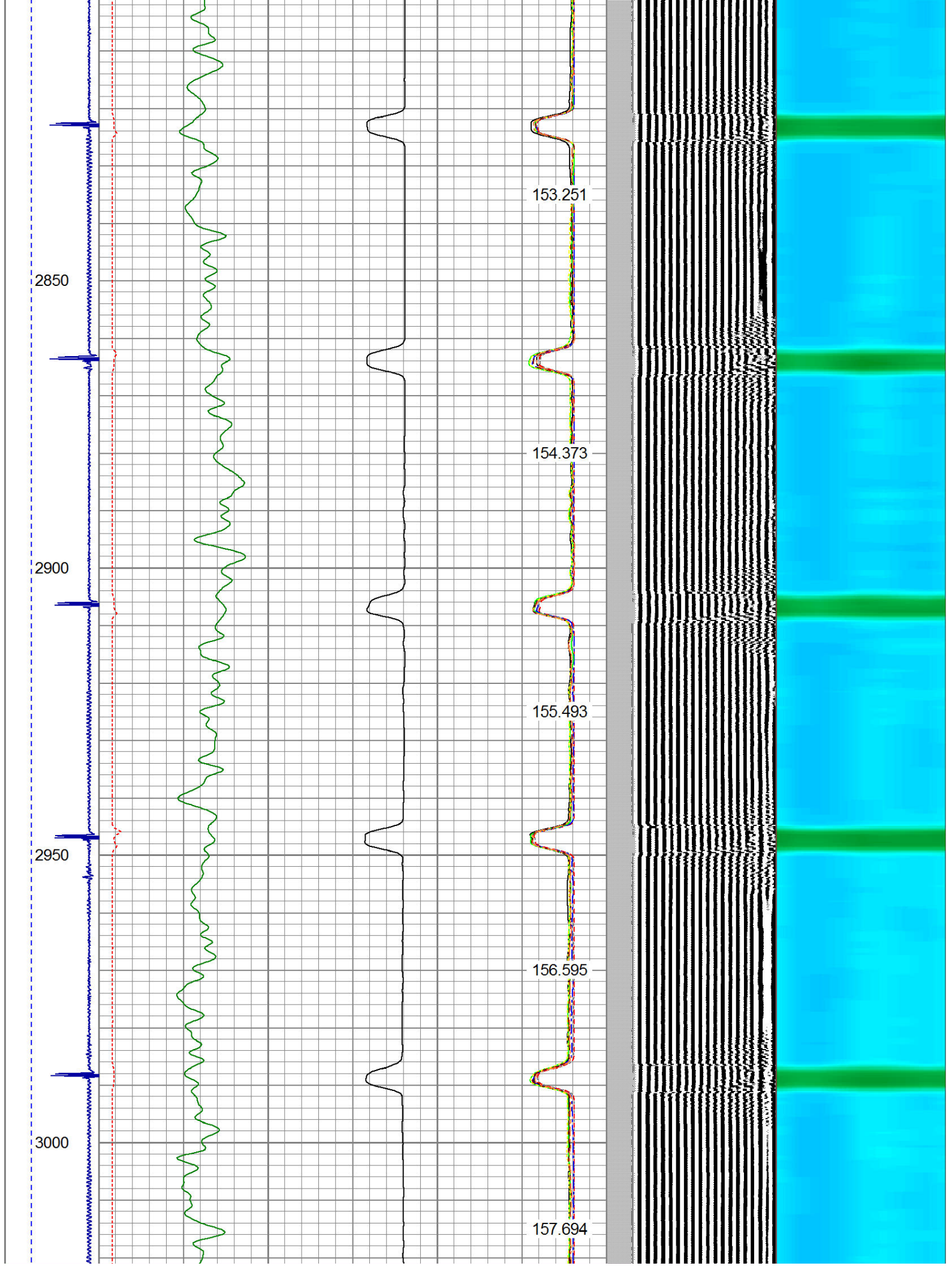
141.596













3050

3100

3150

3200

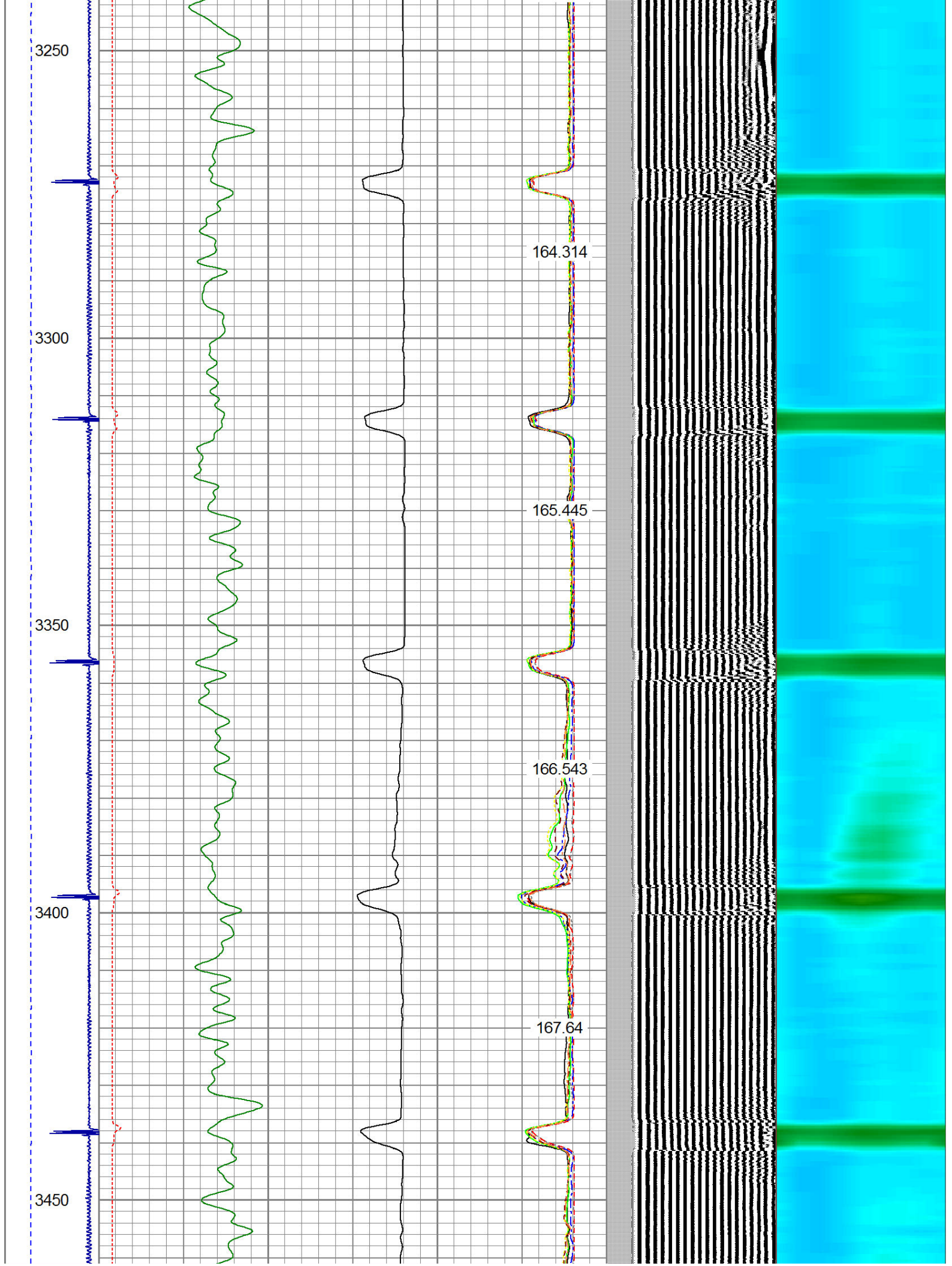
158.833

159.869

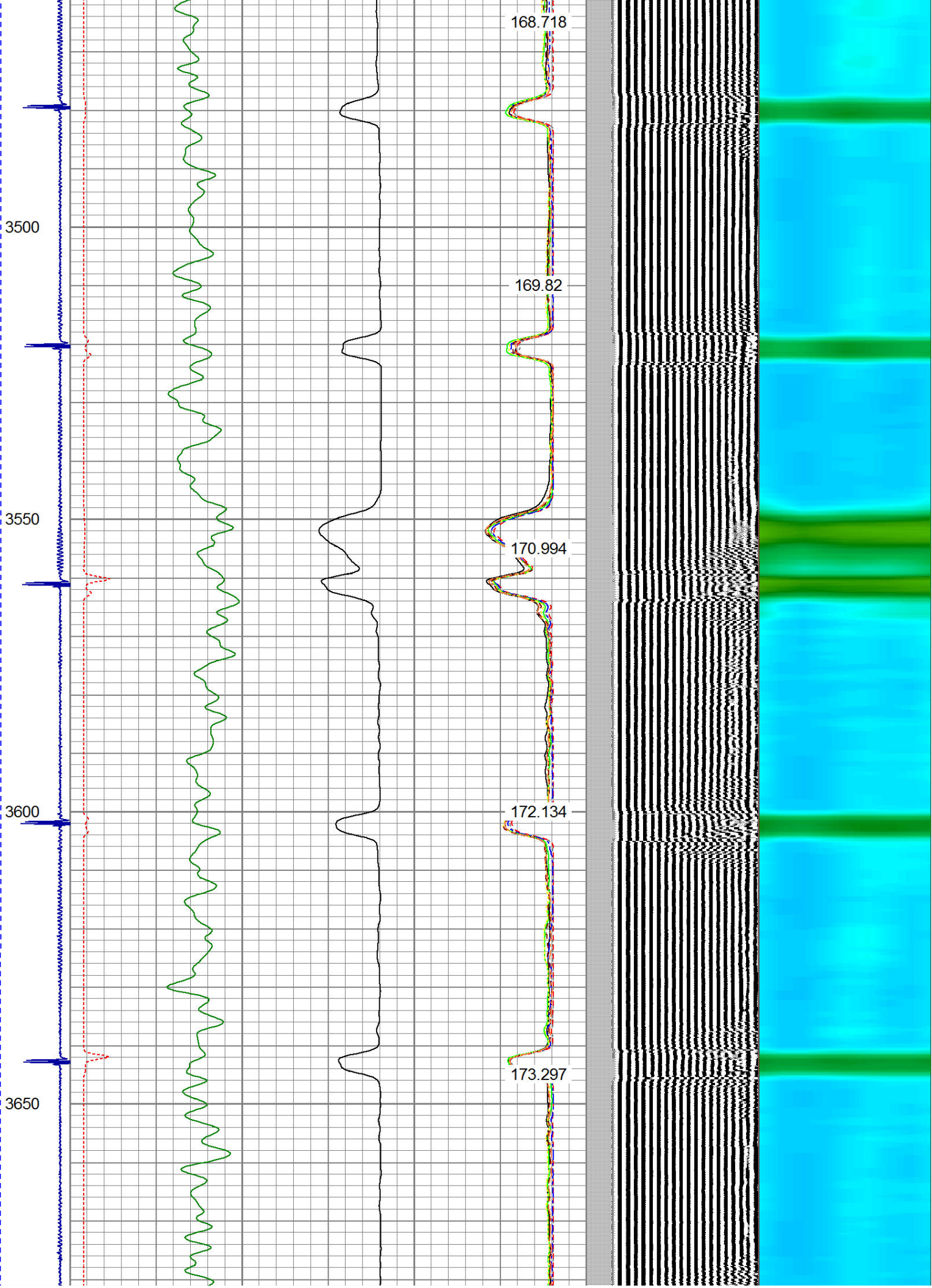
161.024

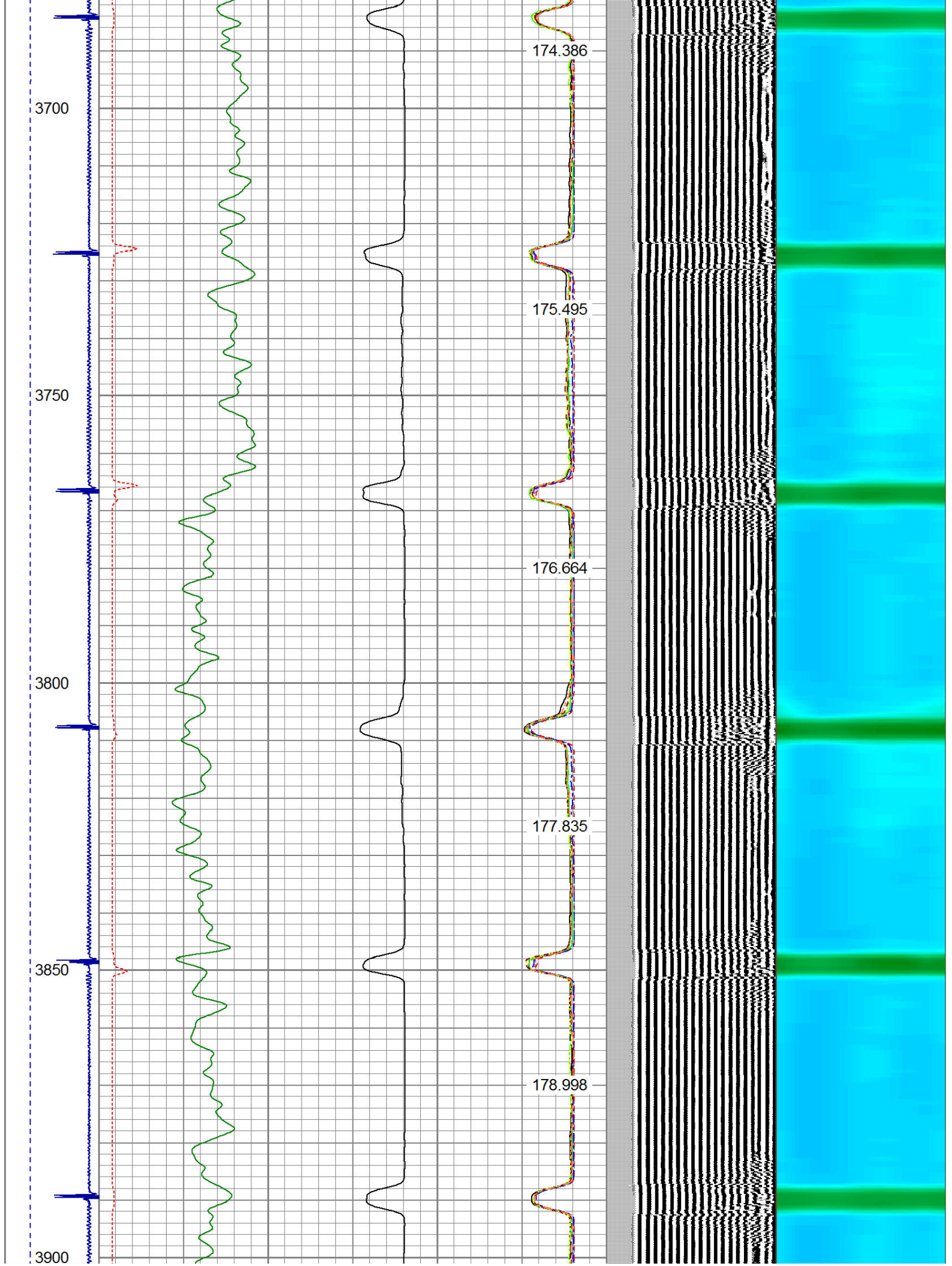
162.123

163.271

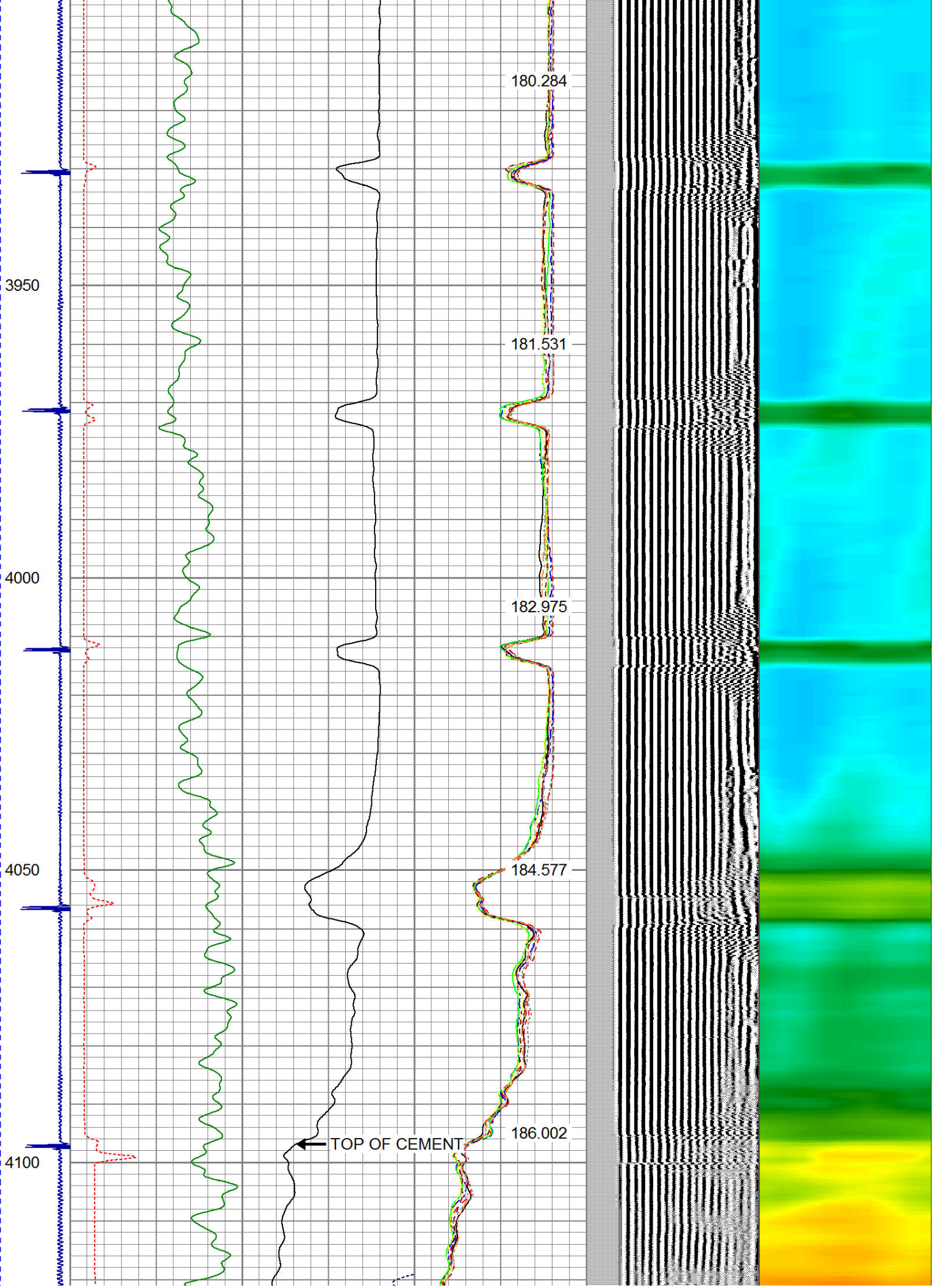




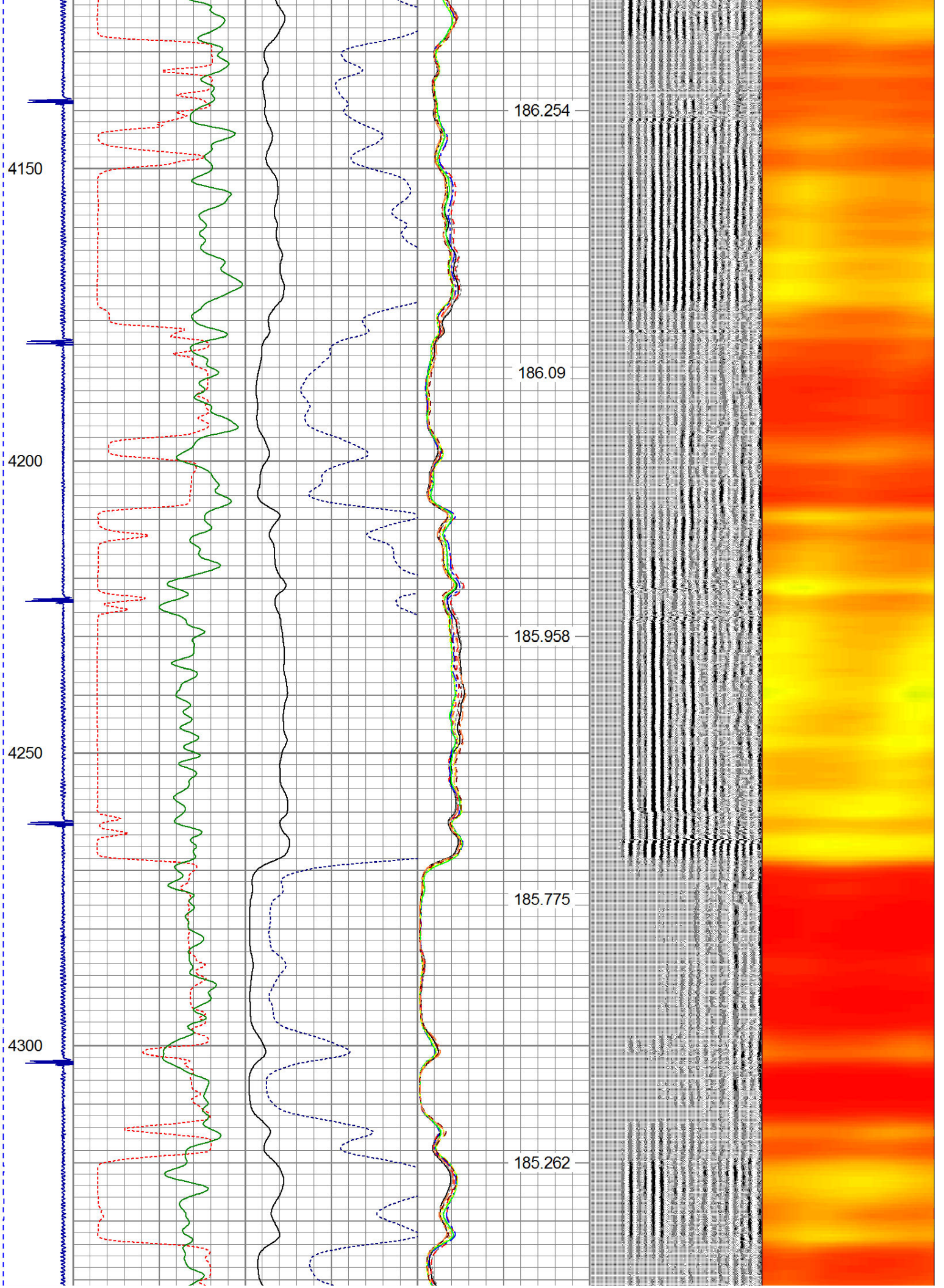




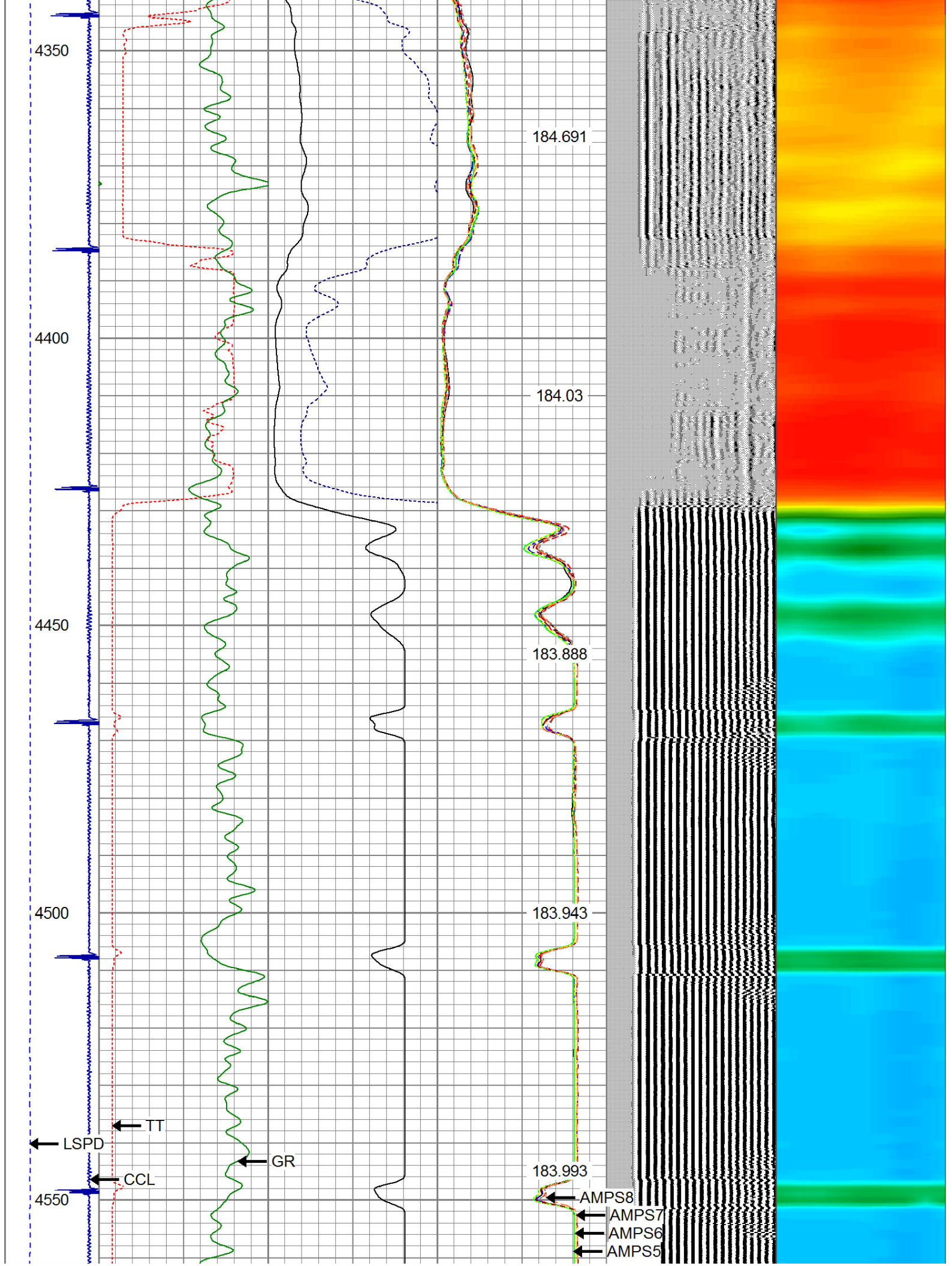


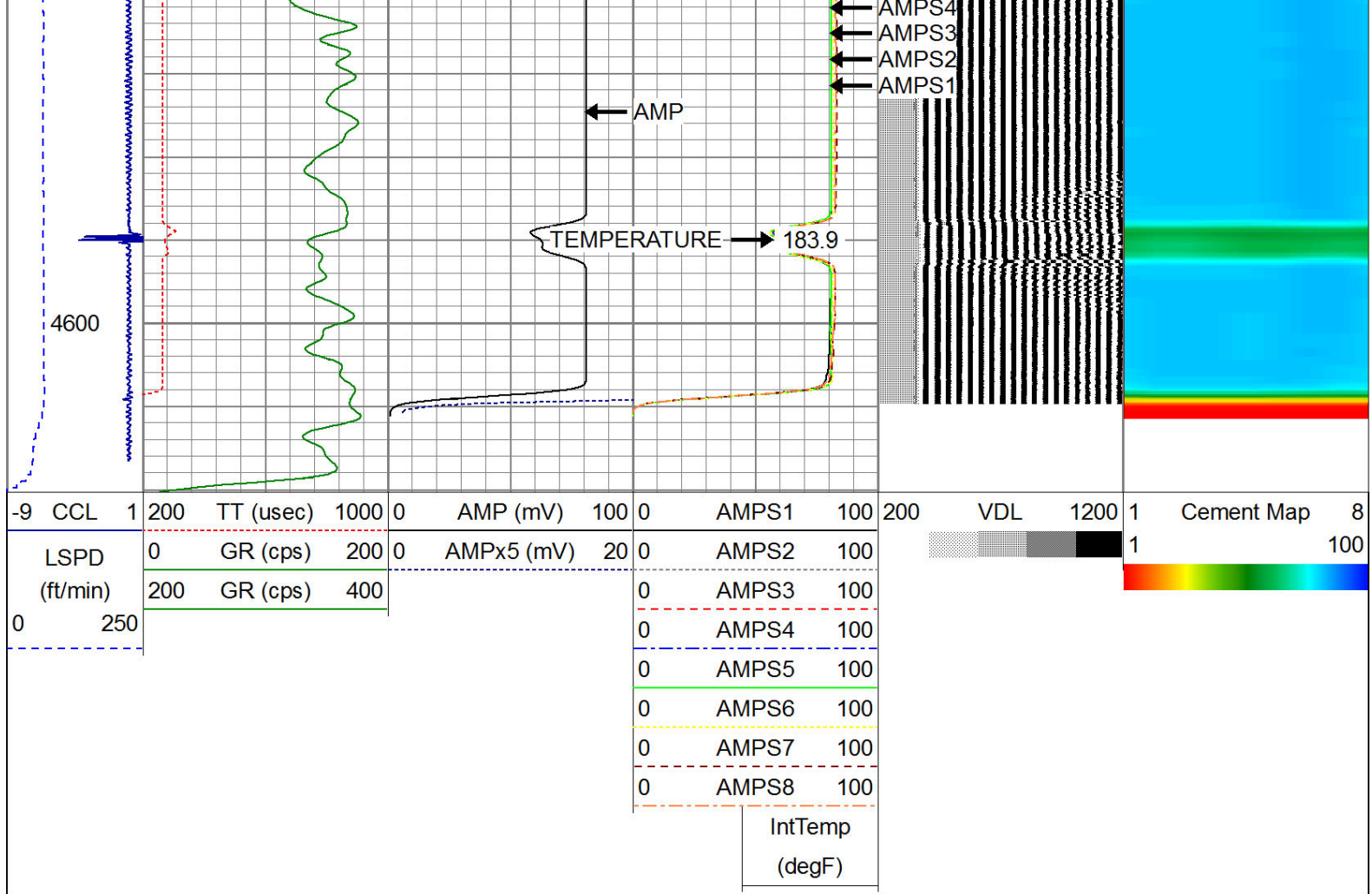












Calibration Report					
Database File:	webber 11-4.db				
Dataset Pathname:	pass11				
Dataset Creation:	Wed Jan 13 09:38:22 2016 by Log 7.0 B1				
Gamma Ray Calibration Report					
Serial Number:	275				
Tool Model:	Probe				
Performed:	Wed Jul 16 08:14:01 2014				
Calibrator Value:	120.0		cps		
Background Reading:	30.0		cps		
Calibrator Reading:	210.0		cps		
Sensitivity:	1.2000		cps/cps		
Compensated Neutron Calibration Report					
Serial Number:	275				
Tool Model:	Probe_B				
CALIBRATION	Wed Jul 30 08:47:19 2008				
Detector	Readings		Target		Normalization
Short Space	5001.20	cps	0.00	cps	1.0000
Long Space	1029.31	cps	0.00	cps	1.0000
PRE-SURVEY VERIFICATION					
Detector	Readings		Measured		Target



1)	Short Space	cps		
	Long Space	cps	pu	pu
2)	Short Space	cps		
	Long Space	cps	pu	
3)	Short Space	cps		
	Long Space	cps	pu	

POST-SURVEY VERIFICATION

	Detector	Readings	Measured	Target
1)	Short Space	cps		
	Long Space	cps	pu	pu
2)	Short Space	cps		
	Long Space	cps	pu	pu
3)	Short Space	cps		
	Long Space	cps	pu	pu

Segmented Cement Bond Log Calibration Report

Serial Number:	Base	
Tool Model:	Probe	
Calibration Casing Diameter:	4.500	in
Calibration Depth:	1651.884	ft

Master Calibration, performed Wed Jan 13 08:36:01 2016:

	Raw (v)		Calibrated (mv)		Results	
	Zero	Cal	Zero	Cal	Gain	Offset
3'	0.012	2.500	1.500	81.196	32.033	1.114
CAL	1.553	2.500				
5'	0.011	2.355	1.500	81.196	33.996	1.118
SUM						
S1	0.011	2.498	0.500	81.000	32.367	0.141
S2	0.012	2.500	0.500	81.000	32.350	0.124
S3	0.010	2.500	0.500	81.000	32.333	0.167
S4	0.010	2.500	0.500	81.000	32.335	0.162
S5	0.011	2.500	0.500	81.000	32.348	0.129
S6	0.010	2.468	0.500	81.000	32.751	0.159
S7	0.015	2.423	0.500	81.000	33.438	-0.008
S8	0.012	2.439	0.500	81.000	33.158	0.118


Internal Reference Calibration, performed Tue Jun 05 07:53:42 2012:

	Raw (v)		Calibrated (v)		Results	
	Zero	Cal	Zero	Cal	Gain	Offset
CAL	0.000	0.000	1.553	2.500	1.000	0.000

Air Zero Calibration, performed Wed Jan 13 08:10:22 2016:

	Raw (v)		Calibrated (v)		Results	
	Zero		Zero		Offset	
3'	0.000		0.000		0.000	
5'	0.000		0.000		0.000	
SUM						

S1	0.000	0.000	0.000
S2	0.000	0.000	0.000
S3	0.000	0.000	0.000
S4	0.000	0.000	0.000
S5	0.000	0.000	0.000
S6	0.000	0.000	0.000
S7	0.000	0.000	0.000
S8	0.000	0.000	0.000



CompanyANADARKO PETROLEUM CORP.

WellWEBBER 11-4

FieldWATTENBERG

CountyWELD

StateCOLORADO