

RADIAL CEMENT BOND LOG GAMMA RAY CCL

Company		ANADARKO PETROLEUM CORP.	
Well		ANDERSON MEL GU 1	
Field		WATTENBERG	
County		WELD	
State		COLORADO	
Location:		API # : 05-123-08422	
LAT: 40.09030 LONG: -104.78734		Other Services	
SW/SW			
SEC 33 TWP 2N RGE 66W			
Permanent Datum		GL	Elevation
Log Measured From		KB 10'	4976'
Drilling Measured From		KB	Elevation
			KB. 4986'
			D.F. 4985'
			G.L. 4976'
Date	11-23-2015		
Run Number	ONE		
Depth Driller	8110		
Depth Logger	4193'		
Bottom Logged Interval	4184'		
Top Log Interval	SURFACE		
Open Hole Size	7 7/8		
Type Fluid	WATER		
Density / Viscosity	1.0		
Max. Recorded Temp.	139 DEG F		
Estimated Cement Top	43'		
Time Well Ready	N/A		
Time Logger on Bottom	N/A		
Equipment Number	3812		
Location	GREENEY		
Recorded By	N.POLLOCK		
Witnessed By	NATE W.		
Borehole Record		Tubing Record	
Run Number	Bit	From	To
		Size	Weight
		From	To
Casing Record	Size	Wgt/Ft	Top
Surface String	8.875	24#	SURFACE
Prot. String			Bottom
Production String	4.5	11.6#	200
Liner			SURFACE
			T.D.

<<< Fold Here >>>

All interpretations are opinions based on inferences from electrical or other measurements and we cannot and do not guarantee the accuracy or correctness of any interpretation, and we shall not, except in the case of gross or willful negligence on our part, be liable or responsible for any loss, costs, damages, or expenses incurred or sustained by anyone resulting from any interpretation made by any of our officers, agents or employees. These interpretations are also subject to our general terms and conditions set out in our current Price Schedule.

Comments

RAN CBL TO VERIFY CEMENT TOP

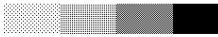

RIG TRIPPED IN 4 STANDS AND ROLLED THE HOLE

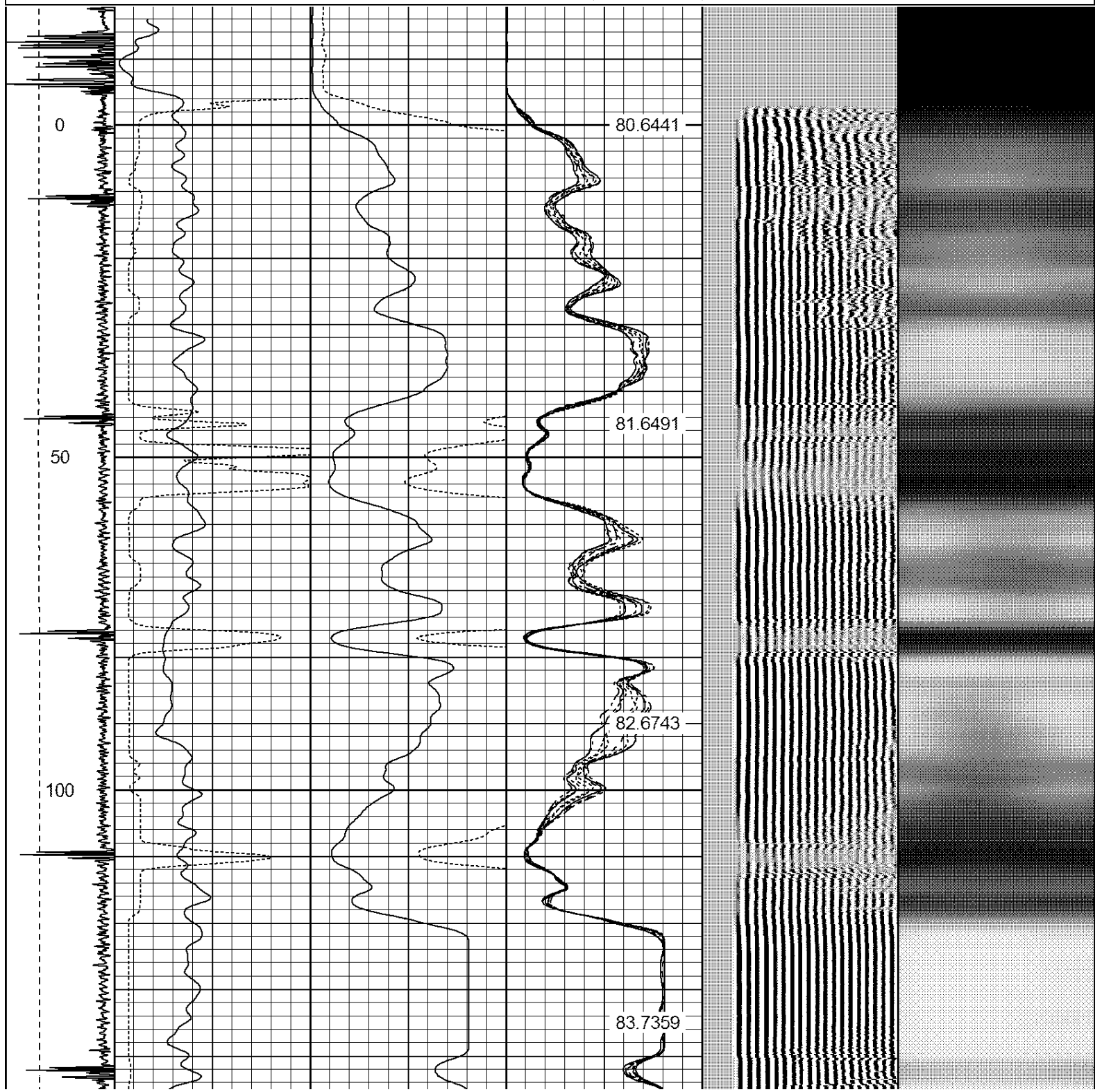
CORRELATED 13' OUT OF HOLE TO IPS LOG RAN 8-6-2008

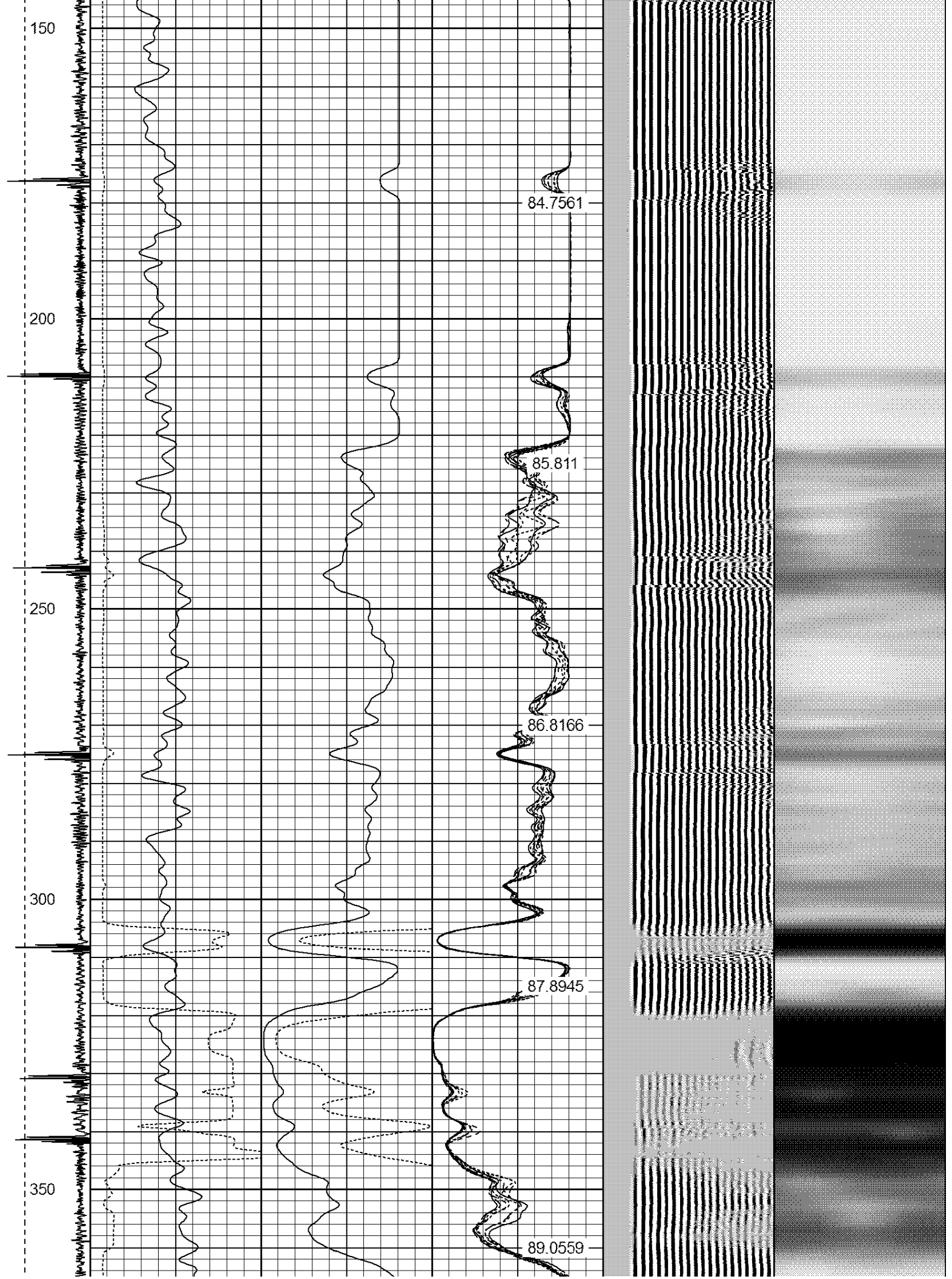
THANK YOU FOR USING IPS!!

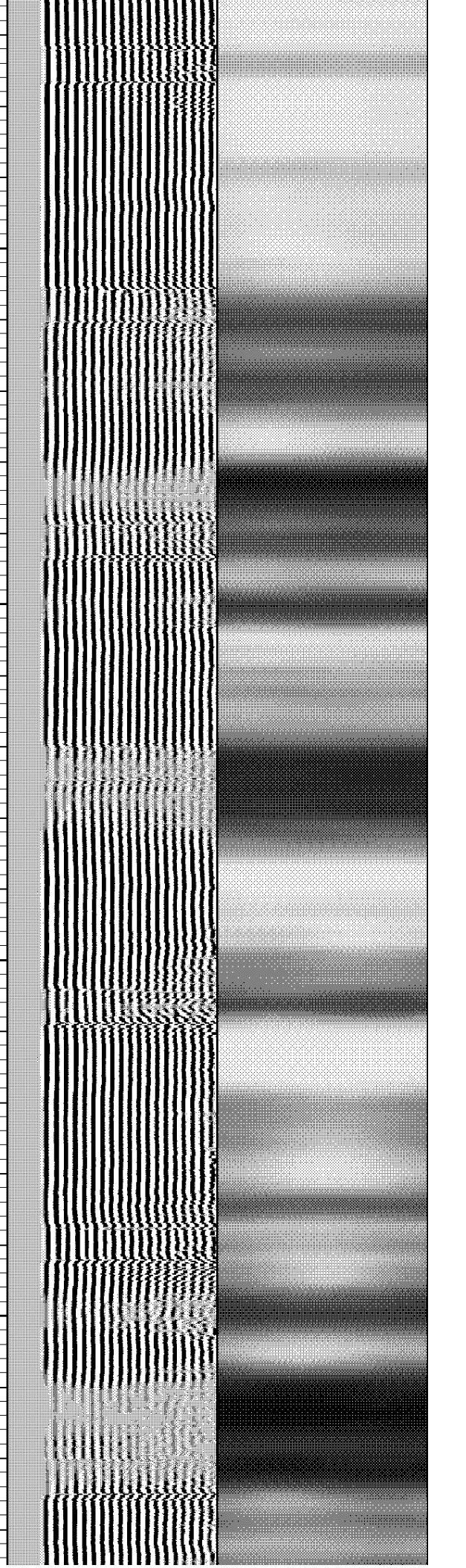
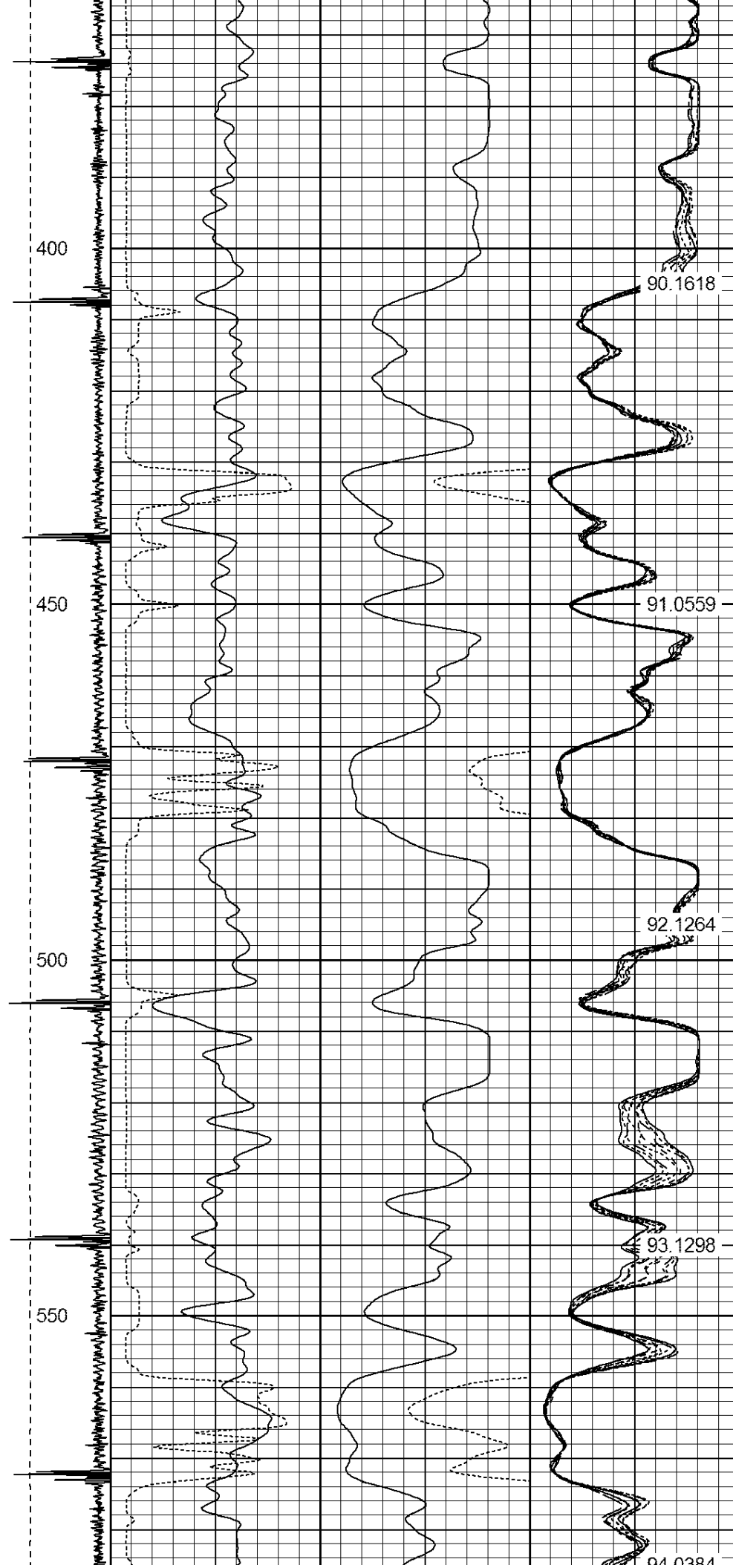
Sensor	Offset (ft)	Schematic	Description	Len (ft)	OD (in)	Wt (lb)
CENT	19.08					

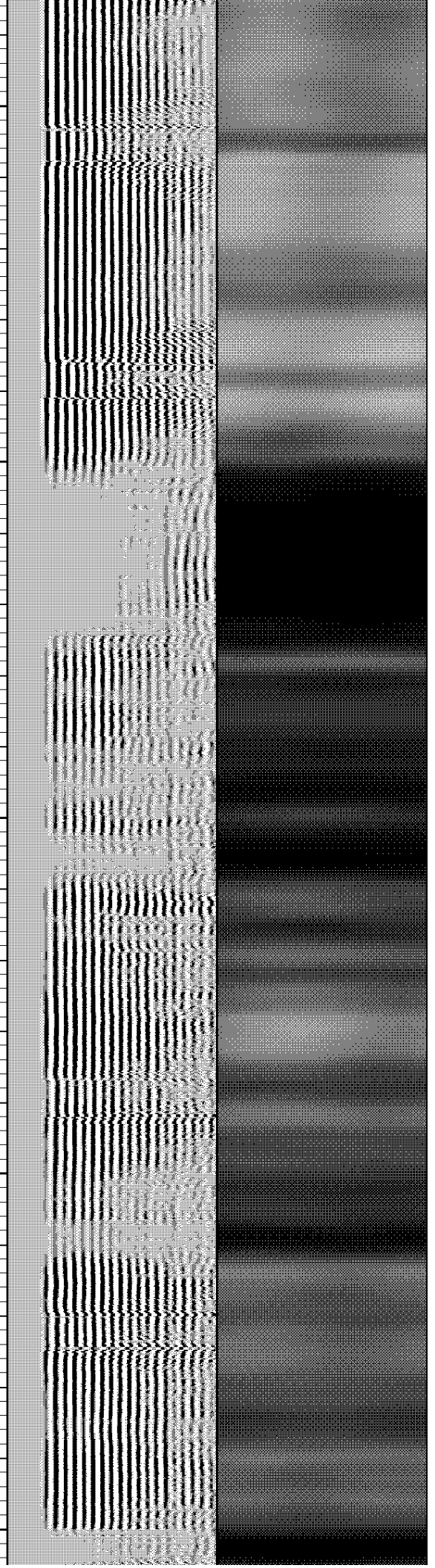
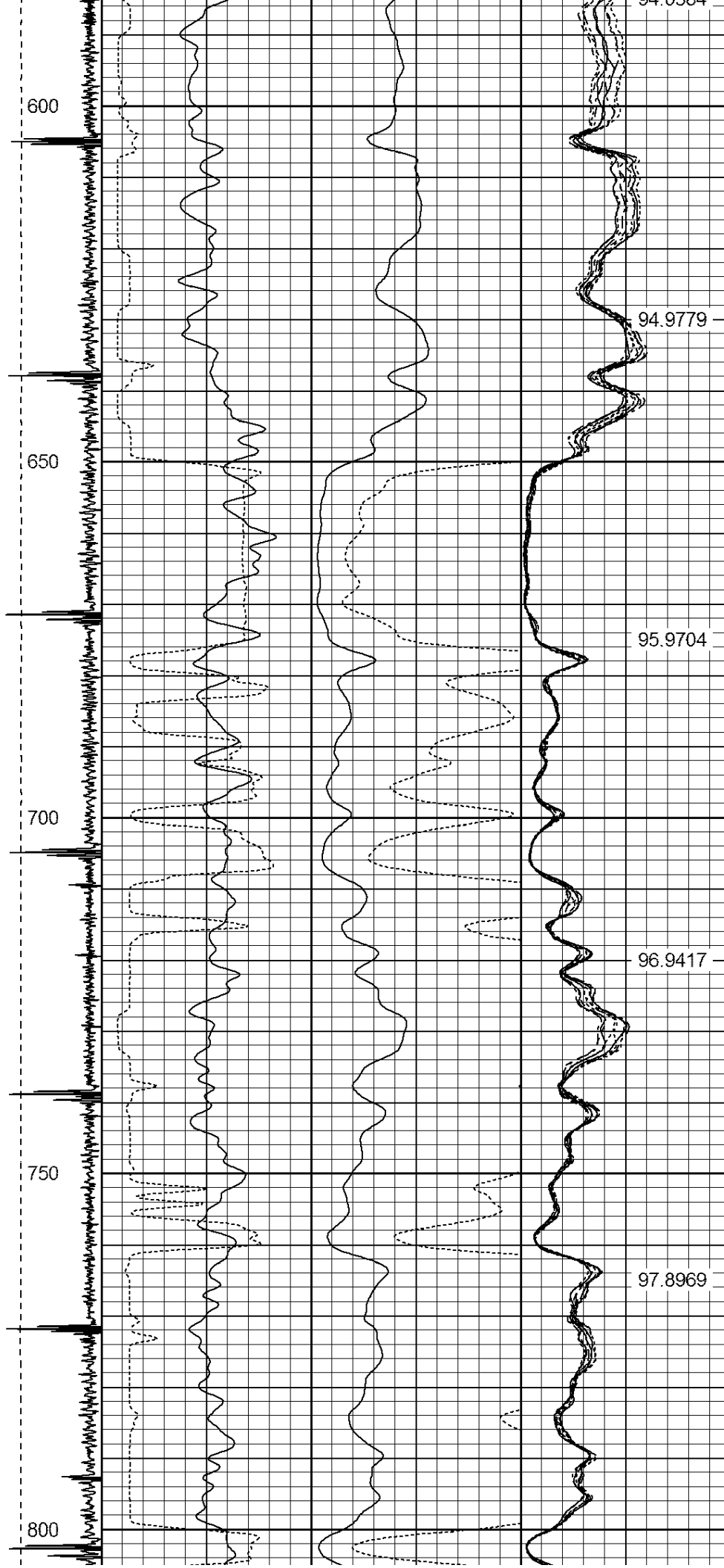
			PTS275	2.83	2.75	
HEADVOLT	16.25					
RBT	16.25					
IntTemp	14.83					
WVF3FT	11.58		RBT-Probe (Base)	8.92	2.75	90.00
WVFCAL	11.58		Probe Radii Bond Tool with Digital Telemetry			
WVFS1	11.58					
WVFS2	11.58					
WVFS3	11.58					
WVFS4	11.58					
WVFS5	11.58					
WVFS6	11.58					
WVFS7	11.58					
WVFS8	11.58					
WVF5FT	10.58					
CNLSC	6.00		CNT-Probe_B (275)	3.00	2.75	40.00
CNSSC	5.17		6 bow centralizer			
GR	4.33					
CCL	3.64					
			GR-Probe (275)	4.33	2.75	30.00
			Probe 2.75"			
GR	0.90					
Dataset: anderson mel gu 1.db: field/well/run1/pass8 Total Length: 19.08 ft Total Weight: 160.00 lb O.D. 2.75 in						

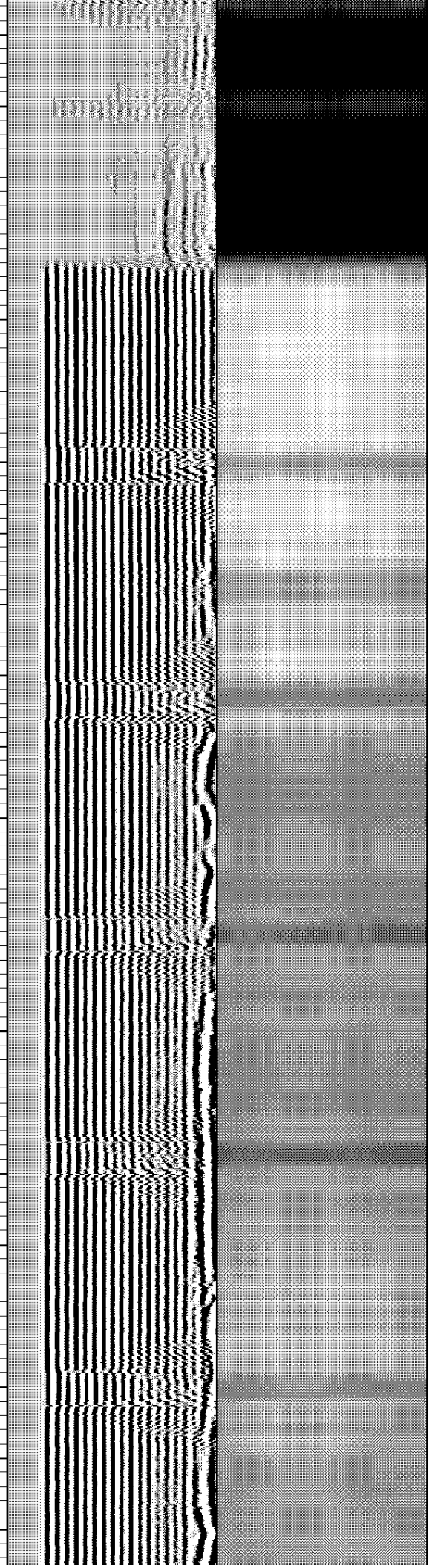
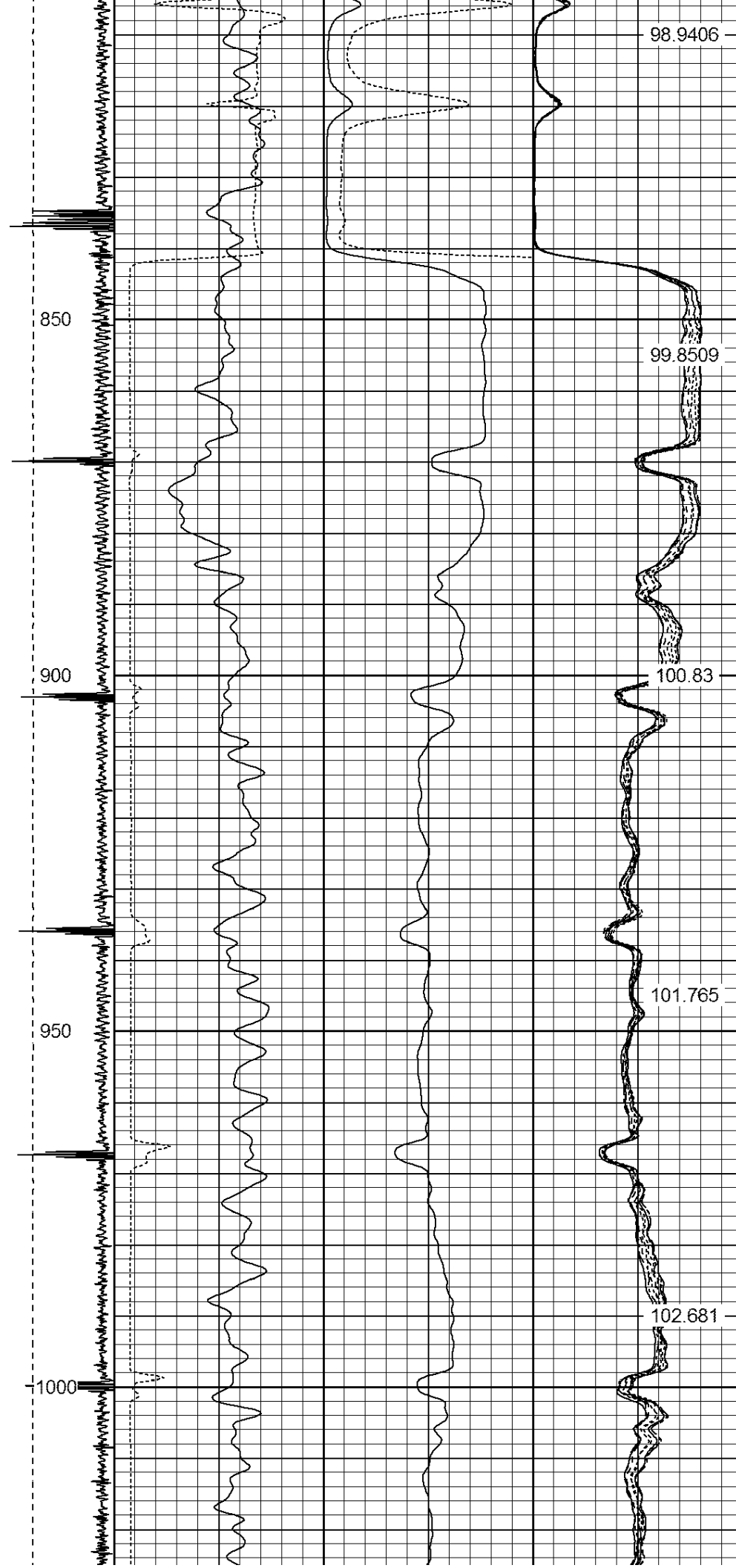
-9	CCL	1	200	TT (usec)	1000	0	AMP (mV)	100	0	AMPS1	100	200	VDL	1200	1	Cement Map	8													
LSPD (ft/min)	0		GR (cps)		200	0	AMPx5 (mV)	20	0	AMPS2	100			100			1													
	200		GR (cps)		400	0			AMPS3	100																				
	0					0			AMPS4	100																				
										0	AMPS5	100																		
										0	AMPS6	100																		
										0	AMPS7	100																		
										0	AMPS8	100																		
										IntTemp																				
										(degF)																				



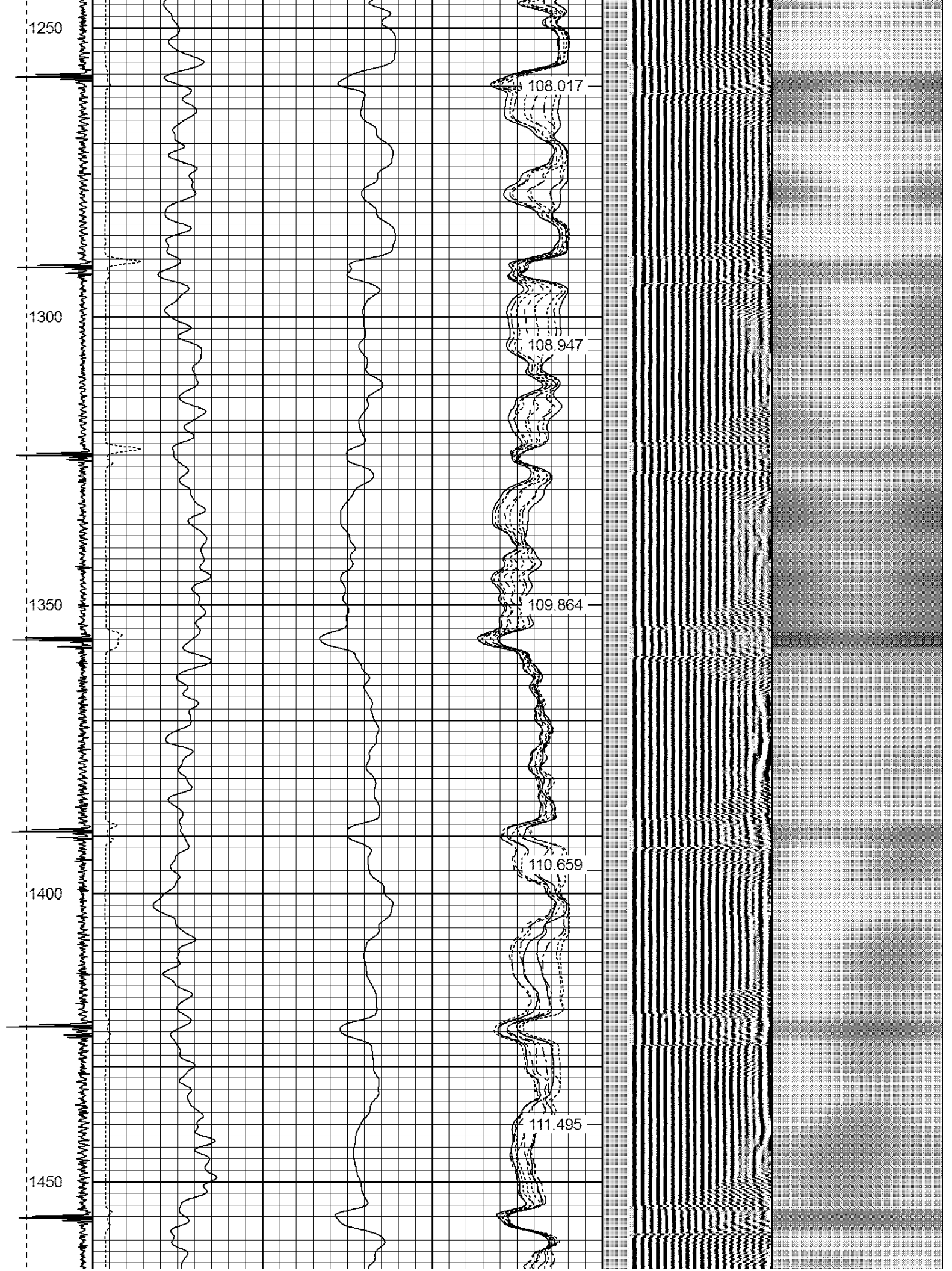


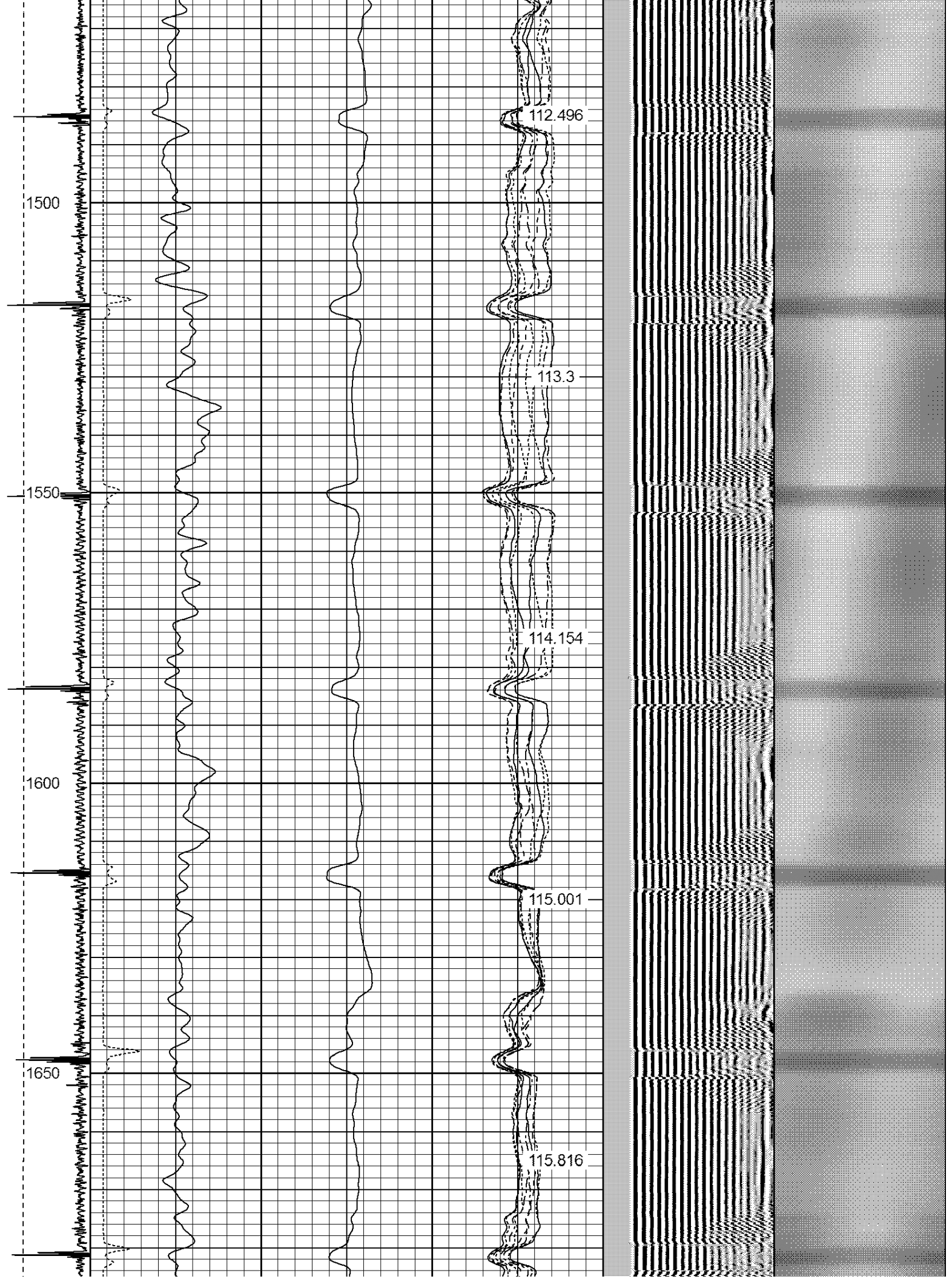


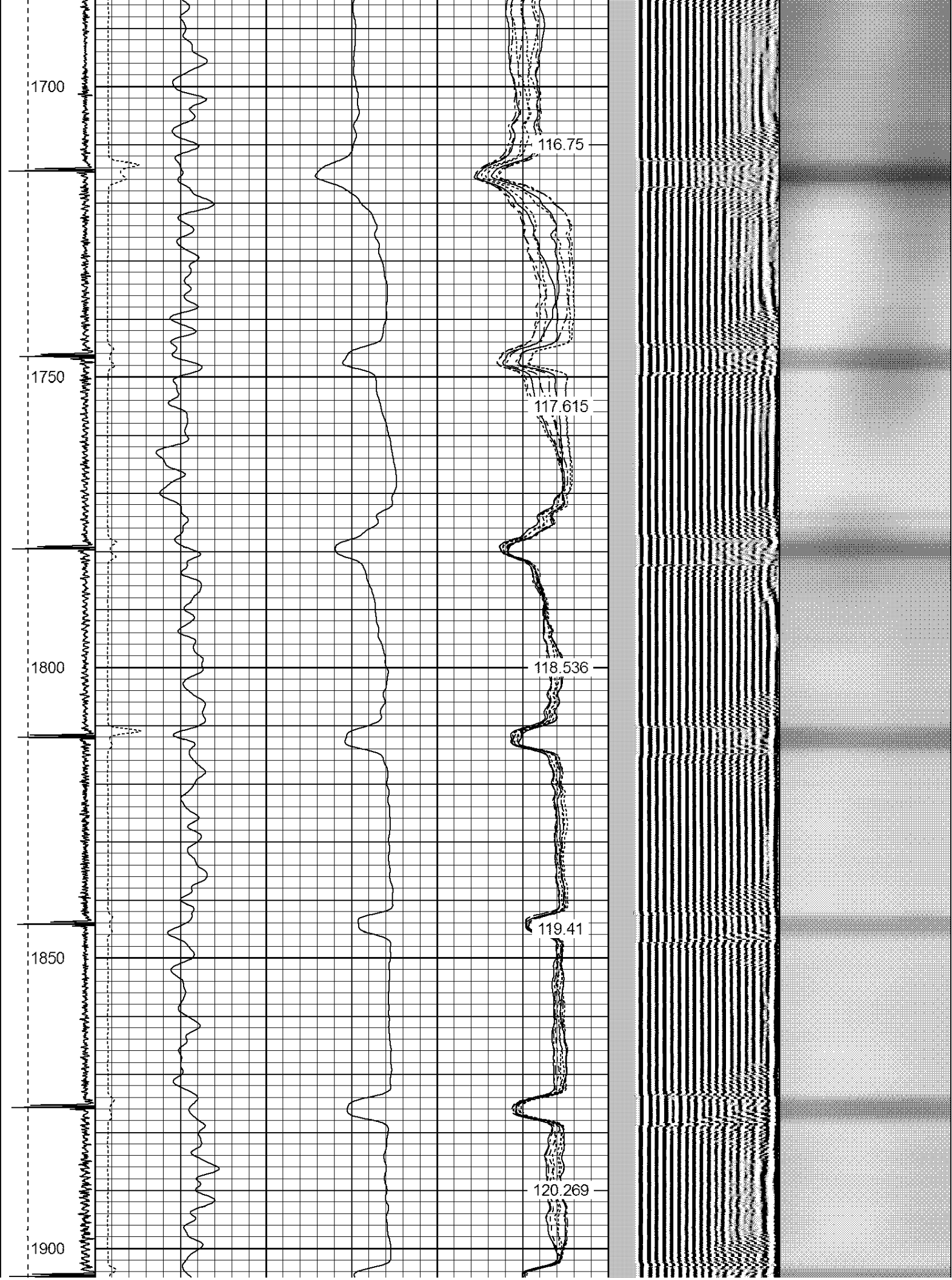




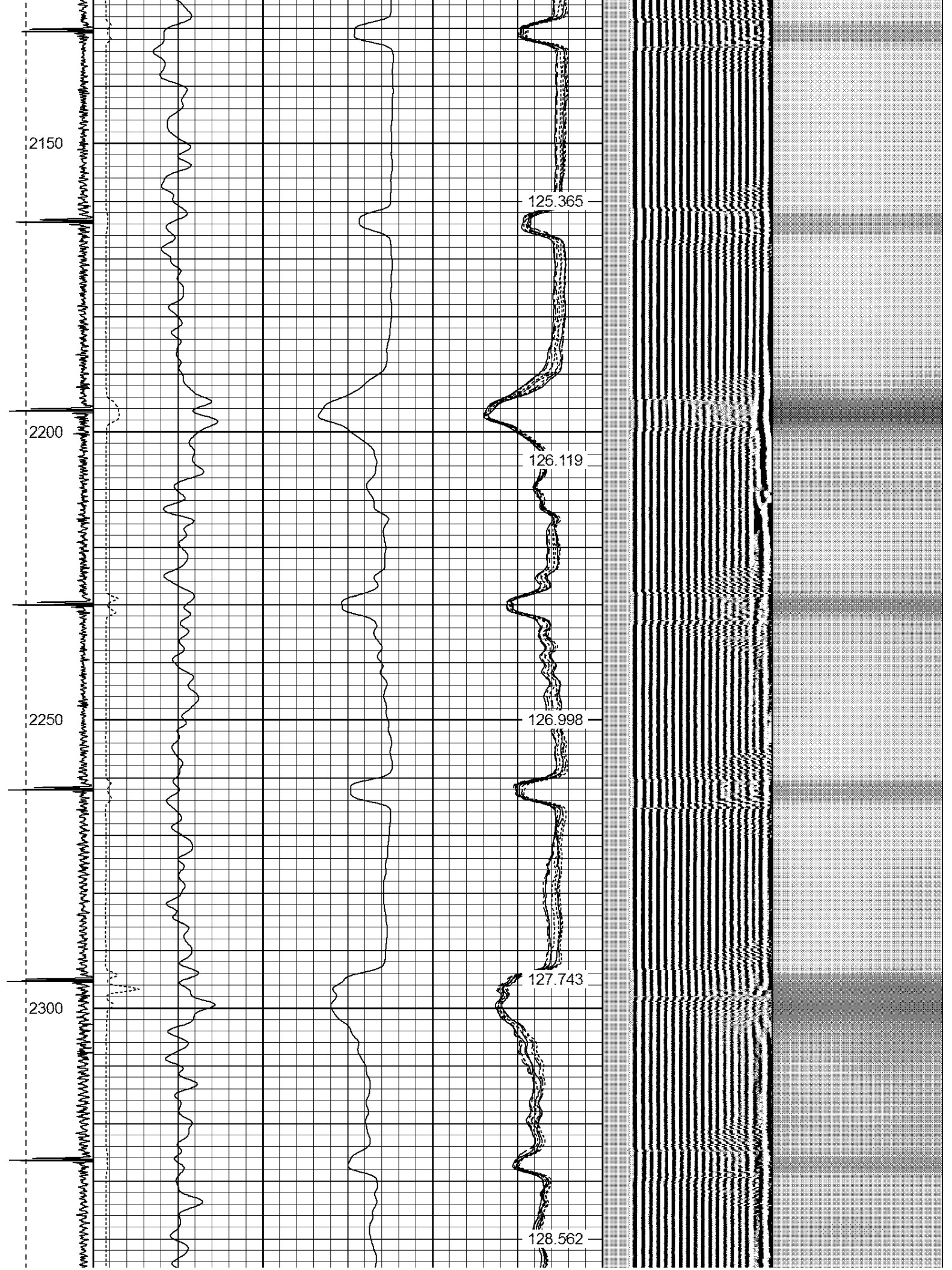


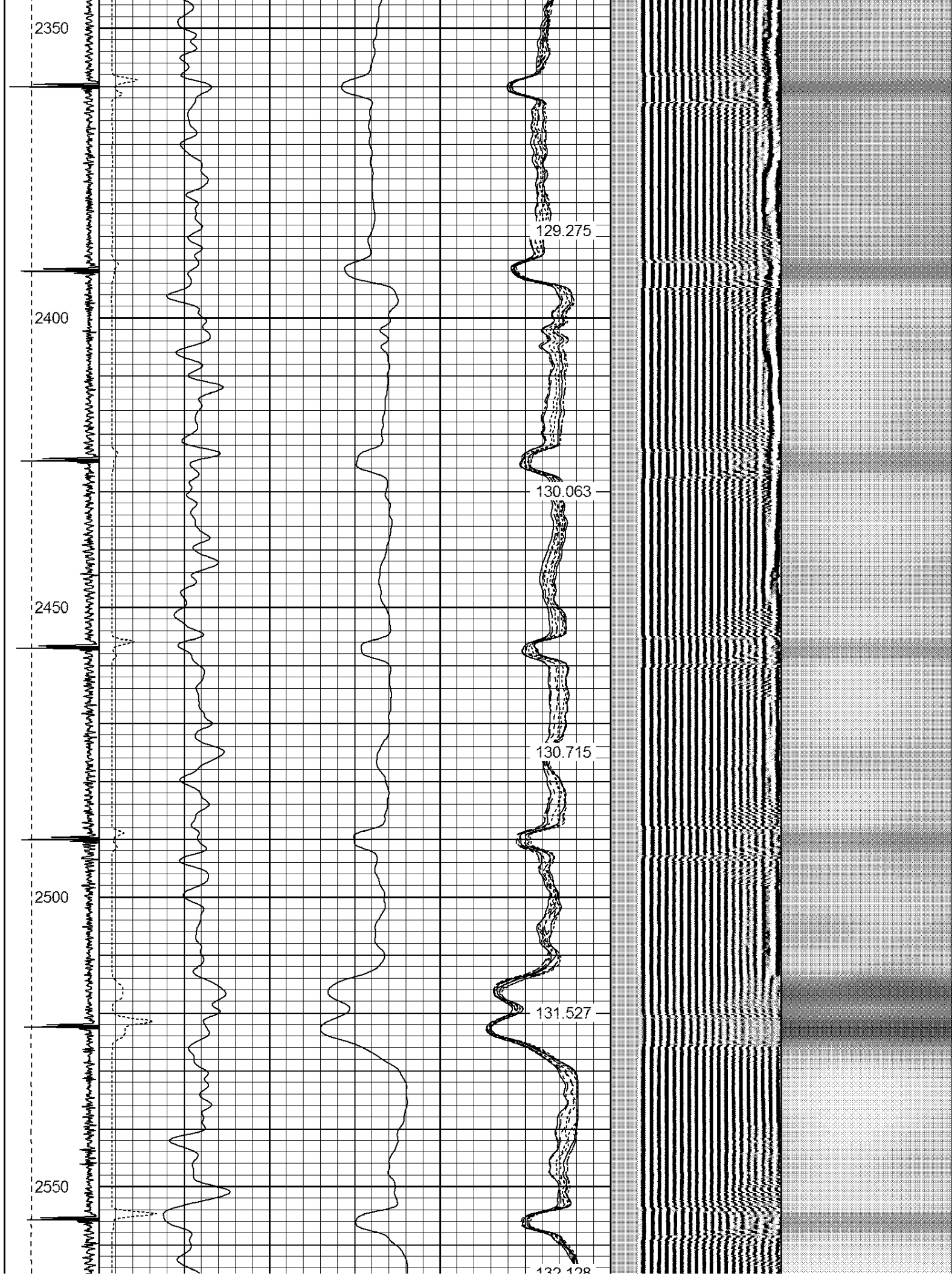


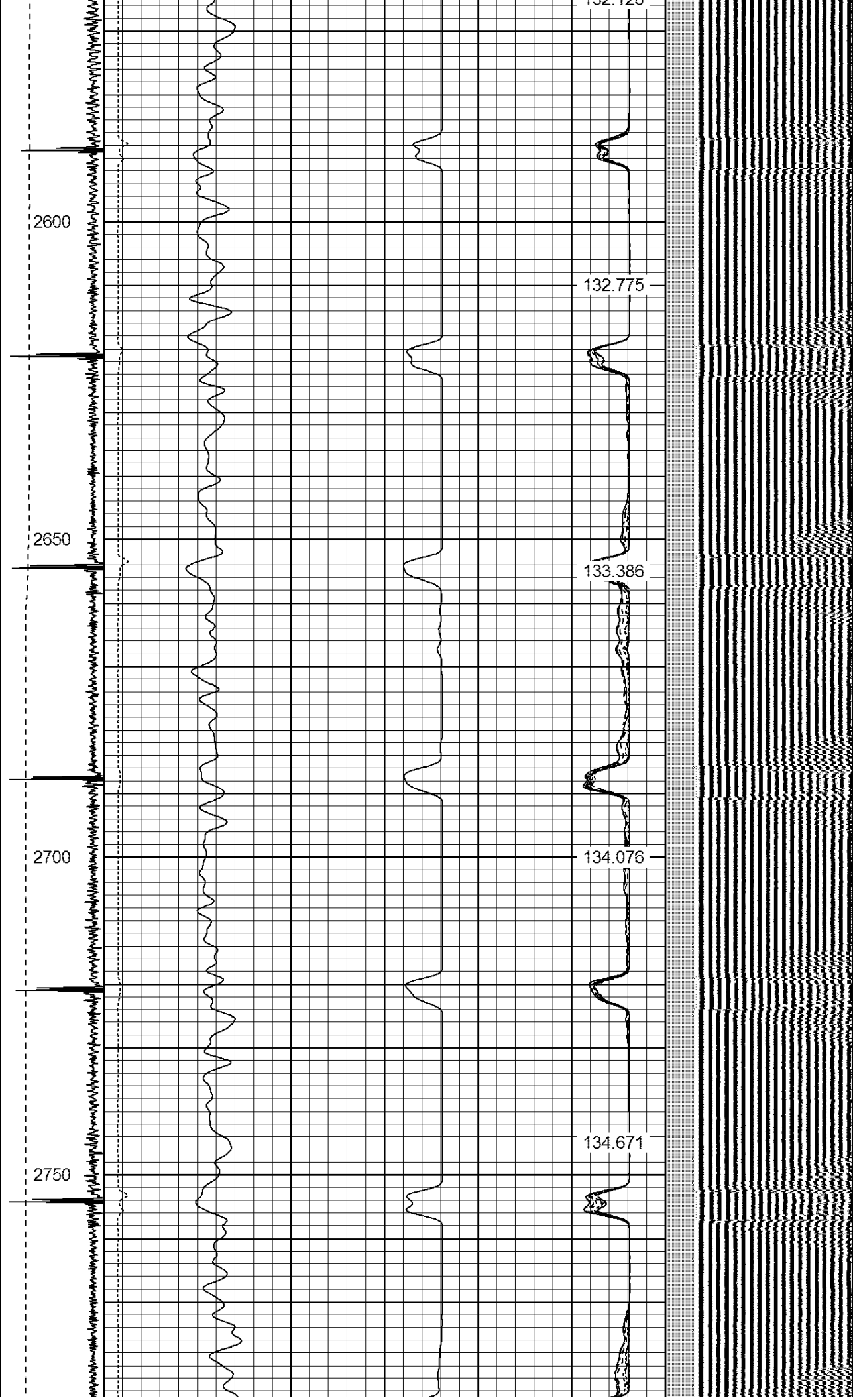


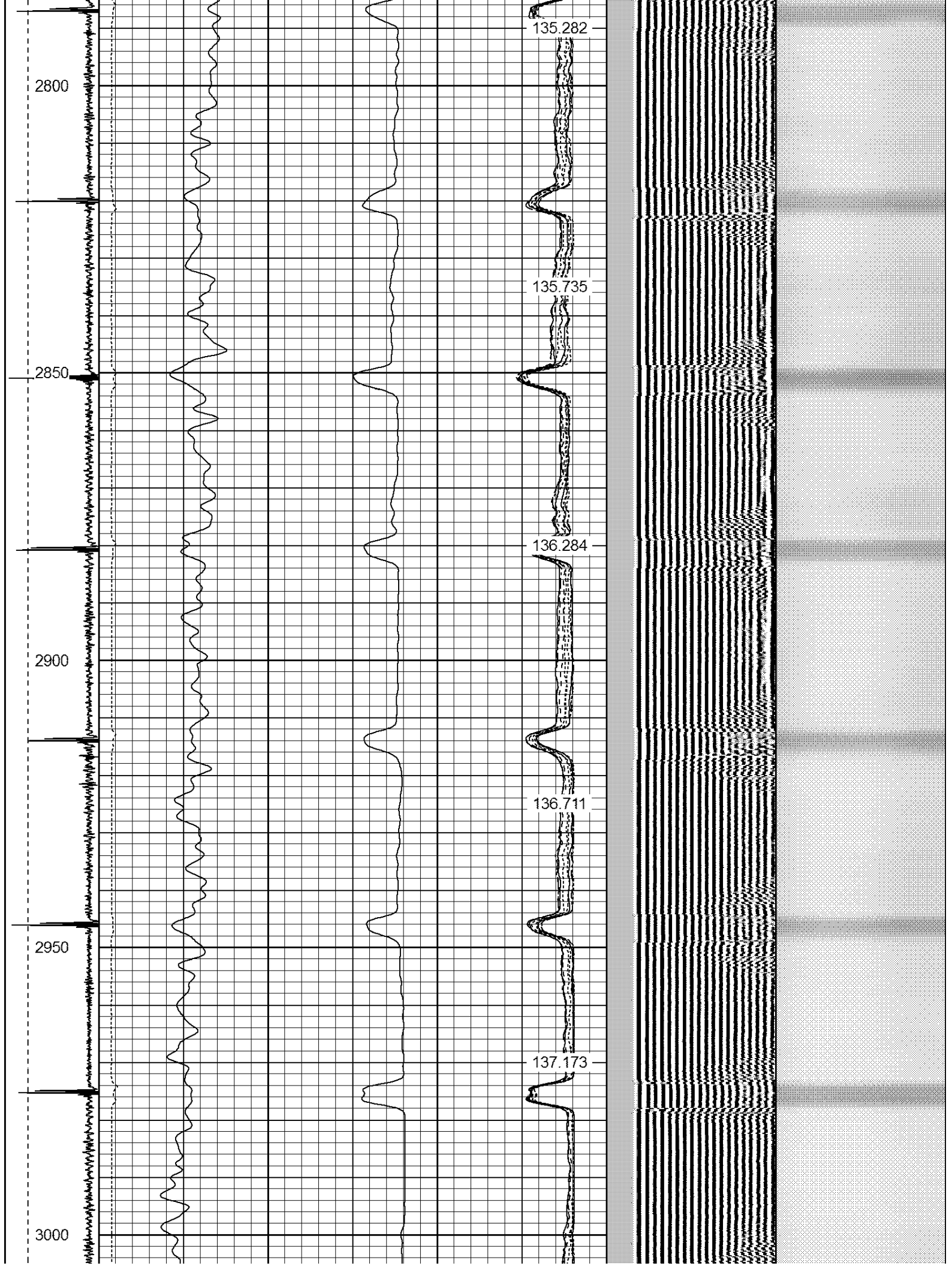






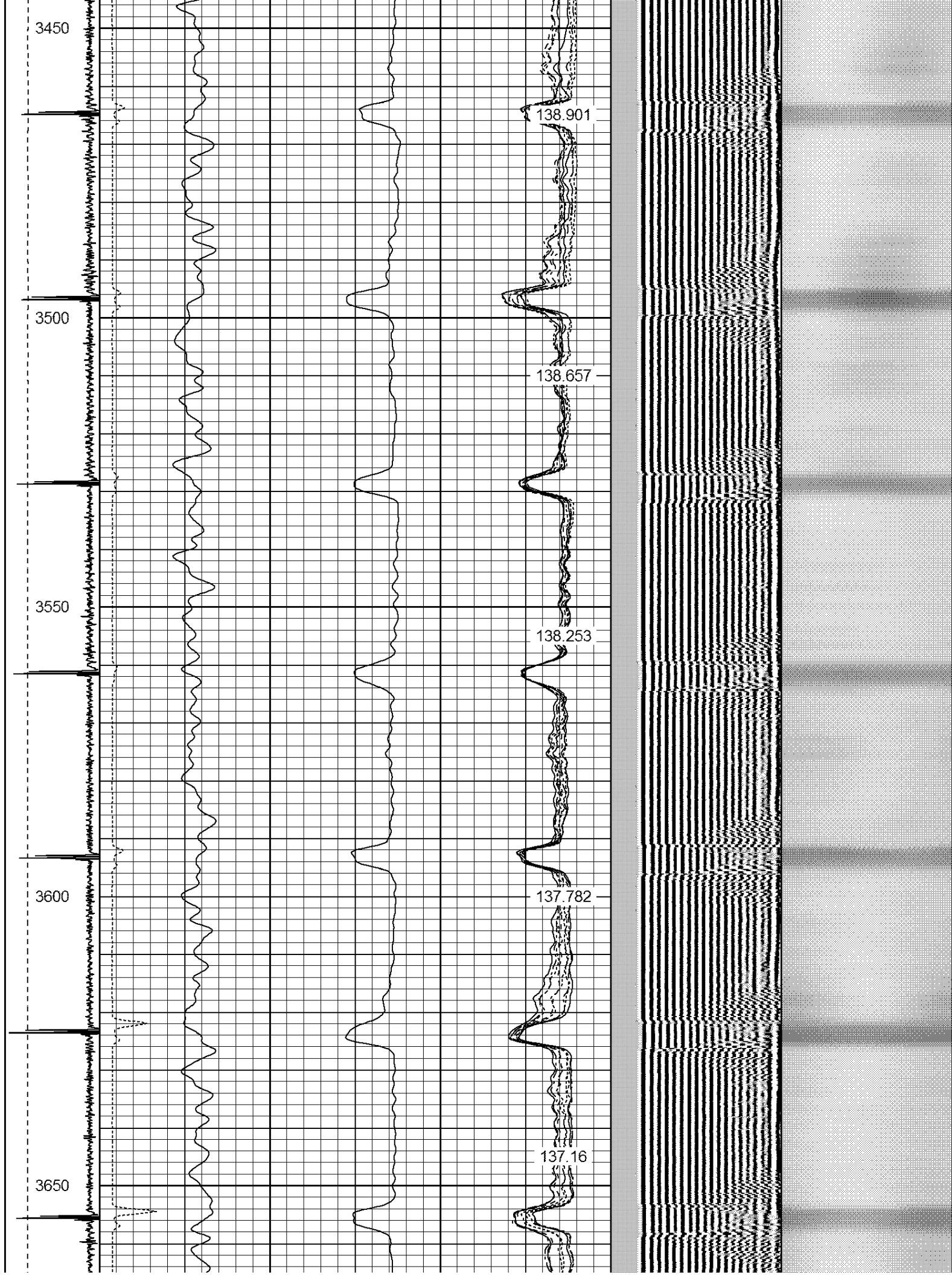


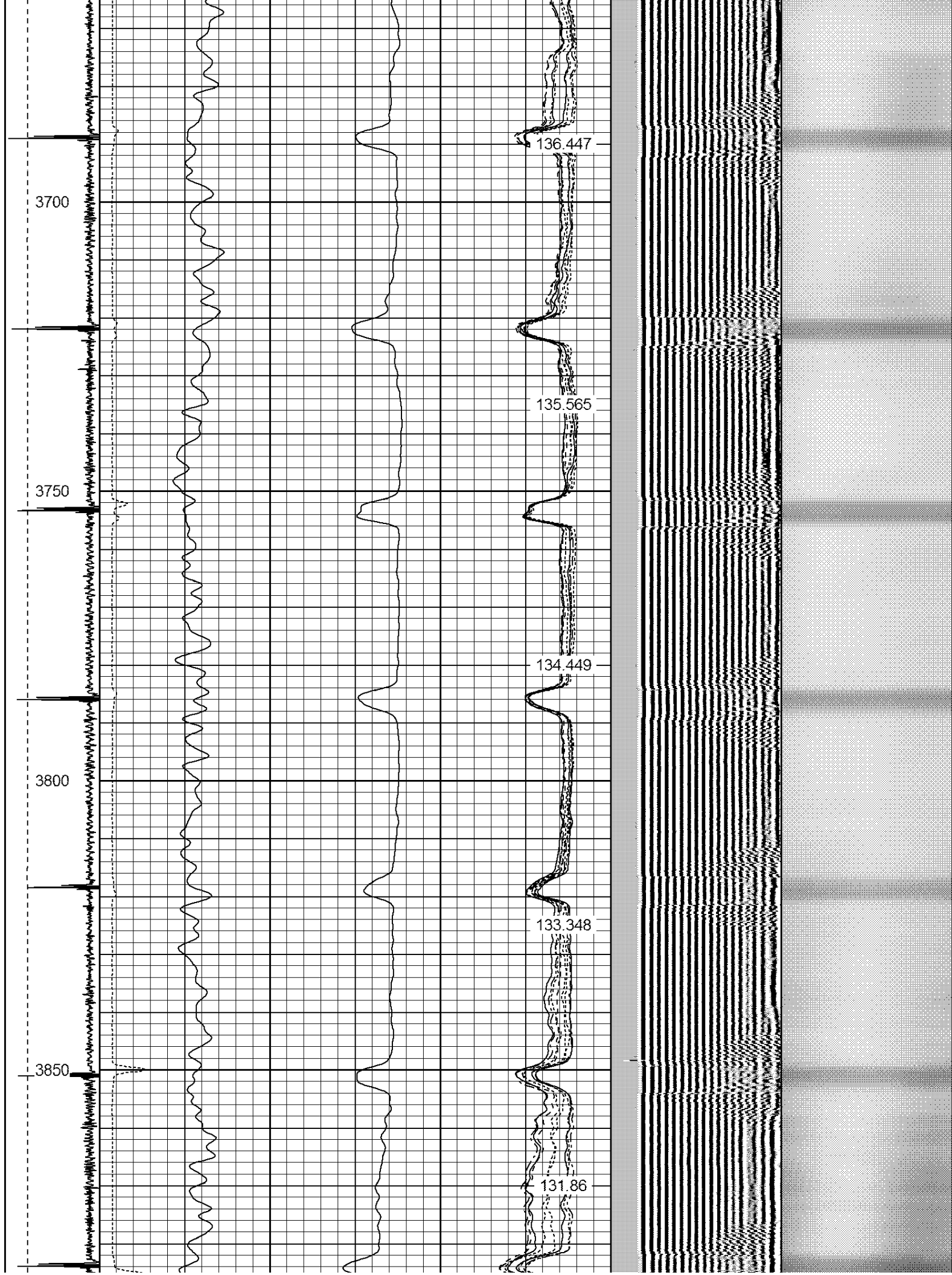




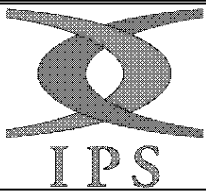
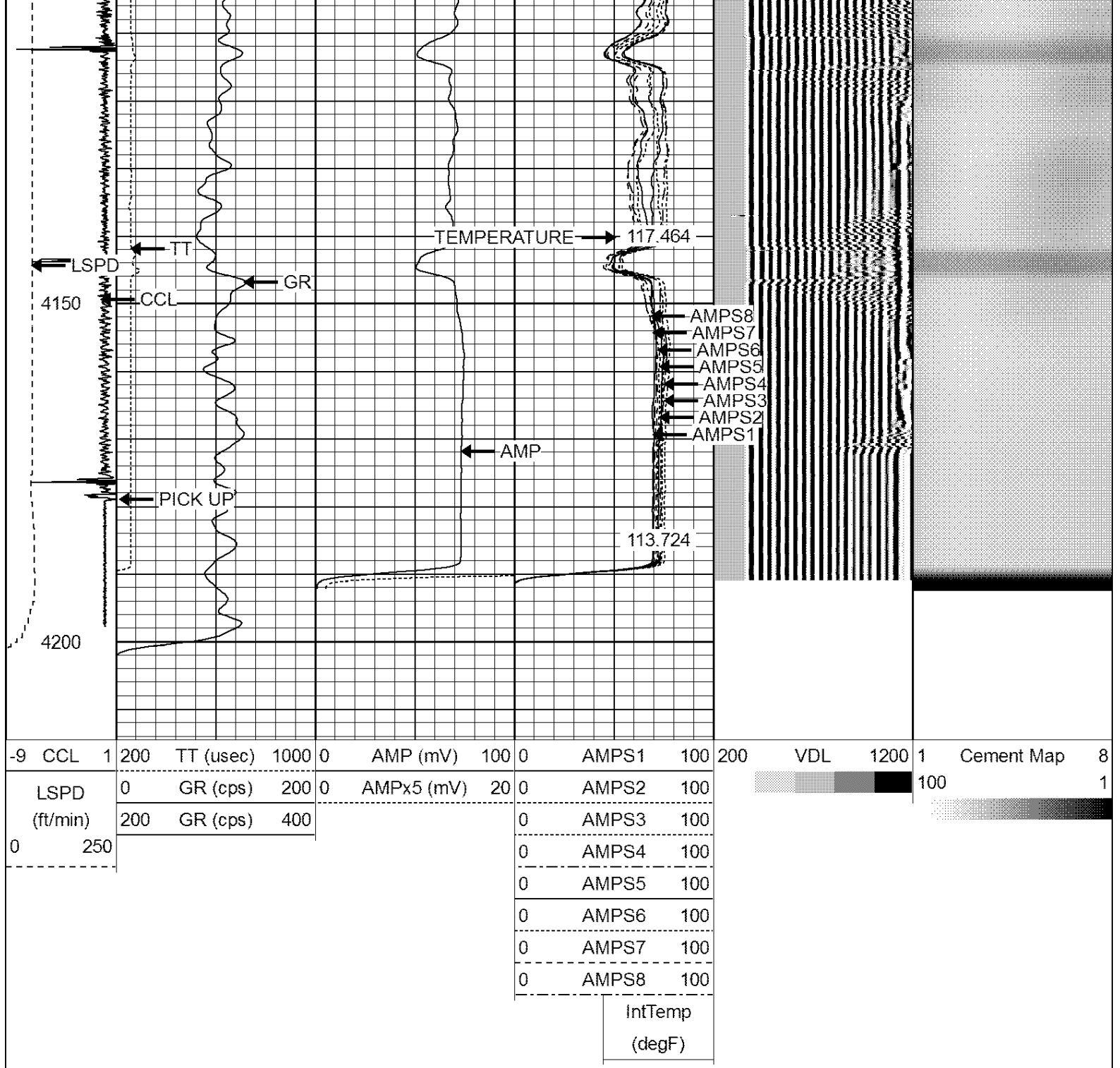






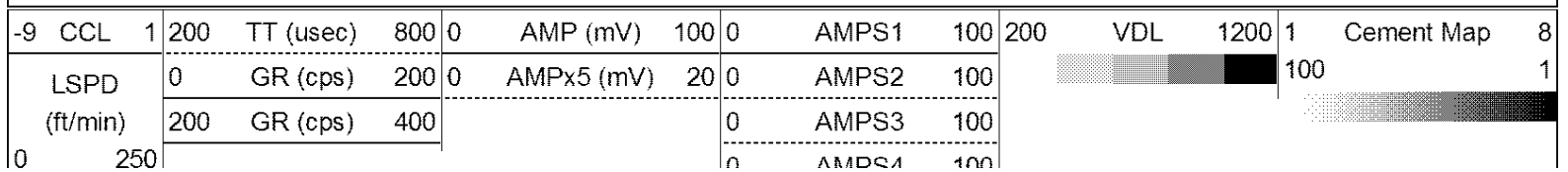






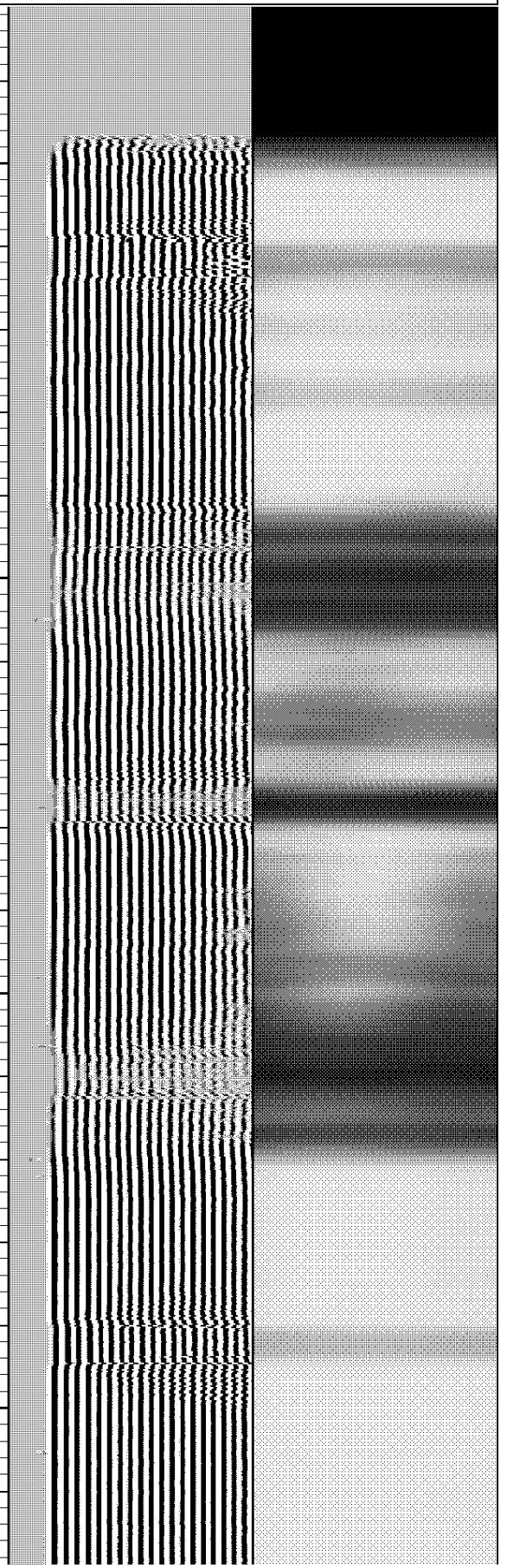
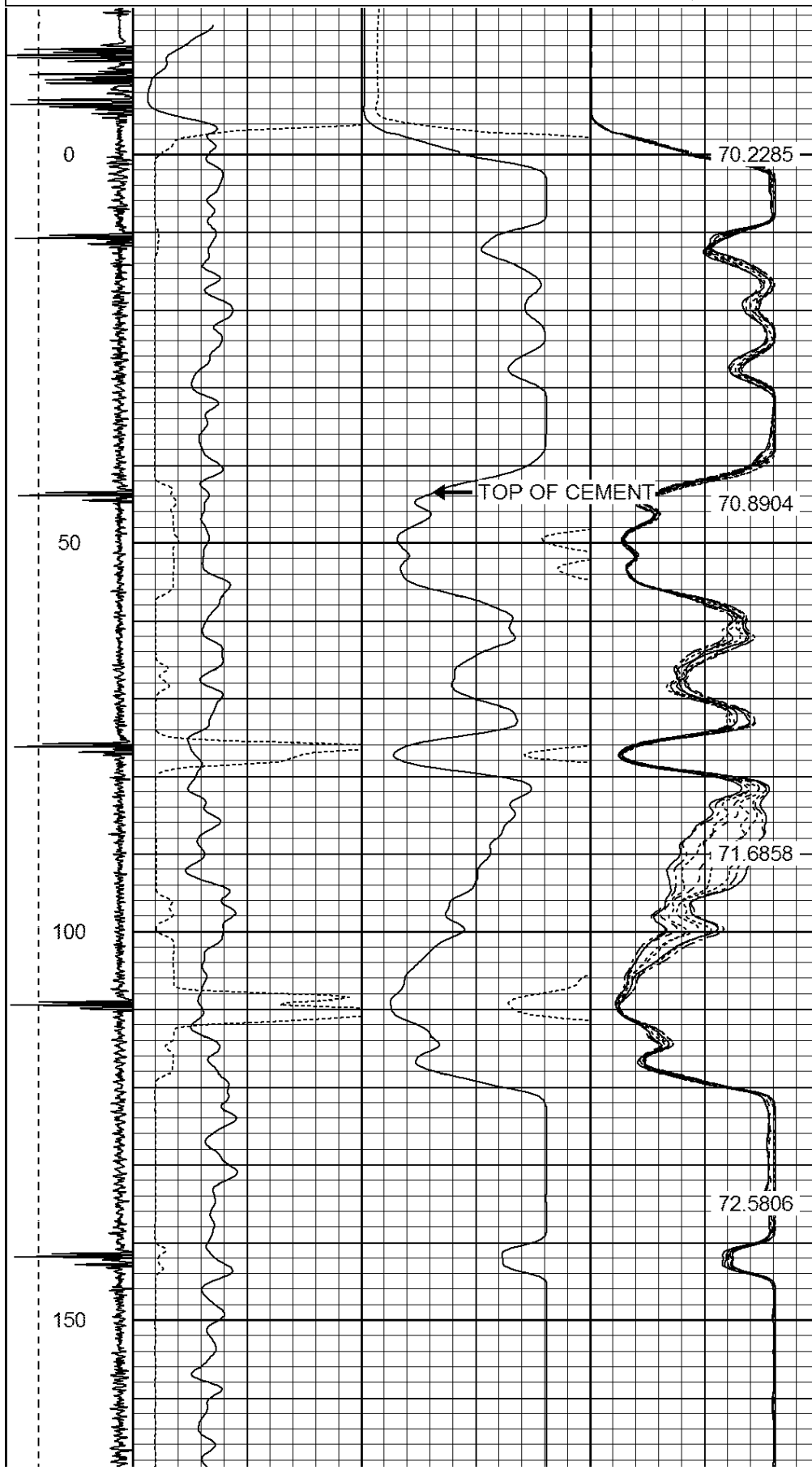
REPEAT PASS

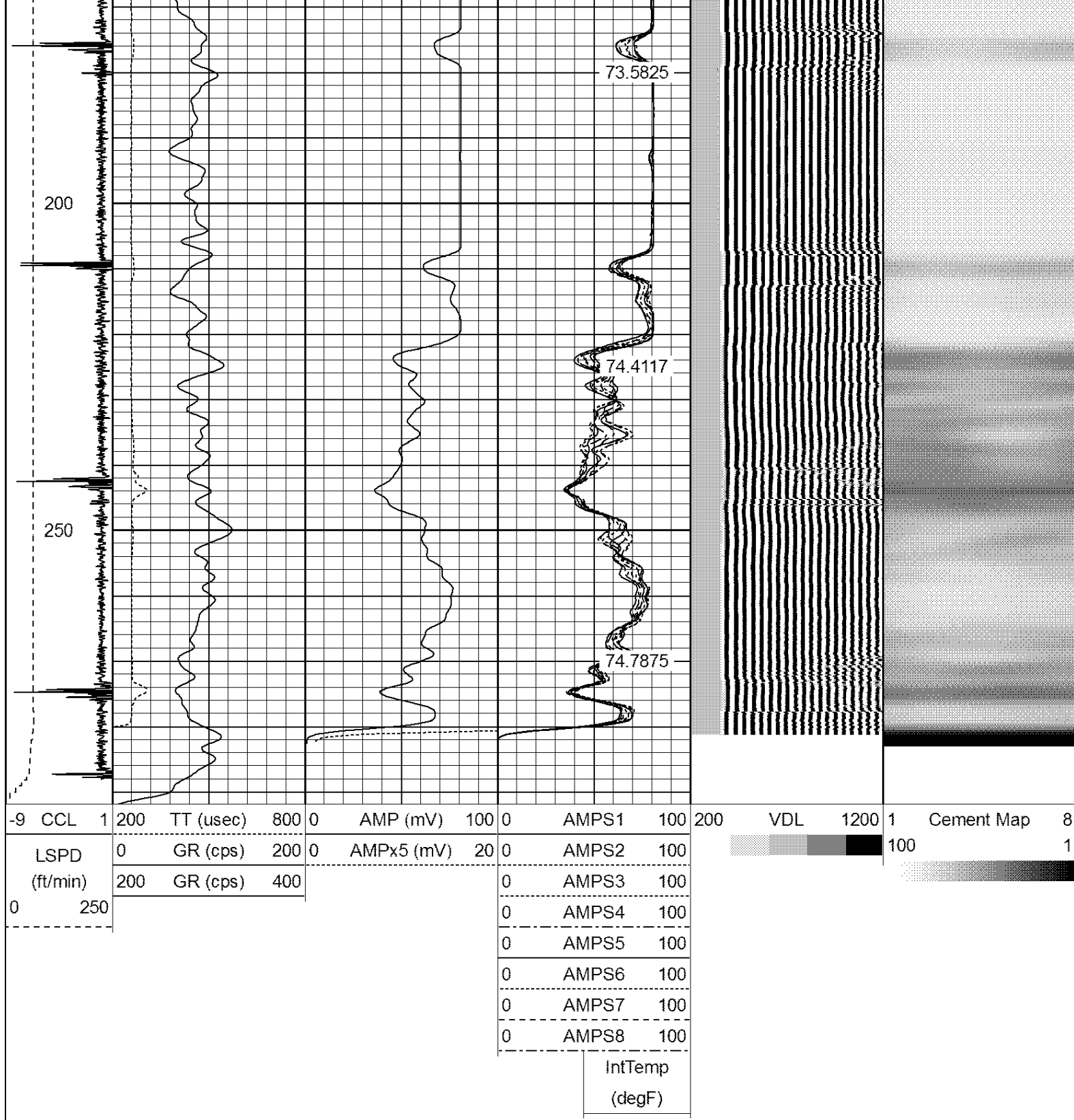
Database File: anderson mel gu 1.db
 Dataset Pathname: pass10
 Presentation Format: ips_rbt
 Dataset Creation: Mon Nov 23 12:34:59 2015 by Log 7.0 B1
 Charted by: Depth in Feet scaled 1:240



0	AMPS4	100
0	AMPS5	100
0	AMPS6	100
0	AMPS7	100
0	AMPS8	100

IntTemp
(degF)





Calibration Report

Database File: anderson mel gu 1.db
 Dataset Pathname: pass8
 Dataset Creation: Mon Nov 23 10:53:19 2015 by Log 7.0 B1

Gamma Ray Calibration Report

Serial Number: 275
 Tool Model: Probe
 Performed: Wed Jul 16 08:14:01 2014
 Calibrator Value: 120.0 cps

Background Reading:	30.0	cps
Calibrator Reading:	210.0	cps
Sensitivity:	1.0000	cps/cps

Compensated Neutron Calibration Report

Serial Number:	275
Tool Model:	Probe_B

CALIBRATION		Wed Jul 30 08:47:19 2008			
Detector	Readings		Target		Normalization
Short Space	5001.20	cps	0.00	cps	1.0000
Long Space	1029.31	cps	0.00	cps	1.0000

PRE-SURVEY VERIFICATION				
	Detector	Readings	Measured	Target
1)	Short Space	cps		
	Long Space	cps	pu	pu
2)	Short Space	cps		
	Long Space	cps	pu	
3)	Short Space	cps		
	Long Space	cps	pu	

POST-SURVEY VERIFICATION				
	Detector	Readings	Measured	Target
1)	Short Space	cps		
	Long Space	cps	pu	pu
2)	Short Space	cps		
	Long Space	cps	pu	pu
3)	Short Space	cps		
	Long Space	cps	pu	pu

Segmented Cement Bond Log Calibration Report

Serial Number:	Base	
Tool Model:	Probe	
Calibration Casing Diameter:	4.500	in
Calibration Depth:	223.770	ft

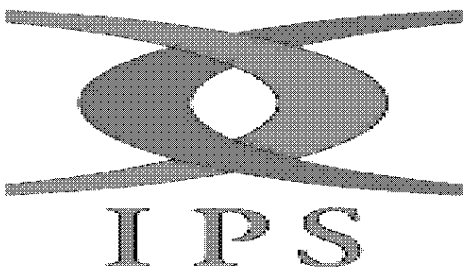
Master Calibration, performed Mon Nov 23 10:40:13 2015:						
	Raw (v)		Calibrated (mv)		Results	
	Zero	Cal	Zero	Cal	Gain	Offset
3'	0.012	2.500	1.500	81.196	32.033	1.114
CAL	1.553	2.500				
5'	0.011	2.298	1.500	81.196	34.847	1.109
SUM						
S1	0.011	2.498	0.500	81.000	32.365	0.141
S2	0.012	2.500	0.500	81.000	32.350	0.124
S3	0.010	2.500	0.500	81.000	32.333	0.167
S4	0.010	2.500	0.500	81.000	32.335	0.162
S5	0.011	2.500	0.500	81.000	32.348	0.129
S6	0.010	2.500	0.500	81.000	32.339	0.163
S7	0.015	2.497	0.500	81.000	32.430	0.008
S8	0.012	2.492	0.500	81.000	32.458	0.126

Internal Reference Calibration, performed Tue Jun 05 07:53:42 2012:

	Raw (v)		Calibrated (v)		Results	
	Zero	Cal	Zero	Cal	Gain	Offset
CAL	0.000	0.000	1.553	2.500	1.000	0.000

Air Zero Calibration, performed Mon Nov 23 10:07:32 2015:

	Raw (v)		Calibrated (v)		Results	
	Zero		Zero		Offset	
3'	0.000		0.000		0.000	
5'	0.000		0.000		0.000	
SUM						
S1	0.000		0.000		0.000	
S2	0.000		0.000		0.000	
S3	0.000		0.000		0.000	
S4	0.000		0.000		0.000	
S5	0.000		0.000		0.000	
S6	0.000		0.000		0.000	
S7	0.000		0.000		0.000	
S8	0.000		0.000		0.000	



Company ANADARKO PETROLEUM CORP.
 Well ANDERSON MEL GU 1
 Field WATTENBERG
 County WELD
 State COLORADO