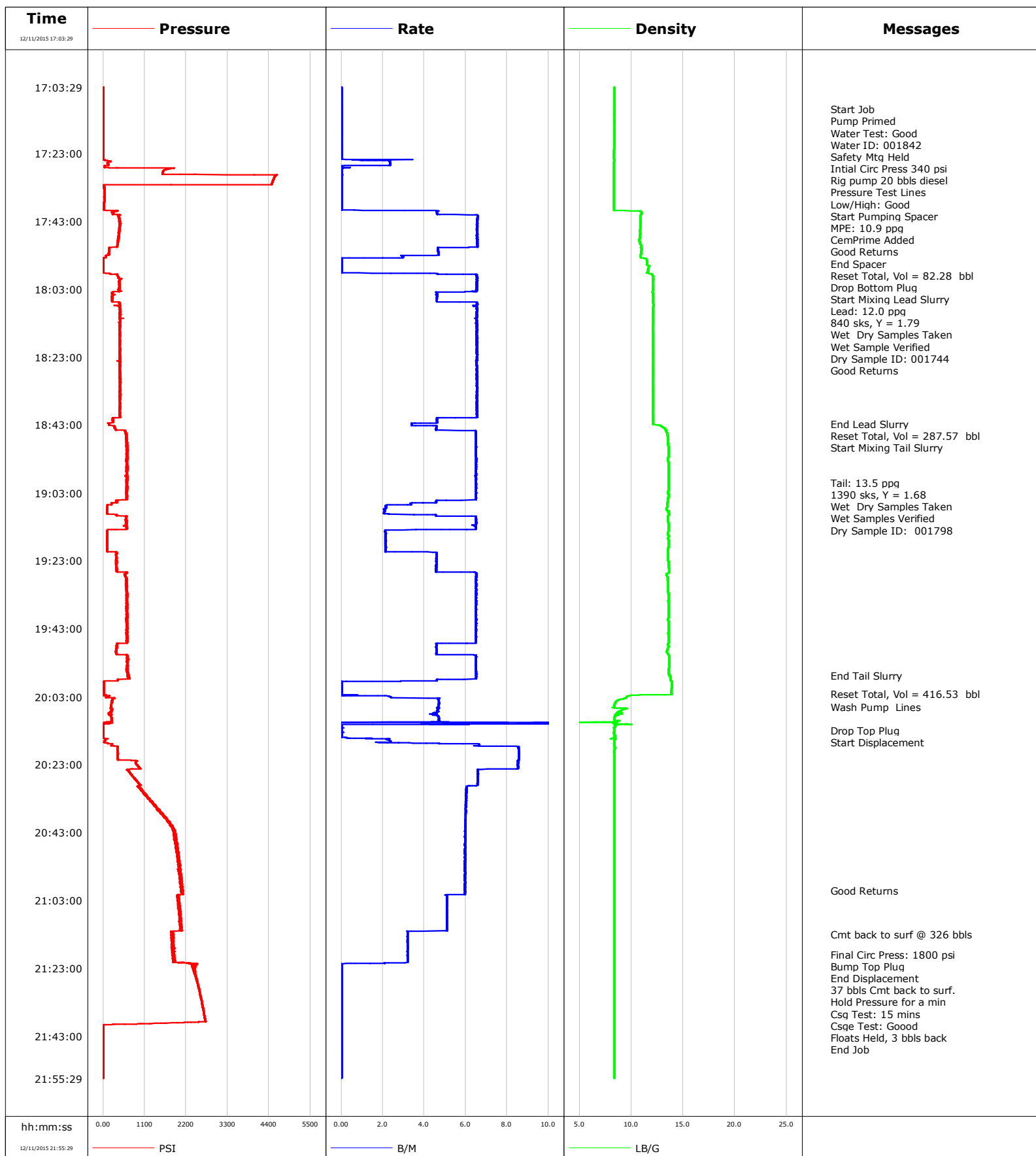


Well Cook 37N-28HZ
Field Wattenberg
Engineer Matlock/Terry
Country United States

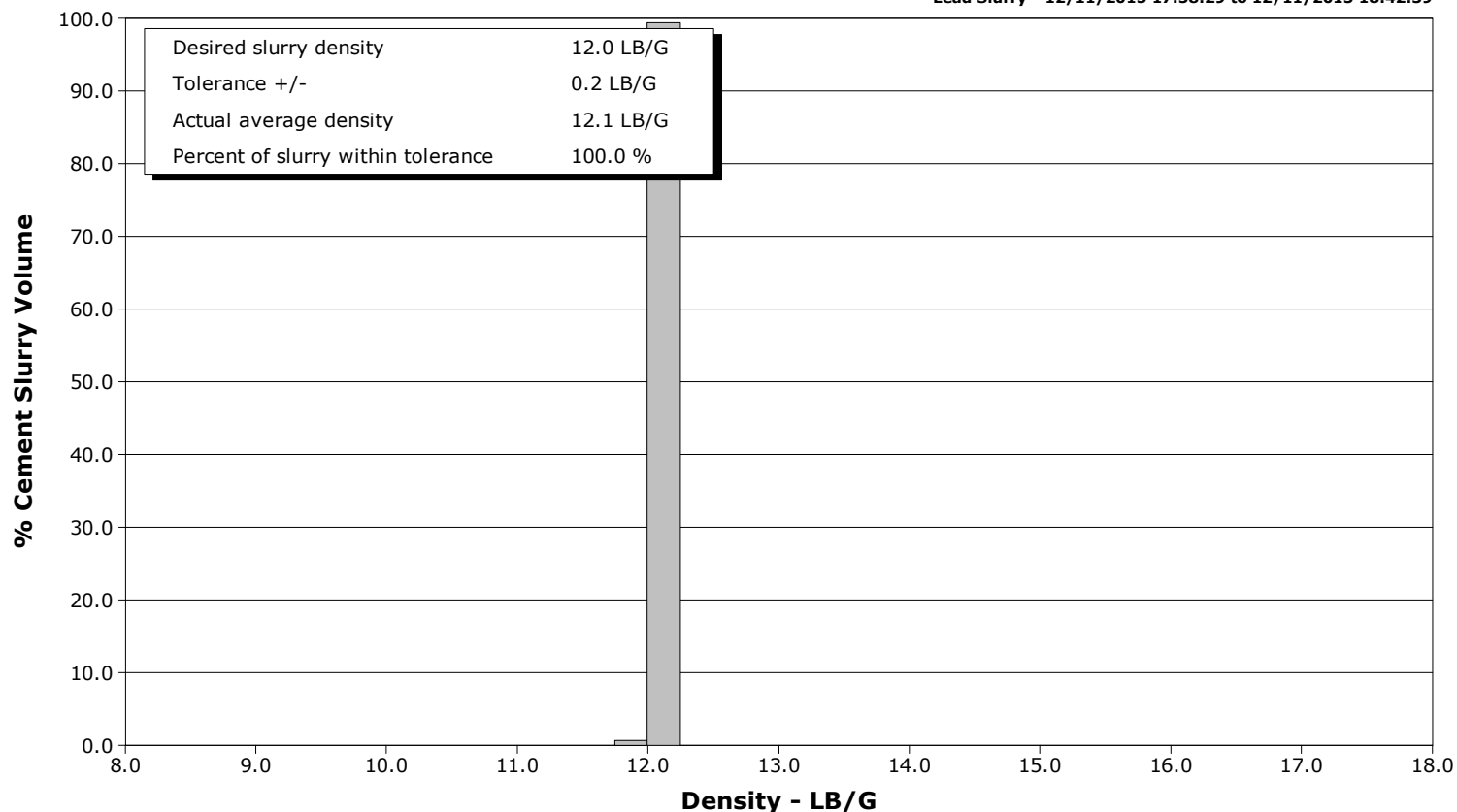
Client Anadarko
SIR No. CYUT-00134
Job Type Production
Job Date 12-11-2015



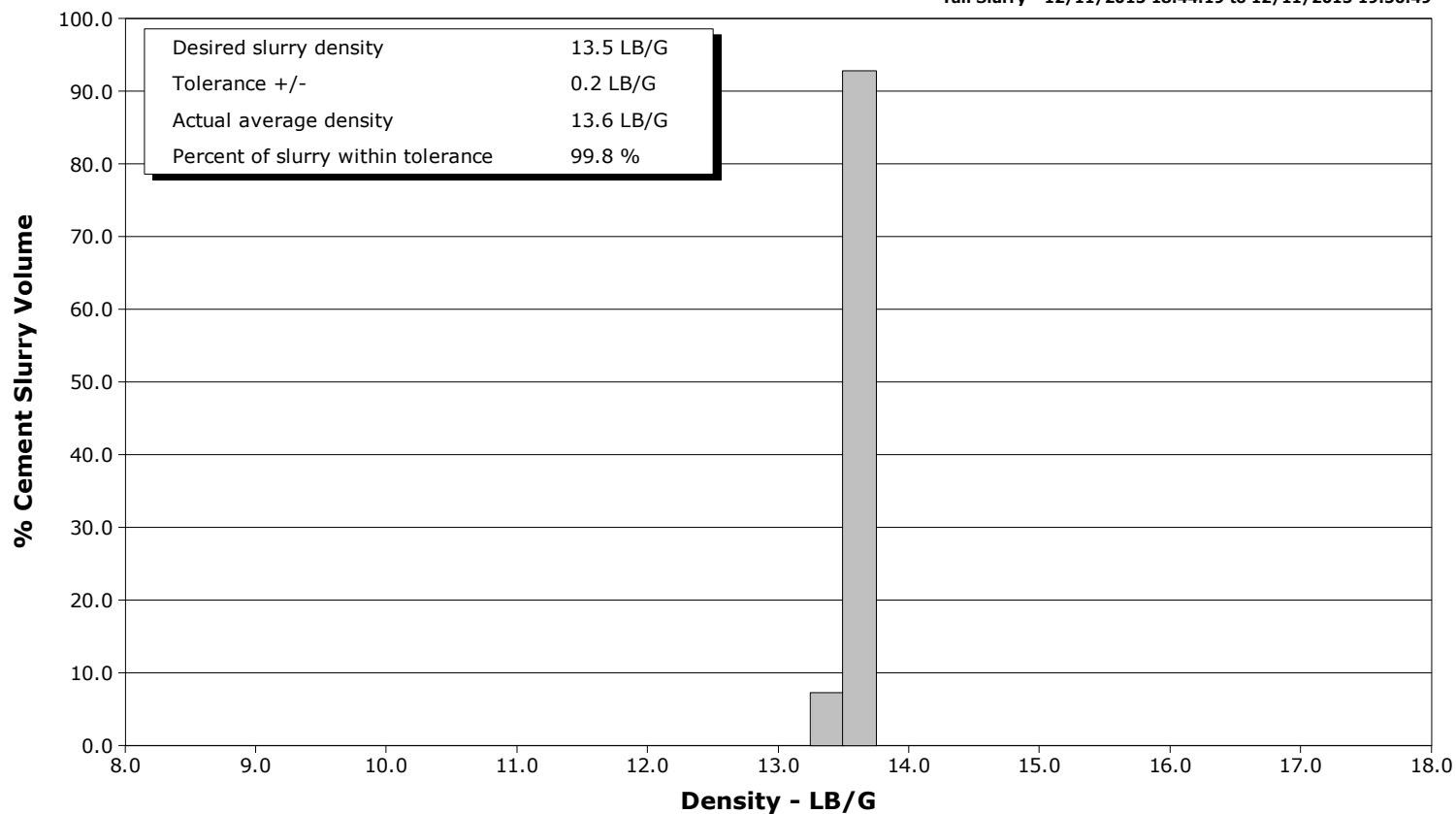
Well Cook 37N-28HZ
Field Wattenberg
Engineer Matlock/Terry
Country United States

Client Anadarko
SIR No. CYUT-00134
Job Type Production
Job Date 12-11-2015

Lead Slurry - 12/11/2015 17:58:29 to 12/11/2015 18:42:39



Tail Slurry - 12/11/2015 18:44:19 to 12/11/2015 19:56:49



Cementing Service Report

					Customer Anadarko			Job Number CYUT-00134	
Well Cook 37N-28HZ			Location (legal)			Schlumberger Location Cheyenne		Job Start Dec/11/2015	
Field Wattenberg		Formation Name/Type		Deviation deg		Bit Size 8.5 in		Well MD 15708.0 ft	
County Weld		State/Province CO		BHP psi		BHST 223 degF		BHCT 217 degF	
Well Master 0631658888		API/UWI 05123421440000						Pore Press. Gradient lb/gal	
Rig Name H&P 307		Drilled For Oil		Service Via Land		Casing/Liner			
						Depth, ft		Size, in	
						Weight, lb/ft		Grade	
Offshore Zone		Well Class New		Well Type Exploration		15708.0		5.5	
						0.0		0.0	
Drilling Fluid Type		Max. Density lb/gal		Plastic Viscosity cP		Tubing/Drill Pipe			
						T/D		Depth, ft	
						Size, in		Weight, lb/ft	
Service Line Cementing		Job Type Production						Grade	
								Thread	
Max. Allowed Tub. Press psi		Max. Allowed Ann. Press psi		WH Connection Double Cement head		Perforations/Open Hole			
						Top, ft		Bottom, ft	
						shot/ft		No. of Shots	
						ft		ft	
						ft		ft	
						Treat Down Casing		Displacement 363.0 bbl	
						Packer Type		Packer Depth ft	
						Tubing Vol. bbl		Casing Vol. bbl	
						Annular Vol. bbl		Openhole Vol. bbl	
Casing/Tubing Secured <input checked="" type="checkbox"/>		1 Hole Vol. Circulated prior to Cement <input checked="" type="checkbox"/>				Casing Tools		Squeeze Job	
Lift Pressure psi						Shoe Type Float		Squeeze Type	
Pipe Rotated <input type="checkbox"/>		Pipe Reciprocated <input type="checkbox"/>				Shoe Depth 15708.0 ft		Tool Type	
No. Centralizers		Top Plugs 1		Bottom Plugs 1		Stage Tool Type		Tool Depth ft	
Cement Head Type Double						Stage Tool Depth ft		Tail Pipe Size in	
Job Scheduled For Dec/11/2015 13:00		Arrived on Location Dec/11/2015 13:00		Leave Location Dec/11/2015 23:00		Collar Type Float		Tail Pipe Depth ft	
						Collar Depth 15619.0 ft		Sqz. Total Vol. bbl	
Date	Time 24-hr clock	Treating Pressure PSI	Flow Rate B/M	Density LB/G	Volume BBL	Solid Fraction NULL	Message		
12/11/2015	17:03:29	2	0.0	8.35	0.0	0			
12/11/2015	17:04:19	2	0.0	8.35	0.0	0			
12/11/2015	17:05:09	3	0.0	8.35	0.0	0			
12/11/2015	17:05:59	3	0.0	8.35	0.0	0			
12/11/2015	17:06:49	4	0.0	8.35	0.0	0			
12/11/2015	17:08:29	4	0.0	8.35	0.0	0			
12/11/2015	17:09:19	5	0.0	8.35	0.0	0			
12/11/2015	17:10:00	4	0.0	8.35	0.0	0	Start Job		
12/11/2015	17:10:09	4	0.0	8.35	0.0	0			
12/11/2015	17:10:59	4	0.0	8.35	0.0	0			
12/11/2015	17:11:00	4	0.0	8.35	0.0	0	Pump Primed		
12/11/2015	17:11:49	5	0.0	8.35	0.0	0			
12/11/2015	17:12:00	5	0.0	8.35	0.0	0	Water Test: Good		
12/11/2015	17:12:30	4	0.0	8.35	0.0	0	Water ID: 001842		
12/11/2015	17:12:39	4	0.0	8.35	0.0	0			
12/11/2015	17:13:00	4	0.0	8.35	0.0	0	Safety Mtg Held		
12/11/2015	17:13:29	5	0.0	8.35	0.0	0			
12/11/2015	17:14:00	4	0.0	8.35	0.0	0	Intial Circ Press 340 psi		
12/11/2015	17:14:19	5	0.0	8.35	0.0	0			
12/11/2015	17:15:00	5	0.0	8.35	0.0	0	Rig pump 20 bbls diesel		
12/11/2015	17:15:59	4	0.0	8.35	0.0	0			

Well			Field		Job Start		Customer		Job Number
Cook 37N-28HZ			Wattenberg		Dec/11/2015		Anadarko		CYUT-00134
Date	Time 24-hr clock	Treating Pressure PSI	Flow Rate B/M	Density LB/G	Volume BBL	Solid Fraction NULL	Message		
12/11/2015	17:17:39	5	0.0	8.35	0.0	0			
12/11/2015	17:18:29	5	0.0	8.35	0.0	0			
12/11/2015	17:19:19	5	0.0	8.35	0.0	0			
12/11/2015	17:20:00	5	0.0	8.35	0.0	0	Pressure Test Lines		
12/11/2015	17:20:09	5	0.0	8.35	0.0	0			
12/11/2015	17:20:59	5	0.0	8.35	0.0	0			
12/11/2015	17:21:49	5	0.0	8.35	0.0	0			
12/11/2015	17:22:39	5	0.0	8.35	0.0	0			
12/11/2015	17:23:29	6	0.0	8.35	0.0	0			
12/11/2015	17:24:19	5	0.0	8.35	0.0	0			
12/11/2015	17:25:09	109	2.2	8.35	0.6	0			
12/11/2015	17:25:59	118	2.4	8.34	2.5	0			
12/11/2015	17:26:49	27	0.0	8.35	4.0	0			
12/11/2015	17:27:39	1711	0.0	8.35	4.1	0			
12/11/2015	17:28:29	1584	0.0	8.35	4.1	0			
12/11/2015	17:29:19	4011	0.1	8.35	4.1	0			
12/11/2015	17:30:09	4536	0.0	8.35	4.1	0			
12/11/2015	17:30:59	4506	0.0	8.34	4.1	0			
12/11/2015	17:31:49	4481	0.0	8.35	4.1	0			
12/11/2015	17:32:00	4474	0.0	8.35	4.1	0	Low/High: Good		
12/11/2015	17:32:39	21	0.0	8.34	4.1	0			
12/11/2015	17:33:29	26	0.0	8.34	4.1	0			
12/11/2015	17:34:19	27	0.0	8.34	4.1	0			
12/11/2015	17:35:09	28	0.0	8.34	4.1	0			
12/11/2015	17:35:59	28	0.0	8.35	4.1	0			
12/11/2015	17:36:49	28	0.0	8.34	0.0	0			
12/11/2015	17:37:39	24	0.0	8.34	0.0	0			
12/11/2015	17:38:29	19	0.0	8.34	0.0	0			
12/11/2015	17:39:19	20	0.0	8.34	0.0	0			
12/11/2015	17:40:00	332	4.6	10.85	0.8	10	Start Pumping Spacer		
12/11/2015	17:40:09	357	4.6	10.92	1.5	10			
12/11/2015	17:40:59	259	4.6	10.95	5.4	13			
12/11/2015	17:41:49	410	6.6	10.86	10.6	17			
12/11/2015	17:42:00	423	6.6	10.86	11.9	18	MPE: 10.9 ppg		
12/11/2015	17:42:39	443	6.6	10.88	16.1	22			
12/11/2015	17:43:00	459	6.5	10.88	18.4	23	CemPrime Added		
12/11/2015	17:43:29	438	6.5	10.88	21.6	25			
12/11/2015	17:44:00	451	6.5	10.89	25.0	26	Good Returns		
12/11/2015	17:44:19	452	6.6	10.87	27.0	27			
12/11/2015	17:45:09	441	6.5	10.86	32.5	28			
12/11/2015	17:45:59	434	6.6	10.82	38.0	27			
12/11/2015	17:46:49	420	6.6	10.84	43.4	29			
12/11/2015	17:47:39	409	6.6	10.83	48.9	29			
12/11/2015	17:48:29	402	6.6	10.77	54.3	29			
12/11/2015	17:49:19	391	6.5	10.82	59.8	29			
12/11/2015	17:50:09	381	6.6	10.94	65.3	28			
12/11/2015	17:50:59	148	4.7	10.96	70.2	25			
12/11/2015	17:51:49	154	4.7	10.95	74.1	25			
12/11/2015	17:52:39	152	4.7	10.94	78.0	26			
12/11/2015	17:53:00	145	4.7	10.91	79.7	28	End Spacer		
12/11/2015	17:53:29	70	3.0	10.91	81.2	19			
12/11/2015	17:54:00	9	0.0	11.37	82.3	0	Reset Total, Vol = 82.28 bbl		
12/11/2015	17:54:19	9	0.0	11.50	82.3	0			
12/11/2015	17:55:00	11	0.0	11.53	82.3	0	Drop Bottom Plug		

Well			Field		Job Start		Customer		Job Number
Cook 37N-28HZ			Wattenberg		Dec/11/2015		Anadarko		CYUT-00134
Date	Time 24-hr clock	Treating Pressure PSI	Flow Rate B/M	Density LB/G	Volume BBL	Solid Fraction NULL	Message		
12/11/2015	17:55:59	11	0.0	11.55	82.3	0			
12/11/2015	17:56:49	12	0.0	11.65	82.3	0			
12/11/2015	17:57:39	4	0.0	11.61	82.3	0			
12/11/2015	17:58:29	185	4.6	11.94	0.7	22	Start Mixing Lead Slurry		
12/11/2015	17:59:19	397	6.5	12.11	5.9	25			
12/11/2015	18:00:00	474	6.5	12.12	10.4	25	Lead: 12.0 ppg		
12/11/2015	18:00:09	445	6.6	12.13	11.3	25			
12/11/2015	18:00:59	443	6.5	12.06	16.8	26			
12/11/2015	18:01:00	423	6.5	12.06	16.9	26	840 sks, Y = 1.79		
12/11/2015	18:01:49	445	6.5	12.08	22.2	26			
12/11/2015	18:02:39	439	6.5	12.08	27.7	26			
12/11/2015	18:03:00	439	6.5	12.09	30.0	26	Wet Dry Samples Taken		
12/11/2015	18:03:29	428	6.5	12.06	33.1	26			
12/11/2015	18:04:00	247	4.6	12.04	36.2	26	Wet Sample Verified		
12/11/2015	18:04:19	240	4.6	12.09	37.6	26			
12/11/2015	18:04:30	253	4.6	12.08	38.5	26	Dry Sample ID: 001744		
12/11/2015	18:05:00	239	4.6	12.08	40.8	26	Good Returns		
12/11/2015	18:05:09	240	4.6	12.09	41.5	26			
12/11/2015	18:05:59	246	4.6	12.11	45.3	23			
12/11/2015	18:06:49	422	6.2	12.08	49.2	24			
12/11/2015	18:07:39	451	6.5	12.17	54.7	25			
12/11/2015	18:08:29	451	6.5	12.10	60.1	26			
12/11/2015	18:09:19	451	6.5	12.12	65.5	26			
12/11/2015	18:10:09	445	6.5	12.12	71.0	26			
12/11/2015	18:10:59	452	6.5	12.12	76.4	26			
12/11/2015	18:11:49	448	6.5	12.12	81.9	25			
12/11/2015	18:12:39	446	6.5	12.11	87.3	25			
12/11/2015	18:13:29	453	6.5	12.11	92.8	25			
12/11/2015	18:14:19	431	6.5	12.05	98.2	24			
12/11/2015	18:15:09	452	6.5	12.07	103.7	24			
12/11/2015	18:15:59	443	6.5	12.09	109.1	24			
12/11/2015	18:16:49	441	6.5	12.10	114.5	25			
12/11/2015	18:17:39	451	6.5	12.09	120.0	25			
12/11/2015	18:18:29	433	6.5	12.10	125.4	25			
12/11/2015	18:19:19	445	6.5	12.09	130.9	25			
12/11/2015	18:20:09	446	6.6	12.09	136.3	25			
12/11/2015	18:20:59	447	6.5	12.09	141.8	25			
12/11/2015	18:21:49	441	6.5	12.08	147.2	25			
12/11/2015	18:22:39	436	6.5	12.08	152.7	25			
12/11/2015	18:23:29	438	6.5	12.08	158.2	25			
12/11/2015	18:24:19	454	6.5	12.08	163.6	25			
12/11/2015	18:25:09	457	6.5	12.09	169.0	25			
12/11/2015	18:25:59	450	6.5	12.08	174.5	25			
12/11/2015	18:26:49	437	6.5	12.09	179.9	25			
12/11/2015	18:27:39	449	6.5	12.09	185.4	25			
12/11/2015	18:28:29	441	6.5	12.09	190.8	25			
12/11/2015	18:29:19	436	6.5	12.08	196.3	25			
12/11/2015	18:30:09	447	6.5	12.08	201.7	25			
12/11/2015	18:30:59	442	6.5	12.07	207.2	25			
12/11/2015	18:31:49	451	6.6	12.08	212.6	25			
12/11/2015	18:32:39	443	6.5	12.08	218.1	25			
12/11/2015	18:33:29	447	6.5	12.09	223.6	25			
12/11/2015	18:34:19	432	6.6	12.08	229.0	25			
12/11/2015	18:35:09	449	6.5	12.10	234.5	25			

Well			Field		Job Start		Customer		Job Number	
Cook 37N-28HZ			Wattenberg		Dec/11/2015		Anadarko		CYUT-00134	
Date	Time 24-hr clock	Treating Pressure PSI	Flow Rate B/M	Density LB/G	Volume BBL	Solid Fraction NULL	Message			
12/11/2015	18:36:49	457	6.5	12.10	245.4	25				
12/11/2015	18:37:39	451	6.5	12.07	250.8	25				
12/11/2015	18:38:29	434	6.5	12.08	256.3	25				
12/11/2015	18:39:19	436	6.5	12.07	261.7	25				
12/11/2015	18:40:09	437	6.5	12.10	267.2	25				
12/11/2015	18:40:59	259	4.6	12.07	272.4	26				
12/11/2015	18:41:49	257	4.6	12.11	276.3	26				
12/11/2015	18:42:39	157	3.4	12.10	279.9	30	End Lead Slurry			
12/11/2015	18:43:29	302	4.6	12.93	283.1	26				
12/11/2015	18:44:00	317	4.6	13.19	285.4	29	Reset Total, Vol = 287.57 bbl			
12/11/2015	18:44:19	335	4.6	13.30	286.9	32	Start Mixing Tail Slurry			
12/11/2015	18:45:09	581	6.5	13.41	4.1	34				
12/11/2015	18:45:59	625	6.5	13.50	9.5	35				
12/11/2015	18:46:49	605	6.5	13.53	14.9	35				
12/11/2015	18:47:39	635	6.5	13.54	20.3	36				
12/11/2015	18:48:29	623	6.5	13.56	25.8	36				
12/11/2015	18:49:19	637	6.5	13.57	31.2	35				
12/11/2015	18:50:09	642	6.5	13.59	36.6	35				
12/11/2015	18:50:59	638	6.5	13.59	42.0	35				
12/11/2015	18:51:49	632	6.5	13.58	47.4	35				
12/11/2015	18:52:39	621	6.5	13.55	52.8	35				
12/11/2015	18:53:29	618	6.5	13.55	58.2	34				
12/11/2015	18:54:19	641	6.5	13.58	63.7	34				
12/11/2015	18:55:09	644	6.5	13.58	69.1	34				
12/11/2015	18:55:59	648	6.5	13.59	74.5	34				
12/11/2015	18:56:49	612	6.5	13.58	79.9	34				
12/11/2015	18:57:39	632	6.5	13.58	85.3	34				
12/11/2015	18:58:29	621	6.5	13.58	90.7	34				
12/11/2015	18:59:19	625	6.5	13.58	96.2	34				
12/11/2015	19:00:00	624	6.5	13.57	100.6	34	Tail: 13.5 ppg			
12/11/2015	19:00:09	637	6.5	13.57	101.6	34				
12/11/2015	19:00:59	624	6.5	13.57	107.0	34				
12/11/2015	19:01:00	636	6.5	13.57	107.1	34	1390 sks, Y = 1.68			
12/11/2015	19:01:49	639	6.5	13.58	112.4	34				
12/11/2015	19:02:00	639	6.5	13.57	113.6	34	Wet Dry Samples Taken			
12/11/2015	19:02:39	636	6.5	13.55	117.8	34				
12/11/2015	19:03:00	631	6.5	13.56	120.1	34	Wet Samples Verified			
12/11/2015	19:03:29	636	6.5	13.57	123.2	34				
12/11/2015	19:04:19	633	6.5	13.57	128.7	34				
12/11/2015	19:05:00	645	6.5	13.56	133.1	34	Dry Sample ID: 001798			
12/11/2015	19:05:09	340	5.8	13.54	134.1	34				
12/11/2015	19:05:59	228	3.6	13.45	137.9	33				
12/11/2015	19:06:49	112	2.1	13.45	140.4	28				
12/11/2015	19:07:39	109	2.2	13.38	142.2	36				
12/11/2015	19:08:29	97	2.1	13.56	144.0	23				
12/11/2015	19:09:19	119	2.3	13.61	145.7	28				
12/11/2015	19:10:09	611	6.5	13.53	149.9	33				
12/11/2015	19:10:59	615	6.5	13.55	155.3	35				
12/11/2015	19:11:49	621	6.5	13.57	160.7	35				
12/11/2015	19:12:39	603	6.4	13.57	166.1	35				
12/11/2015	19:13:29	629	6.5	13.58	171.5	35				
12/11/2015	19:14:19	112	2.1	13.58	174.9	36				
12/11/2015	19:15:09	106	2.1	13.55	176.7	36				
12/11/2015	19:15:59	105	2.1	13.57	178.5	36				

Well			Field		Job Start		Customer		Job Number	
Cook 37N-28HZ			Wattenberg		Dec/11/2015		Anadarko		CYUT-00134	
Date	Time 24-hr clock	Treating Pressure PSI	Flow Rate B/M	Density LB/G	Volume BBL	Solid Fraction NULL	Message			
12/11/2015	19:17:39	108	2.1	13.59	182.0	36				
12/11/2015	19:18:29	108	2.1	13.58	183.8	35				
12/11/2015	19:19:19	109	2.1	13.56	185.6	35				
12/11/2015	19:20:09	106	2.1	13.55	187.4	35				
12/11/2015	19:20:59	362	4.6	13.55	190.5	35				
12/11/2015	19:21:49	350	4.6	13.56	194.3	34				
12/11/2015	19:22:39	339	4.6	13.55	198.1	34				
12/11/2015	19:23:29	358	4.6	13.57	202.0	33				
12/11/2015	19:24:19	354	4.6	13.58	205.8	32				
12/11/2015	19:25:09	346	4.6	13.60	209.6	32				
12/11/2015	19:25:59	359	4.6	13.65	213.4	33				
12/11/2015	19:26:49	633	6.5	13.47	218.1	35				
12/11/2015	19:27:39	602	6.5	13.45	223.5	37				
12/11/2015	19:28:29	608	6.5	13.51	229.0	37				
12/11/2015	19:29:19	626	6.5	13.53	234.4	36				
12/11/2015	19:30:09	621	6.5	13.53	239.8	36				
12/11/2015	19:30:59	626	6.5	13.53	245.2	35				
12/11/2015	19:31:49	631	6.5	13.53	250.6	35				
12/11/2015	19:32:39	640	6.5	13.57	256.1	35				
12/11/2015	19:33:29	631	6.5	13.57	261.5	34				
12/11/2015	19:34:19	628	6.5	13.58	266.9	34				
12/11/2015	19:35:09	641	6.5	13.57	272.3	34				
12/11/2015	19:35:59	627	6.5	13.57	277.7	34				
12/11/2015	19:36:49	655	6.5	13.58	283.2	34				
12/11/2015	19:37:39	649	6.5	13.58	288.6	34				
12/11/2015	19:38:29	625	6.5	13.58	294.0	34				
12/11/2015	19:39:19	658	6.5	13.58	299.4	34				
12/11/2015	19:40:09	630	6.5	13.55	304.8	34				
12/11/2015	19:40:59	621	6.5	13.57	310.2	34				
12/11/2015	19:41:49	619	6.5	13.58	315.7	34				
12/11/2015	19:42:39	632	6.5	13.59	321.1	34				
12/11/2015	19:43:29	639	6.5	13.58	326.5	34				
12/11/2015	19:44:19	633	6.5	13.56	331.9	34				
12/11/2015	19:45:09	629	6.5	13.59	337.3	34				
12/11/2015	19:45:59	626	6.5	13.60	342.7	34				
12/11/2015	19:46:49	621	6.5	13.60	348.2	34				
12/11/2015	19:47:39	375	4.6	13.56	353.0	35				
12/11/2015	19:48:29	373	4.6	13.58	356.8	29				
12/11/2015	19:49:19	343	4.6	13.46	360.6	27				
12/11/2015	19:50:09	348	4.6	13.46	364.4	30				
12/11/2015	19:50:59	647	6.5	13.63	368.7	34				
12/11/2015	19:51:49	633	6.5	13.65	374.1	35				
12/11/2015	19:52:39	662	6.5	13.65	379.6	36				
12/11/2015	19:53:29	653	6.5	13.63	385.0	35				
12/11/2015	19:54:19	639	6.5	13.62	390.4	35				
12/11/2015	19:55:09	630	6.5	13.59	395.8	35				
12/11/2015	19:55:59	641	6.5	13.61	401.2	35				
12/11/2015	19:56:49	691	6.5	13.69	406.6	23	End Tail Slurry			
12/11/2015	19:57:39	678	6.5	13.80	412.1	32				
12/11/2015	19:58:29	18	2.9	13.84	416.4	44				
12/11/2015	19:59:19	17	0.0	13.91	416.5	0				
12/11/2015	20:00:09	16	0.0	13.90	416.5	0				
12/11/2015	20:00:59	4	0.0	13.90	416.5	0				
12/11/2015	20:01:49	18	0.0	13.84	416.5	0				

Well			Field		Job Start		Customer		Job Number
Cook 37N-28HZ			Wattenberg		Dec/11/2015		Anadarko		CYUT-00134
Date	Time 24-hr clock	Treating Pressure PSI	Flow Rate B/M	Density LB/G	Volume BBL	Solid Fraction NULL	Message		
12/11/2015	20:02:39	73	0.8	10.09	0.1	44			
12/11/2015	20:03:29	276	4.7	9.45	1.8	43			
12/11/2015	20:04:19	235	4.7	8.61	5.7	63			
12/11/2015	20:05:09	211	4.7	8.40	9.7	65			
12/11/2015	20:05:59	213	4.7	8.37	13.6	69			
12/11/2015	20:06:00	214	4.7	8.36	13.7	70	Wash Pump Lines		
12/11/2015	20:06:49	245	4.7	9.21	17.5	52			
12/11/2015	20:07:39	216	4.6	8.65	21.3	35			
12/11/2015	20:08:29	150	4.4	8.50	25.1	24			
12/11/2015	20:09:19	222	4.7	8.38	29.0	9			
12/11/2015	20:10:09	221	4.7	8.90	32.9	27			
12/11/2015	20:10:59	197	11.3	8.30	38.4	0			
12/11/2015	20:11:49	5	0.0	8.42	0.0	0			
12/11/2015	20:12:39	9	0.0	8.36	0.0	0			
12/11/2015	20:13:00	8	0.0	8.36	0.0	0	Drop Top Plug		
12/11/2015	20:13:29	9	0.0	8.35	0.0	0			
12/11/2015	20:14:19	8	0.0	8.40	0.0	0			
12/11/2015	20:15:00	8	0.0	8.37	0.0	0	Start Displacement		
12/11/2015	20:15:09	9	0.3	8.33	0.1	0			
12/11/2015	20:15:59	49	2.3	8.39	1.5	0			
12/11/2015	20:16:49	126	4.7	8.39	3.6	0			
12/11/2015	20:17:39	371	7.7	8.38	9.0	0			
12/11/2015	20:18:29	386	8.6	8.40	16.1	0			
12/11/2015	20:19:19	383	8.6	8.34	23.2	0			
12/11/2015	20:20:09	393	8.6	8.36	30.4	0			
12/11/2015	20:20:59	387	8.6	8.37	37.5	0			
12/11/2015	20:21:49	776	8.5	8.36	44.6	0			
12/11/2015	20:22:39	870	8.5	8.36	51.7	0			
12/11/2015	20:23:29	919	8.5	8.36	58.8	0			
12/11/2015	20:24:19	993	8.5	8.36	65.9	0			
12/11/2015	20:25:09	673	6.6	8.36	71.6	0			
12/11/2015	20:25:59	754	6.6	8.36	77.1	0			
12/11/2015	20:26:49	810	6.6	8.36	82.6	0			
12/11/2015	20:27:39	866	6.6	8.36	88.0	0			
12/11/2015	20:28:29	947	6.6	8.36	93.5	0			
12/11/2015	20:29:19	945	6.2	8.36	99.0	0			
12/11/2015	20:30:09	993	6.0	8.36	104.0	0			
12/11/2015	20:30:59	1053	6.0	8.36	109.1	0			
12/11/2015	20:31:49	1148	6.0	8.36	114.1	0			
12/11/2015	20:32:39	1185	6.0	8.36	119.1	0			
12/11/2015	20:33:29	1262	6.0	8.36	124.1	0			
12/11/2015	20:34:19	1320	6.0	8.36	129.1	0			
12/11/2015	20:35:09	1400	6.0	8.36	134.1	0			
12/11/2015	20:35:59	1446	6.0	8.36	139.1	0			
12/11/2015	20:36:49	1477	6.0	8.36	144.1	0			
12/11/2015	20:37:39	1554	6.0	8.36	149.1	0			
12/11/2015	20:38:29	1641	6.0	8.36	154.1	0			
12/11/2015	20:39:19	1714	6.0	8.36	159.1	0			
12/11/2015	20:40:09	1775	6.0	8.36	164.1	0			
12/11/2015	20:40:59	1802	6.0	8.36	169.1	0			
12/11/2015	20:41:49	1841	6.0	8.36	174.1	0			
12/11/2015	20:42:39	1862	6.0	8.36	179.0	0			
12/11/2015	20:43:29	1925	6.0	8.36	184.0	0			
12/11/2015	20:44:19	1929	6.0	8.36	189.0	0			

Well			Field		Job Start		Customer		Job Number	
Cook 37N-28HZ			Wattenberg		Dec/11/2015		Anadarko		CYUT-00134	
Date	Time 24-hr clock	Treating Pressure PSI	Flow Rate B/M	Density LB/G	Volume BBL	Solid Fraction NULL	Message			
12/11/2015	20:45:59	1918	6.0	8.36	198.9	0				
12/11/2015	20:46:49	1957	6.0	8.36	203.9	0				
12/11/2015	20:47:39	1927	6.0	8.36	208.9	0				
12/11/2015	20:48:29	1955	6.0	8.36	213.9	0				
12/11/2015	20:49:19	1962	6.0	8.36	218.8	0				
12/11/2015	20:50:09	2011	6.0	8.36	223.8	0				
12/11/2015	20:50:59	2012	6.0	8.36	228.8	0				
12/11/2015	20:51:49	2018	6.0	8.36	233.8	0				
12/11/2015	20:52:39	2016	6.0	8.36	238.7	0				
12/11/2015	20:53:29	2002	6.0	8.36	243.7	0				
12/11/2015	20:54:19	2019	6.0	8.36	248.7	0				
12/11/2015	20:55:09	2066	6.0	8.36	253.6	0				
12/11/2015	20:55:59	2065	6.0	8.36	258.6	0				
12/11/2015	20:56:49	2075	6.0	8.36	263.6	0				
12/11/2015	20:57:39	2059	6.0	8.36	268.6	0				
12/11/2015	20:58:29	2056	6.0	8.36	273.5	0				
12/11/2015	20:59:19	2054	6.0	8.36	278.5	0				
12/11/2015	21:00:00	2124	6.0	8.36	282.6	0	Good Returns			
12/11/2015	21:00:09	2085	6.0	8.36	283.5	0				
12/11/2015	21:00:59	2103	6.0	8.36	288.4	0				
12/11/2015	21:01:49	1990	5.1	8.36	293.1	0				
12/11/2015	21:02:39	1978	5.1	8.36	297.3	0				
12/11/2015	21:03:29	2009	5.1	8.36	301.5	0				
12/11/2015	21:04:19	1986	5.1	8.36	305.8	0				
12/11/2015	21:05:09	2037	5.1	8.36	310.0	0				
12/11/2015	21:05:59	2031	5.1	8.36	314.3	0				
12/11/2015	21:06:49	2045	5.1	8.36	318.5	0				
12/11/2015	21:07:39	2032	5.1	8.36	322.8	0				
12/11/2015	21:08:29	2026	5.1	8.36	327.0	0				
12/11/2015	21:09:19	2039	5.1	8.36	331.3	0				
12/11/2015	21:10:09	2064	5.1	8.36	335.5	0				
12/11/2015	21:10:59	2081	5.1	8.36	339.7	0				
12/11/2015	21:11:49	2097	5.1	8.36	344.0	0				
12/11/2015	21:12:39	1828	3.2	8.36	347.2	0				
12/11/2015	21:13:00	1847	3.2	8.36	348.3	0	Cmt back to surf @ 326 bbls			
12/11/2015	21:13:29	1868	3.2	8.36	349.8	0				
12/11/2015	21:14:19	1816	3.2	8.36	352.5	0				
12/11/2015	21:15:09	1837	3.2	8.36	355.1	0				
12/11/2015	21:15:59	1861	3.2	8.36	357.8	0				
12/11/2015	21:16:49	1838	3.2	8.36	360.5	0				
12/11/2015	21:17:39	1868	3.2	8.36	363.1	0				
12/11/2015	21:18:29	1857	3.2	8.36	365.8	0				
12/11/2015	21:19:00	1887	3.2	8.36	367.4	0	Final Circ Press: 1800 psi			
12/11/2015	21:19:19	1861	3.2	8.36	368.4	0				
12/11/2015	21:20:09	1848	3.2	8.36	371.1	0				
12/11/2015	21:20:59	1874	3.2	8.36	373.8	0				
12/11/2015	21:21:49	2490	0.0	8.36	375.7	0	Bump Top Plug			
12/11/2015	21:21:55	2473	0.0	8.36	375.7	0	End Displacement			
12/11/2015	21:22:00	2346	0.0	8.36	375.7	0	37 bbls Cmt back to surf.			
12/11/2015	21:22:39	2364	0.0	8.36	375.7	0				
12/11/2015	21:23:29	2403	0.0	8.36	375.7	0				
12/11/2015	21:24:19	2447	0.0	8.36	375.7	0				
12/11/2015	21:25:09	2436	0.0	8.36	375.7	0				
12/11/2015	21:25:59	2469	0.0	8.36	375.7	0				

Well			Field		Job Start	Customer	Job Number
Cook 37N-28HZ			Wattenberg		Dec/11/2015	Anadarko	CYUT-00134
Date	Time 24-hr clock	Treating Pressure PSI	Flow Rate B/M	Density LB/G	Volume BBL	Solid Fraction NULL	Message
12/11/2015	21:26:49	2492	0.0	8.36	375.7	0	
12/11/2015	21:27:39	2506	0.0	8.36	375.7	0	
12/11/2015	21:28:29	2529	0.0	8.36	375.7	0	
12/11/2015	21:29:00	2540	0.0	8.36	375.7	0	Csg Test: 15 mins
12/11/2015	21:29:19	2546	0.0	8.36	375.7	0	
12/11/2015	21:30:09	2560	0.0	8.36	375.7	0	
12/11/2015	21:30:59	2578	0.0	8.36	375.7	0	
12/11/2015	21:31:49	2592	0.0	8.36	375.7	0	
12/11/2015	21:32:39	2608	0.0	8.36	375.7	0	
12/11/2015	21:33:29	2624	0.0	8.36	375.7	0	
12/11/2015	21:34:19	2639	0.0	8.36	375.7	0	
12/11/2015	21:35:09	2653	0.0	8.36	375.7	0	
12/11/2015	21:35:59	2667	0.0	8.36	375.7	0	
12/11/2015	21:36:49	2680	0.0	8.36	375.7	0	
12/11/2015	21:37:39	2694	0.0	8.36	375.7	0	
12/11/2015	21:38:29	2709	0.0	8.36	375.7	0	
12/11/2015	21:39:00	2238	0.0	8.36	375.7	0	Csge Test: Goodd
12/11/2015	21:39:19	1272	0.0	8.36	375.7	0	
12/11/2015	21:40:00	3	0.0	8.36	375.7	0	Floats Held, 3 bbls back
12/11/2015	21:40:02	1	0.0	8.36	375.7	0	End Job
12/11/2015	21:40:09	2	0.0	8.36	375.7	0	
12/11/2015	21:40:59	2	0.0	8.36	375.7	0	
12/11/2015	21:41:49	2	0.0	8.36	375.7	0	
12/11/2015	21:43:29	3	0.0	8.36	375.7	0	
12/11/2015	21:44:19	3	0.0	8.36	375.7	0	
12/11/2015	21:45:09	2	0.0	8.36	375.7	0	
12/11/2015	21:45:59	2	0.0	8.36	375.7	0	
12/11/2015	21:46:49	2	0.0	8.36	375.7	0	
12/11/2015	21:47:39	2	0.0	8.36	375.7	0	
12/11/2015	21:48:29	2	0.0	8.36	375.7	0	
12/11/2015	21:49:19	2	0.0	8.36	375.7	0	
12/11/2015	21:50:59	2	0.0	8.36	375.7	0	
12/11/2015	21:51:49	1	0.0	8.36	375.7	0	
12/11/2015	21:52:39	2	0.0	8.36	375.7	0	
12/11/2015	21:53:29	2	0.0	8.36	375.7	0	

Post Job Summary

Average Pump Rates, bbl/min				Volume of Fluid Injected, bbl							
Slurry	N2	Mud	Maximum Rate	Total Slurry 703.0	Mud	Spacer 82.0	N2				
Treating Pressure Summary, psi				Breakdown Fluid							
Maximum	Final 0	Average	Bump Plug to 2500	Breakdown	Type	Volume bbl	Density lb/gal				
Avg. N2 Percent %	Designed Slurry Volume 684.0 bbl	Displacement 363.0 bbl	Mix Water Temp 62 degF	Cement Circulated to Surface?		Volume 37.0 bbl					
				Washed Thru Perfs		To ft					
Customer or Authorized Representative Merle			Schlumberger Supervisor Matlock/Terry			Circulation Lost	Job Completed				
						-	-				