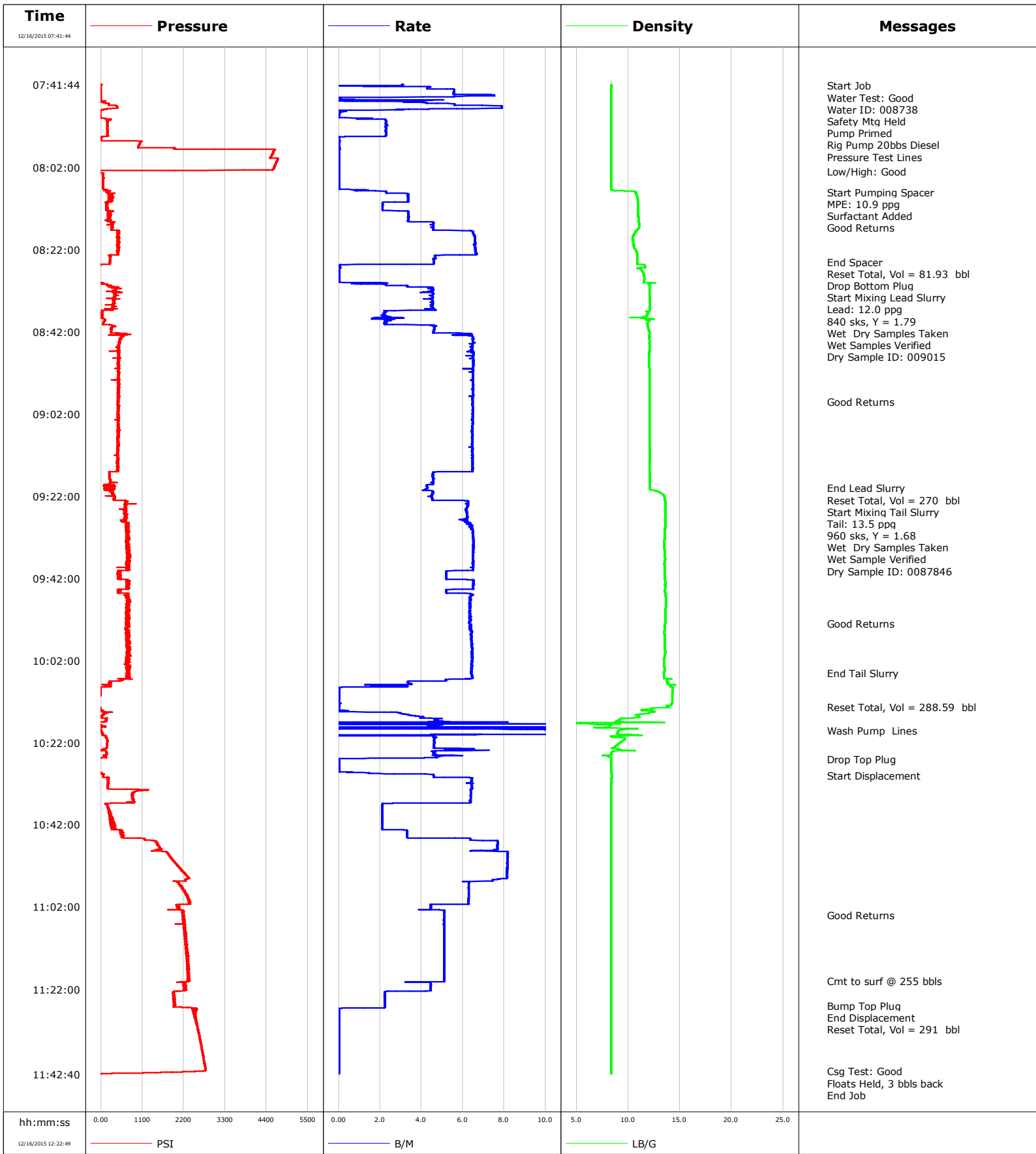


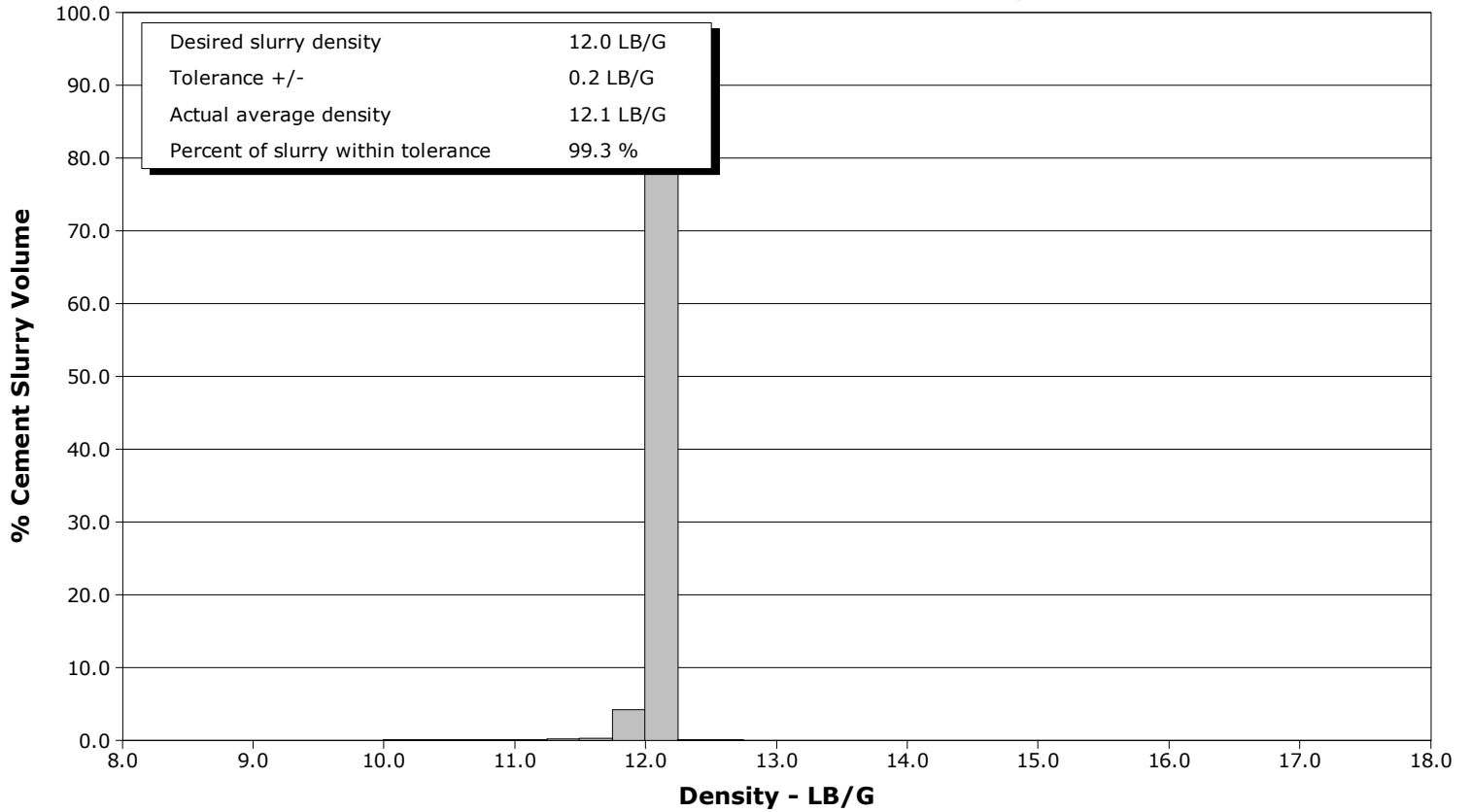
<b>Well</b>	Cook 2N-16HZ	<b>Client</b>	Anadarko
<b>Field</b>	Wattenberg	<b>SIR No.</b>	CWJN-01567
<b>Engineer</b>	Matlock/Baird	<b>Job Type</b>	Production
<b>Country</b>	United States	<b>Job Date</b>	12-16-2015



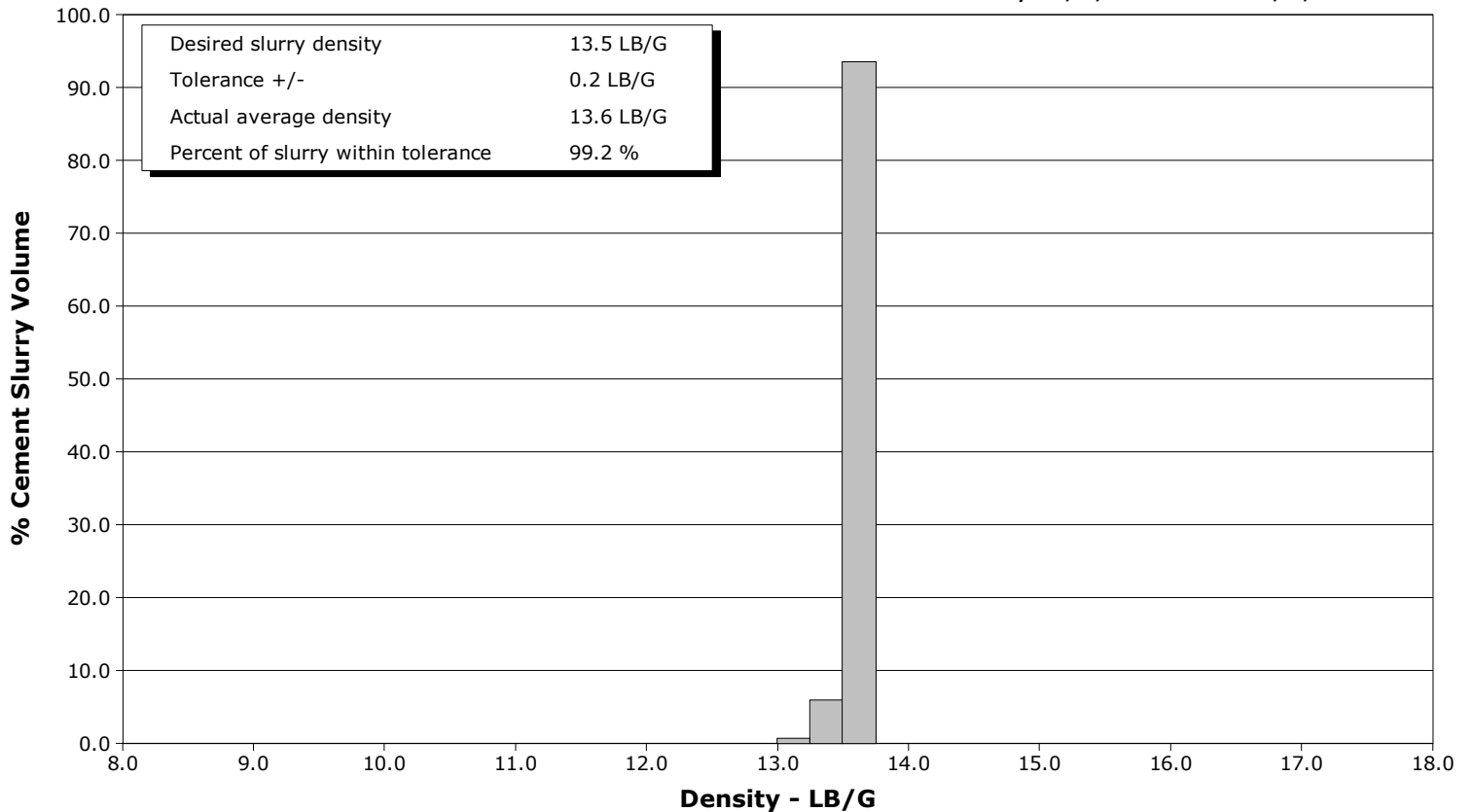
**Well** Cook 2N-16HZ  
**Field** Wattenberg  
**Engineer** Matlock/Baird  
**Country** United States

**Client** Anadarko  
**SIR No.** CWJN-01567  
**Job Type** Production  
**Job Date** 12-16-2015

**Lead Slurry - 12/16/2015 08:31:00 to 12/16/2015 09:20:00**



**Tail Slurry - 12/16/2015 09:21:00 to 12/16/2015 10:05:00**



# Cementing Service Report

						Customer		Job Number		
						Anadarko		CWJN-01567		
Well			Location (legal)			Schlumberger Location			Job Start	
Cook 2N-16HZ						Cheyenne			Dec/15/2015	
Field		Formation Name/Type		Deviation	Bit Size		Well MD		Well TVD	
Wattenberg				deg	8.5 in		12669.0 ft		7079.0 ft	
County		State/Province		BHP	BHST		BHCT		Pore Press. Gradient	
Weld		CO		psi	230 degF		225 degF		lb/gal	
Well Master		API/UWI								
0631659621		05123421450000								
Rig Name	Drilled For		Service Via		Casing/Liner					
H&P 307	Oil		Land		Depth, ft	Size, in	Weight, lb/ft	Grade	Thread	
Offshore Zone	Well Class		Well Type		12661.0	5.5	17.0	P-110		
	New		Development		0.0	0.0	0.0			
Drilling Fluid Type		Max. Density	Plastic Viscosity		Tubing/Drill Pipe					
		lb/gal	cP		T/D	Depth, ft	Size, in	Weight, lb/ft	Grade	Thread
Service Line	Job Type									
Cementing	Production									
Max. Allowed Tub. Press	Max. Allowed Ann. Press		WH Connection		Perforations/Open Hole					
psi	psi		Double Cement head		Top, ft	Bottom, ft	shot/ft	No. of Shots	Total Interval	
<b>Service Instructions</b> 9 5/8" 36# Previous Casing: 1,914' 8 1/2" to TD // OH Excess: 4% Top of Lead Cement: 0' Top of Tail Cement: 6,000' TD: 12,674' (7079')					ft	ft			ft	
					ft	ft			Diameter	
					ft	ft			in	
Treat Down		Displacement		Packer Type		Packer Depth				
Casing		291.6 bbl				ft				
Tubing Vol.		Casing Vol.		Annular Vol.		Openhole Vol.				
bbl		bbl		bbl		bbl				
Casing/Tubing Secured		1 Hole Vol. Circulated prior to Cement		Casing Tools			Squeeze Job			
<input checked="" type="checkbox"/>		<input checked="" type="checkbox"/>								
Lift Pressure			Shoe Type			Squeeze Type				
psi			Float							
Pipe Rotated		Pipe Reciprocated		Shoe Depth			Tool Type			
<input type="checkbox"/>		<input type="checkbox"/>		12661.0 ft						
No. Centralizers		Top Plugs	Bottom Plugs		Stage Tool Type			Tool Depth		
		1	1					ft		
Cement Head Type				Stage Tool Depth			Tail Pipe Size			
Double				ft			in			
Job Scheduled For		Arrived on Location		Leave Location		Collar Type		Tail Pipe Depth		
Dec/15/2015 23:30		Dec/15/2015 23:30		Dec/16/2015 12:30		Float		ft		
						Collar Depth		Sqz. Total Vol.		
						12568.0 ft		bbl		
Date	Time 24-hr clock	Treating Pressure PSI	Flow Rate B/M	Density LB/G	Volume BBL	Solid Fraction NULL	Message			
12/16/2015	07:41:44	45	3.1	8.37	0.0	0				
12/16/2015	07:42:00	-1	2.7	8.37	0.8	0	Start Job			
12/16/2015	07:42:34	-3	4.3	8.37	2.3	0				
12/16/2015	07:43:00	-4	5.6	8.37	4.3	0	Water Test: Good			
12/16/2015	07:43:24	-6	5.6	8.37	6.6	0				
12/16/2015	07:44:00	-6	5.6	8.37	9.9	0	Water ID: 008738			
12/16/2015	07:44:14	-7	7.1	8.37	11.2	0				
12/16/2015	07:45:00	-8	0.0	8.37	15.6	0	Safety Mtg Held			
12/16/2015	07:45:04	-8	0.0	8.37	15.6	0				
12/16/2015	07:45:54	21	1.9	8.36	16.5	0				
12/16/2015	07:46:44	202	5.6	8.36	20.2	0				
12/16/2015	07:47:34	432	7.9	8.38	26.4	0				
12/16/2015	07:48:03	10	0.3	8.37	0.0	0	Rig Pump 20bbs Diesel			
12/16/2015	07:48:24	-19	0.2	8.36	0.1	0				
12/16/2015	07:49:14	-23	0.0	8.36	0.1	0				
12/16/2015	07:50:00	67	1.6	8.36	0.2	0	Pressure Test Lines			
12/16/2015	07:50:04	100	1.4	8.36	0.3	0				
12/16/2015	07:50:54	173	2.3	8.36	2.1	0				
12/16/2015	07:51:44	162	2.4	8.37	4.0	0				
12/16/2015	07:52:34	163	2.3	8.36	5.9	0				
12/16/2015	07:53:24	175	2.3	8.36	7.8	0				

Well Cook 2N-16HZ			Field Wattenberg		Job Start Dec/15/2015	Customer Anadarko		Job Number CWJN-01567
Date	Time 24-hr clock	Treating Pressure PSI	Flow Rate B/M	Density LB/G	Volume BBL	Solid Fraction NULL	Message	
12/16/2015	07:55:04	2	0.0	8.36	10.2	0		
12/16/2015	07:55:54	1042	0.0	8.36	10.2	0		
12/16/2015	07:56:44	1002	0.0	8.36	10.2	0		
12/16/2015	07:57:34	3818	0.1	8.36	10.2	0		
12/16/2015	07:58:24	4572	0.0	8.35	10.2	0		
12/16/2015	07:59:14	4523	0.0	8.36	10.2	0		
12/16/2015	08:00:04	4691	0.0	8.36	10.2	0		
12/16/2015	08:00:54	4649	0.0	8.36	10.2	0		
12/16/2015	08:01:44	4611	0.0	8.36	10.2	0		
12/16/2015	08:02:34	4558	0.0	8.36	10.2	0		
12/16/2015	08:03:00	-54	0.0	8.36	10.2	0		Low/High: Good
12/16/2015	08:03:24	64	0.0	8.36	10.2	0		
12/16/2015	08:04:14	60	0.0	8.36	0.0	0		
12/16/2015	08:05:04	57	0.0	8.36	0.0	0		
12/16/2015	08:05:54	59	0.0	8.36	0.0	0		
12/16/2015	08:06:44	54	0.0	8.36	0.0	0		
12/16/2015	08:07:34	84	0.7	8.58	0.3	1		
12/16/2015	08:08:00	144	2.3	10.75	1.1	2		Start Pumping Spacer
12/16/2015	08:08:24	240	3.3	10.75	2.1	5		
12/16/2015	08:09:00	294	3.3	10.86	4.1	9		MPE: 10.9 ppg
12/16/2015	08:09:14	326	3.3	10.89	4.9	10		
12/16/2015	08:10:00	233	3.4	10.96	7.5	13		Surfactant Added
12/16/2015	08:10:04	203	3.3	10.96	7.7	14		
12/16/2015	08:10:54	142	2.1	10.98	9.9	16		
12/16/2015	08:11:00	146	2.1	10.97	10.1	16		Good Returns
12/16/2015	08:11:44	167	2.1	10.96	11.7	17		
12/16/2015	08:12:34	195	3.3	10.94	13.5	18		
12/16/2015	08:13:24	178	3.4	10.97	16.3	19		
12/16/2015	08:14:14	205	3.4	10.99	19.1	20		
12/16/2015	08:15:04	213	3.3	11.02	21.9	21		
12/16/2015	08:15:54	285	4.4	11.03	25.5	21		
12/16/2015	08:16:44	289	4.6	11.03	29.3	22		
12/16/2015	08:17:34	459	6.5	10.76	33.6	25		
12/16/2015	08:18:24	437	6.5	10.53	39.0	30		
12/16/2015	08:19:14	451	6.6	10.43	44.5	34		
12/16/2015	08:20:04	489	6.6	10.49	49.9	36		
12/16/2015	08:20:54	419	6.5	10.52	55.4	36		
12/16/2015	08:21:44	475	6.6	10.63	60.9	36		
12/16/2015	08:22:34	431	6.6	10.82	66.4	33		
12/16/2015	08:23:24	205	4.6	10.87	71.8	29		
12/16/2015	08:24:14	242	4.6	10.88	75.7	29		
12/16/2015	08:25:00	240	4.6	10.88	79.2	29		End Spacer
12/16/2015	08:25:04	233	4.6	10.88	79.5	29		
12/16/2015	08:25:52	-29	0.1	11.61	81.9	0		Reset Total, Vol = 81.93 bbl
12/16/2015	08:25:54	-30	0.1	11.62	0.0	0		
12/16/2015	08:26:44	-36	0.0	11.20	0.0	0		
12/16/2015	08:27:34	-40	0.0	11.44	0.1	0		
12/16/2015	08:28:00	-38	0.0	11.51	0.1	0		Drop Bottom Plug
12/16/2015	08:28:24	-41	0.0	11.55	0.1	0		
12/16/2015	08:29:14	-39	0.0	11.58	0.1	0		
12/16/2015	08:30:04	26	2.3	12.58	0.2	2		
12/16/2015	08:30:54	233	3.3	12.08	2.0	10		
12/16/2015	08:31:00	198	3.3	12.08	2.3	11		Start Mixing Lead Slurry
12/16/2015	08:31:44	372	4.6	12.06	5.5	16		

Well Cook 2N-16HZ			Field Wattenberg		Job Start Dec/15/2015	Customer Anadarko		Job Number CWJN-01567
Date	Time 24-hr clock	Treating Pressure PSI	Flow Rate B/M	Density LB/G	Volume BBL	Solid Fraction NULL	Message	
12/16/2015	08:33:24	366	4.5	12.07	13.0	22		
12/16/2015	08:34:00	375	4.3	12.09	15.7	23	Lead: 12.0 ppg	
12/16/2015	08:34:14	369	4.5	12.09	16.7	23		
12/16/2015	08:35:00	344	4.6	12.11	20.2	24	840 sks, Y = 1.79	
12/16/2015	08:35:04	310	4.5	12.11	20.5	24		
12/16/2015	08:35:54	335	4.5	12.11	24.3	25		
12/16/2015	08:36:00	329	4.6	12.11	24.7	25	Wet Dry Samples Taken	
12/16/2015	08:36:44	266	4.7	12.05	28.1	24		
12/16/2015	08:37:00	31	2.3	11.83	28.8	22	Wet Samples Verified	
12/16/2015	08:37:34	30	2.2	11.85	30.1	1		
12/16/2015	08:38:00	44	2.2	11.82	31.0	0	Dry Sample ID: 009015	
12/16/2015	08:38:24	31	2.5	11.33	32.0	0		
12/16/2015	08:39:14	113	2.4	11.94	33.9	21		
12/16/2015	08:40:04	53	2.2	11.86	35.8	21		
12/16/2015	08:40:54	319	4.6	11.92	39.1	22		
12/16/2015	08:41:44	276	4.6	12.02	42.9	24		
12/16/2015	08:42:34	582	6.4	12.04	47.2	25		
12/16/2015	08:43:24	541	6.5	12.03	52.4	25		
12/16/2015	08:44:14	496	6.5	12.05	57.8	26		
12/16/2015	08:45:04	486	6.5	12.08	63.2	26		
12/16/2015	08:45:54	474	6.4	12.07	68.6	26		
12/16/2015	08:46:44	464	6.4	12.05	73.9	26		
12/16/2015	08:47:34	475	6.5	12.03	79.3	26		
12/16/2015	08:48:24	328	6.4	12.03	84.7	26		
12/16/2015	08:49:14	494	6.5	12.03	90.1	26		
12/16/2015	08:50:04	468	6.5	12.03	95.5	26		
12/16/2015	08:50:54	445	6.5	12.04	101.0	26		
12/16/2015	08:51:44	496	6.5	12.05	106.3	26		
12/16/2015	08:52:34	451	6.5	12.05	111.7	26		
12/16/2015	08:53:24	470	6.5	12.05	117.1	26		
12/16/2015	08:54:14	449	6.5	12.06	122.5	26		
12/16/2015	08:55:04	473	6.5	12.06	128.0	26		
12/16/2015	08:55:54	460	6.5	12.05	133.4	26		
12/16/2015	08:56:44	480	6.5	12.05	138.8	26		
12/16/2015	08:57:34	474	6.5	12.05	144.2	26		
12/16/2015	08:58:24	442	6.5	12.06	149.6	26		
12/16/2015	08:59:00	464	6.5	12.06	153.4	26	Good Returns	
12/16/2015	08:59:14	471	6.5	12.06	155.0	26		
12/16/2015	09:00:04	448	6.5	12.05	160.3	26		
12/16/2015	09:00:54	457	6.5	12.05	165.7	26		
12/16/2015	09:01:44	458	6.5	12.06	171.1	26		
12/16/2015	09:02:34	442	6.5	12.05	176.5	26		
12/16/2015	09:03:24	470	6.5	12.05	181.9	26		
12/16/2015	09:04:14	457	6.5	12.05	187.3	26		
12/16/2015	09:05:04	463	6.5	12.07	192.7	25		
12/16/2015	09:05:54	459	6.5	12.06	198.1	25		
12/16/2015	09:06:44	465	6.5	12.05	203.4	25		
12/16/2015	09:07:34	442	6.5	12.05	208.8	25		
12/16/2015	09:08:24	422	6.5	12.04	214.2	25		
12/16/2015	09:09:14	461	6.5	12.07	219.6	25		
12/16/2015	09:10:04	444	6.4	12.07	224.9	25		
12/16/2015	09:10:54	458	6.5	12.09	230.3	25		
12/16/2015	09:11:44	421	6.5	12.08	235.7	25		
12/16/2015	09:12:34	474	6.5	12.09	241.1	25		

Well Cook 2N-16HZ			Field Wattenberg		Job Start Dec/15/2015	Customer Anadarko		Job Number CWJN-01567
Date	Time 24-hr clock	Treating Pressure PSI	Flow Rate B/M	Density LB/G	Volume BBL	Solid Fraction NULL	Message	
12/16/2015	09:14:14	455	6.5	12.06	251.8	25		
12/16/2015	09:15:04	443	6.5	12.06	257.2	25		
12/16/2015	09:15:54	440	6.5	12.08	262.6	26		
12/16/2015	09:16:44	216	4.6	12.09	266.8	26		
12/16/2015	09:17:34	233	4.6	12.08	270.6	26		
12/16/2015	09:18:24	245	4.6	12.09	274.4	26		
12/16/2015	09:19:14	364	4.4	12.09	278.2	26		
12/16/2015	09:20:00	262	4.3	12.10	281.4	26		End Lead Slurry
12/16/2015	09:20:04	93	4.3	12.10	281.7	26		
12/16/2015	09:20:30	119	4.1	12.30	283.6	31		Reset Total, Vol = 270 bbl
12/16/2015	09:20:54	265	4.6	12.91	285.3	37		
12/16/2015	09:21:00	322	4.6	13.00	285.8	37		Start Mixing Tail Slurry
12/16/2015	09:21:44	359	4.5	13.42	1.1	39		
12/16/2015	09:22:34	346	4.5	13.55	4.8	38		
12/16/2015	09:23:24	675	6.2	13.60	9.1	36		
12/16/2015	09:24:00	661	6.2	13.58	12.9	36		Tail: 13.5 ppg
12/16/2015	09:24:14	627	6.2	13.58	14.3	35		
12/16/2015	09:25:00	630	6.2	13.58	19.1	35		960 sks, Y = 1.68
12/16/2015	09:25:04	652	6.2	13.57	19.5	35		
12/16/2015	09:25:54	644	6.2	13.57	24.6	35		
12/16/2015	09:26:00	638	6.2	13.57	25.3	35		Wet Dry Samples Taken
12/16/2015	09:26:44	694	6.2	13.57	29.8	35		
12/16/2015	09:27:00	630	6.2	13.57	31.5	35		Wet Sample Verified
12/16/2015	09:27:34	661	6.2	13.57	35.0	35		
12/16/2015	09:28:00	623	6.2	13.57	37.6	34		Dry Sample ID: 0087846
12/16/2015	09:28:24	697	6.2	13.58	40.1	35		
12/16/2015	09:29:14	686	6.4	13.57	45.4	35		
12/16/2015	09:30:04	683	6.4	13.56	50.7	35		
12/16/2015	09:30:54	731	6.5	13.55	56.1	35		
12/16/2015	09:31:44	673	6.5	13.54	61.5	36		
12/16/2015	09:32:34	673	6.5	13.52	66.9	36		
12/16/2015	09:33:24	725	6.5	13.51	72.3	35		
12/16/2015	09:34:14	688	6.5	13.50	77.8	36		
12/16/2015	09:35:04	699	6.5	13.52	83.2	36		
12/16/2015	09:35:54	689	6.5	13.54	88.6	36		
12/16/2015	09:36:44	708	6.5	13.56	94.0	37		
12/16/2015	09:37:34	726	6.5	13.56	99.4	36		
12/16/2015	09:38:24	717	6.5	13.51	104.8	36		
12/16/2015	09:39:14	675	6.5	13.53	110.3	36		
12/16/2015	09:40:04	730	6.5	13.55	115.7	36		
12/16/2015	09:40:54	469	5.2	13.53	120.1	36		
12/16/2015	09:41:44	452	5.2	13.55	124.5	36		
12/16/2015	09:42:34	764	6.5	13.58	129.1	36		
12/16/2015	09:43:24	715	6.5	13.57	134.5	37		
12/16/2015	09:44:14	722	6.5	13.58	139.9	36		
12/16/2015	09:45:04	480	5.2	13.56	144.9	36		
12/16/2015	09:45:54	731	6.4	13.62	149.5	34		
12/16/2015	09:46:44	723	6.3	13.65	154.8	34		
12/16/2015	09:47:34	785	6.3	13.66	160.1	34		
12/16/2015	09:48:24	730	6.4	13.64	165.4	34		
12/16/2015	09:49:14	696	6.3	13.61	170.7	35		
12/16/2015	09:50:04	700	6.3	13.60	176.0	34		
12/16/2015	09:50:54	661	6.3	13.59	181.2	34		
12/16/2015	09:51:44	726	6.3	13.59	186.5	34		

Well Cook 2N-16HZ			Field Wattenberg		Job Start Dec/15/2015	Customer Anadarko		Job Number CWJN-01567
Date	Time 24-hr clock	Treating Pressure PSI	Flow Rate B/M	Density LB/G	Volume BBL	Solid Fraction NULL	Message	
12/16/2015	09:53:00	742	6.3	13.57	194.5	34	Good Returns	
12/16/2015	09:53:24	760	6.4	13.55	197.1	34		
12/16/2015	09:54:14	642	6.3	13.53	202.4	34		
12/16/2015	09:55:04	692	6.4	13.51	207.7	33		
12/16/2015	09:55:54	681	6.4	13.53	213.0	34		
12/16/2015	09:56:44	663	6.4	13.55	218.4	35		
12/16/2015	09:57:34	685	6.4	13.56	223.7	35		
12/16/2015	09:58:24	719	6.4	13.56	229.1	35		
12/16/2015	09:59:14	714	6.5	13.56	234.5	35		
12/16/2015	10:00:04	706	6.5	13.57	239.8	36		
12/16/2015	10:00:54	691	6.4	13.56	245.2	35		
12/16/2015	10:01:44	681	6.4	13.48	250.6	35		
12/16/2015	10:02:34	703	6.4	13.50	256.0	34		
12/16/2015	10:03:24	671	6.5	13.51	261.3	35		
12/16/2015	10:04:14	722	6.4	13.52	266.7	35		
12/16/2015	10:05:00	746	6.4	13.47	271.6	35	End Tail Slurry	
12/16/2015	10:05:04	689	6.4	13.47	272.0	35		
12/16/2015	10:05:54	728	6.5	13.43	277.4	35		
12/16/2015	10:06:44	605	5.2	13.73	282.5	25		
12/16/2015	10:07:34	201	3.5	13.80	285.9	35		
12/16/2015	10:08:24	235	3.3	14.13	288.2	68		
12/16/2015	10:09:14	-23	0.0	14.31	288.5	0		
12/16/2015	10:10:04	-23	0.0	14.28	288.5	0		
12/16/2015	10:10:54	-41	0.0	14.27	288.5	0		
12/16/2015	10:11:44	-43	0.0	14.26	288.6	0		
12/16/2015	10:12:34	-45	0.0	14.16	288.6	0		
12/16/2015	10:13:23	-33	0.0	13.88	0.0	0	Reset Total, Vol = 288.59 bbl	
12/16/2015	10:13:24	-28	0.0	13.88	0.0	0		
12/16/2015	10:14:14	46	0.4	12.09	0.0	24		
12/16/2015	10:15:04	78	3.1	11.29	1.6	35		
12/16/2015	10:15:54	2	4.0	10.83	4.7	43		
12/16/2015	10:16:44	130	5.0	9.10	8.5	18		
12/16/2015	10:17:34	-63	1.0	7.19	10.6	18		
12/16/2015	10:18:24	-57	0.0	6.98	14.0	6		
12/16/2015	10:19:00	-21	10.2	9.15	18.2	29	Wash Pump Lines	
12/16/2015	10:19:14	3	10.5	9.01	20.6	34		
12/16/2015	10:20:04	48	6.9	10.31	29.0	26		
12/16/2015	10:20:54	138	4.6	9.68	31.9	71		
12/16/2015	10:21:44	173	4.6	9.40	35.7	71		
12/16/2015	10:22:34	162	4.6	8.97	39.5	71		
12/16/2015	10:23:24	144	4.6	8.42	43.4	71		
12/16/2015	10:24:14	144	4.7	8.47	47.9	71		
12/16/2015	10:25:04	66	4.5	8.37	51.7	71		
12/16/2015	10:25:54	-66	0.3	8.38	55.3	0		
12/16/2015	10:26:00	-56	0.0	8.36	55.3	0	Drop Top Plug	
12/16/2015	10:26:44	-46	0.0	8.36	0.0	0		
12/16/2015	10:27:34	-44	0.0	8.36	0.0	0		
12/16/2015	10:28:24	-43	0.0	8.36	0.0	0		
12/16/2015	10:29:14	-39	0.5	8.36	0.1	0		
12/16/2015	10:30:00	61	4.6	8.43	2.2	0	Start Displacement	
12/16/2015	10:30:04	61	4.6	8.42	2.5	0		
12/16/2015	10:30:54	164	6.4	8.39	7.1	0		
12/16/2015	10:31:44	201	6.4	8.40	12.5	0		
12/16/2015	10:32:34	180	6.5	8.36	17.8	0		

Well Cook 2N-16HZ			Field Wattenberg		Job Start Dec/15/2015	Customer Anadarko		Job Number CWJN-01567
Date	Time 24-hr clock	Treating Pressure PSI	Flow Rate B/M	Density LB/G	Volume BBL	Solid Fraction NULL	Message	
12/16/2015	10:34:14	833	6.4	8.39	28.5	0		
12/16/2015	10:35:04	833	6.4	8.37	33.8	0		
12/16/2015	10:35:54	856	6.4	8.37	39.1	0		
12/16/2015	10:36:44	495	4.1	8.37	44.4	0		
12/16/2015	10:37:34	185	2.1	8.37	46.2	0		
12/16/2015	10:38:24	225	2.1	8.37	48.0	0		
12/16/2015	10:39:14	251	2.1	8.37	49.7	0		
12/16/2015	10:40:04	224	2.1	8.37	51.5	0		
12/16/2015	10:40:54	330	2.1	8.37	53.2	0		
12/16/2015	10:41:44	361	2.1	8.36	55.0	0		
12/16/2015	10:42:34	359	2.1	8.36	56.7	0		
12/16/2015	10:43:24	569	3.3	8.36	58.6	0		
12/16/2015	10:44:14	571	3.3	8.36	61.4	0		
12/16/2015	10:45:04	589	3.3	8.36	64.1	0		
12/16/2015	10:45:54	1415	7.7	8.37	68.9	0		
12/16/2015	10:46:44	1499	7.7	8.35	75.3	0		
12/16/2015	10:47:34	1565	7.7	8.36	81.7	0		
12/16/2015	10:48:24	1489	6.4	8.36	88.0	0		
12/16/2015	10:49:14	1809	8.2	8.36	94.7	0		
12/16/2015	10:50:04	1859	8.1	8.36	101.5	0		
12/16/2015	10:50:54	1930	8.2	8.36	108.3	0		
12/16/2015	10:51:44	2022	8.1	8.36	115.1	0		
12/16/2015	10:52:34	2086	8.1	8.36	121.9	0		
12/16/2015	10:53:24	2183	8.1	8.36	128.6	0		
12/16/2015	10:54:14	2254	8.1	8.36	135.4	0		
12/16/2015	10:55:04	2349	8.1	8.36	142.2	0		
12/16/2015	10:55:54	2014	6.3	8.36	148.4	0		
12/16/2015	10:56:44	2108	6.3	8.36	153.6	0		
12/16/2015	10:57:34	2160	6.3	8.36	158.8	0		
12/16/2015	10:58:24	2248	6.3	8.35	164.1	0		
12/16/2015	10:59:14	2267	6.3	8.35	169.3	0		
12/16/2015	11:00:04	2336	6.3	8.35	174.5	0		
12/16/2015	11:00:54	2325	6.3	8.35	179.7	0		
12/16/2015	11:01:44	2052	4.4	8.35	184.3	0		
12/16/2015	11:02:34	2029	4.4	8.35	188.0	0		
12/16/2015	11:03:24	2152	5.1	8.35	192.1	0		
12/16/2015	11:04:00	2164	5.1	8.35	195.2	0	Good Returns	
12/16/2015	11:04:14	2172	5.1	8.36	196.4	0		
12/16/2015	11:05:04	2186	5.1	8.35	200.6	0		
12/16/2015	11:05:54	2214	5.1	8.35	204.9	0		
12/16/2015	11:06:44	2220	5.1	8.35	209.1	0		
12/16/2015	11:07:34	2252	5.1	8.35	213.4	0		
12/16/2015	11:08:24	2253	5.1	8.35	217.6	0		
12/16/2015	11:09:14	2271	5.1	8.35	221.9	0		
12/16/2015	11:10:04	2251	5.1	8.35	226.1	0		
12/16/2015	11:10:54	2258	5.1	8.35	230.4	0		
12/16/2015	11:11:44	2268	5.1	8.35	234.6	0		
12/16/2015	11:12:34	2271	5.1	8.36	238.9	0		
12/16/2015	11:13:24	2263	5.1	8.36	243.1	0		
12/16/2015	11:14:14	2295	5.1	8.35	247.4	0		
12/16/2015	11:15:04	2294	5.1	8.35	251.6	0		
12/16/2015	11:15:54	2280	5.1	8.35	255.9	0		
12/16/2015	11:16:44	2311	5.1	8.35	260.1	0		
12/16/2015	11:17:34	2311	5.1	8.35	264.4	0		

Well Cook 2N-16HZ			Field Wattenberg		Job Start Dec/15/2015	Customer Anadarko		Job Number CWJN-01567
Date	Time 24-hr clock	Treating Pressure PSI	Flow Rate B/M	Density LB/G	Volume BBL	Solid Fraction NULL	Message	
12/16/2015	11:19:14	2342	5.1	8.35	272.9	0		
12/16/2015	11:20:00	2351	5.1	8.35	276.8	0	Cmt to surf @ 255 bbls	
12/16/2015	11:20:04	2348	5.1	8.35	277.1	0		
12/16/2015	11:20:54	2212	4.4	8.35	280.8	0		
12/16/2015	11:21:44	2274	4.4	8.36	284.5	0		
12/16/2015	11:22:34	1955	2.4	8.35	288.1	0		
12/16/2015	11:23:24	1938	2.2	8.35	290.0	0		
12/16/2015	11:24:14	1937	2.2	8.36	291.9	0		
12/16/2015	11:25:04	1971	2.2	8.35	293.7	0		
12/16/2015	11:25:54	1931	2.2	8.35	295.6	0		
12/16/2015	11:26:00	1963	2.2	8.35	295.8	0	Bump Top Plug	
12/16/2015	11:26:05	1952	2.2	8.36	296.0	0	End Displacement	
12/16/2015	11:26:30	2287	2.2	8.35	296.9	0	Reset Total, Vol = 291 bbl	
12/16/2015	11:26:44	2423	0.0	8.36	297.3	0		
12/16/2015	11:27:34	2492	0.0	8.36	297.3	0		
12/16/2015	11:28:24	2479	0.0	8.36	297.3	0		
12/16/2015	11:29:14	2524	0.0	8.36	297.3	0		
12/16/2015	11:30:04	2529	0.0	8.36	297.3	0		
12/16/2015	11:30:54	2548	0.0	8.36	297.3	0		
12/16/2015	11:31:44	2578	0.0	8.36	297.3	0		
12/16/2015	11:32:34	2592	0.0	8.36	297.3	0		
12/16/2015	11:33:24	2612	0.0	8.36	297.3	0		
12/16/2015	11:34:14	2632	0.0	8.36	297.3	0		
12/16/2015	11:35:04	2648	0.0	8.36	297.3	0		
12/16/2015	11:35:54	2666	0.0	8.36	297.3	0		
12/16/2015	11:36:44	2682	0.0	8.36	297.4	0		
12/16/2015	11:37:34	2699	0.0	8.36	297.4	0		
12/16/2015	11:38:24	2716	0.0	8.36	297.4	0		
12/16/2015	11:39:14	2732	0.0	8.36	297.4	0		
12/16/2015	11:40:04	2748	0.0	8.36	297.4	0		
12/16/2015	11:40:54	2764	0.0	8.36	297.4	0		
12/16/2015	11:41:44	2780	0.0	8.36	297.4	0		
12/16/2015	11:42:00	2689	0.0	8.36	297.4	0	Csg Test: Good	
12/16/2015	11:42:03	2496	0.0	8.36	297.4	0	Floats Held, 3 bbls back	
12/16/2015	11:42:04	2491	0.0	8.36	297.4	0	End Job	
12/16/2015	11:42:34	236	0.0	8.36	297.4	0		
12/16/2015	11:43:24	-52	0.0	8.36	297.4	0		
12/16/2015	11:44:14	-68	0.0	8.36	297.4	0		
12/16/2015	11:45:04	-66	0.0	8.36	297.4	0		

<b>Well</b> Cook 2N-16HZ	<b>Field</b> Wattenberg	<b>Job Start</b> Dec/15/2015	<b>Customer</b> Anadarko	<b>Job Number</b> CWJN-01567
-----------------------------	----------------------------	---------------------------------	-----------------------------	---------------------------------

### Post Job Summary

Average Pump Rates, bbl/min					Volume of Fluid Injected, bbl			
Slurry	N2	Mud	Maximum Rate		Total Slurry	Mud	Spacer 81.0	N2
Treating Pressure Summary, psi					Breakdown Fluid			
Maximum	Final 0	Average	Bump Plug to 2500	Breakdown	Type	Volume bbl	Density lb/gal	
Avg. N2 Percent %	Designed Slurry Volume 555.0 bbl	Displacement 291.0 bbl	Mix Water Temp 64 degF	Cement Circulated to Surface? <input checked="" type="checkbox"/>	Volume 36.0 bbl	Washed Thru Perfs <input type="checkbox"/>		
Customer or Authorized Representative Jeremy Wilde			Schlumberger Supervisor Matlock/Baird		Circulation Lost <input type="checkbox"/>	Job Completed <input checked="" type="checkbox"/>		
					-	-		