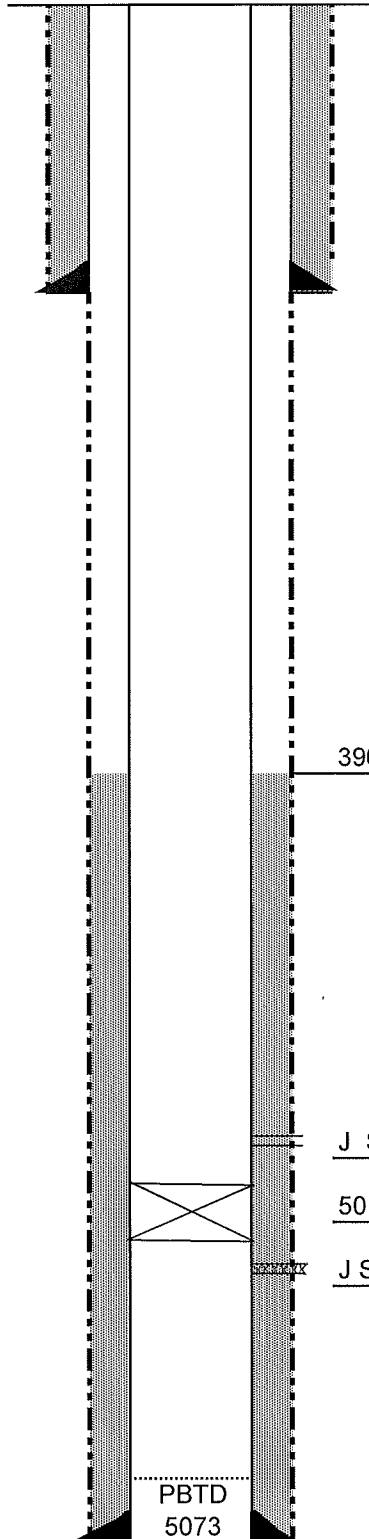


Current Wellbore Diagram

LEASE Segelke
SW SW Sec 30 , T 6N , R 54W
WELL NO. 1
Logan
API: 05- 075-05019
County, Colorado

PRODUCTION ZONE:

Dakota J



SURFACE CASING

8-5/8" Surface Casing @ 113 '
with 100 sacks
Top of Cement @ Circulated to Surface

3965' Top of Cement

J Sand 5002-06

5015' - Cement Retainer

J Sand 5020-26 (squeezed w/ 75 sacks)

PRODUCTION CASING

5-1/2" , 14 # Prod CSG @ 5,073 '
with 150 sacks
TOP OF CEMENT @ 3,965 '

TD: 5058