

BONANZA CREEK ENERGY INC.

WELD COUNTY, COLORADO (NAD 83)

NE NW SEC. 5 T4N R62W 6th P.M.

SEVENTY HOLES F-J-5HNB

ORIGINAL WELLBORE

11 November, 2015

Plan: PROPOSAL #3





Project: WELD COUNTY, COLORADO (NAD 83)
Site: NE NW SEC. 5 T4N R62W 6th P.M.
Well: SEVENTY HOLES F-J-5HNB
Wellbore: ORIGINAL WELLBORE
Design: PROPOSAL #3

ANNOTATIONS

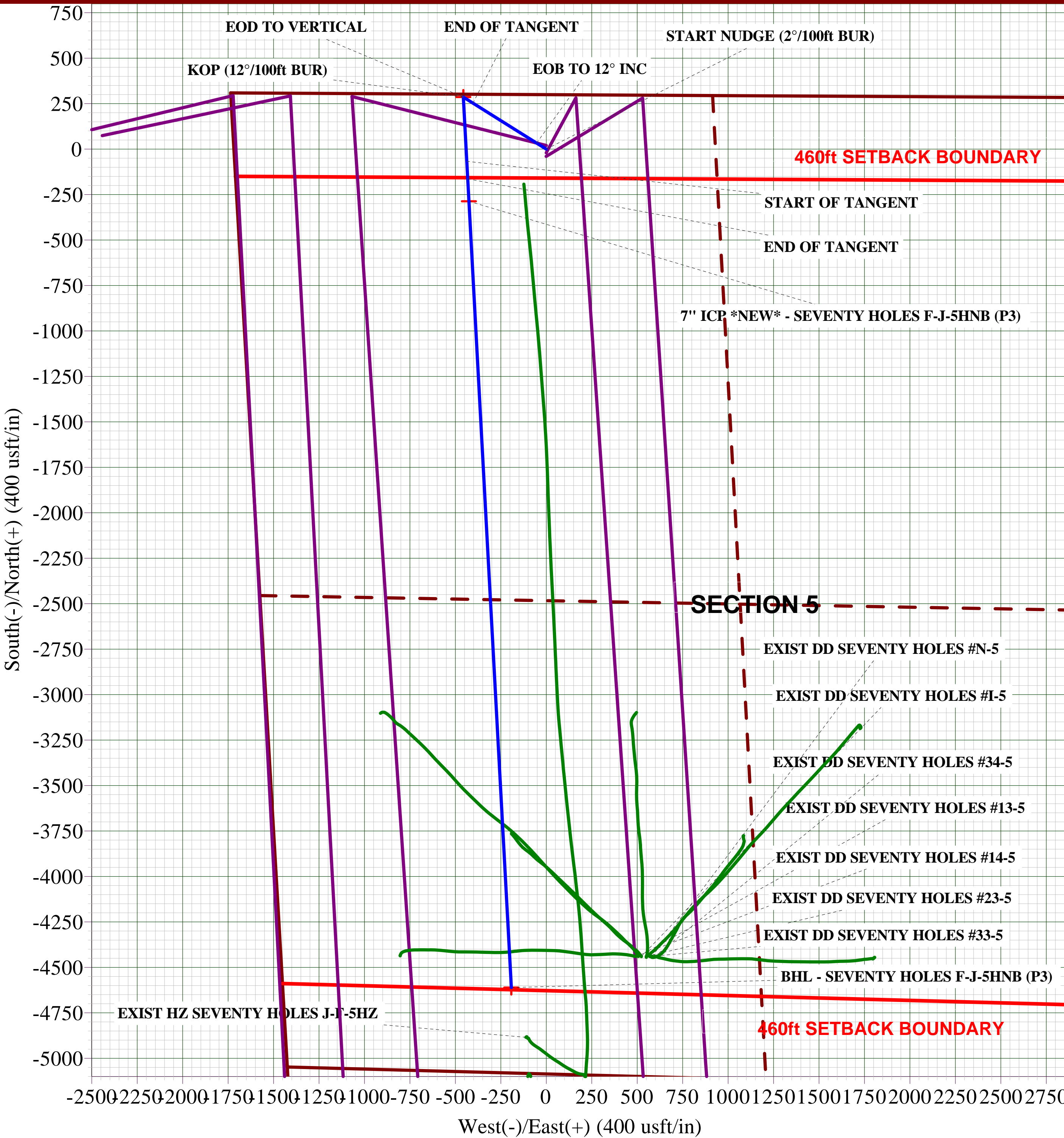
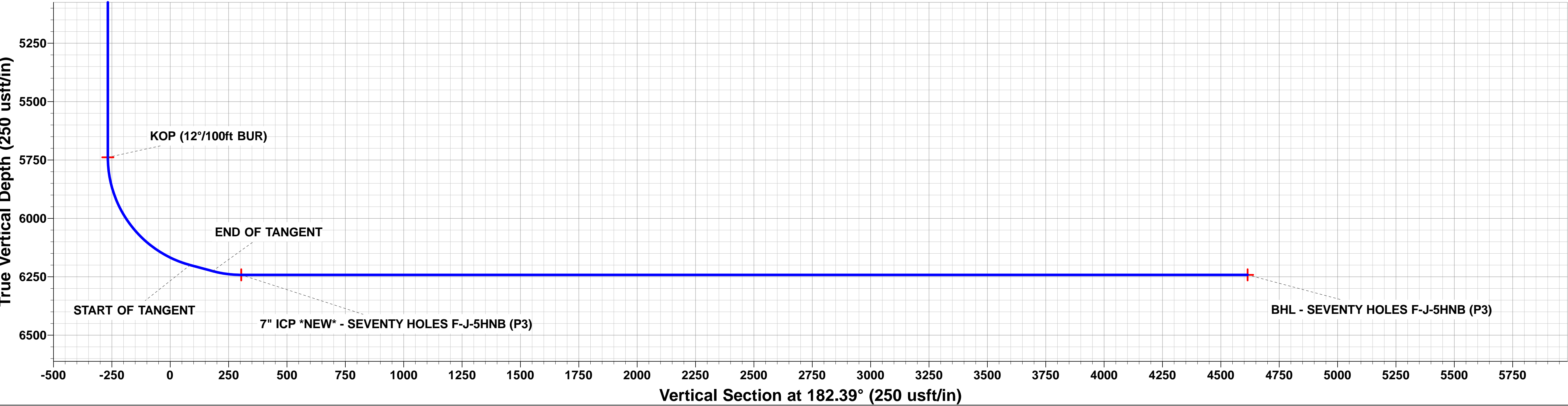
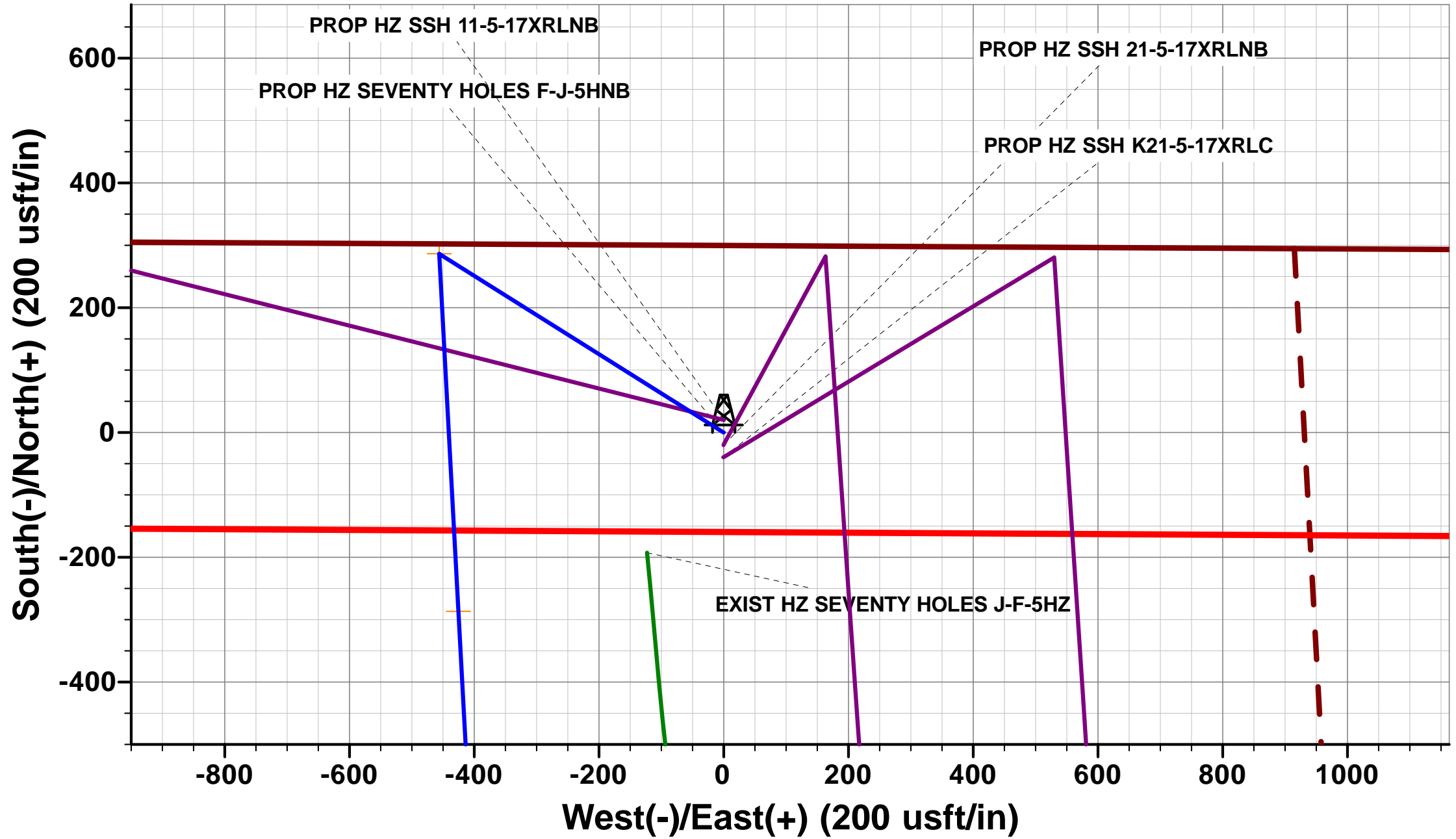
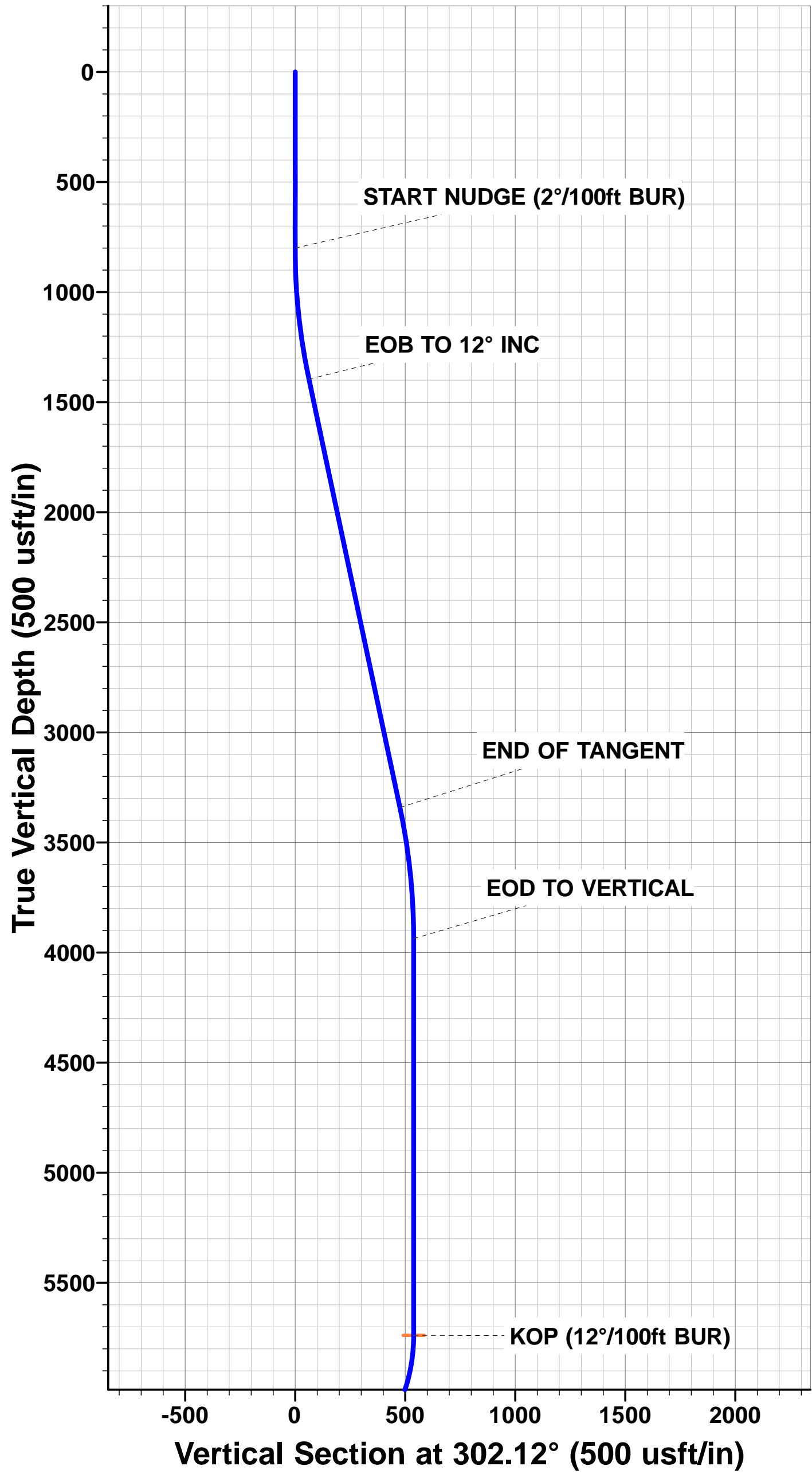
TVD	MD	Inc	Azi	+N/-S	+E/-W	VSect	Dep	Annotation
800.0	800.0	0.00	0.00	0.0	0.0	0.0	0.0	START NUDGE (2°/100ft BUR)
1395.5	1399.9	12.00	302.12	33.3	-53.0	-31.0	62.6	EOB TO 12° INC
3341.0	3388.9	12.00	302.12	253.1	-403.2	-236.1	476.1	END OF TANGENT
3936.6	3988.8	0.00	0.00	286.4	-456.2	-267.2	538.7	EOD TO VERTICAL
5738.6	5790.8	0.00	0.00	286.4	-456.2	-267.2	538.7	KOP (12°/100ft BUR)
6199.8	6415.8	75.00	176.91	-67.0	-437.1	85.1	892.5	START OF TANGENT
6225.7	6515.8	75.00	176.91	-163.4	-431.9	181.3	989.1	END OF TANGENT
6241.9	6640.8	90.00	176.91	-286.8	-425.3	304.3	1112.7	7" ICP *NEW* - SEVENTY HOLES F-J-5HNB
6241.9	10970.9	90.00	176.92	-4610.7	-192.1	4614.7	5442.8	BHL - SEVENTY HOLES F-J-5HNB

PROPOSED LOCAL COORDINATES:

SHL: 300ft FNL & 1715ft FWL Sec 5
7" ICP *NEW*: 589ft FNL & 1274ft FWL Sec 5
BHL: 470ft FSL & 1255ft FWL Sec 5

WELLBORE TARGET DETAILS (LAT/LONG)

Name	TVD	+N/-S	+E/-W	Latitude	Longitude
KOP - SEVENTY HOLES F-J-5HNB (P3)	5738.6	286.4	-456.2	40.348973	-104.355365
7" ICP *NEW* - SEVENTY HOLES F-J-5HNB (P3)	6241.9	-286.8	-425.3	40.347400	-104.355254
BHL - SEVENTY HOLES F-J-5HNB (P3)	6241.9	-4610.7	-192.1	40.335531	-104.354417



Database:	EDM 5000.1 Single User Db	Local Co-ordinate Reference:	Well SEVENTY HOLES F-J-5HNB
Company:	BONANZA CREEK ENERGY INC.	TVD Reference:	KB-EST @ 4561.9usft (Original Well Elev)
Project:	WELD COUNTY, COLORADO (NAD 83)	MD Reference:	KB-EST @ 4561.9usft (Original Well Elev)
Site:	NE NW SEC. 5 T4N R62W 6th P.M.	North Reference:	True
Well:	SEVENTY HOLES F-J-5HNB	Survey Calculation Method:	Minimum Curvature
Wellbore:	ORIGINAL WELLBORE		
Design:	PROPOSAL #3		

Project	WELD COUNTY, COLORADO (NAD 83)		
Map System:	US State Plane 1983	System Datum:	Mean Sea Level
Geo Datum:	North American Datum 1983		
Map Zone:	Colorado Northern Zone		Using geodetic scale factor

Site	NE NW SEC. 5 T4N R62W 6th P.M.		
Site Position:		Northing:	1,371,770.18 usft
From:	Lat/Long	Easting:	3,319,483.74 usft
Position Uncertainty:	0.0 usft	Slot Radius:	1.10000ft
		Latitude:	40.348242
		Longitude:	-104.353727
		Grid Convergence:	0.74 °

Well	SEVENTY HOLES F-J-5HNB		
Well Position	+N-S	-20.0 usft	Northing:
	+E-W	-0.3 usft	Easting:
Position Uncertainty		0.0 usft	Wellhead Elevation:
			Latitude:
			Longitude:
			Ground Level:

Wellbore	ORIGINAL WELLBORE				
Magnetics	Model Name	Sample Date	Declination (°)	Dip Angle (°)	Field Strength (nT)
	IGRF2015	10/11/2015	8.16	66.92	52,593

Design	PROPOSAL #3			
Audit Notes:				
Version:	Phase:	PROTOTYPE	Tie On Depth:	0.0
Vertical Section:	Depth From (TVD) (usft)	+N-S (usft)	+E-W (usft)	Direction (°)
	0.0	0.0	0.0	182.39

Plan Sections											
MD (usft)	Inc (°)	Azi (°)	Vertical Depth	SS (usft)	+N-S (usft)	+E-W (usft)	Dogleg Rate (°/100usf)	Build Rate (°/100usf)	Turn Rate (°/100usf)	TFO (°)	Target
0.0	0.00	0.00	0.0	-4,561.9	0.0	0.0	0.00	0.00	0.00	0.00	
800.0	0.00	0.00	800.0	-3,761.9	0.0	0.0	0.00	0.00	0.00	0.00	
1,399.9	12.00	302.12	1,395.5	-3,166.4	33.3	-53.0	2.00	2.00	0.00	302.12	
3,388.9	12.00	302.12	3,341.1	-1,220.8	253.1	-403.2	0.00	0.00	0.00	0.00	
3,988.8	0.00	0.00	3,936.6	-625.3	286.4	-456.2	2.00	-2.00	0.00	180.00	
5,790.8	0.00	0.00	5,738.6	1,176.7	286.4	-456.2	0.00	0.00	0.00	0.00	KOP - SEVENTY H
6,415.8	75.00	176.91	6,199.8	1,637.9	-67.0	-437.1	12.00	12.00	0.00	176.91	
6,515.8	75.00	176.91	6,225.7	1,663.8	-163.4	-431.9	0.00	0.00	0.00	0.00	
6,640.8	90.00	176.91	6,241.9	1,680.0	-286.8	-425.3	12.00	12.00	0.00	0.00	
10,970.9	90.00	176.92	6,241.9	1,680.0	-4,610.7	-192.1	0.00	0.00	0.00	79.07	BHL - SEVENTY H

Database:	EDM 5000.1 Single User Db	Local Co-ordinate Reference:	Well SEVENTY HOLES F-J-5HNB
Company:	BONANZA CREEK ENERGY INC.	TVD Reference:	KB-EST @ 4561.9usft (Original Well Elev)
Project:	WELD COUNTY, COLORADO (NAD 83)	MD Reference:	KB-EST @ 4561.9usft (Original Well Elev)
Site:	NE NW SEC. 5 T4N R62W 6th P.M.	North Reference:	True
Well:	SEVENTY HOLES F-J-5HNB	Survey Calculation Method:	Minimum Curvature
Wellbore:	ORIGINAL WELLBORE		
Design:	PROPOSAL #3		

Planned Survey

MD (usft)	Inc (°)	Azi (°)	TVD (usft)	SS (usft)	+N/-S (usft)	+E/-W (usft)	Vertical Section (usft)	Dogleg Rate (°/100usft)	Build Rate (°/100usft)	Turn Rate (°/100usft)
0.0	0.00	0.00	0.0	4,561.90	0.0	0.0	0.0	0.00	0.00	0.00
100.0	0.00	0.00	100.0	4,461.90	0.0	0.0	0.0	0.00	0.00	0.00
200.0	0.00	0.00	200.0	4,361.90	0.0	0.0	0.0	0.00	0.00	0.00
300.0	0.00	0.00	300.0	4,261.90	0.0	0.0	0.0	0.00	0.00	0.00
400.0	0.00	0.00	400.0	4,161.90	0.0	0.0	0.0	0.00	0.00	0.00
500.0	0.00	0.00	500.0	4,061.90	0.0	0.0	0.0	0.00	0.00	0.00
600.0	0.00	0.00	600.0	3,961.90	0.0	0.0	0.0	0.00	0.00	0.00
700.0	0.00	0.00	700.0	3,861.90	0.0	0.0	0.0	0.00	0.00	0.00
START NUDGE (2°/100ft BUR)										
800.0	0.00	0.00	800.0	3,761.90	0.0	0.0	0.0	0.00	0.00	0.00
900.0	2.00	302.12	900.0	3,661.92	0.9	-1.5	-0.9	2.00	2.00	0.00
1,000.0	4.00	302.12	999.8	3,562.06	3.7	-5.9	-3.5	2.00	2.00	0.00
1,100.0	6.00	302.12	1,099.5	3,462.45	8.3	-13.3	-7.8	2.00	2.00	0.00
1,200.0	8.00	302.12	1,198.7	3,363.20	14.8	-23.6	-13.8	2.00	2.00	0.00
1,300.0	10.00	302.12	1,297.5	3,264.43	23.1	-36.9	-21.6	2.00	2.00	0.00
EOB TO 12° INC										
1,399.9	12.00	302.12	1,395.5	3,166.35	33.3	-53.0	-31.0	2.00	2.00	0.00
1,400.0	12.00	302.12	1,395.6	3,166.28	33.3	-53.0	-31.0	0.00	0.00	0.00
1,500.0	12.00	302.12	1,493.4	3,068.46	44.3	-70.6	-41.4	0.00	0.00	0.00
1,600.0	12.00	302.12	1,591.3	2,970.65	55.4	-88.2	-51.7	0.00	0.00	0.00
1,700.0	12.00	302.12	1,689.1	2,872.83	66.4	-105.8	-62.0	0.00	0.00	0.00
1,800.0	12.00	302.12	1,786.9	2,775.02	77.5	-123.4	-72.3	0.00	0.00	0.00
1,900.0	12.00	302.12	1,884.7	2,677.20	88.6	-141.1	-82.6	0.00	0.00	0.00
2,000.0	12.00	302.12	1,982.5	2,579.39	99.6	-158.7	-92.9	0.00	0.00	0.00
2,100.0	12.00	302.12	2,080.3	2,481.57	110.7	-176.3	-103.2	0.00	0.00	0.00
2,200.0	12.00	302.12	2,178.1	2,383.75	121.7	-193.9	-113.5	0.00	0.00	0.00
2,300.0	12.00	302.12	2,276.0	2,285.94	132.8	-211.5	-123.8	0.00	0.00	0.00
2,400.0	12.00	302.12	2,373.8	2,188.12	143.8	-229.1	-134.2	0.00	0.00	0.00
2,500.0	12.00	302.12	2,471.6	2,090.31	154.9	-246.7	-144.5	0.00	0.00	0.00
2,600.0	12.00	302.12	2,569.4	1,992.49	165.9	-264.3	-154.8	0.00	0.00	0.00
2,700.0	12.00	302.12	2,667.2	1,894.68	177.0	-281.9	-165.1	0.00	0.00	0.00
2,800.0	12.00	302.12	2,765.0	1,796.86	188.0	-299.5	-175.4	0.00	0.00	0.00
2,900.0	12.00	302.12	2,862.9	1,699.05	199.1	-317.1	-185.7	0.00	0.00	0.00
3,000.0	12.00	302.12	2,960.7	1,601.23	210.1	-334.7	-196.0	0.00	0.00	0.00
3,100.0	12.00	302.12	3,058.5	1,503.42	221.2	-352.3	-206.3	0.00	0.00	0.00
3,200.0	12.00	302.12	3,156.3	1,405.60	232.2	-369.9	-216.6	0.00	0.00	0.00
3,300.0	12.00	302.12	3,254.1	1,307.79	243.3	-387.5	-227.0	0.00	0.00	0.00
END OF TANGENT										
3,388.9	12.00	302.12	3,341.1	1,220.85	253.1	-403.2	-236.1	0.00	0.00	0.00
3,400.0	11.78	302.12	3,351.9	1,209.97	254.3	-405.1	-237.3	2.00	-2.00	0.00
3,500.0	9.78	302.12	3,450.2	1,111.73	264.3	-421.0	-246.5	2.00	-2.00	0.00
3,600.0	7.78	302.12	3,549.0	1,012.91	272.4	-433.9	-254.1	2.00	-2.00	0.00
3,700.0	5.78	302.12	3,648.3	913.61	278.7	-443.9	-259.9	2.00	-2.00	0.00
3,800.0	3.78	302.12	3,747.9	813.97	283.1	-450.9	-264.1	2.00	-2.00	0.00
3,900.0	1.78	302.12	3,847.8	714.09	285.7	-455.0	-266.5	2.00	-2.00	0.00
EOD TO VERTICAL										
3,988.8	0.00	0.00	3,936.6	625.30	286.4	-456.2	-267.2	2.00	-2.00	0.00
4,000.0	0.00	0.00	3,947.8	614.10	286.4	-456.2	-267.2	0.00	0.00	0.00
4,100.0	0.00	0.00	4,047.8	514.10	286.4	-456.2	-267.2	0.00	0.00	0.00
4,200.0	0.00	0.00	4,147.8	414.10	286.4	-456.2	-267.2	0.00	0.00	0.00
4,300.0	0.00	0.00	4,247.8	314.10	286.4	-456.2	-267.2	0.00	0.00	0.00
4,400.0	0.00	0.00	4,347.8	214.10	286.4	-456.2	-267.2	0.00	0.00	0.00
4,500.0	0.00	0.00	4,447.8	114.10	286.4	-456.2	-267.2	0.00	0.00	0.00
4,600.0	0.00	0.00	4,547.8	14.10	286.4	-456.2	-267.2	0.00	0.00	0.00

Database:	EDM 5000.1 Single User Db	Local Co-ordinate Reference:	Well SEVENTY HOLES F-J-5HNB
Company:	BONANZA CREEK ENERGY INC.	TVD Reference:	KB-EST @ 4561.9usft (Original Well Elev)
Project:	WELD COUNTY, COLORADO (NAD 83)	MD Reference:	KB-EST @ 4561.9usft (Original Well Elev)
Site:	NE NW SEC. 5 T4N R62W 6th P.M.	North Reference:	True
Well:	SEVENTY HOLES F-J-5HNB	Survey Calculation Method:	Minimum Curvature
Wellbore:	ORIGINAL WELLBORE		
Design:	PROPOSAL #3		

Planned Survey

MD (usft)	Inc (°)	Azi (°)	TVD (usft)	SS (usft)	+N/-S (usft)	+E/-W (usft)	Vertical Section (usft)	Dogleg Rate (°/100usft)	Build Rate (°/100usft)	Turn Rate (°/100usft)
4,700.0	0.00	0.00	4,647.8	-85.90	286.4	-456.2	-267.2	0.00	0.00	0.00
4,800.0	0.00	0.00	4,747.8	-185.90	286.4	-456.2	-267.2	0.00	0.00	0.00
4,900.0	0.00	0.00	4,847.8	-285.90	286.4	-456.2	-267.2	0.00	0.00	0.00
5,000.0	0.00	0.00	4,947.8	-385.90	286.4	-456.2	-267.2	0.00	0.00	0.00
5,100.0	0.00	0.00	5,047.8	-485.90	286.4	-456.2	-267.2	0.00	0.00	0.00
5,200.0	0.00	0.00	5,147.8	-585.90	286.4	-456.2	-267.2	0.00	0.00	0.00
5,300.0	0.00	0.00	5,247.8	-685.90	286.4	-456.2	-267.2	0.00	0.00	0.00
5,400.0	0.00	0.00	5,347.8	-785.90	286.4	-456.2	-267.2	0.00	0.00	0.00
5,500.0	0.00	0.00	5,447.8	-885.90	286.4	-456.2	-267.2	0.00	0.00	0.00
5,600.0	0.00	0.00	5,547.8	-985.90	286.4	-456.2	-267.2	0.00	0.00	0.00
5,700.0	0.00	0.00	5,647.8	-1,085.90	286.4	-456.2	-267.2	0.00	0.00	0.00
KOP (12°/100ft BUR)										
5,790.8	0.00	0.00	5,738.6	-1,176.70	286.4	-456.2	-267.2	0.00	0.00	0.00
5,800.0	1.10	176.91	5,747.8	-1,185.90	286.3	-456.2	-267.1	12.00	12.00	0.00
5,900.0	13.10	176.91	5,846.8	-1,284.95	274.0	-455.5	-254.8	12.00	12.00	0.00
6,000.0	25.10	176.91	5,941.2	-1,379.27	241.4	-453.8	-222.3	12.00	12.00	0.00
6,100.0	37.10	176.91	6,026.6	-1,464.73	189.9	-451.0	-170.9	12.00	12.00	0.00
6,200.0	49.10	176.91	6,099.5	-1,537.61	121.8	-447.3	-103.0	12.00	12.00	0.00
6,300.0	61.10	176.91	6,156.6	-1,594.72	40.0	-442.9	-21.5	12.00	12.00	0.00
6,400.0	73.10	176.91	6,195.5	-1,633.55	-51.8	-437.9	70.0	12.00	12.00	0.00
START OF TANGENT										
6,415.8	75.00	176.91	6,199.8	-1,637.90	-67.0	-437.1	85.1	12.00	12.00	0.00
6,500.0	75.00	176.91	6,221.6	-1,659.69	-148.2	-432.7	166.1	0.00	0.00	0.00
END OF TANGENT										
6,515.8	75.00	176.91	6,225.7	-1,663.78	-163.4	-431.9	181.3	0.00	0.00	0.00
6,600.0	85.10	176.91	6,240.2	-1,678.30	-246.1	-427.5	263.7	12.00	12.00	0.00
7" ICP *NEW* - SEVENTY HOLES F-J-5HNB										
6,640.8	90.00	176.91	6,241.9	-1,680.05	-286.8	-425.3	304.3	12.00	12.00	0.00
6,700.0	90.00	176.91	6,241.9	-1,680.05	-345.9	-422.1	363.2	0.00	0.00	0.00
6,800.0	90.00	176.91	6,241.9	-1,680.05	-445.8	-416.7	462.7	0.00	0.00	0.00
6,900.0	90.00	176.91	6,241.9	-1,680.05	-545.6	-411.3	562.3	0.00	0.00	0.00
7,000.0	90.00	176.91	6,241.9	-1,680.05	-645.5	-405.9	661.8	0.00	0.00	0.00
7,100.0	90.00	176.91	6,241.9	-1,680.05	-745.4	-400.5	761.4	0.00	0.00	0.00
7,200.0	90.00	176.91	6,241.9	-1,680.05	-845.2	-395.1	860.9	0.00	0.00	0.00
7,300.0	90.00	176.91	6,241.9	-1,680.05	-945.1	-389.7	960.5	0.00	0.00	0.00
7,400.0	90.00	176.91	6,241.9	-1,680.05	-1,044.9	-384.3	1,060.0	0.00	0.00	0.00
7,500.0	90.00	176.91	6,241.9	-1,680.04	-1,144.8	-379.0	1,159.6	0.00	0.00	0.00
7,600.0	90.00	176.91	6,241.9	-1,680.04	-1,244.6	-373.6	1,259.1	0.00	0.00	0.00
7,700.0	90.00	176.91	6,241.9	-1,680.04	-1,344.5	-368.2	1,358.6	0.00	0.00	0.00
7,800.0	90.00	176.91	6,241.9	-1,680.04	-1,444.3	-362.8	1,458.2	0.00	0.00	0.00
7,900.0	90.00	176.91	6,241.9	-1,680.04	-1,544.2	-357.4	1,557.7	0.00	0.00	0.00
8,000.0	90.00	176.91	6,241.9	-1,680.04	-1,644.0	-352.0	1,657.3	0.00	0.00	0.00
8,100.0	90.00	176.91	6,241.9	-1,680.04	-1,743.9	-346.6	1,756.8	0.00	0.00	0.00
8,200.0	90.00	176.91	6,241.9	-1,680.04	-1,843.8	-341.2	1,856.4	0.00	0.00	0.00
8,300.0	90.00	176.91	6,241.9	-1,680.04	-1,943.6	-335.9	1,955.9	0.00	0.00	0.00
8,400.0	90.00	176.91	6,241.9	-1,680.04	-2,043.5	-330.5	2,055.4	0.00	0.00	0.00
8,500.0	90.00	176.91	6,241.9	-1,680.04	-2,143.3	-325.1	2,155.0	0.00	0.00	0.00
8,600.0	90.00	176.91	6,241.9	-1,680.04	-2,243.2	-319.7	2,254.5	0.00	0.00	0.00
8,700.0	90.00	176.91	6,241.9	-1,680.04	-2,343.0	-314.3	2,354.1	0.00	0.00	0.00
8,800.0	90.00	176.91	6,241.9	-1,680.04	-2,442.9	-308.9	2,453.6	0.00	0.00	0.00
8,900.0	90.00	176.91	6,241.9	-1,680.03	-2,542.7	-303.5	2,553.2	0.00	0.00	0.00
9,000.0	90.00	176.91	6,241.9	-1,680.03	-2,642.6	-298.2	2,652.7	0.00	0.00	0.00
9,100.0	90.00	176.91	6,241.9	-1,680.03	-2,742.4	-292.8	2,752.3	0.00	0.00	0.00

Database:	EDM 5000.1 Single User Db	Local Co-ordinate Reference:	Well SEVENTY HOLES F-J-5HNB
Company:	BONANZA CREEK ENERGY INC.	TVD Reference:	KB-EST @ 4561.9usft (Original Well Elev)
Project:	WELD COUNTY, COLORADO (NAD 83)	MD Reference:	KB-EST @ 4561.9usft (Original Well Elev)
Site:	NE NW SEC. 5 T4N R62W 6th P.M.	North Reference:	True
Well:	SEVENTY HOLES F-J-5HNB	Survey Calculation Method:	Minimum Curvature
Wellbore:	ORIGINAL WELLBORE		
Design:	PROPOSAL #3		

Planned Survey

MD (usft)	Inc (°)	Azi (°)	TVD (usft)	SS (usft)	+N/-S (usft)	+E/-W (usft)	Vertical Section (usft)	Dogleg Rate (°/100usft)	Build Rate (°/100usft)	Turn Rate (°/100usft)
9,200.0	90.00	176.91	6,241.9	-1,680.03	-2,842.3	-287.4	2,851.8	0.00	0.00	0.00
9,300.0	90.00	176.91	6,241.9	-1,680.03	-2,942.2	-282.0	2,951.3	0.00	0.00	0.00
9,400.0	90.00	176.91	6,241.9	-1,680.03	-3,042.0	-276.6	3,050.9	0.00	0.00	0.00
9,500.0	90.00	176.91	6,241.9	-1,680.03	-3,141.9	-271.2	3,150.4	0.00	0.00	0.00
9,600.0	90.00	176.91	6,241.9	-1,680.02	-3,241.7	-265.9	3,250.0	0.00	0.00	0.00
9,700.0	90.00	176.91	6,241.9	-1,680.02	-3,341.6	-260.5	3,349.5	0.00	0.00	0.00
9,800.0	90.00	176.91	6,241.9	-1,680.02	-3,441.4	-255.1	3,449.1	0.00	0.00	0.00
9,900.0	90.00	176.91	6,241.9	-1,680.02	-3,541.3	-249.7	3,548.6	0.00	0.00	0.00
10,000.0	90.00	176.91	6,241.9	-1,680.02	-3,641.1	-244.3	3,648.2	0.00	0.00	0.00
10,100.0	90.00	176.92	6,241.9	-1,680.02	-3,741.0	-238.9	3,747.7	0.00	0.00	0.00
10,200.0	90.00	176.92	6,241.9	-1,680.02	-3,840.9	-233.6	3,847.2	0.00	0.00	0.00
10,300.0	90.00	176.92	6,241.9	-1,680.01	-3,940.7	-228.2	3,946.8	0.00	0.00	0.00
10,400.0	90.00	176.92	6,241.9	-1,680.01	-4,040.6	-222.8	4,046.3	0.00	0.00	0.00
10,500.0	90.00	176.92	6,241.9	-1,680.01	-4,140.4	-217.4	4,145.9	0.00	0.00	0.00
10,600.0	90.00	176.92	6,241.9	-1,680.01	-4,240.3	-212.0	4,245.4	0.00	0.00	0.00
10,700.0	90.00	176.92	6,241.9	-1,680.01	-4,340.1	-206.7	4,345.0	0.00	0.00	0.00
10,800.0	90.00	176.92	6,241.9	-1,680.00	-4,440.0	-201.3	4,444.5	0.00	0.00	0.00
10,900.0	90.00	176.92	6,241.9	-1,680.00	-4,539.8	-195.9	4,544.1	0.00	0.00	0.00
BHL - SEVENTY HOLES F-J-5HNB										
10,970.9	90.00	176.92	6,241.9	-1,680.00	-4,610.7	-192.1	4,614.7	0.00	0.00	0.00

Plan Annotations

MD (usft)	TVD (usft)	Local Coordinates		Comment
		+N/-S (usft)	+E/-W (usft)	
800.0	800.0	0.0	0.0	START NUDGE (2°/100ft BUR)
1,399.9	1,395.5	33.3	-53.0	EOB TO 12° INC
3,388.9	3,341.1	253.1	-403.2	END OF TANGENT
3,988.8	3,936.6	286.4	-456.2	EOD TO VERTICAL
5,790.8	5,738.6	286.4	-456.2	KOP (12°/100ft BUR)
6,415.8	6,199.8	-67.0	-437.1	START OF TANGENT
6,515.8	6,225.7	-163.4	-431.9	END OF TANGENT
6,640.8	6,241.9	-286.8	-425.3	7" ICP *NEW* - SEVENTY HOLES F-J-5HNB
10,970.9	6,241.9	-4,610.7	-192.1	BHL - SEVENTY HOLES F-J-5HNB