

The Road to Excellence Starts with Safety

Sold To #: 345242	Ship To #: 2146813	Quote #:	Sales Order #: 0903052819
Customer: NOBLE ENERGY INC E-BUSINESS		Customer Rep: Kevin Monaghan	
Well Name: Dechant Farms	Well #: 16-36	API/UWI #:	
Field:	City (SAP): PLATTEVILLE	County/Parish: WELD	State: COLORADO
Legal Description:			
Contractor: UNKNOWN		Rig/Platform Name/Num: WORKOVER RIG	
Job BOM:			
Well Type: GAS			
Sales Person: HALAMERICA\HX38199		Srvc Supervisor: Vaughn Oteri	

Job

Formation Name			
Formation Depth (MD)	Top		Bottom
Form Type			BHST
Job depth MD	2513ft		Job Depth TVD
Water Depth			Wk Ht Above Floor
Perforation Depth (MD)	From		To

Well Data

Description	New / Used	Size in	ID in	Weight lbm/ft	Thread	Grade	Top MD ft	Bottom MD ft	Top TVD ft	Bottom TVD ft
Tubing		2.375		4.7			0	2513	0	1550
Casing		4.5	4	11.6			0		0	

Tools and Accessories

Type	Size in	Qty	Make	Depth ft		Type	Size in	Qty	Make
Guide Shoe	1.66					Top Plug	1.66		
Float Shoe	1.66					Bottom Plug	1.66		
Float Collar	1.66					SSR plug set	1.66		
Insert Float	1.66					Plug Container	1.66		
Stage Tool	1.66					Centralizers	1.66		

Fluid Data

Stage/Plug #: 1

Fluid #	Stage Type	Fluid Name	Qty	Qty UoM	Mixing Density lbm/gal	Yield ft ³ /sack	Mix Fluid Gal	Rate bbl/min	Total Mix Fluid Gal
1	Halcem	HALCEM (TM) SYSTEM	125	sack	15.8	1.147			4.99
	94 lbm	CMT - PREMIUM - CLASS G REG OR TYPE V, BULK (100003685)							
	4.99 Gal	FRESH WATER							

Cement Left In Pipe	Amount	ft	Reason	Shoe Joint
---------------------	--------	----	--------	------------

Fluid Data

Stage/Plug #: 2

Fluid #	Stage Type	Fluid Name	Qty	Qty UoM	Mixing Density lbm/gal	Yield ft3/sack	Mix Fluid Gal	Rate bbl/min	Total Mix Fluid Gal
1	Halcem	HALCEM (TM) SYSTEM		sack	15.8	1.147			4.99
94 lbm		CMT - PREMIUM - CLASS G REG OR TYPE V, BULK (100003685)							
4.99 Gal		FRESH WATER							
Cement Left In Pipe		Amount	ft			Reason			Shoe Joint
Comment									

Legal Notice

Warning Disclaimer

Although the information contained in this report is based on sound engineering practices, the copyright owner(s) does (do) not accept any responsibility whatsoever, in negligence or otherwise, for any loss or damage arising from the possession or use of the report whether in terms of correctness or otherwise. The application, therefore, by the user of this report or any part thereof, is solely at the user's own risk.

Limitations of Liability

Except as expressly set forth herein, there are no representations or warranties by Halliburton, express or implied, including implied warranties of merchantability and/or fitness for a particular purpose. In no event will Halliburton or its suppliers be liable for consequential, incidental, special, punitive or exemplary damages (including, without limitation, loss of data, profits, use of hardware, or software). Customer accepts full responsibility for any investment made based on results from the Software. Any interpretations, analyses or modeling of any data, including, but not limited to Customer data, and any recommendation or decisions based upon such interpretations, analyses or modeling are opinions based upon inferences from measurements and empirical relationships and assumptions, which inferences and assumptions are not infallible, and with respect to which professional may differ. Accordingly, Halliburton cannot and does not warrant the accuracy, correctness or completeness of any such interpretation, recommendation, modeling or other products of the Software Product. As such, any interpretation, recommendation or modeling resulting from the Software for the purpose of any drilling, well treatment, production or financial decision will be at the sole risk of Customer. Under no circumstances will Halliburton or its suppliers be liable for any damages.

Table of Contents

Job Design 4

 Overview 4

 Pressure Schedule Inputs 4

 Pressure Schedule Table 4

Real-Time Job Summary 5

 Job Event Log 5

Attachments 6

 Case 1-Custom Results.png 6

Custom Graphs 7

 Custom Graph..... 7

Appendix 8

 3D Wellbore Schematic 8

1.0 Job Design

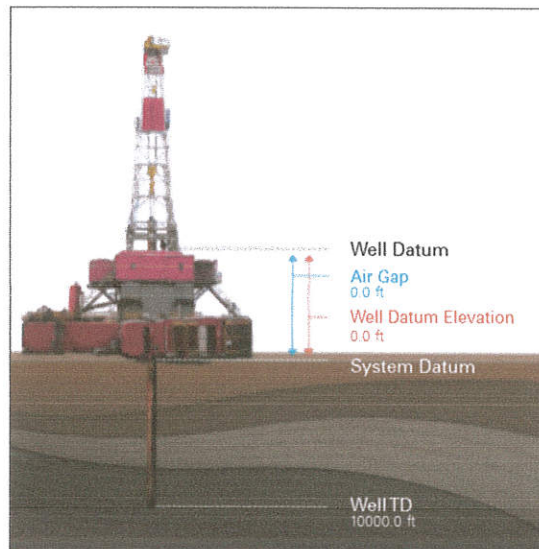
1.1 Overview

Job Type Primary Cement Job

Injection Path Casing/Conventional

Foam Job No

Well Snapshot



Simulations Performed

1.2 Pressure Schedule Inputs

Pressure Mode Conventional

1.3 Pressure Schedule Table

Start (Pump Volume in bbl)	End (Pump Volume in bbl)	Pressure (psi)
0.00	End	0.00

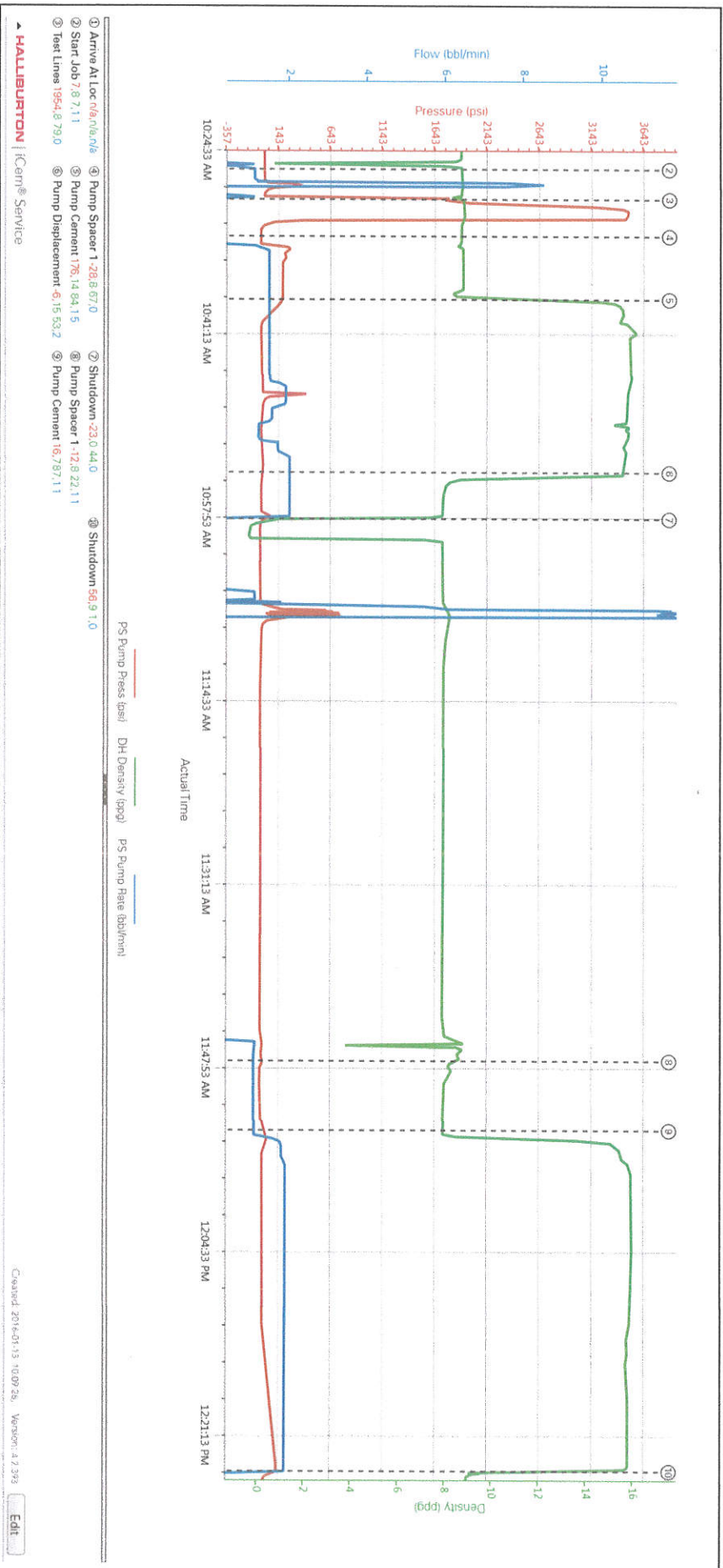
2.0 Real-Time Job Summary

2.1 Job Event Log

Type	Seq. No.	Activity	Graph Label	Date	Time	Source	PS Pump Press (psi)	DH Density (ppg)	PS Pump Rate (bbl/min)	Comments
Event	1	Arrive At Loc	Arrive At Loc	1/13/2016	09:30:00	USER				Arrive on location met with company rep to discuss job process and concerns
Event	2	Start Job	Start Job	1/13/2016	10:26:29	COM4	7.00	8.70	1.10	Held pre-job safety meeting with all hands on location to discuss job process and hazards
Event	3	Test Lines	Test Lines	1/13/2016	10:29:13	COM4	1954.00	8.79	0.00	Pressure tested pumps and lines found no leaks and pressure held good
Event	4	Pump Spacer 1	Pump Spacer 1	1/13/2016	10:32:34	COM4	-28.00	8.67	0.00	Pumped 6bbl of fresh water to fill hole
Event	5	Pump Cement	Pump Cement	1/13/2016	10:38:18	USER	176.00	14.78	1.40	Mixed 175sks or 33bbl of 15.8ppg Y1.15 G/SK 5.0 Halcem 1.8bpm -2psi
Event	6	Pump Displacement	Pump Displacement	1/13/2016	10:54:00	COM4	-6.00	15.53	2.00	Pumped 7.0bbl of fresh water to displace cement
Event	7	Shutdown	Shutdown	1/13/2016	10:58:13	COM4	-23.00	0.44	0.00	Shut down so that rig could pull tubing to 815 feet
Event	8	Pump Spacer 1	Pump Spacer 1	1/13/2016	11:47:27	COM4	-10.00	8.22	1.10	Pumped 6bbl of fresh water to fill hole
Event	9	Pump Cement	Pump Cement	1/13/2016	11:53:45	COM4	16.00	7.87	1.10	Mixed 315sks or 63bbl of 15.8ppg Y1.15 G/SK 5.0 Halcem at 2.0bpm 20psi
Event	10	Shutdown	Shutdown	1/13/2016	12:24:39	COM4	60.00	9.28	0.00	Shut down so that rig can pull tubing out and remove BOP to top off

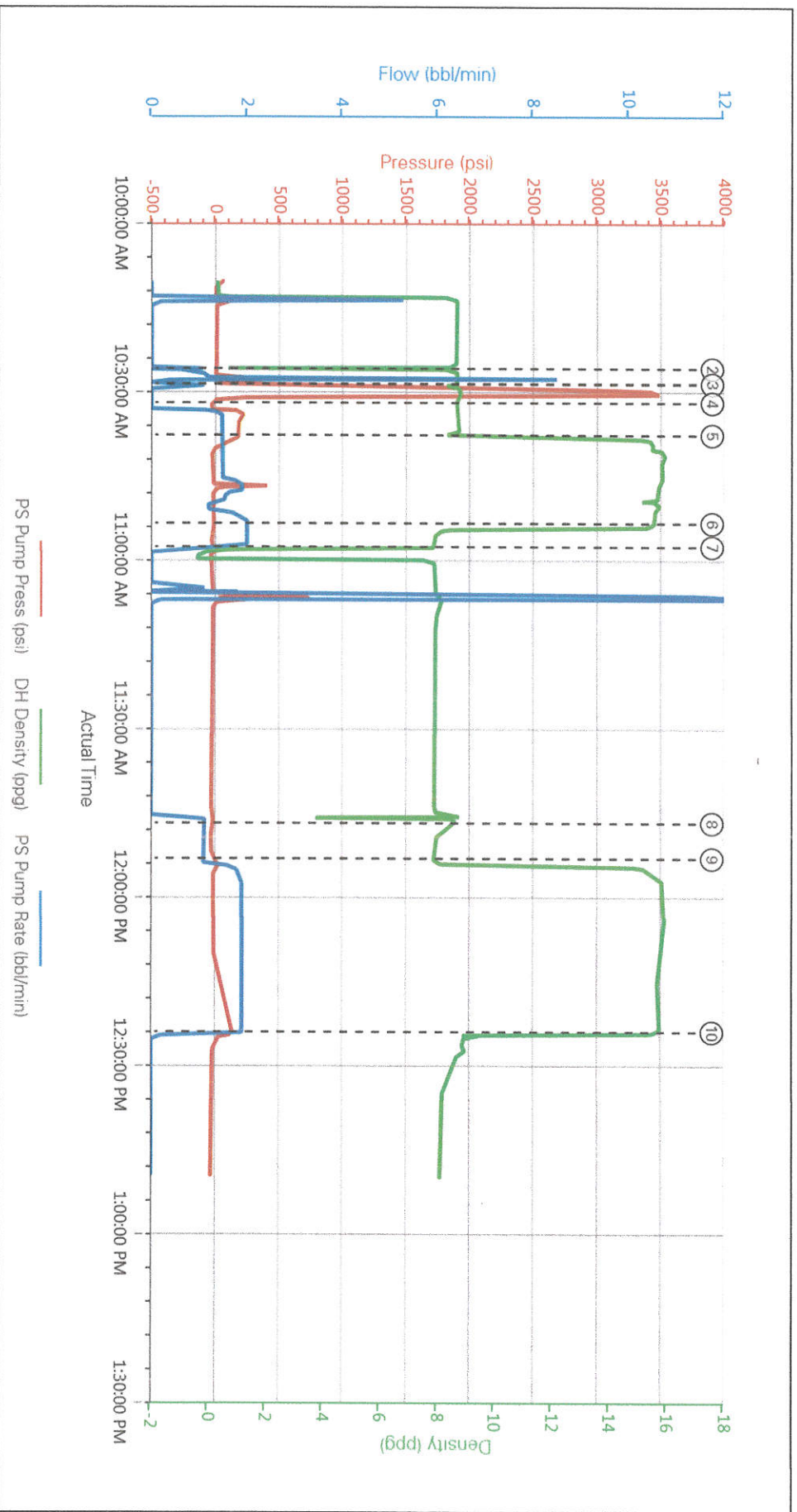
3.0 Attachments

3.1 Case 1-Custom Results.png



4.0 Custom Graphs

4.1 Custom Graph



HALLIBURTON

Customer: NOBLE ENERGY INC
Job: Noble Dechant Farms 16-36 pta
Case: Case 1

5.0 Appendix

5.1 3D Wellbore Schematic

