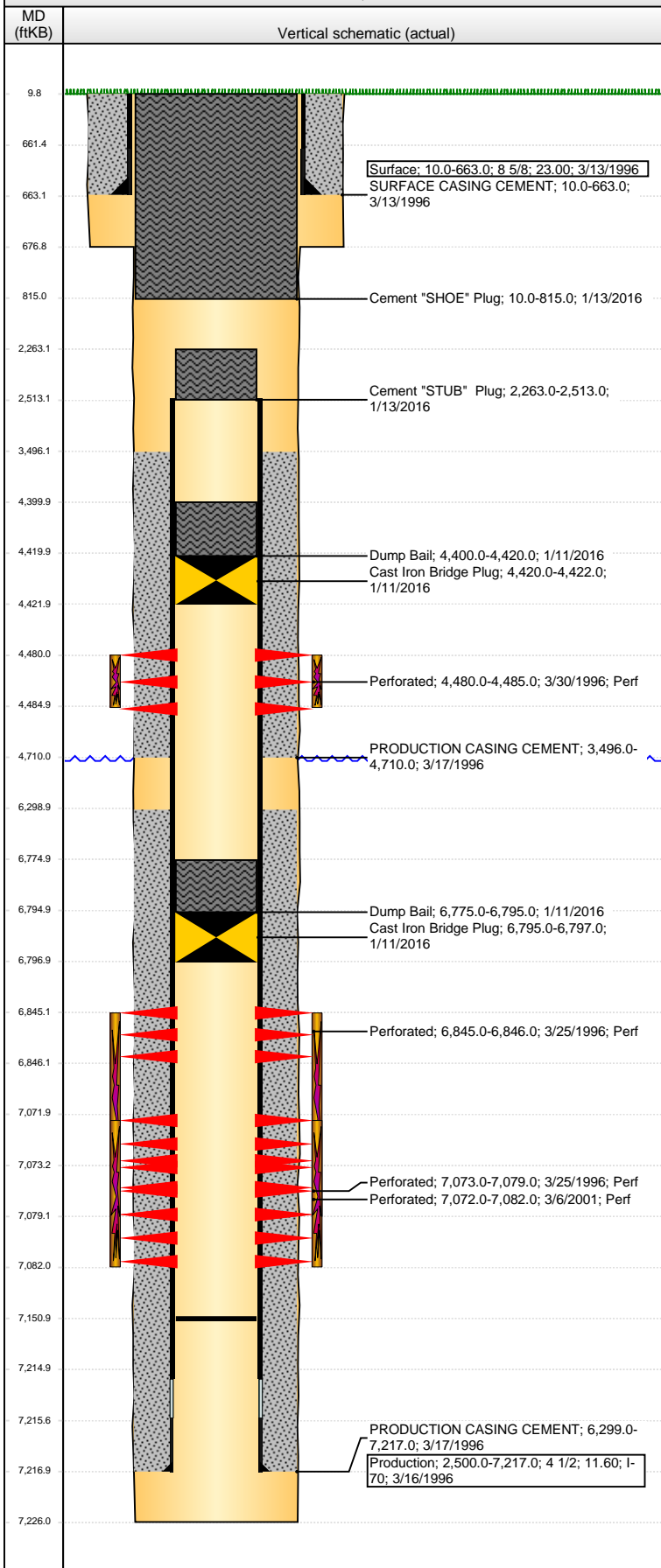


Well Name: DECHANT FARMS 16-36

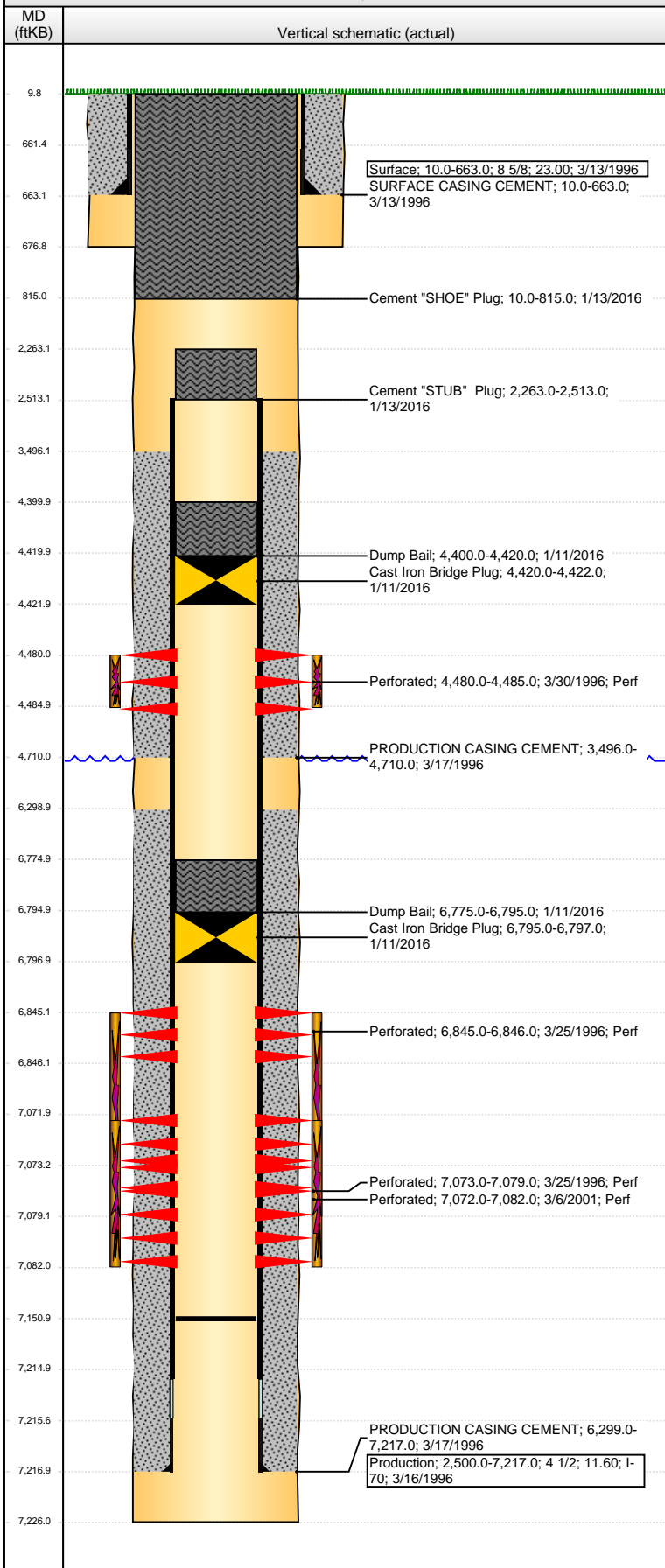
VERTICAL - ORIGINAL HOLE, 2/10/2016 1:18:49 PM



Well Header									
API 05-123-19101		Business Unit DJ BASIN			District 15		Well Config VERTICAL		
Original KB Elevation (ft) 4,833.00		KB - GL / MSL (ftKB) 10.00			Spud Date 3/12/1996		P & A Date 1/13/2016		
Comment									
Directions To Well 49 & 30, SOUTH 2MI, W 1/10, N 1/10 INTO									
Congressional Location									
Quarter 1	Quarter 2	Quarter 3 SE	Quarter 4 SE	Section 36	Township 3	Twtnshp N...	Range 65	Rng E/W Dir W	
Bottom Hole Location									
North-South Distance (ft)			From N or S Line		East-West Distance (ft)			From E or W Line	
Plug Back Total Depths									
Date	Depth (ftKB)	Method			Com				
3/20/1996	7,136.0	CASED HOLE LOG			DEPTH LOGGER ON CBL				
4/4/1996	7,175.0	TAG			CLEAN OUT TO LAND TUBING				
2/7/2013	7,151.0	TAG			TAG FILL				
Wellbore Sections									
Section Des			Size (in)		Act Top, MD (ftKB)		Act Btm, MD (ftKB)		
SURFACE			12 1/4		10.0		677.0		
PRODUCTION			7 7/8		677.0		7,226.0		
Zone Statuses									
Zone Name	Status Date	Status	Fluid Type	Job	Prod Method				
SUSSEX	4/6/1996	PR	Water	DRILLING/CO...	Flowing				
SUSSEX	1/28/2014	PR		ABANDON WE...					
SUSSEX	1/11/2016	P&A		DRILLING/CO...					
NIOBRARA	4/6/1996	PR	Water	DRILLING/CO...	Flowing				
NIOBRARA	1/28/2014	PR		ABANDON WE...					
NIOBRARA	1/11/2016	P&A		DRILLING/CO...					
CODELL	4/6/1996	PR	Water	RE-FRAC, 3/17...	Flowing				
CODELL	3/21/2001	PR		ABANDON WE...					
CODELL	1/28/2014	PR		ABANDON WE...					
CODELL	1/11/2016	P&A	Water		Flowing				
NIOBRARA-C...	1/28/2014	PR							
Casing Strings									
Surface, 663.0ftKB									
Casing Description Surface	Run Date 3/13/1996	OD (in) 8 5/8	Wt/Len (l... 23.00	Grade	Top, MD (ft... 10.0	MD (ftKB) 663.0			
Production, 7,217.0ftKB									
Casing Description Production	Run Date 3/16/1996	OD (in) 4 1/2	Wt/Len (l... 11.60	Grade I-70	Top, MD (ft... 10.0	MD (ftKB) 7,217.0			
Cement									
Description SURFACE CASING CEMENT				Top Depth (ftKB) 10.0		Bottom Depth (ftKB) 663.0			
Description PRODUCTION CASING CEMENT				Top Depth (ftKB) 3,496.0		Bottom Depth (ftKB) 4,710.0			
Description PRODUCTION CASING CEMENT				Top Depth (ftKB) 6,299.0		Bottom Depth (ftKB) 7,217.0			
Description Dump Bail				Top Depth (ftKB) 6,775.0		Bottom Depth (ftKB) 6,795.0			
Description Dump Bail				Top Depth (ftKB) 4,400.0		Bottom Depth (ftKB) 4,420.0			
Description Cement "STUB" Plug				Top Depth (ftKB) 2,263.0		Bottom Depth (ftKB) 2,513.0			
Description Cement "SHOE" Plug				Top Depth (ftKB) 10.0		Bottom Depth (ftKB) 815.0			
Tubing Strings									
Tubing Description Tubing	Run Date 2/8/2013	String... 2 3/8	ID (in) 1.995	Wt (lb/ft) 4.70	Grade J-55	Len (ft) 7,041.00	Set De...		
Perforation Data									
Zone		Brnch/St g	Entered Shot Total	Top (ftKB)		Btm (ftKB)		Date	
SUSSEX, ORIGINAL HOLE		B	18	4,480.00		4,485.00		3/30/1996	
NIOBRARA, ORIGINAL HOLE			4	6,845.00		6,846.00		3/25/1996	
CODELL, ORIGINAL HOLE			40	7,072.00		7,082.00		3/6/2001	

Well Name: DECHANT FARMS 16-36

VERTICAL - ORIGINAL HOLE, 2/10/2016 1:18:51 PM



Perforation Data					
Zone	Bnch/St g	Entered Shot Total	Top (ftKB)	Btm (ftKB)	Date
CODELL, ORIGINAL HOLE		14	7,073.00	7,079.00	3/25/1996
Stimulations & Treatments					
Date	Zone	Primary Job Type			
3/25/1996	NIORARA-CODELL, ORIGINAL HOLE	DRILLING/COMPLETION - ORIGINAL			
Technical Result		Tech Result Details		Tech Result Note	
Comment					
Date	Zone	Primary Job Type			
4/1/1996	SUSSEX, ORIGINAL HOLE	DRILLING/COMPLETION - ORIGINAL			
Technical Result		Tech Result Details		Tech Result Note	
Comment					
Date	Zone	Primary Job Type			
3/20/2001	CODELL, ORIGINAL HOLE	RE-FRAC			
Technical Result		Tech Result Details		Tech Result Note	
Comment					
Other In Hole					
Run Date	Des		OD (in)	Top (ftKB)	Btm (ftKB)
1/11/2016	Cast Iron Bridge Plug		3.99	6,795.0	6,797.0
1/11/2016	Cast Iron Bridge Plug		3.99	4,420.0	4,422.0
Logs					
Date	Type		Top, MD (ftKB)	Btm, MD (ftKB)	
3/15/1996	COMPENSATED DENSITY		4,300.0	7,224.0	
3/15/1996	INDUCTION		663.0	7,224.0	
3/20/1996	CEMENT BOND		3,350.0	7,136.0	