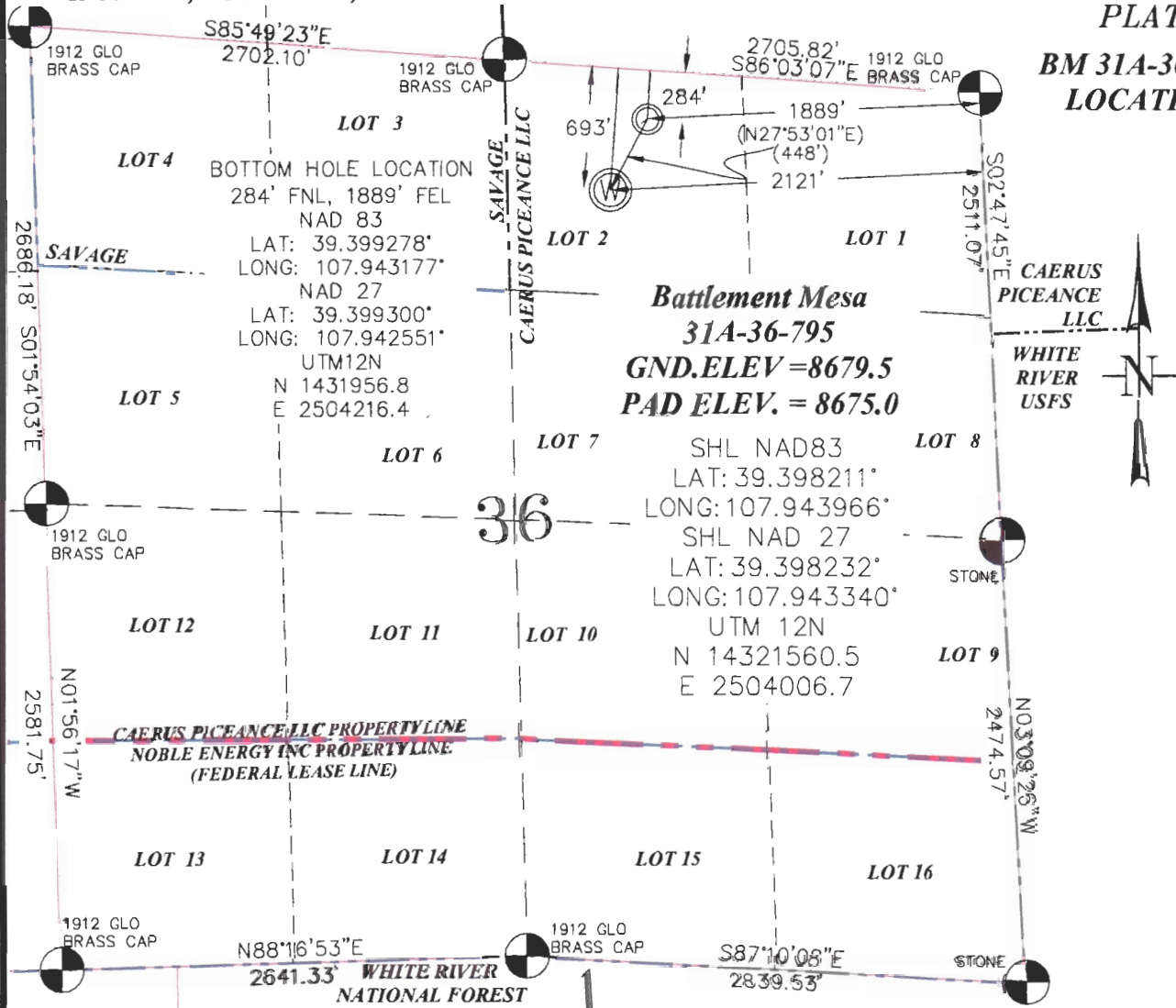


SEC. 36, T. 7 S., R. 95 W. OF THE 6TH P.M.

PLAT 1
BM 31A-36-795
LOCATION



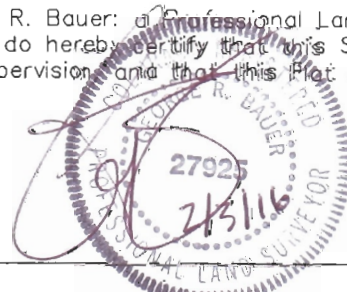
THIS WELL LOCATION PLAT WAS PREPARED FOR CAERUS PICEANCE LLC TO LOCATE THE BATTLEMENT MESA 31A-36-795 WELL, 693 FEET FROM THE NORTH LINE OF SAID SECTION AND 2121 FEET FROM THE EAST LINE OF LOT 2 (NW1/4NE1/4) OF SECTION 36, T. 7 S., R. 95 W. OF THE 6TH P.M. GARFIELD COUNTY, COLORADO.

SURVEYOR'S CERTIFICATE

REFERENCE NOTES

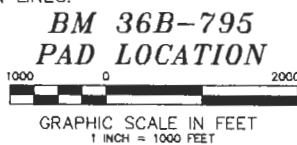
- 1) T. 7 S., R. 95 W., 6TH P.M. GLO PLAT.
- 2) U.S.G.S. QUAD: PARACHUTE, CO
- 3) ELEVATIONS BASED ON N.A.V.D. 1988 LIDAR BASED CONTROL PT CP MON 8
- 4) LATITUDES AND LONGITUDES ARE BASED ON NAD 83, COLORADO CENTRAL ZONE.
- 5) GPS OPERATOR ROBERT WOOD, OBSERVED A PDOP OF 1.9.
- 6) ALL GPS OBSERVATIONS ARE IN COMPLIANCE WITH COGCC RULE NO. 215.
- 7) SURFACE AND BOTTOM HOLE LOCATIONS ARE MEASURED 90° FROM SECTION LINES.

I, George R. Bauer: a Professional Land Surveyor in the State of Colorado do hereby certify that this Survey was made under my direct supervision and that this Plat represents said Survey.



—LEGEND—

- FIELD SURVEYED SECTION CORNER LOCATIONS
- FIELD SURVEYED WELL SHL LOCATION
- CALCULATED BOTTOM HOLE LOCATION



WELL LOCATION PLAT

CONSTRUCTION SURVEYS, INC.
0012 SUNRISE BLYD. SILT, CO
81652 (970)876-8753

SURVEY BY:REW 12/10/15	PDOP: 1.9
DRAWN BY:REW 02/02/16	DWG:CAERUS\BM36B-795PLAT_1
REVISED:	