



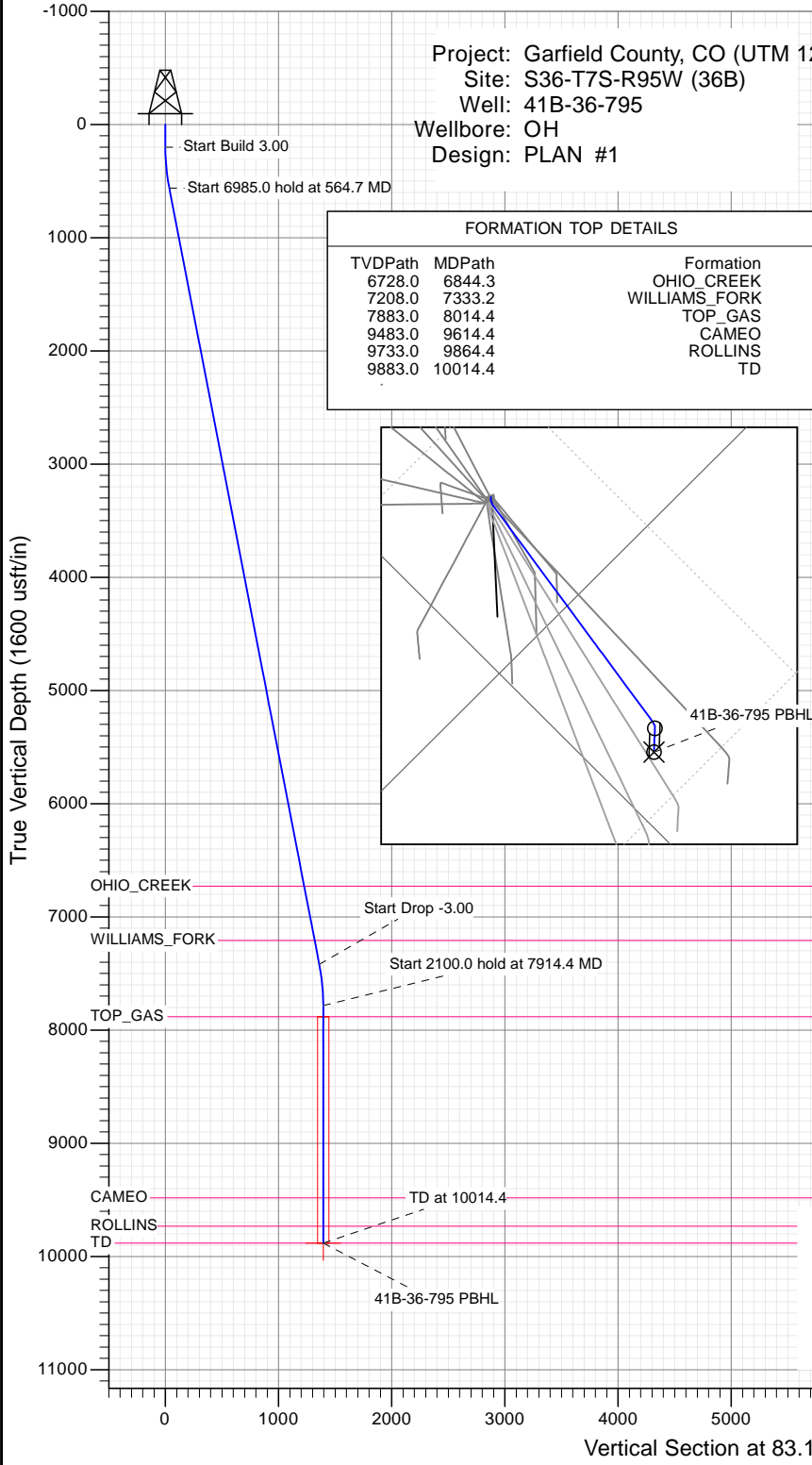
SECTION DETAILS

Sec	MD	Inc	Azi	TVD	+N/-S	+E/-W	Dleg	TFace	VSect	Target
1	0.0	0.00	0.00	0.0	0.0	0.0	0.00	0.00	0.0	
2	200.0	0.00	0.00	200.0	0.0	0.0	0.00	0.00	0.0	
3	564.7	10.94	83.11	562.5	4.2	34.5	3.00	83.11	34.7	
4	7549.7	10.94	83.11	7420.5	163.1	1350.5	0.00	0.00	1360.3	
5	7914.4	0.00	0.00	7783.0	167.3	1385.0	3.00	180.00	1395.0	
6	10014.4	0.00	0.00	9883.0	167.3	1385.0	0.00	0.00	1395.0	41B-36-795 PBHL

Project: Garfield County, CO (UTM 12  
 Site: S36-T7S-R95W (36B)  
 Well: 41B-36-795  
 Wellbore: OH  
 Design: PLAN #1

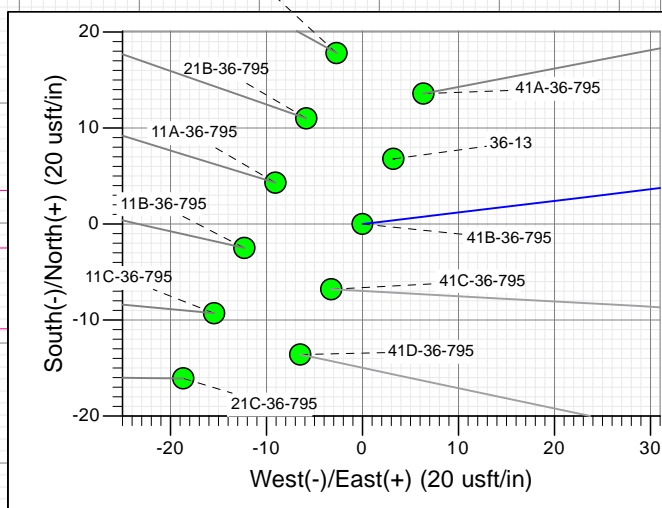
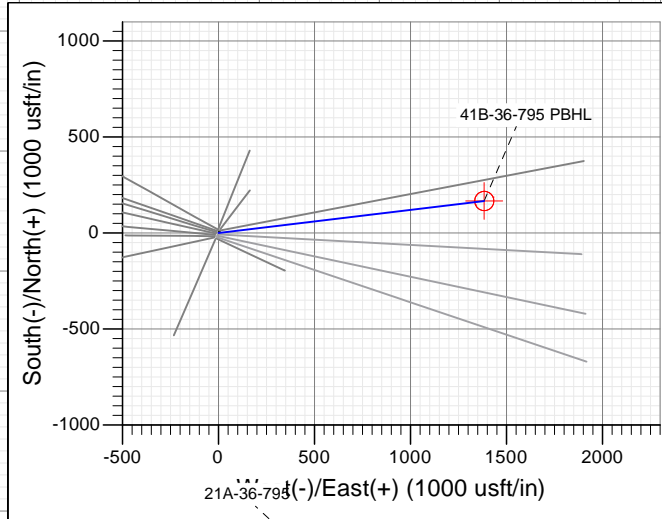
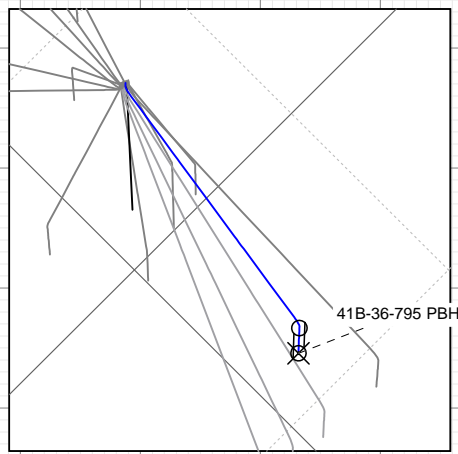
PLAN #1  
 41B-36-795  
 15XXX LR  
 30' KB @ 8714.0usft  
 Ground Level @ 8684.0  
 NAD 1927 - Western US  
 Well 41B-36-795, True North

Name	Type TD	Target No Target (Freehand)	Azimuth	Origin Type Slot	N/S	E/W	From TVD
41B-36-795 PBHL			83.11		0.0	0.0	0.0
			9883.0		167.3	1385.0	
							Latitude 39.398624
							Longitude -107.938444



FORMATION TOP DETAILS

TVDPPath	MDPath	Formation
6728.0	6844.3	OHIO_CREEK
7208.0	7333.2	WILLIAMS_FORK
7883.0	8014.4	TOP_GAS
9483.0	9614.4	CAMEO
9733.0	9864.4	ROLLINS
9883.0	10014.4	TD



Azimuths to True North  
 Magnetic North: 9.42°  
 Magnetic Field Strength: 51880.5snT  
 Dip Angle: 65.62°  
 Date: 12/17/2015  
 Model: HDGM

CASING DETAILS  
 No casing data is available



WELL DETAILS: 41B-36-795

+N/-S	+E/-W	Northing	Ground Level:	Easting	Latitude	Longitude
0.0	0.0	14321535.90	8684.0	2504007.00	39.398165	-107.943342



## Planning Report

<b>Database:</b>	USA EDM 5000 Multi Users DB	<b>Local Co-ordinate Reference:</b>	Well 41B-36-795
<b>Company:</b>	Caerus Oil & Gas	<b>TVD Reference:</b>	30' KB @ 8714.0usft
<b>Project:</b>	Garfield County, CO (UTM 12N)	<b>MD Reference:</b>	30' KB @ 8714.0usft
<b>Site:</b>	S36-T7S-R95W (36B)	<b>North Reference:</b>	True
<b>Well:</b>	41B-36-795	<b>Survey Calculation Method:</b>	Minimum Curvature
<b>Wellbore:</b>	OH		
<b>Design:</b>	PLAN #1		

<b>Project</b>	Garfield County, CO (UTM 12N)		
<b>Map System:</b>	Universal Transverse Mercator (US Survey Feet)	<b>System Datum:</b>	Mean Sea Level
<b>Geo Datum:</b>	NAD 1927 - Western US		
<b>Map Zone:</b>	Zone 12N (114 W to 108 W)		

<b>Site</b>	S36-T7S-R95W (36B)				
<b>Site Position:</b>		<b>Northing:</b>	14,321,539.90 usft	<b>Latitude:</b>	39.398177
<b>From:</b>	Map	<b>Easting:</b>	2,503,997.80 usft	<b>Longitude:</b>	-107.943374
<b>Position Uncertainty:</b>	0.0 usft	<b>Slot Radius:</b>	13-3/16"	<b>Grid Convergence:</b>	1.94 °

<b>Well</b>	41B-36-795					
<b>Well Position</b>	<b>+N/-S</b>	0.0 usft	<b>Northing:</b>	14,321,535.90 usft	<b>Latitude:</b>	39.398165
	<b>+E/-W</b>	0.0 usft	<b>Easting:</b>	2,504,007.00 usft	<b>Longitude:</b>	-107.943342
<b>Position Uncertainty</b>		0.0 usft	<b>Wellhead Elevation:</b>	0.0 usft	<b>Ground Level:</b>	8,684.0 usft

<b>Wellbore</b>	OH				
<b>Magnetics</b>	<b>Model Name</b>	<b>Sample Date</b>	<b>Declination</b>	<b>Dip Angle</b>	<b>Field Strength</b>
			(°)	(°)	(nT)
	HDGM	12/17/2015	9.42	65.62	51,881

<b>Design</b>	PLAN #1			
<b>Audit Notes:</b>				
<b>Version:</b>	<b>Phase:</b>	PLAN	<b>Tie On Depth:</b>	0.0
<b>Vertical Section:</b>	<b>Depth From (TVD)</b>	<b>+N/-S</b>	<b>+E/-W</b>	<b>Direction</b>
	(usft)	(usft)	(usft)	(°)
	0.0	0.0	0.0	83.11

Plan Sections										
Measured Depth (usft)	Inclination (°)	Azimuth (°)	Vertical Depth (usft)	+N/-S (usft)	+E/-W (usft)	Dogleg Rate (°/100usft)	Build Rate (°/100usft)	Turn Rate (°/100usft)	TFO (°)	Target
0.0	0.00	0.00	0.0	0.0	0.0	0.00	0.00	0.00	0.00	
200.0	0.00	0.00	200.0	0.0	0.0	0.00	0.00	0.00	0.00	
564.7	10.94	83.11	562.5	4.2	34.5	3.00	3.00	0.00	83.11	
7,549.7	10.94	83.11	7,420.5	163.1	1,350.5	0.00	0.00	0.00	0.00	
7,914.4	0.00	0.00	7,783.0	167.3	1,385.0	3.00	-3.00	0.00	180.00	
10,014.4	0.00	0.00	9,883.0	167.3	1,385.0	0.00	0.00	0.00	0.00	41B-36-795 PBHL

## Planning Report

<b>Database:</b>	USA EDM 5000 Multi Users DB	<b>Local Co-ordinate Reference:</b>	Well 41B-36-795
<b>Company:</b>	Caerus Oil & Gas	<b>TVD Reference:</b>	30' KB @ 8714.0usft
<b>Project:</b>	Garfield County, CO (UTM 12N)	<b>MD Reference:</b>	30' KB @ 8714.0usft
<b>Site:</b>	S36-T7S-R95W (36B)	<b>North Reference:</b>	True
<b>Well:</b>	41B-36-795	<b>Survey Calculation Method:</b>	Minimum Curvature
<b>Wellbore:</b>	OH		
<b>Design:</b>	PLAN #1		

Planned Survey									
Measured Depth (usft)	Inclination (°)	Azimuth (°)	Vertical Depth (usft)	+N/-S (usft)	+E/-W (usft)	Vertical Section (usft)	Dogleg Rate (°/100usft)	Build Rate (°/100u)	Comments / Formations
0.0	0.00	0.00	0.0	0.0	0.0	0.0	0.00	0.00	
100.0	0.00	0.00	100.0	0.0	0.0	0.0	0.00	0.00	
200.0	0.00	0.00	200.0	0.0	0.0	0.0	0.00	0.00	Start Build 3.00
300.0	3.00	83.11	300.0	0.3	2.6	2.6	3.00	3.00	
400.0	6.00	83.11	399.6	1.3	10.4	10.5	3.00	3.00	
500.0	9.00	83.11	498.8	2.8	23.3	23.5	3.00	3.00	
564.7	10.94	83.11	562.5	4.2	34.5	34.7	3.00	3.00	Start 6985.0 hold at 564.7 MD
600.0	10.94	83.11	597.1	5.0	41.1	41.4	0.00	0.00	
700.0	10.94	83.11	695.3	7.2	60.0	60.4	0.00	0.00	
800.0	10.94	83.11	793.5	9.5	78.8	79.4	0.00	0.00	
900.0	10.94	83.11	891.7	11.8	97.6	98.3	0.00	0.00	
1,000.0	10.94	83.11	989.9	14.1	116.5	117.3	0.00	0.00	
1,100.0	10.94	83.11	1,088.1	16.3	135.3	136.3	0.00	0.00	
1,200.0	10.94	83.11	1,186.2	18.6	154.2	155.3	0.00	0.00	
1,300.0	10.94	83.11	1,284.4	20.9	173.0	174.3	0.00	0.00	
1,400.0	10.94	83.11	1,382.6	23.2	191.8	193.2	0.00	0.00	
1,500.0	10.94	83.11	1,480.8	25.4	210.7	212.2	0.00	0.00	
1,600.0	10.94	83.11	1,579.0	27.7	229.5	231.2	0.00	0.00	
1,700.0	10.94	83.11	1,677.2	30.0	248.4	250.2	0.00	0.00	
1,800.0	10.94	83.11	1,775.3	32.3	267.2	269.1	0.00	0.00	
1,900.0	10.94	83.11	1,873.5	34.5	286.0	288.1	0.00	0.00	
2,000.0	10.94	83.11	1,971.7	36.8	304.9	307.1	0.00	0.00	
2,100.0	10.94	83.11	2,069.9	39.1	323.7	326.1	0.00	0.00	
2,200.0	10.94	83.11	2,168.1	41.4	342.6	345.1	0.00	0.00	
2,300.0	10.94	83.11	2,266.2	43.7	361.4	364.0	0.00	0.00	
2,400.0	10.94	83.11	2,364.4	45.9	380.3	383.0	0.00	0.00	
2,500.0	10.94	83.11	2,462.6	48.2	399.1	402.0	0.00	0.00	
2,600.0	10.94	83.11	2,560.8	50.5	417.9	421.0	0.00	0.00	
2,700.0	10.94	83.11	2,659.0	52.8	436.8	439.9	0.00	0.00	
2,800.0	10.94	83.11	2,757.2	55.0	455.6	458.9	0.00	0.00	
2,900.0	10.94	83.11	2,855.3	57.3	474.5	477.9	0.00	0.00	
3,000.0	10.94	83.11	2,953.5	59.6	493.3	496.9	0.00	0.00	
3,100.0	10.94	83.11	3,051.7	61.9	512.1	515.9	0.00	0.00	
3,200.0	10.94	83.11	3,149.9	64.1	531.0	534.8	0.00	0.00	
3,300.0	10.94	83.11	3,248.1	66.4	549.8	553.8	0.00	0.00	
3,400.0	10.94	83.11	3,346.3	68.7	568.7	572.8	0.00	0.00	
3,500.0	10.94	83.11	3,444.4	71.0	587.5	591.8	0.00	0.00	
3,600.0	10.94	83.11	3,542.6	73.2	606.3	610.7	0.00	0.00	
3,700.0	10.94	83.11	3,640.8	75.5	625.2	629.7	0.00	0.00	
3,800.0	10.94	83.11	3,739.0	77.8	644.0	648.7	0.00	0.00	
3,900.0	10.94	83.11	3,837.2	80.1	662.9	667.7	0.00	0.00	
4,000.0	10.94	83.11	3,935.3	82.3	681.7	686.7	0.00	0.00	
4,100.0	10.94	83.11	4,033.5	84.6	700.5	705.6	0.00	0.00	
4,200.0	10.94	83.11	4,131.7	86.9	719.4	724.6	0.00	0.00	
4,300.0	10.94	83.11	4,229.9	89.2	738.2	743.6	0.00	0.00	
4,400.0	10.94	83.11	4,328.1	91.4	757.1	762.6	0.00	0.00	
4,500.0	10.94	83.11	4,426.3	93.7	775.9	781.5	0.00	0.00	
4,600.0	10.94	83.11	4,524.4	96.0	794.8	800.5	0.00	0.00	
4,700.0	10.94	83.11	4,622.6	98.3	813.6	819.5	0.00	0.00	
4,800.0	10.94	83.11	4,720.8	100.5	832.4	838.5	0.00	0.00	
4,900.0	10.94	83.11	4,819.0	102.8	851.3	857.5	0.00	0.00	
5,000.0	10.94	83.11	4,917.2	105.1	870.1	876.4	0.00	0.00	

## Planning Report

<b>Database:</b>	USA EDM 5000 Multi Users DB	<b>Local Co-ordinate Reference:</b>	Well 41B-36-795
<b>Company:</b>	Caerus Oil & Gas	<b>TVD Reference:</b>	30' KB @ 8714.0usft
<b>Project:</b>	Garfield County, CO (UTM 12N)	<b>MD Reference:</b>	30' KB @ 8714.0usft
<b>Site:</b>	S36-T7S-R95W (36B)	<b>North Reference:</b>	True
<b>Well:</b>	41B-36-795	<b>Survey Calculation Method:</b>	Minimum Curvature
<b>Wellbore:</b>	OH		
<b>Design:</b>	PLAN #1		

Planned Survey									
Measured Depth (usft)	Inclination (°)	Azimuth (°)	Vertical Depth (usft)	+N/-S (usft)	+E/-W (usft)	Vertical Section (usft)	Dogleg Rate (°/100usft)	Build Rate (°/100u)	Comments / Formations
5,100.0	10.94	83.11	5,015.4	107.4	889.0	895.4	0.00	0.00	
5,200.0	10.94	83.11	5,113.5	109.6	907.8	914.4	0.00	0.00	
5,300.0	10.94	83.11	5,211.7	111.9	926.6	933.4	0.00	0.00	
5,400.0	10.94	83.11	5,309.9	114.2	945.5	952.3	0.00	0.00	
5,500.0	10.94	83.11	5,408.1	116.5	964.3	971.3	0.00	0.00	
5,600.0	10.94	83.11	5,506.3	118.7	983.2	990.3	0.00	0.00	
5,700.0	10.94	83.11	5,604.5	121.0	1,002.0	1,009.3	0.00	0.00	
5,800.0	10.94	83.11	5,702.6	123.3	1,020.8	1,028.3	0.00	0.00	
5,900.0	10.94	83.11	5,800.8	125.6	1,039.7	1,047.2	0.00	0.00	
6,000.0	10.94	83.11	5,899.0	127.9	1,058.5	1,066.2	0.00	0.00	
6,100.0	10.94	83.11	5,997.2	130.1	1,077.4	1,085.2	0.00	0.00	
6,200.0	10.94	83.11	6,095.4	132.4	1,096.2	1,104.2	0.00	0.00	
6,300.0	10.94	83.11	6,193.5	134.7	1,115.0	1,123.2	0.00	0.00	
6,400.0	10.94	83.11	6,291.7	137.0	1,133.9	1,142.1	0.00	0.00	
6,500.0	10.94	83.11	6,389.9	139.2	1,152.7	1,161.1	0.00	0.00	
6,600.0	10.94	83.11	6,488.1	141.5	1,171.6	1,180.1	0.00	0.00	
6,700.0	10.94	83.11	6,586.3	143.8	1,190.4	1,199.1	0.00	0.00	
6,800.0	10.94	83.11	6,684.5	146.1	1,209.3	1,218.0	0.00	0.00	
6,844.3	10.94	83.11	6,728.0	147.1	1,217.6	1,226.5	0.00	0.00	OHIO_CREEK
6,900.0	10.94	83.11	6,782.6	148.3	1,228.1	1,237.0	0.00	0.00	
7,000.0	10.94	83.11	6,880.8	150.6	1,246.9	1,256.0	0.00	0.00	
7,100.0	10.94	83.11	6,979.0	152.9	1,265.8	1,275.0	0.00	0.00	
7,200.0	10.94	83.11	7,077.2	155.2	1,284.6	1,294.0	0.00	0.00	
7,300.0	10.94	83.11	7,175.4	157.4	1,303.5	1,312.9	0.00	0.00	
7,333.2	10.94	83.11	7,208.0	158.2	1,309.7	1,319.2	0.00	0.00	WILLIAMS_FORK
7,400.0	10.94	83.11	7,273.6	159.7	1,322.3	1,331.9	0.00	0.00	
7,500.0	10.94	83.11	7,371.7	162.0	1,341.1	1,350.9	0.00	0.00	
7,549.7	10.94	83.11	7,420.5	163.1	1,350.5	1,360.3	0.00	0.00	Start Drop -3.00
7,600.0	9.43	83.11	7,470.0	164.2	1,359.3	1,369.2	3.00	-3.00	
7,700.0	6.43	83.11	7,569.1	165.8	1,373.0	1,383.0	3.00	-3.00	
7,800.0	3.43	83.11	7,668.7	166.9	1,381.6	1,391.6	3.00	-3.00	
7,900.0	0.43	83.11	7,768.6	167.3	1,384.9	1,395.0	3.00	-3.00	
7,914.4	0.00	0.00	7,783.0	167.3	1,385.0	1,395.0	3.00	-3.00	Start 2100.0 hold at 7914.4 MD
8,000.0	0.00	0.00	7,868.6	167.3	1,385.0	1,395.0	0.00	0.00	
8,014.4	0.00	0.00	7,883.0	167.3	1,385.0	1,395.0	0.00	0.00	TOP_GAS
8,100.0	0.00	0.00	7,968.6	167.3	1,385.0	1,395.0	0.00	0.00	
8,200.0	0.00	0.00	8,068.6	167.3	1,385.0	1,395.0	0.00	0.00	
8,300.0	0.00	0.00	8,168.6	167.3	1,385.0	1,395.0	0.00	0.00	
8,400.0	0.00	0.00	8,268.6	167.3	1,385.0	1,395.0	0.00	0.00	
8,500.0	0.00	0.00	8,368.6	167.3	1,385.0	1,395.0	0.00	0.00	
8,600.0	0.00	0.00	8,468.6	167.3	1,385.0	1,395.0	0.00	0.00	
8,700.0	0.00	0.00	8,568.6	167.3	1,385.0	1,395.0	0.00	0.00	
8,800.0	0.00	0.00	8,668.6	167.3	1,385.0	1,395.0	0.00	0.00	
8,900.0	0.00	0.00	8,768.6	167.3	1,385.0	1,395.0	0.00	0.00	
9,000.0	0.00	0.00	8,868.6	167.3	1,385.0	1,395.0	0.00	0.00	
9,100.0	0.00	0.00	8,968.6	167.3	1,385.0	1,395.0	0.00	0.00	
9,200.0	0.00	0.00	9,068.6	167.3	1,385.0	1,395.0	0.00	0.00	
9,300.0	0.00	0.00	9,168.6	167.3	1,385.0	1,395.0	0.00	0.00	
9,400.0	0.00	0.00	9,268.6	167.3	1,385.0	1,395.0	0.00	0.00	
9,500.0	0.00	0.00	9,368.6	167.3	1,385.0	1,395.0	0.00	0.00	
9,600.0	0.00	0.00	9,468.6	167.3	1,385.0	1,395.0	0.00	0.00	
9,614.4	0.00	0.00	9,483.0	167.3	1,385.0	1,395.0	0.00	0.00	CAMEO

## Planning Report

<b>Database:</b>	USA EDM 5000 Multi Users DB	<b>Local Co-ordinate Reference:</b>	Well 41B-36-795
<b>Company:</b>	Caerus Oil & Gas	<b>TVD Reference:</b>	30' KB @ 8714.0usft
<b>Project:</b>	Garfield County, CO (UTM 12N)	<b>MD Reference:</b>	30' KB @ 8714.0usft
<b>Site:</b>	S36-T7S-R95W (36B)	<b>North Reference:</b>	True
<b>Well:</b>	41B-36-795	<b>Survey Calculation Method:</b>	Minimum Curvature
<b>Wellbore:</b>	OH		
<b>Design:</b>	PLAN #1		

Planned Survey									
Measured Depth (usft)	Inclination (°)	Azimuth (°)	Vertical Depth (usft)	+N/-S (usft)	+E/-W (usft)	Vertical Section (usft)	Dogleg Rate (°/100usft)	Build Rate (°/100u)	Comments / Formations
9,700.0	0.00	0.00	9,568.6	167.3	1,385.0	1,395.0	0.00	0.00	
9,800.0	0.00	0.00	9,668.6	167.3	1,385.0	1,395.0	0.00	0.00	
9,864.4	0.00	0.00	9,733.0	167.3	1,385.0	1,395.0	0.00	0.00	ROLLINS
9,900.0	0.00	0.00	9,768.6	167.3	1,385.0	1,395.0	0.00	0.00	
10,000.0	0.00	0.00	9,868.6	167.3	1,385.0	1,395.0	0.00	0.00	
10,014.4	0.00	0.00	9,883.0	167.3	1,385.0	1,395.0	0.00	0.00	TD at 10014.4 - TD

Targets									
Target Name	Dip Angle (°)	Dip Dir. (°)	TVD (usft)	+N/-S (usft)	+E/-W (usft)	Northing (usft)	Easting (usft)	Latitude	Longitude
41B-36-795 PBHL - hit/miss target - Shape - Circle (radius 50.0)	0.00	0.00	9,883.0	167.3	1,385.0	14,321,750.00	2,505,385.50	39.398624	-107.938444

Formations						
Measured Depth (usft)	Vertical Depth (usft)	Name	Lithology	Dip (°)	Dip Direction (°)	
6,844.3	6,728.0	OHIO_CREEK				
7,333.2	7,208.0	WILLIAMS_FORK				
8,014.4	7,883.0	TOP_GAS				
9,614.4	9,483.0	CAMEO				
9,864.4	9,733.0	ROLLINS				
10,014.4	9,883.0	TD				

Plan Annotations				
Measured Depth (usft)	Vertical Depth (usft)	+N/-S (usft)	+E/-W (usft)	Comment
200.0	200.0	0.0	0.0	Start Build 3.00
564.7	562.5	4.2	34.5	Start 6985.0 hold at 564.7 MD
7,549.7	7,420.5	163.1	1,350.5	Start Drop -3.00
7,914.4	7,783.0	167.3	1,385.0	Start 2100.0 hold at 7914.4 MD
10,014.4	9,883.0	167.3	1,385.0	TD at 10014.4