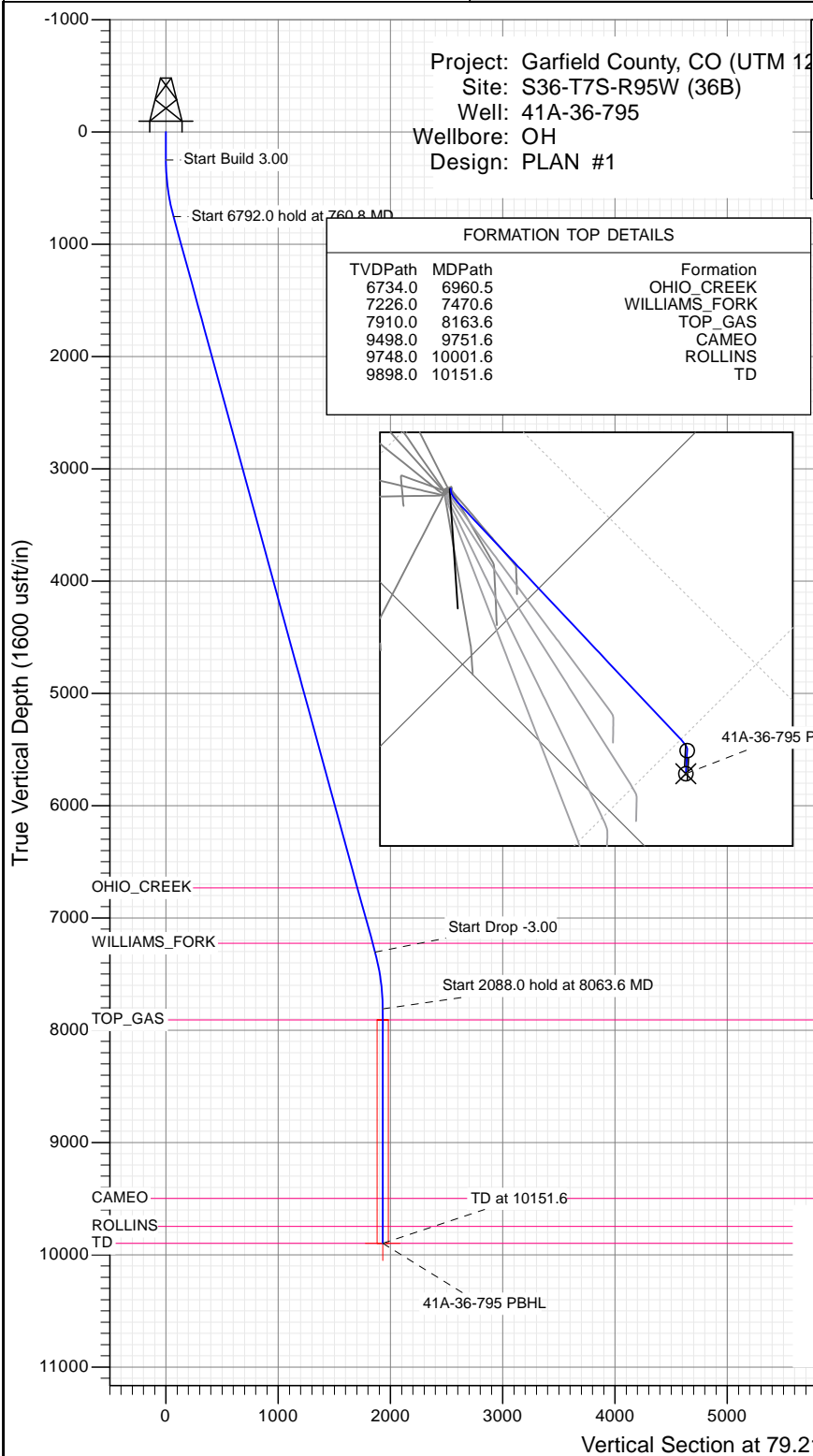




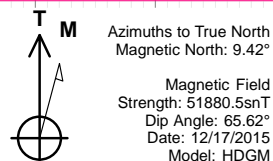
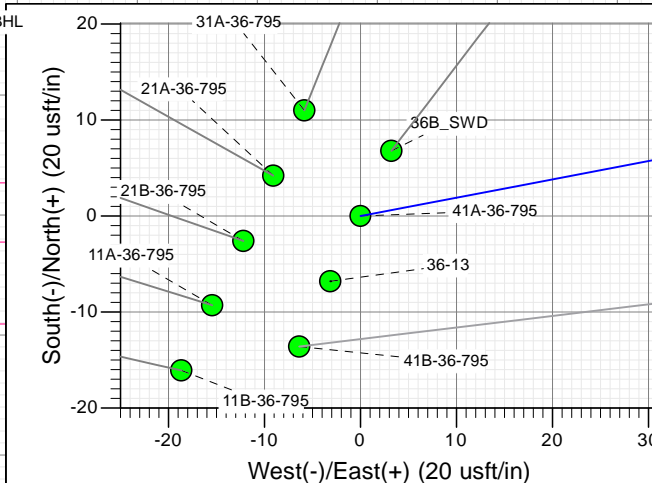
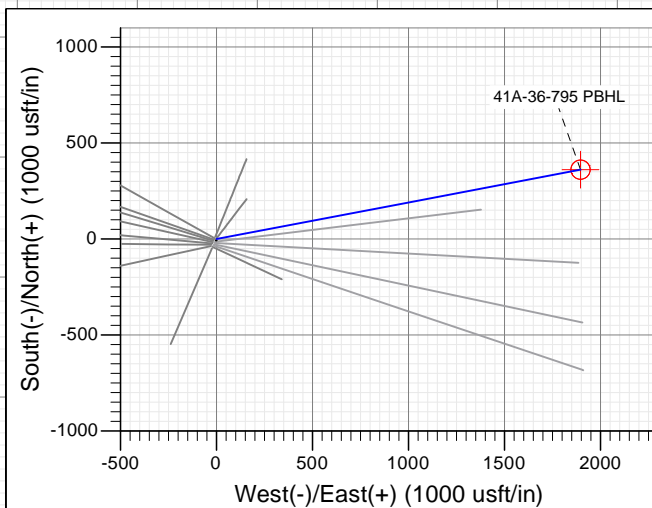
SECTION DETAILS

Sec	MD	Inc	Azi	TVD	+N/-S	+E/-W	Dleg	TFace	VSect	Target
1	0.0	0.00	0.00	0.0	0.0	0.0	0.00	0.00	0.0	
2	250.0	0.00	0.00	250.0	0.0	0.0	0.00	0.00	0.0	
3	760.8	15.32	79.21	754.7	12.7	66.7	3.00	79.21	67.9	
4	7552.8	15.32	79.21	7305.3	348.8	1829.9	0.00	0.00	1862.9	
5	8063.6	0.00	0.00	7810.0	361.6	1896.6	3.00	180.00	1930.8	
6	10151.6	0.00	0.00	9898.0	361.6	1896.6	0.00	0.00	1930.8	41A-36-795 PBHL



PLAN #1
41A-36-795
15XXX LR
30' KB @ 8714.0usft
Ground Level @ 8684.0
NAD 1927 - Western US
Well 41A-36-795, True North

Type	Target	Azimuth	Origin Type	N/S	E/W	From TVD
TD	No Target (Freehand)	79.21	Slot	0.0	0.0	0.0
Name		TVD	+N/-S	+E/-W	Latitude	Longitude
41A-36-795 PBHL		9898.0	361.6	1896.6	39.399194	-107.936611



CASING DETAILS

No casing data is available



WELL DETAILS: 41A-36-795

+N/-S	+E/-W	Northing	Easting	Ground Level:	8684.0	Latitude	Longitude
0.0	0.0	14321549.70	2504012.90			39.398202	-107.943320



Planning Report

Database:	USA EDM 5000 Multi Users DB	Local Co-ordinate Reference:	Well 41A-36-795
Company:	Caerus Oil & Gas	TVD Reference:	30' KB @ 8714.0usft
Project:	Garfield County, CO (UTM 12N)	MD Reference:	30' KB @ 8714.0usft
Site:	S36-T7S-R95W (36B)	North Reference:	True
Well:	41A-36-795	Survey Calculation Method:	Minimum Curvature
Wellbore:	OH		
Design:	PLAN #1		

Project	Garfield County, CO (UTM 12N)		
Map System:	Universal Transverse Mercator (US Survey Feet)	System Datum:	Mean Sea Level
Geo Datum:	NAD 1927 - Western US		
Map Zone:	Zone 12N (114 W to 108 W)		

Site		S36-T7S-R95W (36B)			
Site Position:		Northing:	14,321,539.90 usft	Latitude:	39.398177
From:	Map	Easting:	2,503,997.80 usft	Longitude:	-107.943374
Position Uncertainty:	0.0 usft	Slot Radius:	13-3/16 "	Grid Convergence:	1.94 °

Well	41A-36-795					
Well Position	+N/-S	0.0 usft	Northing:	14,321,549.70 usft	Latitude:	39.398202
	+E/-W	0.0 usft	Easting:	2,504,012.90 usft	Longitude:	-107.943320
Position Uncertainty		0.0 usft	Wellhead Elevation:	0.0 usft	Ground Level:	8,684.0 usft

Wellbore	OH				
Magnetics	Model Name	Sample Date	Declination	Dip Angle	Field Strength
			(°)	(°)	(nT)
	HDGM	12/17/2015	9.42	65.62	51,881

Design	PLAN #1			
Audit Notes:				
Version:	Phase:	PLAN	Tie On Depth:	0.0
Vertical Section:	Depth From (TVD)	+N/-S	+E/-W	Direction
	(usft)	(usft)	(usft)	(°)
	0.0	0.0	0.0	79.21

Plan Sections										
Measured Depth	Inclination	Azimuth	Vertical Depth	+N/-S	+E/-W	Dogleg Rate	Build Rate	Turn Rate	TFO	Target
(usft)	(°)	(°)	(usft)	(usft)	(usft)	(°/100usft)	(°/100usft)	(°/100usft)	(°)	
0.0	0.00	0.00	0.0	0.0	0.0	0.00	0.00	0.00	0.00	
250.0	0.00	0.00	250.0	0.0	0.0	0.00	0.00	0.00	0.00	
760.8	15.32	79.21	754.7	12.7	66.7	3.00	3.00	0.00	79.21	
7,552.8	15.32	79.21	7,305.3	348.8	1,829.9	0.00	0.00	0.00	0.00	
8,063.6	0.00	0.00	7,810.0	361.6	1,896.6	3.00	-3.00	0.00	180.00	
10,151.6	0.00	0.00	9,898.0	361.6	1,896.6	0.00	0.00	0.00	0.00	41A-36-795 PBHL

Planning Report

Database:	USA EDM 5000 Multi Users DB	Local Co-ordinate Reference:	Well 41A-36-795
Company:	Caerus Oil & Gas	TVD Reference:	30' KB @ 8714.0usft
Project:	Garfield County, CO (UTM 12N)	MD Reference:	30' KB @ 8714.0usft
Site:	S36-T7S-R95W (36B)	North Reference:	True
Well:	41A-36-795	Survey Calculation Method:	Minimum Curvature
Wellbore:	OH		
Design:	PLAN #1		

Planned Survey									
Measured Depth (usft)	Inclination (°)	Azimuth (°)	Vertical Depth (usft)	+N/-S (usft)	+E/-W (usft)	Vertical Section (usft)	Dogleg Rate (°/100usft)	Build Rate (°/100u)	Comments / Formations
0.0	0.00	0.00	0.0	0.0	0.0	0.0	0.00	0.00	
100.0	0.00	0.00	100.0	0.0	0.0	0.0	0.00	0.00	
200.0	0.00	0.00	200.0	0.0	0.0	0.0	0.00	0.00	
250.0	0.00	0.00	250.0	0.0	0.0	0.0	0.00	0.00	Start Build 3.00
300.0	1.50	79.21	300.0	0.1	0.6	0.7	3.00	3.00	
400.0	4.50	79.21	399.8	1.1	5.8	5.9	3.00	3.00	
500.0	7.50	79.21	499.3	3.1	16.0	16.3	3.00	3.00	
600.0	10.50	79.21	598.0	6.0	31.4	32.0	3.00	3.00	
700.0	13.50	79.21	695.8	9.9	51.8	52.8	3.00	3.00	
760.8	15.32	79.21	754.7	12.7	66.7	67.9	3.00	3.00	Start 6792.0 hold at 760.8 MD
800.0	15.32	79.21	792.5	14.7	76.9	78.3	0.00	0.00	
900.0	15.32	79.21	889.0	19.6	102.8	104.7	0.00	0.00	
1,000.0	15.32	79.21	985.4	24.6	128.8	131.1	0.00	0.00	
1,100.0	15.32	79.21	1,081.9	29.5	154.8	157.5	0.00	0.00	
1,200.0	15.32	79.21	1,178.3	34.5	180.7	184.0	0.00	0.00	
1,300.0	15.32	79.21	1,274.8	39.4	206.7	210.4	0.00	0.00	
1,400.0	15.32	79.21	1,371.2	44.3	232.6	236.8	0.00	0.00	
1,500.0	15.32	79.21	1,467.6	49.3	258.6	263.3	0.00	0.00	
1,600.0	15.32	79.21	1,564.1	54.2	284.6	289.7	0.00	0.00	
1,700.0	15.32	79.21	1,660.5	59.2	310.5	316.1	0.00	0.00	
1,800.0	15.32	79.21	1,757.0	64.1	336.5	342.5	0.00	0.00	
1,900.0	15.32	79.21	1,853.4	69.1	362.4	369.0	0.00	0.00	
2,000.0	15.32	79.21	1,949.9	74.0	388.4	395.4	0.00	0.00	
2,100.0	15.32	79.21	2,046.3	79.0	414.4	421.8	0.00	0.00	
2,200.0	15.32	79.21	2,142.8	83.9	440.3	448.3	0.00	0.00	
2,300.0	15.32	79.21	2,239.2	88.9	466.3	474.7	0.00	0.00	
2,400.0	15.32	79.21	2,335.6	93.8	492.2	501.1	0.00	0.00	
2,500.0	15.32	79.21	2,432.1	98.8	518.2	527.5	0.00	0.00	
2,600.0	15.32	79.21	2,528.5	103.7	544.2	554.0	0.00	0.00	
2,700.0	15.32	79.21	2,625.0	108.7	570.1	580.4	0.00	0.00	
2,800.0	15.32	79.21	2,721.4	113.6	596.1	606.8	0.00	0.00	
2,900.0	15.32	79.21	2,817.9	118.6	622.0	633.2	0.00	0.00	
3,000.0	15.32	79.21	2,914.3	123.5	648.0	659.7	0.00	0.00	
3,100.0	15.32	79.21	3,010.8	128.5	674.0	686.1	0.00	0.00	
3,200.0	15.32	79.21	3,107.2	133.4	699.9	712.5	0.00	0.00	
3,300.0	15.32	79.21	3,203.6	138.4	725.9	739.0	0.00	0.00	
3,400.0	15.32	79.21	3,300.1	143.3	751.8	765.4	0.00	0.00	
3,500.0	15.32	79.21	3,396.5	148.3	777.8	791.8	0.00	0.00	
3,600.0	15.32	79.21	3,493.0	153.2	803.8	818.2	0.00	0.00	
3,700.0	15.32	79.21	3,589.4	158.2	829.7	844.7	0.00	0.00	
3,800.0	15.32	79.21	3,685.9	163.1	855.7	871.1	0.00	0.00	
3,900.0	15.32	79.21	3,782.3	168.1	881.6	897.5	0.00	0.00	
4,000.0	15.32	79.21	3,878.8	173.0	907.6	924.0	0.00	0.00	
4,100.0	15.32	79.21	3,975.2	178.0	933.6	950.4	0.00	0.00	
4,200.0	15.32	79.21	4,071.6	182.9	959.5	976.8	0.00	0.00	
4,300.0	15.32	79.21	4,168.1	187.9	985.5	1,003.2	0.00	0.00	
4,400.0	15.32	79.21	4,264.5	192.8	1,011.4	1,029.7	0.00	0.00	
4,500.0	15.32	79.21	4,361.0	197.8	1,037.4	1,056.1	0.00	0.00	
4,600.0	15.32	79.21	4,457.4	202.7	1,063.4	1,082.5	0.00	0.00	
4,700.0	15.32	79.21	4,553.9	207.7	1,089.3	1,108.9	0.00	0.00	
4,800.0	15.32	79.21	4,650.3	212.6	1,115.3	1,135.4	0.00	0.00	
4,900.0	15.32	79.21	4,746.8	217.6	1,141.3	1,161.8	0.00	0.00	

Planning Report

Database:	USA EDM 5000 Multi Users DB	Local Co-ordinate Reference:	Well 41A-36-795
Company:	Caerus Oil & Gas	TVD Reference:	30' KB @ 8714.0usft
Project:	Garfield County, CO (UTM 12N)	MD Reference:	30' KB @ 8714.0usft
Site:	S36-T7S-R95W (36B)	North Reference:	True
Well:	41A-36-795	Survey Calculation Method:	Minimum Curvature
Wellbore:	OH		
Design:	PLAN #1		

Planned Survey									
Measured Depth (usft)	Inclination (°)	Azimuth (°)	Vertical Depth (usft)	+N/-S (usft)	+E/-W (usft)	Vertical Section (usft)	Dogleg Rate (°/100usft)	Build Rate (°/100u)	Comments / Formations
5,000.0	15.32	79.21	4,843.2	222.5	1,167.2	1,188.2	0.00	0.00	
5,100.0	15.32	79.21	4,939.6	227.5	1,193.2	1,214.7	0.00	0.00	
5,200.0	15.32	79.21	5,036.1	232.4	1,219.1	1,241.1	0.00	0.00	
5,300.0	15.32	79.21	5,132.5	237.4	1,245.1	1,267.5	0.00	0.00	
5,400.0	15.32	79.21	5,229.0	242.3	1,271.1	1,293.9	0.00	0.00	
5,500.0	15.32	79.21	5,325.4	247.3	1,297.0	1,320.4	0.00	0.00	
5,600.0	15.32	79.21	5,421.9	252.2	1,323.0	1,346.8	0.00	0.00	
5,700.0	15.32	79.21	5,518.3	257.1	1,348.9	1,373.2	0.00	0.00	
5,800.0	15.32	79.21	5,614.8	262.1	1,374.9	1,399.7	0.00	0.00	
5,900.0	15.32	79.21	5,711.2	267.0	1,400.9	1,426.1	0.00	0.00	
6,000.0	15.32	79.21	5,807.6	272.0	1,426.8	1,452.5	0.00	0.00	
6,100.0	15.32	79.21	5,904.1	276.9	1,452.8	1,478.9	0.00	0.00	
6,200.0	15.32	79.21	6,000.5	281.9	1,478.7	1,505.4	0.00	0.00	
6,300.0	15.32	79.21	6,097.0	286.8	1,504.7	1,531.8	0.00	0.00	
6,400.0	15.32	79.21	6,193.4	291.8	1,530.7	1,558.2	0.00	0.00	
6,500.0	15.32	79.21	6,289.9	296.7	1,556.6	1,584.6	0.00	0.00	
6,600.0	15.32	79.21	6,386.3	301.7	1,582.6	1,611.1	0.00	0.00	
6,700.0	15.32	79.21	6,482.8	306.6	1,608.5	1,637.5	0.00	0.00	
6,800.0	15.32	79.21	6,579.2	311.6	1,634.5	1,663.9	0.00	0.00	
6,900.0	15.32	79.21	6,675.6	316.5	1,660.5	1,690.4	0.00	0.00	
6,960.5	15.32	79.21	6,734.0	319.5	1,676.2	1,706.3	0.00	0.00	OHIO_CREEK
7,000.0	15.32	79.21	6,772.1	321.5	1,686.4	1,716.8	0.00	0.00	
7,100.0	15.32	79.21	6,868.5	326.4	1,712.4	1,743.2	0.00	0.00	
7,200.0	15.32	79.21	6,965.0	331.4	1,738.3	1,769.6	0.00	0.00	
7,300.0	15.32	79.21	7,061.4	336.3	1,764.3	1,796.1	0.00	0.00	
7,400.0	15.32	79.21	7,157.9	341.3	1,790.3	1,822.5	0.00	0.00	
7,470.6	15.32	79.21	7,226.0	344.8	1,808.6	1,841.2	0.00	0.00	WILLIAMS_FORK
7,500.0	15.32	79.21	7,254.3	346.2	1,816.2	1,848.9	0.00	0.00	
7,552.8	15.32	79.21	7,305.3	348.8	1,829.9	1,862.9	0.00	0.00	Start Drop -3.00
7,600.0	13.91	79.21	7,350.9	351.1	1,841.6	1,874.8	3.00	-3.00	
7,700.0	10.91	79.21	7,448.6	355.1	1,862.7	1,896.3	3.00	-3.00	
7,800.0	7.91	79.21	7,547.2	358.2	1,878.8	1,912.6	3.00	-3.00	
7,900.0	4.91	79.21	7,646.6	360.2	1,889.8	1,923.8	3.00	-3.00	
8,000.0	1.91	79.21	7,746.4	361.4	1,895.6	1,929.7	3.00	-3.00	
8,063.6	0.00	0.00	7,810.0	361.6	1,896.6	1,930.8	3.00	-3.00	Start 2088.0 hold at 8063.6 MD
8,100.0	0.00	0.00	7,846.4	361.6	1,896.6	1,930.8	0.00	0.00	
8,163.6	0.00	0.00	7,910.0	361.6	1,896.6	1,930.8	0.00	0.00	TOP_GAS
8,200.0	0.00	0.00	7,946.4	361.6	1,896.6	1,930.8	0.00	0.00	
8,300.0	0.00	0.00	8,046.4	361.6	1,896.6	1,930.8	0.00	0.00	
8,400.0	0.00	0.00	8,146.4	361.6	1,896.6	1,930.8	0.00	0.00	
8,500.0	0.00	0.00	8,246.4	361.6	1,896.6	1,930.8	0.00	0.00	
8,600.0	0.00	0.00	8,346.4	361.6	1,896.6	1,930.8	0.00	0.00	
8,700.0	0.00	0.00	8,446.4	361.6	1,896.6	1,930.8	0.00	0.00	
8,800.0	0.00	0.00	8,546.4	361.6	1,896.6	1,930.8	0.00	0.00	
8,900.0	0.00	0.00	8,646.4	361.6	1,896.6	1,930.8	0.00	0.00	
9,000.0	0.00	0.00	8,746.4	361.6	1,896.6	1,930.8	0.00	0.00	
9,100.0	0.00	0.00	8,846.4	361.6	1,896.6	1,930.8	0.00	0.00	
9,200.0	0.00	0.00	8,946.4	361.6	1,896.6	1,930.8	0.00	0.00	
9,300.0	0.00	0.00	9,046.4	361.6	1,896.6	1,930.8	0.00	0.00	
9,400.0	0.00	0.00	9,146.4	361.6	1,896.6	1,930.8	0.00	0.00	
9,500.0	0.00	0.00	9,246.4	361.6	1,896.6	1,930.8	0.00	0.00	
9,600.0	0.00	0.00	9,346.4	361.6	1,896.6	1,930.8	0.00	0.00	

Planning Report

Database:	USA EDM 5000 Multi Users DB	Local Co-ordinate Reference:	Well 41A-36-795
Company:	Caerus Oil & Gas	TVD Reference:	30' KB @ 8714.0usft
Project:	Garfield County, CO (UTM 12N)	MD Reference:	30' KB @ 8714.0usft
Site:	S36-T7S-R95W (36B)	North Reference:	True
Well:	41A-36-795	Survey Calculation Method:	Minimum Curvature
Wellbore:	OH		
Design:	PLAN #1		

Planned Survey

Measured Depth (usft)	Inclination (°)	Azimuth (°)	Vertical Depth (usft)	+N/-S (usft)	+E/-W (usft)	Vertical Section (usft)	Dogleg Rate (°/100usft)	Build Rate (°/100u)	Comments / Formations
9,700.0	0.00	0.00	9,446.4	361.6	1,896.6	1,930.8	0.00	0.00	
9,751.6	0.00	0.00	9,498.0	361.6	1,896.6	1,930.8	0.00	0.00	CAMEO
9,800.0	0.00	0.00	9,546.4	361.6	1,896.6	1,930.8	0.00	0.00	
9,900.0	0.00	0.00	9,646.4	361.6	1,896.6	1,930.8	0.00	0.00	
10,000.0	0.00	0.00	9,746.4	361.6	1,896.6	1,930.8	0.00	0.00	
10,001.6	0.00	0.00	9,748.0	361.6	1,896.6	1,930.8	0.00	0.00	ROLLINS
10,100.0	0.00	0.00	9,846.4	361.6	1,896.6	1,930.8	0.00	0.00	
10,151.6	0.00	0.00	9,898.0	361.6	1,896.6	1,930.8	0.00	0.00	TD at 10151.6 - TD

Targets

Target Name	Dip Angle (°)	Dip Dir. (°)	TVD (usft)	+N/-S (usft)	+E/-W (usft)	Northing (usft)	Easting (usft)	Latitude	Longitude
41A-36-795 PBHL - hit/miss target - Shape - plan hits target center - Circle (radius 50.0)	0.00	0.00	9,898.0	361.6	1,896.6	14,321,975.30	2,505,896.20	39.399194	-107.936611

Formations

Measured Depth (usft)	Vertical Depth (usft)	Name	Lithology	Dip (°)	Dip Direction (°)
6,960.5	6,734.0	OHIO_CREEK			
7,470.6	7,226.0	WILLIAMS_FORK			
8,163.6	7,910.0	TOP_GAS			
9,751.6	9,498.0	CAMEO			
10,001.6	9,748.0	ROLLINS			
10,151.6	9,898.0	TD			

Plan Annotations

Measured Depth (usft)	Vertical Depth (usft)	+N/-S (usft)	+E/-W (usft)	Comment
250.0	250.0	0.0	0.0	Start Build 3.00
760.8	754.7	12.7	66.7	Start 6792.0 hold at 760.8 MD
7,552.8	7,305.3	348.8	1,829.9	Start Drop -3.00
8,063.6	7,810.0	361.6	1,896.6	Start 2088.0 hold at 8063.6 MD
10,151.6	9,898.0	361.6	1,896.6	TD at 10151.6