



# TEMPERATURE LOG

## CCL

Company **WPX ENERGY**

Well  
FEDERAL RU 542 - 8

Field RULISON

County **GARFIELD** State **COLORADO**

Location:	API #:	05 - 045 - 22796	Other Services
-----------	--------	------------------	----------------

LAT: 39.4654511  
LONG: -107.800932

SEC	8	TWP	7s	RGE	93w
-----	---	-----	----	-----	-----

Permanent Datum	G.L.	Elevation	7736'	K.B. 7760'
Log Measured From	K.B.	Ft. Above PD	24'	D.F.
Drilling Measured From	K.B.			G.L. 7736'

Date	01 - 20 - 2016
------	----------------

Run Number	On
------------	----

Depth Driller	10/
---------------	-----

Present Depth Driller	N
-----------------------	---

Depth Logger	10/
--------------	-----

Bottom Logged Interval	10/
------------------------	-----

Top Log Interval	SURF
------------------	------

Fluid Level	SURF
100%	100%
90%	90%
80%	80%
70%	70%
60%	60%
50%	50%
40%	40%
30%	30%
20%	20%
10%	10%
0%	0%

Type Fluid	WA
------------	----

Max. Recorded Temp.	180.7
---------------------	-------

Estimated Cement 1 op	31
-----------------------	----

Equipment Number	2
------------------	---

LOCALITY	GRAIN

Recruited by	ING
--------------	-----

Witnessed by	MR. DE
Deborah Deard	

Run Number	Borehole Record		Casing Record	
	Bit From	To	Size	Weight From To
1	0	10	10	10
2	10	20	20	20
3	20	30	30	30
4	30	40	40	40
5	40	50	50	50
6	50	60	60	60
7	60	70	70	70
8	70	80	80	80
9	80	90	90	90
10	90	100	100	100

<<< Fold Here >>>

All interpretations are opinions based on inferences from electrical or other measurements and we cannot and do not guarantee the accuracy or correctness of any interpretation, and we shall not, except in the case of gross or willful negligence on our part, be liable or responsible for any loss, costs, damages, or expenses incurred or sustained by anyone resulting from any interpretation made by any of our officers, agents or employees. These interpretations are also subject to our general terms and conditions set out in our current Price Schedule.

## WARRIOR 7.0 SOFTWARE - Comments

**NOTE: LOG WAS DEPTH CORRELATED USING KB OF 24'**

**SHORT JOINT: 7026' TO 7049'**

MAIN PASS 5" = 100'  
CSG PSI = STATIC

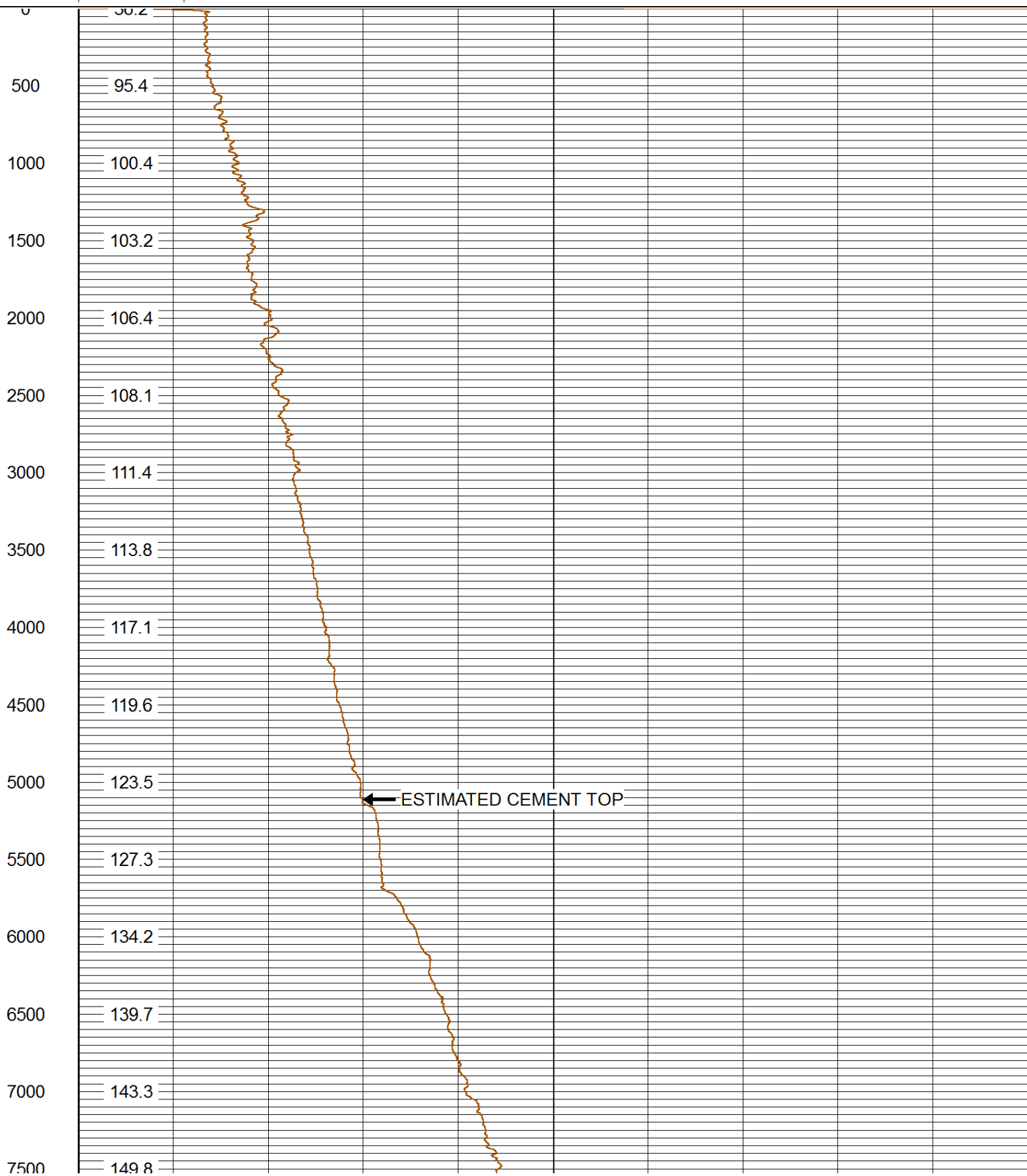


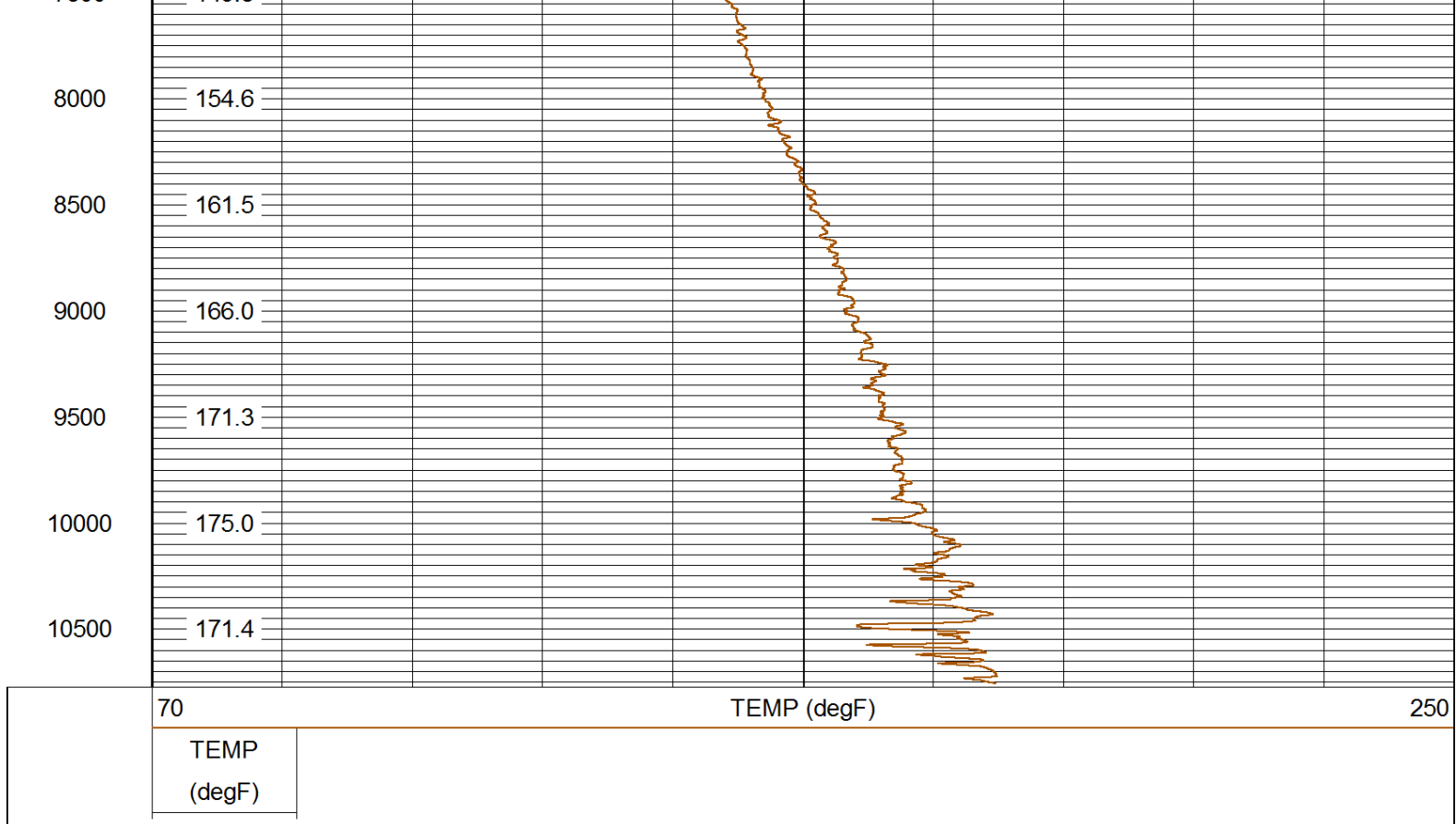
# MAIN PASS QUICKLOOK

Database File: 012015\_wpxenergy\_fed\_ru\_542\_8.db  
 Dataset Pathname: main/pass2  
 Presentation Format: rmtemp\_q  
 Dataset Creation: Wed Jan 20 07:56:50 2016 by Calc SCH 120430  
 Charted by: Depth in Feet scaled 1:10000

70 TEMP (degF) 250

TEMP  
(degF)





Company	WPX ENERGY
Well	FEDERAL RU 542 - 8
Field	RULISON
County	GARFIELD
State	COLORADO