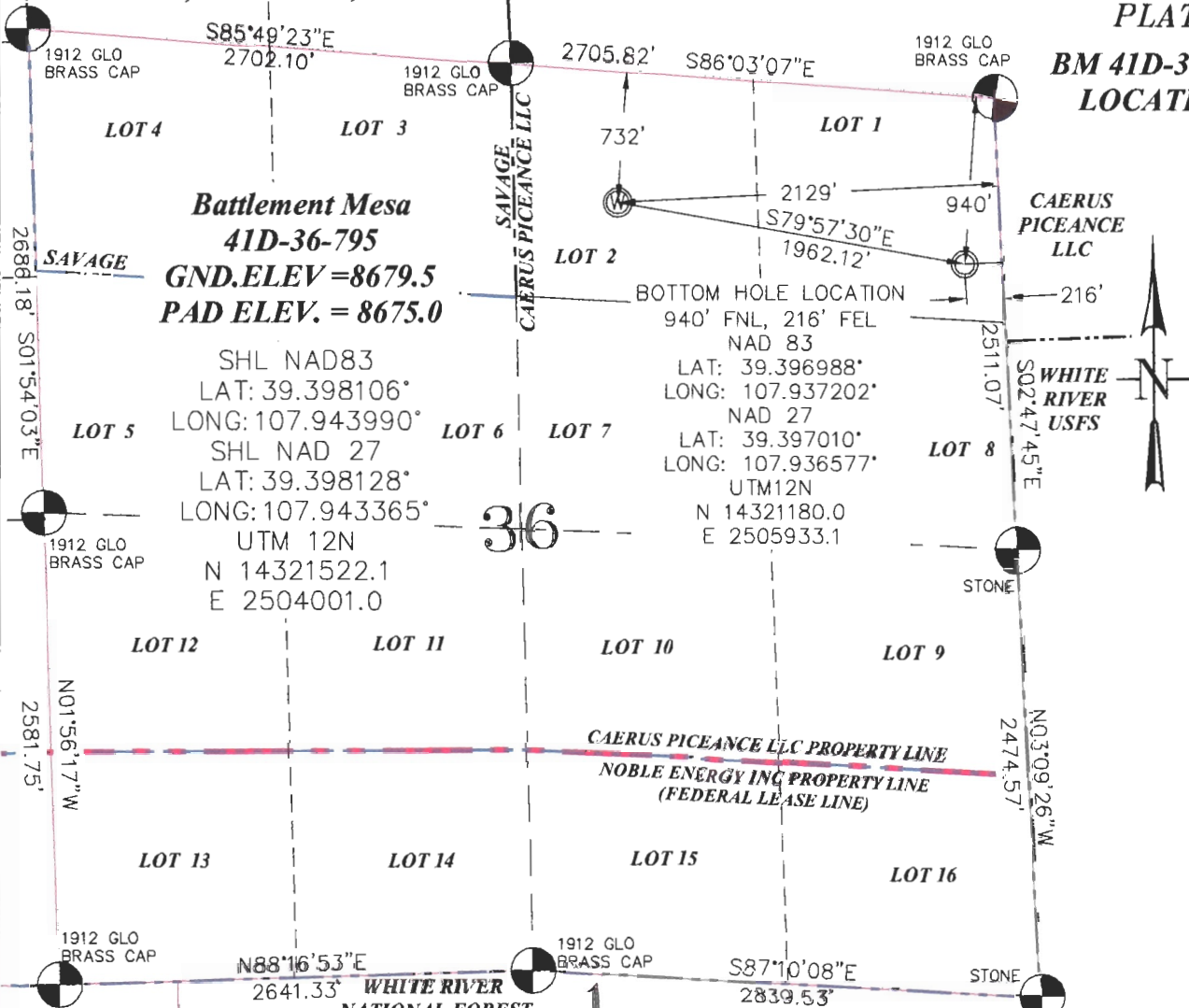


SEC. 36, T. 7 S., R. 95 W. OF THE 6TH P.M.

PLAT 1
BM 41D-36-795
LOCATION



Battlement Mesa
41D-36-795
GND.ELEV = 8679.5
PAD ELEV. = 8675.0

SHL NAD83
 LAT: 39.398106°
 LONG: 107.943990°
 SHL NAD 27
 LAT: 39.398128°
 LONG: 107.943365°
 UTM 12N
 N 14321522.1
 E 2504001.0

BOTTOM HOLE LOCATION
 940' FNL, 216' FEL
 NAD 83
 LAT: 39.396988°
 LONG: 107.937202°
 NAD 27
 LAT: 39.397010°
 LONG: 107.936577°
 UTM12N
 N 14321180.0
 E 2505933.1

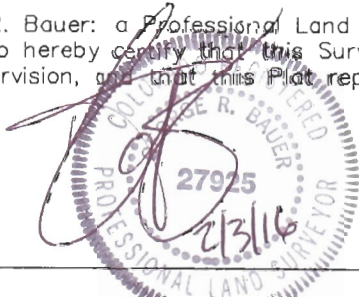
THIS WELL LOCATION PLAT WAS PREPARED FOR CAERUS PICEANCE LLC TO LOCATE THE BATTLEMENT MESA 41D-36-795 WELL, 732 FEET FROM THE NORTH LINE OF SAID SECTION AND 2129 FEET FROM THE EAST LINE OF LOT 2 (NW1/4NE1/4) OF SECTION 36, T. 7 S., R. 95 W. OF THE 6TH P.M. GARFIELD COUNTY, COLORADO.

REFERENCE NOTES

- 1) T. 7 S., R. 95 W., 6TH P.M. GLO PLAT.
- 2) U.S.G.S. QUAD: PARACHUTE, CO
- 3) ELEVATIONS BASED ON N.A.V.D. 1988 LIDAR BASED CONTROL PT CP MON 8
- 4) LATITUDES AND LONGITUDES ARE BASED ON NAD 83, COLORADO CENTRAL ZONE.
- 5) GPS OPERATOR ROBERT WOOD, OBSERVED A PDOP OF 1.9.
- 6) ALL GPS OBSERVATIONS ARE IN COMPLIANCE WITH COGCC RULE NO. 215.
- 7) SURFACE AND BOTTOM HOLE LOCATIONS ARE MEASURED 90° FROM SECTION LINES.

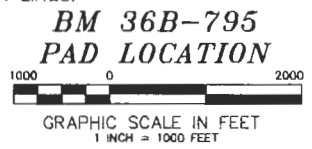
SURVEYOR'S CERTIFICATE

I, George R. Bauer: a Professional Land Surveyor in the State of Colorado do hereby certify that this Survey was made under my direct supervision, and that this Plat represents said Survey.



-LEGEND-

- FIELD SURVEYED SECTION CORNER LOCATIONS
- FIELD SURVEYED WELL SHL LOCATION
- CALCULATED BOTTOM HOLE LOCATION



WELL LOCATION PLAT

CONSTRUCTION SURVEYS, INC. 0012 SUNRISE BLD. SILT, CO 81652 (970)876-5753	
SURVEY BY: REW 12/10/15	PDOP: 1.9
DRAWN BY: REW 02/02/16	DWG: CAERUS\BM36B-795PLAT_1
REVISED:	