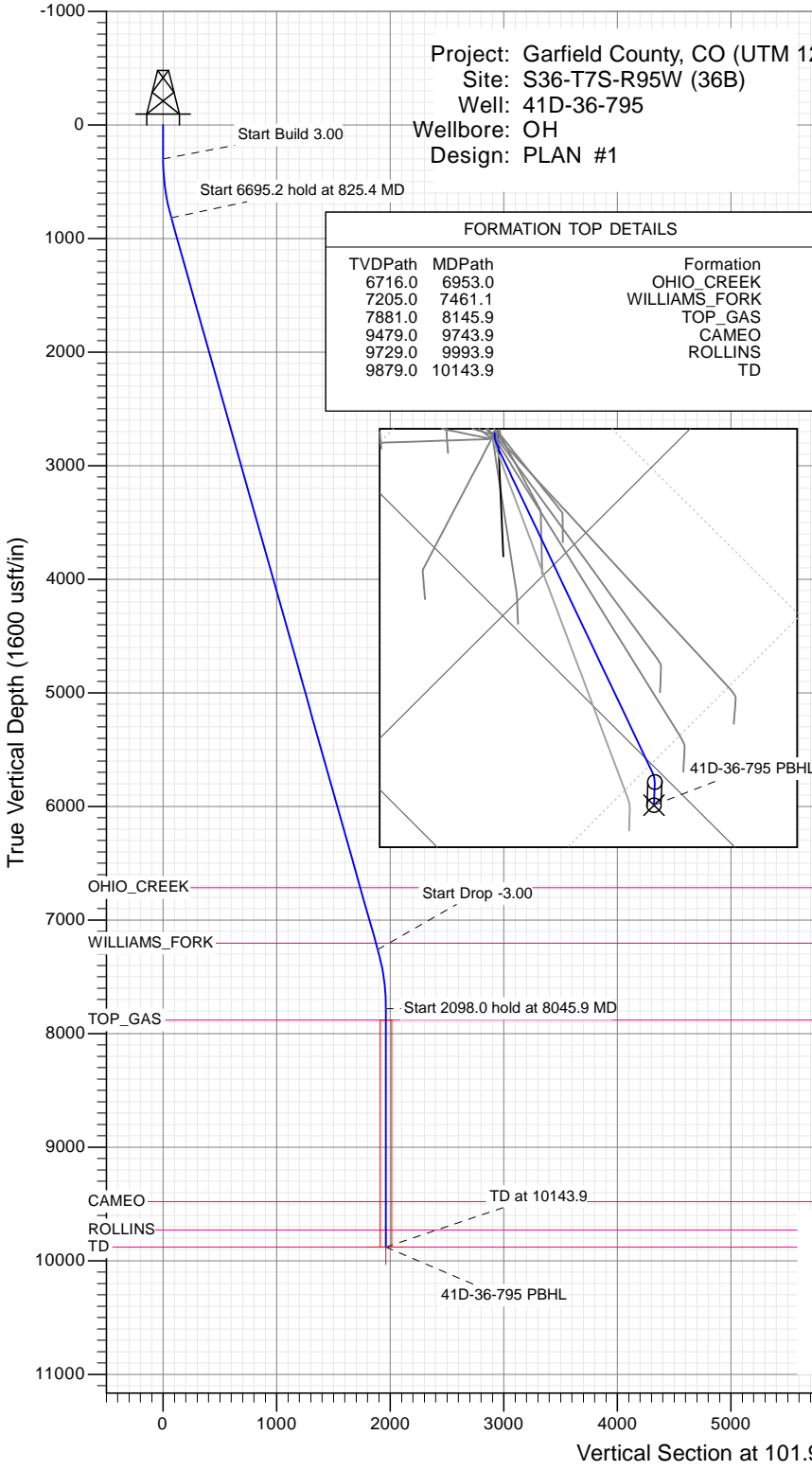




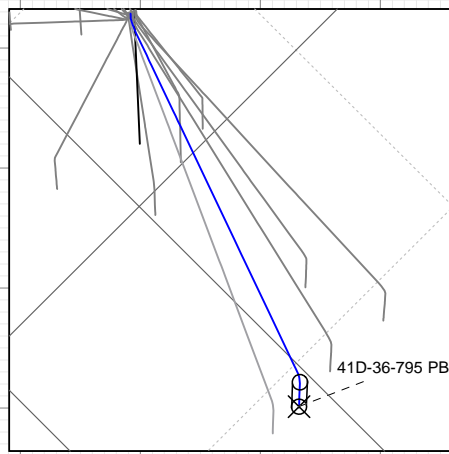
SECTION DETAILS

Sec	MD	Inc	Azi	TVD	+N/-S	+E/-W	Dleg	TFace	VSect	Target
1	0.0	0.00	0.00	0.0	0.0	0.0	0.00	0.00	0.0	
2	300.0	0.00	0.00	300.0	0.0	0.0	0.00	0.00	0.0	
3	825.4	15.76	101.98	818.8	-14.9	70.2	3.00	101.98	71.8	
4	7520.6	15.76	101.98	7262.2	-392.4	1849.2	0.00	0.00	1890.4	
5	8045.9	0.00	0.00	7781.0	-407.4	1919.4	3.00	180.00	1962.2	
6	10143.9	0.00	0.00	9879.0	-407.4	1919.4	0.00	0.00	1962.2	41D-36-795 PBHL



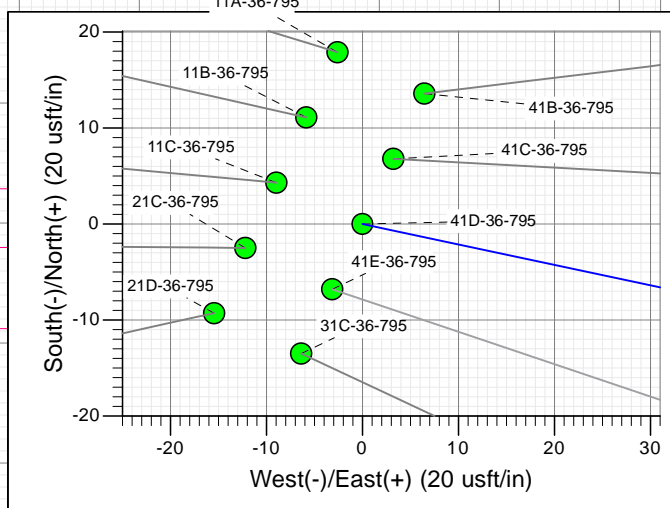
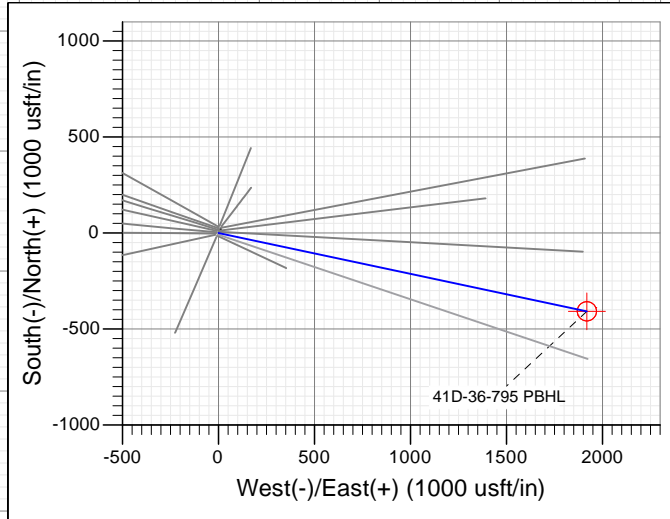
FORMATION TOP DETAILS

TVDPPath	MDPath	Formation
6716.0	6953.0	OHIO_CREEK
7205.0	7461.1	WILLIAMS_FORK
7881.0	8145.9	TOP_GAS
9479.0	9743.9	CAMEO
9729.0	9993.9	ROLLINS
9879.0	10143.9	TD



PLAN #1
41D-36-795
15XXX LR
30' KB @ 8714.0usft
Ground Level @ 8684.0
NAD 1927 - Western US
Well 41D-36-795, True North

Type	Target	Target	Target	Target	Target	Target
TD	No Target (Freehand)	TD	Origin Type	N/S	E/W	From TVD
Name	41D-36-795 PBHL	TD	Slot	0.0	0.0	0.0
		9879.0		+N/-S	+E/-W	Latitude
				-407.4	1919.4	39.397010
						Longitude
						-107.936577



T M
 Azimuths to True North
 Magnetic North: 9.42°
 Magnetic Field
 Strength: 51880.5snT
 Dip Angle: 65.62°
 Date: 12/17/2015
 Model: HDGM

CASING DETAILS

No casing data is available



WELL DETAILS: 41D-36-795

+N/-S	+E/-W	Northing	Ground Level:	8684.0	Latitude	Longitude
0.0	0.0	14321522.10	Easting	2504001.00	39.398128	-107.943365

Planning Report

Database: USA EDM 5000 Multi Users DB	Local Co-ordinate Reference: Well 41D-36-795
Company: Caerus Oil & Gas	TVD Reference: 30' KB @ 8714.0usft
Project: Garfield County, CO (UTM 12N)	MD Reference: 30' KB @ 8714.0usft
Site: S36-T7S-R95W (36B)	North Reference: True
Well: 41D-36-795	Survey Calculation Method: Minimum Curvature
Wellbore: OH	
Design: PLAN #1	

Project Garfield County, CO (UTM 12N)			
Map System: Universal Transverse Mercator (US Survey Feet)	System Datum: Mean Sea Level		
Geo Datum: NAD 1927 - Western US			
Map Zone: Zone 12N (114 W to 108 W)			

Site S36-T7S-R95W (36B)			
Site Position:	Northing: 14,321,539.90 usft	Latitude: 39.398177	
From: Map	Easting: 2,503,997.80 usft	Longitude: -107.943374	
Position Uncertainty: 0.0 usft	Slot Radius: 13-3/16"	Grid Convergence: 1.94 °	

Well 41D-36-795			
Well Position	+N/-S 0.0 usft	Northing: 14,321,522.10 usft	Latitude: 39.398128
	+E/-W 0.0 usft	Easting: 2,504,001.00 usft	Longitude: -107.943365
Position Uncertainty	0.0 usft	Wellhead Elevation: 0.0 usft	Ground Level: 8,684.0 usft

Wellbore OH					
Magnetics	Model Name	Sample Date	Declination (°)	Dip Angle (°)	Field Strength (nT)
	HDGM	12/17/2015	9.42	65.62	51,881

Design PLAN #1				
Audit Notes:				
Version:	Phase: PLAN	Tie On Depth: 0.0		
Vertical Section:	Depth From (TVD) (usft)	+N/-S (usft)	+E/-W (usft)	Direction (°)
	0.0	0.0	0.0	101.98

Plan Sections										
Measured Depth (usft)	Inclination (°)	Azimuth (°)	Vertical Depth (usft)	+N/-S (usft)	+E/-W (usft)	Dogleg Rate (°/100usft)	Build Rate (°/100usft)	Turn Rate (°/100usft)	TFO (°)	Target
0.0	0.00	0.00	0.0	0.0	0.0	0.00	0.00	0.00	0.00	
300.0	0.00	0.00	300.0	0.0	0.0	0.00	0.00	0.00	0.00	
825.4	15.76	101.98	818.8	-14.9	70.2	3.00	3.00	0.00	101.98	
7,520.6	15.76	101.98	7,262.2	-392.4	1,849.2	0.00	0.00	0.00	0.00	
8,045.9	0.00	0.00	7,781.0	-407.4	1,919.4	3.00	-3.00	0.00	180.00	
10,143.9	0.00	0.00	9,879.0	-407.4	1,919.4	0.00	0.00	0.00	0.00	41D-36-795 PBHL

Planning Report

Database:	USA EDM 5000 Multi Users DB	Local Co-ordinate Reference:	Well 41D-36-795
Company:	Caerus Oil & Gas	TVD Reference:	30' KB @ 8714.0usft
Project:	Garfield County, CO (UTM 12N)	MD Reference:	30' KB @ 8714.0usft
Site:	S36-T7S-R95W (36B)	North Reference:	True
Well:	41D-36-795	Survey Calculation Method:	Minimum Curvature
Wellbore:	OH		
Design:	PLAN #1		

Planned Survey									
Measured Depth (usft)	Inclination (°)	Azimuth (°)	Vertical Depth (usft)	+N/-S (usft)	+E/-W (usft)	Vertical Section (usft)	Dogleg Rate (°/100usft)	Build Rate (°/100u)	Comments / Formations
0.0	0.00	0.00	0.0	0.0	0.0	0.0	0.00	0.00	
100.0	0.00	0.00	100.0	0.0	0.0	0.0	0.00	0.00	
200.0	0.00	0.00	200.0	0.0	0.0	0.0	0.00	0.00	
300.0	0.00	0.00	300.0	0.0	0.0	0.0	0.00	0.00	Start Build 3.00
400.0	3.00	101.98	400.0	-0.5	2.6	2.6	3.00	3.00	
500.0	6.00	101.98	499.6	-2.2	10.2	10.5	3.00	3.00	
600.0	9.00	101.98	598.8	-4.9	23.0	23.5	3.00	3.00	
700.0	12.00	101.98	697.1	-8.7	40.8	41.7	3.00	3.00	
800.0	15.00	101.98	794.3	-13.5	63.7	65.1	3.00	3.00	
825.4	15.76	101.98	818.8	-14.9	70.2	71.8	3.00	3.00	Start 6695.2 hold at 825.4 MD
900.0	15.76	101.98	890.6	-19.1	90.1	92.1	0.00	0.00	
1,000.0	15.76	101.98	986.8	-24.8	116.6	119.2	0.00	0.00	
1,100.0	15.76	101.98	1,083.1	-30.4	143.2	146.4	0.00	0.00	
1,200.0	15.76	101.98	1,179.3	-36.0	169.8	173.6	0.00	0.00	
1,300.0	15.76	101.98	1,275.6	-41.7	196.4	200.7	0.00	0.00	
1,400.0	15.76	101.98	1,371.8	-47.3	222.9	227.9	0.00	0.00	
1,500.0	15.76	101.98	1,468.0	-52.9	249.5	255.0	0.00	0.00	
1,600.0	15.76	101.98	1,564.3	-58.6	276.1	282.2	0.00	0.00	
1,700.0	15.76	101.98	1,660.5	-64.2	302.6	309.4	0.00	0.00	
1,800.0	15.76	101.98	1,756.8	-69.9	329.2	336.5	0.00	0.00	
1,900.0	15.76	101.98	1,853.0	-75.5	355.8	363.7	0.00	0.00	
2,000.0	15.76	101.98	1,949.2	-81.1	382.3	390.9	0.00	0.00	
2,100.0	15.76	101.98	2,045.5	-86.8	408.9	418.0	0.00	0.00	
2,200.0	15.76	101.98	2,141.7	-92.4	435.5	445.2	0.00	0.00	
2,300.0	15.76	101.98	2,238.0	-98.1	462.1	472.3	0.00	0.00	
2,400.0	15.76	101.98	2,334.2	-103.7	488.6	499.5	0.00	0.00	
2,500.0	15.76	101.98	2,430.4	-109.3	515.2	526.7	0.00	0.00	
2,600.0	15.76	101.98	2,526.7	-115.0	541.8	553.8	0.00	0.00	
2,700.0	15.76	101.98	2,622.9	-120.6	568.3	581.0	0.00	0.00	
2,800.0	15.76	101.98	2,719.2	-126.3	594.9	608.2	0.00	0.00	
2,900.0	15.76	101.98	2,815.4	-131.9	621.5	635.3	0.00	0.00	
3,000.0	15.76	101.98	2,911.6	-137.5	648.0	662.5	0.00	0.00	
3,100.0	15.76	101.98	3,007.9	-143.2	674.6	689.6	0.00	0.00	
3,200.0	15.76	101.98	3,104.1	-148.8	701.2	716.8	0.00	0.00	
3,300.0	15.76	101.98	3,200.4	-154.5	727.8	744.0	0.00	0.00	
3,400.0	15.76	101.98	3,296.6	-160.1	754.3	771.1	0.00	0.00	
3,500.0	15.76	101.98	3,392.8	-165.7	780.9	798.3	0.00	0.00	
3,600.0	15.76	101.98	3,489.1	-171.4	807.5	825.4	0.00	0.00	
3,700.0	15.76	101.98	3,585.3	-177.0	834.0	852.6	0.00	0.00	
3,800.0	15.76	101.98	3,681.6	-182.6	860.6	879.8	0.00	0.00	
3,900.0	15.76	101.98	3,777.8	-188.3	887.2	906.9	0.00	0.00	
4,000.0	15.76	101.98	3,874.0	-193.9	913.7	934.1	0.00	0.00	
4,100.0	15.76	101.98	3,970.3	-199.6	940.3	961.3	0.00	0.00	
4,200.0	15.76	101.98	4,066.5	-205.2	966.9	988.4	0.00	0.00	
4,300.0	15.76	101.98	4,162.8	-210.8	993.5	1,015.6	0.00	0.00	
4,400.0	15.76	101.98	4,259.0	-216.5	1,020.0	1,042.7	0.00	0.00	
4,500.0	15.76	101.98	4,355.2	-222.1	1,046.6	1,069.9	0.00	0.00	
4,600.0	15.76	101.98	4,451.5	-227.8	1,073.2	1,097.1	0.00	0.00	
4,700.0	15.76	101.98	4,547.7	-233.4	1,099.7	1,124.2	0.00	0.00	
4,800.0	15.76	101.98	4,644.0	-239.0	1,126.3	1,151.4	0.00	0.00	
4,900.0	15.76	101.98	4,740.2	-244.7	1,152.9	1,178.6	0.00	0.00	
5,000.0	15.76	101.98	4,836.4	-250.3	1,179.4	1,205.7	0.00	0.00	

Planning Report

Database:	USA EDM 5000 Multi Users DB	Local Co-ordinate Reference:	Well 41D-36-795
Company:	Caerus Oil & Gas	TVD Reference:	30' KB @ 8714.0usft
Project:	Garfield County, CO (UTM 12N)	MD Reference:	30' KB @ 8714.0usft
Site:	S36-T7S-R95W (36B)	North Reference:	True
Well:	41D-36-795	Survey Calculation Method:	Minimum Curvature
Wellbore:	OH		
Design:	PLAN #1		

Planned Survey									
Measured Depth (usft)	Inclination (°)	Azimuth (°)	Vertical Depth (usft)	+N/-S (usft)	+E/-W (usft)	Vertical Section (usft)	Dogleg Rate (°/100usft)	Build Rate (°/100u)	Comments / Formations
5,100.0	15.76	101.98	4,932.7	-256.0	1,206.0	1,232.9	0.00	0.00	
5,200.0	15.76	101.98	5,028.9	-261.6	1,232.6	1,260.0	0.00	0.00	
5,300.0	15.76	101.98	5,125.2	-267.2	1,259.2	1,287.2	0.00	0.00	
5,400.0	15.76	101.98	5,221.4	-272.9	1,285.7	1,314.4	0.00	0.00	
5,500.0	15.76	101.98	5,317.6	-278.5	1,312.3	1,341.5	0.00	0.00	
5,600.0	15.76	101.98	5,413.9	-284.1	1,338.9	1,368.7	0.00	0.00	
5,700.0	15.76	101.98	5,510.1	-289.8	1,365.4	1,395.8	0.00	0.00	
5,800.0	15.76	101.98	5,606.4	-295.4	1,392.0	1,423.0	0.00	0.00	
5,900.0	15.76	101.98	5,702.6	-301.1	1,418.6	1,450.2	0.00	0.00	
6,000.0	15.76	101.98	5,798.8	-306.7	1,445.1	1,477.3	0.00	0.00	
6,100.0	15.76	101.98	5,895.1	-312.3	1,471.7	1,504.5	0.00	0.00	
6,200.0	15.76	101.98	5,991.3	-318.0	1,498.3	1,531.7	0.00	0.00	
6,300.0	15.76	101.98	6,087.6	-323.6	1,524.9	1,558.8	0.00	0.00	
6,400.0	15.76	101.98	6,183.8	-329.3	1,551.4	1,586.0	0.00	0.00	
6,500.0	15.76	101.98	6,280.0	-334.9	1,578.0	1,613.1	0.00	0.00	
6,600.0	15.76	101.98	6,376.3	-340.5	1,604.6	1,640.3	0.00	0.00	
6,700.0	15.76	101.98	6,472.5	-346.2	1,631.1	1,667.5	0.00	0.00	
6,800.0	15.76	101.98	6,568.8	-351.8	1,657.7	1,694.6	0.00	0.00	
6,900.0	15.76	101.98	6,665.0	-357.5	1,684.3	1,721.8	0.00	0.00	
6,953.0	15.76	101.98	6,716.0	-360.4	1,698.4	1,736.2	0.00	0.00	OHIO_CREEK
7,000.0	15.76	101.98	6,761.2	-363.1	1,710.8	1,749.0	0.00	0.00	
7,100.0	15.76	101.98	6,857.5	-368.7	1,737.4	1,776.1	0.00	0.00	
7,200.0	15.76	101.98	6,953.7	-374.4	1,764.0	1,803.3	0.00	0.00	
7,300.0	15.76	101.98	7,050.0	-380.0	1,790.6	1,830.4	0.00	0.00	
7,400.0	15.76	101.98	7,146.2	-385.6	1,817.1	1,857.6	0.00	0.00	
7,461.1	15.76	101.98	7,205.0	-389.1	1,833.4	1,874.2	0.00	0.00	WILLIAMS_FORK
7,500.0	15.76	101.98	7,242.4	-391.3	1,843.7	1,884.8	0.00	0.00	
7,520.6	15.76	101.98	7,262.2	-392.4	1,849.2	1,890.4	0.00	0.00	Start Drop -3.00
7,600.0	13.38	101.98	7,339.1	-396.6	1,868.7	1,910.3	3.00	-3.00	
7,700.0	10.38	101.98	7,437.0	-400.9	1,888.8	1,930.9	3.00	-3.00	
7,800.0	7.38	101.98	7,535.8	-404.1	1,903.9	1,946.3	3.00	-3.00	
7,900.0	4.38	101.98	7,635.2	-406.2	1,914.0	1,956.6	3.00	-3.00	
8,000.0	1.38	101.98	7,735.1	-407.2	1,918.9	1,961.6	3.00	-3.00	
8,045.9	0.00	0.00	7,781.0	-407.4	1,919.4	1,962.2	3.00	-3.00	Start 2098.0 hold at 8045.9 MD
8,100.0	0.00	0.00	7,835.1	-407.4	1,919.4	1,962.2	0.00	0.00	
8,145.9	0.00	0.00	7,881.0	-407.4	1,919.4	1,962.2	0.00	0.00	TOP_GAS
8,200.0	0.00	0.00	7,935.1	-407.4	1,919.4	1,962.2	0.00	0.00	
8,300.0	0.00	0.00	8,035.1	-407.4	1,919.4	1,962.2	0.00	0.00	
8,400.0	0.00	0.00	8,135.1	-407.4	1,919.4	1,962.2	0.00	0.00	
8,500.0	0.00	0.00	8,235.1	-407.4	1,919.4	1,962.2	0.00	0.00	
8,600.0	0.00	0.00	8,335.1	-407.4	1,919.4	1,962.2	0.00	0.00	
8,700.0	0.00	0.00	8,435.1	-407.4	1,919.4	1,962.2	0.00	0.00	
8,800.0	0.00	0.00	8,535.1	-407.4	1,919.4	1,962.2	0.00	0.00	
8,900.0	0.00	0.00	8,635.1	-407.4	1,919.4	1,962.2	0.00	0.00	
9,000.0	0.00	0.00	8,735.1	-407.4	1,919.4	1,962.2	0.00	0.00	
9,100.0	0.00	0.00	8,835.1	-407.4	1,919.4	1,962.2	0.00	0.00	
9,200.0	0.00	0.00	8,935.1	-407.4	1,919.4	1,962.2	0.00	0.00	
9,300.0	0.00	0.00	9,035.1	-407.4	1,919.4	1,962.2	0.00	0.00	
9,400.0	0.00	0.00	9,135.1	-407.4	1,919.4	1,962.2	0.00	0.00	
9,500.0	0.00	0.00	9,235.1	-407.4	1,919.4	1,962.2	0.00	0.00	
9,600.0	0.00	0.00	9,335.1	-407.4	1,919.4	1,962.2	0.00	0.00	
9,700.0	0.00	0.00	9,435.1	-407.4	1,919.4	1,962.2	0.00	0.00	

Planning Report

Database:	USA EDM 5000 Multi Users DB	Local Co-ordinate Reference:	Well 41D-36-795
Company:	Caerus Oil & Gas	TVD Reference:	30' KB @ 8714.0usft
Project:	Garfield County, CO (UTM 12N)	MD Reference:	30' KB @ 8714.0usft
Site:	S36-T7S-R95W (36B)	North Reference:	True
Well:	41D-36-795	Survey Calculation Method:	Minimum Curvature
Wellbore:	OH		
Design:	PLAN #1		

Planned Survey									
Measured Depth (usft)	Inclination (°)	Azimuth (°)	Vertical Depth (usft)	+N/-S (usft)	+E/-W (usft)	Vertical Section (usft)	Dogleg Rate (°/100usft)	Build Rate (°/100u)	Comments / Formations
9,743.9	0.00	0.00	9,479.0	-407.4	1,919.4	1,962.2	0.00	0.00	CAMEO
9,800.0	0.00	0.00	9,535.1	-407.4	1,919.4	1,962.2	0.00	0.00	
9,900.0	0.00	0.00	9,635.1	-407.4	1,919.4	1,962.2	0.00	0.00	
9,993.9	0.00	0.00	9,729.0	-407.4	1,919.4	1,962.2	0.00	0.00	ROLLINS
10,000.0	0.00	0.00	9,735.1	-407.4	1,919.4	1,962.2	0.00	0.00	
10,100.0	0.00	0.00	9,835.1	-407.4	1,919.4	1,962.2	0.00	0.00	
10,143.9	0.00	0.00	9,879.0	-407.4	1,919.4	1,962.2	0.00	0.00	TD at 10143.9 - TD

Targets									
Target Name	Dip Angle (°)	Dip Dir. (°)	TVD (usft)	+N/-S (usft)	+E/-W (usft)	Northing (usft)	Easting (usft)	Latitude	Longitude
41D-36-795 PBHL - hit/miss target - Shape - Circle (radius 50.0)	0.00	0.00	9,879.0	-407.4	1,919.4	14,321,180.00	2,505,933.10	39.397010	-107.936577

Formations						
Measured Depth (usft)	Vertical Depth (usft)	Name	Lithology	Dip (°)	Dip Direction (°)	
6,953.0	6,716.0	OHIO_CREEK				
7,461.1	7,205.0	WILLIAMS_FORK				
8,145.9	7,881.0	TOP_GAS				
9,743.9	9,479.0	CAMEO				
9,993.9	9,729.0	ROLLINS				
10,143.9	9,879.0	TD				

Plan Annotations				
Measured Depth (usft)	Vertical Depth (usft)	+N/-S (usft)	+E/-W (usft)	Comment
300.0	300.0	0.0	0.0	Start Build 3.00
825.4	818.8	-14.9	70.2	Start 6695.2 hold at 825.4 MD
7,520.6	7,262.2	-392.4	1,849.2	Start Drop -3.00
8,045.9	7,781.0	-407.4	1,919.4	Start 2098.0 hold at 8045.9 MD
10,143.9	9,879.0	-407.4	1,919.4	TD at 10143.9