



TEMPERATURE LOG
CCL

Company	WPX ENERGY					
Well	FEDERAL RU 442 - 8					
Field	RULISON					
County	GARFIELD	State	COLORADO			
Location:	API # : 05 - 045 - 22765		Other Services			
LAT : 39.465451						
LONG: -107.800872						
SEC 8	TWP 7s	RGE 93w				
Permanent Datum	G.L.	Elevation	7736'			
Log Measured From	K.B.	Ft Above PD	24'			
Drilling Measured From	K.B.		Elevation K.B. 7760' D.F. G.L. 7736'			
Date	01 - 12 - 2016					
Run Number	ONE					
Depth Driller	10834'					
Present Depth Driller	N/A					
Depth Logger	10792'					
Bottom Logged Interval	10792'					
Top Log Interval	SURFACE					
Fluid Level	SURFACE					
Type Fluid	WATER					
Max. Recorded Temp.	187.4 DEG F					
Estimated Cement Top	5573'					
Equipment Number	216					
Location	GRAND JCT.					
Recorded By	INGRAM					
Witnessed By	MR. DYLAN					
Run Number	Borehole Record		Casing Record			
Bit	From	To	Size	Weight	From	To

<<< Fold Here >>>

All interpretations are opinions based on inferences from electrical or other measurements and we cannot and do not guarantee the accuracy or correctness of any interpretation, and we shall not, except in the case of gross or willful negligence on our part, be liable or responsible for any loss, costs, damages, or expenses incurred or sustained by anyone resulting from any interpretation made by any of our officers, agents or employees. These interpretations are also subject to our general terms and conditions set out in our current Price Schedule.

WARRIOR 7.0 SOFTWARE - Comments

NOTE: LOG WAS DEPTH CORRELATED USING KB OF 24'

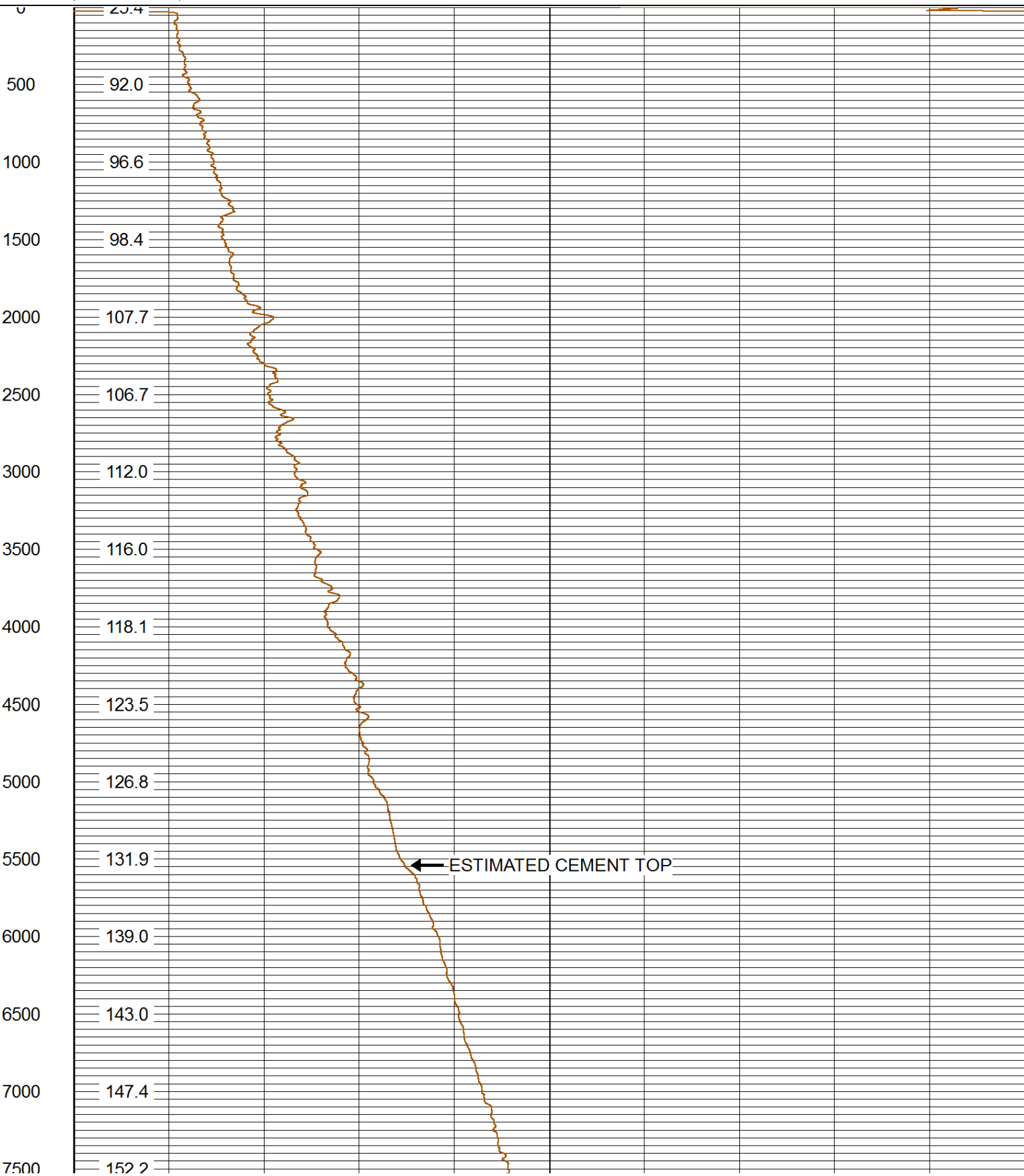
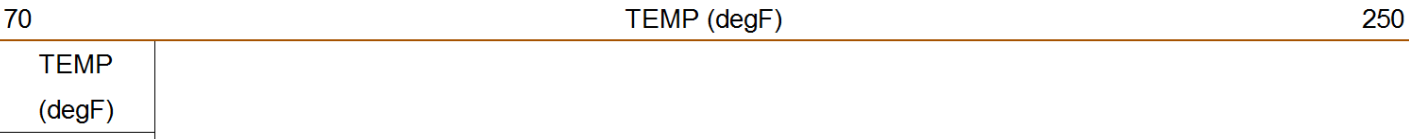
SHORT JOINT: 6945' TO 6966'

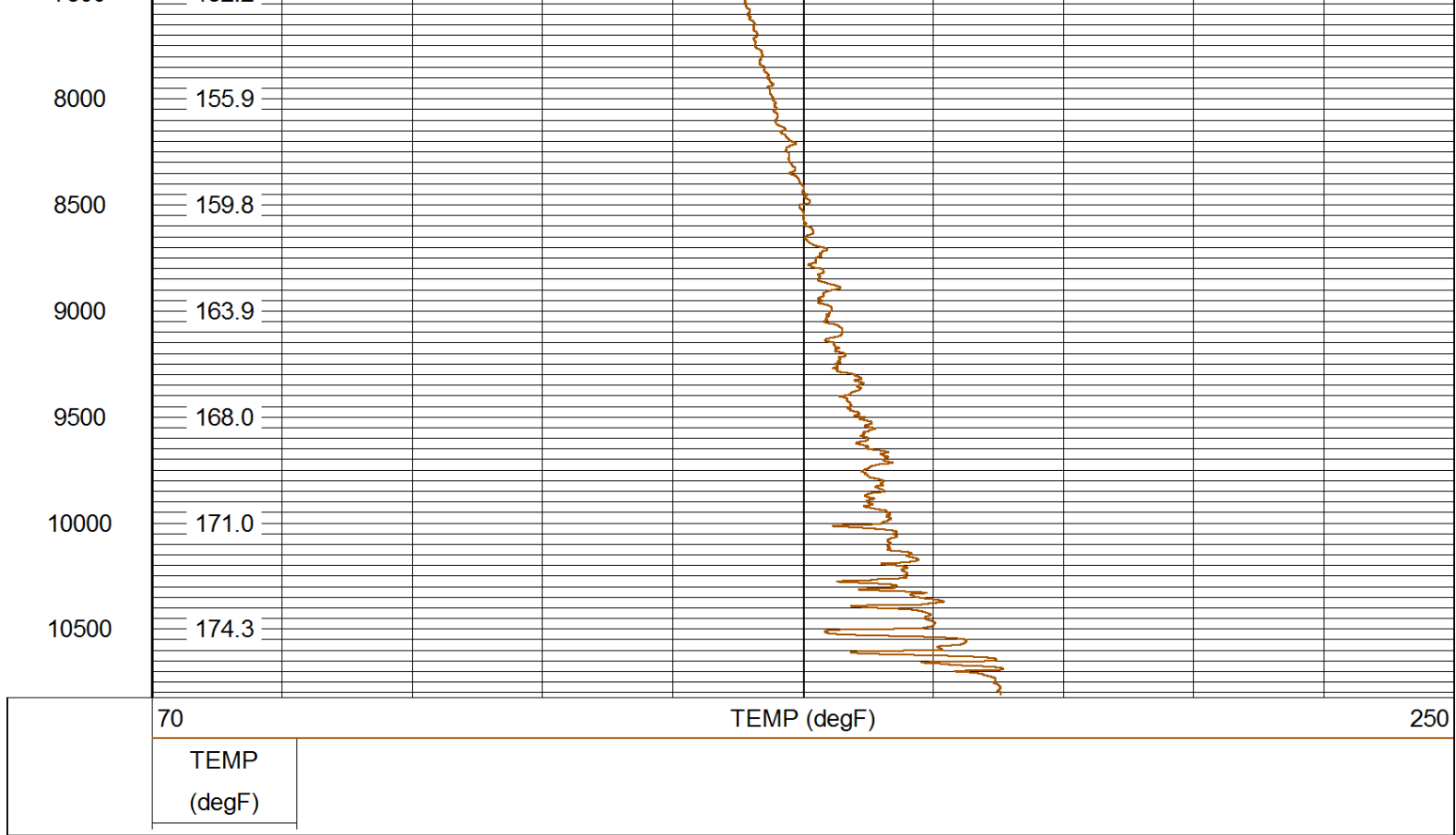
MAIN PASS 5" = 100'
CSG PSI = STATIC




MAIN PASS QUICKLOOK

Database File: 011216_wpxenergy_fed_ru_442_8.db
Dataset Pathname: main/pass2
Presentation Format: rmtemp_q
Dataset Creation: Tue Jan 12 18:13:47 2016 by Calc SCH 120430
Charted by: Depth in Feet scaled 1:10000





	Company	WPX ENERGY
	Well	FEDERAL RU 442 - 8
	Field	RULISON
	County	GARFIELD
	State	COLORADO