



February 9, 2016

Mr. Paul Schwarz  
Kerr-McGee Oil & Gas Onshore LP  
1099 18th Street, Suite 1800  
Denver, Colorado 80202

**RE: Colorado Oil & Gas Conservation Commission (COGCC)  
Form 4 (Interim Reclamation Completion Notice)  
Pettinger 4NE-18HZ (Location: 434206)  
Kerr-McGee Oil & Gas Onshore LP (Operator: 47120)**

Dear Mr. Schwarz:

Apex Companies, LLC (Apex) is pleased to present this letter to Kerr-McGee Oil & Gas Onshore LP (Kerr-McGee) documenting successful completion of interim reclamation efforts per COGCC Rule 1003 on the location specified above in Weld County, Colorado. Attached is a topographic map, which identifies the referenced location.

Based on communications with Kerr-McGee personnel and subsequent site inspections, Apex personnel confirmed that the unused portions of the reduced production footprint have been returned to crop land and agricultural use. Based on this result, interim reclamation as defined by COGCC Rule 1003.e (1) has been achieved. Photographs required by Rule 1003.e (3) are also attached along with a diagram illustrating photo origins.

Apex appreciates the opportunity to provide environmental consulting services to Kerr-McGee with this project. Should you have any questions or require additional information, please don't hesitate to contact me.

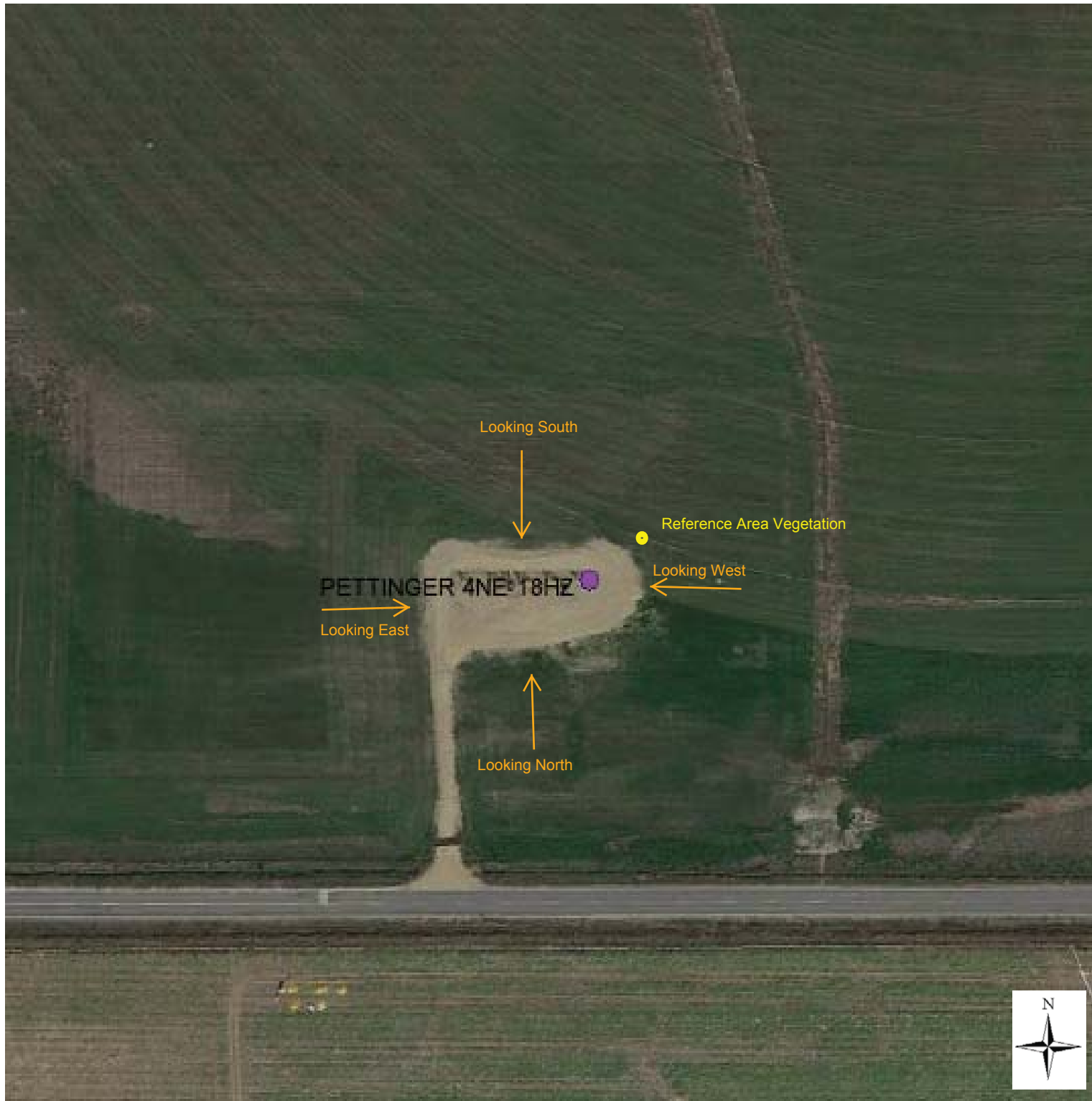
Sincerely,  
**Apex Companies, LLC**

A handwritten signature in black ink, appearing to read 'Chris Hines', with a stylized flourish at the end.

Chris Hines  
Project Manager  
970-261-1127  
[chris.hines@apexc.com](mailto:chris.hines@apexc.com)

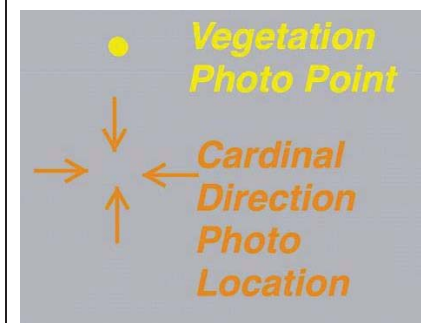
Attachments:

1. Site Diagram
2. Topographic Location Map
3. Inspection Photos



## Vegetation Survey Site Map

Pettinger 4NE-18HZ  
(434206)



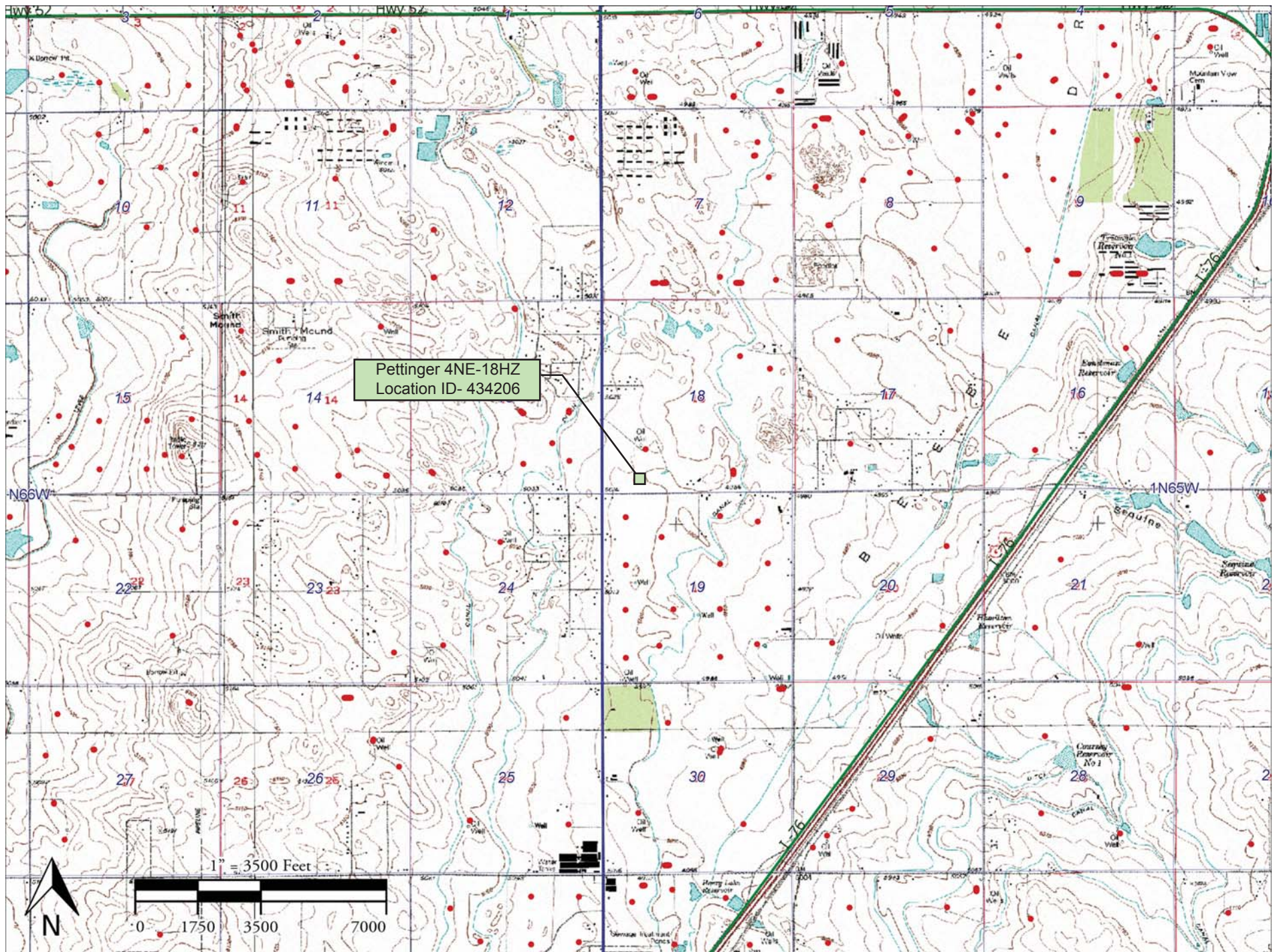
Legal Description: SWSW, Sec 18,  
T1N-R65W  
County: Weld

Land Use: Cropland  
Inspector: Jenny Schoedel  
Assessment Date: July 28, 2015





# Pettinger 4NE-18HZ (434206) Topographic Location Map





**Kerr McGee Oil & Gas Onshore LP**  
**Form 4 (Interim Reclamation Completion Notice)**  
**Pettinger 4NE-18HZ (434206)**

Vegetation Assessment  
Completed - July 28, 2015



South of Disturbance  
Looking North  
40.044674°/-104.712445°



North of Disturbance  
Looking South  
40.045023°/-104.712459°



West of Disturbance  
Looking East  
40.044838°/-104.712887°



East of Disturbance  
Looking West  
40.044889°/-104.712021°





Reference Area Vegetation  
40.045011°/-104.712087°

