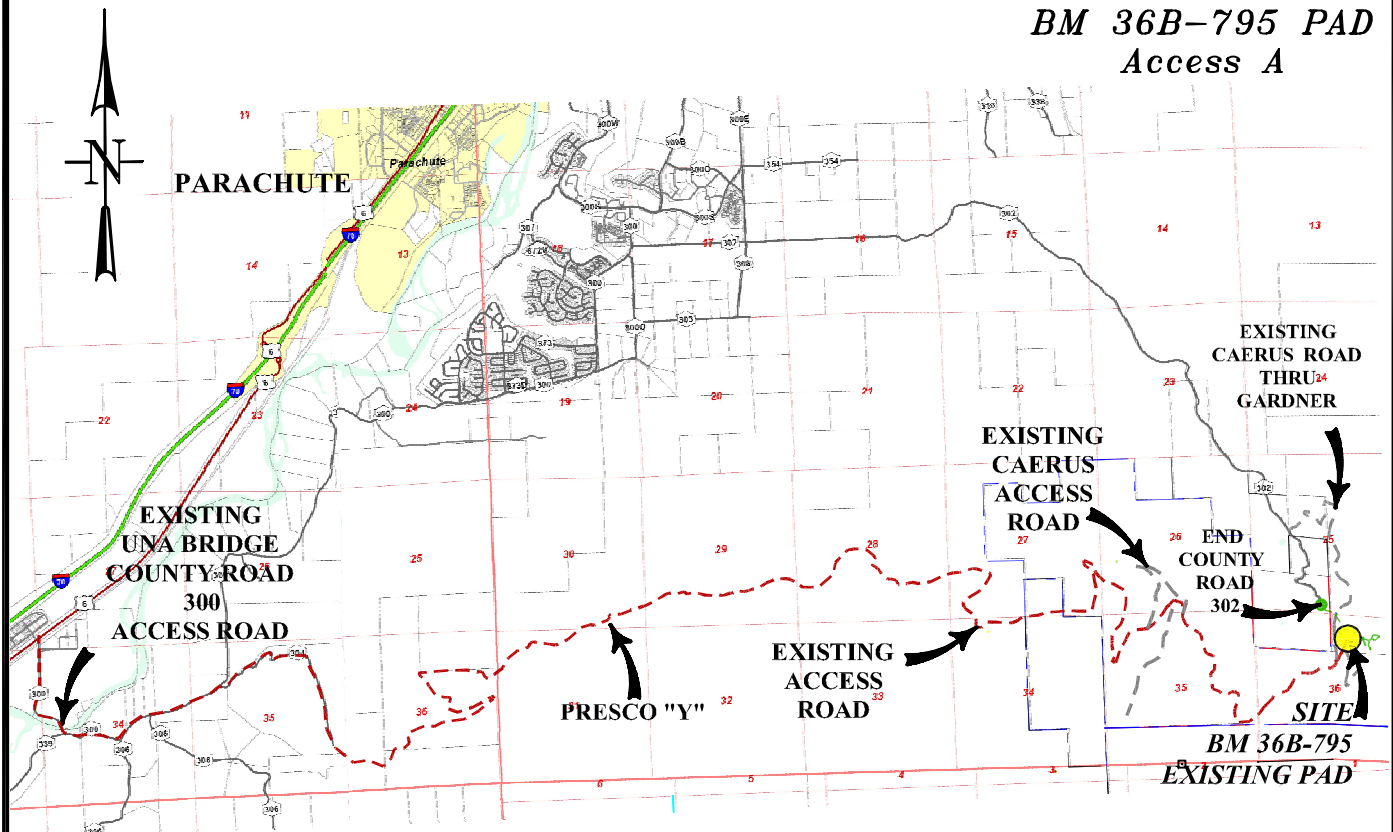


Plat 5A
BM 36B-795 PAD
Access A



ACCESS:

FROM THE UNA BRIDGE, PROCEED ALONG COUNTY ROAD 318 IN A GENERAL EAST/NORTHEAST DIRECTION ± 1.2 MILES TO THE KLEBOLD/THROM GATE, PROCEED IN A GENERAL EASTERLY/SOUTHEASTERLY DIRECTION ON A PRIVATE DIRT/GRAVEL ROAD ± 1.8 MILES TO THE APPROXIMATE BLM BOUNDARY, CONTINUE ON THE DIRT/GRAVEL ROAD THRU BLM IN A GENERAL NORTHERLY DIRECTION ± 0.1 MILES TO THE APPROXIMATE TOM BROWN, INC BOUNDARY, CONTINUE ON THE DIRT/GRAVEL ROAD THRU TOM BROWN, INC PROPERTY IN A GENERAL NORTHEASTERLY/NORTHWESTERLY DIRECTION ± 1.6 MILES TO AN INTERSECTION WITH A DIRT/GRAVEL ROAD ON THE RIGHT, PROCEED RIGHT IN A GENERAL EASTERLY DIRECTION THRU TOM BROWN, INC PROPERTY ± 0.6 MILES TO THE APPROXIMATE BLM BOUNDARY, CONTINUE ON THE DIRT/GRAVEL ROAD IN A GENERAL EASTERLY DIRECTION THRU BLM PROPERTY ± 3.1 MILES TO THE TOM BROWN, INC FEDERAL #28-95 WELL SITE, CONTINUE ALONG THE DIRT/GRAVEL ROAD IN A GENERAL EASTERLY DIRECTION ± 2.3 MILES TO A 'Y' INTERSECTION, PROCEED LEFT ALONG THE DIRT/GRAVEL ROAD IN A GENERAL EASTERLY DIRECTION ± 0.4 MILES TO A SWITCH BACK PROCEED UP THE ROADWAY ± 0.9 MILES TO THE EXISTING 35-D-795 PAD PROCEED THRU THE PAD LOCATION ± 0.5 MILES TO A DIRT ROAD INTERSECTION, PROCEED STRAIGHT 0.1 MILES TO THE TOP OF THE DIVIDE STAY RIGHT AND PROCEED 1.3 MILES PAST THE INTERSECTION TO THE 36L PAD, PROCEED ± 0.6 MILES EASTERLY DOWN THE ROADWAY AND CROSS BRIDGE AT BATTLEMENT CREEK AND PROCEED TO A DIRT ROAD INTERSECTION AND TURN RIGHT, THEN PROCEED ± 0.1 MILES TO A DIRT ROAD INTERSECTION AND STAY LEFT, THEN PROCEED UP THE ACCESS ROAD NORTHERLY/EASTERLY ± 0.1 MILES TO THE EXISTING 36B-795 PAD LOCATION BEING THE POINT OF DESTINATION.

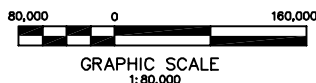
Battlement Mesa 36-B-795

LOT 2(NWNE), SECTION 36,

T. 7 S., R. 95 W. 6th P.M.

Garfield County Colorado

Caerus Piceance LLC



ACCESS-A

CONSTRUCTION SURVEYS, INC.
0012 SUNRISE BLVD. SILT, CO
81652 (970)876-5753

SURVEY BY:REW 12/01/15

PDOP: 1.8

DRAWN BY:REW 01/26/16

DWG: CAERUS\BM36B-795PLAT1

REVISED: