



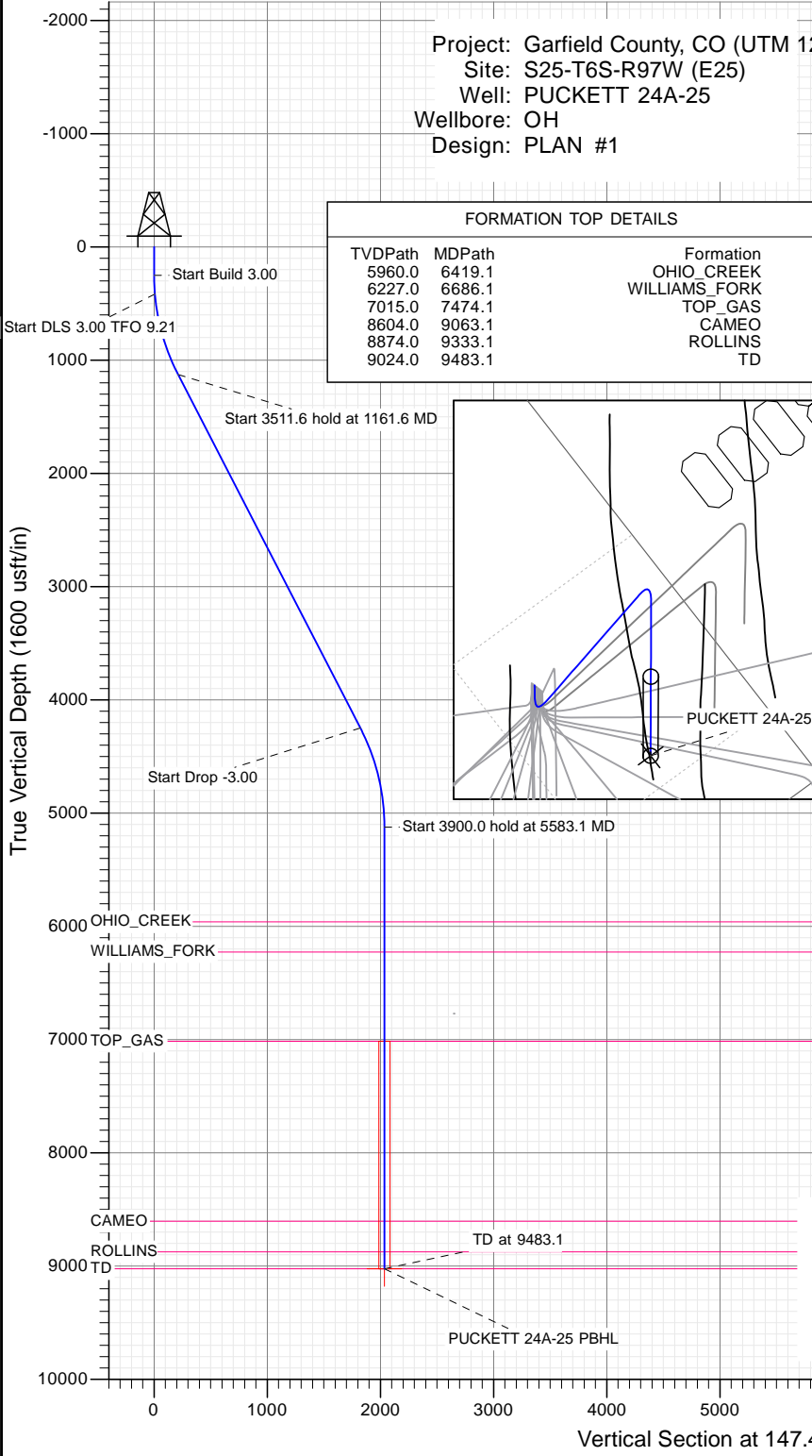
SECTION DETAILS

Sec	MD	Inc	Azi	TVD	+N/-S	+E/-W	Dleg	TFace	V Sect	Target
1	0.0	0.00	0.00	0.0	0.0	0.0	0.00	0.00	0.0	
2	250.0	0.00	0.00	250.0	0.0	0.0	0.00	0.00	0.0	
3	416.7	5.00	140.00	416.5	-5.6	4.7	3.00	140.00	7.2	
4	1161.6	27.29	147.62	1127.5	-176.9	118.4	3.00	9.21	212.8	
5	4673.3	27.29	147.62	4248.2	-1536.9	980.7	0.00	0.00	1823.1	
6	5583.1	0.00	0.00	5124.0	-1716.5	1094.6	3.00	180.00	2035.8	
7	9483.1	0.00	0.00	9024.0	-1716.5	1094.6	0.00	0.00	2035.8	PUCKETT 24A-25 PBHL

Project: Garfield County, CO (UTM 12  
 Site: S25-T6S-R97W (E25)  
 Well: PUCKETT 24A-25  
 Wellbore: OH  
 Design: PLAN #1

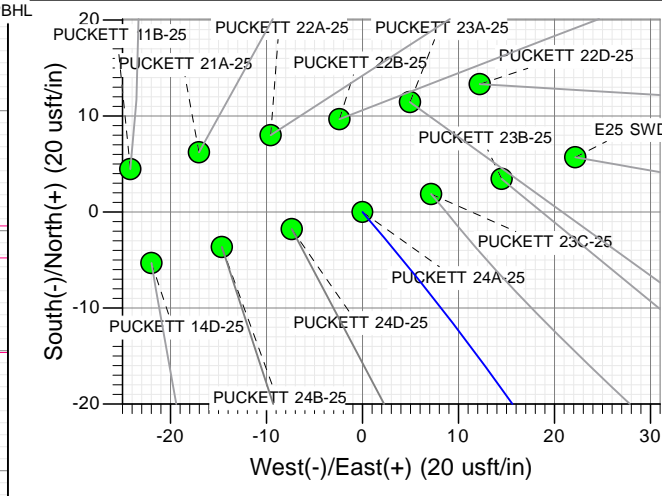
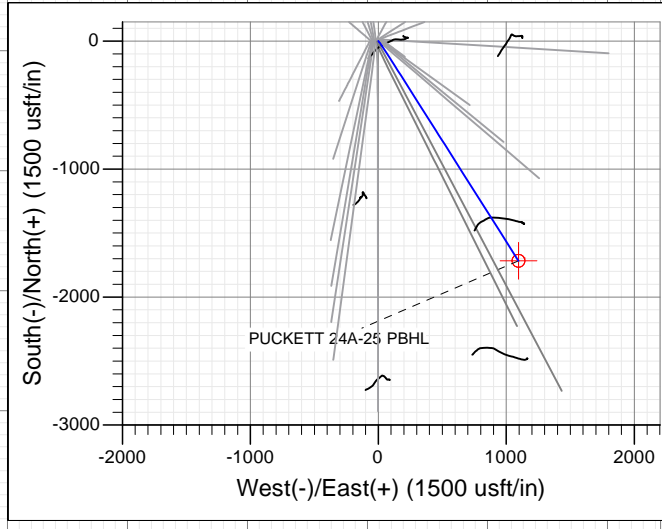
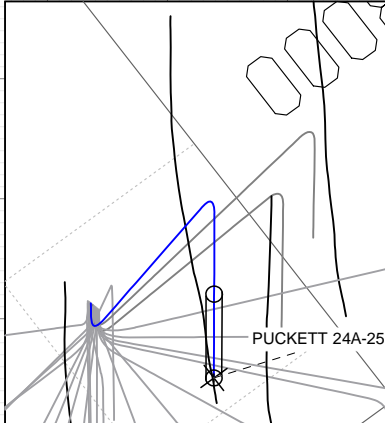
PLAN #1  
 PUCKETT 24A-25  
 15XXX LR  
 30 KB @ 8406.0usft  
 Ground Level @ 8376.0  
 NAD 1927 - Western US  
 Well PUCKETT 24A-25, True North

Type	Target	Origin	N/S	E/W	From	
TD	No Target (Freehand)	Slot			TVD	
Name		TVD	+N/-S	+E/-W	Latitude	Longitude
PUCKETT 24A-25 PBHL		9024.0	-1716.5	1094.6	39.490476	-108.171573



FORMATION TOP DETAILS

TVDPATH	MDPATH	FORMATION
5960.0	6419.1	OHIO_CREEK
6227.0	6686.1	WILLIAMS_FORK
7015.0	7474.1	TOP_GAS
8604.0	9063.1	CAMEO
8874.0	9333.1	ROLLINS
9024.0	9483.1	TD



T M  
 Azimuths to True North  
 Magnetic North: 9.82°  
 Magnetic Field  
 Strength: 51888.5snT  
 Dip Angle: 65.85°  
 Date: 1/7/2016  
 Model: HDGM

CASING DETAILS  
 No casing data is available



WELL DETAILS: PUCKETT 24A-25

Ground Level: 8376.0

+N/-S	+E/-W	Northing	Easting	Latitude	Longitude
0.0	0.0	14354731.30	2437311.60	39.495187	-108.175450

## Planning Report

<b>Database:</b>	USA EDM 5000 Multi Users DB	<b>Local Co-ordinate Reference:</b>	Well PUCKETT 24A-25
<b>Company:</b>	Caerus Oil & Gas	<b>TVD Reference:</b>	30' KB @ 8406.0usft
<b>Project:</b>	Garfield County, CO (UTM 12N)	<b>MD Reference:</b>	30' KB @ 8406.0usft
<b>Site:</b>	S25-T6S-R97W (E25)	<b>North Reference:</b>	True
<b>Well:</b>	PUCKETT 24A-25	<b>Survey Calculation Method:</b>	Minimum Curvature
<b>Wellbore:</b>	OH		
<b>Design:</b>	PLAN #1		

<b>Project</b>	Garfield County, CO (UTM 12N)		
<b>Map System:</b>	Universal Transverse Mercator (US Survey Feet)	<b>System Datum:</b>	Mean Sea Level
<b>Geo Datum:</b>	NAD 1927 - Western US		
<b>Map Zone:</b>	Zone 12N (114 W to 108 W)		

<b>Site</b>	S25-T6S-R97W (E25)				
<b>Site Position:</b>		<b>Northing:</b>	14,354,735.00 usft	<b>Latitude:</b>	39.495199
<b>From:</b>	Map	<b>Easting:</b>	2,437,287.30 usft	<b>Longitude:</b>	-108.175536
<b>Position Uncertainty:</b>	0.0 usft	<b>Slot Radius:</b>	13-3/16"	<b>Grid Convergence:</b>	1.80 °

<b>Well</b>	PUCKETT 24A-25					
<b>Well Position</b>	<b>+N/-S</b>	0.0 usft	<b>Northing:</b>	14,354,731.30 usft	<b>Latitude:</b>	39.495187
	<b>+E/-W</b>	0.0 usft	<b>Easting:</b>	2,437,311.60 usft	<b>Longitude:</b>	-108.175450
<b>Position Uncertainty</b>		0.0 usft	<b>Wellhead Elevation:</b>	0.0 usft	<b>Ground Level:</b>	8,376.0 usft

<b>Wellbore</b>	OH				
<b>Magnetics</b>	<b>Model Name</b>	<b>Sample Date</b>	<b>Declination</b>	<b>Dip Angle</b>	<b>Field Strength</b>
	HDGM	1/7/2016	(°) 9.82	(°) 65.85	(nT) 51,889

<b>Design</b>	PLAN #1			
<b>Audit Notes:</b>				
<b>Version:</b>	<b>Phase:</b>	PLAN	<b>Tie On Depth:</b>	0.0
<b>Vertical Section:</b>	<b>Depth From (TVD)</b>	<b>+N/-S</b>	<b>+E/-W</b>	<b>Direction</b>
	(usft)	(usft)	(usft)	(°)
	0.0	0.0	0.0	147.47

Plan Sections										
Measured Depth (usft)	Inclination (°)	Azimuth (°)	Vertical Depth (usft)	+N/-S (usft)	+E/-W (usft)	Dogleg Rate (°/100usft)	Build Rate (°/100usft)	Turn Rate (°/100usft)	TFO (°)	Target
0.0	0.00	0.00	0.0	0.0	0.0	0.00	0.00	0.00	0.00	
250.0	0.00	0.00	250.0	0.0	0.0	0.00	0.00	0.00	0.00	
416.7	5.00	140.00	416.5	-5.6	4.7	3.00	3.00	0.00	140.00	
1,161.6	27.29	147.62	1,127.5	-176.9	118.4	3.00	2.99	1.02	9.21	
4,673.3	27.29	147.62	4,248.2	-1,536.9	980.7	0.00	0.00	0.00	0.00	
5,583.1	0.00	0.00	5,124.0	-1,716.5	1,094.6	3.00	-3.00	0.00	180.00	
9,483.1	0.00	0.00	9,024.0	-1,716.5	1,094.6	0.00	0.00	0.00	0.00	PUCKETT 24A-25 PE

Planning Report

<b>Database:</b>	USA EDM 5000 Multi Users DB	<b>Local Co-ordinate Reference:</b>	Well PUCKETT 24A-25
<b>Company:</b>	Caerus Oil & Gas	<b>TVD Reference:</b>	30' KB @ 8406.0usft
<b>Project:</b>	Garfield County, CO (UTM 12N)	<b>MD Reference:</b>	30' KB @ 8406.0usft
<b>Site:</b>	S25-T6S-R97W (E25)	<b>North Reference:</b>	True
<b>Well:</b>	PUCKETT 24A-25	<b>Survey Calculation Method:</b>	Minimum Curvature
<b>Wellbore:</b>	OH		
<b>Design:</b>	PLAN #1		

Planned Survey									
Measured Depth (usft)	Inclination (°)	Azimuth (°)	Vertical Depth (usft)	+N/-S (usft)	+E/-W (usft)	Vertical Section (usft)	Dogleg Rate (°/100usft)	Build Rate (°/100u)	Comments / Formations
0.0	0.00	0.00	0.0	0.0	0.0	0.0	0.00	0.00	
100.0	0.00	0.00	100.0	0.0	0.0	0.0	0.00	0.00	
200.0	0.00	0.00	200.0	0.0	0.0	0.0	0.00	0.00	
250.0	0.00	0.00	250.0	0.0	0.0	0.0	0.00	0.00	Start Build 3.00
300.0	1.50	140.00	300.0	-0.5	0.4	0.6	3.00	3.00	
400.0	4.50	140.00	399.8	-4.5	3.8	5.8	3.00	3.00	
416.7	5.00	140.00	416.5	-5.6	4.7	7.2	3.00	3.00	Start DLS 3.00 TFO 9.21
500.0	7.48	143.07	499.3	-12.7	10.3	16.2	3.00	2.97	
600.0	10.47	144.84	598.1	-25.3	19.4	31.8	3.00	2.99	
700.0	13.46	145.83	695.9	-42.4	31.2	52.5	3.00	2.99	
800.0	16.45	146.47	792.5	-63.8	45.5	78.3	3.00	3.00	
900.0	19.45	146.91	887.6	-89.6	62.5	109.1	3.00	3.00	
1,000.0	22.45	147.24	981.0	-119.6	81.9	144.9	3.00	3.00	
1,100.0	25.45	147.49	1,072.4	-153.8	103.8	185.4	3.00	3.00	
1,161.6	27.29	147.62	1,127.5	-176.9	118.4	212.8	3.00	3.00	Start 3511.6 hold at 1161.6 MD
1,200.0	27.29	147.62	1,161.7	-191.7	127.9	230.4	0.00	0.00	
1,300.0	27.29	147.62	1,250.5	-230.5	152.4	276.3	0.00	0.00	
1,400.0	27.29	147.62	1,339.4	-269.2	177.0	322.1	0.00	0.00	
1,500.0	27.29	147.62	1,428.3	-307.9	201.5	368.0	0.00	0.00	
1,600.0	27.29	147.62	1,517.1	-346.7	226.1	413.8	0.00	0.00	
1,700.0	27.29	147.62	1,606.0	-385.4	250.6	459.7	0.00	0.00	
1,800.0	27.29	147.62	1,694.9	-424.1	275.2	505.6	0.00	0.00	
1,900.0	27.29	147.62	1,783.7	-462.8	299.8	551.4	0.00	0.00	
2,000.0	27.29	147.62	1,872.6	-501.6	324.3	597.3	0.00	0.00	
2,100.0	27.29	147.62	1,961.5	-540.3	348.9	643.1	0.00	0.00	
2,200.0	27.29	147.62	2,050.3	-579.0	373.4	689.0	0.00	0.00	
2,300.0	27.29	147.62	2,139.2	-617.8	398.0	734.8	0.00	0.00	
2,400.0	27.29	147.62	2,228.1	-656.5	422.5	780.7	0.00	0.00	
2,500.0	27.29	147.62	2,316.9	-695.2	447.1	826.6	0.00	0.00	
2,600.0	27.29	147.62	2,405.8	-733.9	471.6	872.4	0.00	0.00	
2,700.0	27.29	147.62	2,494.6	-772.7	496.2	918.3	0.00	0.00	
2,800.0	27.29	147.62	2,583.5	-811.4	520.8	964.1	0.00	0.00	
2,900.0	27.29	147.62	2,672.4	-850.1	545.3	1,010.0	0.00	0.00	
3,000.0	27.29	147.62	2,761.2	-888.9	569.9	1,055.8	0.00	0.00	
3,100.0	27.29	147.62	2,850.1	-927.6	594.4	1,101.7	0.00	0.00	
3,200.0	27.29	147.62	2,939.0	-966.3	619.0	1,147.6	0.00	0.00	
3,300.0	27.29	147.62	3,027.8	-1,005.0	643.5	1,193.4	0.00	0.00	
3,400.0	27.29	147.62	3,116.7	-1,043.8	668.1	1,239.3	0.00	0.00	
3,500.0	27.29	147.62	3,205.6	-1,082.5	692.6	1,285.1	0.00	0.00	
3,600.0	27.29	147.62	3,294.4	-1,121.2	717.2	1,331.0	0.00	0.00	
3,700.0	27.29	147.62	3,383.3	-1,160.0	741.7	1,376.8	0.00	0.00	
3,800.0	27.29	147.62	3,472.2	-1,198.7	766.3	1,422.7	0.00	0.00	
3,900.0	27.29	147.62	3,561.0	-1,237.4	790.9	1,468.6	0.00	0.00	
4,000.0	27.29	147.62	3,649.9	-1,276.1	815.4	1,514.4	0.00	0.00	
4,100.0	27.29	147.62	3,738.8	-1,314.9	840.0	1,560.3	0.00	0.00	
4,200.0	27.29	147.62	3,827.6	-1,353.6	864.5	1,606.1	0.00	0.00	
4,300.0	27.29	147.62	3,916.5	-1,392.3	889.1	1,652.0	0.00	0.00	
4,400.0	27.29	147.62	4,005.4	-1,431.1	913.6	1,697.8	0.00	0.00	
4,500.0	27.29	147.62	4,094.2	-1,469.8	938.2	1,743.7	0.00	0.00	
4,600.0	27.29	147.62	4,183.1	-1,508.5	962.7	1,789.6	0.00	0.00	
4,673.3	27.29	147.62	4,248.2	-1,536.9	980.7	1,823.1	0.00	0.00	Start Drop -3.00
4,700.0	26.49	147.62	4,272.0	-1,547.1	987.2	1,835.2	3.00	-3.00	

## Planning Report

<b>Database:</b>	USA EDM 5000 Multi Users DB	<b>Local Co-ordinate Reference:</b>	Well PUCKETT 24A-25
<b>Company:</b>	Caerus Oil & Gas	<b>TVD Reference:</b>	30' KB @ 8406.0usft
<b>Project:</b>	Garfield County, CO (UTM 12N)	<b>MD Reference:</b>	30' KB @ 8406.0usft
<b>Site:</b>	S25-T6S-R97W (E25)	<b>North Reference:</b>	True
<b>Well:</b>	PUCKETT 24A-25	<b>Survey Calculation Method:</b>	Minimum Curvature
<b>Wellbore:</b>	OH		
<b>Design:</b>	PLAN #1		

Planned Survey									
Measured Depth (usft)	Inclination (°)	Azimuth (°)	Vertical Depth (usft)	+N/-S (usft)	+E/-W (usft)	Vertical Section (usft)	Dogleg Rate (°/100usft)	Build Rate (°/100u)	Comments / Formations
4,800.0	23.49	147.62	4,362.7	-1,582.8	1,009.8	1,877.5	3.00	-3.00	
4,900.0	20.49	147.62	4,455.4	-1,614.4	1,029.9	1,914.9	3.00	-3.00	
5,000.0	17.49	147.62	4,549.9	-1,641.9	1,047.3	1,947.5	3.00	-3.00	
5,100.0	14.49	147.62	4,646.1	-1,665.2	1,062.1	1,975.0	3.00	-3.00	
5,200.0	11.49	147.62	4,743.5	-1,684.1	1,074.1	1,997.5	3.00	-3.00	
5,300.0	8.49	147.62	4,842.0	-1,698.8	1,083.4	2,014.8	3.00	-3.00	
5,400.0	5.49	147.62	4,941.2	-1,709.1	1,089.9	2,027.0	3.00	-3.00	
5,500.0	2.49	147.62	5,040.9	-1,715.0	1,093.6	2,034.0	3.00	-3.00	
5,583.1	0.00	0.00	5,124.0	-1,716.5	1,094.6	2,035.8	3.00	-3.00	Start 3900.0 hold at 5583.1 MD
5,600.0	0.00	0.00	5,140.9	-1,716.5	1,094.6	2,035.8	0.00	0.00	
5,700.0	0.00	0.00	5,240.9	-1,716.5	1,094.6	2,035.8	0.00	0.00	
5,800.0	0.00	0.00	5,340.9	-1,716.5	1,094.6	2,035.8	0.00	0.00	
5,900.0	0.00	0.00	5,440.9	-1,716.5	1,094.6	2,035.8	0.00	0.00	
6,000.0	0.00	0.00	5,540.9	-1,716.5	1,094.6	2,035.8	0.00	0.00	
6,100.0	0.00	0.00	5,640.9	-1,716.5	1,094.6	2,035.8	0.00	0.00	
6,200.0	0.00	0.00	5,740.9	-1,716.5	1,094.6	2,035.8	0.00	0.00	
6,300.0	0.00	0.00	5,840.9	-1,716.5	1,094.6	2,035.8	0.00	0.00	
6,400.0	0.00	0.00	5,940.9	-1,716.5	1,094.6	2,035.8	0.00	0.00	
6,419.1	0.00	0.00	5,960.0	-1,716.5	1,094.6	2,035.8	0.00	0.00	OHIO_CREEK
6,500.0	0.00	0.00	6,040.9	-1,716.5	1,094.6	2,035.8	0.00	0.00	
6,600.0	0.00	0.00	6,140.9	-1,716.5	1,094.6	2,035.8	0.00	0.00	
6,686.1	0.00	0.00	6,227.0	-1,716.5	1,094.6	2,035.8	0.00	0.00	WILLIAMS_FORK
6,700.0	0.00	0.00	6,240.9	-1,716.5	1,094.6	2,035.8	0.00	0.00	
6,800.0	0.00	0.00	6,340.9	-1,716.5	1,094.6	2,035.8	0.00	0.00	
6,900.0	0.00	0.00	6,440.9	-1,716.5	1,094.6	2,035.8	0.00	0.00	
7,000.0	0.00	0.00	6,540.9	-1,716.5	1,094.6	2,035.8	0.00	0.00	
7,100.0	0.00	0.00	6,640.9	-1,716.5	1,094.6	2,035.8	0.00	0.00	
7,200.0	0.00	0.00	6,740.9	-1,716.5	1,094.6	2,035.8	0.00	0.00	
7,300.0	0.00	0.00	6,840.9	-1,716.5	1,094.6	2,035.8	0.00	0.00	
7,400.0	0.00	0.00	6,940.9	-1,716.5	1,094.6	2,035.8	0.00	0.00	
7,474.1	0.00	0.00	7,015.0	-1,716.5	1,094.6	2,035.8	0.00	0.00	TOP_GAS
7,500.0	0.00	0.00	7,040.9	-1,716.5	1,094.6	2,035.8	0.00	0.00	
7,600.0	0.00	0.00	7,140.9	-1,716.5	1,094.6	2,035.8	0.00	0.00	
7,700.0	0.00	0.00	7,240.9	-1,716.5	1,094.6	2,035.8	0.00	0.00	
7,800.0	0.00	0.00	7,340.9	-1,716.5	1,094.6	2,035.8	0.00	0.00	
7,900.0	0.00	0.00	7,440.9	-1,716.5	1,094.6	2,035.8	0.00	0.00	
8,000.0	0.00	0.00	7,540.9	-1,716.5	1,094.6	2,035.8	0.00	0.00	
8,100.0	0.00	0.00	7,640.9	-1,716.5	1,094.6	2,035.8	0.00	0.00	
8,200.0	0.00	0.00	7,740.9	-1,716.5	1,094.6	2,035.8	0.00	0.00	
8,300.0	0.00	0.00	7,840.9	-1,716.5	1,094.6	2,035.8	0.00	0.00	
8,400.0	0.00	0.00	7,940.9	-1,716.5	1,094.6	2,035.8	0.00	0.00	
8,500.0	0.00	0.00	8,040.9	-1,716.5	1,094.6	2,035.8	0.00	0.00	
8,600.0	0.00	0.00	8,140.9	-1,716.5	1,094.6	2,035.8	0.00	0.00	
8,700.0	0.00	0.00	8,240.9	-1,716.5	1,094.6	2,035.8	0.00	0.00	
8,800.0	0.00	0.00	8,340.9	-1,716.5	1,094.6	2,035.8	0.00	0.00	
8,900.0	0.00	0.00	8,440.9	-1,716.5	1,094.6	2,035.8	0.00	0.00	
9,000.0	0.00	0.00	8,540.9	-1,716.5	1,094.6	2,035.8	0.00	0.00	
9,063.1	0.00	0.00	8,604.0	-1,716.5	1,094.6	2,035.8	0.00	0.00	CAMEO
9,100.0	0.00	0.00	8,640.9	-1,716.5	1,094.6	2,035.8	0.00	0.00	
9,200.0	0.00	0.00	8,740.9	-1,716.5	1,094.6	2,035.8	0.00	0.00	
9,300.0	0.00	0.00	8,840.9	-1,716.5	1,094.6	2,035.8	0.00	0.00	
9,333.1	0.00	0.00	8,874.0	-1,716.5	1,094.6	2,035.8	0.00	0.00	ROLLINS

## Planning Report

<b>Database:</b>	USA EDM 5000 Multi Users DB	<b>Local Co-ordinate Reference:</b>	Well PUCKETT 24A-25
<b>Company:</b>	Caerus Oil & Gas	<b>TVD Reference:</b>	30' KB @ 8406.0usft
<b>Project:</b>	Garfield County, CO (UTM 12N)	<b>MD Reference:</b>	30' KB @ 8406.0usft
<b>Site:</b>	S25-T6S-R97W (E25)	<b>North Reference:</b>	True
<b>Well:</b>	PUCKETT 24A-25	<b>Survey Calculation Method:</b>	Minimum Curvature
<b>Wellbore:</b>	OH		
<b>Design:</b>	PLAN #1		

Planned Survey									
Measured Depth (usft)	Inclination (°)	Azimuth (°)	Vertical Depth (usft)	+N/-S (usft)	+E/-W (usft)	Vertical Section (usft)	Dogleg Rate (°/100usft)	Build Rate (°/100u)	Comments / Formations
9,400.0	0.00	0.00	8,940.9	-1,716.5	1,094.6	2,035.8	0.00	0.00	
9,483.1	0.00	0.00	9,024.0	-1,716.5	1,094.6	2,035.8	0.00	0.00	TD at 9483.1 - TD

Targets											
Target Name	- hit/miss target	- Shape	Dip Angle (°)	Dip Dir. (°)	TVD (usft)	+N/-S (usft)	+E/-W (usft)	Northing (usft)	Easting (usft)	Latitude	Longitude
PUCKETT 24A-25 PBHL			0.00	0.00	9,024.0	-1,716.5	1,094.6	14,353,050.00	2,438,459.50	39.490476	-108.171573
- plan hits target center - Circle (radius 50.0)											

Formations						
Measured Depth (usft)	Vertical Depth (usft)	Name	Lithology	Dip (°)	Dip Direction (°)	
6,419.1	5,960.0	OHIO_CREEK				
6,686.1	6,227.0	WILLIAMS_FORK				
7,474.1	7,015.0	TOP_GAS				
9,063.1	8,604.0	CAMEO				
9,333.1	8,874.0	ROLLINS				
9,483.1	9,024.0	TD				

Plan Annotations					
Measured Depth (usft)	Vertical Depth (usft)	+N/-S (usft)	+E/-W (usft)	Comment	
250.0	250.0	0.0	0.0	Start Build 3.00	
416.7	416.5	-5.6	4.7	Start DLS 3.00 TFO 9.21	
1,161.6	1,127.5	-176.9	118.4	Start 3511.6 hold at 1161.6 MD	
4,673.3	4,248.2	-1,536.9	980.7	Start Drop -3.00	
5,583.1	5,124.0	-1,716.5	1,094.6	Start 3900.0 hold at 5583.1 MD	
9,483.1	9,024.0	-1,716.5	1,094.6	TD at 9483.1	