



SECTION DETAILS

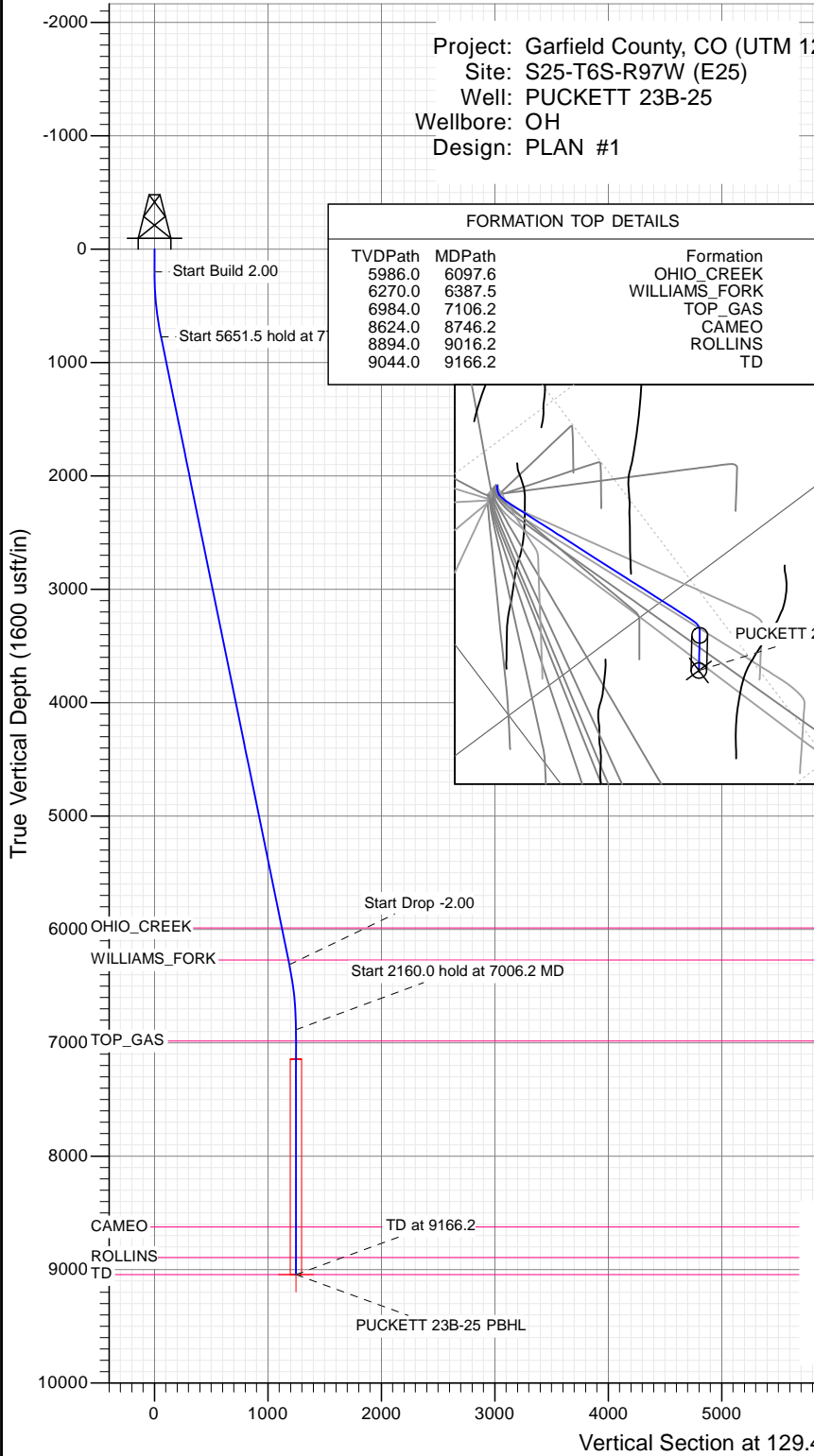
Sec	MD	Inc	Azi	TVD	+N/-S	+E/-W	Dleg	TFace	Vsect	Target
1	0.0	0.00	0.00	0.0	0.0	0.0	0.00	0.00	0.0	
2	200.0	0.00	0.00	200.0	0.0	0.0	0.00	0.00	0.0	
3	777.4	11.55	129.42	773.5	-36.8	44.8	2.00	129.42	58.0	
4	6428.8	11.55	129.42	6310.5	-755.2	918.7	0.00	0.00	1189.3	
5	7006.2	0.00	0.00	6884.0	-792.0	963.5	2.00	180.00	1247.3	
6	9166.2	0.00	0.00	9044.0	-792.0	963.5	0.00	0.00	1247.3	PUCKETT 23B-25 PBHL

Project: Garfield County, CO (UTM 12
 Site: S25-T6S-R97W (E25)
 Well: PUCKETT 23B-25
 Wellbore: OH
 Design: PLAN #1

PLAN #1
 PUCKETT 23B-25
 15XXX; LR
 30 KB @ 8406.0usft
 Ground Level @ 8376.0
 NAD 1927 - Western US
 Well PUCKETT 23B-25, True North

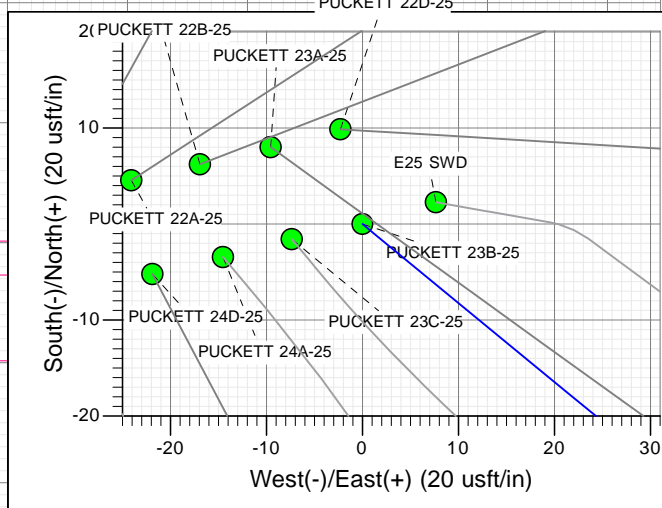
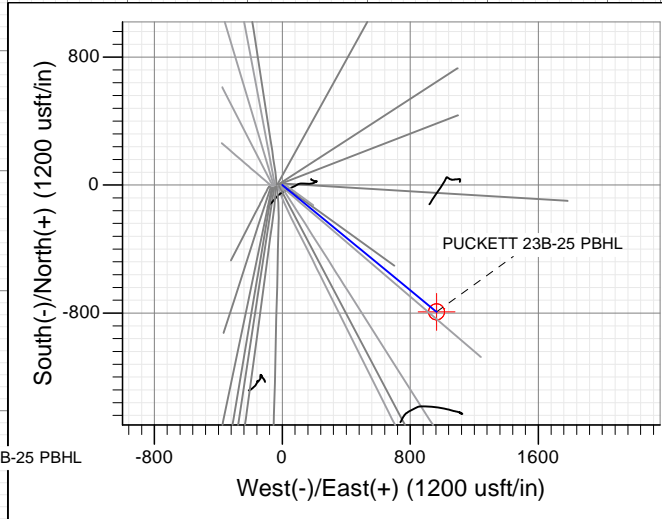
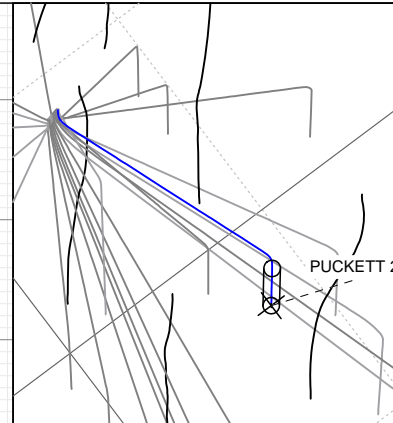
Type	Target	Azimuth	Origin Type	N/S	E/W	From TVD
TD	No Target (Freehand)	129.42	Slot	0.0	0.0	0.0

Name	TVD	+N/-S	+E/-W	Latitude	Longitude
PUCKETT 23B-25 PBHL	9044.0	-792.0	963.5	39.493022	-108.171986



FORMATION TOP DETAILS

TVDPath	MDPath	Formation
5986.0	6097.6	OHIO_CREEK
6270.0	6387.5	WILLIAMS_FORK
6984.0	7106.2	TOP_GAS
8624.0	8746.2	CAMEO
8894.0	9016.2	ROLLINS
9044.0	9166.2	TD



Azimuths to True North
 Magnetic North: 9.82°
 Magnetic Field
 Strength: 51888.5snT
 Dip Angle: 65.85°
 Date: 1/7/2016
 Model: HDGM

CASING DETAILS
 No casing data is available



WELL DETAILS: PUCKETT 23B-25

+N/-S	+E/-W	Northing	Easting	Latitude	Longitude
0.0	0.0	14354735.20	2437326.00	39.495196	-108.175399

Ground Level: 8376.0



Planning Report

Database:	USA EDM 5000 Multi Users DB	Local Co-ordinate Reference:	Well PUCKETT 23B-25
Company:	Caerus Oil & Gas	TVD Reference:	30' KB @ 8406.0usft
Project:	Garfield County, CO (UTM 12N)	MD Reference:	30' KB @ 8406.0usft
Site:	S25-T6S-R97W (E25)	North Reference:	True
Well:	PUCKETT 23B-25	Survey Calculation Method:	Minimum Curvature
Wellbore:	OH		
Design:	PLAN #1		

Project	Garfield County, CO (UTM 12N)		
Map System:	Universal Transverse Mercator (US Survey Feet)	System Datum:	Mean Sea Level
Geo Datum:	NAD 1927 - Western US		
Map Zone:	Zone 12N (114 W to 108 W)		

Site	S25-T6S-R97W (E25)				
Site Position:		Northing:	14,354,735.00 usft	Latitude:	39.495199
From:	Map	Easting:	2,437,287.30 usft	Longitude:	-108.175536
Position Uncertainty:	0.0 usft	Slot Radius:	13-3/16"	Grid Convergence:	1.80 °

Well	PUCKETT 23B-25					
Well Position	+N/-S	0.0 usft	Northing:	14,354,735.20 usft	Latitude:	39.495196
	+E/-W	0.0 usft	Easting:	2,437,326.00 usft	Longitude:	-108.175399
Position Uncertainty		0.0 usft	Wellhead Elevation:	0.0 usft	Ground Level:	8,376.0 usft

Wellbore	OH				
Magnetics	Model Name	Sample Date	Declination	Dip Angle	Field Strength
	HDGM	1/7/2016	(°) 9.82	(°) 65.85	(nT) 51,889

Design	PLAN #1			
Audit Notes:				
Version:	Phase:	PLAN	Tie On Depth:	0.0
Vertical Section:	Depth From (TVD)	+N/-S	+E/-W	Direction
	(usft)	(usft)	(usft)	(°)
	0.0	0.0	0.0	129.42

Plan Sections										
Measured Depth (usft)	Inclination (°)	Azimuth (°)	Vertical Depth (usft)	+N/-S (usft)	+E/-W (usft)	Dogleg Rate (°/100usft)	Build Rate (°/100usft)	Turn Rate (°/100usft)	TFO (°)	Target
0.0	0.00	0.00	0.0	0.0	0.0	0.00	0.00	0.00	0.00	
200.0	0.00	0.00	200.0	0.0	0.0	0.00	0.00	0.00	0.00	
777.4	11.55	129.42	773.5	-36.8	44.8	2.00	2.00	0.00	129.42	
6,428.8	11.55	129.42	6,310.5	-755.2	918.7	0.00	0.00	0.00	0.00	
7,006.2	0.00	0.00	6,884.0	-792.0	963.5	2.00	-2.00	0.00	180.00	
9,166.2	0.00	0.00	9,044.0	-792.0	963.5	0.00	0.00	0.00	0.00	PUCKETT 23B-25 PE

Planning Report

Database:	USA EDM 5000 Multi Users DB	Local Co-ordinate Reference:	Well PUCKETT 23B-25
Company:	Caerus Oil & Gas	TVD Reference:	30' KB @ 8406.0usft
Project:	Garfield County, CO (UTM 12N)	MD Reference:	30' KB @ 8406.0usft
Site:	S25-T6S-R97W (E25)	North Reference:	True
Well:	PUCKETT 23B-25	Survey Calculation Method:	Minimum Curvature
Wellbore:	OH		
Design:	PLAN #1		

Planned Survey									
Measured Depth (usft)	Inclination (°)	Azimuth (°)	Vertical Depth (usft)	+N/-S (usft)	+E/-W (usft)	Vertical Section (usft)	Dogleg Rate (°/100usft)	Build Rate (°/100u)	Comments / Formations
0.0	0.00	0.00	0.0	0.0	0.0	0.0	0.00	0.00	
100.0	0.00	0.00	100.0	0.0	0.0	0.0	0.00	0.00	
200.0	0.00	0.00	200.0	0.0	0.0	0.0	0.00	0.00	Start Build 2.00
300.0	2.00	129.42	300.0	-1.1	1.3	1.7	2.00	2.00	
400.0	4.00	129.42	399.8	-4.4	5.4	7.0	2.00	2.00	
500.0	6.00	129.42	499.5	-10.0	12.1	15.7	2.00	2.00	
600.0	8.00	129.42	598.7	-17.7	21.5	27.9	2.00	2.00	
700.0	10.00	129.42	697.5	-27.6	33.6	43.5	2.00	2.00	
777.4	11.55	129.42	773.5	-36.8	44.8	58.0	2.00	2.00	Start 5651.5 hold at 777.4 MD
800.0	11.55	129.42	795.6	-39.7	48.3	62.5	0.00	0.00	
900.0	11.55	129.42	893.6	-52.4	63.8	82.5	0.00	0.00	
1,000.0	11.55	129.42	991.6	-65.1	79.2	102.6	0.00	0.00	
1,100.0	11.55	129.42	1,089.6	-77.8	94.7	122.6	0.00	0.00	
1,200.0	11.55	129.42	1,187.5	-90.5	110.1	142.6	0.00	0.00	
1,300.0	11.55	129.42	1,285.5	-103.3	125.6	162.6	0.00	0.00	
1,400.0	11.55	129.42	1,383.5	-116.0	141.1	182.6	0.00	0.00	
1,500.0	11.55	129.42	1,481.5	-128.7	156.5	202.6	0.00	0.00	
1,600.0	11.55	129.42	1,579.4	-141.4	172.0	222.7	0.00	0.00	
1,700.0	11.55	129.42	1,677.4	-154.1	187.5	242.7	0.00	0.00	
1,800.0	11.55	129.42	1,775.4	-166.8	202.9	262.7	0.00	0.00	
1,900.0	11.55	129.42	1,873.4	-179.5	218.4	282.7	0.00	0.00	
2,000.0	11.55	129.42	1,971.4	-192.2	233.9	302.7	0.00	0.00	
2,100.0	11.55	129.42	2,069.3	-204.9	249.3	322.7	0.00	0.00	
2,200.0	11.55	129.42	2,167.3	-217.7	264.8	342.8	0.00	0.00	
2,300.0	11.55	129.42	2,265.3	-230.4	280.3	362.8	0.00	0.00	
2,400.0	11.55	129.42	2,363.3	-243.1	295.7	382.8	0.00	0.00	
2,500.0	11.55	129.42	2,461.2	-255.8	311.2	402.8	0.00	0.00	
2,600.0	11.55	129.42	2,559.2	-268.5	326.6	422.8	0.00	0.00	
2,700.0	11.55	129.42	2,657.2	-281.2	342.1	442.9	0.00	0.00	
2,800.0	11.55	129.42	2,755.2	-293.9	357.6	462.9	0.00	0.00	
2,900.0	11.55	129.42	2,853.1	-306.6	373.0	482.9	0.00	0.00	
3,000.0	11.55	129.42	2,951.1	-319.3	388.5	502.9	0.00	0.00	
3,100.0	11.55	129.42	3,049.1	-332.1	404.0	522.9	0.00	0.00	
3,200.0	11.55	129.42	3,147.1	-344.8	419.4	542.9	0.00	0.00	
3,300.0	11.55	129.42	3,245.0	-357.5	434.9	563.0	0.00	0.00	
3,400.0	11.55	129.42	3,343.0	-370.2	450.4	583.0	0.00	0.00	
3,500.0	11.55	129.42	3,441.0	-382.9	465.8	603.0	0.00	0.00	
3,600.0	11.55	129.42	3,539.0	-395.6	481.3	623.0	0.00	0.00	
3,700.0	11.55	129.42	3,636.9	-408.3	496.8	643.0	0.00	0.00	
3,800.0	11.55	129.42	3,734.9	-421.0	512.2	663.0	0.00	0.00	
3,900.0	11.55	129.42	3,832.9	-433.7	527.7	683.1	0.00	0.00	
4,000.0	11.55	129.42	3,930.9	-446.5	543.1	703.1	0.00	0.00	
4,100.0	11.55	129.42	4,028.8	-459.2	558.6	723.1	0.00	0.00	
4,200.0	11.55	129.42	4,126.8	-471.9	574.1	743.1	0.00	0.00	
4,300.0	11.55	129.42	4,224.8	-484.6	589.5	763.1	0.00	0.00	
4,400.0	11.55	129.42	4,322.8	-497.3	605.0	783.2	0.00	0.00	
4,500.0	11.55	129.42	4,420.8	-510.0	620.5	803.2	0.00	0.00	
4,600.0	11.55	129.42	4,518.7	-522.7	635.9	823.2	0.00	0.00	
4,700.0	11.55	129.42	4,616.7	-535.4	651.4	843.2	0.00	0.00	
4,800.0	11.55	129.42	4,714.7	-548.1	666.9	863.2	0.00	0.00	
4,900.0	11.55	129.42	4,812.7	-560.9	682.3	883.2	0.00	0.00	
5,000.0	11.55	129.42	4,910.6	-573.6	697.8	903.3	0.00	0.00	

Planning Report

Database:	USA EDM 5000 Multi Users DB	Local Co-ordinate Reference:	Well PUCKETT 23B-25
Company:	Caerus Oil & Gas	TVD Reference:	30' KB @ 8406.0usft
Project:	Garfield County, CO (UTM 12N)	MD Reference:	30' KB @ 8406.0usft
Site:	S25-T6S-R97W (E25)	North Reference:	True
Well:	PUCKETT 23B-25	Survey Calculation Method:	Minimum Curvature
Wellbore:	OH		
Design:	PLAN #1		

Planned Survey

Measured Depth (usft)	Inclination (°)	Azimuth (°)	Vertical Depth (usft)	+N/-S (usft)	+E/-W (usft)	Vertical Section (usft)	Dogleg Rate (°/100usft)	Build Rate (°/100u)	Comments / Formations
5,100.0	11.55	129.42	5,008.6	-586.3	713.2	923.3	0.00	0.00	
5,200.0	11.55	129.42	5,106.6	-599.0	728.7	943.3	0.00	0.00	
5,300.0	11.55	129.42	5,204.6	-611.7	744.2	963.3	0.00	0.00	
5,400.0	11.55	129.42	5,302.5	-624.4	759.6	983.3	0.00	0.00	
5,500.0	11.55	129.42	5,400.5	-637.1	775.1	1,003.4	0.00	0.00	
5,600.0	11.55	129.42	5,498.5	-649.8	790.6	1,023.4	0.00	0.00	
5,700.0	11.55	129.42	5,596.5	-662.5	806.0	1,043.4	0.00	0.00	
5,800.0	11.55	129.42	5,694.4	-675.3	821.5	1,063.4	0.00	0.00	
5,900.0	11.55	129.42	5,792.4	-688.0	837.0	1,083.4	0.00	0.00	
6,000.0	11.55	129.42	5,890.4	-700.7	852.4	1,103.4	0.00	0.00	
6,097.6	11.55	129.42	5,986.0	-713.1	867.5	1,123.0	0.00	0.00	OHIO_CREEK
6,100.0	11.55	129.42	5,988.4	-713.4	867.9	1,123.5	0.00	0.00	
6,200.0	11.55	129.42	6,086.3	-726.1	883.4	1,143.5	0.00	0.00	
6,300.0	11.55	129.42	6,184.3	-738.8	898.8	1,163.5	0.00	0.00	
6,387.5	11.55	129.42	6,270.0	-749.9	912.3	1,181.0	0.00	0.00	WILLIAMS_FORK
6,400.0	11.55	129.42	6,282.3	-751.5	914.3	1,183.5	0.00	0.00	
6,428.8	11.55	129.42	6,310.5	-755.2	918.7	1,189.3	0.00	0.00	Start Drop -2.00
6,500.0	10.12	129.42	6,380.4	-763.7	929.1	1,202.7	2.00	-2.00	
6,600.0	8.12	129.42	6,479.2	-773.8	941.3	1,218.5	2.00	-2.00	
6,700.0	6.12	129.42	6,578.4	-781.6	950.9	1,230.9	2.00	-2.00	
6,800.0	4.12	129.42	6,678.0	-787.3	957.8	1,239.9	2.00	-2.00	
6,900.0	2.12	129.42	6,777.8	-790.8	962.0	1,245.3	2.00	-2.00	
7,000.0	0.12	129.42	6,877.8	-792.0	963.5	1,247.3	2.00	-2.00	
7,006.2	0.00	0.00	6,884.0	-792.0	963.5	1,247.3	2.00	-2.00	Start 2160.0 hold at 7006.2 MD
7,100.0	0.00	0.00	6,977.8	-792.0	963.5	1,247.3	0.00	0.00	
7,106.2	0.00	0.00	6,984.0	-792.0	963.5	1,247.3	0.00	0.00	TOP_GAS
7,200.0	0.00	0.00	7,077.8	-792.0	963.5	1,247.3	0.00	0.00	
7,300.0	0.00	0.00	7,177.8	-792.0	963.5	1,247.3	0.00	0.00	
7,400.0	0.00	0.00	7,277.8	-792.0	963.5	1,247.3	0.00	0.00	
7,500.0	0.00	0.00	7,377.8	-792.0	963.5	1,247.3	0.00	0.00	
7,600.0	0.00	0.00	7,477.8	-792.0	963.5	1,247.3	0.00	0.00	
7,700.0	0.00	0.00	7,577.8	-792.0	963.5	1,247.3	0.00	0.00	
7,800.0	0.00	0.00	7,677.8	-792.0	963.5	1,247.3	0.00	0.00	
7,900.0	0.00	0.00	7,777.8	-792.0	963.5	1,247.3	0.00	0.00	
8,000.0	0.00	0.00	7,877.8	-792.0	963.5	1,247.3	0.00	0.00	
8,100.0	0.00	0.00	7,977.8	-792.0	963.5	1,247.3	0.00	0.00	
8,200.0	0.00	0.00	8,077.8	-792.0	963.5	1,247.3	0.00	0.00	
8,300.0	0.00	0.00	8,177.8	-792.0	963.5	1,247.3	0.00	0.00	
8,400.0	0.00	0.00	8,277.8	-792.0	963.5	1,247.3	0.00	0.00	
8,500.0	0.00	0.00	8,377.8	-792.0	963.5	1,247.3	0.00	0.00	
8,600.0	0.00	0.00	8,477.8	-792.0	963.5	1,247.3	0.00	0.00	
8,700.0	0.00	0.00	8,577.8	-792.0	963.5	1,247.3	0.00	0.00	
8,746.2	0.00	0.00	8,624.0	-792.0	963.5	1,247.3	0.00	0.00	CAMEO
8,800.0	0.00	0.00	8,677.8	-792.0	963.5	1,247.3	0.00	0.00	
8,900.0	0.00	0.00	8,777.8	-792.0	963.5	1,247.3	0.00	0.00	
9,000.0	0.00	0.00	8,877.8	-792.0	963.5	1,247.3	0.00	0.00	
9,016.2	0.00	0.00	8,894.0	-792.0	963.5	1,247.3	0.00	0.00	ROLLINS
9,100.0	0.00	0.00	8,977.8	-792.0	963.5	1,247.3	0.00	0.00	
9,166.2	0.00	0.00	9,044.0	-792.0	963.5	1,247.3	0.00	0.00	TD at 9166.2 - TD

Planning Report

Database:	USA EDM 5000 Multi Users DB	Local Co-ordinate Reference:	Well PUCKETT 23B-25
Company:	Caerus Oil & Gas	TVD Reference:	30' KB @ 8406.0usft
Project:	Garfield County, CO (UTM 12N)	MD Reference:	30' KB @ 8406.0usft
Site:	S25-T6S-R97W (E25)	North Reference:	True
Well:	PUCKETT 23B-25	Survey Calculation Method:	Minimum Curvature
Wellbore:	OH		
Design:	PLAN #1		

Targets									
Target Name	Dip Angle (°)	Dip Dir. (°)	TVD (usft)	+N/-S (usft)	+E/-W (usft)	Northing (usft)	Easting (usft)	Latitude	Longitude
PUCKETT 23B-25 PBHL - hit/miss target - Shape - plan hits target center - Point	0.00	0.00	9,044.0	-792.0	963.5	14,353,973.80	2,438,313.90	39.493022	-108.171986

Formations						
Measured Depth (usft)	Vertical Depth (usft)	Name	Lithology	Dip (°)	Dip Direction (°)	
6,097.6	5,986.0	OHIO_CREEK				
6,387.5	6,270.0	WILLIAMS_FORK				
7,106.2	6,984.0	TOP_GAS				
8,746.2	8,624.0	CAMEO				
9,016.2	8,894.0	ROLLINS				
9,166.2	9,044.0	TD				

Plan Annotations					
Measured Depth (usft)	Vertical Depth (usft)	+N/-S (usft)	+E/-W (usft)	Comment	
200.0	200.0	0.0	0.0	Start Build 2.00	
777.4	773.5	-36.8	44.8	Start 5651.5 hold at 777.4 MD	
6,428.8	6,310.5	-755.2	918.7	Start Drop -2.00	
7,006.2	6,884.0	-792.0	963.5	Start 2160.0 hold at 7006.2 MD	
9,166.2	9,044.0	-792.0	963.5	TD at 9166.2	