

# Well: Schwake #A-3

## Well Status: Plugged & Abandoned

Status Date: 06/07/2011  
 API #: 05-075-07168  
 Operator: ECGS  
 KB: 4565 ft  
 Ground Level: 4554 ft  
 Location: 1651 FNL 330 FEL  
 SENE Sec 6-T11N-R52W 6 PM  
 Logan County, CO

Completion Date: 01/18/1952  
 PBD: 3492 ft  
 Total Depth: 5344 ft

Surface Casing: 13-5/8" hole with 9-5/8" 25.4# casing set @ 215 ft.  
 cemented to surface with 180 sks.

Production Casing: 5-1/2 15.5# J-55 with baker shoe casing set @ 5339 ft.  
 cemented with 250 sks

Production Perforations: 5308'-5317'

Formation Tops: D Sand  
 J Sand 5380 ft

### Plugged & Abandoned (Date: 10/09/1957)

- Shot casing off at 4089'
- Pulled 146 joints leaving 1252' casing
- Casing from 4089 - 5341'
- Filled hole with heavy mud from 5260 to 200'
- Set rock bridge & 10 sacks cement 160' to 200'
- Spotted heavy mud 20' to 160'
- Set 5 sack cement plug 20' to cellar
- Leveled & abandoned well site

### Recomplete ( Completion Date:12/10/2010)

**Objective:** Schwake A-3 well is to be re-entered & re-plugged to current industry standards to insure no vertical migration of gas occurs during West Peetz gas storage operations.

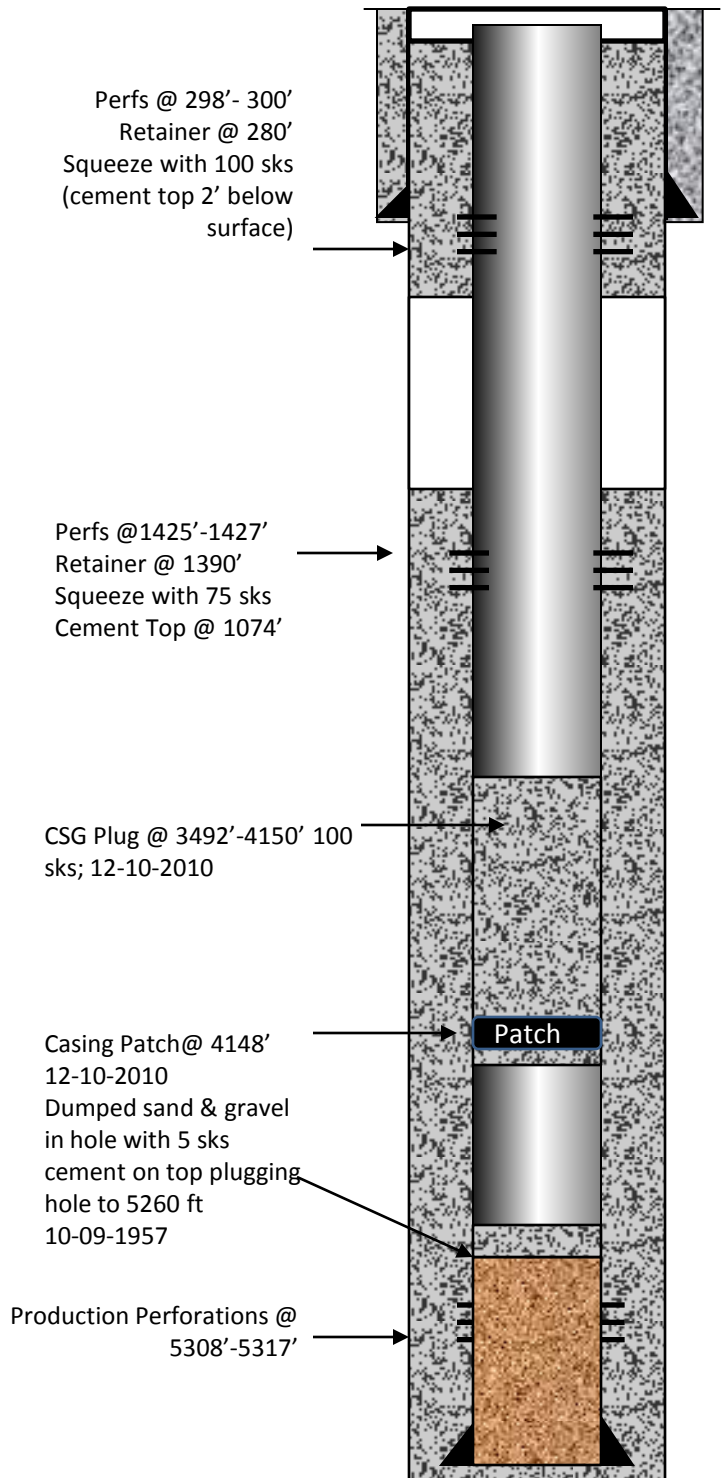
-Run in new Production CSG to cutoff, milled to and set casing patch and set at 4148 ft with 5-1/2" casing to surface squeezed 110 sks of cement

Squeeze Perforation : 298'- 300'  
 cement retainer set at 280 ft  
 squeezed 100 sks  
 \*cement is 2 ft from surface

1425'- 1427'  
 cement retainer set at 1390 ft  
 squeezed 75 sks

Bottom Plug: 3492'-4150' cemented with 100 sks inside casing

CBL: 10/29/2010 (Not in well records)



TD:5344'

PBD: 3492'