



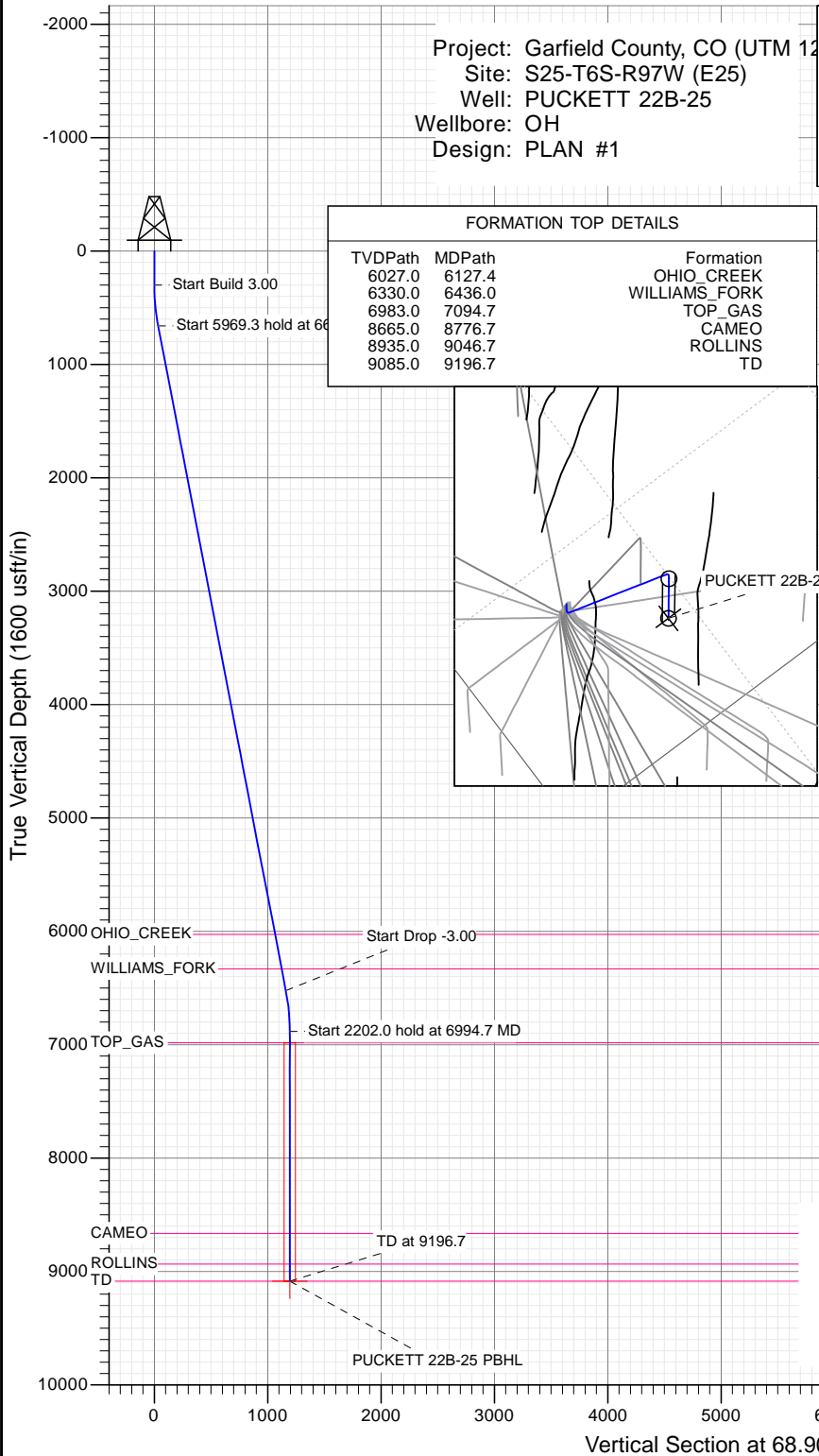
SECTION DETAILS

Sec	MD	Inc	Azi	TVD	+N/-S	+E/-W	Dleg	TFace	Vsect	Target
1	0.0	0.00	0.00	0.0	0.0	0.0	0.00	0.00	0.0	
2	300.0	0.00	0.00	300.0	0.0	0.0	0.00	0.00	0.0	
3	662.7	10.88	68.90	660.5	12.4	32.0	3.00	68.90	34.3	
4	6632.0	10.88	68.90	6522.5	418.0	1083.2	0.00	0.00	1161.1	
5	6994.7	0.00	0.00	6883.0	430.3	1115.2	3.00	180.00	1195.4	
6	9196.7	0.00	0.00	9085.0	430.3	1115.2	0.00	0.00	1195.4	PUCKETT 22B-25 PBHL

Project: Garfield County, CO (UTM 12  
 Site: S25-T6S-R97W (E25)  
 Well: PUCKETT 22B-25  
 Wellbore: OH  
 Design: PLAN #1

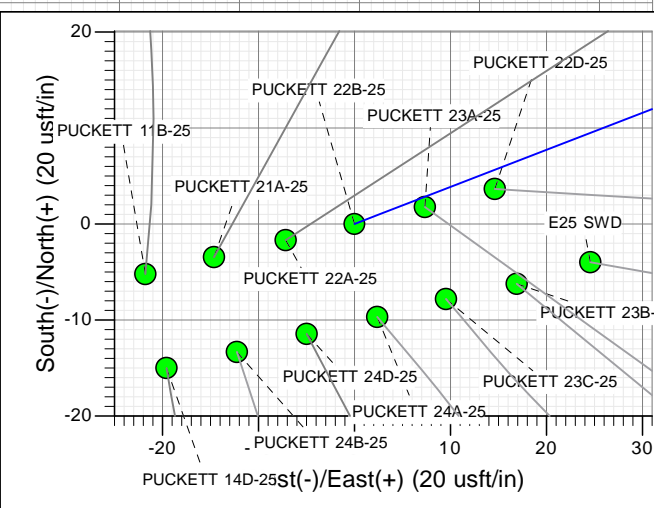
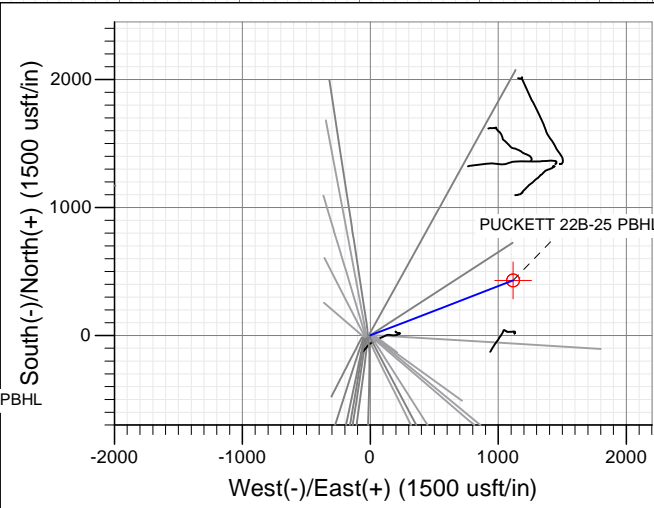
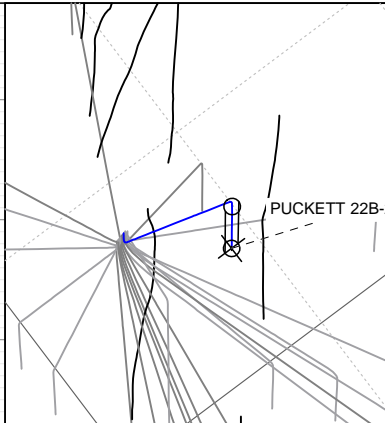
PLAN #1  
 PUCKETT 22B-25  
 15XXX; LR  
 30 KB @ 8406.0usft  
 Ground Level @ 8376.0  
 NAD 1927 - Western US  
 Well PUCKETT 22B-25, True North

Type	Target	Azimuth	Origin	Type	N/S	E/W	From
TD	No Target (Freehand)	68.90	Slot		0.0	0.0	TVD
Name		TVD	+N/-S	+E/W	Latitude	Longitude	
PUCKETT 22B-25 PBHL		9085.0	430.3	1115.2	39.496394	-108.171508	



FORMATION TOP DETAILS

TVDPath	MDPath	Formation
6027.0	6127.4	OHIO_CREEK
6330.0	6436.0	WILLIAMS_FORK
6983.0	7094.7	TOP_GAS
8665.0	8776.7	CAMEO
8935.0	9046.7	ROLLINS
9085.0	9196.7	TD



T M  
 Azimuths to True North  
 Magnetic North: 9.82°  
 Magnetic Field  
 Strength: 51888.5snT  
 Dip Angle: 65.85°  
 Date: 1/7/2016  
 Model: HDGM

CASING DETAILS  
 No casing data is available



WELL DETAILS: PUCKETT 22B-25

+N/-S	+E/-W	Northing	Ground Level:	8376.0	Latitude	Longitude
0.0	0.0	14354740.90	Easting	2437308.90	39.495213	-108.175459



## Planning Report

<b>Database:</b>	USA EDM 5000 Multi Users DB	<b>Local Co-ordinate Reference:</b>	Well PUCKETT 22B-25
<b>Company:</b>	Caerus Oil & Gas	<b>TVD Reference:</b>	30' KB @ 8406.0usft
<b>Project:</b>	Garfield County, CO (UTM 12N)	<b>MD Reference:</b>	30' KB @ 8406.0usft
<b>Site:</b>	S25-T6S-R97W (E25)	<b>North Reference:</b>	True
<b>Well:</b>	PUCKETT 22B-25	<b>Survey Calculation Method:</b>	Minimum Curvature
<b>Wellbore:</b>	OH		
<b>Design:</b>	PLAN #1		

<b>Project</b>	Garfield County, CO (UTM 12N)		
<b>Map System:</b>	Universal Transverse Mercator (US Survey Feet)	<b>System Datum:</b>	Mean Sea Level
<b>Geo Datum:</b>	NAD 1927 - Western US		
<b>Map Zone:</b>	Zone 12N (114 W to 108 W)		

<b>Site</b>	S25-T6S-R97W (E25)				
<b>Site Position:</b>		<b>Northing:</b>	14,354,735.00 usft	<b>Latitude:</b>	39.495199
<b>From:</b>	Map	<b>Easting:</b>	2,437,287.30 usft	<b>Longitude:</b>	-108.175536
<b>Position Uncertainty:</b>	0.0 usft	<b>Slot Radius:</b>	13-3/16"	<b>Grid Convergence:</b>	1.80 °

<b>Well</b>	PUCKETT 22B-25					
<b>Well Position</b>	<b>+N/-S</b>	0.0 usft	<b>Northing:</b>	14,354,740.90 usft	<b>Latitude:</b>	39.495213
	<b>+E/-W</b>	0.0 usft	<b>Easting:</b>	2,437,308.90 usft	<b>Longitude:</b>	-108.175459
<b>Position Uncertainty</b>		0.0 usft	<b>Wellhead Elevation:</b>	0.0 usft	<b>Ground Level:</b>	8,376.0 usft

<b>Wellbore</b>	OH				
<b>Magnetics</b>	<b>Model Name</b>	<b>Sample Date</b>	<b>Declination</b>	<b>Dip Angle</b>	<b>Field Strength</b>
			(°)	(°)	(nT)
	HDGM	1/7/2016	9.82	65.85	51,889

<b>Design</b>	PLAN #1			
<b>Audit Notes:</b>				
<b>Version:</b>	<b>Phase:</b>	PLAN	<b>Tie On Depth:</b>	0.0
<b>Vertical Section:</b>	<b>Depth From (TVD)</b>	<b>+N/-S</b>	<b>+E/-W</b>	<b>Direction</b>
	(usft)	(usft)	(usft)	(°)
	0.0	0.0	0.0	68.90

Plan Sections										
Measured Depth (usft)	Inclination (°)	Azimuth (°)	Vertical Depth (usft)	+N/-S (usft)	+E/-W (usft)	Dogleg Rate (°/100usft)	Build Rate (°/100usft)	Turn Rate (°/100usft)	TFO (°)	Target
0.0	0.00	0.00	0.0	0.0	0.0	0.00	0.00	0.00	0.00	
300.0	0.00	0.00	300.0	0.0	0.0	0.00	0.00	0.00	0.00	
662.7	10.88	68.90	660.5	12.4	32.0	3.00	3.00	0.00	68.90	
6,632.0	10.88	68.90	6,522.5	418.0	1,083.2	0.00	0.00	0.00	0.00	
6,994.7	0.00	0.00	6,883.0	430.3	1,115.2	3.00	-3.00	0.00	180.00	
9,196.7	0.00	0.00	9,085.0	430.3	1,115.2	0.00	0.00	0.00	0.00	PUCKETT 22B-25 PE

## Planning Report

<b>Database:</b>	USA EDM 5000 Multi Users DB	<b>Local Co-ordinate Reference:</b>	Well PUCKETT 22B-25
<b>Company:</b>	Caerus Oil & Gas	<b>TVD Reference:</b>	30' KB @ 8406.0usft
<b>Project:</b>	Garfield County, CO (UTM 12N)	<b>MD Reference:</b>	30' KB @ 8406.0usft
<b>Site:</b>	S25-T6S-R97W (E25)	<b>North Reference:</b>	True
<b>Well:</b>	PUCKETT 22B-25	<b>Survey Calculation Method:</b>	Minimum Curvature
<b>Wellbore:</b>	OH		
<b>Design:</b>	PLAN #1		

Planned Survey									
Measured Depth (usft)	Inclination (°)	Azimuth (°)	Vertical Depth (usft)	+N/-S (usft)	+E/-W (usft)	Vertical Section (usft)	Dogleg Rate (°/100usft)	Build Rate (°/100u)	Comments / Formations
0.0	0.00	0.00	0.0	0.0	0.0	0.0	0.00	0.00	
100.0	0.00	0.00	100.0	0.0	0.0	0.0	0.00	0.00	
200.0	0.00	0.00	200.0	0.0	0.0	0.0	0.00	0.00	
300.0	0.00	0.00	300.0	0.0	0.0	0.0	0.00	0.00	Start Build 3.00
400.0	3.00	68.90	400.0	0.9	2.4	2.6	3.00	3.00	
500.0	6.00	68.90	499.6	3.8	9.8	10.5	3.00	3.00	
600.0	9.00	68.90	598.8	8.5	21.9	23.5	3.00	3.00	
662.7	10.88	68.90	660.5	12.4	32.0	34.3	3.00	3.00	Start 5969.3 hold at 662.7 MD
700.0	10.88	68.90	697.2	14.9	38.6	41.4	0.00	0.00	
800.0	10.88	68.90	795.4	21.7	56.2	60.3	0.00	0.00	
900.0	10.88	68.90	893.6	28.5	73.8	79.1	0.00	0.00	
1,000.0	10.88	68.90	991.8	35.3	91.4	98.0	0.00	0.00	
1,100.0	10.88	68.90	1,090.0	42.1	109.0	116.9	0.00	0.00	
1,200.0	10.88	68.90	1,188.2	48.9	126.7	135.8	0.00	0.00	
1,300.0	10.88	68.90	1,286.4	55.7	144.3	154.6	0.00	0.00	
1,400.0	10.88	68.90	1,384.6	62.5	161.9	173.5	0.00	0.00	
1,500.0	10.88	68.90	1,482.8	69.3	179.5	192.4	0.00	0.00	
1,600.0	10.88	68.90	1,581.0	76.1	197.1	211.3	0.00	0.00	
1,700.0	10.88	68.90	1,679.2	82.8	214.7	230.1	0.00	0.00	
1,800.0	10.88	68.90	1,777.4	89.6	232.3	249.0	0.00	0.00	
1,900.0	10.88	68.90	1,875.6	96.4	249.9	267.9	0.00	0.00	
2,000.0	10.88	68.90	1,973.8	103.2	267.5	286.8	0.00	0.00	
2,100.0	10.88	68.90	2,072.0	110.0	285.1	305.6	0.00	0.00	
2,200.0	10.88	68.90	2,170.2	116.8	302.8	324.5	0.00	0.00	
2,300.0	10.88	68.90	2,268.4	123.6	320.4	343.4	0.00	0.00	
2,400.0	10.88	68.90	2,366.6	130.4	338.0	362.3	0.00	0.00	
2,500.0	10.88	68.90	2,464.8	137.2	355.6	381.1	0.00	0.00	
2,600.0	10.88	68.90	2,563.0	144.0	373.2	400.0	0.00	0.00	
2,700.0	10.88	68.90	2,661.2	150.8	390.8	418.9	0.00	0.00	
2,800.0	10.88	68.90	2,759.4	157.6	408.4	437.8	0.00	0.00	
2,900.0	10.88	68.90	2,857.6	164.4	426.0	456.6	0.00	0.00	
3,000.0	10.88	68.90	2,955.8	171.2	443.6	475.5	0.00	0.00	
3,100.0	10.88	68.90	3,054.0	178.0	461.2	494.4	0.00	0.00	
3,200.0	10.88	68.90	3,152.2	184.8	478.8	513.3	0.00	0.00	
3,300.0	10.88	68.90	3,250.4	191.6	496.5	532.1	0.00	0.00	
3,400.0	10.88	68.90	3,348.6	198.4	514.1	551.0	0.00	0.00	
3,500.0	10.88	68.90	3,446.8	205.2	531.7	569.9	0.00	0.00	
3,600.0	10.88	68.90	3,545.0	211.9	549.3	588.8	0.00	0.00	
3,700.0	10.88	68.90	3,643.2	218.7	566.9	607.6	0.00	0.00	
3,800.0	10.88	68.90	3,741.4	225.5	584.5	626.5	0.00	0.00	
3,900.0	10.88	68.90	3,839.6	232.3	602.1	645.4	0.00	0.00	
4,000.0	10.88	68.90	3,937.8	239.1	619.7	664.3	0.00	0.00	
4,100.0	10.88	68.90	4,036.0	245.9	637.3	683.1	0.00	0.00	
4,200.0	10.88	68.90	4,134.2	252.7	654.9	702.0	0.00	0.00	
4,300.0	10.88	68.90	4,232.4	259.5	672.6	720.9	0.00	0.00	
4,400.0	10.88	68.90	4,330.6	266.3	690.2	739.8	0.00	0.00	
4,500.0	10.88	68.90	4,428.8	273.1	707.8	758.6	0.00	0.00	
4,600.0	10.88	68.90	4,527.0	279.9	725.4	777.5	0.00	0.00	
4,700.0	10.88	68.90	4,625.3	286.7	743.0	796.4	0.00	0.00	
4,800.0	10.88	68.90	4,723.5	293.5	760.6	815.3	0.00	0.00	
4,900.0	10.88	68.90	4,821.7	300.3	778.2	834.1	0.00	0.00	
5,000.0	10.88	68.90	4,919.9	307.1	795.8	853.0	0.00	0.00	

## Planning Report

<b>Database:</b>	USA EDM 5000 Multi Users DB	<b>Local Co-ordinate Reference:</b>	Well PUCKETT 22B-25
<b>Company:</b>	Caerus Oil & Gas	<b>TVD Reference:</b>	30' KB @ 8406.0usft
<b>Project:</b>	Garfield County, CO (UTM 12N)	<b>MD Reference:</b>	30' KB @ 8406.0usft
<b>Site:</b>	S25-T6S-R97W (E25)	<b>North Reference:</b>	True
<b>Well:</b>	PUCKETT 22B-25	<b>Survey Calculation Method:</b>	Minimum Curvature
<b>Wellbore:</b>	OH		
<b>Design:</b>	PLAN #1		

### Planned Survey

Measured Depth (usft)	Inclination (°)	Azimuth (°)	Vertical Depth (usft)	+N/-S (usft)	+E/-W (usft)	Vertical Section (usft)	Dogleg Rate (°/100usft)	Build Rate (°/100u)	Comments / Formations
5,100.0	10.88	68.90	5,018.1	313.9	813.4	871.9	0.00	0.00	
5,200.0	10.88	68.90	5,116.3	320.7	831.0	890.8	0.00	0.00	
5,300.0	10.88	68.90	5,214.5	327.5	848.7	909.6	0.00	0.00	
5,400.0	10.88	68.90	5,312.7	334.3	866.3	928.5	0.00	0.00	
5,500.0	10.88	68.90	5,410.9	341.1	883.9	947.4	0.00	0.00	
5,600.0	10.88	68.90	5,509.1	347.8	901.5	966.3	0.00	0.00	
5,700.0	10.88	68.90	5,607.3	354.6	919.1	985.1	0.00	0.00	
5,800.0	10.88	68.90	5,705.5	361.4	936.7	1,004.0	0.00	0.00	
5,900.0	10.88	68.90	5,803.7	368.2	954.3	1,022.9	0.00	0.00	
6,000.0	10.88	68.90	5,901.9	375.0	971.9	1,041.8	0.00	0.00	
6,100.0	10.88	68.90	6,000.1	381.8	989.5	1,060.6	0.00	0.00	
6,127.4	10.88	68.90	6,027.0	383.7	994.4	1,065.8	0.00	0.00	OHIO_CREEK
6,200.0	10.88	68.90	6,098.3	388.6	1,007.1	1,079.5	0.00	0.00	
6,300.0	10.88	68.90	6,196.5	395.4	1,024.8	1,098.4	0.00	0.00	
6,400.0	10.88	68.90	6,294.7	402.2	1,042.4	1,117.3	0.00	0.00	
6,436.0	10.88	68.90	6,330.0	404.7	1,048.7	1,124.1	0.00	0.00	WILLIAMS_FORK
6,500.0	10.88	68.90	6,392.9	409.0	1,060.0	1,136.1	0.00	0.00	
6,600.0	10.88	68.90	6,491.1	415.8	1,077.6	1,155.0	0.00	0.00	
6,632.0	10.88	68.90	6,522.5	418.0	1,083.2	1,161.1	0.00	0.00	Start Drop -3.00
6,700.0	8.84	68.90	6,589.5	422.2	1,094.1	1,172.7	3.00	-3.00	
6,800.0	5.84	68.90	6,688.7	426.8	1,106.0	1,185.5	3.00	-3.00	
6,900.0	2.84	68.90	6,788.4	429.5	1,113.1	1,193.0	3.00	-3.00	
6,994.7	0.00	0.00	6,883.0	430.3	1,115.2	1,195.4	3.00	-3.00	Start 2202.0 hold at 6994.7 MD
7,000.0	0.00	0.00	6,888.3	430.3	1,115.2	1,195.4	0.00	0.00	
7,094.7	0.00	0.00	6,983.0	430.3	1,115.2	1,195.4	0.00	0.00	TOP_GAS
7,100.0	0.00	0.00	6,988.3	430.3	1,115.2	1,195.4	0.00	0.00	
7,200.0	0.00	0.00	7,088.3	430.3	1,115.2	1,195.4	0.00	0.00	
7,300.0	0.00	0.00	7,188.3	430.3	1,115.2	1,195.4	0.00	0.00	
7,400.0	0.00	0.00	7,288.3	430.3	1,115.2	1,195.4	0.00	0.00	
7,500.0	0.00	0.00	7,388.3	430.3	1,115.2	1,195.4	0.00	0.00	
7,600.0	0.00	0.00	7,488.3	430.3	1,115.2	1,195.4	0.00	0.00	
7,700.0	0.00	0.00	7,588.3	430.3	1,115.2	1,195.4	0.00	0.00	
7,800.0	0.00	0.00	7,688.3	430.3	1,115.2	1,195.4	0.00	0.00	
7,900.0	0.00	0.00	7,788.3	430.3	1,115.2	1,195.4	0.00	0.00	
8,000.0	0.00	0.00	7,888.3	430.3	1,115.2	1,195.4	0.00	0.00	
8,100.0	0.00	0.00	7,988.3	430.3	1,115.2	1,195.4	0.00	0.00	
8,200.0	0.00	0.00	8,088.3	430.3	1,115.2	1,195.4	0.00	0.00	
8,300.0	0.00	0.00	8,188.3	430.3	1,115.2	1,195.4	0.00	0.00	
8,400.0	0.00	0.00	8,288.3	430.3	1,115.2	1,195.4	0.00	0.00	
8,500.0	0.00	0.00	8,388.3	430.3	1,115.2	1,195.4	0.00	0.00	
8,600.0	0.00	0.00	8,488.3	430.3	1,115.2	1,195.4	0.00	0.00	
8,700.0	0.00	0.00	8,588.3	430.3	1,115.2	1,195.4	0.00	0.00	
8,776.7	0.00	0.00	8,665.0	430.3	1,115.2	1,195.4	0.00	0.00	CAMEO
8,800.0	0.00	0.00	8,688.3	430.3	1,115.2	1,195.4	0.00	0.00	
8,900.0	0.00	0.00	8,788.3	430.3	1,115.2	1,195.4	0.00	0.00	
9,000.0	0.00	0.00	8,888.3	430.3	1,115.2	1,195.4	0.00	0.00	
9,046.7	0.00	0.00	8,935.0	430.3	1,115.2	1,195.4	0.00	0.00	ROLLINS
9,100.0	0.00	0.00	8,988.3	430.3	1,115.2	1,195.4	0.00	0.00	
9,196.7	0.00	0.00	9,085.0	430.3	1,115.2	1,195.4	0.00	0.00	TD at 9196.7 - TD

## Planning Report

<b>Database:</b>	USA EDM 5000 Multi Users DB	<b>Local Co-ordinate Reference:</b>	Well PUCKETT 22B-25
<b>Company:</b>	Caerus Oil & Gas	<b>TVD Reference:</b>	30' KB @ 8406.0usft
<b>Project:</b>	Garfield County, CO (UTM 12N)	<b>MD Reference:</b>	30' KB @ 8406.0usft
<b>Site:</b>	S25-T6S-R97W (E25)	<b>North Reference:</b>	True
<b>Well:</b>	PUCKETT 22B-25	<b>Survey Calculation Method:</b>	Minimum Curvature
<b>Wellbore:</b>	OH		
<b>Design:</b>	PLAN #1		

Targets									
Target Name	Dip Angle	Dip Dir.	TVD	+N/-S	+E/-W	Northing	Easting	Latitude	Longitude
- hit/miss target	(°)	(°)	(usft)	(usft)	(usft)	(usft)	(usft)		
- Shape									
PUCKETT 22B-25 PBHL	0.00	0.00	9,085.0	430.3	1,115.2	14,355,206.00	2,438,410.10	39.496394	-108.171508
- plan hits target center - Circle (radius 50.0)									

Formations						
Measured Depth	Vertical Depth	Name	Lithology	Dip	Dip Direction	
(usft)	(usft)			(°)	(°)	
6,127.4	6,027.0	OHIO_CREEK				
6,436.0	6,330.0	WILLIAMS_FORK				
7,094.7	6,983.0	TOP_GAS				
8,776.7	8,665.0	CAMEO				
9,046.7	8,935.0	ROLLINS				
9,196.7	9,085.0	TD				

Plan Annotations					
Measured Depth	Vertical Depth	Local Coordinates		Comment	
(usft)	(usft)	+N/-S	+E/-W		
		(usft)	(usft)		
300.0	300.0	0.0	0.0	Start Build 3.00	
662.7	660.5	12.4	32.0	Start 5969.3 hold at 662.7 MD	
6,632.0	6,522.5	418.0	1,083.2	Start Drop -3.00	
6,994.7	6,883.0	430.3	1,115.2	Start 2202.0 hold at 6994.7 MD	
9,196.7	9,085.0	430.3	1,115.2	TD at 9196.7	