



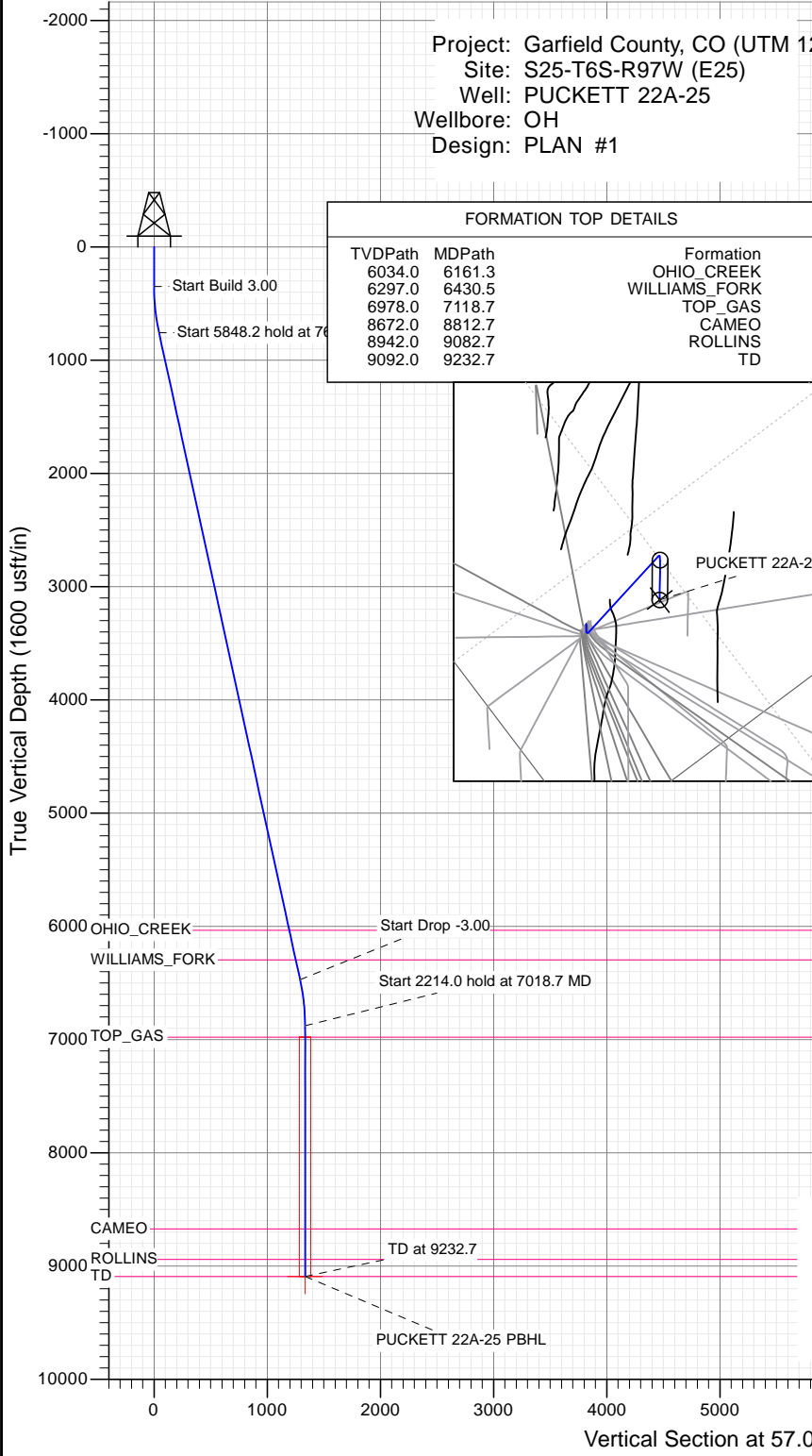
SECTION DETAILS

Sec	MD	Inc	Azi	TVD	+N/-S	+E/-W	Dleg	TFace	Vsect	Target
1	0.0	0.00	0.00	0.0	0.0	0.0	0.00	0.00	0.0	
2	350.0	0.00	0.00	350.0	0.0	0.0	0.00	0.00	0.0	
3	760.3	12.31	57.03	757.1	23.9	36.8	3.00	57.03	43.9	
4	6608.4	12.31	57.03	6470.9	702.4	1082.7	0.00	0.00	1290.6	
5	7018.7	0.00	0.00	6878.0	726.2	1119.5	3.00	180.00	1334.5	
6	9232.7	0.00	0.00	9092.0	726.2	1119.5	0.00	0.00	1334.5	PUCKETT 22A-25 PBHL

Project: Garfield County, CO (UTM 12
 Site: S25-T6S-R97W (E25)
 Well: PUCKETT 22A-25
 Wellbore: OH
 Design: PLAN #1

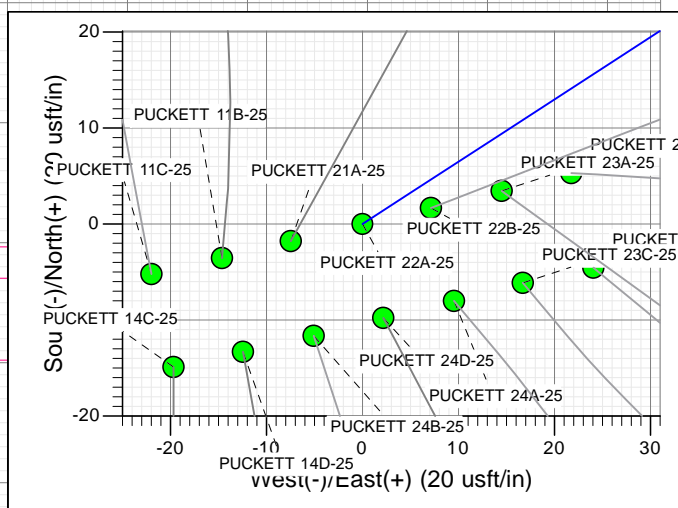
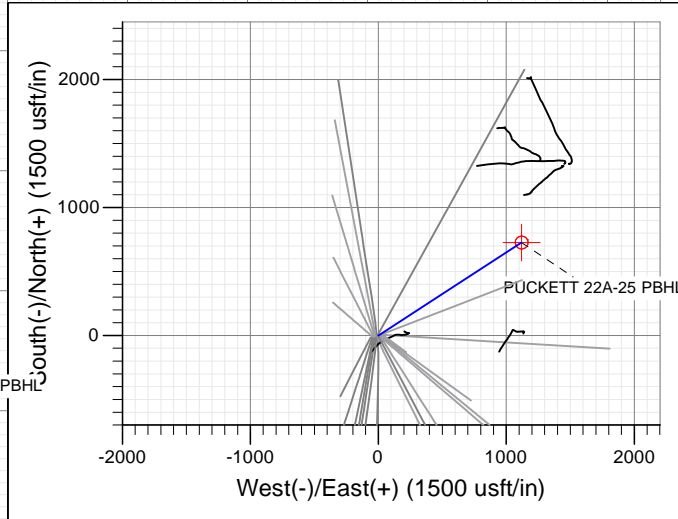
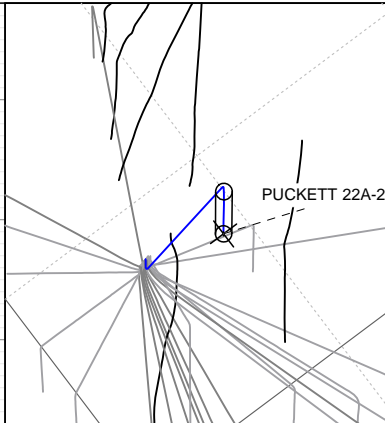
PLAN #1
 PUCKETT 22A-25
 15XXX LR
 30 KB @ 8406.0usft
 Ground Level @ 8376.0
 NAD 1927 - Western US
 Well PUCKETT 22A-25, True North

Type	Target	Azimuth	Origin	N/S	E/W	From
TD	No Target (Freehand)	57.03	Slot	0.0	0.0	TVD
Name		TVD	+N/-S	+E/-W	Latitude	Longitude
PUCKETT 22A-25 PBHL		9092.0	726.2	1119.5	39.497202	-108.171518



FORMATION TOP DETAILS

TVDPATH	MDPATH	FORMATION
6034.0	6161.3	OHIO_CREEK
6297.0	6430.5	WILLIAMS_FORK
6978.0	7118.7	TOP_GAS
8672.0	8812.7	CAMEO
8942.0	9082.7	ROLLINS
9092.0	9232.7	TD



↑ T
 ↓ M
 Azimuths to True North
 Magnetic North: 9.82°
 Magnetic Field
 Strength: 51888.5snT
 Dip Angle: 65.85°
 Date: 1/7/2016
 Model: HDGM

CASING DETAILS
 No casing data is available



WELL DETAILS: PUCKETT 22A-25

		Ground Level: 8376.0			
+N/-S	+E/-W	Northing	Easting	Latitude	Longitude
0.0	0.0	14354739.00	2437301.80	39.495209	-108.175484



Planning Report

Database:	USA EDM 5000 Multi Users DB	Local Co-ordinate Reference:	Well PUCKETT 22A-25
Company:	Caerus Oil & Gas	TVD Reference:	30' KB @ 8406.0usft
Project:	Garfield County, CO (UTM 12N)	MD Reference:	30' KB @ 8406.0usft
Site:	S25-T6S-R97W (E25)	North Reference:	True
Well:	PUCKETT 22A-25	Survey Calculation Method:	Minimum Curvature
Wellbore:	OH		
Design:	PLAN #1		

Project Garfield County, CO (UTM 12N)			
Map System:	Universal Transverse Mercator (US Survey Feet)	System Datum:	Mean Sea Level
Geo Datum:	NAD 1927 - Western US		
Map Zone:	Zone 12N (114 W to 108 W)		

Site S25-T6S-R97W (E25)			
Site Position:		Northing:	14,354,735.00 usft
From:	Map	Easting:	2,437,287.30 usft
Position Uncertainty:	0.0 usft	Slot Radius:	13-3/16"
		Latitude:	39.495199
		Longitude:	-108.175536
		Grid Convergence:	1.80 °

Well PUCKETT 22A-25			
Well Position	+N/-S	0.0 usft	Northing: 14,354,739.00 usft
	+E/-W	0.0 usft	Easting: 2,437,301.80 usft
Position Uncertainty		0.0 usft	Wellhead Elevation: 0.0 usft
			Latitude: 39.495209
			Longitude: -108.175484
			Ground Level: 8,376.0 usft

Wellbore OH					
Magnetics	Model Name	Sample Date	Declination (°)	Dip Angle (°)	Field Strength (nT)
	HDGM	1/7/2016	9.82	65.85	51,889

Design PLAN #1				
Audit Notes:				
Version:	Phase:	PLAN	Tie On Depth:	0.0
Vertical Section:	Depth From (TVD) (usft)	+N/-S (usft)	+E/-W (usft)	Direction (°)
	0.0	0.0	0.0	57.03

Plan Sections										
Measured Depth (usft)	Inclination (°)	Azimuth (°)	Vertical Depth (usft)	+N/-S (usft)	+E/-W (usft)	Dogleg Rate (°/100usft)	Build Rate (°/100usft)	Turn Rate (°/100usft)	TFO (°)	Target
0.0	0.00	0.00	0.0	0.0	0.0	0.00	0.00	0.00	0.00	
350.0	0.00	0.00	350.0	0.0	0.0	0.00	0.00	0.00	0.00	
760.3	12.31	57.03	757.1	23.9	36.8	3.00	3.00	0.00	57.03	
6,608.4	12.31	57.03	6,470.9	702.4	1,082.7	0.00	0.00	0.00	0.00	
7,018.7	0.00	0.00	6,878.0	726.2	1,119.5	3.00	-3.00	0.00	180.00	
9,232.7	0.00	0.00	9,092.0	726.2	1,119.5	0.00	0.00	0.00	0.00	PUCKETT 22A-25 PE

Planning Report

Database:	USA EDM 5000 Multi Users DB	Local Co-ordinate Reference:	Well PUCKETT 22A-25
Company:	Caerus Oil & Gas	TVD Reference:	30' KB @ 8406.0usft
Project:	Garfield County, CO (UTM 12N)	MD Reference:	30' KB @ 8406.0usft
Site:	S25-T6S-R97W (E25)	North Reference:	True
Well:	PUCKETT 22A-25	Survey Calculation Method:	Minimum Curvature
Wellbore:	OH		
Design:	PLAN #1		

Planned Survey									
Measured Depth (usft)	Inclination (°)	Azimuth (°)	Vertical Depth (usft)	+N/-S (usft)	+E/-W (usft)	Vertical Section (usft)	Dogleg Rate (°/100usft)	Build Rate (°/100u)	Comments / Formations
0.0	0.00	0.00	0.0	0.0	0.0	0.0	0.00	0.00	
100.0	0.00	0.00	100.0	0.0	0.0	0.0	0.00	0.00	
200.0	0.00	0.00	200.0	0.0	0.0	0.0	0.00	0.00	
300.0	0.00	0.00	300.0	0.0	0.0	0.0	0.00	0.00	
350.0	0.00	0.00	350.0	0.0	0.0	0.0	0.00	0.00	Start Build 3.00
400.0	1.50	57.03	400.0	0.4	0.5	0.7	3.00	3.00	
500.0	4.50	57.03	499.8	3.2	4.9	5.9	3.00	3.00	
600.0	7.50	57.03	599.3	8.9	13.7	16.3	3.00	3.00	
700.0	10.50	57.03	698.0	17.4	26.8	32.0	3.00	3.00	
760.3	12.31	57.03	757.1	23.9	36.8	43.9	3.00	3.00	Start 5848.2 hold at 760.3 MD
800.0	12.31	57.03	795.9	28.5	43.9	52.4	0.00	0.00	
900.0	12.31	57.03	893.6	40.1	61.8	73.7	0.00	0.00	
1,000.0	12.31	57.03	991.3	51.7	79.7	95.0	0.00	0.00	
1,100.0	12.31	57.03	1,089.0	63.3	97.6	116.3	0.00	0.00	
1,200.0	12.31	57.03	1,186.7	74.9	115.5	137.6	0.00	0.00	
1,300.0	12.31	57.03	1,284.4	86.5	133.4	159.0	0.00	0.00	
1,400.0	12.31	57.03	1,382.1	98.1	151.2	180.3	0.00	0.00	
1,500.0	12.31	57.03	1,479.8	109.7	169.1	201.6	0.00	0.00	
1,600.0	12.31	57.03	1,577.6	121.3	187.0	222.9	0.00	0.00	
1,700.0	12.31	57.03	1,675.3	132.9	204.9	244.2	0.00	0.00	
1,800.0	12.31	57.03	1,773.0	144.5	222.8	265.5	0.00	0.00	
1,900.0	12.31	57.03	1,870.7	156.1	240.7	286.9	0.00	0.00	
2,000.0	12.31	57.03	1,968.4	167.7	258.5	308.2	0.00	0.00	
2,100.0	12.31	57.03	2,066.1	179.3	276.4	329.5	0.00	0.00	
2,200.0	12.31	57.03	2,163.8	190.9	294.3	350.8	0.00	0.00	
2,300.0	12.31	57.03	2,261.5	202.5	312.2	372.1	0.00	0.00	
2,400.0	12.31	57.03	2,359.2	214.1	330.1	393.4	0.00	0.00	
2,500.0	12.31	57.03	2,456.9	225.7	348.0	414.8	0.00	0.00	
2,600.0	12.31	57.03	2,554.6	237.3	365.8	436.1	0.00	0.00	
2,700.0	12.31	57.03	2,652.3	248.9	383.7	457.4	0.00	0.00	
2,800.0	12.31	57.03	2,750.0	260.5	401.6	478.7	0.00	0.00	
2,900.0	12.31	57.03	2,847.7	272.1	419.5	500.0	0.00	0.00	
3,000.0	12.31	57.03	2,945.4	283.7	437.4	521.3	0.00	0.00	
3,100.0	12.31	57.03	3,043.1	295.3	455.3	542.7	0.00	0.00	
3,200.0	12.31	57.03	3,140.8	306.9	473.1	564.0	0.00	0.00	
3,300.0	12.31	57.03	3,238.5	318.5	491.0	585.3	0.00	0.00	
3,400.0	12.31	57.03	3,336.2	330.1	508.9	606.6	0.00	0.00	
3,500.0	12.31	57.03	3,433.9	341.7	526.8	627.9	0.00	0.00	
3,600.0	12.31	57.03	3,531.6	353.3	544.7	649.2	0.00	0.00	
3,700.0	12.31	57.03	3,629.3	364.9	562.6	670.6	0.00	0.00	
3,800.0	12.31	57.03	3,727.0	376.5	580.4	691.9	0.00	0.00	
3,900.0	12.31	57.03	3,824.7	388.1	598.3	713.2	0.00	0.00	
4,000.0	12.31	57.03	3,922.4	399.7	616.2	734.5	0.00	0.00	
4,100.0	12.31	57.03	4,020.1	411.3	634.1	755.8	0.00	0.00	
4,200.0	12.31	57.03	4,117.8	422.9	652.0	777.1	0.00	0.00	
4,300.0	12.31	57.03	4,215.5	434.5	669.9	798.5	0.00	0.00	
4,400.0	12.31	57.03	4,313.2	446.1	687.7	819.8	0.00	0.00	
4,500.0	12.31	57.03	4,410.9	457.7	705.6	841.1	0.00	0.00	
4,600.0	12.31	57.03	4,508.6	469.3	723.5	862.4	0.00	0.00	
4,700.0	12.31	57.03	4,606.3	480.9	741.4	883.7	0.00	0.00	
4,800.0	12.31	57.03	4,704.0	492.5	759.3	905.1	0.00	0.00	
4,900.0	12.31	57.03	4,801.7	504.2	777.2	926.4	0.00	0.00	

Planning Report

Database:	USA EDM 5000 Multi Users DB	Local Co-ordinate Reference:	Well PUCKETT 22A-25
Company:	Caerus Oil & Gas	TVD Reference:	30' KB @ 8406.0usft
Project:	Garfield County, CO (UTM 12N)	MD Reference:	30' KB @ 8406.0usft
Site:	S25-T6S-R97W (E25)	North Reference:	True
Well:	PUCKETT 22A-25	Survey Calculation Method:	Minimum Curvature
Wellbore:	OH		
Design:	PLAN #1		

Planned Survey									
Measured Depth (usft)	Inclination (°)	Azimuth (°)	Vertical Depth (usft)	+N/-S (usft)	+E/-W (usft)	Vertical Section (usft)	Dogleg Rate (°/100usft)	Build Rate (°/100u)	Comments / Formations
5,000.0	12.31	57.03	4,899.4	515.8	795.1	947.7	0.00	0.00	
5,100.0	12.31	57.03	4,997.1	527.4	812.9	969.0	0.00	0.00	
5,200.0	12.31	57.03	5,094.8	539.0	830.8	990.3	0.00	0.00	
5,300.0	12.31	57.03	5,192.5	550.6	848.7	1,011.6	0.00	0.00	
5,400.0	12.31	57.03	5,290.2	562.2	866.6	1,033.0	0.00	0.00	
5,500.0	12.31	57.03	5,387.9	573.8	884.5	1,054.3	0.00	0.00	
5,600.0	12.31	57.03	5,485.6	585.4	902.4	1,075.6	0.00	0.00	
5,700.0	12.31	57.03	5,583.3	597.0	920.2	1,096.9	0.00	0.00	
5,800.0	12.31	57.03	5,681.0	608.6	938.1	1,118.2	0.00	0.00	
5,900.0	12.31	57.03	5,778.7	620.2	956.0	1,139.5	0.00	0.00	
6,000.0	12.31	57.03	5,876.4	631.8	973.9	1,160.9	0.00	0.00	
6,100.0	12.31	57.03	5,974.1	643.4	991.8	1,182.2	0.00	0.00	
6,161.3	12.31	57.03	6,034.0	650.5	1,002.7	1,195.2	0.00	0.00	OHIO_CREEK
6,200.0	12.31	57.03	6,071.8	655.0	1,009.7	1,203.5	0.00	0.00	
6,300.0	12.31	57.03	6,169.5	666.6	1,027.5	1,224.8	0.00	0.00	
6,400.0	12.31	57.03	6,267.2	678.2	1,045.4	1,246.1	0.00	0.00	
6,430.5	12.31	57.03	6,297.0	681.7	1,050.9	1,252.6	0.00	0.00	WILLIAMS_FORK
6,500.0	12.31	57.03	6,364.9	689.8	1,063.3	1,267.4	0.00	0.00	
6,600.0	12.31	57.03	6,462.6	701.4	1,081.2	1,288.8	0.00	0.00	
6,608.4	12.31	57.03	6,470.9	702.4	1,082.7	1,290.6	0.00	0.00	Start Drop -3.00
6,700.0	9.56	57.03	6,560.8	711.8	1,097.3	1,307.9	3.00	-3.00	
6,800.0	6.56	57.03	6,659.8	719.4	1,109.0	1,321.9	3.00	-3.00	
6,900.0	3.56	57.03	6,759.4	724.2	1,116.4	1,330.8	3.00	-3.00	
7,000.0	0.56	57.03	6,859.3	726.2	1,119.5	1,334.4	3.00	-3.00	
7,018.7	0.00	0.00	6,878.0	726.2	1,119.5	1,334.5	3.00	-3.00	Start 2214.0 hold at 7018.7 MD
7,100.0	0.00	0.00	6,959.3	726.2	1,119.5	1,334.5	0.00	0.00	
7,118.7	0.00	0.00	6,978.0	726.2	1,119.5	1,334.5	0.00	0.00	TOP_GAS
7,200.0	0.00	0.00	7,059.3	726.2	1,119.5	1,334.5	0.00	0.00	
7,300.0	0.00	0.00	7,159.3	726.2	1,119.5	1,334.5	0.00	0.00	
7,400.0	0.00	0.00	7,259.3	726.2	1,119.5	1,334.5	0.00	0.00	
7,500.0	0.00	0.00	7,359.3	726.2	1,119.5	1,334.5	0.00	0.00	
7,600.0	0.00	0.00	7,459.3	726.2	1,119.5	1,334.5	0.00	0.00	
7,700.0	0.00	0.00	7,559.3	726.2	1,119.5	1,334.5	0.00	0.00	
7,800.0	0.00	0.00	7,659.3	726.2	1,119.5	1,334.5	0.00	0.00	
7,900.0	0.00	0.00	7,759.3	726.2	1,119.5	1,334.5	0.00	0.00	
8,000.0	0.00	0.00	7,859.3	726.2	1,119.5	1,334.5	0.00	0.00	
8,100.0	0.00	0.00	7,959.3	726.2	1,119.5	1,334.5	0.00	0.00	
8,200.0	0.00	0.00	8,059.3	726.2	1,119.5	1,334.5	0.00	0.00	
8,300.0	0.00	0.00	8,159.3	726.2	1,119.5	1,334.5	0.00	0.00	
8,400.0	0.00	0.00	8,259.3	726.2	1,119.5	1,334.5	0.00	0.00	
8,500.0	0.00	0.00	8,359.3	726.2	1,119.5	1,334.5	0.00	0.00	
8,600.0	0.00	0.00	8,459.3	726.2	1,119.5	1,334.5	0.00	0.00	
8,700.0	0.00	0.00	8,559.3	726.2	1,119.5	1,334.5	0.00	0.00	
8,800.0	0.00	0.00	8,659.3	726.2	1,119.5	1,334.5	0.00	0.00	
8,812.7	0.00	0.00	8,672.0	726.2	1,119.5	1,334.5	0.00	0.00	CAMEO
8,900.0	0.00	0.00	8,759.3	726.2	1,119.5	1,334.5	0.00	0.00	
9,000.0	0.00	0.00	8,859.3	726.2	1,119.5	1,334.5	0.00	0.00	
9,082.7	0.00	0.00	8,942.0	726.2	1,119.5	1,334.5	0.00	0.00	ROLLINS
9,100.0	0.00	0.00	8,959.3	726.2	1,119.5	1,334.5	0.00	0.00	
9,200.0	0.00	0.00	9,059.3	726.2	1,119.5	1,334.5	0.00	0.00	
9,232.7	0.00	0.00	9,092.0	726.2	1,119.5	1,334.5	0.00	0.00	TD at 9232.7 - TD

Planning Report

Database:	USA EDM 5000 Multi Users DB	Local Co-ordinate Reference:	Well PUCKETT 22A-25
Company:	Caerus Oil & Gas	TVD Reference:	30' KB @ 8406.0usft
Project:	Garfield County, CO (UTM 12N)	MD Reference:	30' KB @ 8406.0usft
Site:	S25-T6S-R97W (E25)	North Reference:	True
Well:	PUCKETT 22A-25	Survey Calculation Method:	Minimum Curvature
Wellbore:	OH		
Design:	PLAN #1		

Targets									
Target Name	Dip Angle	Dip Dir.	TVD	+N/-S	+E/-W	Northing	Easting	Latitude	Longitude
- hit/miss target	(°)	(°)	(usft)	(usft)	(usft)	(usft)	(usft)		
- Shape									
PUCKETT 22A-25 PBHL - plan hits target center - Circle (radius 50.0)	0.00	0.00	9,092.0	726.2	1,119.5	14,355,500.00	2,438,398.00	39.497202	-108.171518

Formations						
Measured Depth	Vertical Depth	Name	Lithology	Dip	Dip Direction	
(usft)	(usft)			(°)	(°)	
6,161.3	6,034.0	OHIO_CREEK				
6,430.5	6,297.0	WILLIAMS_FORK				
7,118.7	6,978.0	TOP_GAS				
8,812.7	8,672.0	CAMEO				
9,082.7	8,942.0	ROLLINS				
9,232.7	9,092.0	TD				

Plan Annotations					
Measured Depth	Vertical Depth	Local Coordinates		Comment	
(usft)	(usft)	+N/-S	+E/-W		
		(usft)	(usft)		
350.0	350.0	0.0	0.0	Start Build 3.00	
760.3	757.1	23.9	36.8	Start 5848.2 hold at 760.3 MD	
6,608.4	6,470.9	702.4	1,082.7	Start Drop -3.00	
7,018.7	6,878.0	726.2	1,119.5	Start 2214.0 hold at 7018.7 MD	
9,232.7	9,092.0	726.2	1,119.5	TD at 9232.7	