

LEGEND:

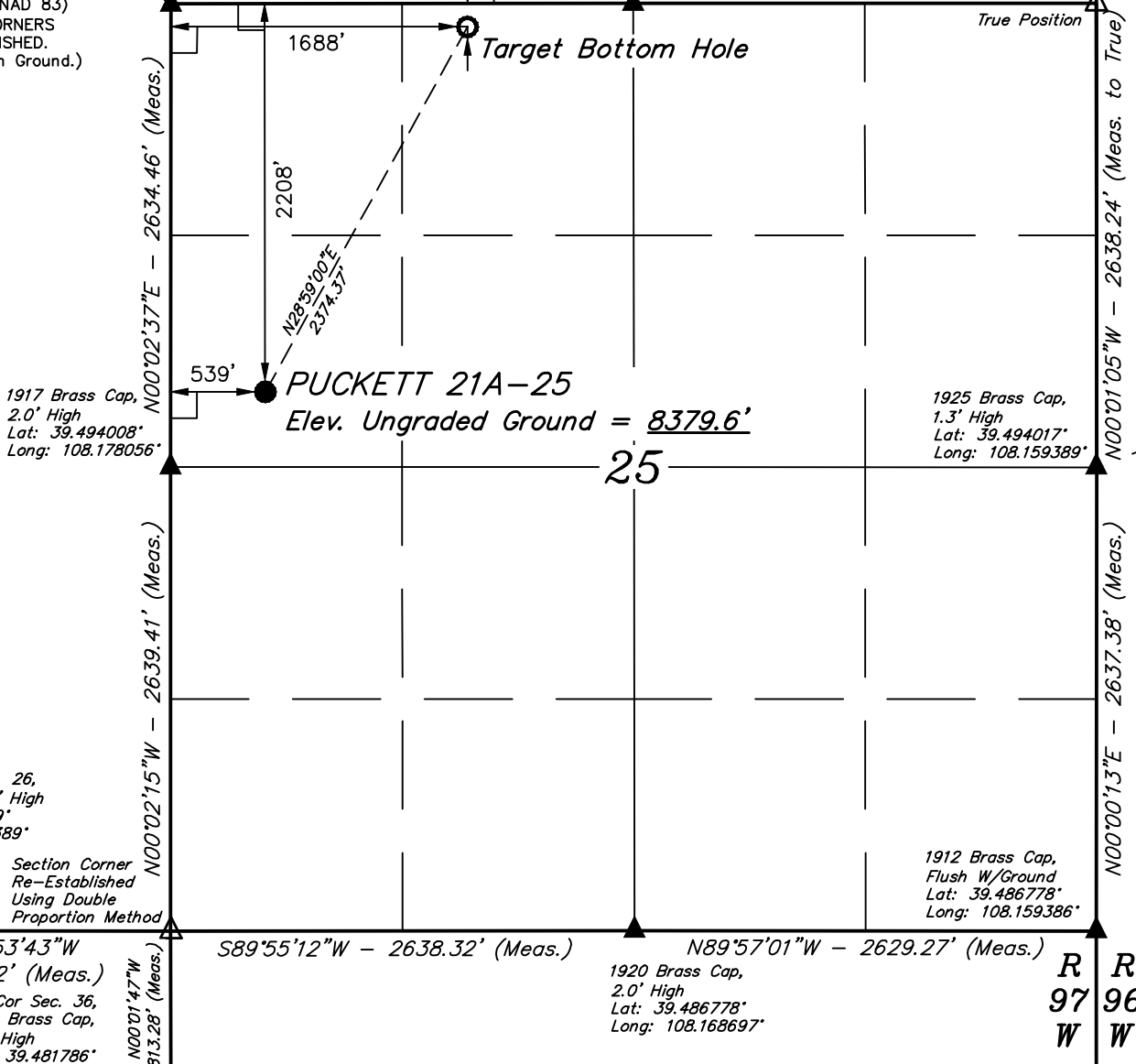
- └─┘ = 90° SYMBOL
- = PROPOSED WELLHEAD.
- = TARGET BOTTOM HOLE.
- ▲ = SECTION CORNERS LOCATED. (NAD 83)
- △ = SECTION CORNERS RE-ESTABLISHED. (Not Set on Ground.) (NAD 83)

T6S, R97W, 6th P.M.

W.C. 1912 Brass Cap, 1.5' High
 Lat: 39.503325°
 Long: 108.159400°

1917 Brass Cap, 0.6' High, Steel Post
 Lat: 39.501239°
 Long: 108.178056°

1917 Brass Cap, 1.5' High
 Lat: 39.501256°
 Long: 108.168731°



S 1/4 Cor Sec. 26, Brass Cap, 1.3' High
 Lat: 39.486769°
 Long: 108.187389°

Section Corner Re-Established Using Double Proportion Method

N89°53'43\"W
 2638.32' (Meas.)

SW Cor Sec. 36, 1920 Brass Cap, 0.9' High
 Lat: 39.481786°
 Long: 108.178033°

N00°01'47\"W
 1813.28' (Meas.)

S89°55'12\"W - 2638.32' (Meas.)

1920 Brass Cap, 2.0' High
 Lat: 39.486778°
 Long: 108.168697°

N89°57'01\"W - 2629.27' (Meas.)

R 97 W
 R 96 W

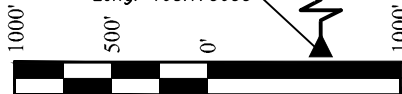
1912 Brass Cap, Flush W/Ground
 Lat: 39.486778°
 Long: 108.159386°

N00°00'13\"E - 2637.38' (Meas.)

N00°01'05\"W - 2638.24' (Meas. to True)

753.72' (G.L.O.)

N00°01'05\"W - 3391.96' (Meas. to W.C.)



PDOP = 1.2

NAD 83 (TARGET BOTTOM HOLE)	NAD 83 (SURFACE LOCATION)
LATITUDE = 39°30'03.18\" (39.500883)	LATITUDE = 39°29'42.65\" (39.495181)
LONGITUDE = 108°10'19.47\" (108.172075)	LONGITUDE = 108°10'34.13\" (108.176147)
NAD 27 (TARGET BOTTOM HOLE)	NAD 27 (SURFACE LOCATION)
LATITUDE = 39°30'03.26\" (39.500906)	LATITUDE = 39°29'42.73\" (39.495203)
LONGITUDE = 108°10'17.18\" (108.171439)	LONGITUDE = 108°10'31.84\" (108.175511)
UTM NAD 27 ZONE 12	UTM NAD 27 ZONE 12
N: 14356850.00 E: 2438377.70	N: 14354737.03 E: 2437294.45

CERTIFICATE OF ACCURACY

THIS IS TO CERTIFY THAT THE ABOVE PLAT WAS PREPARED FROM FIELD NOTES OF ACTUAL SURVEYS MADE BY ME OR UNDER MY SUPERVISION AND THAT THE SAME ARE TRUE AND CORRECT TO THE BEST OF MY KNOWLEDGE AND BELIEF.

Handwritten signature: Harold Massey

REGISTERED LAND SURVEYOR
 REGISTRATION NO. 18180
 STATE OF COLORADO 01-28-16

BASIS OF BEARINGS
 BASIS OF BEARINGS IS A G.P.S. OBSERVATION

BASIS OF ELEVATION

SPOT ELEVATION AT THE NORTHWEST CORNER OF SECTION 30, T5S, R95W, 6th P.M. TAKEN FROM THE FORKED GULCH QUADRANGLE, COLORADO, GARFIELD COUNTY, 7.5 MINUTE SERIES (TOPOGRAPHICAL MAP) PUBLISHED BY THE UNITED STATES DEPARTMENT OF THE INTERIOR, GEOLOGICAL SURVEY. SAID ELEVATION IS MARKED AS BEING 5966 FEET.

Caerus Oil & Gas LLC

PUCKETT 21A-25
 SW 1/4 NW 1/4, SECTION 25, T6S, R97W, 6th P.M.
 GARFIELD COUNTY, COLORADO

SURVEYED BY	DATE	REVISED BY	DATE
BRADEN BOX, B.B.	12-14-15		
DRAWN BY	DATE		
C.D.L.	01-04-16		

WELL LOCATION PLAT



UELS, LLC
 Corporate Office * 85 South 200 East
 Vernal, UT 84078 * (435) 789-1017

